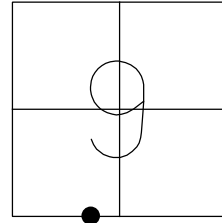


O.D.O.T. DISTRICT 2 SURVEY OFFICE (USE ONLY)

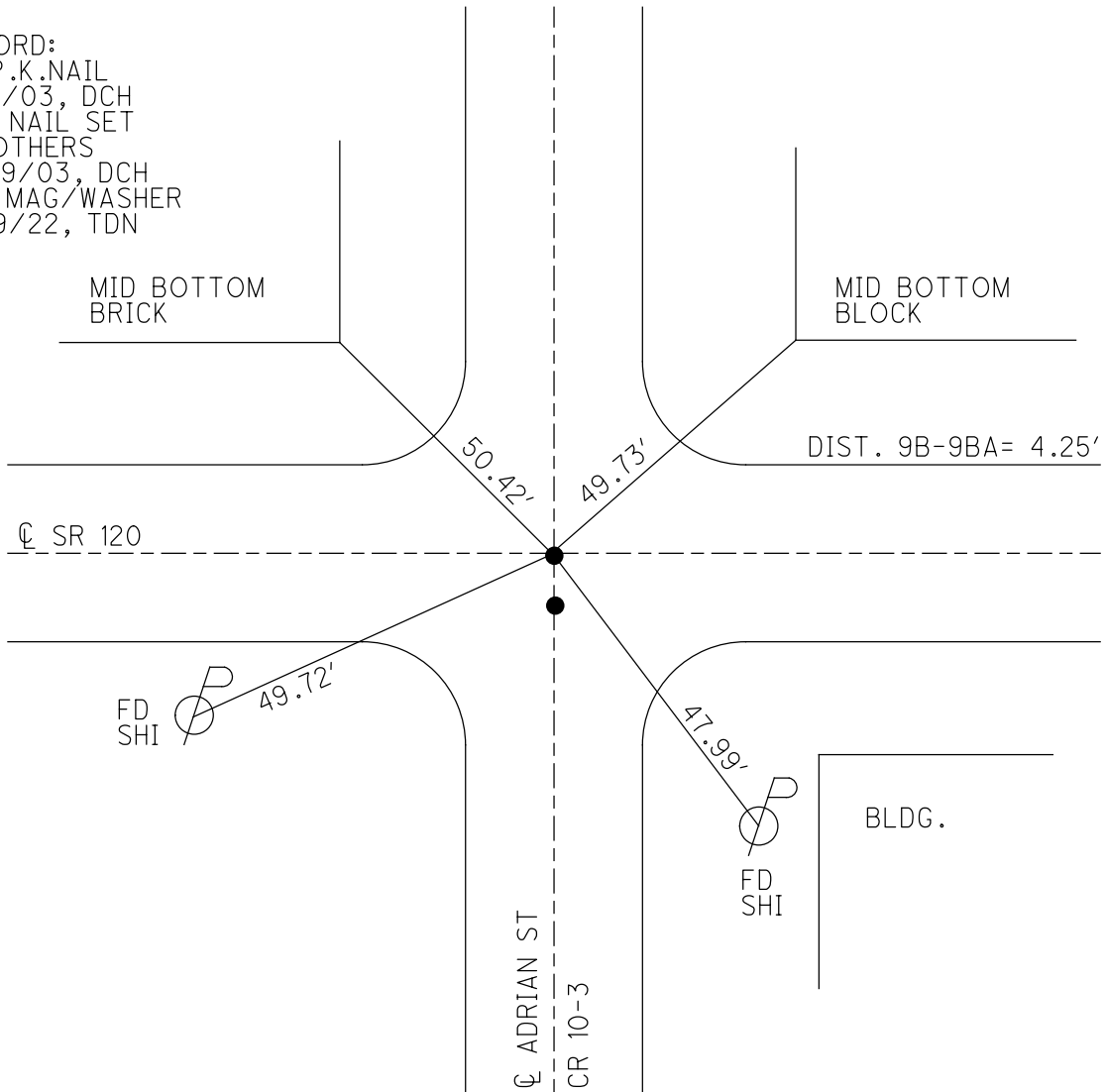
PERSONNEL _____ REFERENCE NO. 9 B SHEET 22 OF 50
 NOTES MILLER DATE 8/29/22 ROUTE SR 120
 H.C. NIESE WEATHER SUNNY COUNTY FULTON
 R.C. AUBLE TEMP. 82° TOWNSHIP ROYALTON
 DWG BY RHOADES PID 99582 SECTION 9
 T 9 N R 3 E

TYPE MONUMENT MAG/WASHER
 ON SURFACE - ~~BELOW~~ ON
 OFFSET ☉ PAVEMENT ON LT : ~~RT~~
- TO - EDGE PAVEMENT
 STATION: 293+72

HORZ. DATUM: NAD83 2011 GEOID: NAVD88 2018
 GRID: NORTHING: 744442.365 EASTING: 1539550.277



RECORD:
 FD P.K.NAIL
 8/15/03, DCH
 MAG NAIL SET
 BY OTHERS
 12/29/03, DCH
 SET MAG/WASHER
 7/29/22, TDN



O.D.O.T. DISTRICT 2 SURVEY OFFICE

PERSONNEL _____

REFERENCE NO. 9 B

SHEET 20 OF 45

NOTES HOMAN

DATE 8/15/03

ROUTE SR 120

H.C. HOMAN

WEATHER CLOUDY

COUNTY FULTON

R.C. MEYERS

TEMP. 80°

TOWNSHIP ROYALTON

SECTION 9

T 9 N R 3 E

TYPE MONUMENT P.K. NAIL

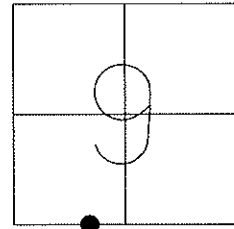
ON SURFACE - ~~BELOW~~ ON _____

LEFT - Q PAV'T - ~~RIGHT~~ 1.0'

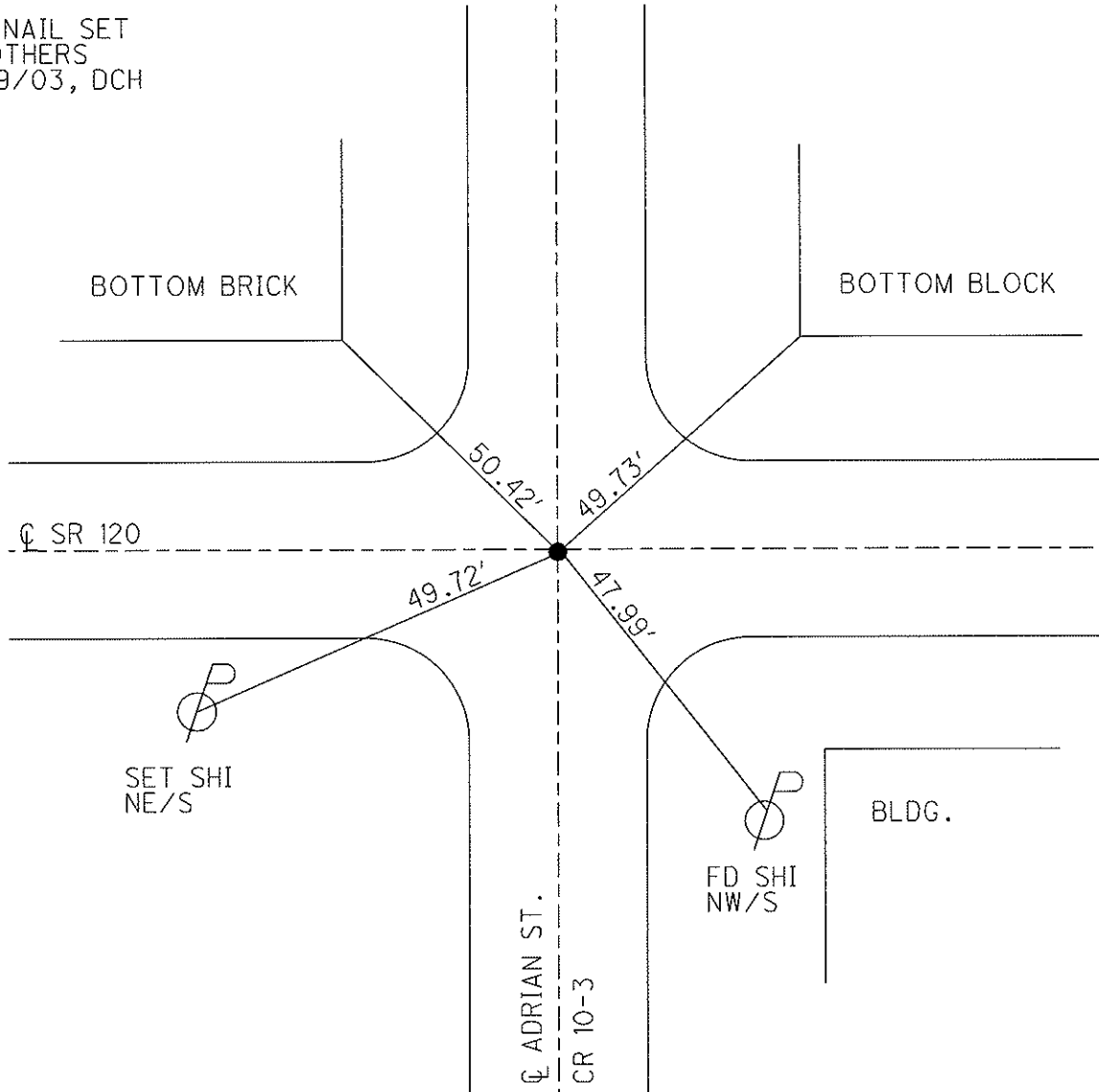
_____ TO _____ EDGE PAVEMENT

S.L.M. 293+72

Grid: Northing: _____ Easting: _____



MAG NAIL SET
BY OTHERS
12/29/03, DCH



O.D.O.T. DISTRICT 2 SURVEY OFFICE

PERSONNEL

REFERENCE NO. 9B

SHEET 5 OF 9

NOTES HOMAN

DATE 8-15-03

ROUTE S.R. 120

H.C. HOMAN

WEATHER CLOUDY

COUNTY FULTON

R.C. MEYERS

TEMP. 80°

TOWNSHIP ROYALTON

SECTION 9

T 9 S R 3 E

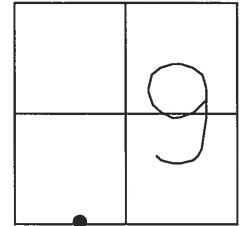
TYPE MONUMENT PK NAIL

ON SURFACE ~~BELOW~~ ON

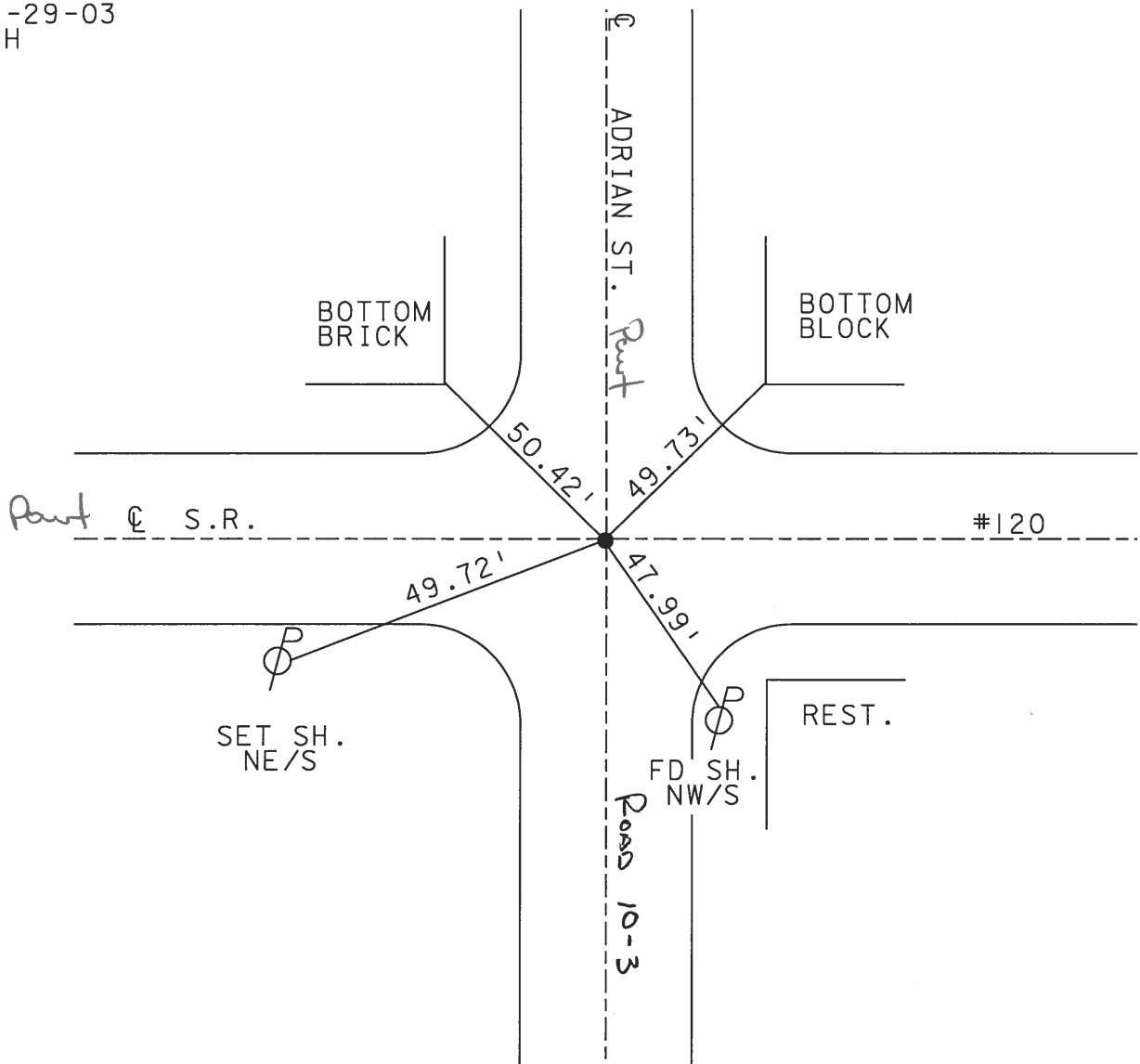
LEFT ~~PAVT~~ ~~RIGHT~~ 1.0

TO EDGE PAVEMENT

S.L.M. 293+72



MAG NAIL
SET BY OTHERS
12-29-03
DCH



O.D.O.T. DISTRICT 2 SURVEY OFFICE

PERSONNEL _____

REFERENCE NO. 9B

SHEET 15 OF _____

NOTES 1. Stone

H.C. D. Curtis

R.C. J. Houxhalder

DATE 14 June 90

WEATHER Warm

TEMP. 75°

ROUTE SR#120

COUNTY Fulton

TOWNSHIP Royalton

SECTION 9

T. _____ R. _____

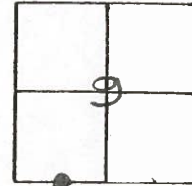
TYPE MONUMENT PK Nail

ON SURFACE - BELOW Surface

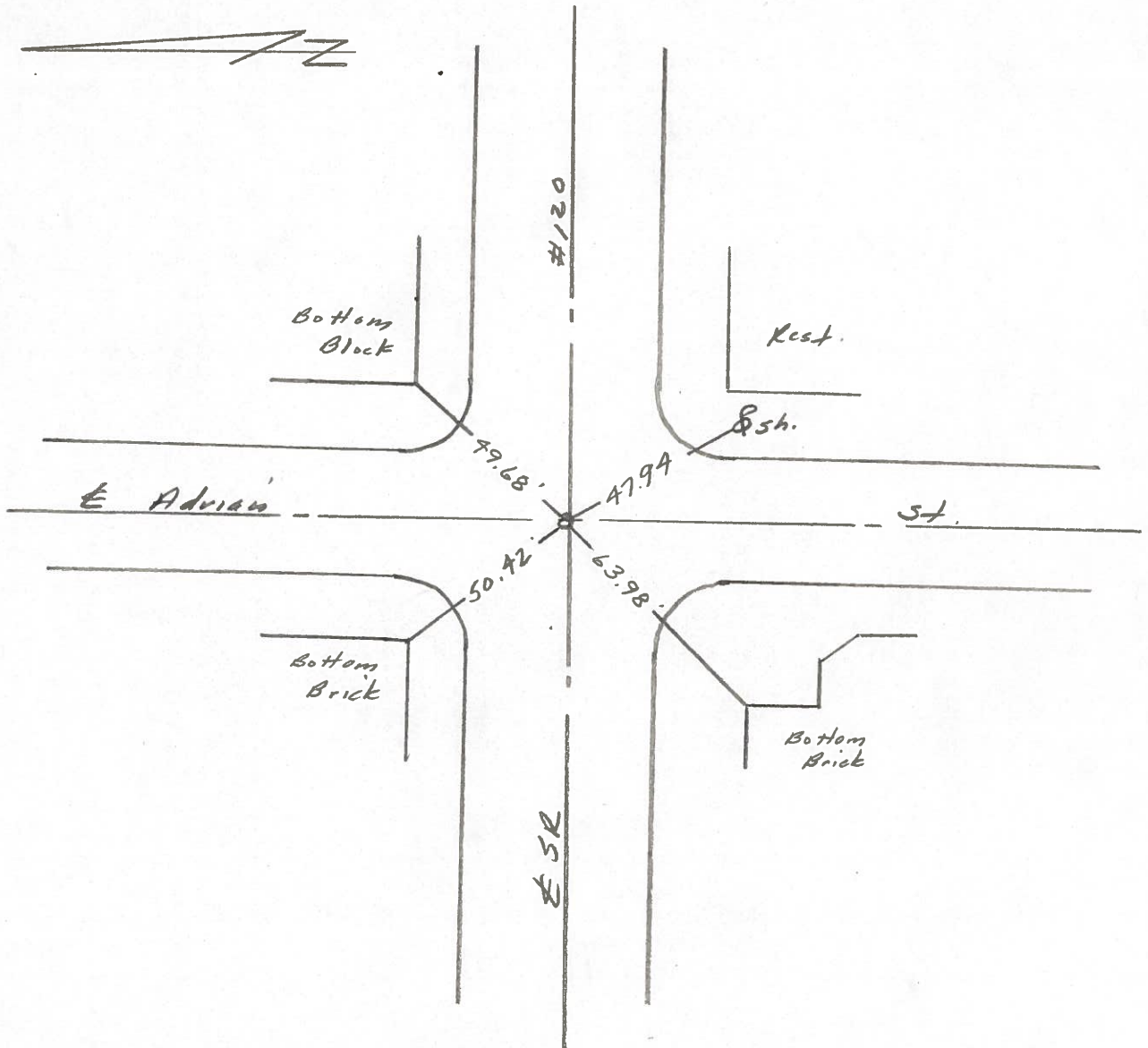
LEFT - & PAV'T. - RIGHT _____

_____ TO _____ EDGE PAVEMENT

S.L.M. 293472



Set PK Nail 8-8-90 IRS



County Fulton S.R. 120

Township Royalton

Section 9-16

T N, R E

Personnel D. Curtis

P. Neuser

R. Michalak

Date 19 Sept 84

Weather Mild

Temp. 75°

#9B

