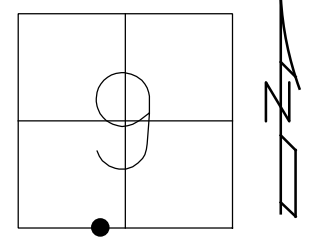


O.D.O.T. DISTRICT 2 SURVEY OFFICE (USE ONLY)

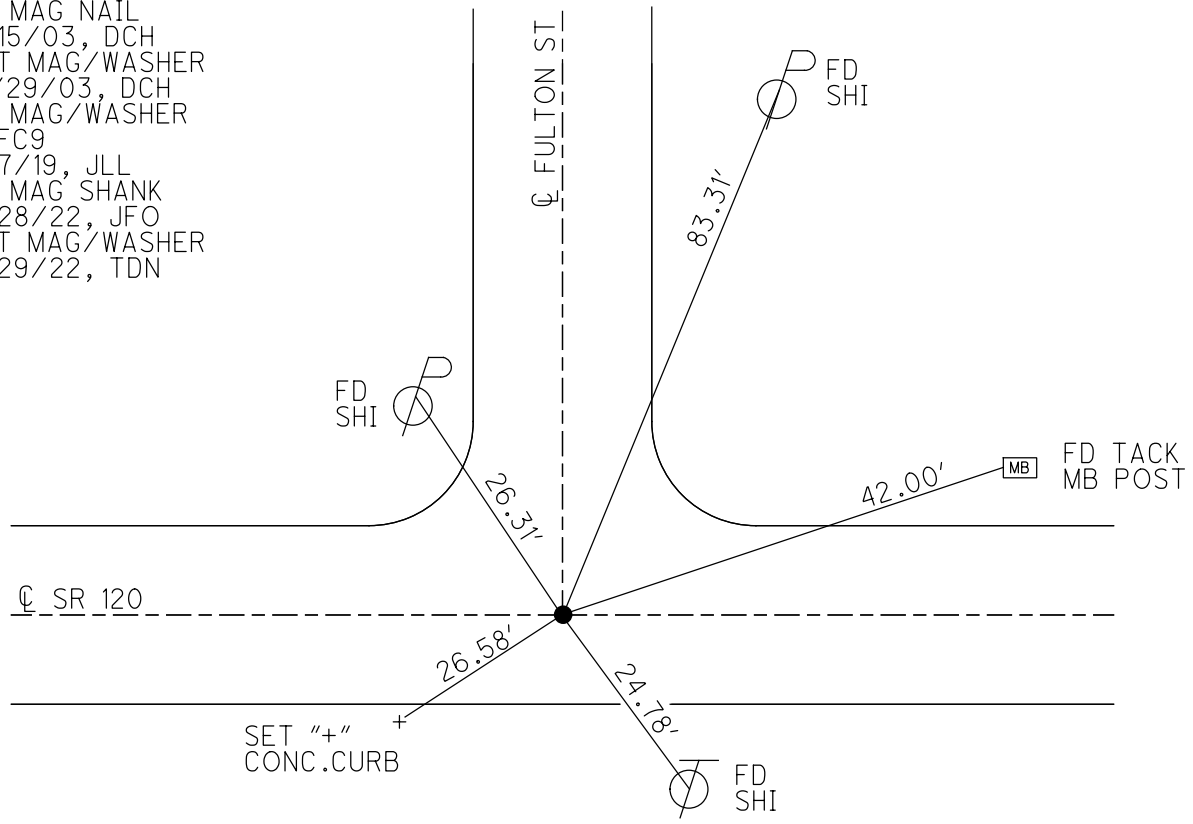
PERSONNEL _____ REFERENCE NO. 9 C SHEET 24 OF 50
 NOTES RHOADES DATE 4/28/22 ROUTE SR 120
 H.C. O'DONNELL WEATHER SUNNY COUNTY FULTON
 R.C. RHOADES TEMP. 40° TOWNSHIP ROYALTON
 SECTION 9
 DWG BY RHOADES PID 99582 T 9 N R 3 E

TYPE MONUMENT MAG SHANK
 ON SURFACE - ~~BELOW~~ ON
 OFFSET ☉ PAVEMENT ON LT : RT
- TO - EDGE PAVEMENT
 STATION: 298+96



HORZ. DATUM: NAD83 2011 GEOID: NAVD88 2018
 GRID: NORTHING: 744443.341 EASTING: 1540068.766

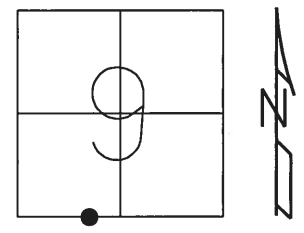
RECORD:
 FD MAG NAIL
 8/15/03, DCH
 SET MAG/WASHER
 12/29/03, DCH
 FD MAG/WASHER
 REFC9
 5/7/19, JLL
 FD MAG SHANK
 4/28/22, JFO
 SET MAG/WASHER
 7/29/22, TDN



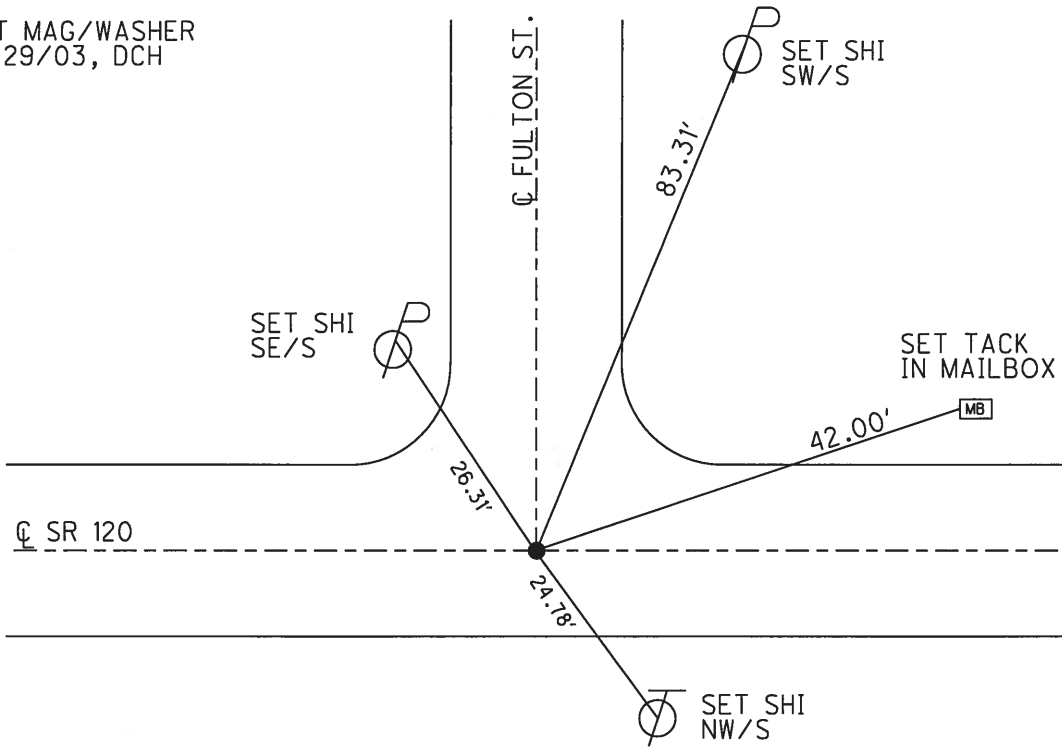
O.D.O.T. DISTRICT 2 SURVEY OFFICE (USE ONLY)

PERSONNEL _____ REFERENCE NO. 9 C SHEET 21 OF 45
 NOTES HOMAN DATE 8/15/03 ROUTE SR 120
 H.C. HOMAN WEATHER CLOUDY COUNTY FULTON
 R.C. MEYERS TEMP. 80° TOWNSHIP ROYALTON
 _____ SECTION 9
 _____ T 9 N R 3 E

TYPE MONUMENT MAG NAIL
 ON SURFACE - ~~BELOW~~ ON _____
 LEFT - ☉ PAV'T - RIGHT ON _____
 _____ TO _____ EDGE PAVEMENT
 S.L.M. 298+96
 GRID: NORTHING: _____ EASTING: _____



SET MAG/WASHER
 12/29/03, DCH



O.D.O.T. DISTRICT 2 SURVEY OFFICE

PERSONNEL

REFERENCE NO. 9c

SHEET 6 OF 9

NOTES HOMAN

DATE 8-15-03

ROUTE S.R. 120

H.C. HOMAN

WEATHER CLOUDY

COUNTY FULTON

R.C. MEYERS

TEMP. 80°

TOWNSHIP ROYALTON

SECTION _____

T 9 S R 3 E

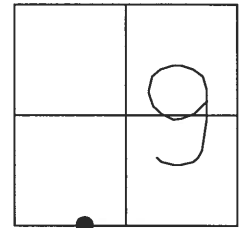
TYPE MONUMENT _____ MAG NAIL _____

ON SURFACE - ~~BELOW~~ _____ ON _____

~~LEFT~~ - Q PAV'T - ~~RIGHT~~ _____ ON _____

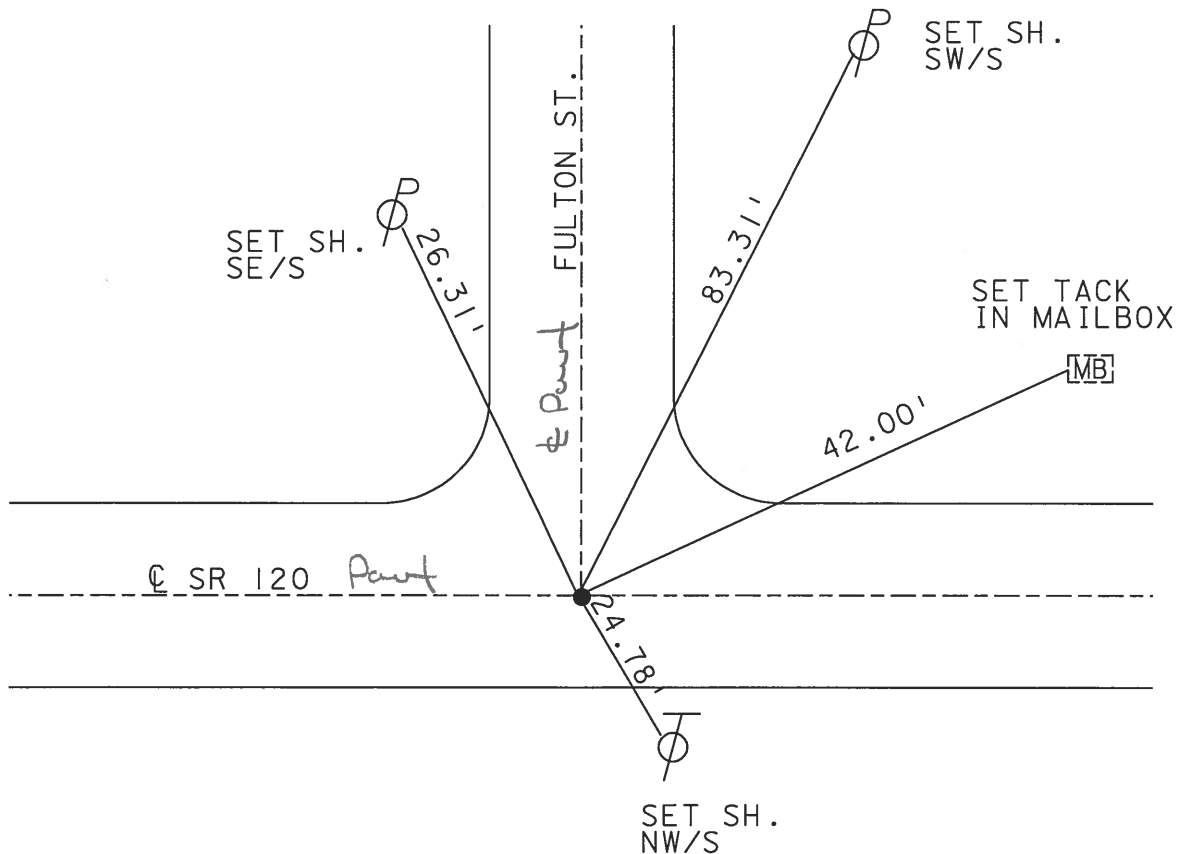
_____ TO _____ EDGE PAVEMENT

S.L.M. _____ 298+96 _____

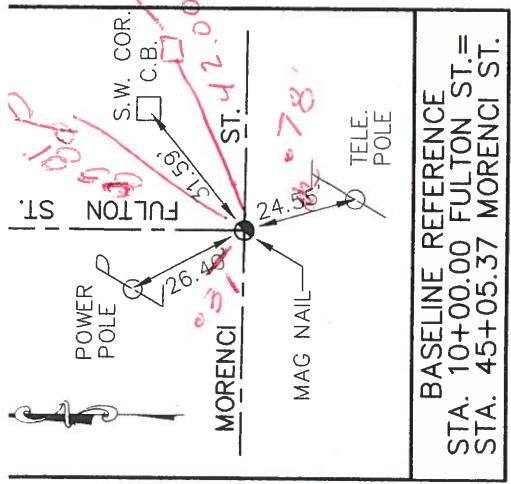


SET MAG & WASHER
12-29-03
DCH

NOTE: POINT Re-set per sewer project plans.

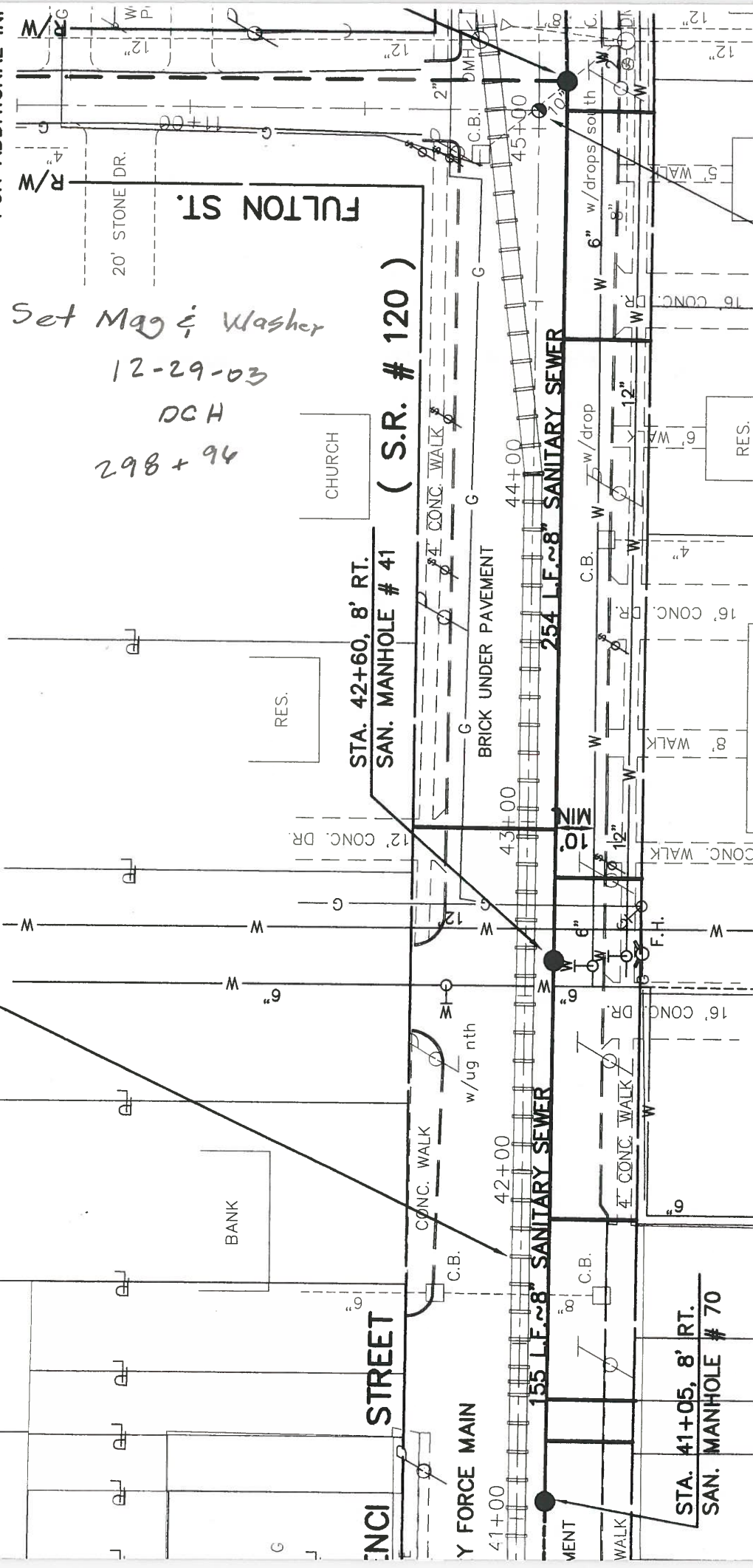


(9C)



APPROXIMATE LOCATION OF ABANDONED RAILWAY (SEE SPECIFICATIONS)

SEE SHEET NO. 24 FOR ADDITIONAL INFO



Set Mag & Washer
12-29-03
DCH
298 + 94

Track in main road

STA. 41+05, 8' RT. SAN. MANHOLE # 70

STA. 42+60, 8' RT. SAN. MANHOLE # 41 (S.R. # 120)

155 L.F. ~ 8" SANITARY SEWER

254 L.F. ~ 8" SANITARY SEWER

MORENCI STREET

FULTON ST.

20' STONE DR.

WATER FORCE MAIN

41+00

42+00

43+00

44+00

45+00

RES.

RES.

CHURCH

CONC. WALK

w/ug nth

BRICK UNDER PAVEMENT

CONC. WALK

CONC. WALK

16' CONC. WALK

16' CONC. WALK

16' CONC. WALK

16' CONC. WALK

DR.

DR.

DR.

DR.

DR.

DR.

6"

6"

6"

6"

6"

6"

6"

6"

6"

6"

6"

6"

6"

6"

6"

6"

6"

6"

6"

6"

6"

6"

6"

6"

6"

6"

6"

6"

6"

6"

6"

6"

6"

6"

6"

6"

6"

6"

6"

6"

6"

6"

6"

6"

6"

6"

6"

6"

6"

6"

6"

6"

6"

6"

6"

6"

6"

6"

6"

6"

6"

6"

6"

6"

6"

6"

6"

6"

6"

6"

6"

6"

6"

6"

6"

6"

6"

6"

6"

6"

6"

6"

6"

6"

6"

6"

6"

6"

6"

6"

6"

6"

6"

6"

6"

6"

6"

6"

6"

6"

6"

6"

6"

6"

6"

6"

6"

6"

6"

6"

6"

6"

6"

6"

6"

6"

6"

6"

6"

6"

6"

6"

6"

6"

6"

6"

6"

6"

6"

6"

6"

6"

6"

6"

6"

6"

6"

6"

6"

6"

6"

6"

6"

6"

6"

6"

6"

6"

6"

6"

6"

6"

6"

6"

6"

6"

6"

6"

6"

6"

6"

6"

6"

6"

6"

6"

6"

6"

6"

6"

6"

6"

6"

6"

6"

6"

6"

6"

6"

6"

6"

6"

6"

6"

6"

6"

6"

6"

6"

6"

6"

6"

6"

6"

6"

6"

6"

6"

6"

6"

6"

6"

6"

6"

6"

6"

6"

6"

6"

6"

6"

6"

6"

6"

6"

6"

6"

6"

6"

6"

6"

6"

6"

6"

6"

6"

6"

6"

6"

6"

6"

6"

6"

6"

6"

6"

6"

6"

6"

6"

6"

6"

6"

6"

6"

6"

6"

6"

6"

6"

6"

6"

6"

6"

6"

6"

6"

6"

6"

6"

6"

6"

6"

6"

6"

6"

6"

6"

6"

6"

6"

6"

6"

6"

6"

6"

6"

6"

6"

6"

6"

6"

6"

6"

6"

6"

6"

6"

6"

6"

6"

6"

6"

6"

6"

6"

6"

6"

6"

6"

6"

6"

6"

6"

6"