

O.D.O.T. DISTRICT 2 SURVEY OFFICE (USE ONLY)

PERSONNEL _____ REFERENCE NO. 9 D SHEET 25 OF 50

NOTES RHOADES DATE 4/28/22 ROUTE SR 120
 H.C. O'DONNELL WEATHER SUNNY COUNTY FULTON
 R.C. RHOADES TEMP. 45° TOWNSHIP ROYALTON
 SECTION 9

DWG BY RHOADES PID 99582 T 9 N R 3 E

TYPE MONUMENT MAG/WASHER

ON SURFACE - ~~BELOW~~ ON _____

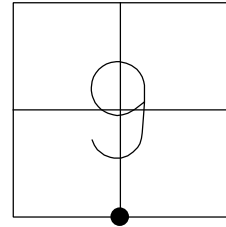
OFFSET \odot PAVEMENT 1.5' LT : ~~RT~~

- TO - EDGE PAVEMENT

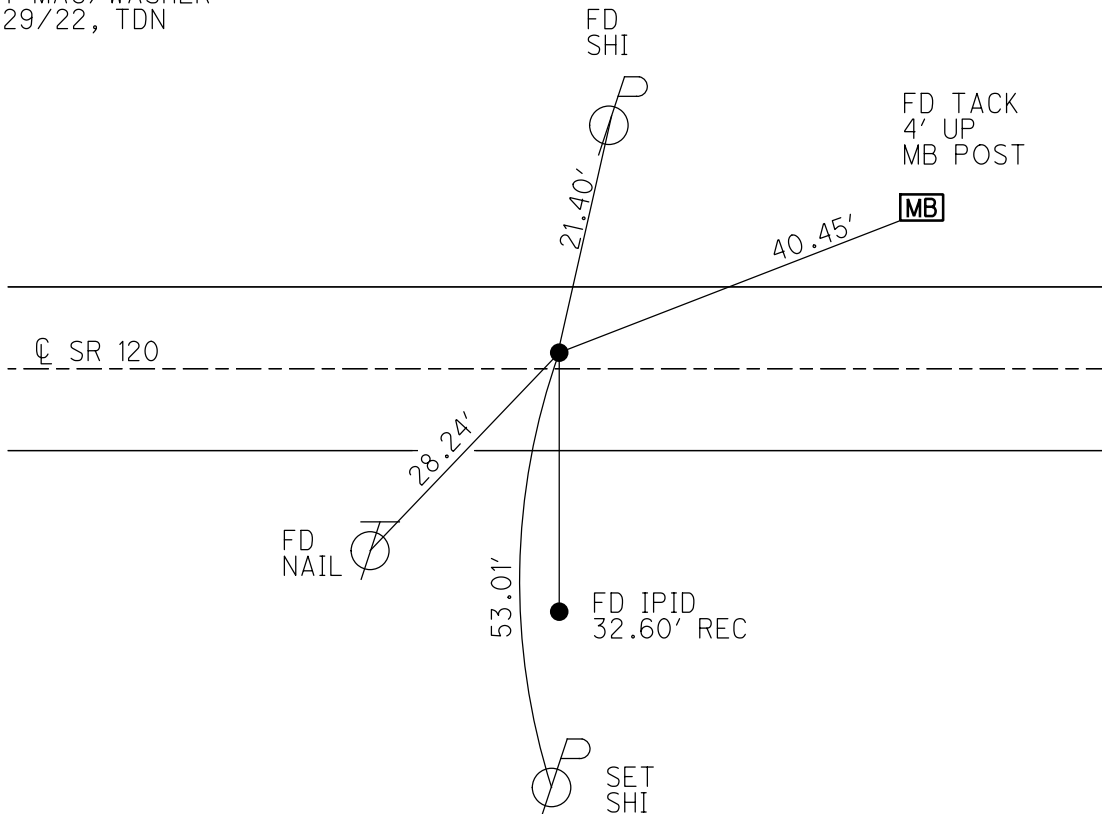
STATION: 306+93

HORZ. DATUM: NAD83 2011 GEOID: NAVD88 2018

GRID: NORTHING: 744445.086 EASTING: 1540872.727



RECORD:
 FD SM.R.R.SPIKE
 8/15/03, DCH
 SET MAG/WASHER
 12/29/03, DCH
 FD MAG/WASHER
 REFD9
 5/7/19, JLL
 SET MAG/WASHER
 7/29/22, TDN



O.D.O.T. DISTRICT 2 SURVEY OFFICE

PERSONNEL _____

REFERENCE NO. 9 D

SHEET 22 OF 45

NOTES HOMAN

DATE 8/15/03

ROUTE SR 120

H.C. HOMAN

WEATHER CLOUDY

COUNTY FULTON

R.C. MEYERS

TEMP. 80°

TOWNSHIP ROYALTON

SECTION 9

T 9 N R 3 E

TYPE MONUMENT SM.R.R.SPIKE

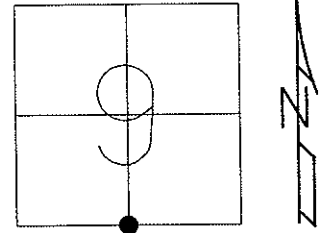
ON SURFACE - ~~BELOW~~ ON

LEFT - ☐ PAV'T - ~~RIGHT~~ 3.5'

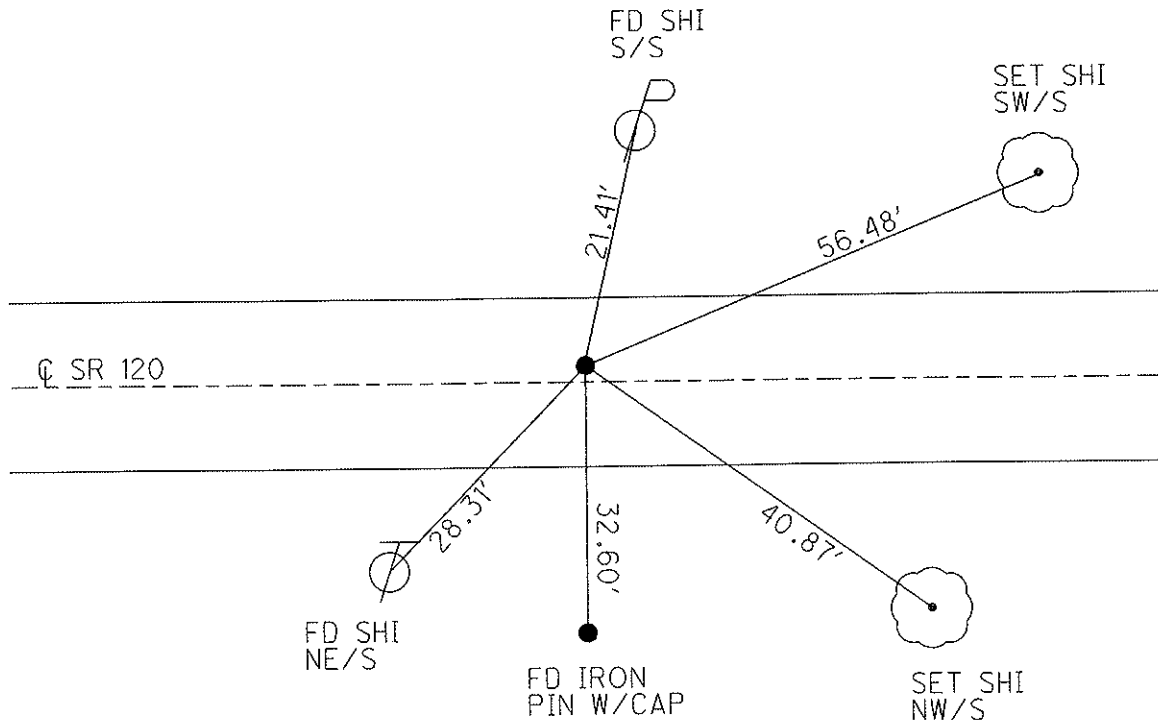
 TO EDGE PAVEMENT

S.L.M. 306+93

Grid: Northing: _____ Easting: _____



SET MAG/WASHER
12/29/03, DCH



O.D.O.T. DISTRICT 2 SURVEY OFFICE

PERSONNEL

REFERENCE NO. 99

SHEET 7 OF 9

NOTES HOMAN

DATE 8-15-03

ROUTE S.R. 120

H.C. HOMAN

WEATHER CLOUDY

COUNTY FULTON

R.C. MEYERS

TEMP. 80°

TOWNSHIP ROYALTON

SECTION 9

T 9 S R 3 E

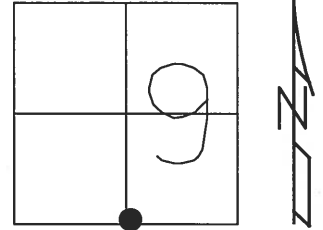
TYPE MONUMENT SM. R.R. SPIKE

ON SURFACE ~~- BELOW~~ ON

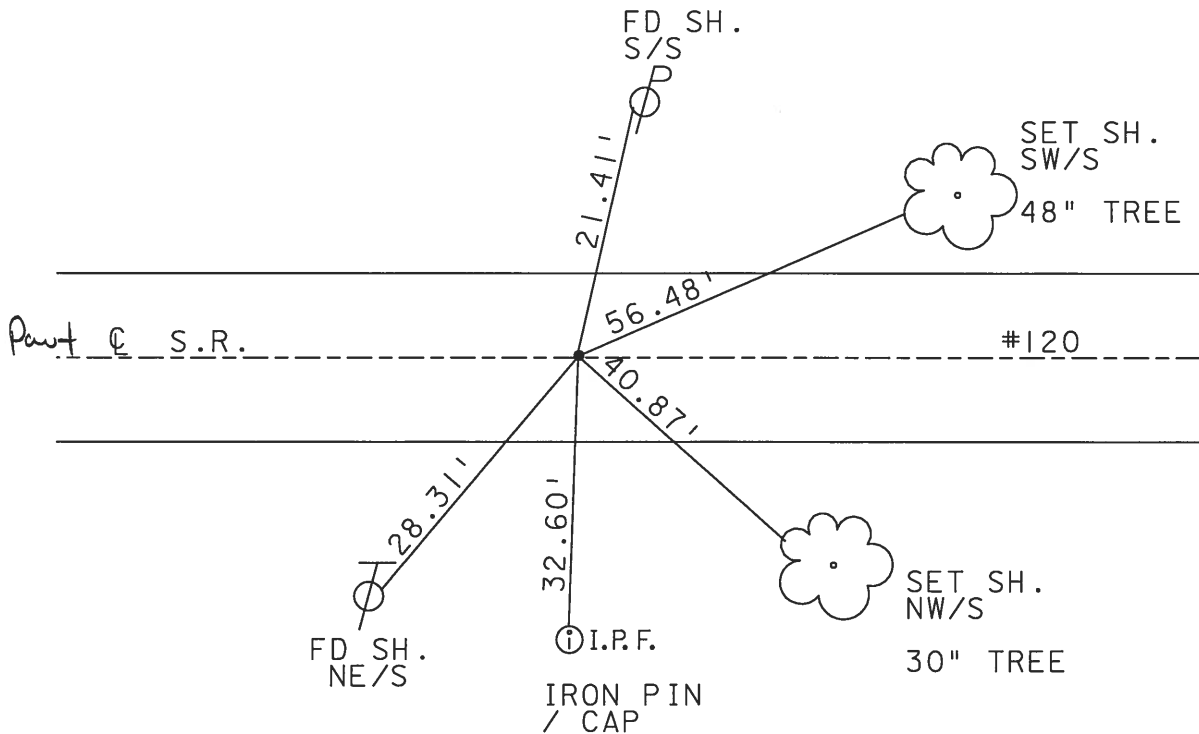
LEFT ~~- C PAV'T - RIGHT~~ 3.5'

TO EDGE PAVEMENT

S.L.M. 306+93



SET MAG & WASHER
12-29-03
DCH



O.D.O.T. DISTRICT 2 SURVEY OFFICE

PERSONNEL

REFERENCE NO. 9D

SHEET 16 OF 20

NOTES 1. Stone

H.C. D. Curtis

R.C. J. Hauscholder

DATE 14 June 90

WEATHER Warm

TEMP. 76°

ROUTE SR#120

COUNTY Fulton

TOWNSHIP Royalton

SECTION 9

T R

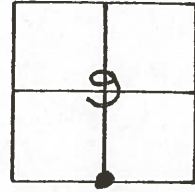
TYPE MONUMENT 1" sq. bolt

ON SURFACE - BELOW 3" deep

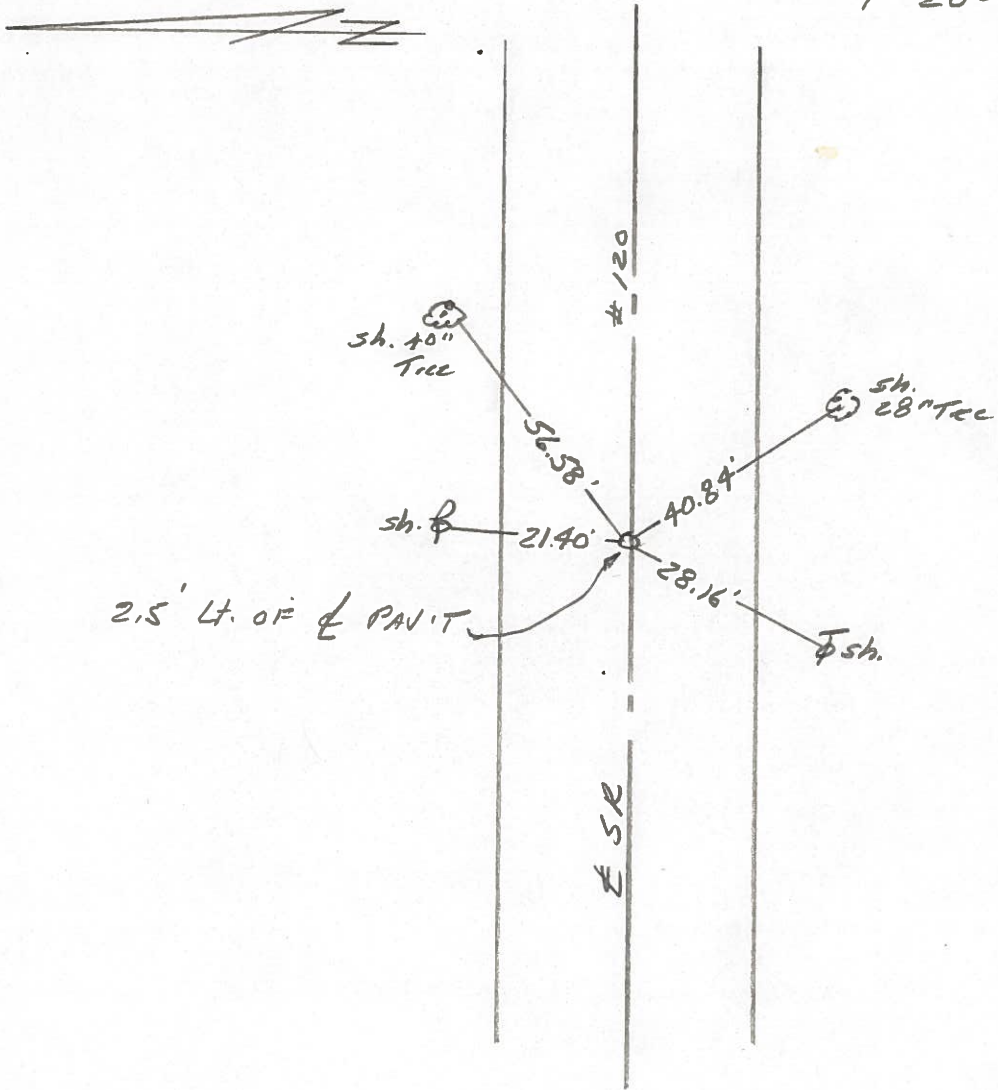
LEFT ~~PAV'T.~~ RIGHT 3.5' Lt.

TO EDGE PAVEMENT

S.L.M. 306+93



SET R.R. SPK. TO SURFACE
9-20-90
d/c



County Fulton S.R. 120

Date 19 Sept. 84

Township Royalton

Weather Mild

Section 9-16

Temp. 75°

T N, R E

Personnel D. Curtis

P. Neuser

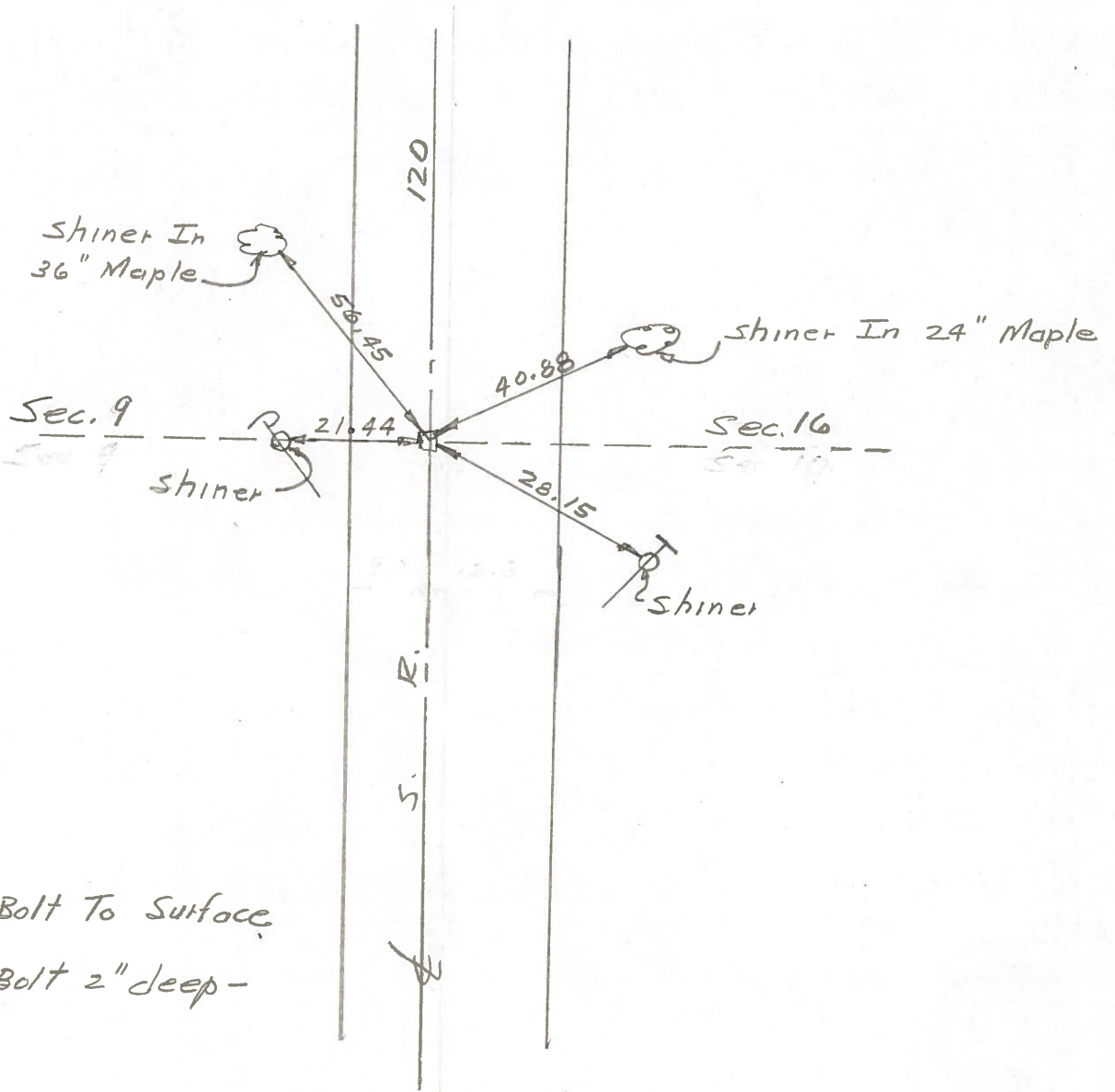
R. Michalak

#9D

9	9
17	16



SLM 307+20



Fd. 1" Sq. Bolt To Surface

Fd. 1" Sq. Bolt 2" deep -
9-19-84