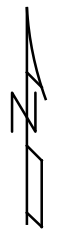
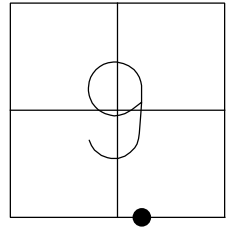


O.D.O.T. DISTRICT 2 SURVEY OFFICE (USE ONLY)

PERSONNEL \_\_\_\_\_ REFERENCE NO. 9 E SHEET 26 OF 50  
 NOTES RHOADES DATE 4/28/22 ROUTE SR 120  
 H.C. O'DONNELL WEATHER SUNNY COUNTY FULTON  
 R.C. RHOADES TEMP. 45° TOWNSHIP ROYALTON  
 DWG BY RHOADES PID 99582 SECTION 9  
 T 9 N R 3 E

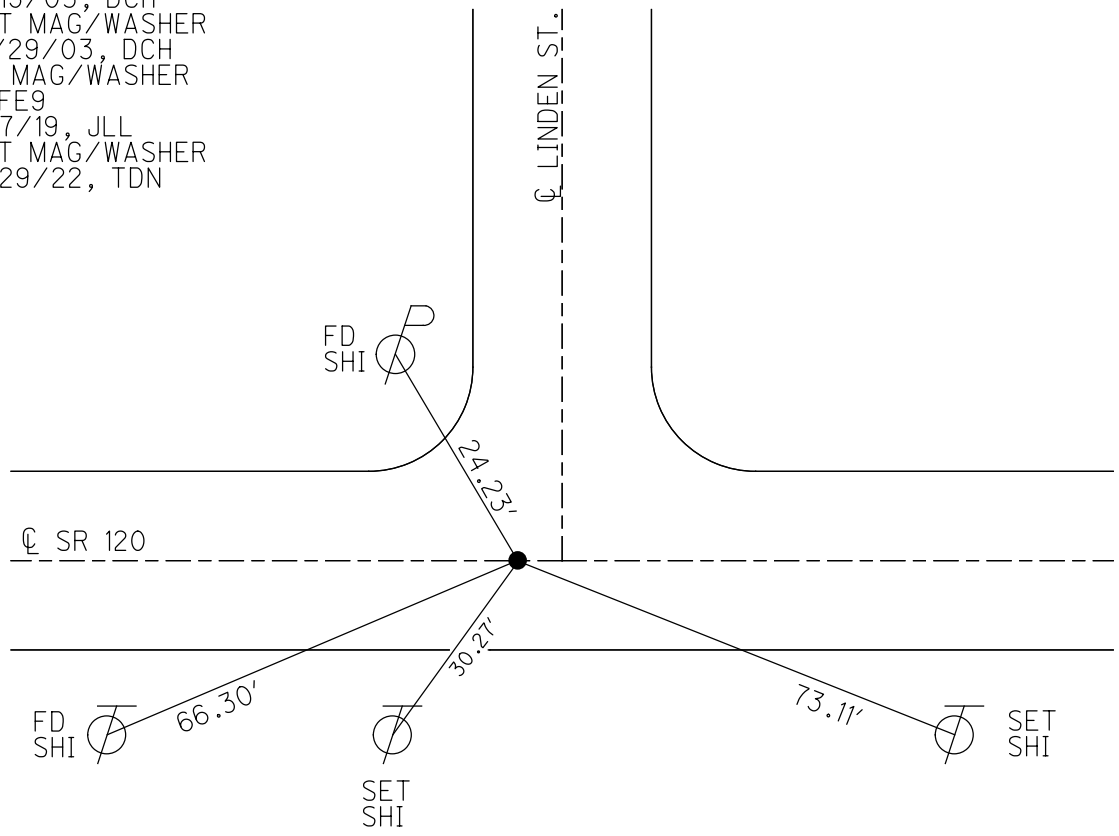
TYPE MONUMENT MAG NAIL  
 ON SURFACE - ~~BELOW~~ ON \_\_\_\_\_  
 OFFSET  $\phi$  PAVEMENT 3.5' LT : ~~RT~~  
 - TO - EDGE PAVEMENT  
 STATION: 310+09



HORZ. DATUM: NAD83 2011 GEOID: NAVD88 2018  
 GRID: NORTHING: 744447.282 EASTING: 1541188.196

RECORD:  
 FD MAG/WASHER  
 8/15/03, DCH  
 SET MAG/WASHER  
 12/29/03, DCH  
 FD MAG/WASHER  
 REFE9  
 5/7/19, JLL  
 SET MAG/WASHER  
 7/29/22, TDN

NOTE: 1" SQ. BOLT WAS REMOVED,  
 DUE TO SANITARY SEWER PROJECT.  
 8/15/03, DCH



O.D.O.T. DISTRICT 2 SURVEY OFFICE

PERSONNEL \_\_\_\_\_

REFERENCE NO. 9 E

SHEET 23 OF 45

NOTES HOMAN

DATE 8/15/03

ROUTE SR 120

H.C. HOMAN

WEATHER CLOUDY

COUNTY FULTON

R.C. MEYERS

TEMP. 85°

TOWNSHIP ROYALTON

SECTION 9

T. 9 N R. 3 E

TYPE MONUMENT MAG/WASHER

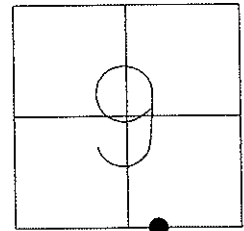
ON SURFACE - ~~BELOW~~ ON

LEFT - Q PAV'T - ~~RIGHT~~ 4'

TO EDGE PAVEMENT

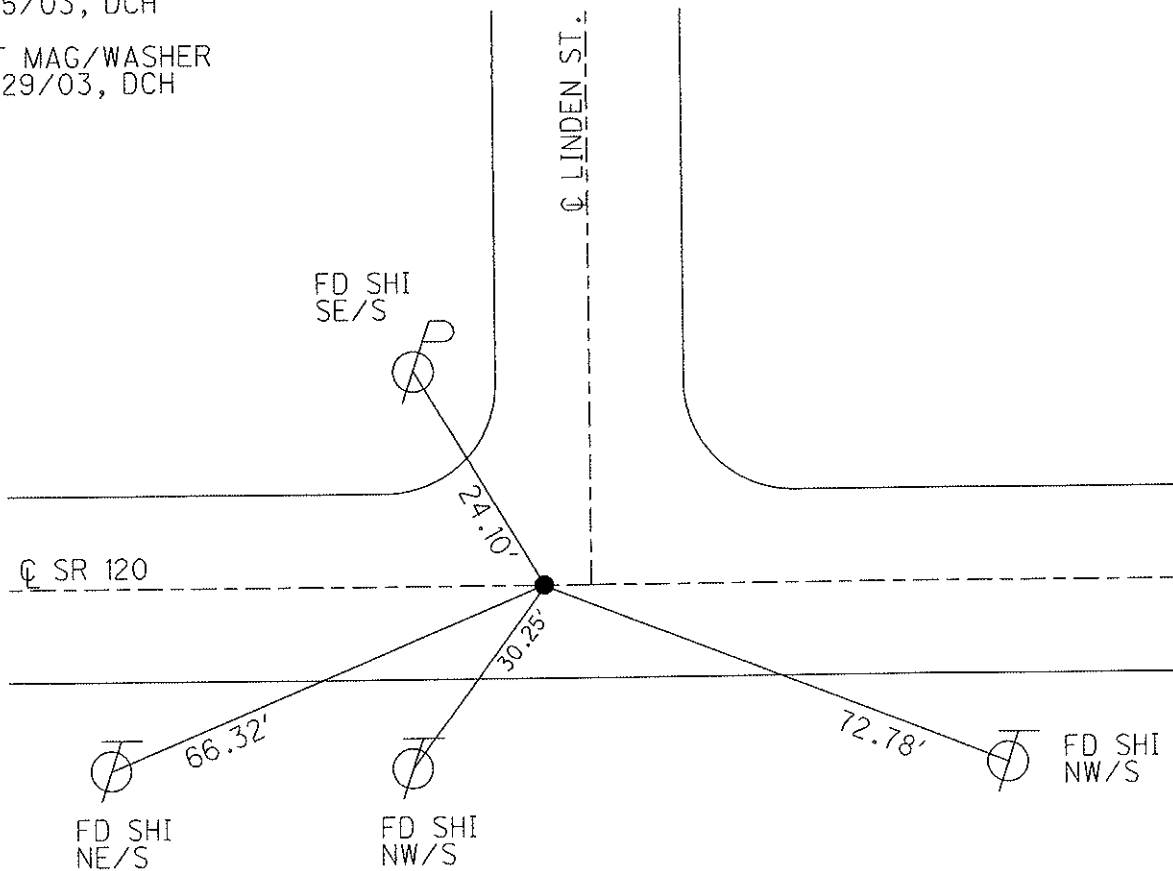
S.L.M. 310+09

Grid: Northing: \_\_\_\_\_ Easting: \_\_\_\_\_



NOTE: 1 1/2" SQ. BOLT WAS REMOVED,  
DUE TO SANITARY SEWER PROJECT.  
8/15/03, DCH

SET MAG/WASHER  
12/29/03, DCH



O.D.O.T. DISTRICT 2 SURVEY OFFICE

PERSONNEL \_\_\_\_\_

REFERENCE NO. 9E

SHEET 8 OF 9

NOTES HOMAN

DATE 8-15-03

ROUTE S.R. 120

H.C. HOMAN

WEATHER CLOUDY

COUNTY FULTON

R.C. MEYERS

TEMP. 85°

TOWNSHIP ROYALTON

SECTION 9

T 9 S R 3 E

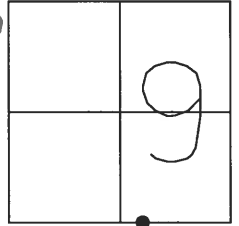
TYPE MONUMENT \_\_\_\_\_ GONE (1 1/2" sq. Bolt was removed)

ON SURFACE - BELOW \_\_\_\_\_ (Due to sanitary sewer project)

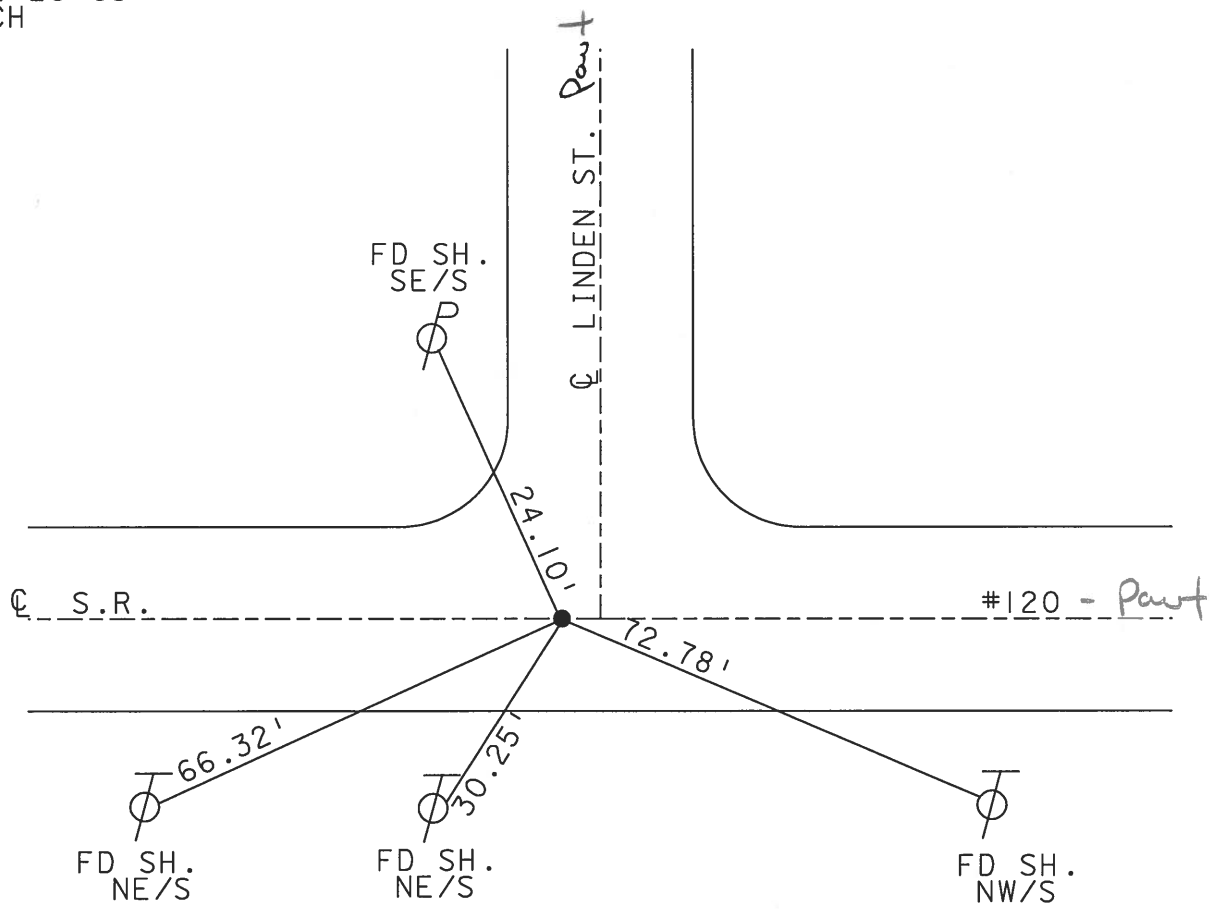
LEFT - C PAVT - ~~RIGHT~~ \_\_\_\_\_ 4'

\_\_\_\_\_ TO \_\_\_\_\_ EDGE PAVEMENT

S.L.M. \_\_\_\_\_ 310+09



SET MAG & WASHER  
12-29-03  
DCH



# O.D.O.T. DISTRICT 2 SURVEY OFFICE

PERSONNEL

REFERENCE NO. 9E

SHEET 17 OF 20

NOTES 1. Stone

H.C. D. Curtis

DATE 14 June 90

ROUTE SR#120

R.C. J. Housholder

WEATHER Warm

COUNTY Fulton

TEMP. 76°

TOWNSHIP Royalton

SECTION 9

T      R     

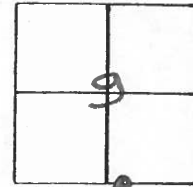
TYPE MONUMENT 1 1/2" Sq. Bolt

ON SURFACE - BELOW 3" deep

LEFT - ~~E~~ PAV'T. - RIGHT 4' (±) Lt.

     TO      EDGE PAVEMENT

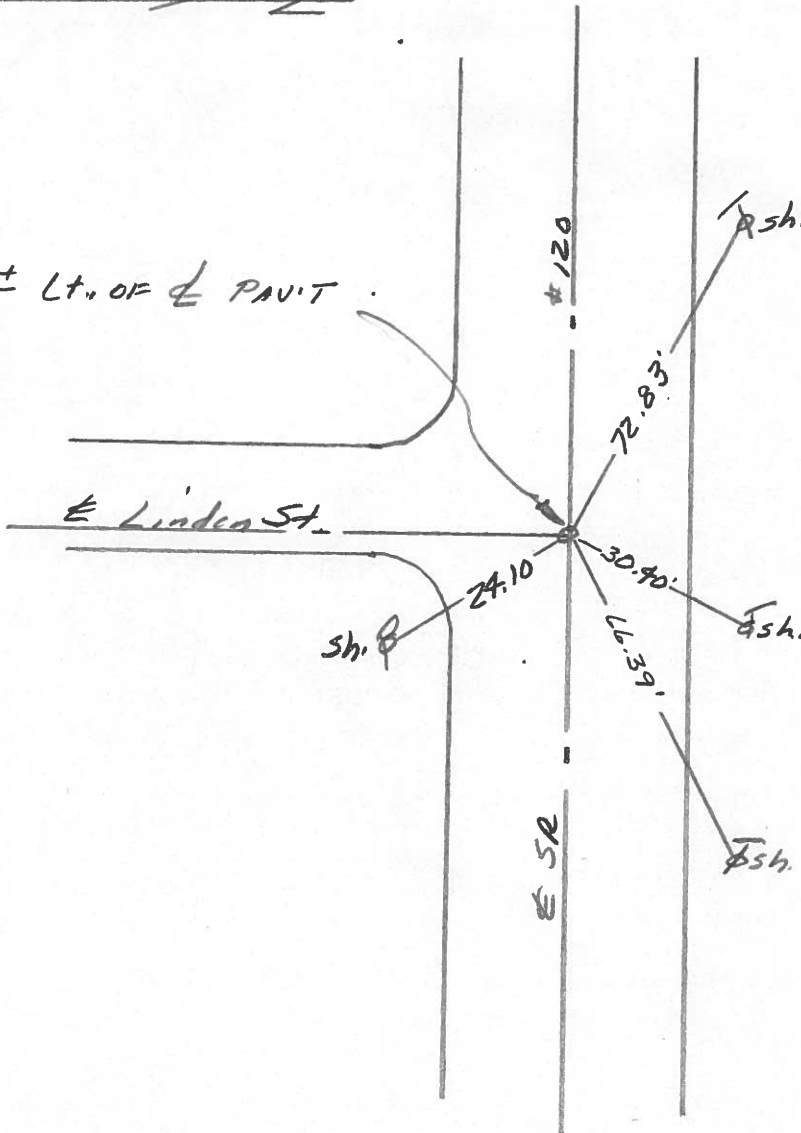
S.L.M. 310+09



SET R.R. SPK. TO SURFACE  
9-20-90  
WJC



4' ± Lt. OF ~~E~~ PAV'T.



County Fulton S.R. 120

Date 19 Sept. 84

Township Royalton

Weather Mild

Section 9-16

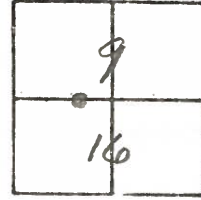
Temp. 75°

T N, R E

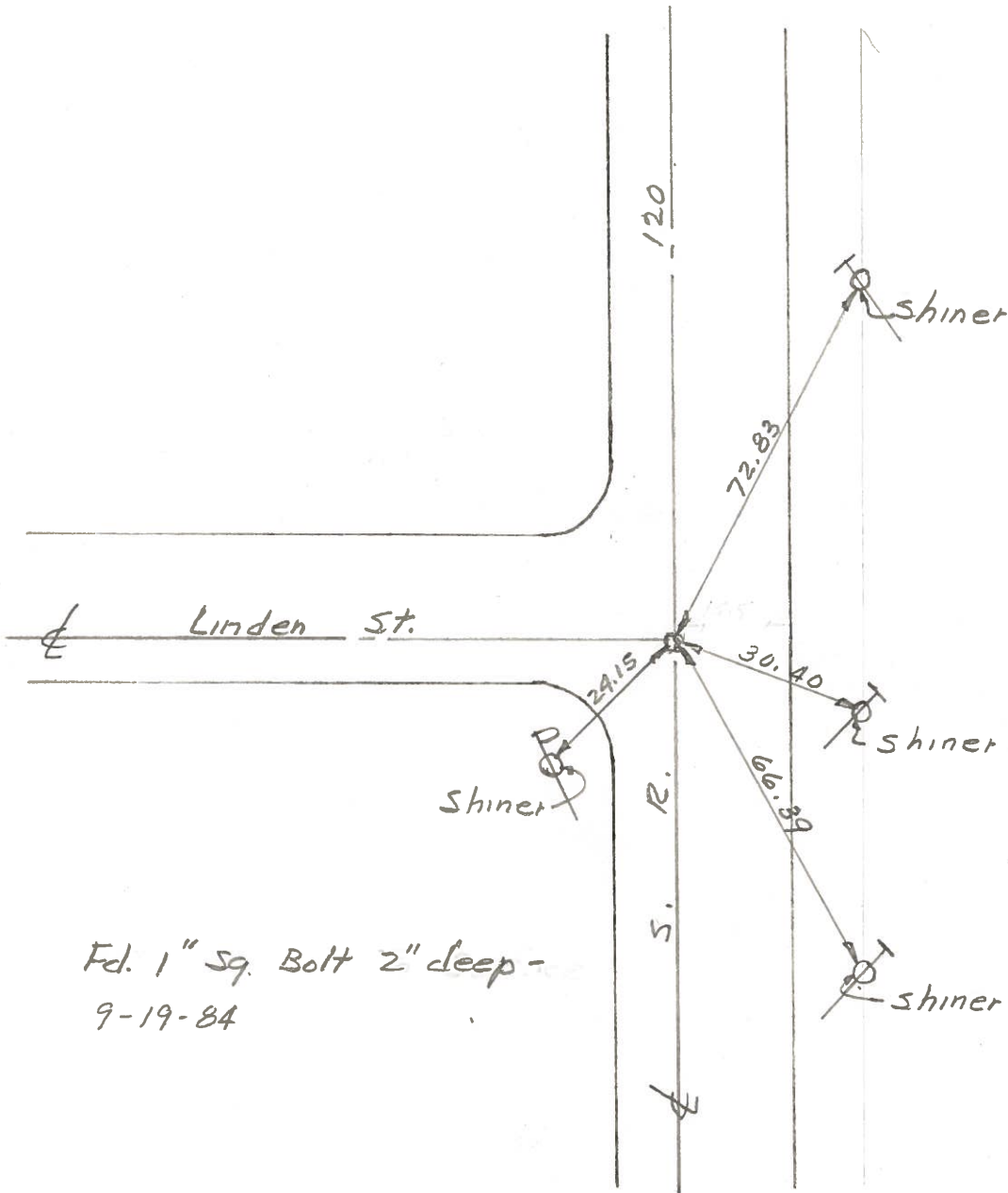
Personnel D. Curtis

P. Neuser

R. Michalak



9E



Fd. 1" Sq. Bolt 2" deep -  
9-19-84