

O.D.O.T. DISTRICT 2 SURVEY OFFICE (USE ONLY)

PERSONNEL

REFERENCE NO. 14

SHEET 32 OF 47

NOTES RHOADES

DATE 4/29/19

ROUTE SR 120

H.C. O'DONNELL

WEATHER RAIN

COUNTY FULTON

R.C. O'DONNELL

TEMP. 46°

TOWNSHIP ROYALTON

SECTION 12

DWG BY NASON PID 101243

T 9 N R 3 E

TYPE MONUMENT MAG/WASHER

ON SURFACE - ~~BELOW~~ ON

OFFSET Q PAVEMENT ON LT : RT

10' TO LT EDGE PAVEMENT

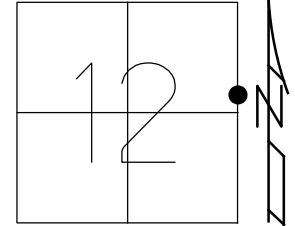
STATION: 501+60

HORZ.DATUM: NAD83 (2011)

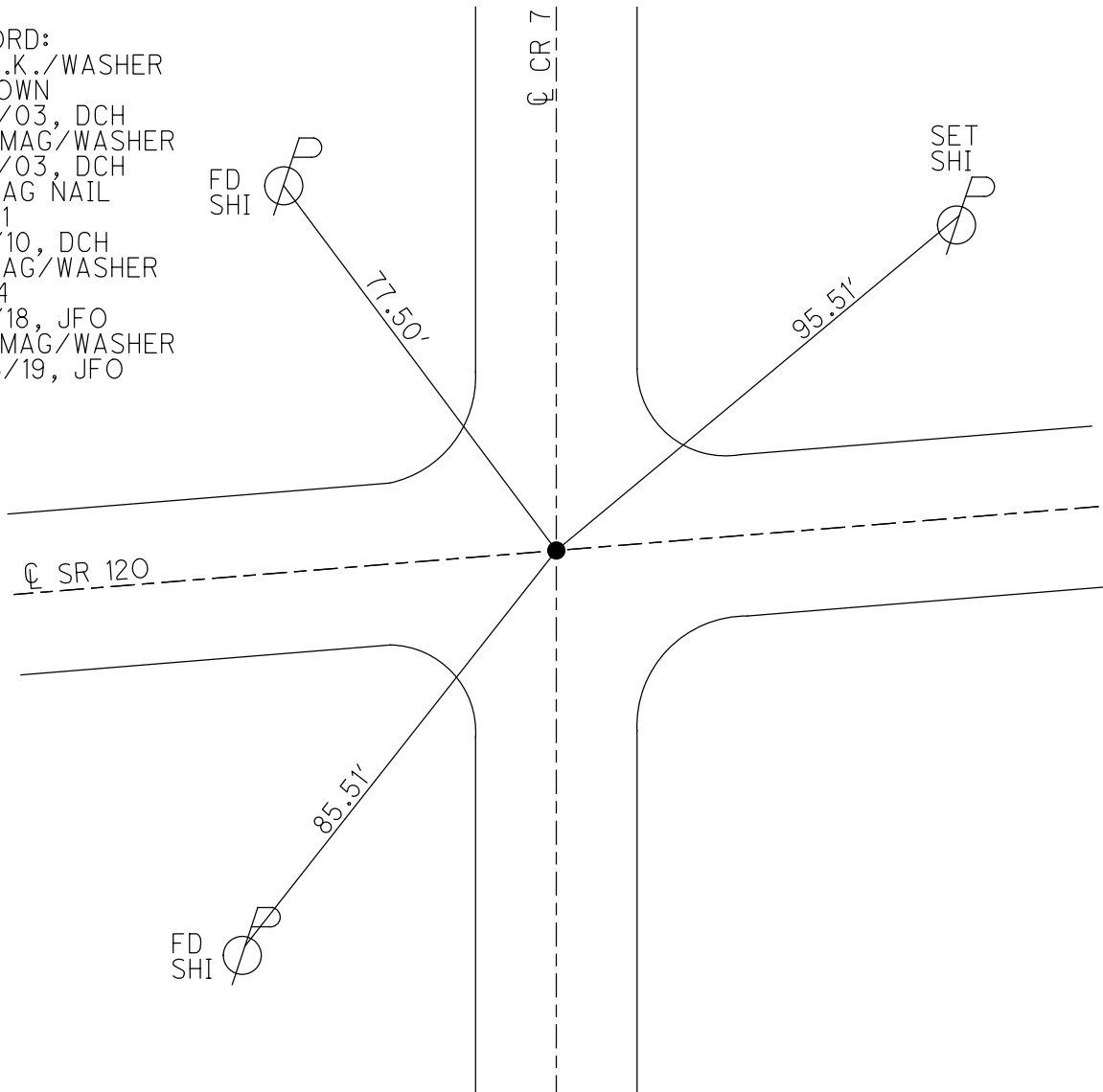
GEOID: 2012A

GRID: NORTHING: 747941.840

EASTING: 1559350.479



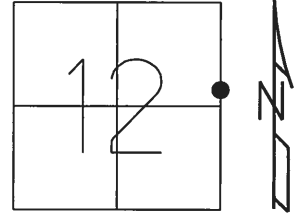
RECORD:
 FD P.K./WASHER
 3" DOWN
 8/15/03, DCH
 SET MAG/WASHER
 8/15/03, DCH
 FD MAG NAIL
 REF31
 6/8/10, DCH
 FD MAG/WASHER
 REF14
 3/5/18, JFO
 SET MAG/WASHER
 7/26/19, JFO



O.D.O.T. DISTRICT 2 SURVEY OFFICE (USE ONLY)

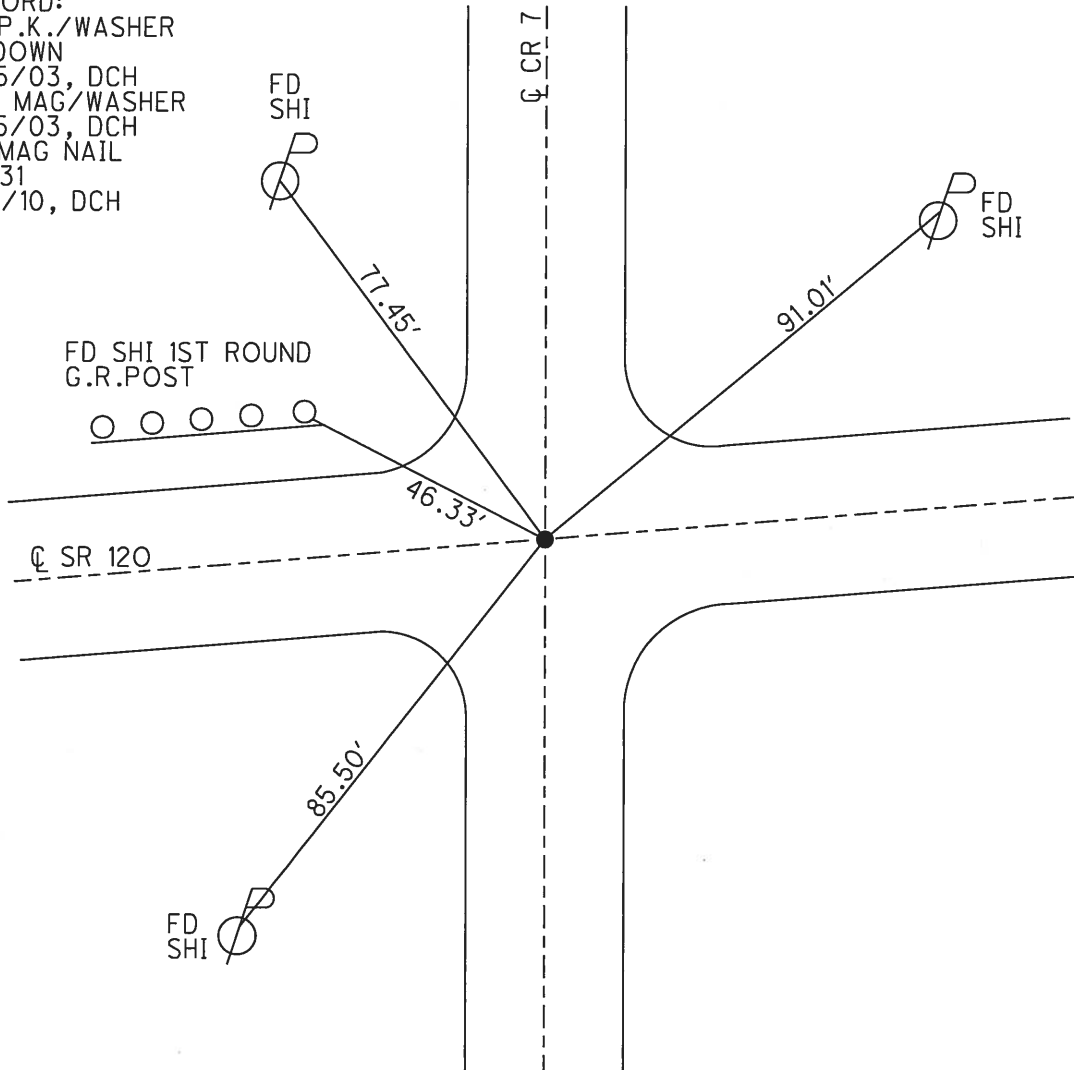
PERSONNEL	REFERENCE NO.	<u>14</u>	SHEET	<u>32</u>	OF	<u>45</u>
NOTES	HOMAN	DATE	<u>5/11/12</u>	ROUTE	<u>SR 120</u>	
H.C.	ROUSOS	WEATHER	<u>SUNNY</u>	COUNTY	<u>FULTON</u>	
R.C.	HOMAN	TEMP.	<u>65°</u>	TOWNSHIP	<u>ROYALTON</u>	
				SECTION	<u>12</u>	
					<u>T 9 N R 3 E</u>	

TYPE MONUMENT MAG NAIL
 ON SURFACE - ~~BELOW~~ ON
 LEFT - Q PAV'T - RIGHT ON
10' TO LT EDGE PAVEMENT
 S.L.M. 501+19.5



GRID: NORTHING: 747941.837 EASTING: 1559350.474

RECORD:
 FD P.K./WASHER
 3" DOWN
 8/15/03, DCH
 SET MAG/WASHER
 8/15/03, DCH
 FD MAG NAIL
 REF31
 6/8/10, DCH



O.D.O.T. DISTRICT 2 SURVEY OFFICE

PERSONNEL

REFERENCE NO. 14

SHEET 32 OF 45

NOTES FINGER

DATE 5/20/11

ROUTE SR 120

H.C. LUMBREZER

WEATHER CLOUDY

COUNTY FULTON

R.C. MOSER

TEMP. 65°

TOWNSHIP ROYALTON

SECTION 12

T 9 N R 3 E

TYPE MONUMENT MAG/WASHER

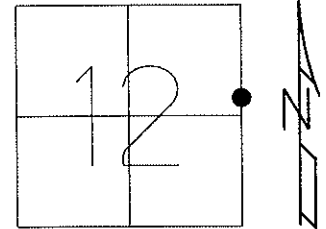
ON SURFACE - ~~BELOW~~ ON

LEFT - Q PAV'T - RIGHT ON

10' TO LT. EDGE PAVEMENT

S.L.M. 501+28

Grid: Northing: 747941.847 Easting: 1559350.443



SET MAG/WASHER
8/15/03, DCH

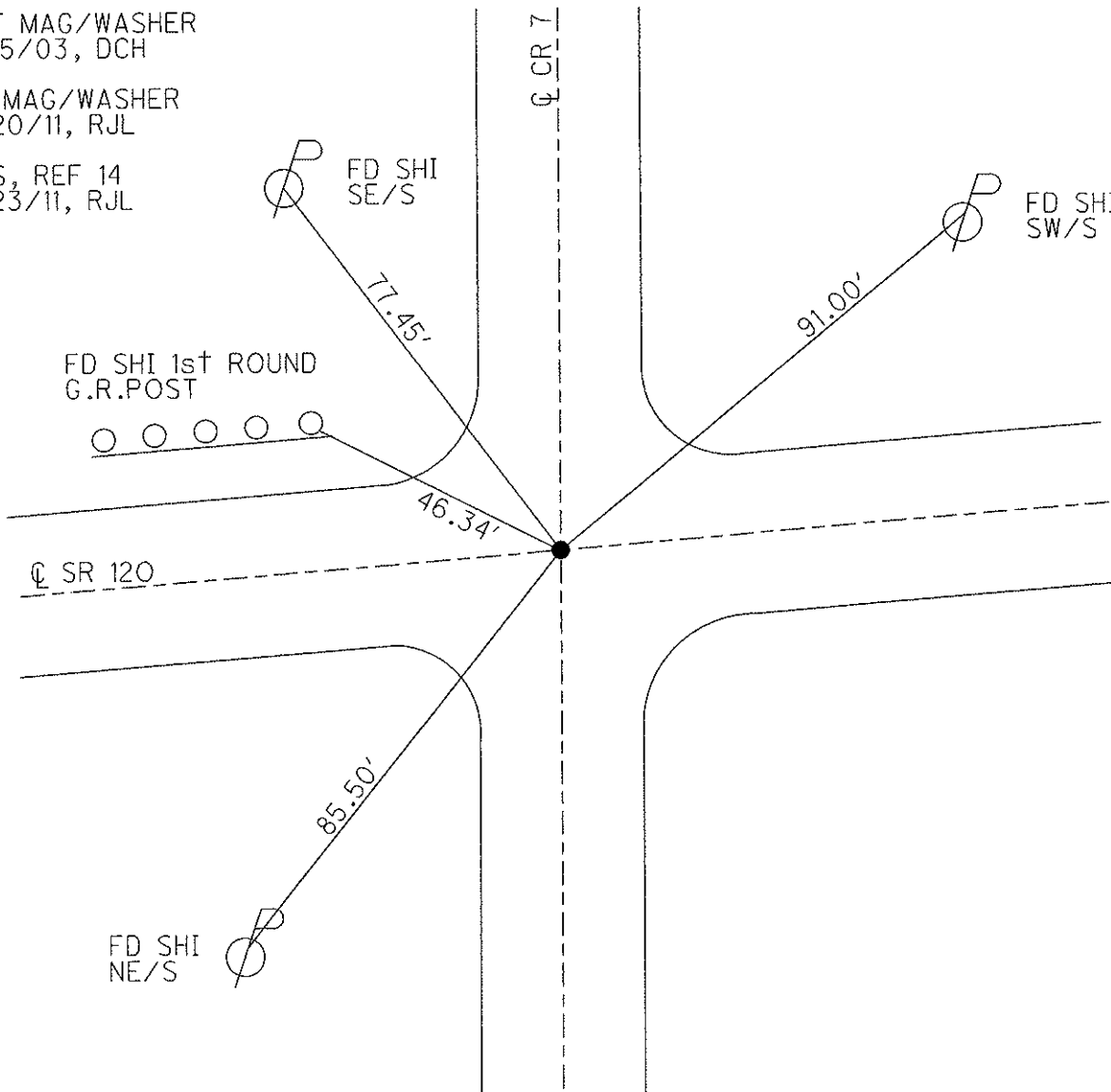
FD MAG/WASHER
5/20/11, RJL

GPS, REF 14
5/23/11, RJL

FD SHI
SE/S

FD SHI
SW/S

FD SHI 1st ROUND
G.R. POST



O.D.O.T. DISTRICT 2 SURVEY OFFICE

PERSONNEL

REFERENCE NO. 14

SHEET 8 OF 18

NOTES HOMAN

DATE 8-15-03

ROUTE SR 120

H.C. HOMAN

WEATHER CLOUDY

COUNTY FULTON

R.C. MEYERS

TEMP. 85°

TOWNSHIP ROYALTON

SECTION 12

T 9 S R 3 E

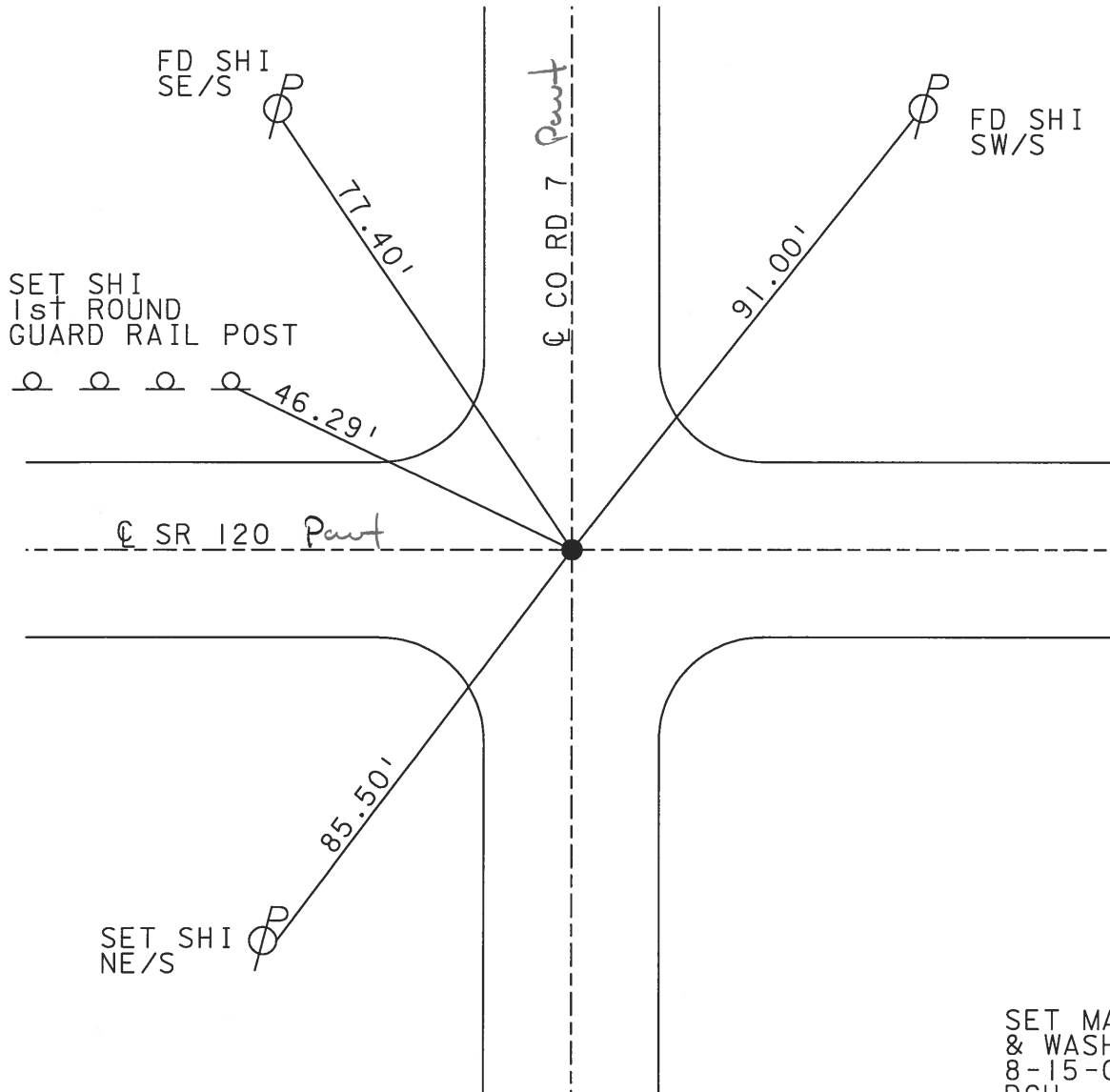
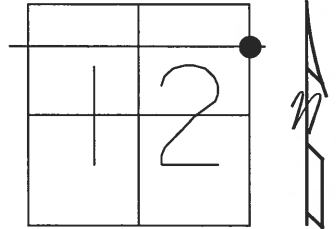
TYPE MONUMENT PK & WASHER

~~ON SURFACE~~ - ~~BELOW~~ 3"

~~LEFT - Q~~ PAV'T - ~~RIGHT~~ ON

TO EDGE PAVEMENT

S.L.M. 501+28



O.D.O.T. DISTRICT 2 SURVEY OFFICE

PERSONNEL _____

REFERENCE NO. 14

SHEET 3 OF _____

NOTES 1. Stone

H.C. D. Curtis

R.C. J. Hausholder

DATE 17 April 91

WEATHER Cool

TEMP. 56°

ROUTE SR #120

COUNTY Fulton

TOWNSHIP Royalton

SECTION 12

T _____ R _____

TYPE MONUMENT PK Nail

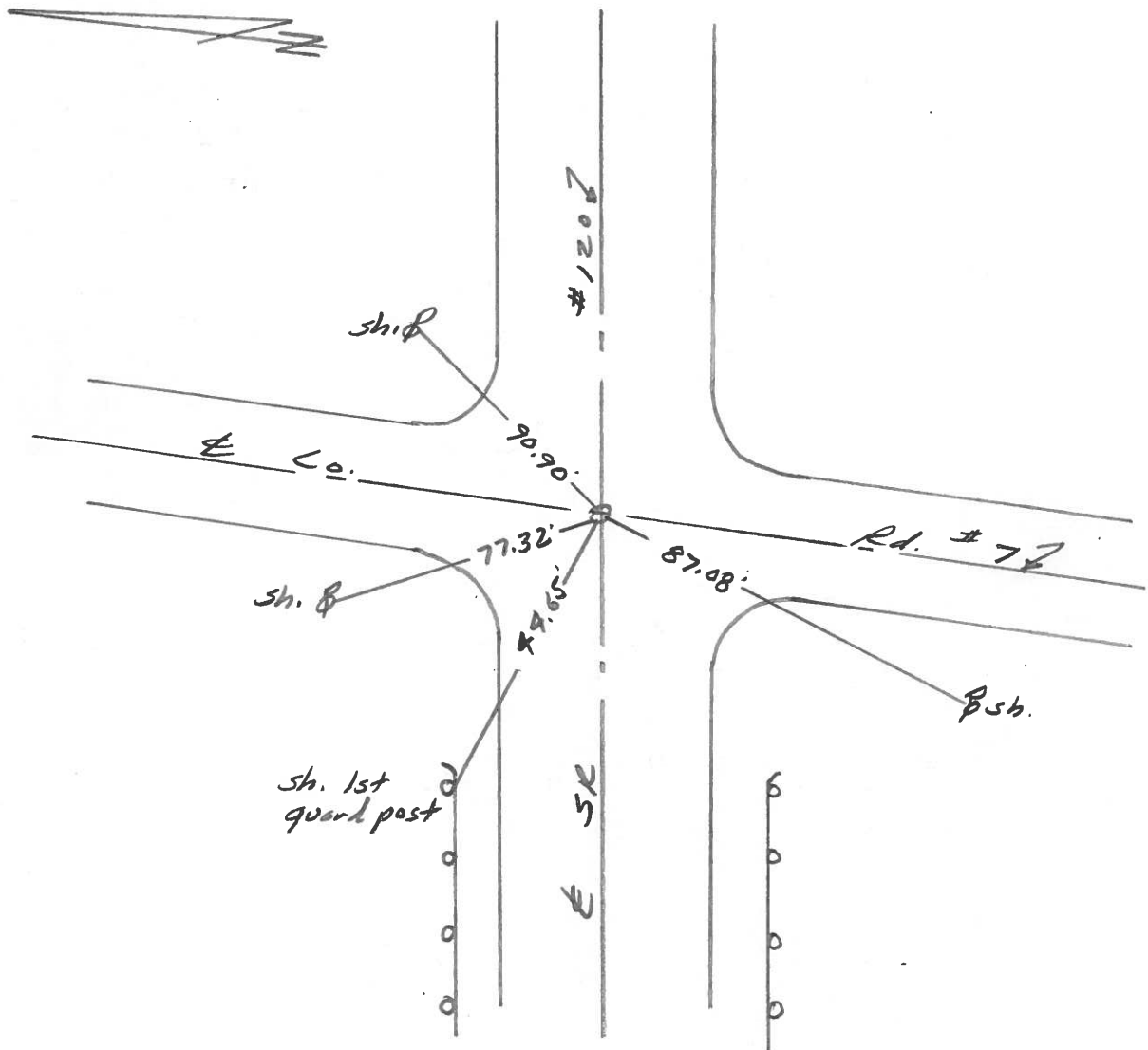
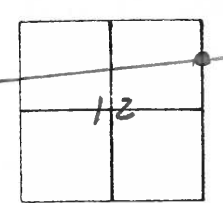
ON SURFACE - BELOW Surface

LEFT - & PAV'T. - RIGHT & S.R. 120

TO _____ EDGE PAVEMENT

S.L.M. 501+28

Pt. Exposed
3" Deep
As of 3-18-92



OD.O.T. DISTRICT 2 SURVEY OFFICE

SHEET 4 OF

County Fulton S.R. 120

Date 12 May 81

Township Royalton

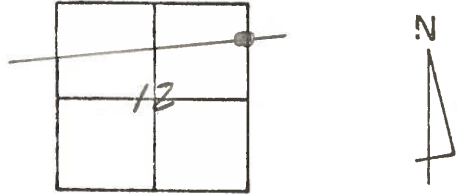
Weather Clear

Section 12

Temp. 57°

T N, R E

Personnel I. Stone

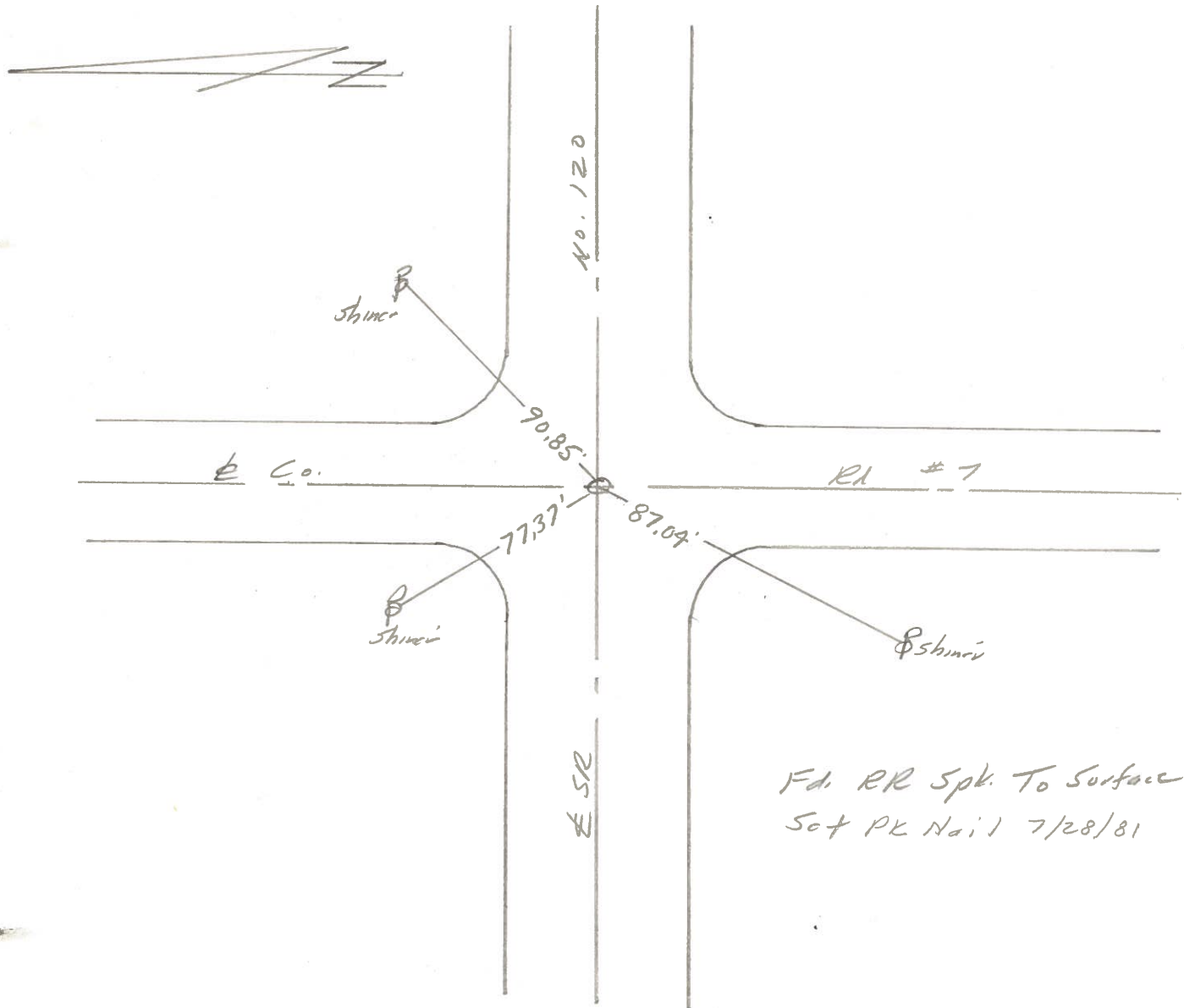


P. Newson

R. Michalak

D. Curtis

Ref. No. 14



Fd. RR Spk. To Surface
Set PK Nail 7/28/81

PERSONNEL	TITLE	PERSONNEL	TITLE
Tomsic			
Granata			
Vanyo			
Boyle			

COUNTY Fulton DATE July 11, 1973

S. R. 120 WEATHER _____

SEC Royalton - Amboy Twp. TEMP _____

DESCRIPTION _____ LEFT _____ CENTER LINE _____ RIGHT _____ JOB NO. _____

