

O.D.O.T. DISTRICT 2 SURVEY OFFICE (USE ONLY)

PERSONNEL

REFERENCE NO. 16

SHEET 40 OF 47

NOTES RHOADES

DATE 5/2/19

ROUTE SR 120

H.C. O'DONNELL

WEATHER CLOUDY

COUNTY FULTON

R.C. RHOADES

TEMP. 54°

TOWNSHIP AMBOY

SECTION 8

DWG BY NASON PID 101243

T 9 N R 4 E

TYPE MONUMENT MAG/WASHER

ON SURFACE - ~~BELOW~~ ON

OFFSET Q PAVEMENT 1.0' LT : RT

11.2" TO RT EDGE PAVEMENT

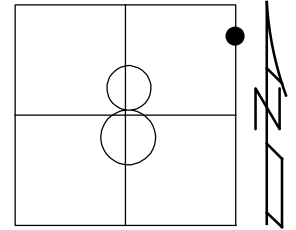
STATION: 614+08.91

HORIZ.DATUM: NAD83 (2011)

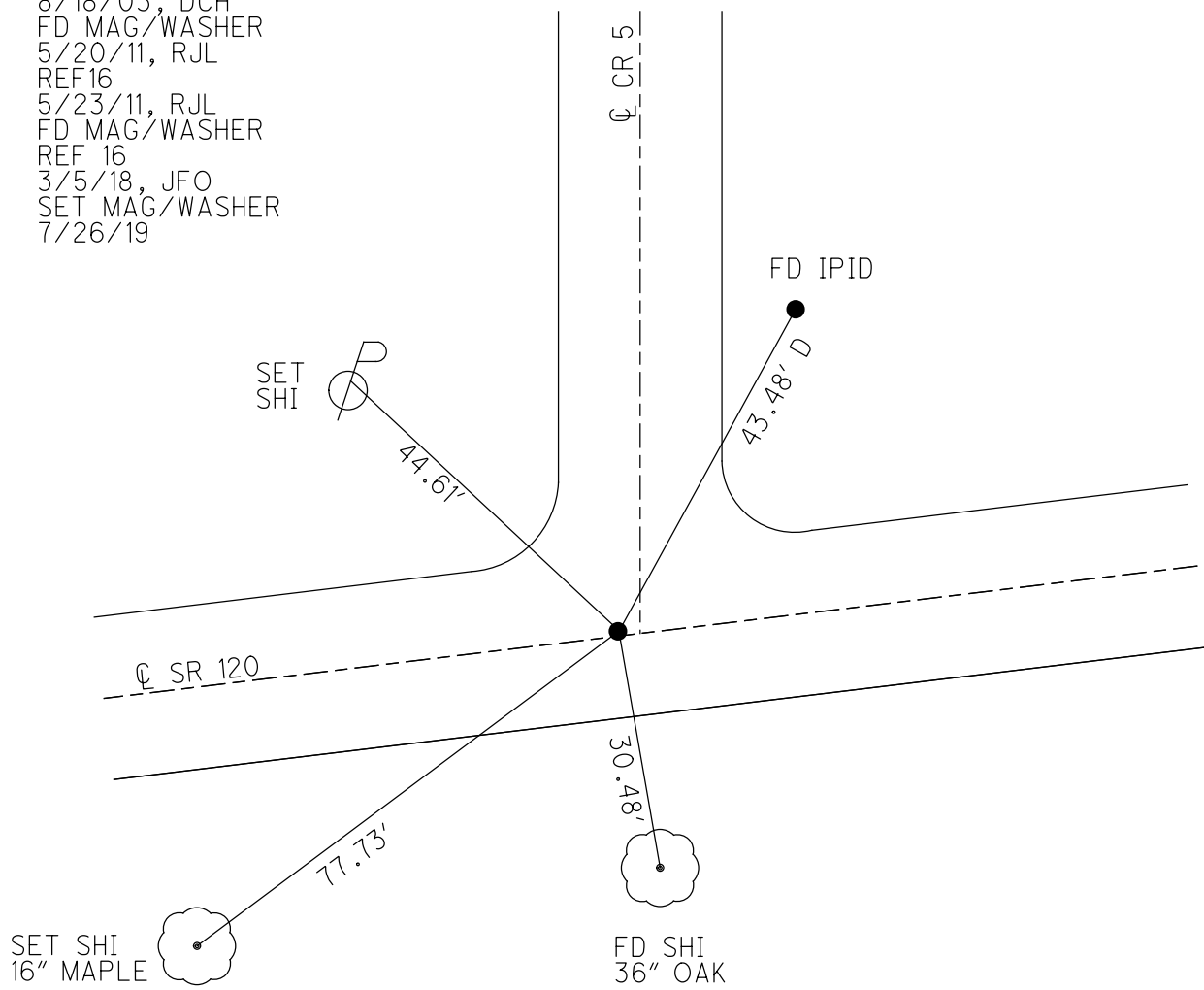
GEOID: 2012A

GRID: NORTHING: 748907.864

EASTING: 1570556.673



SET MAG/WASHER  
8/18/03, DCH  
FD MAG/WASHER  
5/20/11, RJL  
REF16  
5/23/11, RJL  
FD MAG/WASHER  
REF 16  
3/5/18, JFO  
SET MAG/WASHER  
7/26/19



O.D.O.T. DISTRICT 2 SURVEY OFFICE

PERSONNEL

REFERENCE NO. 16

SHEET 40 OF 45

NOTES FINGER

DATE 5/20/11

ROUTE SR 120

H.C. LUMBREZER

WEATHER CLOUDY

COUNTY FULTON

R.C. MOSER

TEMP. 65°

TOWNSHIP AMBOY

SECTION 8

T 9 N R 4 E

TYPE MONUMENT MAG/WASHER

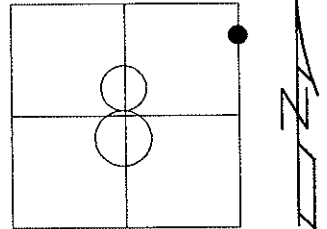
ON SURFACE - ~~BELOW~~ ON

LEFT - Q PAV'T - ~~RIGHT~~ 1.0'

11.2' TO RT EDGE PAVEMENT

S.L.M. 613+75

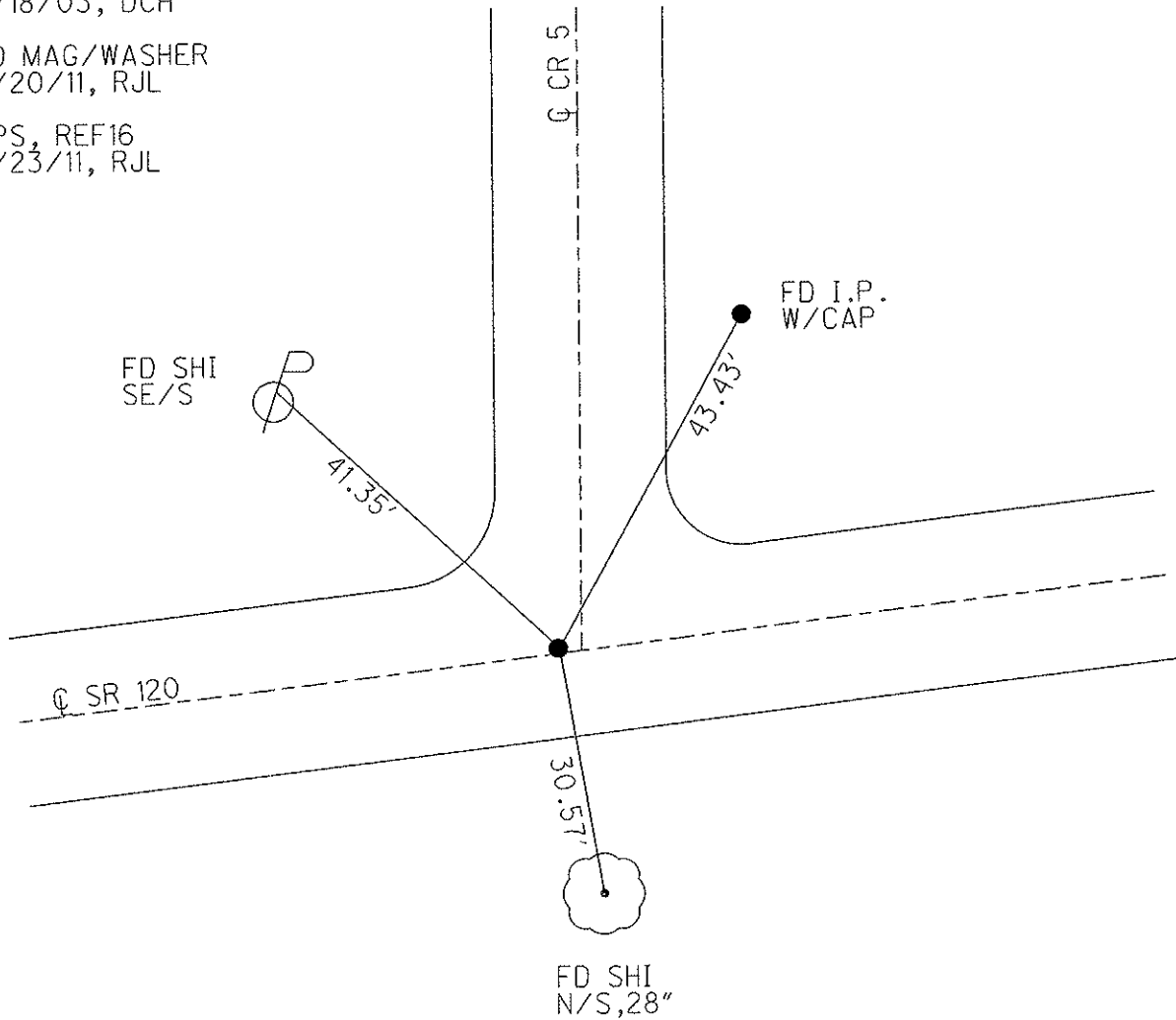
Grid: Northing: 748907.784 Easting: 1570556.644



SET MAG/WASHER  
8/18/03, DCH

FD MAG/WASHER  
5/20/11, RJL

GPS, REF16  
5/23/11, RJL



O.D.O.T. DISTRICT 2 SURVEY OFFICE

PERSONNEL

REFERENCE NO. 16

SHEET 16 OF 18

NOTES HOMAN

DATE 8-18-03

ROUTE S.R. 120

H.C. NUFER

WEATHER SUNNY

COUNTY FULTON

R.C. MEYERS

TEMP. 75°

TOWNSHIP AMBOY

SECTION 8

T 9 S R 4 E

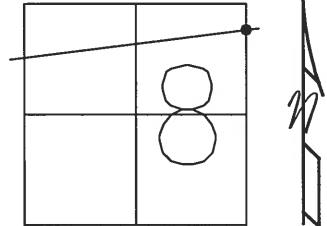
TYPE MONUMENT PK NAIL & WASHER

ON SURFACE -BELOW ON

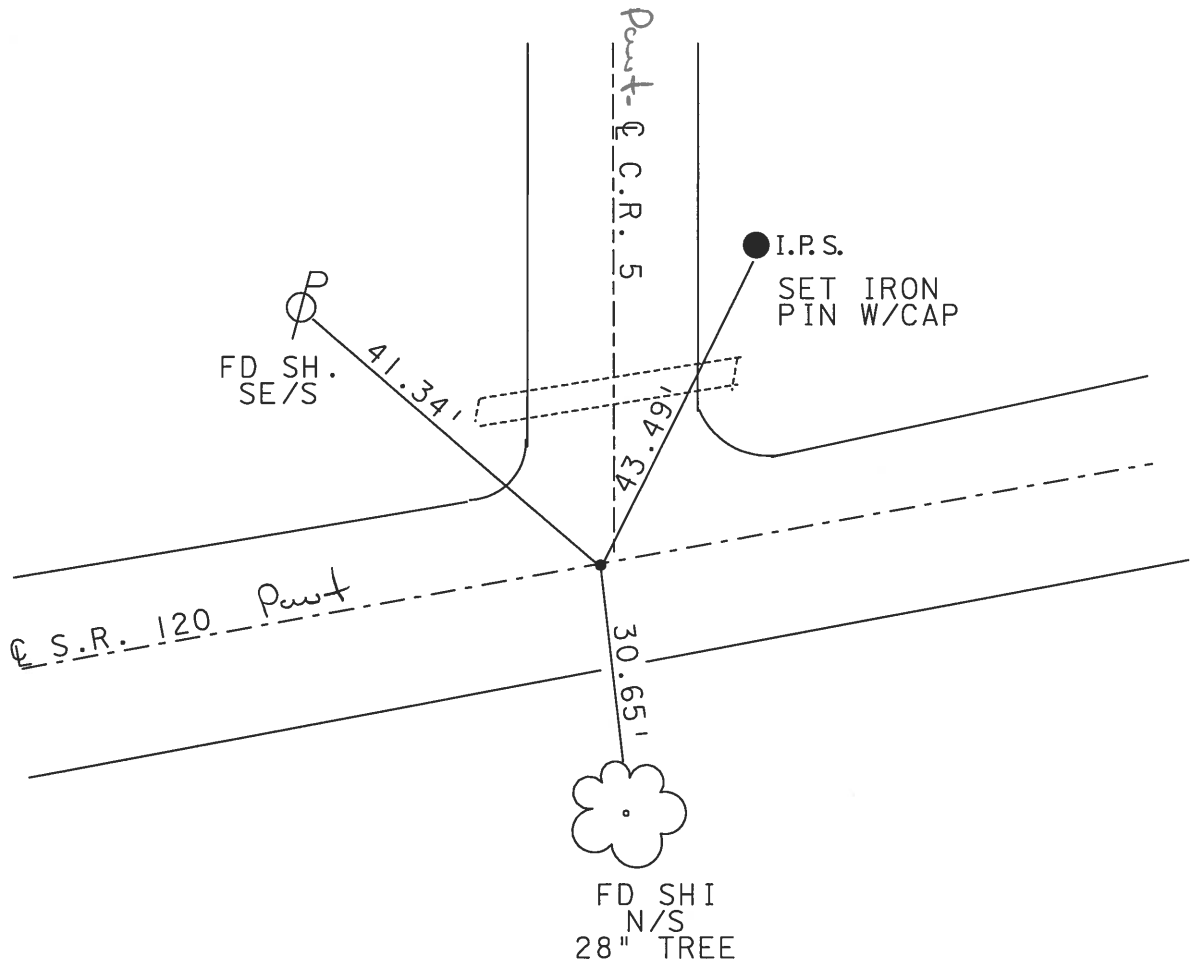
LEFT - Q PAV'T - RIGHT 1.0'

11' TO RT EDGE PAVEMENT

S.L.M. 613+75



SET MAG & WASHER  
8-18-03  
DCH



# O.D.O.T. DISTRICT 2 SURVEY OFFICE

PERSONNEL \_\_\_\_\_

REFERENCE NO. 16-

SHEET 11 OF \_\_\_\_\_

NOTES 1. Stone

H.C. D. Curtis

R.C. J. Hausholder

DATE 19 April 91

WEATHER Cool

TEMP. 51°

ROUTE SR #120

COUNTY Fulton

TOWNSHIP Amboy

SECTION 8

T. \_\_\_\_\_ R. \_\_\_\_\_

TYPE MONUMENT PK Nail Set PK/WASHER

ON SURFACE - BELOW Surface 3-18-92

LEFT - ~~C~~ PAV'T. - RIGHT 1.0'

11' TO Rt EDGE PAVEMENT

S.L.M. 613+75

