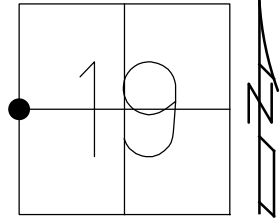


O.D.O.T. DISTRICT 2 SURVEY OFFICE (USE ONLY)

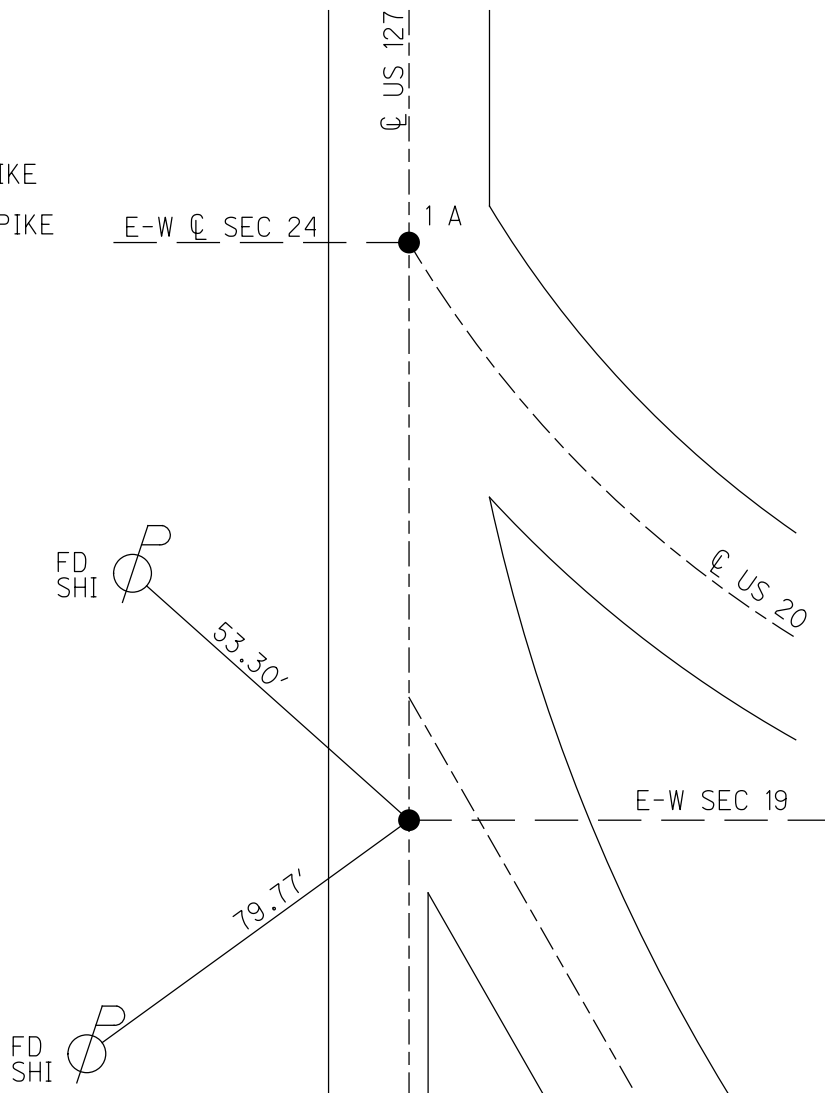
PERSONNEL \_\_\_\_\_ REFERENCE NO. 1 SHEET 1 OF 10  
 NOTES LOEHRKE DATE 5/22/97 ROUTE US 127  
 H.C. HUSS WEATHER COOL COUNTY FULTON  
 R.C. COX TEMP. 64° TOWNSHIP GORHAM  
 DWG BY NIESE PID \_\_\_\_\_ T 9 S R 1 E

TYPE MONUMENT SM.R.R.SPIKE  
 ON SURFACE - ~~BELOW~~ ON  
 OFFSET CL PAVEMENT ON LT : RT  
11.8' TO LT EDGE PAVEMENT  
 STATION: 127+90



HORIZ.DATUM: \_\_\_\_\_ GEOID: \_\_\_\_\_  
 GRID: NORTHING: \_\_\_\_\_ EASTING: \_\_\_\_\_

RECORD:  
 STA 127+46  
 FD R.R. SPIKE  
 3" DOWN  
 1985  
 FD SM R.R. SPIKE  
 5/22/97, CL  
 SET SM R.R. SPIKE  
 7/2/97, CL



O.D.O.T. DISTRICT 2 SURVEY OFFICE (USE ONLY)

PERSONNEL \_\_\_\_\_ REFERENCE NO. 1 A SHEET 2 OF 10  
 NOTES LOEHRKE DATE 5/22/97 ROUTE US 127  
 H.C. HUSS WEATHER COOL COUNTY FULTON  
 R.C. COX TEMP. 64° TOWNSHIP GORHAM  
 DWG BY NIESE PID \_\_\_\_\_ SECTION 19  
 T 9 S R 1 E

TYPE MONUMENT SM.R.R.SPIKE

ON SURFACE - ~~BELOW~~ ON

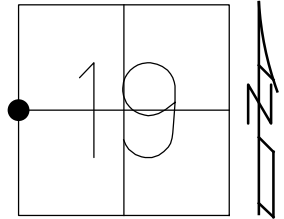
OFFSET  $\varnothing$  PAVEMENT ON LT : RT

11.8' TO LT EDGE PAVEMENT

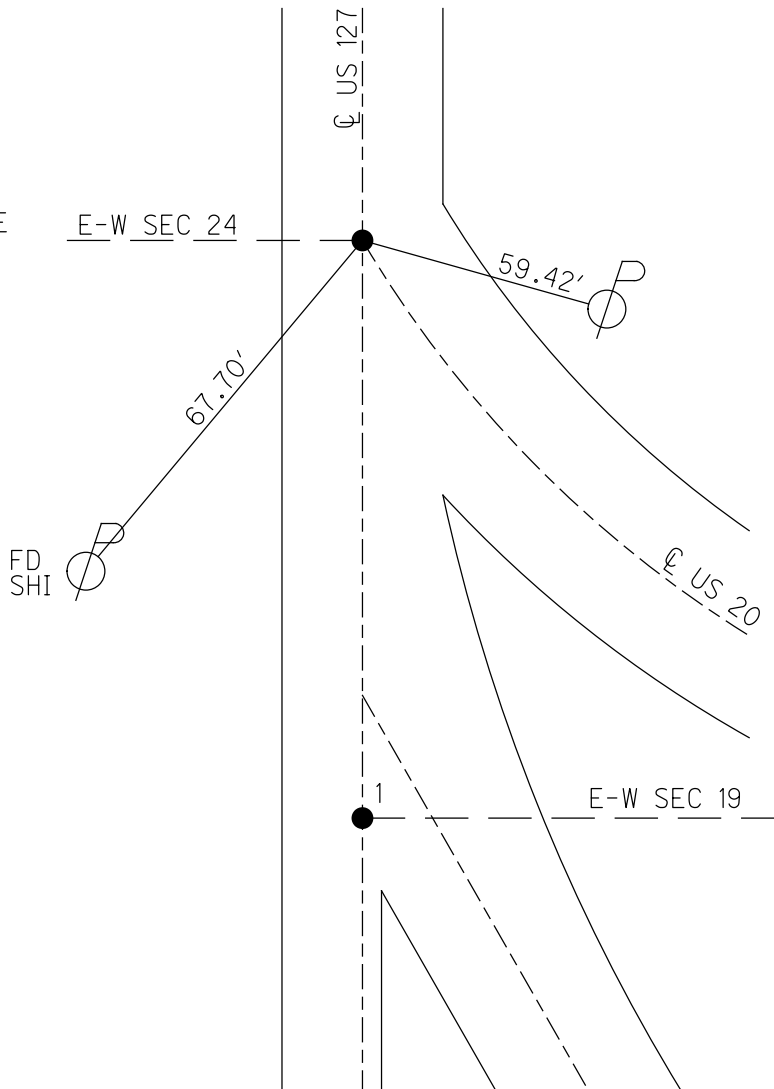
STATION: 128+86

HORZ.DATUM: \_\_\_\_\_ GEOID: \_\_\_\_\_

GRID: NORTHING: \_\_\_\_\_ EASTING: \_\_\_\_\_



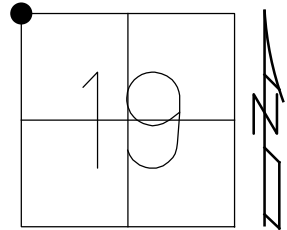
RECORD:  
 STA 128+41  
 FD R.R. SPIKE  
 3" DOWN  
 1985  
 FD SM R.R. SPIKE  
 5/22/97, CL  
 SET SM R.R. SPIKE  
 7/2/97, CL



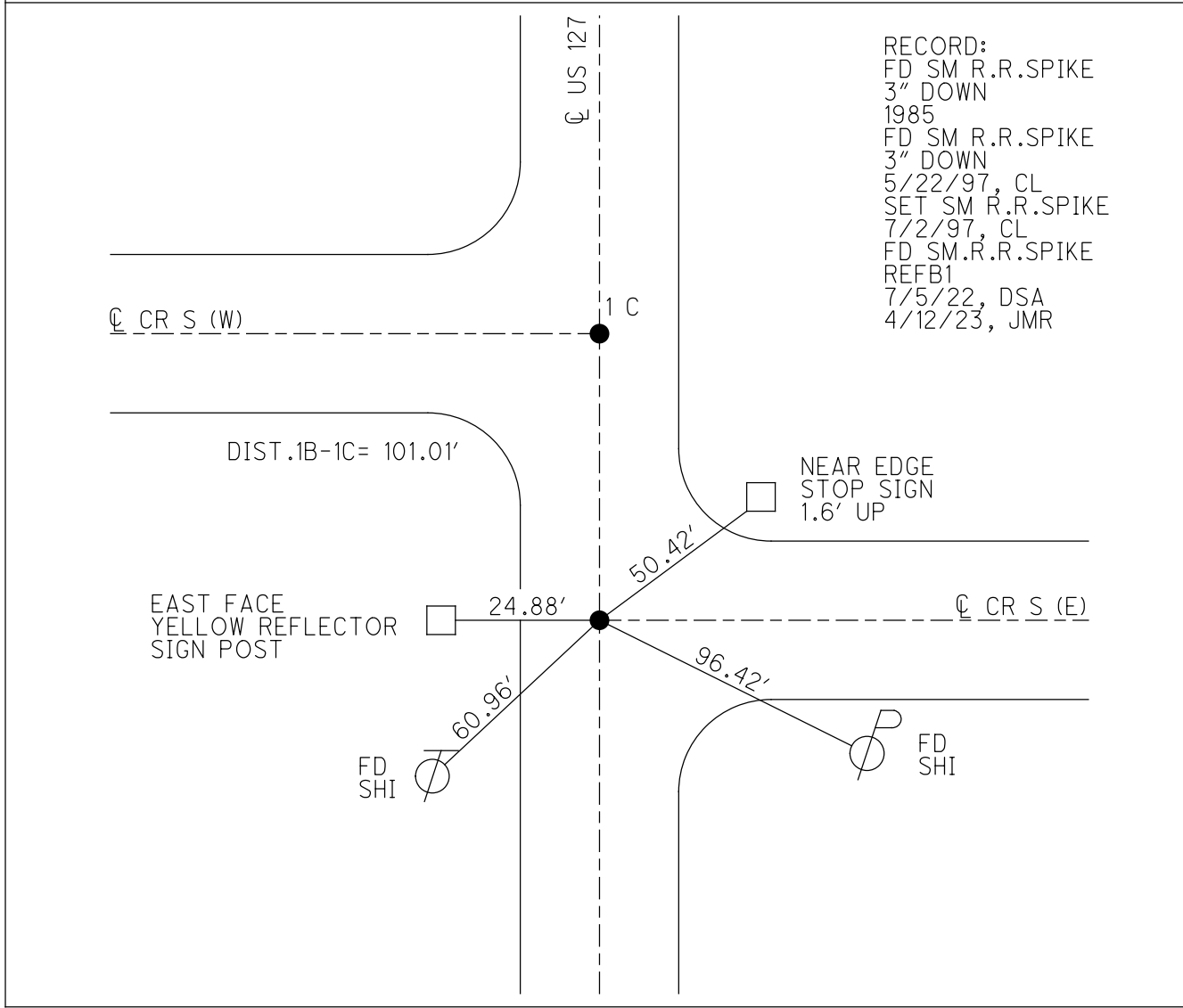
O.D.O.T. DISTRICT 2 SURVEY OFFICE (USE ONLY)

PERSONNEL \_\_\_\_\_ REFERENCE NO. 1 B SHEET 3 OF 10  
 NOTES LOEHRKE DATE 5/22/97 ROUTE US 127  
 H.C. HUSS WEATHER FAIR COUNTY FULTON  
 R.C. COX TEMP. 60° TOWNSHIP GORHAM  
 DWG BY RHOADES PID PAVETRAIN SECTION 19  
 T 9 S R 1 E

TYPE MONUMENT SM.R.R.SPIKE  
~~ON SURFACE~~ - BELOW 3"  
 OFFSET  $\bar{C}$  PAVEMENT 0.2'  $\bar{L}$  : RT  
12.1' TO RT EDGE PAVEMENT  
 STATION: 154+46



HORIZ.DATUM: NAD83 2011 GEOID: NAVD88 2018  
 GRID: NORTHING: 739151.660 EASTING: 1460360.723



O.D.O.T. DISTRICT 2 SURVEY OFFICE (USE ONLY)

PERSONNEL

REFERENCE NO. 1 C

SHEET 4 OF 10

NOTES LOEHRKE

DATE 5/22/97

ROUTE US 127

H.C. HUSS

WEATHER FAIR

COUNTY FULTON

R.C. COX

TEMP. 60°

TOWNSHIP GORHAM

SECTION 19

DWG BY RHOADES

PID PAVETRAIN

T 9 S R 1 E

TYPE MONUMENT SM.R.R.SPIKE

~~ON SURFACE~~ - BELOW 3"

OFFSET  $\bar{C}$  PAVEMENT 0.2'  $\bar{L}$  : RT

12.1' TO RT EDGE PAVEMENT

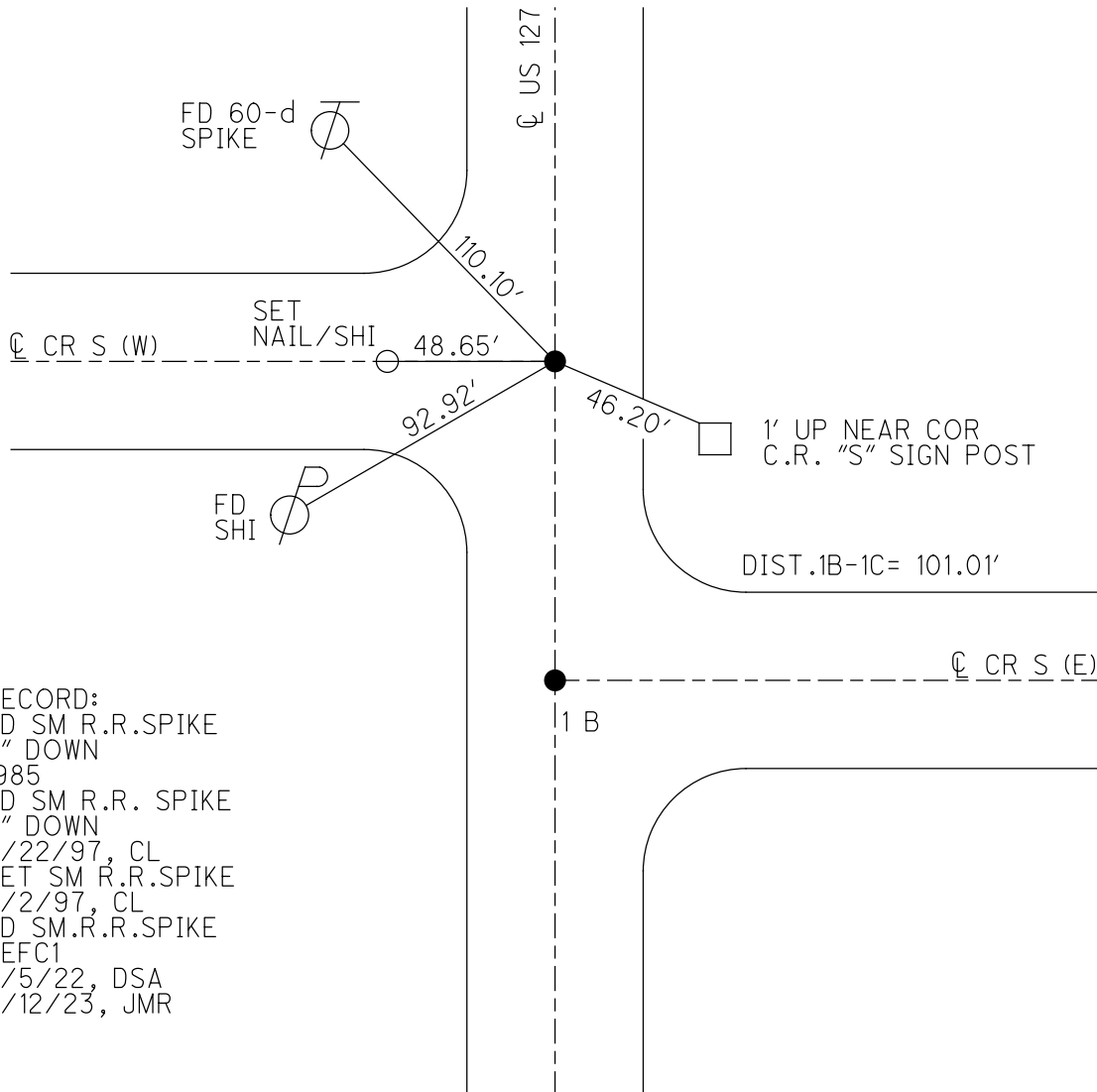
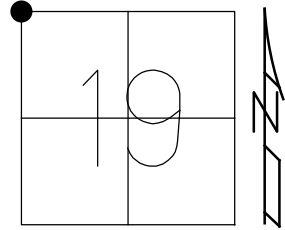
STATION: 155+46.5

HORZ.DATUM: NAD83 2011

GEOID: NAVD88 2018

GRID: NORTHING: 739252.570

EASTING: 1460363.056

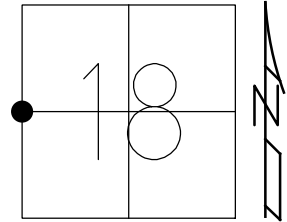


RECORD:  
 FD SM R.R.SPIKE  
 3" DOWN  
 1985  
 FD SM R.R. SPIKE  
 3" DOWN  
 5/22/97, CL  
 SET SM R.R.SPIKE  
 7/2/97, CL  
 FD SM.R.R.SPIKE  
 REFC1  
 7/5/22, DSA  
 4/12/23, JMR

O.D.O.T. DISTRICT 2 SURVEY OFFICE (USE ONLY)

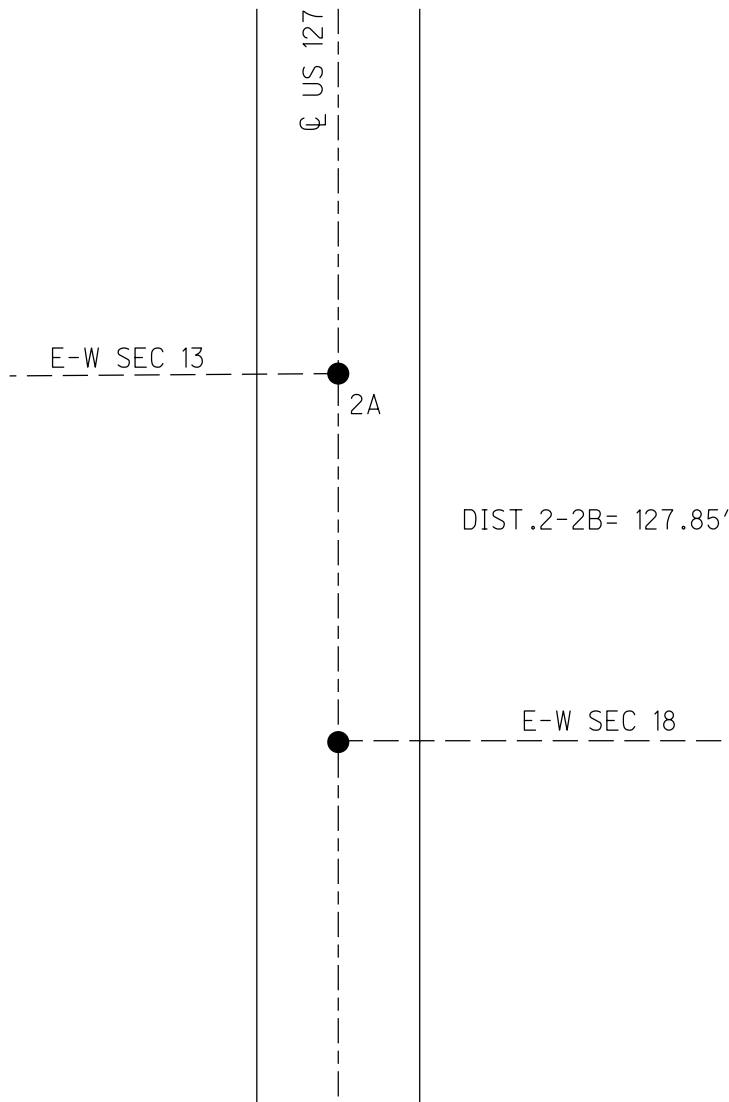
PERSONNEL \_\_\_\_\_ REFERENCE NO. 2 SHEET 5 OF 10  
 NOTES LOEHRKE DATE 5/22/97 ROUTE US 127  
 H.C. HUSS WEATHER NICE COUNTY FULTON  
 R.C. COX TEMP. 62° TOWNSHIP GORHAM  
 DWG BY RHOADES PID PAVETRAIN SECTION 18  
 T 9 N R 1 E

TYPE MONUMENT SM.R.R. SPIKE  
~~ON SURFACE~~ - BELOW 2"  
 OFFSET 11.5' 11.5' RT PAVEMENT 0.8' RT : RT  
 TO RT EDGE PAVEMENT  
 STATION: 180+69



HORZ.DATUM: NAD83 2011 GEOID: NAVD88 2018  
 GRID: NORTHING: 741765.422 EASTING: 1460404.740

RECORD:  
 STA 180+08  
 FD SM R.R.SPIKE  
 3" DOWN  
 1985  
 FD SM R.R.SPIKE  
 2" DOWN  
 5/22/97, CL  
 SET SM R.R.SPIKE  
 7/2/97, CL  
 FD SM.R.R.SPIKE  
 REF2  
 7/5/22, DSA  
 4/12/23, JMR



O.D.O.T. DISTRICT 2 SURVEY OFFICE (USE ONLY)

PERSONNEL

REFERENCE NO. 2 A

SHEET 6 OF 10

NOTES LOEHRKE

DATE 5/22/97

ROUTE US 127

H.C. HUSS

WEATHER NICE

COUNTY FULTON

R.C. COX

TEMP. 62°

TOWNSHIP GORHAM

SECTION 18

DWG BY RHOADES PID PAVETRAIN

T 9 N R 1 E

TYPE MONUMENT SM.R.R.SPIKE

~~ON SURFACE~~ - BELOW 2"

OFFSET  $\varnothing$  PAVEMENT 0.8'  $\pm$  : RT

11.5' TO RT EDGE PAVEMENT

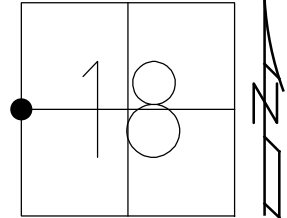
STATION: 181+97

HORZ.DATUM: NAD83 2011

GEOID: NAVD88 2018

GRID: NORTHING: 741893.182

EASTING: 1460406.174



RECORD:  
 STA 181+36  
 FD SM R.R.SPIKE  
 3" DOWN  
 1985  
 FD SM R.R.SPIKE  
 2" DOWN  
 5/22/97, CL  
 SET SM R.R.SPIKE  
 7/2/97, CL  
 FD SM.R.R.SPIKE  
 REFA2  
 7/5/22, DSA  
 4/12/23, JMR

E-W SEC 13

US 127

DIST .2-2B= 127.85'

E-W SEC 18

2

O.D.O.T. DISTRICT 2 SURVEY OFFICE (USE ONLY)

PERSONNEL

REFERENCE NO. 3

SHEET 7 OF 10

NOTES LOEHRKE

DATE 5/22/97

ROUTE US 127

H.C. HUSS

WEATHER NICE

COUNTY FULTON

R.C. COX

TEMP. 62°

TOWNSHIP GORHAM

SECTION 18

DWG BY RHOADES

PID PAVETRAIN

T 9 N R 1 E

TYPE MONUMENT SM.R.R.SPIKE

~~ON SURFACE~~ - BELOW 2"

OFFSET  $\text{\textcircled{C}}$  PAVEMENT 1.0' LT : ~~RT~~

11.2' TO LT EDGE PAVEMENT

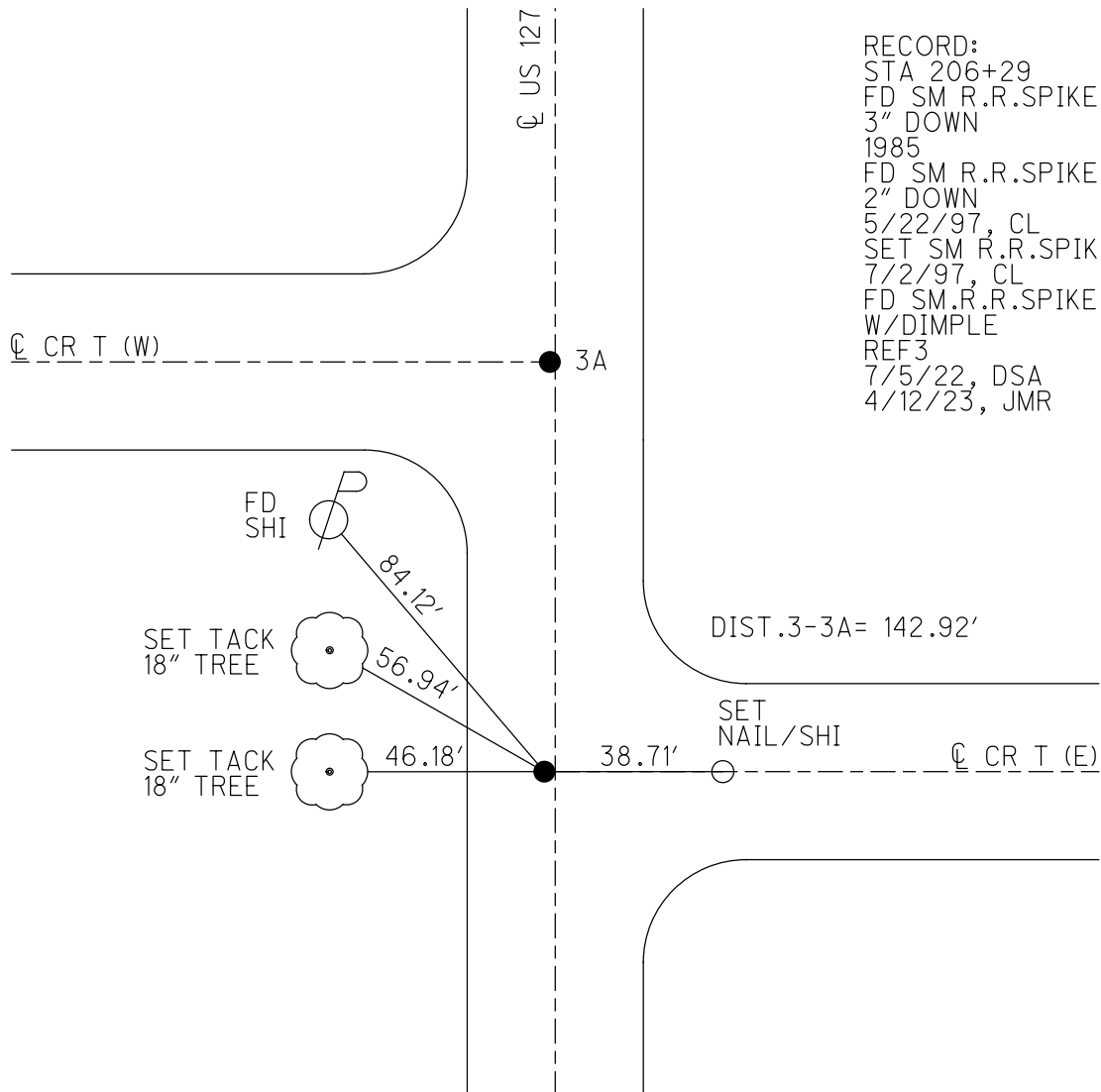
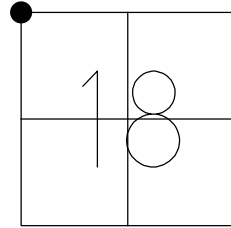
STATION: 207+00

HORZ.DATUM: NAD83 2011

GEOID: NAVD88 2018

GRID: NORTHING: 744385.951

EASTING: 1460443.945



RECORD:  
 STA 206+29  
 FD SM R.R.SPIKE  
 3" DOWN  
 1985  
 FD SM R.R.SPIKE  
 2" DOWN  
 5/22/97, CL  
 SET SM R.R.SPIKE  
 7/2/97, CL  
 FD SM R.R.SPIKE  
 W/DIMPLE  
 REF3  
 7/5/22, DSA  
 4/12/23, JMR

DIST.3-3A= 142.92'

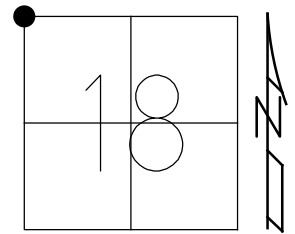
SET  
 NAIL/SHI

$\text{\textcircled{C}}$  CR T (E)

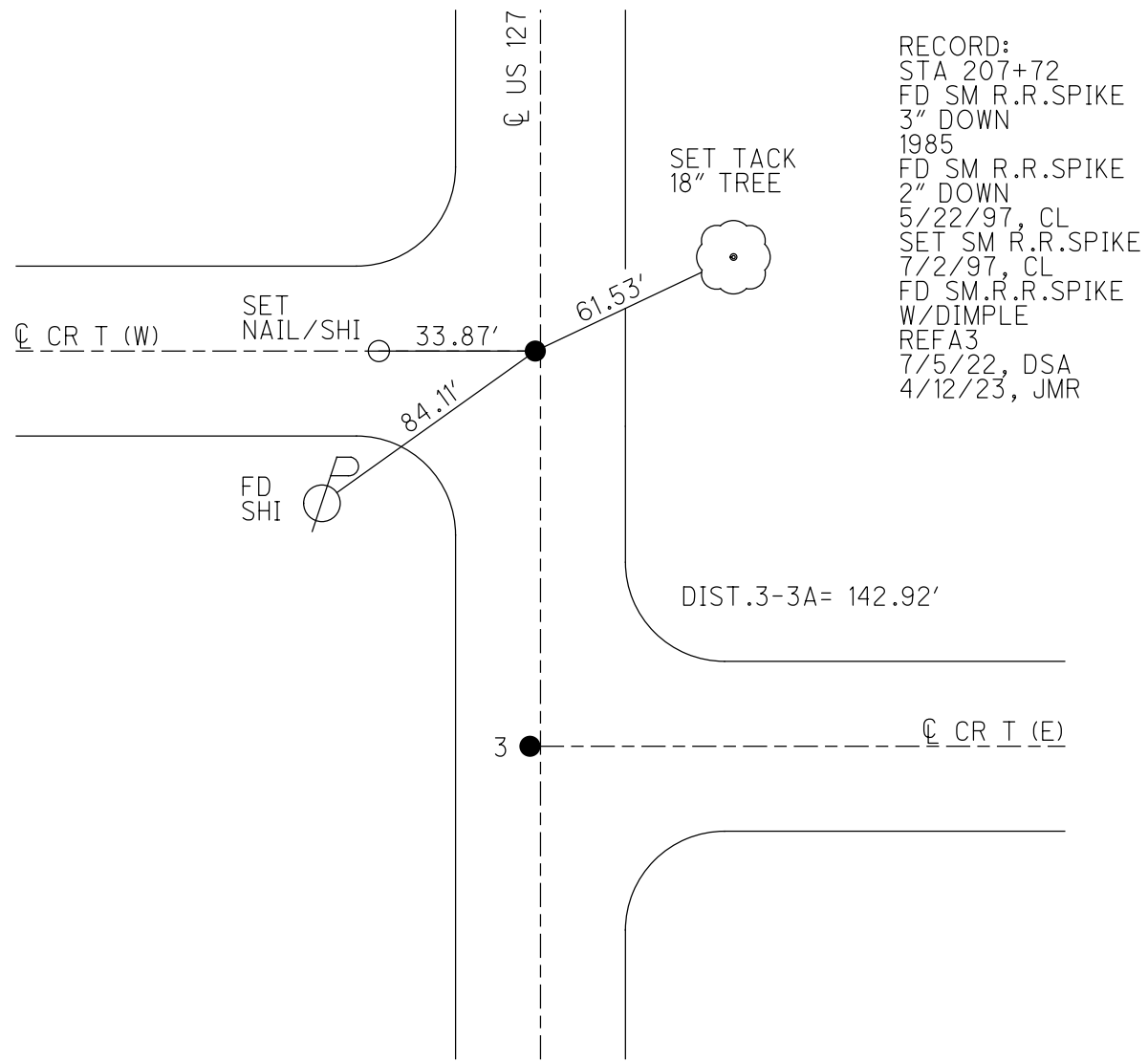
O.D.O.T. DISTRICT 2 SURVEY OFFICE (USE ONLY)

PERSONNEL \_\_\_\_\_ REFERENCE NO. 3 A SHEET 8 OF 10  
 NOTES LOEHRKE DATE 5/22/97 ROUTE US 127  
 H.C. HUSS WEATHER NICE COUNTY FULTON  
 R.C. COX TEMP. 62° TOWNSHIP GORHAM  
 DWG BY RHOADES PID PAVETRAIN SECTION 18  
 T 9 N R 1 E

TYPE MONUMENT SM.R.R.SPIKE  
~~ON SURFACE~~ - BELOW 2"  
 OFFSET  $\phi$  PAVEMENT 0.7' LT : ~~RT~~  
12.7' TO RT EDGE PAVEMENT  
 STATION: 208+43



HORZ.DATUM: NAD83 2011 GEOID: NAVD88 2018  
 GRID: NORTHING: 744528.801 EASTING: 1460446.851



RECORD:  
 STA 207+72  
 FD SM R.R.SPIKE  
 3" DOWN  
 1985  
 FD SM R.R.SPIKE  
 2" DOWN  
 5/22/97, CL  
 SET SM R.R.SPIKE  
 7/2/97, CL  
 FD SM.R.R.SPIKE  
 W/DIMPLE  
 REFA3  
 7/5/22, DSA  
 4/12/23, JMR

DIST.3-3A= 142.92'

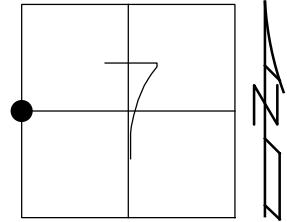
3  $\phi$  CR T (E)



O.D.O.T. DISTRICT 2 SURVEY OFFICE (USE ONLY)

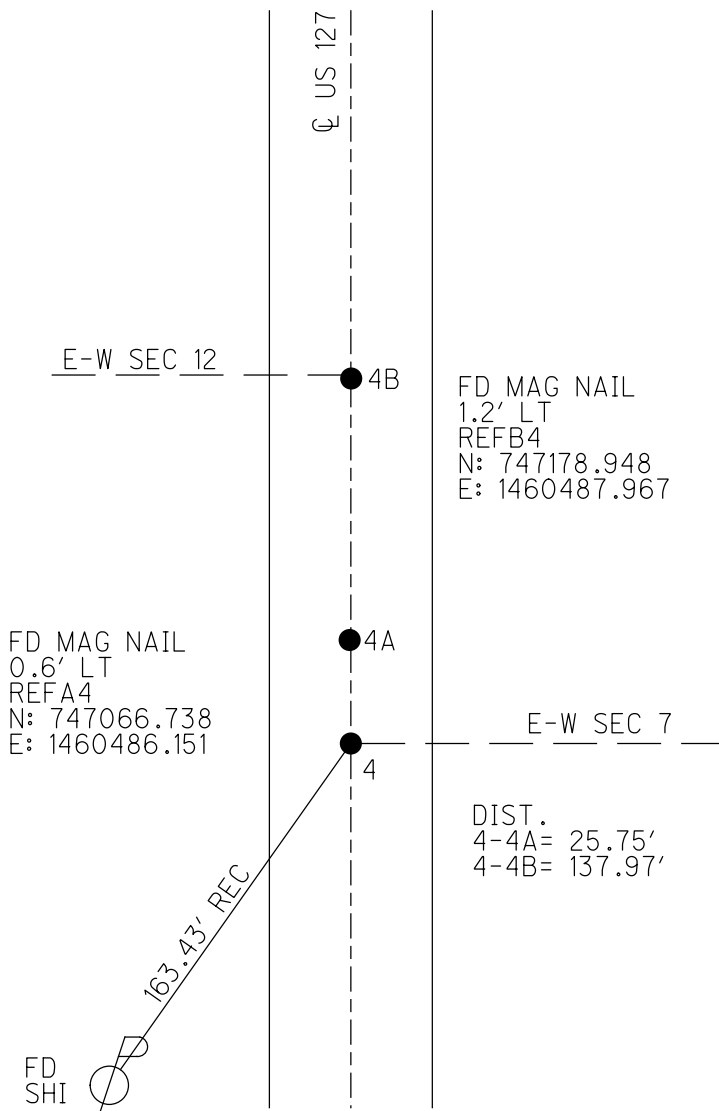
PERSONNEL \_\_\_\_\_ REFERENCE NO. 4 SHEET 9 OF 10  
 NOTES LOEHRKE DATE 5/22/97 ROUTE US 127  
 H.C. HUSS WEATHER COOL COUNTY FULTON  
 R.C. COX TEMP. 64° TOWNSHIP GORHAM  
 DWG BY RHOADES PID PAVETRAIN SECTION 7  
 T 9 N R 1 E

TYPE MONUMENT SM.R.R.SPIKE  
 ON SURFACE - ~~BELOW~~ ON  
 OFFSET ☐ PAVEMENT 0.2' LT : ~~RT~~  
12.5' TO LT EDGE PAVEMENT  
 STATION: 233+69



HORIZ.DATUM: NAD83 2011 GEOID: NAVD88 2018  
 GRID: NORTHING: 747040.997 EASTING: 1460485.776

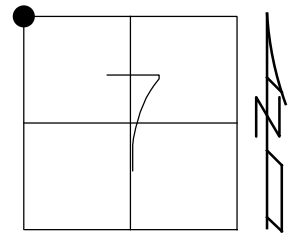
RECORD:  
 STA 232+84  
 D.N.F  
 1985, IRS  
 FD SM.R.R.SPIKE  
 3" DOWN  
 1985  
 FD SM R.R. SPIKE  
 5/22/97, CL  
 FD SM.R.R.SPIKE  
 REF4  
 7/5/22, DSA  
 4/12/23, JMR



O.D.O.T. DISTRICT 2 SURVEY OFFICE (USE ONLY)

PERSONNEL \_\_\_\_\_ REFERENCE NO. 5 SHEET 10 OF 10  
 NOTES LOEHRKE DATE 5/22/97 ROUTE US 127  
 H.C. HUSS WEATHER COOL COUNTY FULTON  
 R.C. COX TEMP. 64° TOWNSHIP GORHAM  
 DWG BY RHOADES PID PAVETRAIN SECTION 7  
 T 9 N R 1 E

TYPE MONUMENT R.R. SPIKE  
~~ON SURFACE~~ - BELOW 1"  
 OFFSET  $\oslash$  PAVEMENT ON LT : RT  
11.3' TO LT EDGE PAVEMENT  
 STATION: 249+75



HORZ.DATUM: NAD83 2011 GEOID: NAVD88 2018  
 GRID: NORTHING: 748640.779 EASTING: 1460523.864

RECORD:  
 STA 248+85  
 FD SM R.R.SPIKE  
 3" DOWN  
 1985  
 FD SM R.R.SPIKE  
 1" DOWN  
 5/22/97, CL  
 FD MAG NAIL  
 REF5  
 7/5/22, DSA  
 4/12/23, JMR

