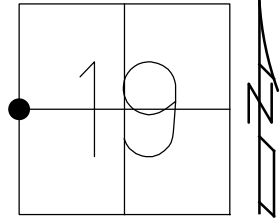


O.D.O.T. DISTRICT 2 SURVEY OFFICE (USE ONLY)

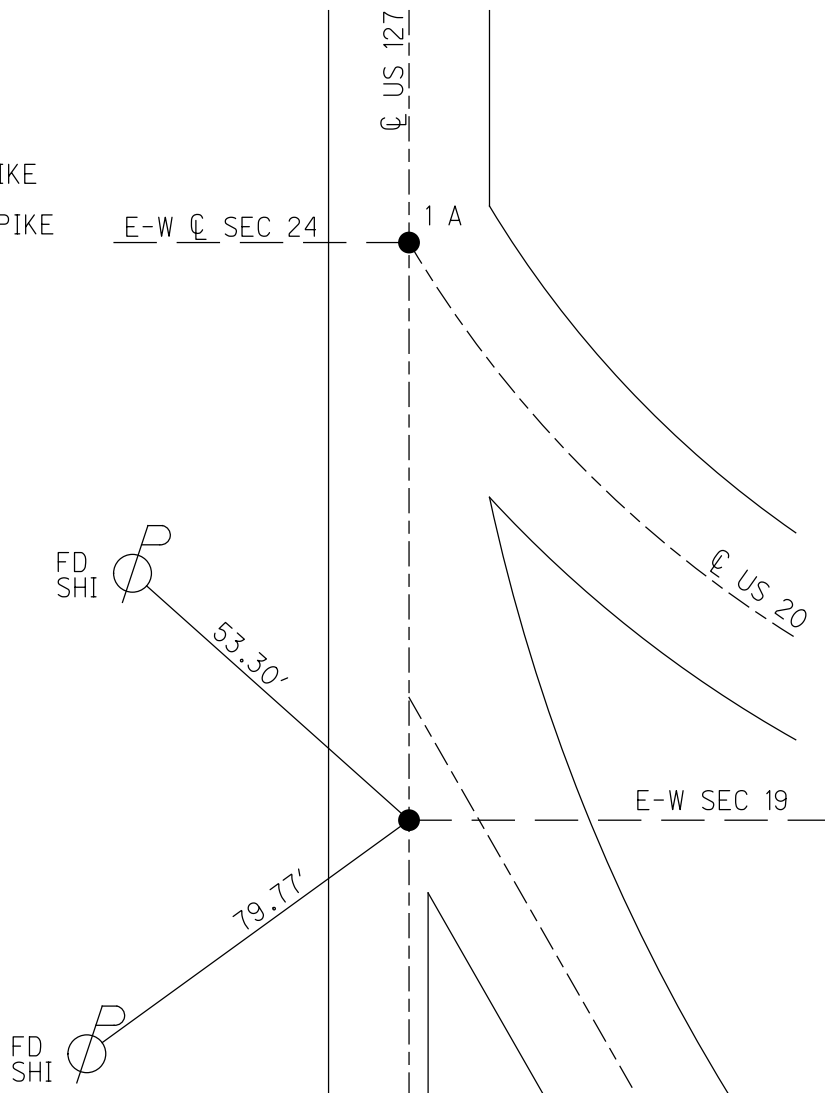
PERSONNEL \_\_\_\_\_ REFERENCE NO. 1 SHEET 1 OF 10  
 NOTES LOEHRKE DATE 5/22/97 ROUTE US 127  
 H.C. HUSS WEATHER COOL COUNTY FULTON  
 R.C. COX TEMP. 64° TOWNSHIP GORHAM  
 DWG BY NIESE PID \_\_\_\_\_ T 9 S R 1 E

TYPE MONUMENT SM.R.R.SPIKE  
 ON SURFACE - ~~BELOW~~ ON  
 OFFSET CL PAVEMENT ON LT : RT  
11.8' TO LT EDGE PAVEMENT  
 STATION: 127+90



HORZ.DATUM: \_\_\_\_\_ GEOID: \_\_\_\_\_  
 GRID: NORTHING: \_\_\_\_\_ EASTING: \_\_\_\_\_

RECORD:  
 STA 127+46  
 FD R.R. SPIKE  
 3" DOWN  
 1985  
 FD SM R.R. SPIKE  
 5/22/97, CL  
 SET SM R.R. SPIKE  
 7/2/97, CL



# O.D.O.T. DISTRICT 2 SURVEY OFFICE

PERSONNEL \_\_\_\_\_

REFERENCE NO. 1

SHEET 1 OF 6

NOTES: C. Loerkhe

H.C. S. HULLS

R.C. C. COX

DATE 5-22-97

WEATHER COOL

TEMP. 64°

ROUTE U.S. #127

COUNTY FULTON

TOWNSHIP GORHAM

SECTION 19-24

T 9 S R 1 W / 1 E

TYPE MONUMENT SMALL R.R. SPKS

ON SURFACE - BELOW SURFACE

LEFT - ☉ PAV'T. - RIGHT ☉

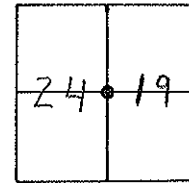
11.8 TO LT. EDGE PAVEMENT

S.L.M. 127+90 & 128+86

set Sm RR spks

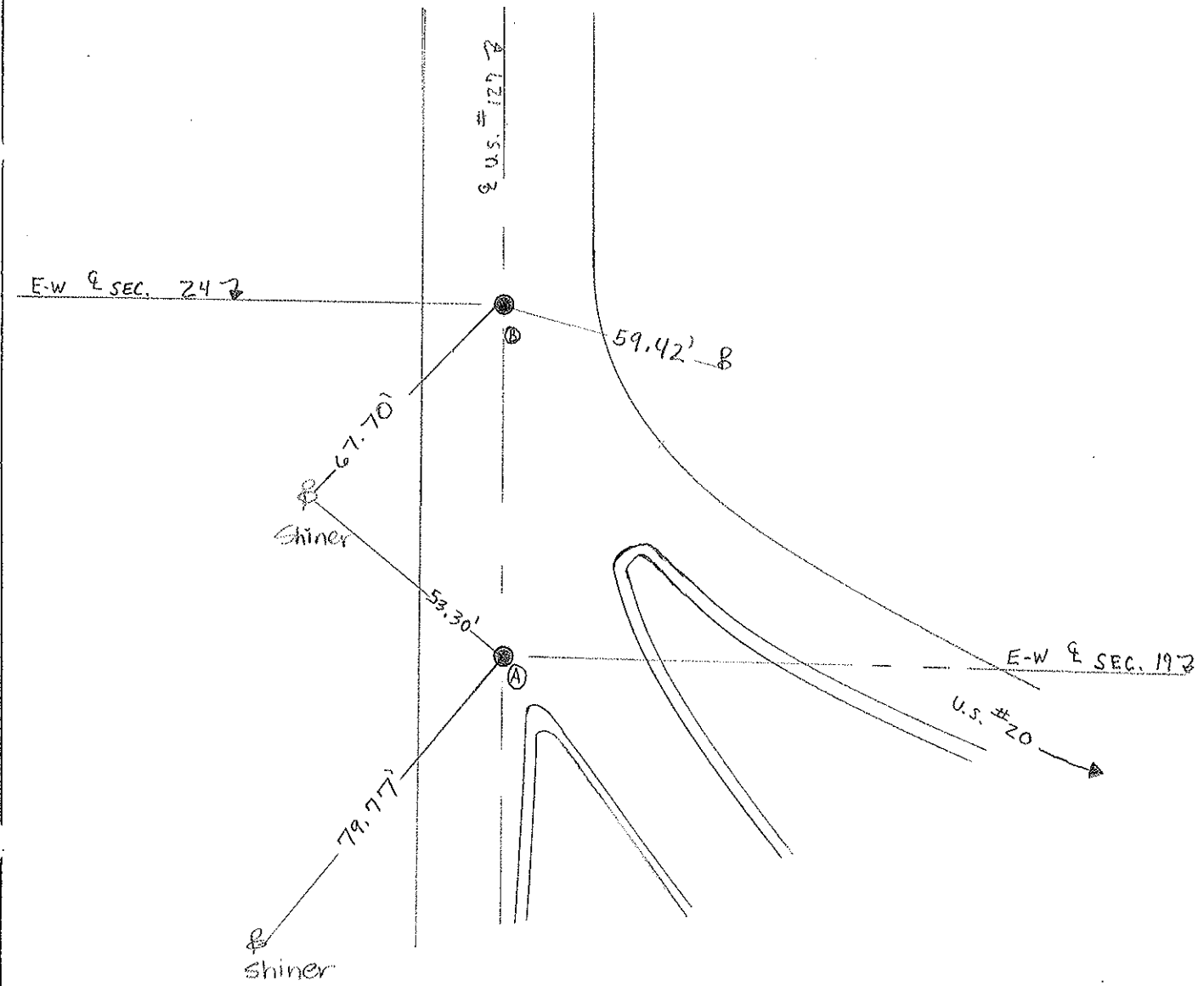
7-2-97

C.L.



RECORD: A= 127+46, B= 128+41

FD. RR. SPKS 3' Deep - 1985



O.D.O.T. DISTRICT 2 SURVEY OFFICE

PERSONNEL

REFERENCE NO. 1

SHEET 1 OF     

NOTES 1. Stone

H.C. D. Curtis

DATE 2 Oct. 85

ROUTE US # 127

R.C. R. Michalek

WEATHER Cool

COUNTY Fulton

J. House holder

TEMP. 52°

TOWNSHIP Graham

SECTION 19-24

T      R     

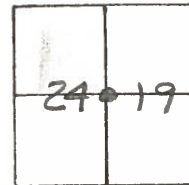
TYPE MONUMENT RR Spks.

ON SURFACE - BELOW Surface

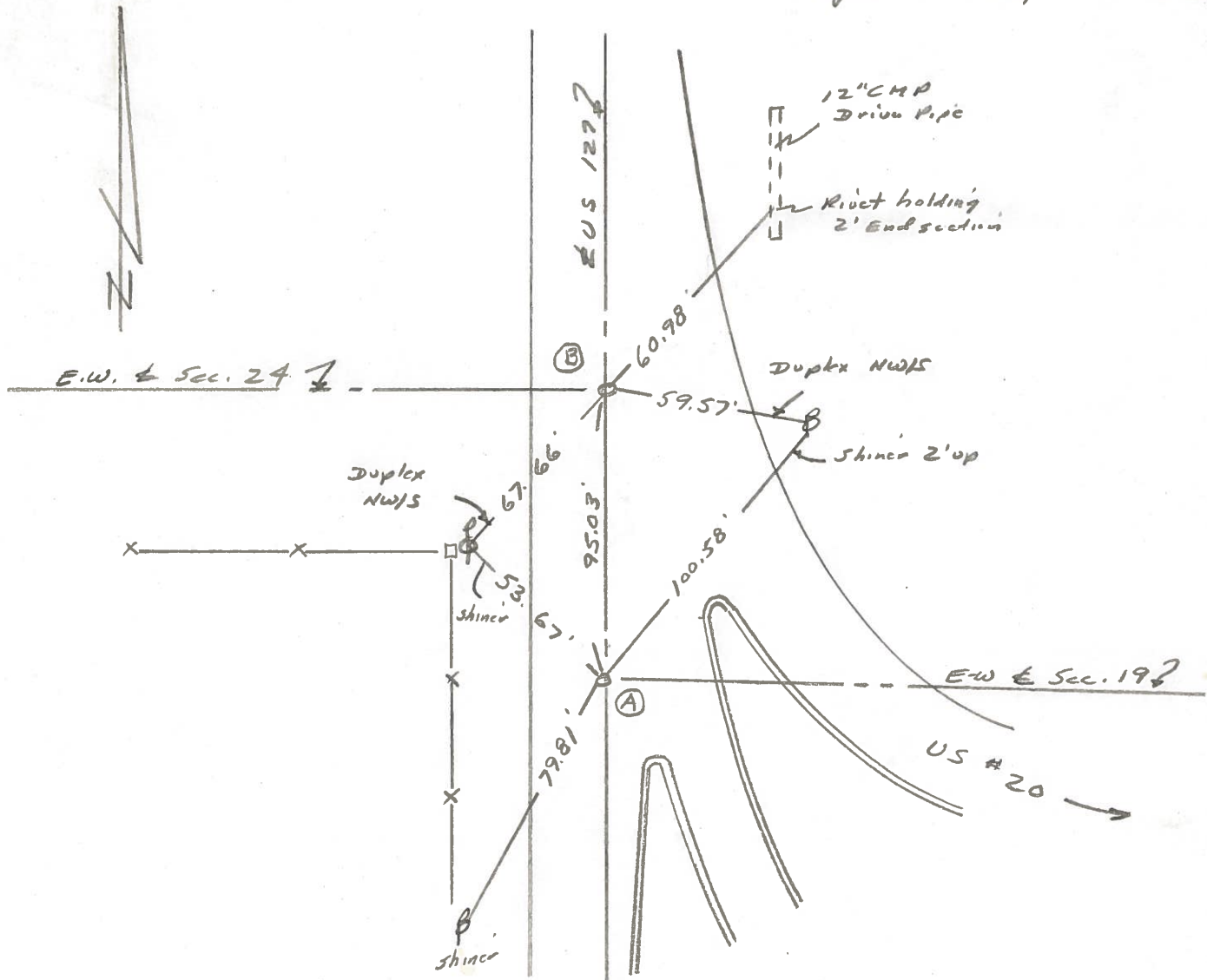
LEFT - & PAW'T. - RIGHT     

     TO      EDGE PAVEMENT

S.L.M. (A) = 127+46, (B) = 128+41



Fd. R.R. Spks 3" Deep - 12-13-85



County Fulton US # 127

Date 26 June 1979

Township Gocham

Weather Fair

Section 19

Temp. 72°

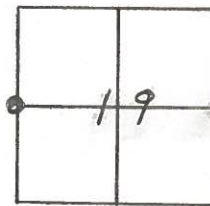
T. N. R. E

Personnel 1. Stone

R. Michalak

D. Curtis

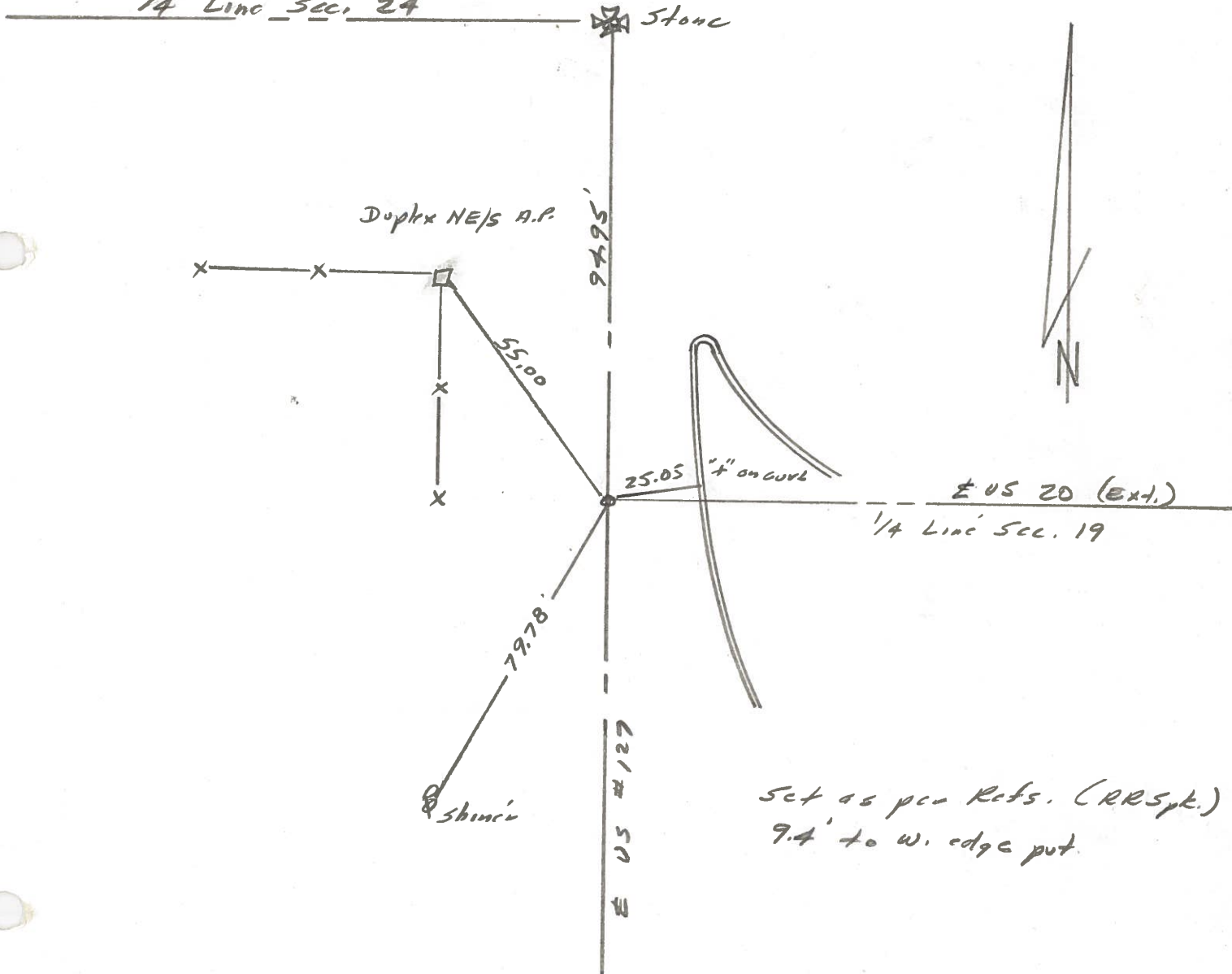
D. Branafe



REF. NO. 7  
J.S. 20 7A 127 1

SLM BLETOP STA. 125+18

1/4 Line Sec. 24



Set as per Refs. (RRSpt.)  
9.4' to W. edge put.

County Fulton US #127

Date 26 June 1979

Township Gorham

Weather Fair

Section 24

Temp. 74°

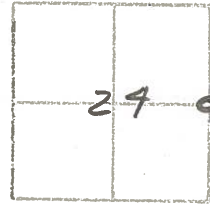
T N, R E

Personnel 1. Stone

D. Michalak

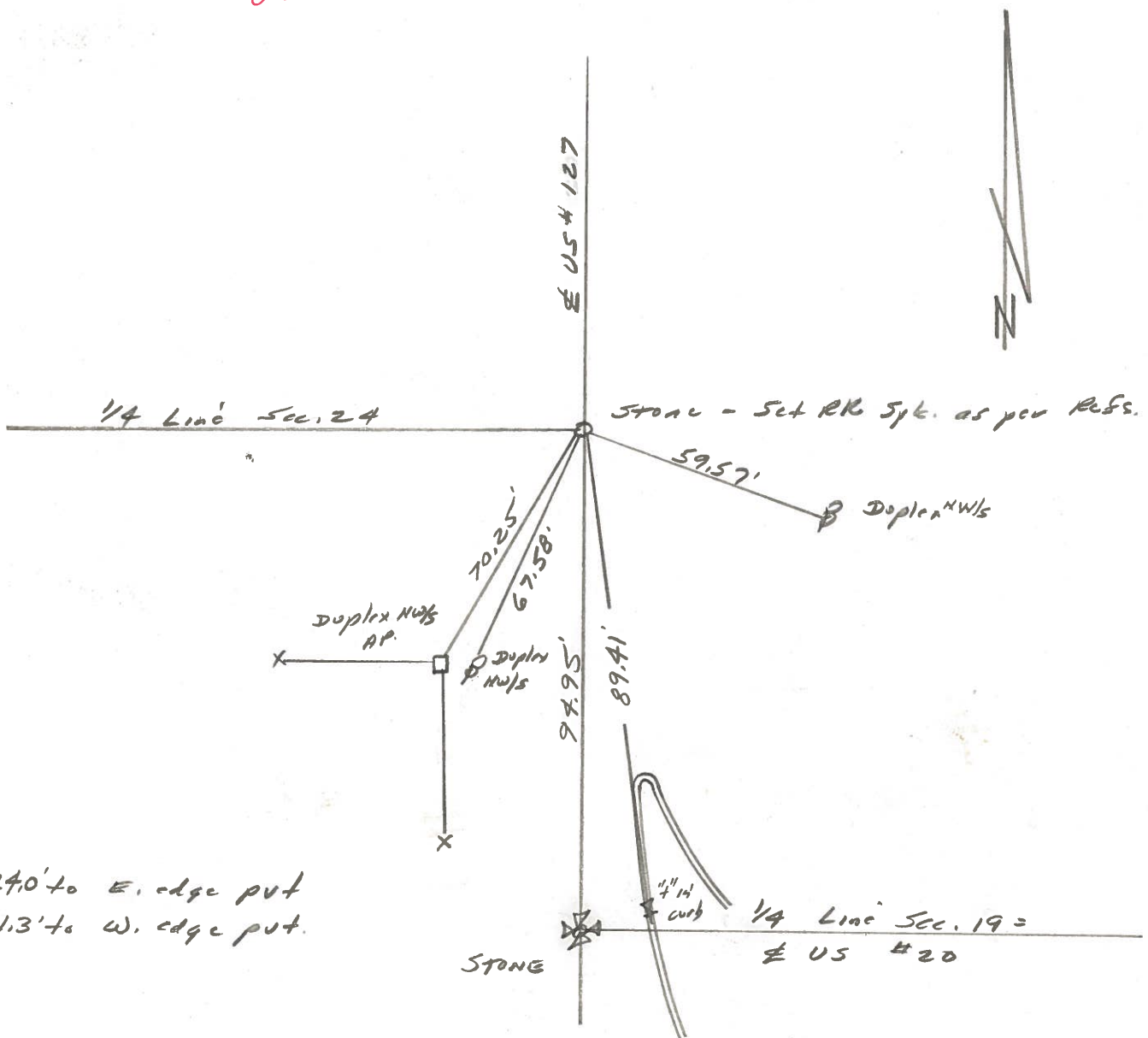
D. Curtis

D. Granta



REF. No. 7 <sup>T-A</sup> 127  
U.S. 20

SUM CURTOP STA. 126+12



PERSONNEL TITLE PERSONNEL TITLE

Red Beach

COUNTY Fulton

DATE 5 Aug 1974

W. Knappe

S. R. US 127

WEATHER \_\_\_\_\_

D. Boyle

SEC 19 & 24 Gorham

TEMP \_\_\_\_\_

J. Bagdonas

DESCRIPTION CONTROL POINTS

JOB NO. \_\_\_\_\_

See Vol. 60 p. 364 & 372 (1891)  
Co. Recorder's office



ER RW Line

Dup. N/S 3 1/2" sign post

48.65'

R-1-N  
R-1-E

50'  
Record

Found E. Wyrick's MSS  
Vol. "F" p. 244 (1969)

RR RW

49.00'

qtr. line, Sec. 24

Found qtr. stone 31" below  
part. surface 5 Aug 74  
Qtr. Stone has good  
E-W Ridge. Found  
approx. a 2gt. stone on  
top of the qtr. stone.

Est. 20"x1" pipe  
over the qtr. stone  
qtr. stone is 11.0' east  
of the west edge of the  
33.4' wide pavt.

Dup NW/S

Found E. Wyrick's MSS  
Vol. "F" p. 244 (1969)

Dup NW/S AP  
ER RW fence

Dup NW/S  
Dup. NE/S AP

70.09'

67.58'

56.5'

94.95'

2650.01'

US 127

89.41'

"+" on 2' Radius Curve

35.2'

85.85'

Found "+" on curb

25.05'

80'  
Record

US 207  
qtr. line, Sec. 19

Found Sec. 19 qtr. stone  
6 June '74

East Line of Sec. 24

1.84'  
overlap

South 1/4 post, Sec. 24

90° 45.0'

US 207

sec. 24  
CORNER

Found cor. stone 31 May '74

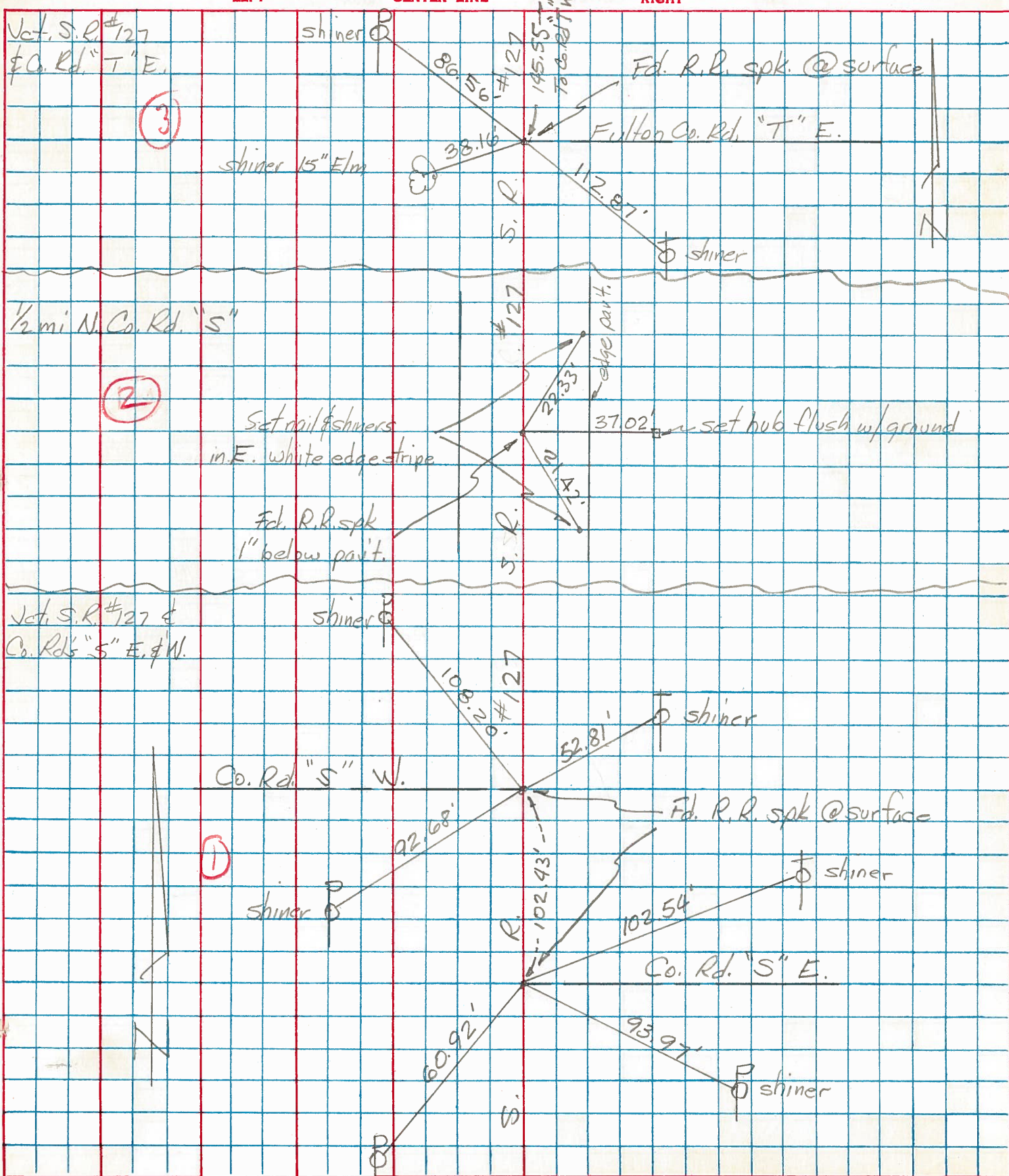
PERSONNEL	TITLE	PERSONNEL	TITLE
Tomsic			
Granata			
Vanyo			
Boyle			

COUNTY Fulton DATE Aug, 27, 1973

S. R. 127 WEATHER \_\_\_\_\_

SEC. \_\_\_\_\_ TEMP. \_\_\_\_\_

DESCRIPTION \_\_\_\_\_ LEFT \_\_\_\_\_ CENTER LINE \_\_\_\_\_ RIGHT \_\_\_\_\_ JOB NO. \_\_\_\_\_



PERSONNEL	TITLE	PERSONNEL	TITLE	COUNTY	DATE	S. R.	WEATHER	TEMP.
Bunnside				Fulton	8-20-65	#127	Clear	+75°
Smith								
Katcham								

DESCRIPTION	LEFT	CENTER LINE	RIGHT	JOB NO.
-------------	------	-------------	-------	---------

