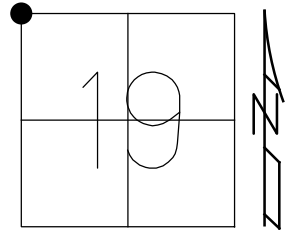


O.D.O.T. DISTRICT 2 SURVEY OFFICE (USE ONLY)

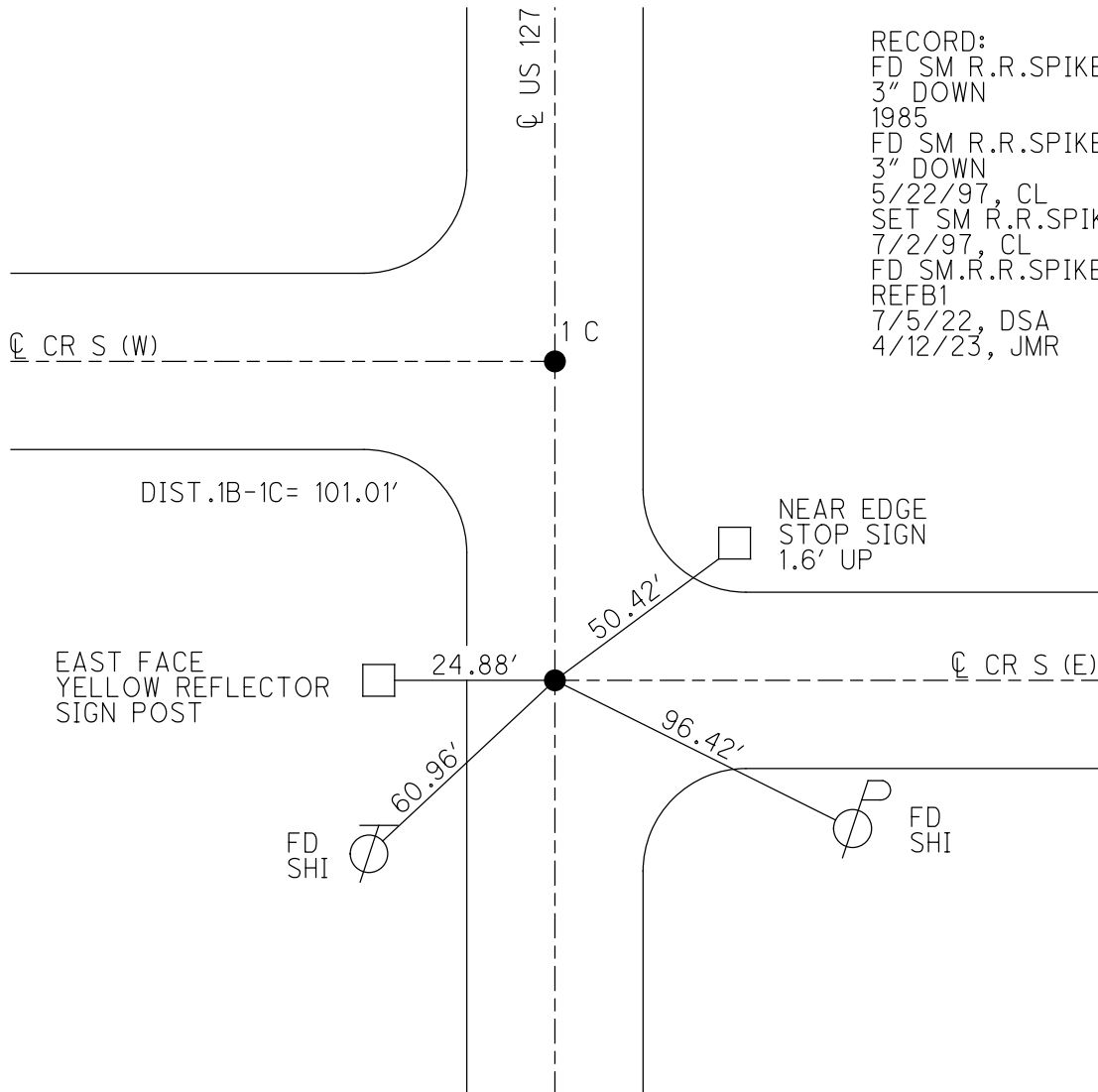
PERSONNEL \_\_\_\_\_ REFERENCE NO. 1 B SHEET 3 OF 10  
 NOTES LOEHRKE DATE 5/22/97 ROUTE US 127  
 H.C. HUSS WEATHER FAIR COUNTY FULTON  
 R.C. COX TEMP. 60° TOWNSHIP GORHAM  
 DWG BY RHOADES PID PAVETRAIN SECTION 19  
 T 9 S R 1 E

TYPE MONUMENT SM.R.R.SPIKE  
~~ON SURFACE~~ - BELOW 3"  
 OFFSET  $\bar{C}$  PAVEMENT 0.2'  $\bar{L}$  : RT  
12.1' TO RT EDGE PAVEMENT  
 STATION: 154+46

HORIZ.DATUM: NAD83 2011 GEOID: NAVD88 2018  
 GRID: NORTHING: 739151.660 EASTING: 1460360.723



RECORD:  
 FD SM R.R.SPIKE  
 3" DOWN  
 1985  
 FD SM R.R.SPIKE  
 3" DOWN  
 5/22/97, CL  
 SET SM R.R.SPIKE  
 7/2/97, CL  
 FD SM.R.R.SPIKE  
 REFB1  
 7/5/22, DSA  
 4/12/23, JMR



O.D.O.T. DISTRICT 2 SURVEY OFFICE (USE ONLY)

PERSONNEL \_\_\_\_\_

REFERENCE NO. 1 B

SHEET 3 OF 10

NOTES LOEHRKE

DATE 5/22/97

ROUTE US 127

H.C. HUSS

WEATHER FAIR

COUNTY FULTON

R.C. COX

TEMP. 60°

TOWNSHIP GORHAM

SECTION 19

DWG BY NIESE PID \_\_\_\_\_

T 9 S R 1 E

TYPE MONUMENT SM.R.R.SPIKE

~~ON SURFACE~~ - BELOW 3"

OFFSET  $\odot$  PAVEMENT 0.2' ~~LT~~ : RT

12.1' TO RT EDGE PAVEMENT

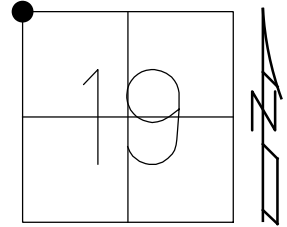
STATION: 154+46

HORZ.DATUM: \_\_\_\_\_

GEOID: \_\_\_\_\_

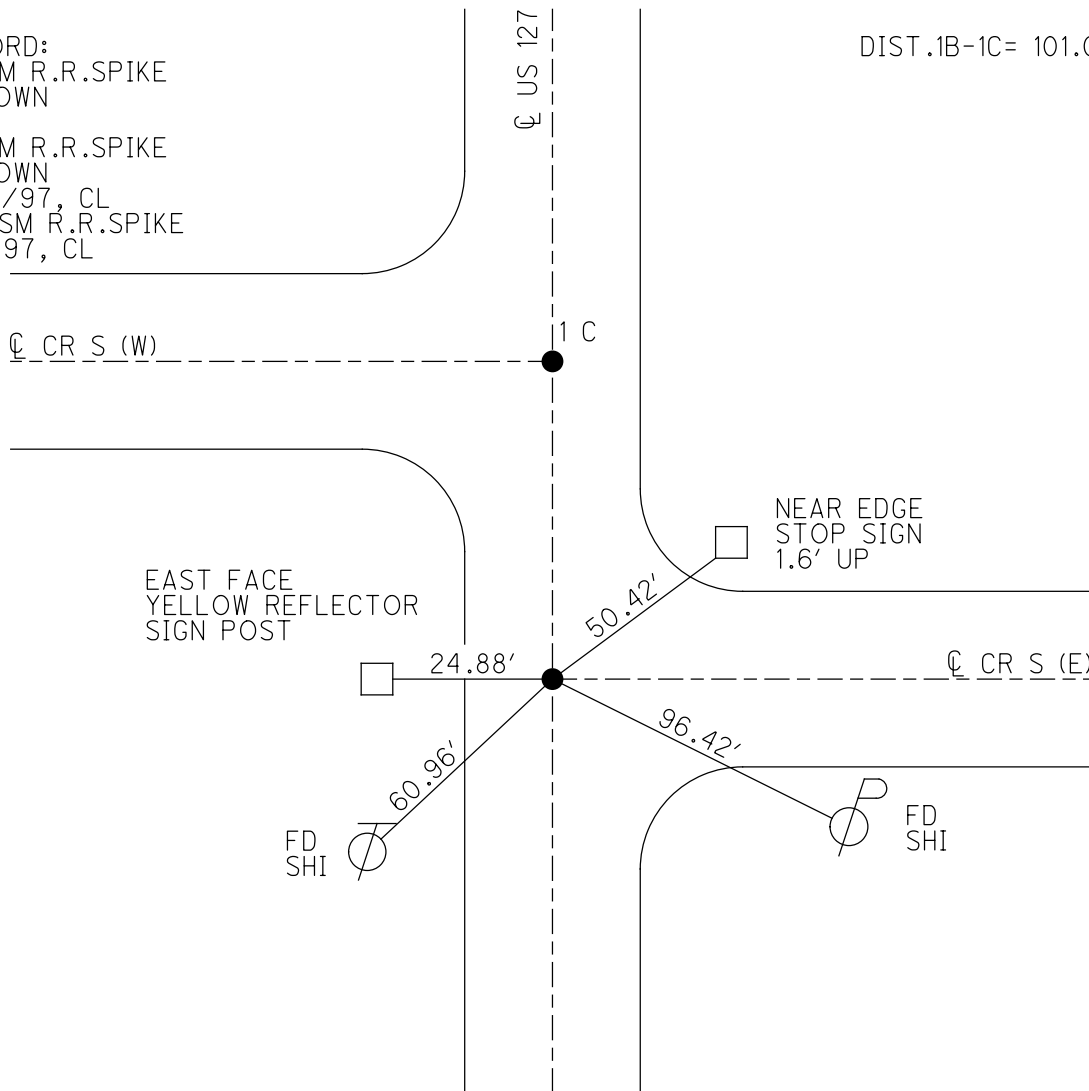
GRID: NORTHING: \_\_\_\_\_

EASTING: \_\_\_\_\_



RECORD:  
 FD SM R.R.SPIKE  
 3" DOWN  
 1985  
 FD SM R.R.SPIKE  
 3" DOWN  
 5/22/97, CL  
 SET SM R.R.SPIKE  
 7/2/97, CL

DIST.1B-1C= 101.01'



# O.D.O.T. DISTRICT 2 SURVEY OFFICE

PERSONNEL

REFERENCE NO. 1-B

SHEET 2 OF 60

NOTES LoEHRKE

H.C. Huss

R.C. Cox

DATE 5-22-97

WEATHER FAIR

TEMP. +60

ROUTE U.S. # 127

COUNTY FULTON

TOWNSHIP GORHAM

SECTION 13-18-19-24

T 9 S R 1 W 1 E

Set Sm R.R. Spikes

7-2-97  
c.l.

TYPE MONUMENT SMALL SPKS.

ON-SURFACE - BELOW 3"

LEFT- & PAV'T. - RIGHT 0.2'

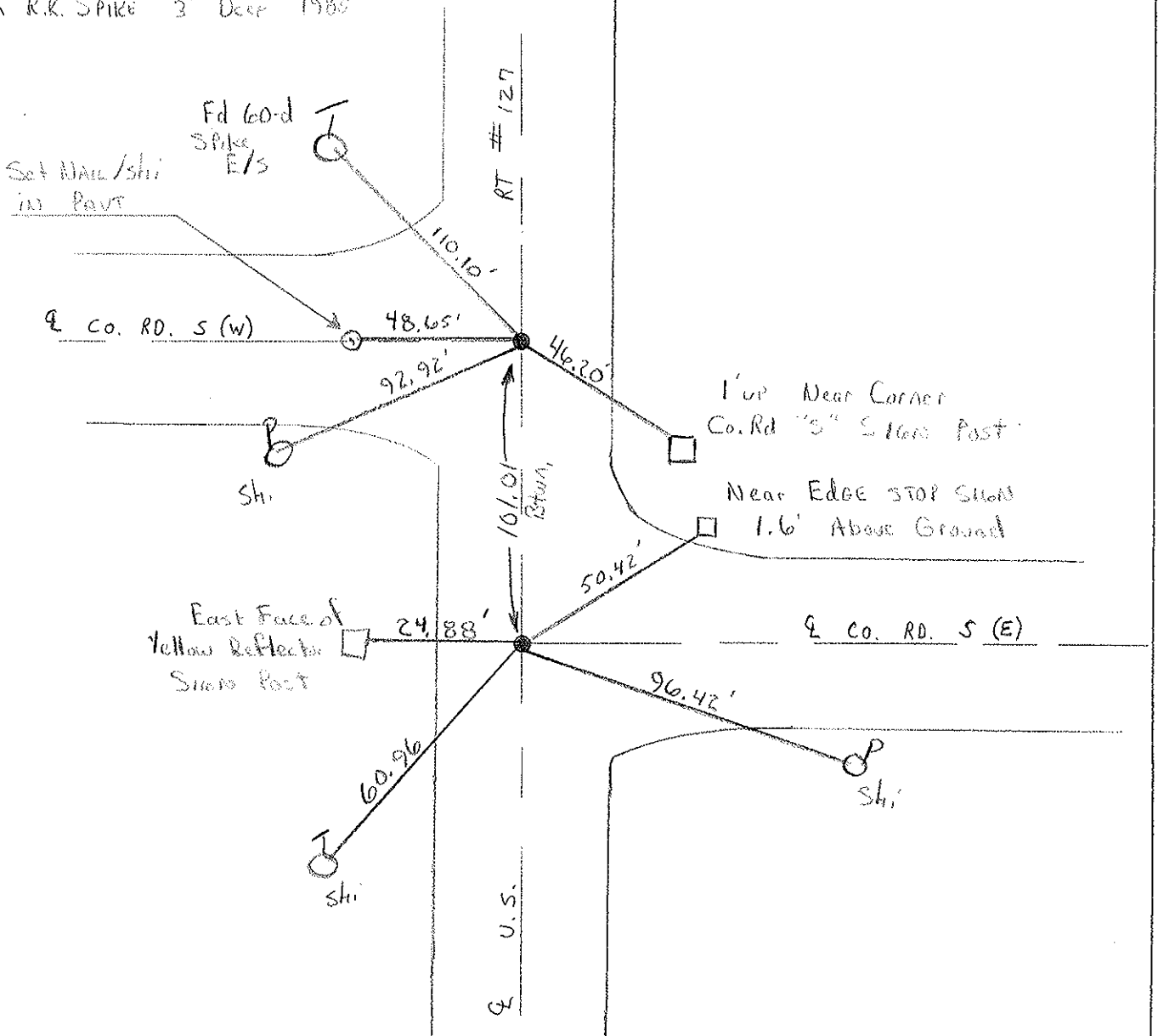
12.1' TO R+ EDGE PAVEMENT

S.L.M. 154746 156746.5

13	18
24	19



Sm R.R. SPIKE 3" Deep 1985



# O.D.O.T. DISTRICT 2 SURVEY OFFICE

PERSONNEL

REFERENCE NO. 1-B

SHEET 2 OF     

NOTES 1. Stone

H.C. D. Curtis

R.C. R. Michalak

J. Householder

DATE 2 Oct. 85

WEATHER Cool

TEMP. 53°

ROUTE US #127

COUNTY Fulton

TOWNSHIP Gorham

SECTION 13-18-19-24

T      R     

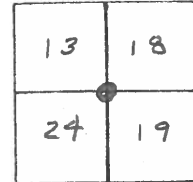
TYPE MONUMENT Small Spks.

ON SURFACE - BELOW Surface

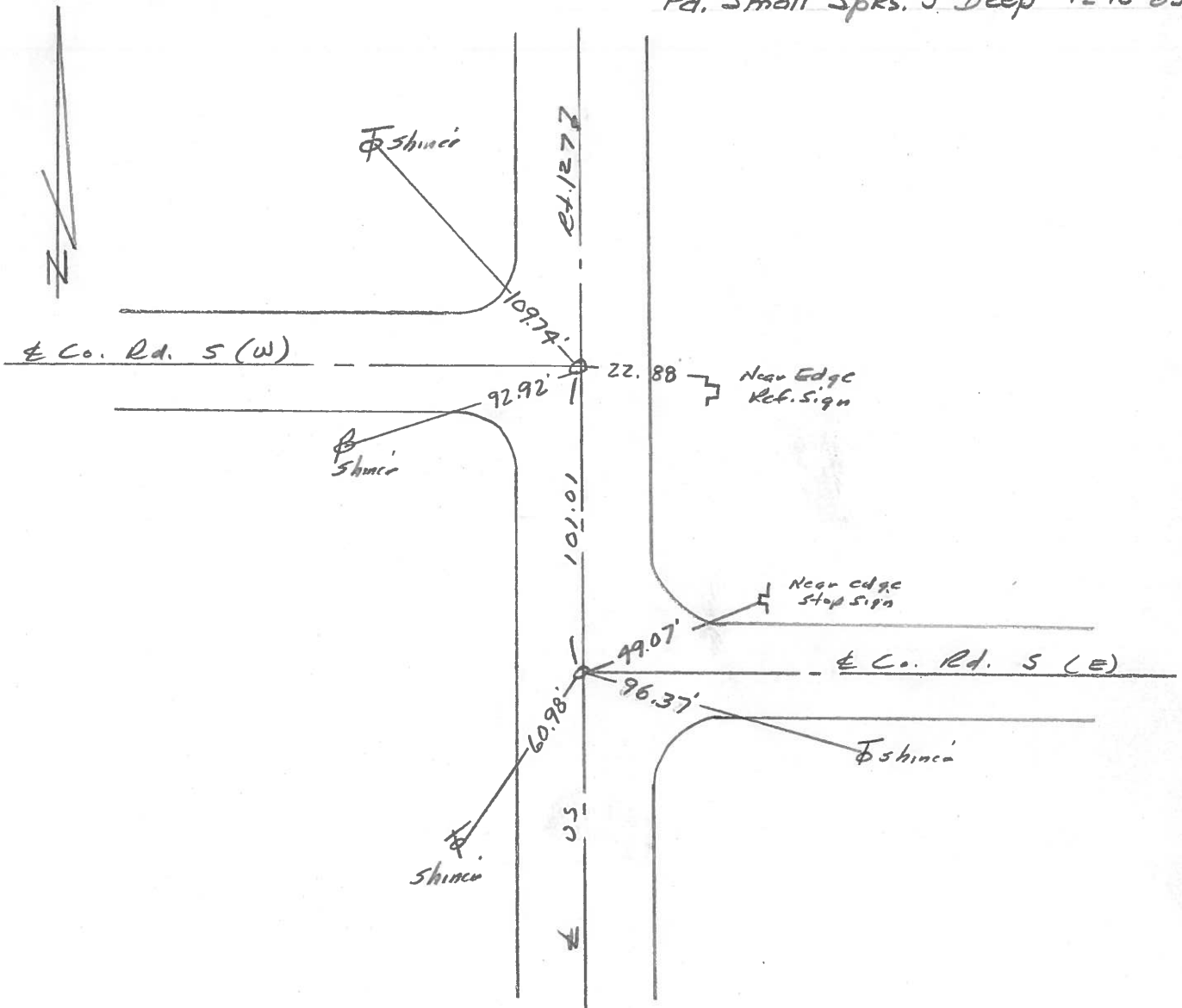
LEFT -  $\odot$  PAV'T. - RIGHT     

     TO      EDGE PAVEMENT

S.L.M.     



*Fd. Small Spks. 3" Deep - 12-13-85*



County Fulton US#127

Date 26 June 79

Township Gorham

Weather Fair

Section 19

Temp. 74°

T N, R E

Personnel 1. Stone

2. Michelak

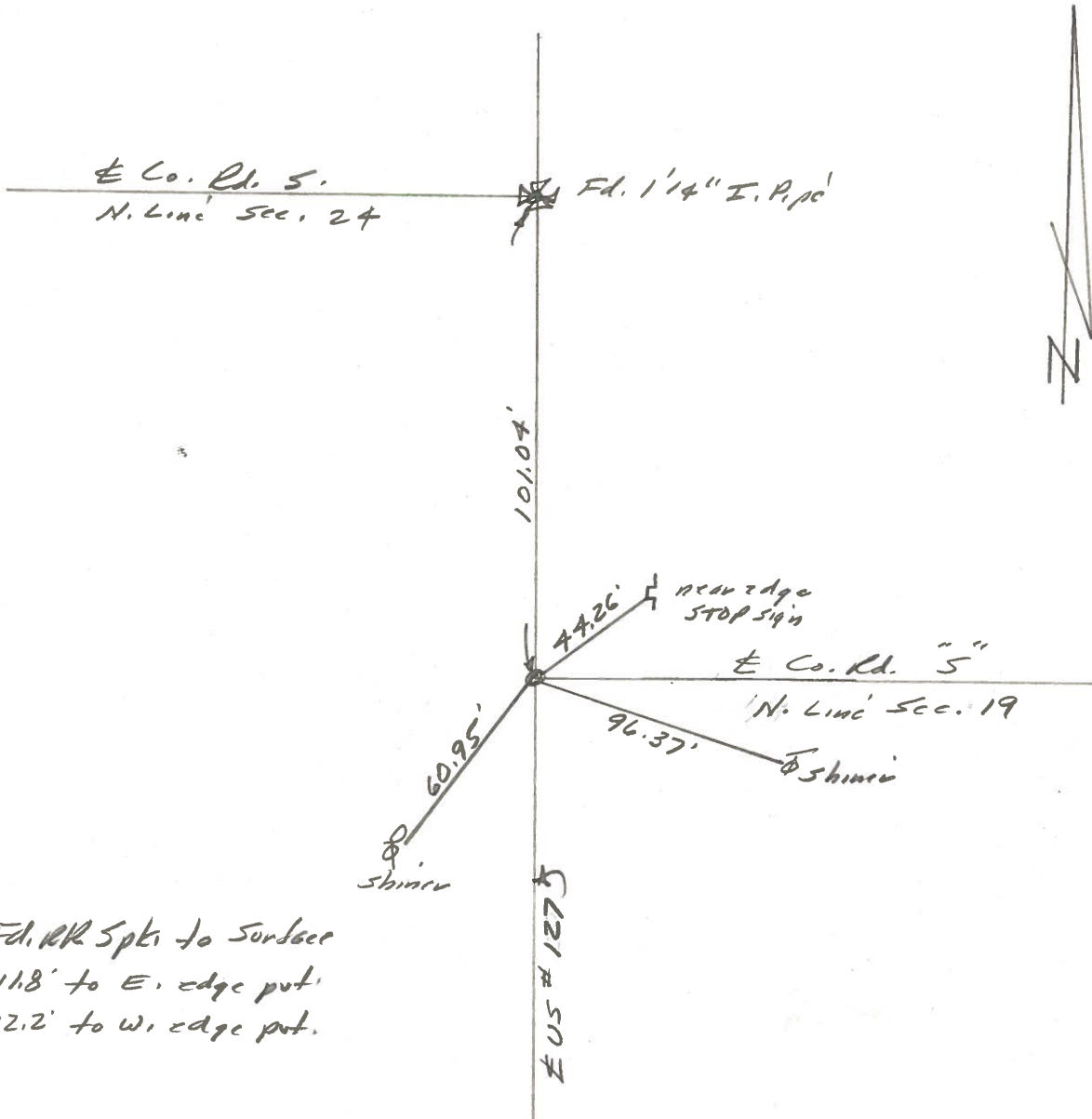
J. Coatis

D. Grandg.



REF. No. 1-B

SLM BLKTOP STA. 151+64

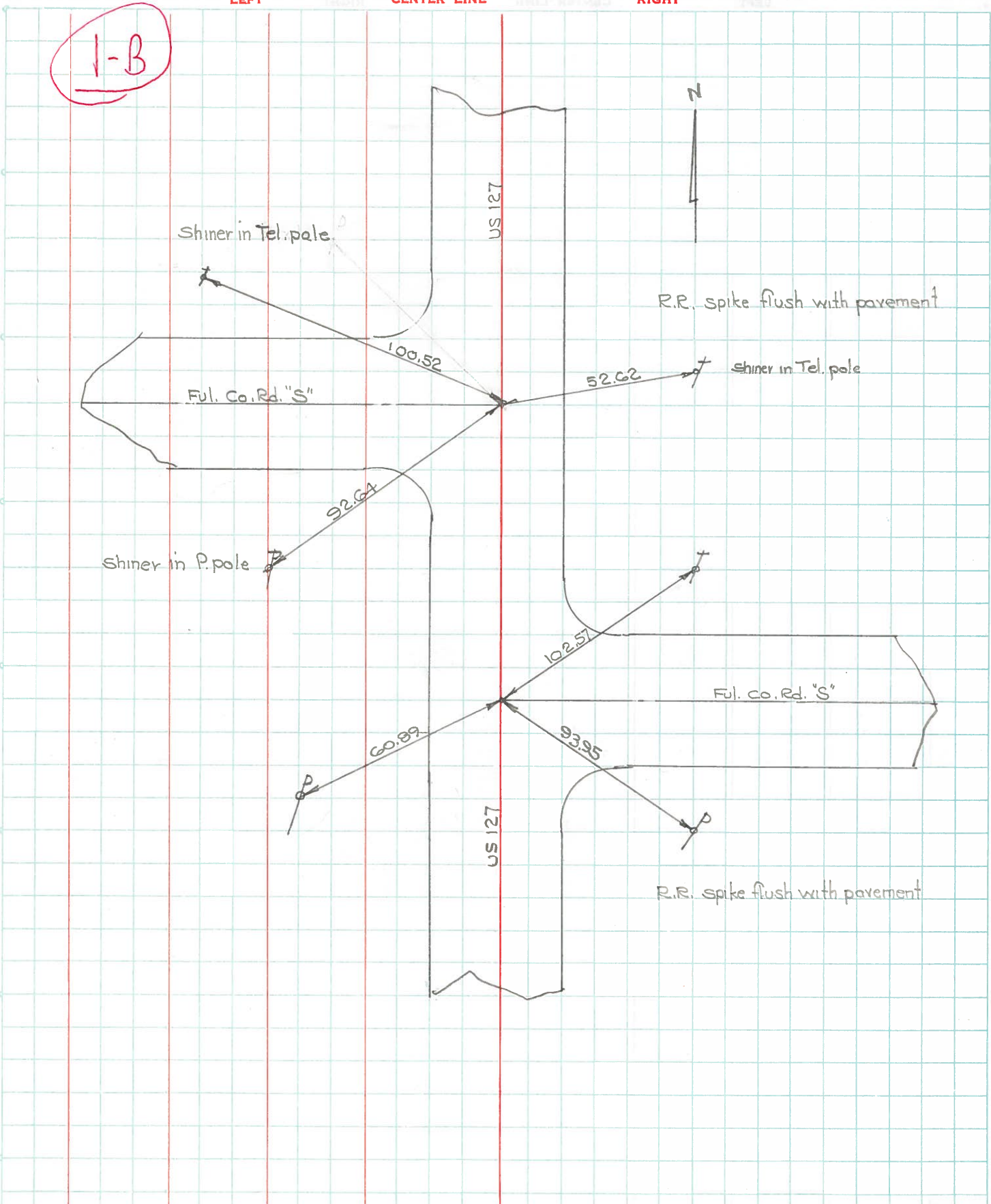


Fd. RR Spts to Surface  
11.8' to E. edge pt.  
12.2' to W. edge pt.

PERSONNEL	TITLE	PERSONNEL	TITLE	COUNTY	DATE	WEATHER	TEMP.
Denno				Fulton	July 6, 1966	Hot	85°
Curtis				S. R. 127			
Granata							
Oney				SEC.			

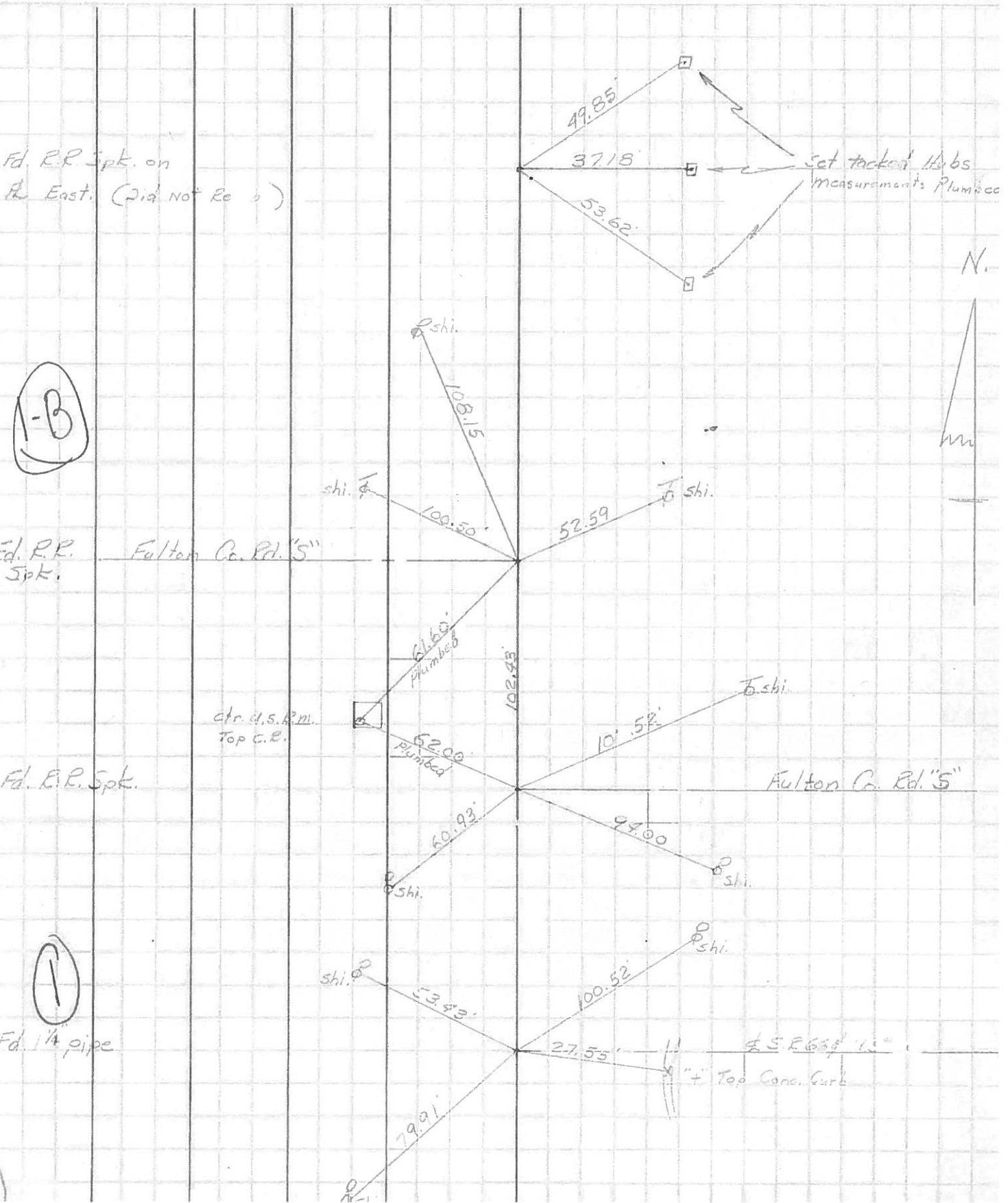
DESCRIPTION \_\_\_\_\_ LEFT \_\_\_\_\_ CENTER LINE \_\_\_\_\_ RIGHT \_\_\_\_\_ JOB NO. \_\_\_\_\_

1-B



PERSONNEL	TITLE	PERSONNEL	TITLE	COUNTY	DATE
Bunnside				Fulton	8-20-65
Smith				S. R. #127	WEATHER Clear
Ketcham				SEC.	TEMP. +75°

DESCRIPTION	LEFT	CENTER LINE	RIGHT	JOB NO.
-------------	------	-------------	-------	---------



PERSONNEL TITLE PERSONNEL TITLE  
 PESSEFALL \_\_\_\_\_  
 KNAPE \_\_\_\_\_  
 RYCHENER \_\_\_\_\_

COUNTY FU DATE 9-3-57  
 S. R. 127 WEATHER CLEAR  
 SEC. \_\_\_\_\_ TEMP. 70°

DESCRIPTION FROM Rt. #20 North to Michigan Line JOB NO. \_\_\_\_\_  
 LEFT CENTER LINE RIGHT

