

O.D.O.T. DISTRICT 2 SURVEY OFFICE (USE ONLY)

PERSONNEL

REFERENCE NO. 1 C

SHEET 4 OF 10

NOTES LOEHRKE

DATE 5/22/97

ROUTE US 127

H.C. HUSS

WEATHER FAIR

COUNTY FULTON

R.C. COX

TEMP. 60°

TOWNSHIP GORHAM

SECTION 19

DWG BY RHOADES

PID PAVETRAIN

T 9 S R 1 E

TYPE MONUMENT SM.R.R.SPIKE

~~ON SURFACE~~ - BELOW 3"

OFFSET  $\bar{C}$  PAVEMENT 0.2'  $\bar{L}$  : RT

12.1' TO RT EDGE PAVEMENT

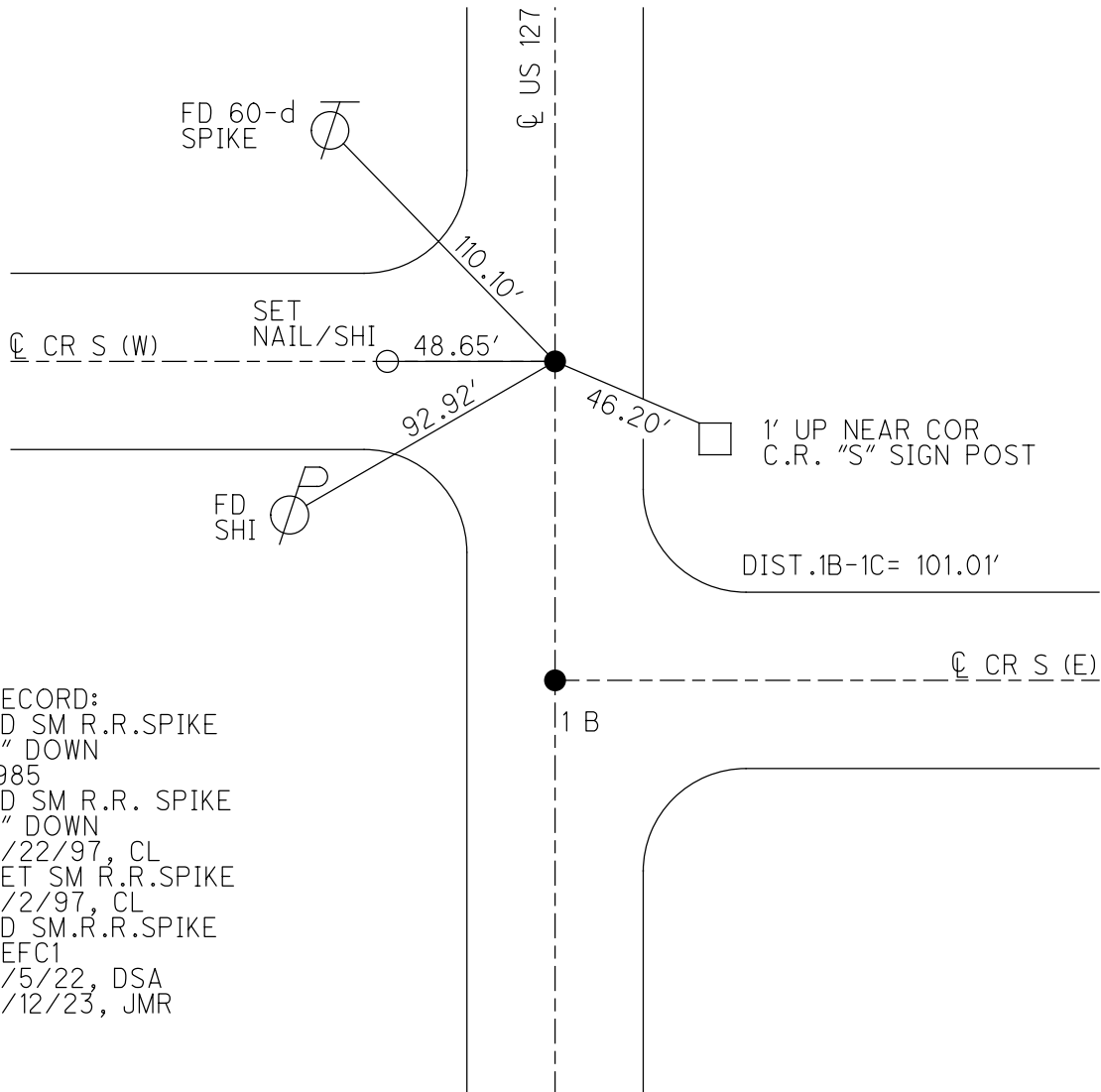
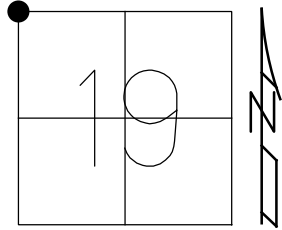
STATION: 155+46.5

HORZ.DATUM: NAD83 2011

GEOID: NAVD88 2018

GRID: NORTHING: 739252.570

EASTING: 1460363.056



RECORD:  
 FD SM R.R.SPIKE  
 3" DOWN  
 1985  
 FD SM R.R. SPIKE  
 3" DOWN  
 5/22/97, CL  
 SET SM R.R.SPIKE  
 7/2/97, CL  
 FD SM.R.R.SPIKE  
 REFC1  
 7/5/22, DSA  
 4/12/23, JMR

O.D.O.T. DISTRICT 2 SURVEY OFFICE (USE ONLY)

PERSONNEL

REFERENCE NO. 1 C

SHEET 4 OF 10

NOTES LOEHRKE

DATE 5/22/97

ROUTE US 127

H.C. HUSS

WEATHER FAIR

COUNTY FULTON

R.C. COX

TEMP. 60°

TOWNSHIP GORHAM

SECTION 19

DWG BY NIESE

PID \_\_\_\_\_

T 9 S R 1 E

TYPE MONUMENT SM.R.R.SPIKE

~~ON SURFACE~~ - BELOW 3"

OFFSET  $\bar{C}$  PAVEMENT 0.2'  $\bar{E}$  : RT

12.1' TO RT EDGE PAVEMENT

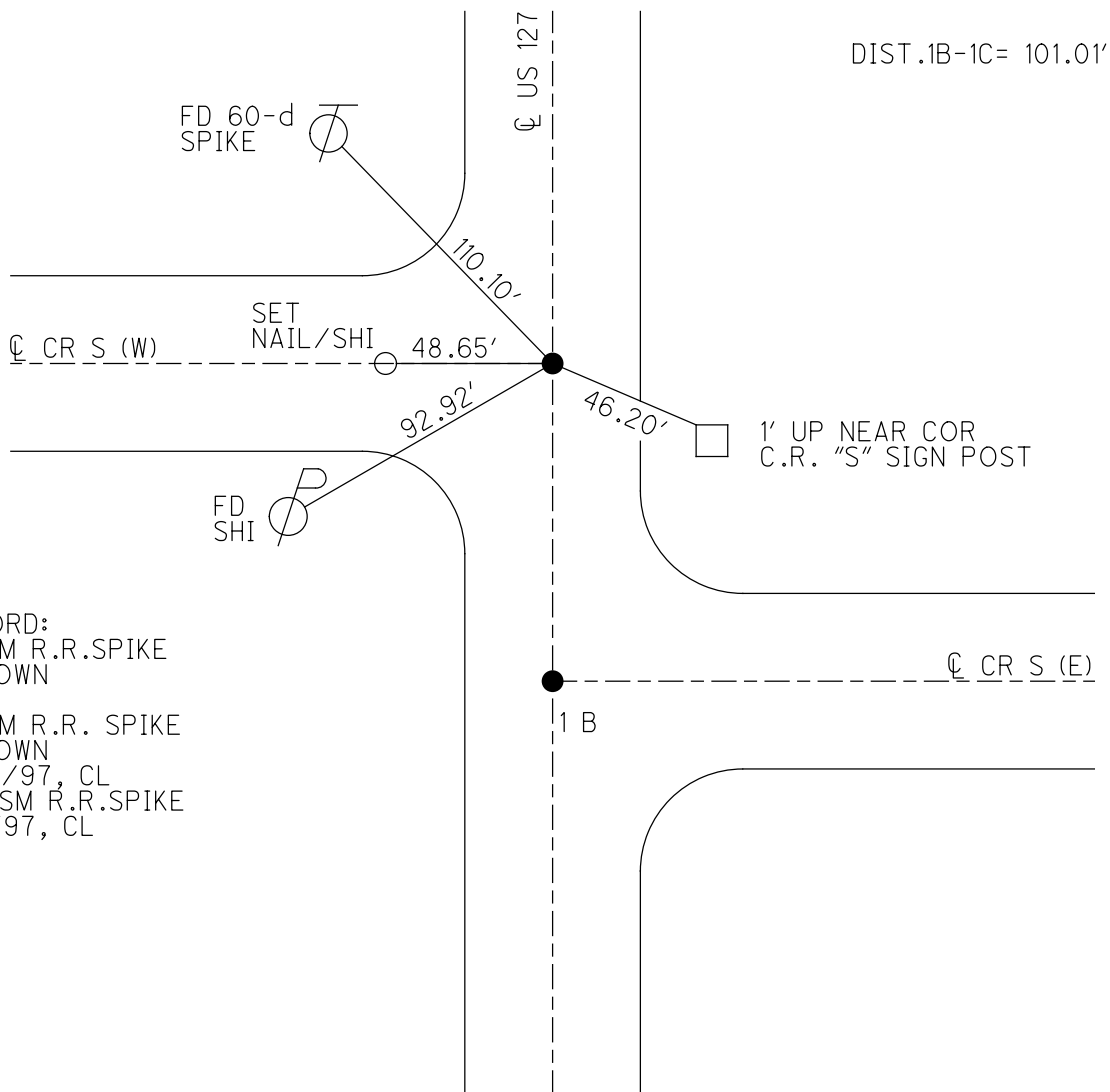
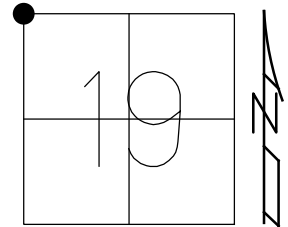
STATION: 156+46.5

HORZ.DATUM: \_\_\_\_\_

GEOID: \_\_\_\_\_

GRID: NORTHING: \_\_\_\_\_

EASTING: \_\_\_\_\_



RECORD:  
 FD SM R.R.SPIKE  
 3" DOWN  
 1985  
 FD SM R.R. SPIKE  
 3" DOWN  
 5/22/97, CL  
 SET SM R.R.SPIKE  
 7/2/97, CL

# O.D.O.T. DISTRICT 2 SURVEY OFFICE

PERSONNEL

REFERENCE NO. 1-B

SHEET 2 OF 60

NOTES LoEHRKE

H.C. Huss

R.C. Cox

DATE 5-22-97

WEATHER FAIR

TEMP. +60

ROUTE U.S. # 127

COUNTY FULTON

TOWNSHIP GORHAM

SECTION 13-18-19-24

T 9 S R 1 W 1 E

Set Sm R.R. Spikes

7-2-97  
c.l.

TYPE MONUMENT SMALL SPKS.

ON-SURFACE - BELOW 3"

LEFT- & PAV'T. - RIGHT 0.2'

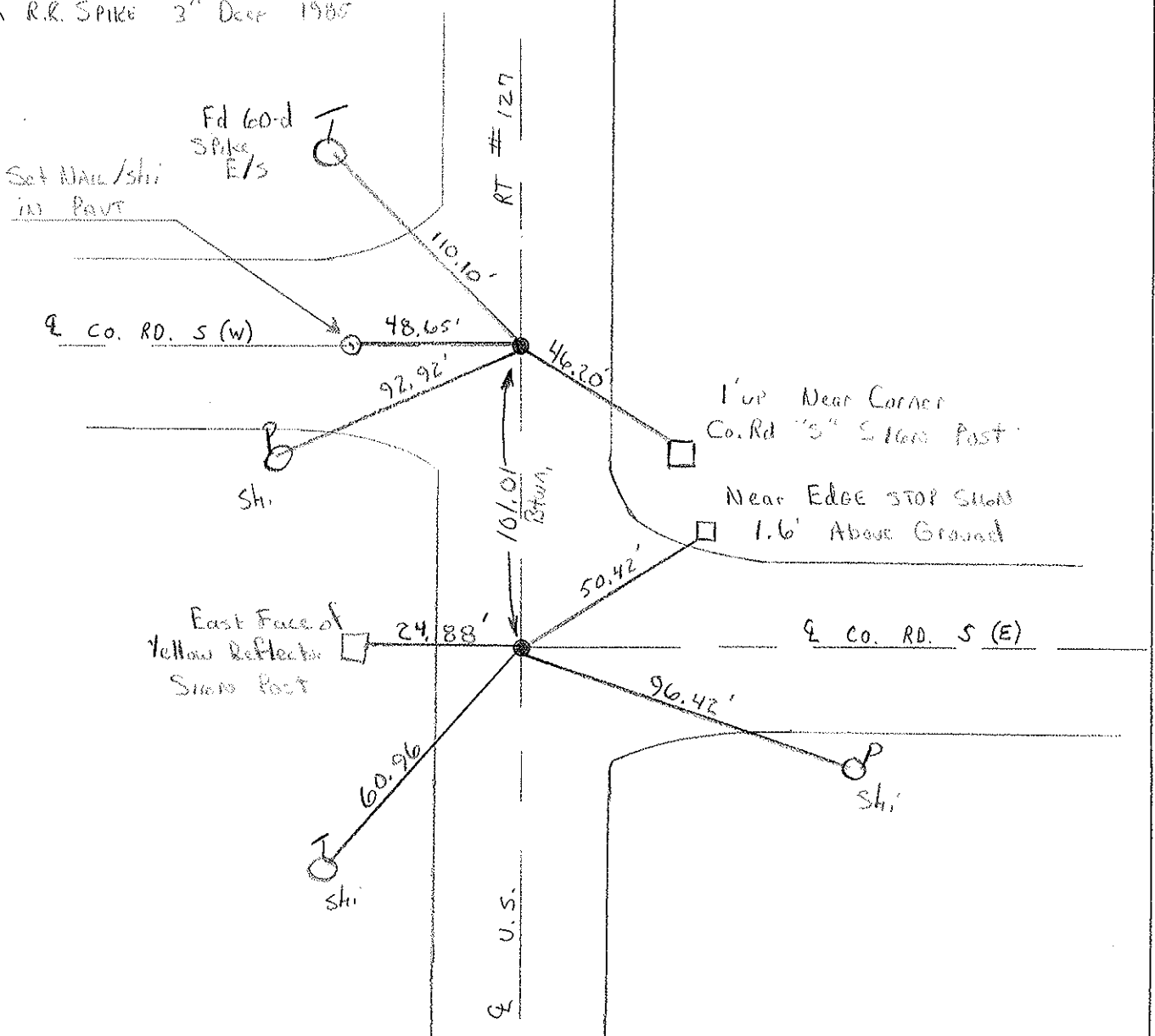
12.1' TO R+ EDGE PAVEMENT

S.L.M. 154746 156746.5

13	18
24	19



Sm R.R. SPIKE 3" Deep 1985



# O.D.O.T. DISTRICT 2 SURVEY OFFICE

PERSONNEL

REFERENCE NO. 1-B

SHEET 2 OF       

NOTES 1. Stone

H.C. D. Curtis

R.C. R. Michalak

J. Householder

DATE 2 Oct. 85

WEATHER Cool

TEMP. 53°

ROUTE US #127

COUNTY Fulton

TOWNSHIP Gorham

SECTION 13-18-19-24

T        R       

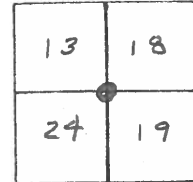
TYPE MONUMENT Small Spks.

ON SURFACE - BELOW Surface

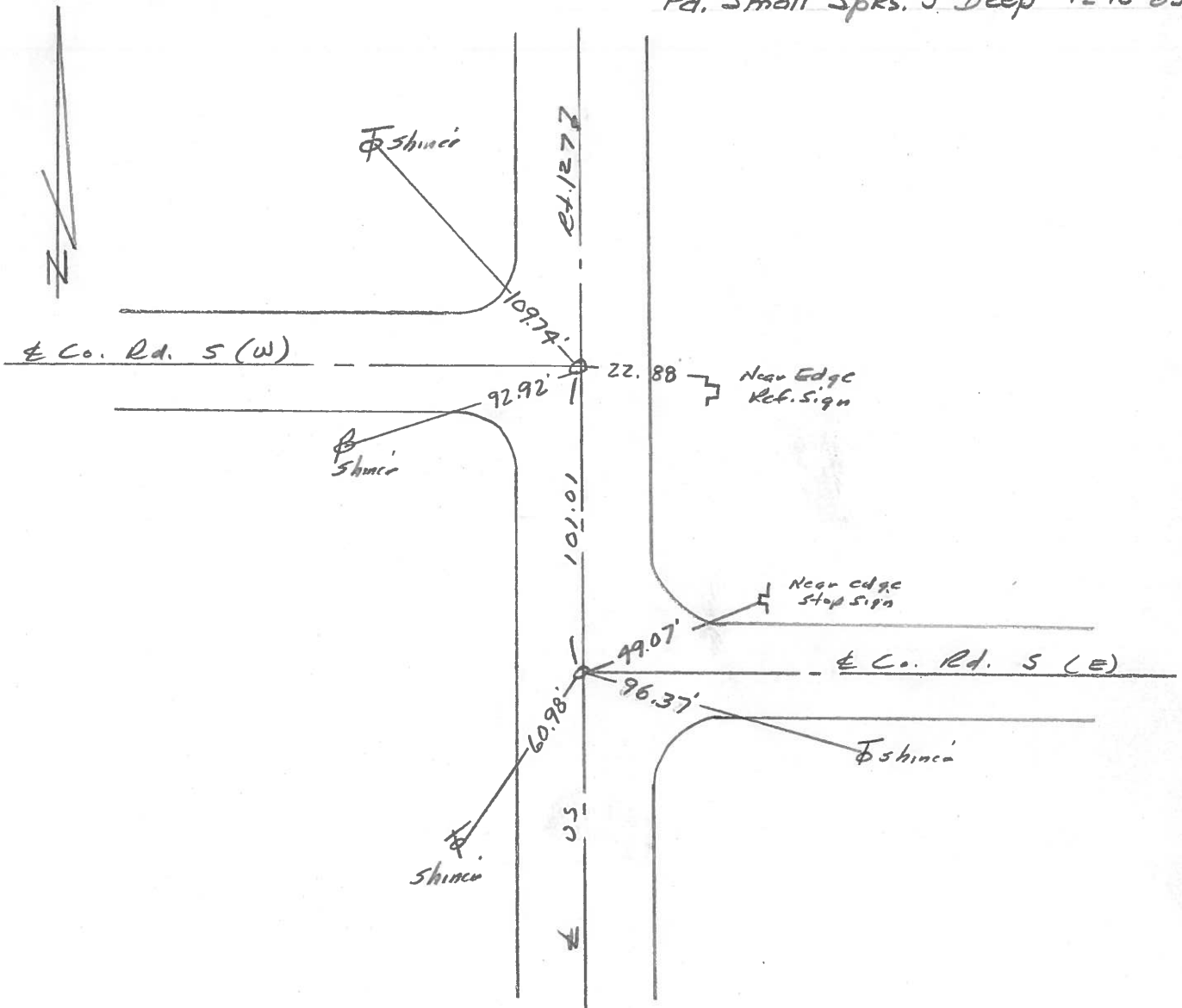
LEFT -  $\odot$  PAV'T. - RIGHT       

       TO        EDGE PAVEMENT

S.L.M.       



*Fd. Small Spks. 3" Deep - 12-13-85*



County Fulton US 127

Date 26 June 79

Township Forham

Weather Warm

Section 24

Temp. 76°

T\_N, R\_E

Personnel J. Stone

R. Michalak

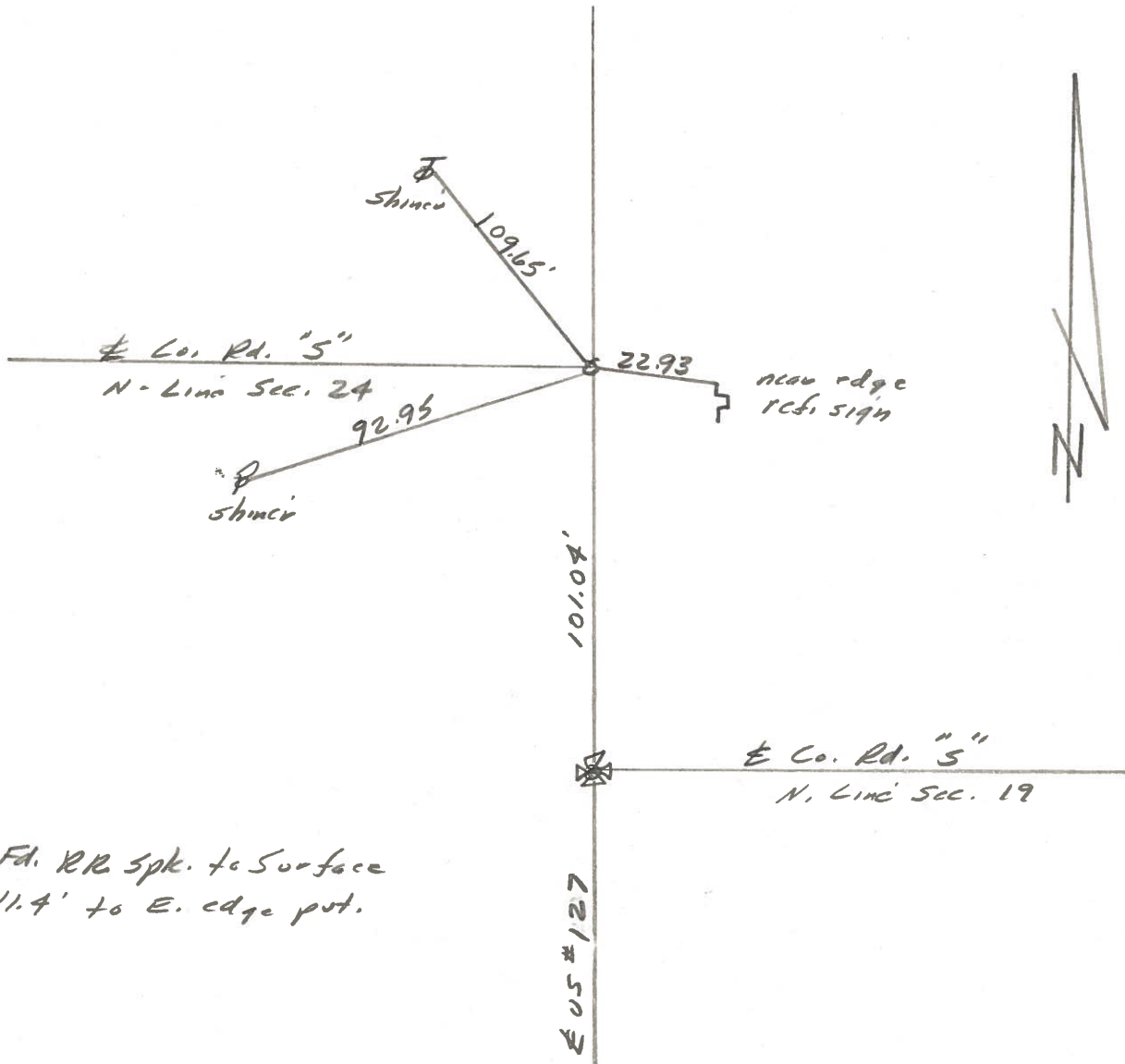
D. Curtis

P. Granota



REF. No. 1-B

SLM BLKTOP STA. 152165



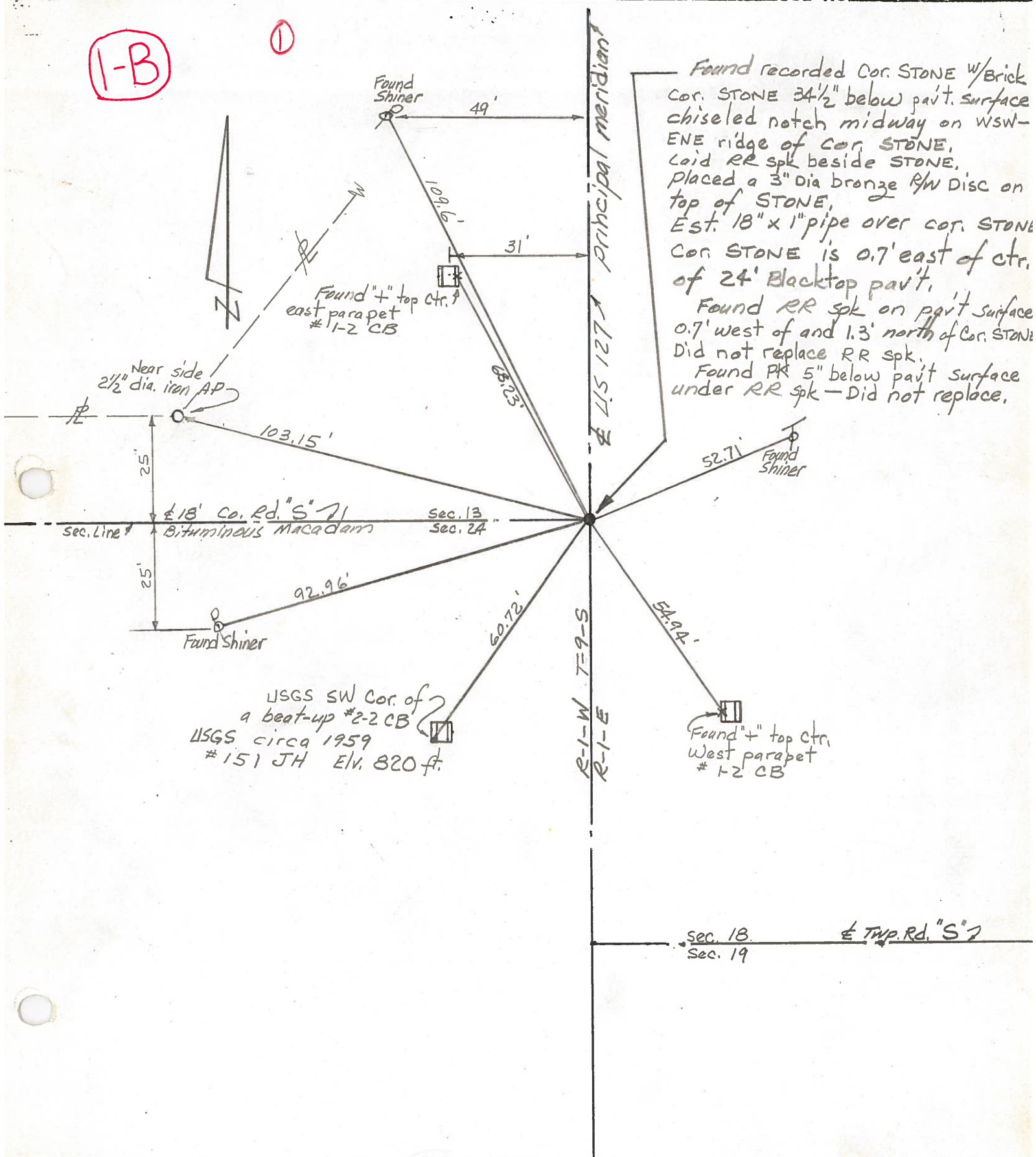
PERSONNEL	TITLE	PERSONNEL	TITLE
Red Beach			
W. Knape			
D. Boyle			
J. Bogdonas			

COUNTY FULTON DATE 27 Aug 74  
 S. R. US 127 R-1-W WEATHER \_\_\_\_\_  
 SEC. 13 & 24 Gorham Twp TEMP \_\_\_\_\_

DESCRIPTION CONTROL POINTS JOB NO. \_\_\_\_\_

**(1-B)**

**(1)**



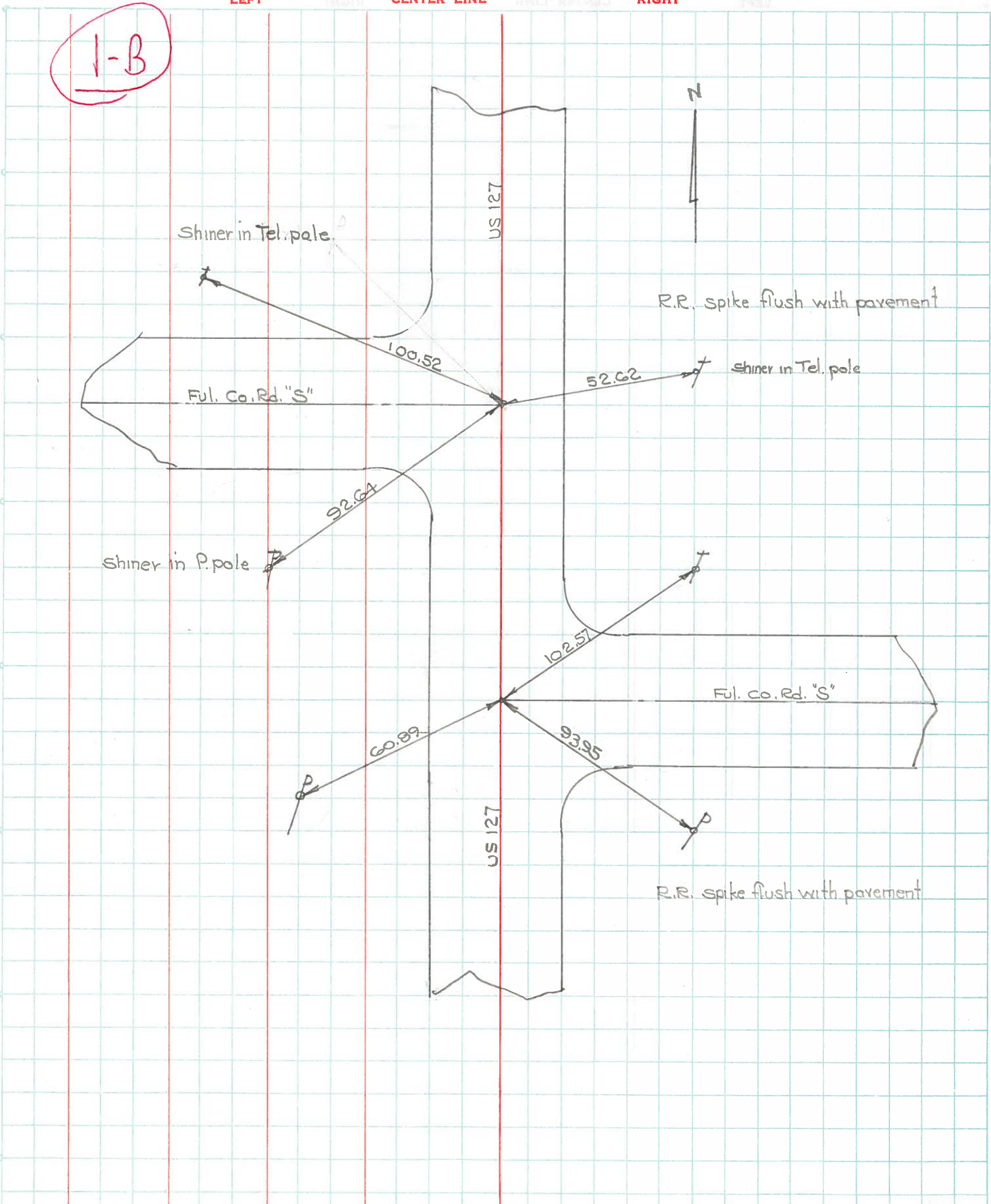
Found recorded Cor. Stone w/ Brick  
 Cor. Stone 34 1/2" below pav't. surface  
 chiseled notch midway on WSW-  
 ENE ridge of Cor. Stone,  
 laid RR spk beside Stone,  
 placed a 3" dia bronze R/W Disc on  
 top of Stone,  
 Est. 18" x 1" pipe over cor. Stone  
 Cor. Stone is 0.7' east of ctr.  
 of 24' Blacktop pav't.  
 Found RR spk on pav't surface  
 0.7' west of and 1.3' north of Cor. Stone  
 Did not replace RR spk.  
 Found PK 5" below pav't surface  
 under RR spk - Did not replace.

Sec. 18. 18' Twp. Rd. S 71  
 Sec. 19

PERSONNEL	TITLE	PERSONNEL	TITLE	COUNTY	DATE	WEATHER	TEMP.
Denno				Fulton	July 6, 1966	Hot	85°
Curtis				S. R. 127			
Granata							
Oney				SEC.			

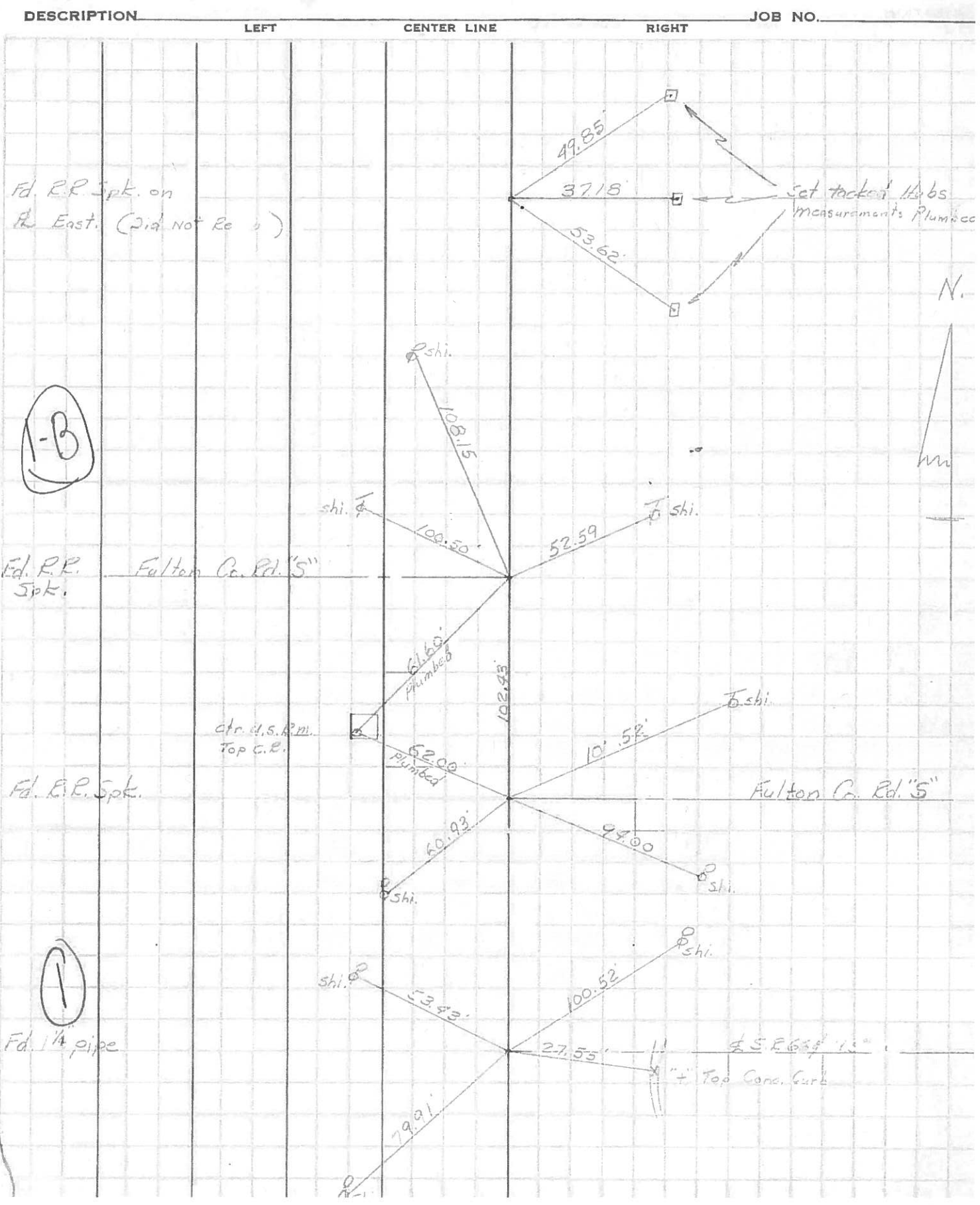
DESCRIPTION \_\_\_\_\_ LEFT \_\_\_\_\_ CENTER LINE \_\_\_\_\_ RIGHT \_\_\_\_\_ JOB NO. \_\_\_\_\_

1-B





PERSONNEL	TITLE	PERSONNEL	TITLE	COUNTY	DATE
Bunnside				Fulton	8-20-65
Smith				S. R. #127	WEATHER Clear
Ketcham				SEC.	TEMP. +75°





PERSONNEL	TITLE	PERSONNEL	TITLE
PESSEFALL			
KNAPE			
RYCHENER			

COUNTY FU DATE 9-3-57  
 S. R. 127 WEATHER CLEAR  
 SEC. \_\_\_\_\_ TEMP. 70°

DESCRIPTION FROM Rt. #20 North to Michigan Line JOB NO. \_\_\_\_\_  
 LEFT CENTER LINE RIGHT

