

O.D.O.T. DISTRICT 2 SURVEY OFFICE (USE ONLY)

PERSONNEL _____ REFERENCE NO. 2 SHEET 5 OF 10
 NOTES LOEHRKE DATE 5/22/97 ROUTE US 127
 H.C. HUSS WEATHER NICE COUNTY FULTON
 R.C. COX TEMP. 62° TOWNSHIP GORHAM
 SECTION 18
 DWG BY NIESE PID _____ T 9 N R 1 E

TYPE MONUMENT SM.R.R. SPIKE

~~ON SURFACE~~ - BELOW 2"

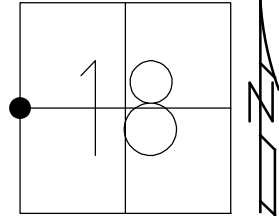
OFFSET \odot PAVEMENT 0.3' \pm : RT

11.5' TO RT EDGE PAVEMENT

STATION: 180+69

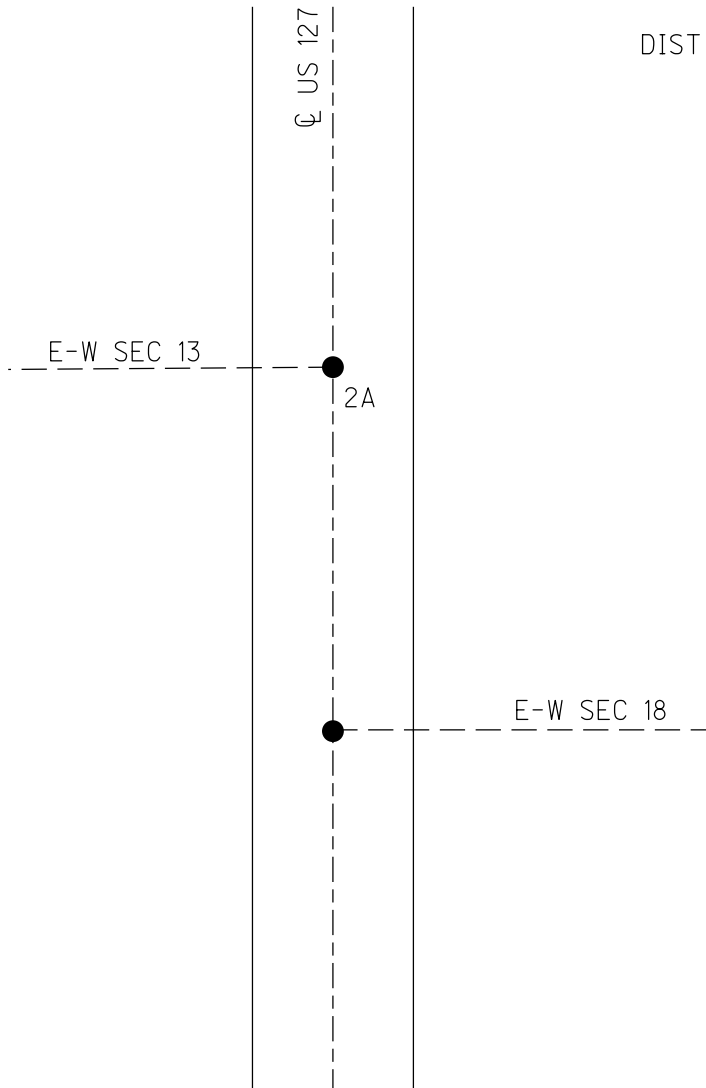
HORZ.DATUM: _____ GEOID: _____

GRID: NORTHING: _____ EASTING: _____



RECORD:
 STA 180+08
 FD SM R.R.SPIKE
 3" DOWN
 1985
 FD SM R.R.SPIKE
 2" DOWN
 5/22/97, CL
 SET SM R.R.SPIKE
 7/2/97, CL

DIST. 2-2B= 127.85'



O.D.O.T. DISTRICT 2 SURVEY OFFICE

PERSONNEL _____

REFERENCE NO. 2

SHEET 3 OF 6

NOTES LOEWAKE

H.C. NUSS

R.C. COY

DATE 5-22-97

WEATHER Nice

TEMP. +62

ROUTE U.S. #127

COUNTY FULTON

TOWNSHIP GORHAM

SECTION 13-18

T 9 S R 1 W/1E

Reset 7-2-97

C.L.

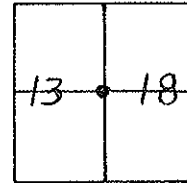
TYPE MONUMENT SMALL RR. SPKS.

ON SURFACE - BELOW 2"

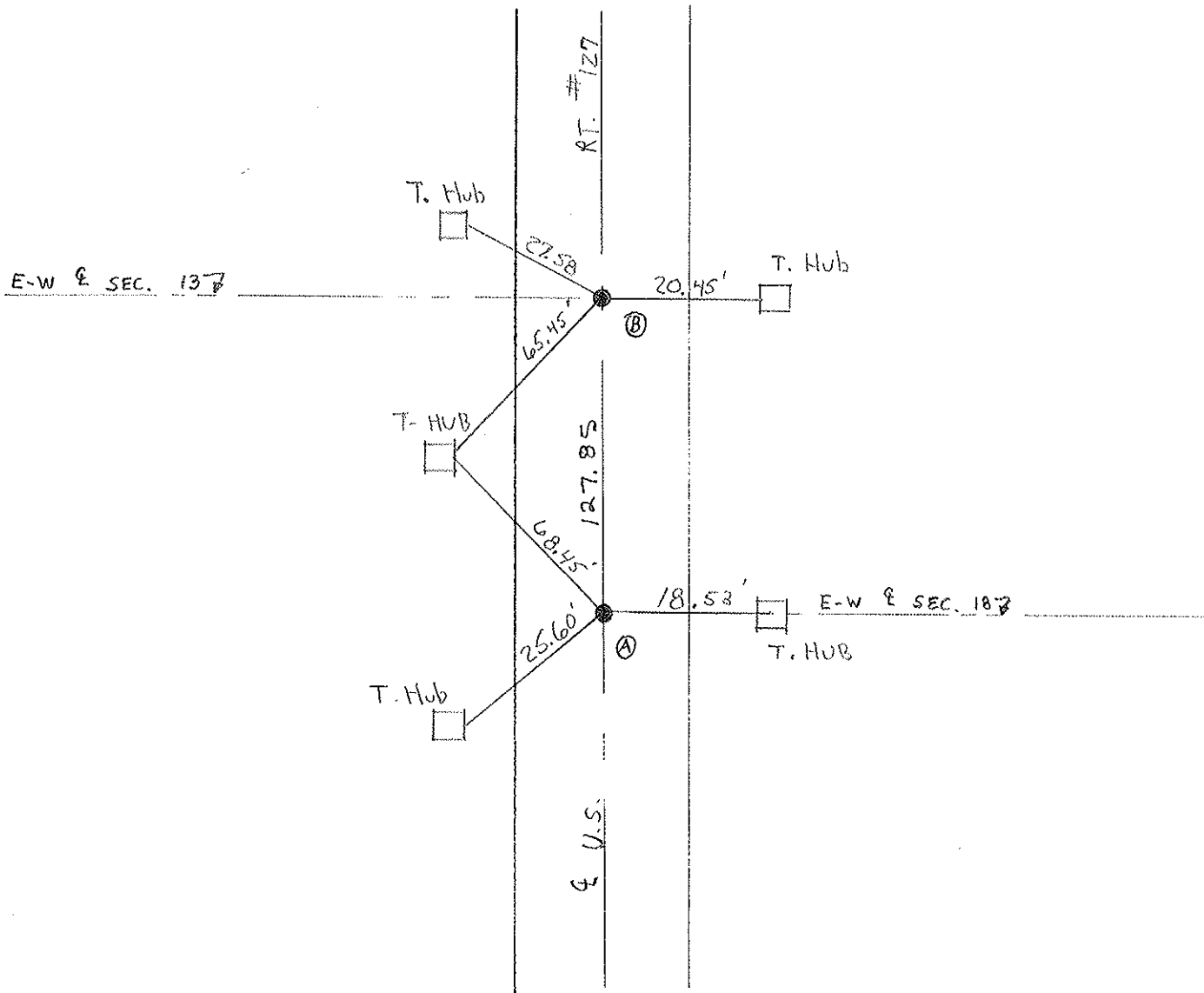
LEFT - 0 PAV'T. - RIGHT 0.3

11.5' TO R+ EDGE PAVEMENT

S.L.M. 180+69 181+97



RECORD: SLM = 180+08 @ 181+36 @
 FO. SM. RR. SPKS. 3" DEEP - 1985



O.D.O.T. DISTRICT 2 SURVEY OFFICE

PERSONNEL

REFERENCE NO. 2

SHEET 3 OF

NOTES 1. Stone

H.C. D. Curtis

R.C. R. Michalak

T. Householder

DATE 2 Oct. 85

WEATHER Cool

TEMP. 54°

ROUTE US #127

COUNTY Fulton

TOWNSHIP Gothen

SECTION 13-18

T R

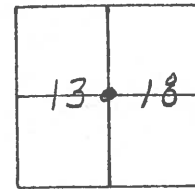
TYPE MONUMENT Small RR Spks

ON SURFACE - BELOW Surface

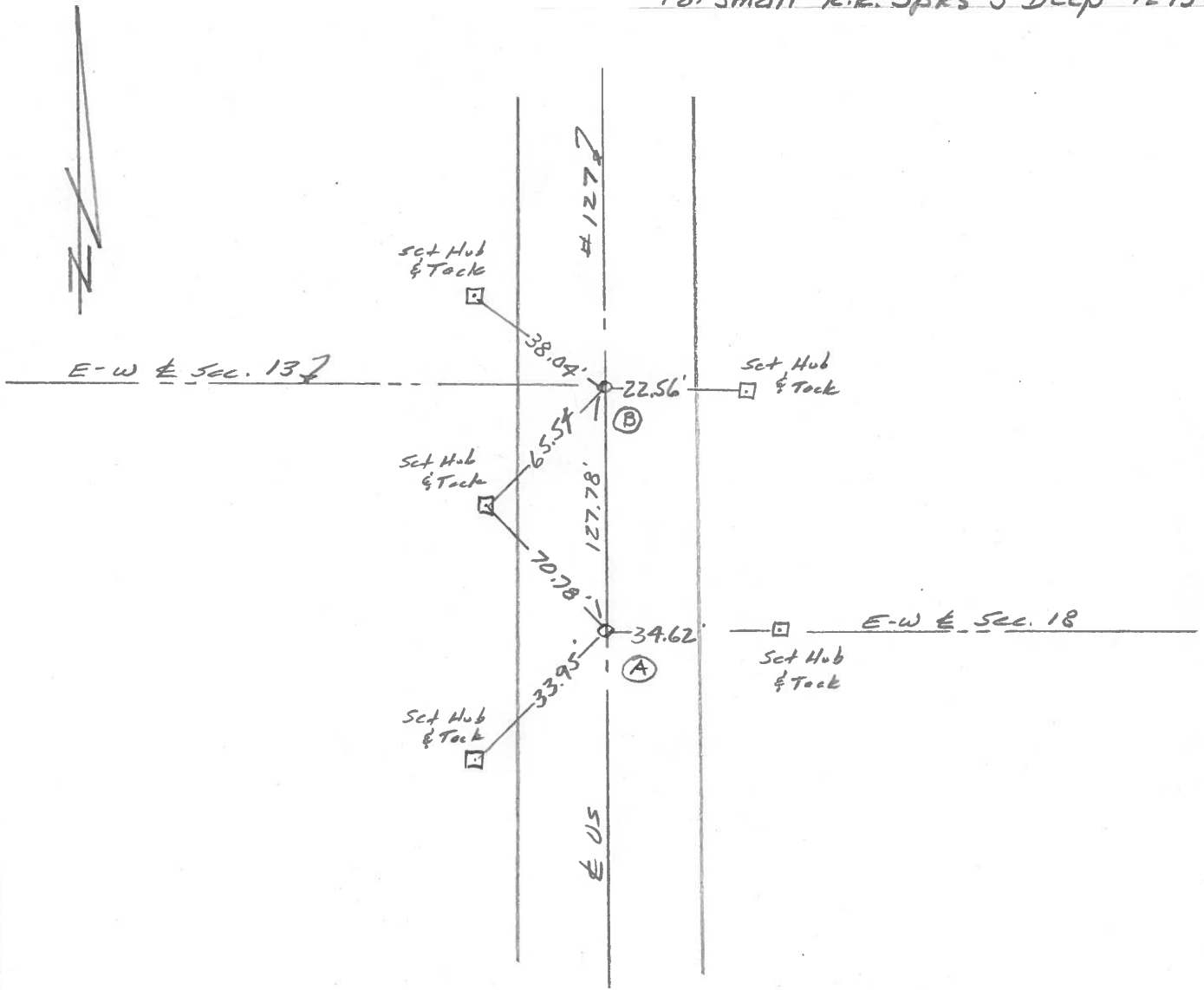
LEFT - \odot PAW'T. - RIGHT

 TO EDGE PAVEMENT

S.L.M. \textcircled{A} = 180+08, \textcircled{B} = 181+36



Fd. Small R.R. Spks 3" Deep - 12-13-85



County Fulton OS#127

Date 26 June 79

Township Gorham

Weather Wcom

Section 18

Temp. 77°

T_N, R_E

Personnel 1. Stone

R. Michalak

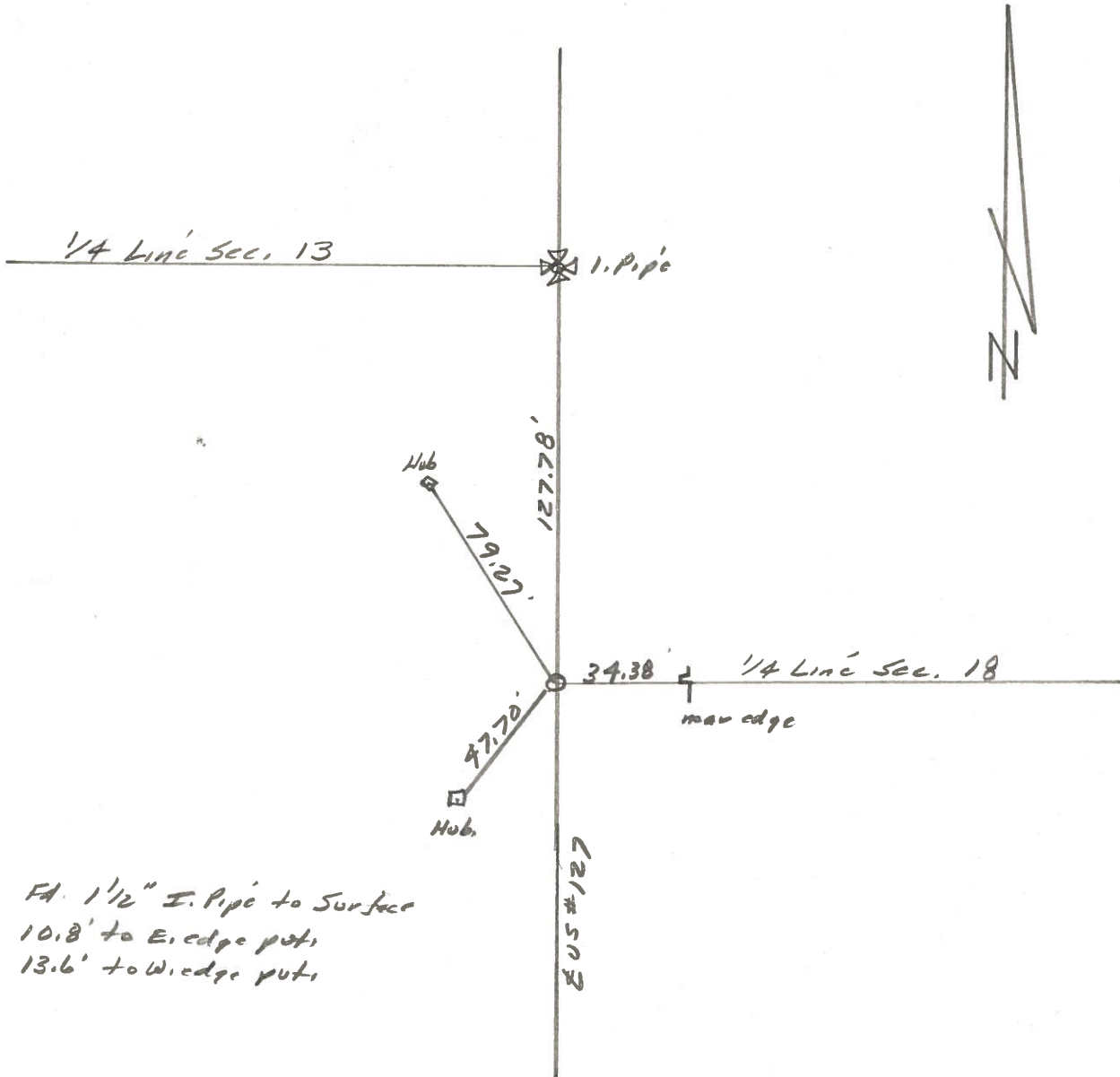
D. Curtis

D. Franeta



REF. No. 2

SLM BLKTON STA. 177+78



FA. 1 1/2" I. Pipe to Surface
10.8' to E. edge put,
13.6' to W. edge put

PERSONNEL TITLE PERSONNEL TITLE

Red Beach

W. Knape

D. Boyle

J. Bagdonas

COUNTY Fulton

DATE 13/14 Aug '74

S. R. US 127

WEATHER _____

SEC. Gorham Twp, Sec 13/18

TEMP _____

DESCRIPTION

CONTROL POINTS

JOB NO. _____

Qtr. stones between Co. Rds. "S" & "T"



Found E. Qtr. STONE, Sec. 13
Qtr. stone with brick as recorded.
Good pyramidal shaped STONE
20" below pav't surface.
Est. 16" x 1" pipe over STONE.
Qtr. STONE is 1.3' east of ctr.
of 24' Blacktop pav't.

Qtr. Line →

Est. 3/4" x 30" Rod
below sod on Qtr. Line

50.00'

R-1-W. US 127
R-1-E.

104.1'

63.91'

71.40'

US 127 Pav't.

6" Blacktop

7" W.B. Macadam

7" old original Bit. Mac.

20" Total metal

127.82'

sec. 13
sec. 18

71.40'

66.53'

63.91'

32'

Est. 3/4" x 30" Rod below sod
as indicated

50.00'

Qtr. Line →

Est. 3/4" x 30" Rod below sod
in old fence line

Found W. Qtr. STONE, Sec. 18

21 1/2" below pav't. surface,

Large Qtr. Stone with good
N-S ridge. chiseled "+" midway
on the 10" long ridge of STONE.
placed a bronze RW disc on top
of Stone. Est. 18" x 1" pipe over
the disc & Qtr. STONE.

R-1-W
R-1-E
US 127

284.9'

The Qtr. Stone is 1.5' east
of ctr. of 24' Blacktop pav't.

Found RR spk on surface. Found
RR spk 2" below surface. Found
PK 5" below surface. Did NOT REPLA
Qtr. Stone was 0.5' south and 1.4' east
of the RR spks & PK.

CB

24.5'

32.7'

PERSONNEL	TITLE	PERSONNEL	TITLE
Tomsic			
Granata			
Vanyo			
Boyle			

COUNTY Fulton DATE AUG, 27, 1913
 S. R. 127 WEATHER _____
 SEC. _____ TEMP. _____

DESCRIPTION _____ LEFT _____ CENTER LINE _____ RIGHT _____ JOB NO. _____

