

O.D.O.T. DISTRICT 2 SURVEY OFFICE (USE ONLY)

PERSONNEL

REFERENCE NO. 2 A

SHEET 6 OF 10

NOTES LOEHRKE

DATE 5/22/97

ROUTE US 127

H.C. HUSS

WEATHER NICE

COUNTY FULTON

R.C. COX

TEMP. 62°

TOWNSHIP GORHAM

SECTION 18

DWG BY RHOADES PID PAVETRAIN

T 9 N R 1 E

TYPE MONUMENT SM.R.R.SPIKE

~~ON SURFACE~~ - BELOW 2"

OFFSET  $\text{C}$  PAVEMENT 0.8' ~~RT~~ : RT

11.5' TO RT EDGE PAVEMENT

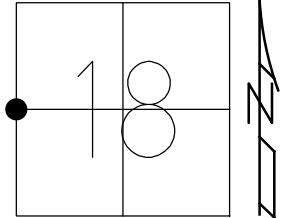
STATION: 181+97

HORZ.DATUM: NAD83 2011

GEOID: NAVD88 2018

GRID: NORTHING: 741893.182

EASTING: 1460406.174



RECORD:  
 STA 181+36  
 FD SM R.R.SPIKE  
 3" DOWN  
 1985  
 FD SM R.R.SPIKE  
 2" DOWN  
 5/22/97, CL  
 SET SM R.R.SPIKE  
 7/2/97, CL  
 FD SM.R.R.SPIKE  
 REFA2  
 7/5/22, DSA  
 4/12/23, JMR

E-W SEC 13

US 127

DIST .2-2B= 127.85'

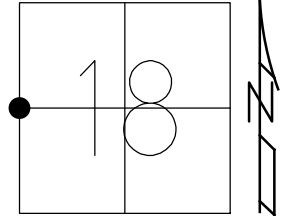
E-W SEC 18

2

O.D.O.T. DISTRICT 2 SURVEY OFFICE (USE ONLY)

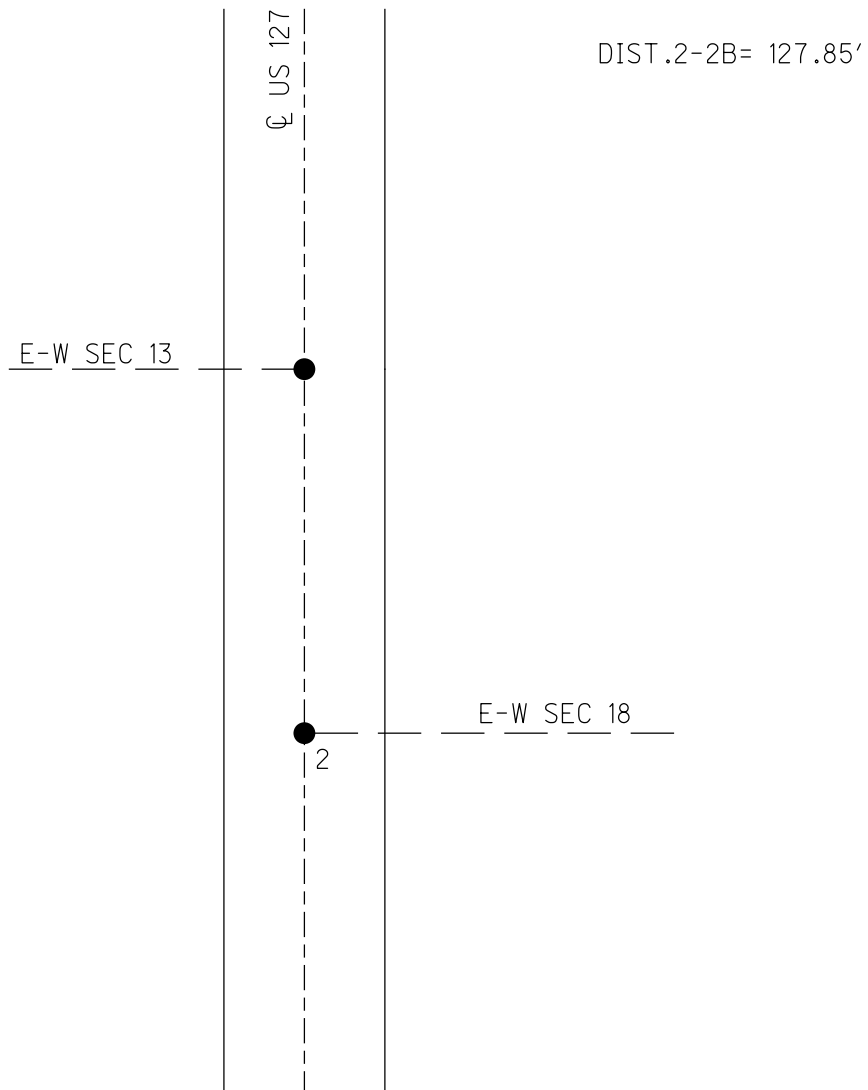
PERSONNEL \_\_\_\_\_ REFERENCE NO. 2 A SHEET 6 OF 10  
 NOTES LOEHRKE DATE 5/22/97 ROUTE US 127  
 H.C. HUSS WEATHER NICE COUNTY FULTON  
 R.C. COX TEMP. 62° TOWNSHIP GORHAM  
 SECTION 18  
 DWG BY NIESE PID \_\_\_\_\_ T 9 N R 1 E

TYPE MONUMENT SM.R.R.SPIKE  
~~ON SURFACE~~ - BELOW 2"  
 OFFSET CL PAVEMENT 0.3' ~~LT~~ : RT  
11.5' TO RT EDGE PAVEMENT  
 STATION: 181+97



HORZ.DATUM: \_\_\_\_\_ GEOID: \_\_\_\_\_  
 GRID: NORTHING: \_\_\_\_\_ EASTING: \_\_\_\_\_

RECORD:  
 STA 181+36  
 FD SM R.R.SPIKE  
 3" DOWN  
 1985  
 FD SM R.R.SPIKE  
 2" DOWN  
 5/22/97, CL  
 SET SM R.R.SPIKE  
 7/2/97, CL



# O.D.O.T. DISTRICT 2 SURVEY OFFICE

PERSONNEL \_\_\_\_\_

REFERENCE NO. 2

SHEET 3 OF 6

NOTES LOEWAKE

H.C. NUSS

R.C. COY

DATE 5-22-97

WEATHER Nice

TEMP. +62

ROUTE U.S. #127

COUNTY FULTON

TOWNSHIP GORHAM

SECTION 13-18

T 9 S R 1 W/1E

Reset 7-2-97

C.L.

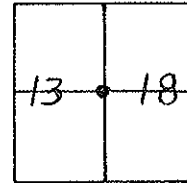
TYPE MONUMENT SMALL RR. SPKS.

ON SURFACE - BELOW 2"

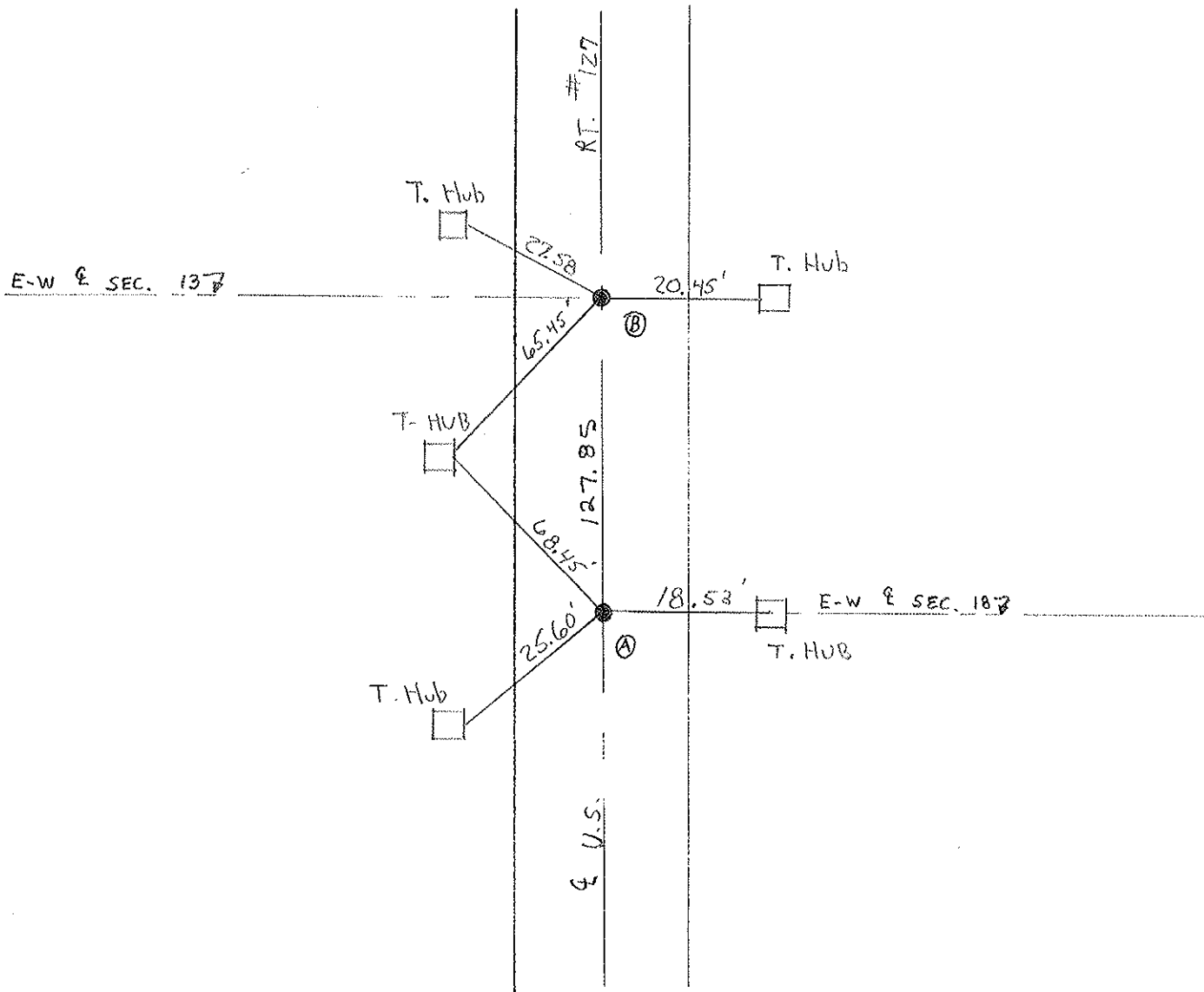
LEFT - 0.3 PAV'T. - RIGHT 0.3

11.5' TO R+ EDGE PAVEMENT

S.L.M. 180+69 181+97



RECORD: SLM = 180+08 @ 181+36 @  
 FO. SM. RR. SPKS. 3" DEEP - 1985



# O.D.O.T. DISTRICT 2 SURVEY OFFICE

PERSONNEL

REFERENCE NO. 2

SHEET 3 OF       

NOTES 1. Stone

H.C. D. Curtis

R.C. R. Michalak

T. Householder

DATE 2 Oct. 85

WEATHER Cool

TEMP. 54°

ROUTE US #127

COUNTY Fulton

TOWNSHIP Garham

SECTION 13-18

T        R       

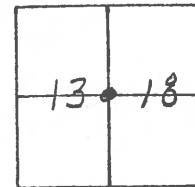
TYPE MONUMENT Small RR Spks

ON SURFACE - BELOW Surface

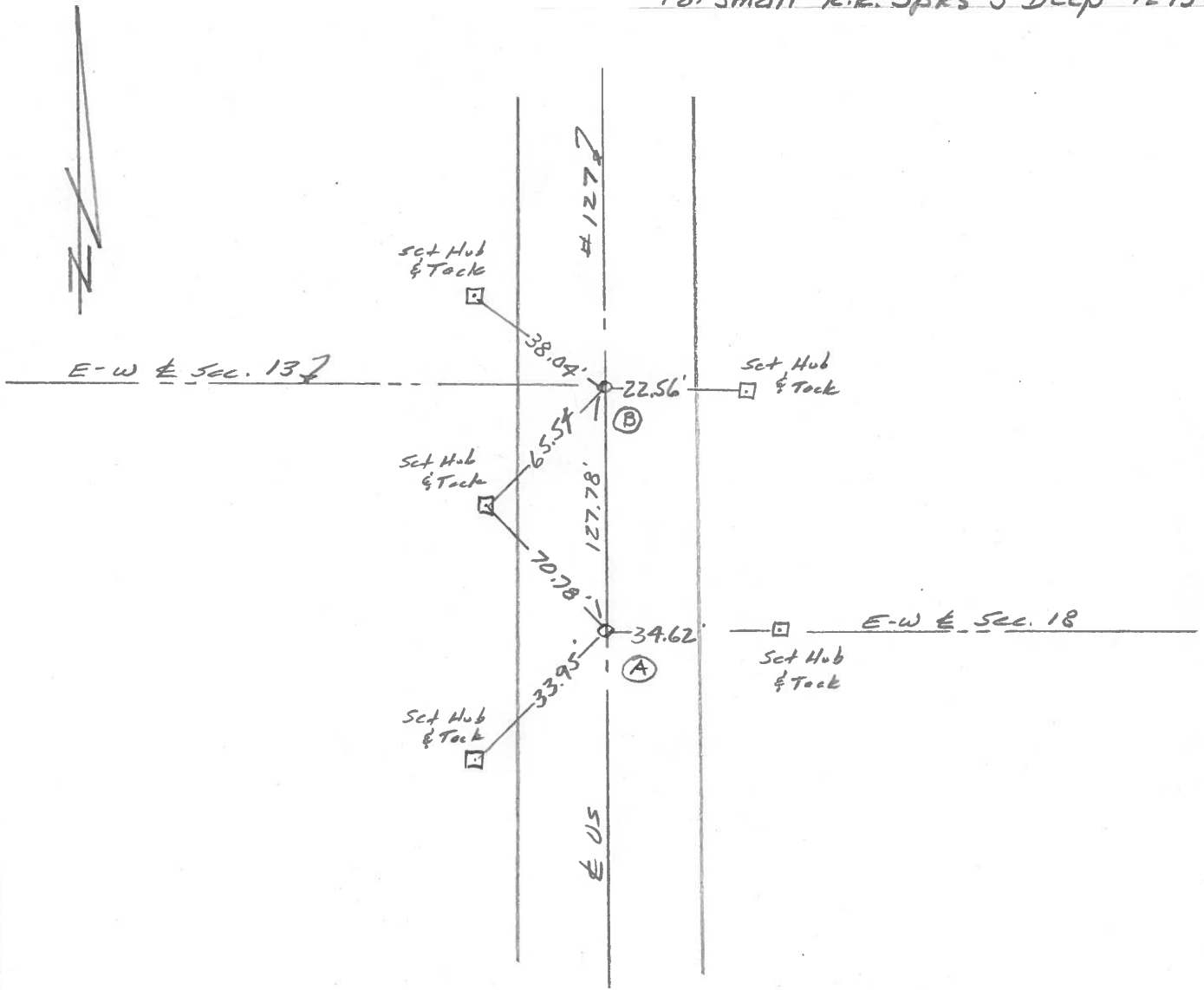
LEFT -  $\odot$  PAW'T. - RIGHT       

       TO        EDGE PAVEMENT

S.L.M.  $\textcircled{A}$  = 180+08,  $\textcircled{B}$  = 181+36



Fd. Small R.R. Spks 3" Deep - 12-13-85



County Fulton US #127

Date 26 June 79

Township Goodham

Weather Warm

Section 13

Temp. 77°

T N, R E

Personnel I. Stone

R. Michalak

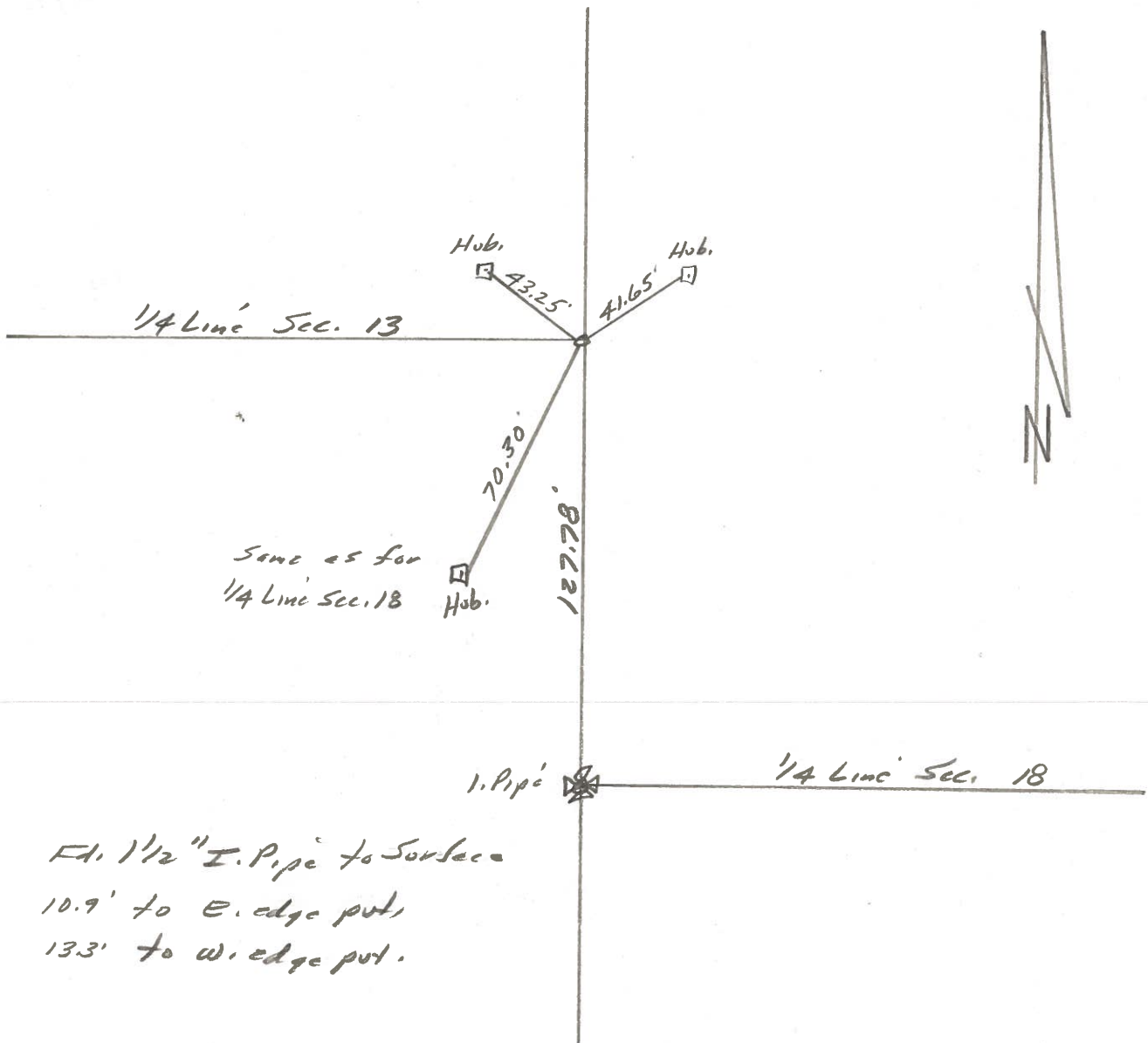
D. Curtis

D. Granata



REF. NO. 2

SLM BKTOP STA. 179+06



Ed. 1 1/2" I. Pipe to Surface  
 10.9' to E. edge put,  
 13.3' to W. edge put.

PERSONNEL TITLE PERSONNEL TITLE

Red Beach

W. Knape

D. Boyle

J. Bagdonas

COUNTY Fulton

DATE 13/14 Aug '74

S. R. US 127

WEATHER \_\_\_\_\_

SEC. Gorham Twp, Sec 13/18

TEMP \_\_\_\_\_

DESCRIPTION

CONTROL POINTS

JOB NO. \_\_\_\_\_

Qtr. stones between Co. Rds. "S" & "T"



Found E. Qtr. STONE, Sec. 13  
Qtr. stone with brick as recorded.  
Good pyramidal shaped STONE  
20" below pav't surface.  
Est. 16" x 1" pipe over STONE.  
Qtr. STONE is 1.3' east of ctr.  
of 24' Blacktop pav't.

Qtr. Line →

Est. 3/4" x 30" Rod  
below sod on Qtr. Line

50.00'

R-1-W. US 127  
R-1-E.

104.1'

127.82'

sec. 13  
sec. 18

63.91'

71.40'

71.40'

96.5'

32'

50.00'

Qtr. Line →

Est. 3/4" x 30" Rod below sod  
in old fence line

US 127 Pav't.  
6" Blacktop  
7" W.B. Macadam  
7" old original Bit. Mac.  
20" Total metal

Found W. Qtr. STONE, Sec. 18  
21 1/2" below pav't. surface,  
Large Qtr. Stone with good  
N-S ridge, chiseled "+" midway  
on the 10" long ridge of STONE.  
placed a bronze RW disc on top  
of Stone. Est. 18" x 1" pipe over  
the disc & Qtr. STONE.

The Qtr. Stone is 1.5' east  
of ctr. of 24' Blacktop pav't.

Found RR spk on surface. Found  
RR spk 2" below surface. Found  
PK 5" below surface. Did NOT REPLA  
Qtr. Stone was 0.5' south and 1.4' east  
of the RR spks & PK.

± US 127

284.9'

CB

24.5'

32.7'

ra

PERSONNEL	TITLE	PERSONNEL	TITLE
Tomsik			
Granata			
Vanyo			
Boyle			

COUNTY Fulton DATE AUG, 27, 1913  
 S. R. 127 WEATHER \_\_\_\_\_  
 SEC. \_\_\_\_\_ TEMP. \_\_\_\_\_

DESCRIPTION \_\_\_\_\_ LEFT \_\_\_\_\_ CENTER LINE \_\_\_\_\_ RIGHT \_\_\_\_\_ JOB NO. \_\_\_\_\_

