

O.D.O.T. DISTRICT 2 SURVEY OFFICE (USE ONLY)

PERSONNEL

REFERENCE NO. 3

SHEET 7 OF 10

NOTES LOEHRKE

DATE 5/22/97

ROUTE US 127

H.C. HUSS

WEATHER NICE

COUNTY FULTON

R.C. COX

TEMP. 62°

TOWNSHIP GORHAM

SECTION 18

DWG BY RHOADES

PID PAVETRAIN

T 9 N R 1 E

TYPE MONUMENT SM.R.R.SPIKE

~~ON SURFACE~~ - BELOW 2"

OFFSET \odot PAVEMENT 1.0' LT : ~~RT~~

11.2' TO LT EDGE PAVEMENT

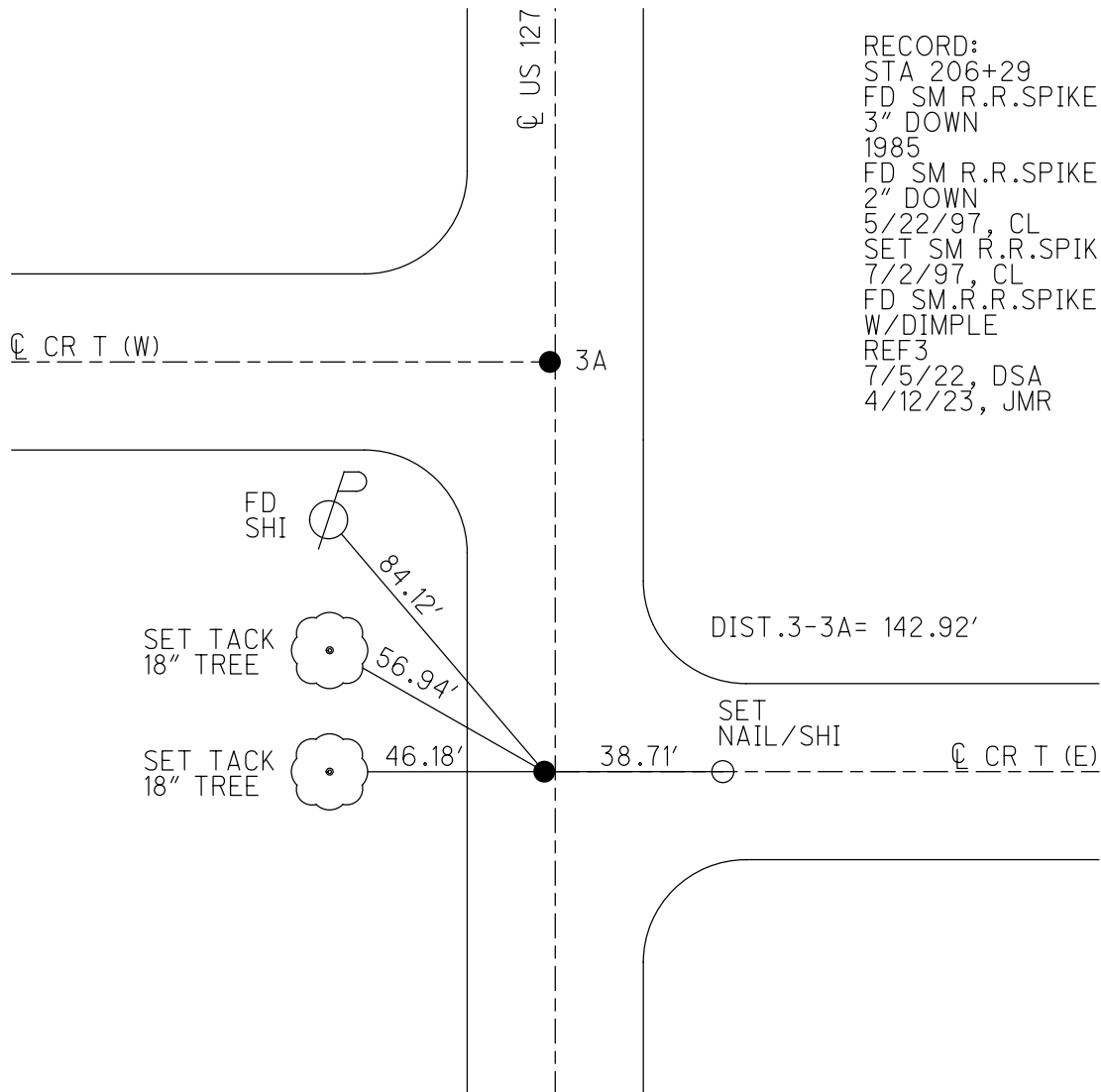
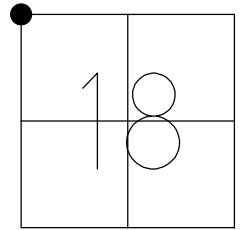
STATION: 207+00

HORZ.DATUM: NAD83 2011

GEOID: NAVD88 2018

GRID: NORTHING: 744385.951

EASTING: 1460443.945



RECORD:
 STA 206+29
 FD SM R.R.SPIKE
 3" DOWN
 1985
 FD SM R.R.SPIKE
 2" DOWN
 5/22/97, CL
 SET SM R.R.SPIKE
 7/2/97, CL
 FD SM R.R.SPIKE
 W/DIMPLE
 REF3
 7/5/22, DSA
 4/12/23, JMR

O.D.O.T. DISTRICT 2 SURVEY OFFICE (USE ONLY)

PERSONNEL _____

REFERENCE NO. 3

SHEET 7 OF 10

NOTES LOEHRKE

DATE 5/22/97

ROUTE US 127

H.C. HUSS

WEATHER NICE

COUNTY FULTON

R.C. COX

TEMP. 62°

TOWNSHIP GORHAM

SECTION 18

DWG BY NIESE PID _____

T 9 N R 1 E

TYPE MONUMENT SM.R.R.SPIKE

~~ON SURFACE~~ - BELOW 2"

OFFSET ϕ PAVEMENT 1.0' LT : ~~RT~~

11.2' TO LT EDGE PAVEMENT

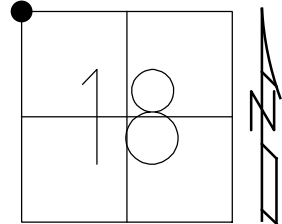
STATION: 207+00

HORIZ.DATUM: _____

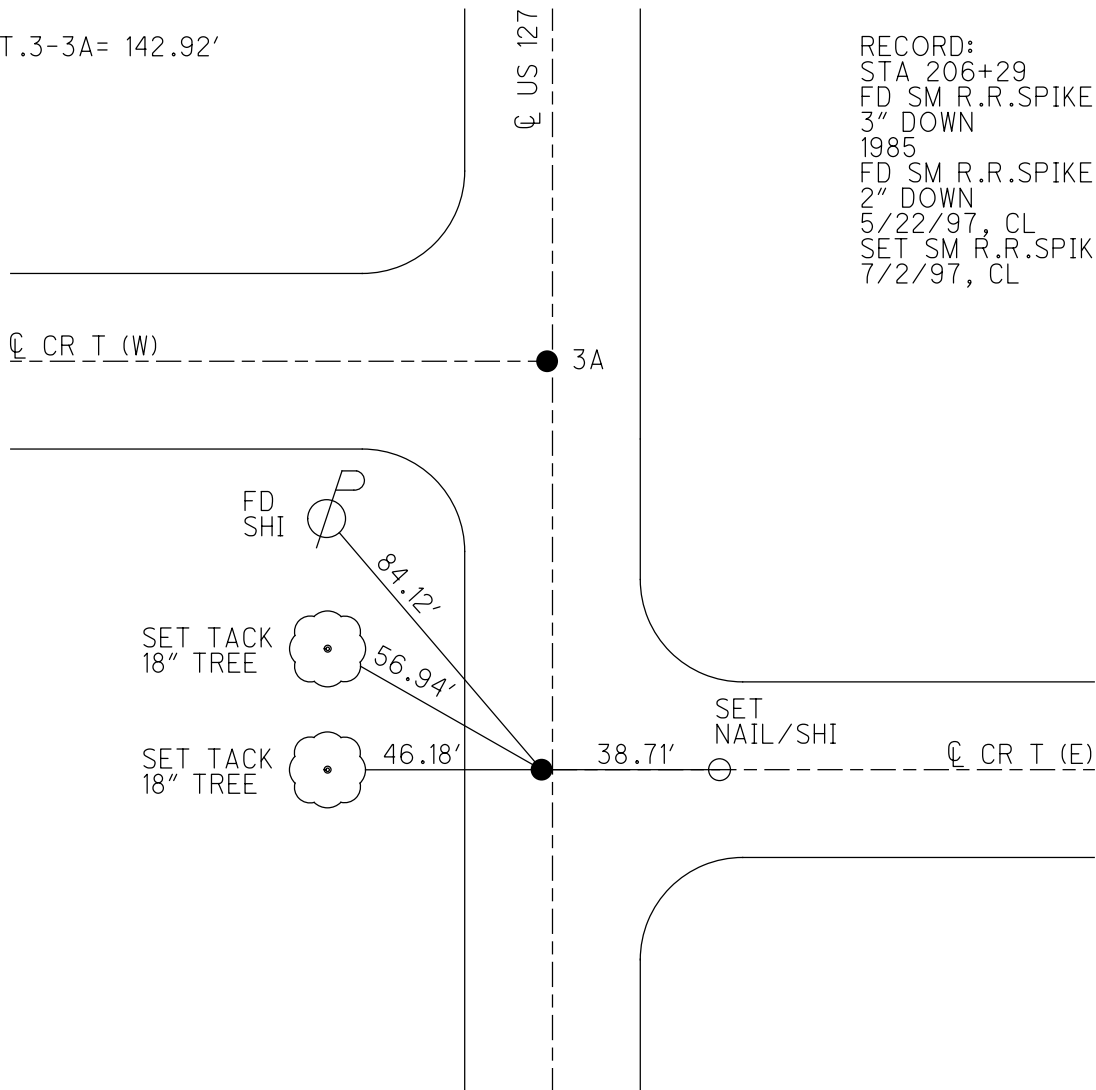
GEOID: _____

GRID: NORTHING: _____

EASTING: _____



DIST. 3-3A = 142.92'



RECORD:
 STA 206+29
 FD SM R.R.SPIKE
 3" DOWN
 1985
 FD SM R.R.SPIKE
 2" DOWN
 5/22/97, CL
 SET SM R.R.SPIKE
 7/2/97, CL

O.D.O.T. DISTRICT 2 SURVEY OFFICE

PERSONNEL _____

REFERENCE NO. 3

SHEET 4 OF 6

NOTES LoENRKE

H.C. Huss

DATE 5-22-97

ROUTE U.S. # 127

R.C. Cox

WEATHER Nice

COUNTY FULTON

TEMP. _____

TOWNSHIP GORNAM

SECTION 7-12-13-18

Reset

T 9 S R 1 W / I E

TYPE MONUMENT Sm. R.R. SPTS. 7-2-97

~~ON~~-SURFACE - BELOW 2"

LEFT-~~C~~ PAV'T. - ~~RIGHT~~ 1.0 $\frac{1}{2}$ 0.7

TO EDGE PAVEMENT

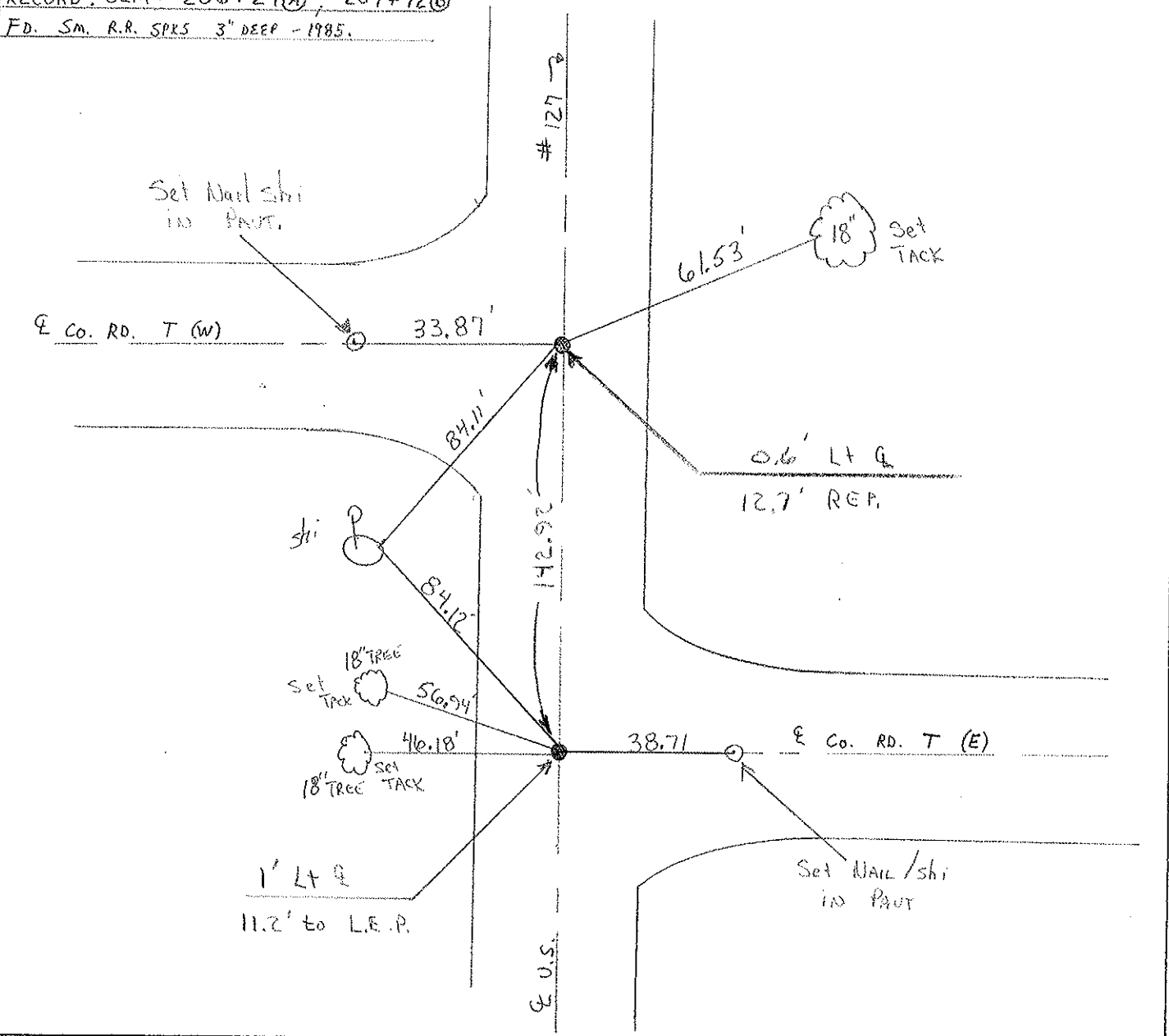
S.L.M. 207+00 208+43

12	7
13	18



RECORD: SLM = 206+29(A), 207+72(B)

FD. Sm. R.R. SPTS 3" DEEP - 1985.



O.D.O.T. DISTRICT 2 SURVEY OFFICE

PERSONNEL

REFERENCE NO. 3

SHEET 4 OF

NOTES 1. Stone

H.C. D. Curtis

R.C. R. Michalak

J. Hauscholder

DATE 2 Oct. 85

WEATHER Cool

TEMP. 59°

ROUTE US #127

COUNTY Fulton

TOWNSHIP Goehon

SECTION 7-12-13-18

T R

TYPE MONUMENT Small RR Spks.

ON SURFACE - BELOW Surface

LEFT - \odot PAW'T. - RIGHT

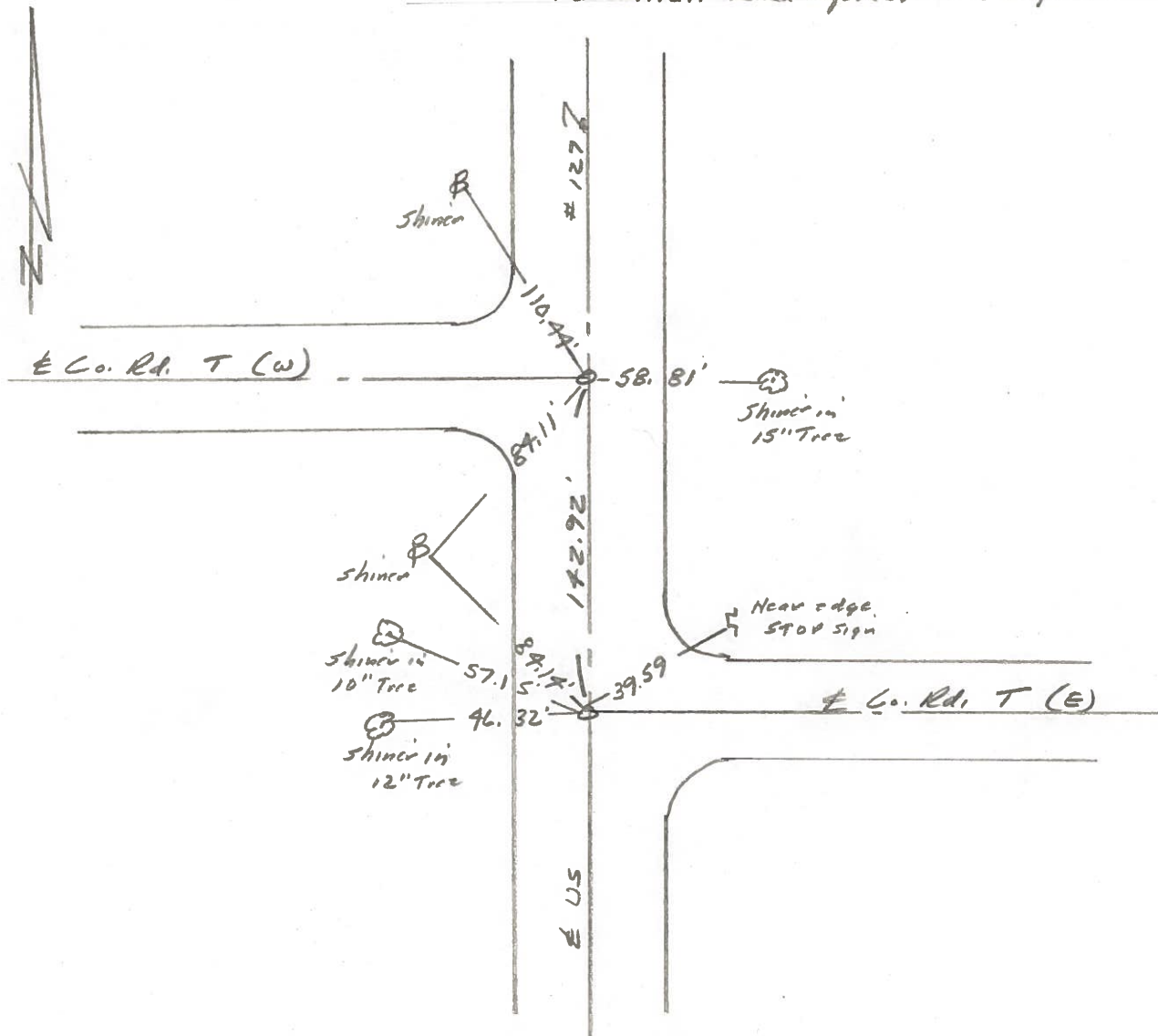
 TO EDGE PAVEMENT

S.L.M. \odot = 206+29 , \odot = 207+72

12	7
13	18



Fd. Small R.R. Spks. 3" Deep - 12-13-85



County Fulton US # 127

Date 26 June 79

Township Gocharm

Weather Warm

Section 18

Temp. 77°

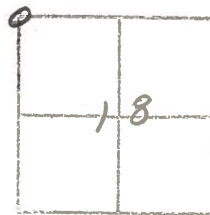
T N, R E

Personnel 1. Stone

R. Michalak

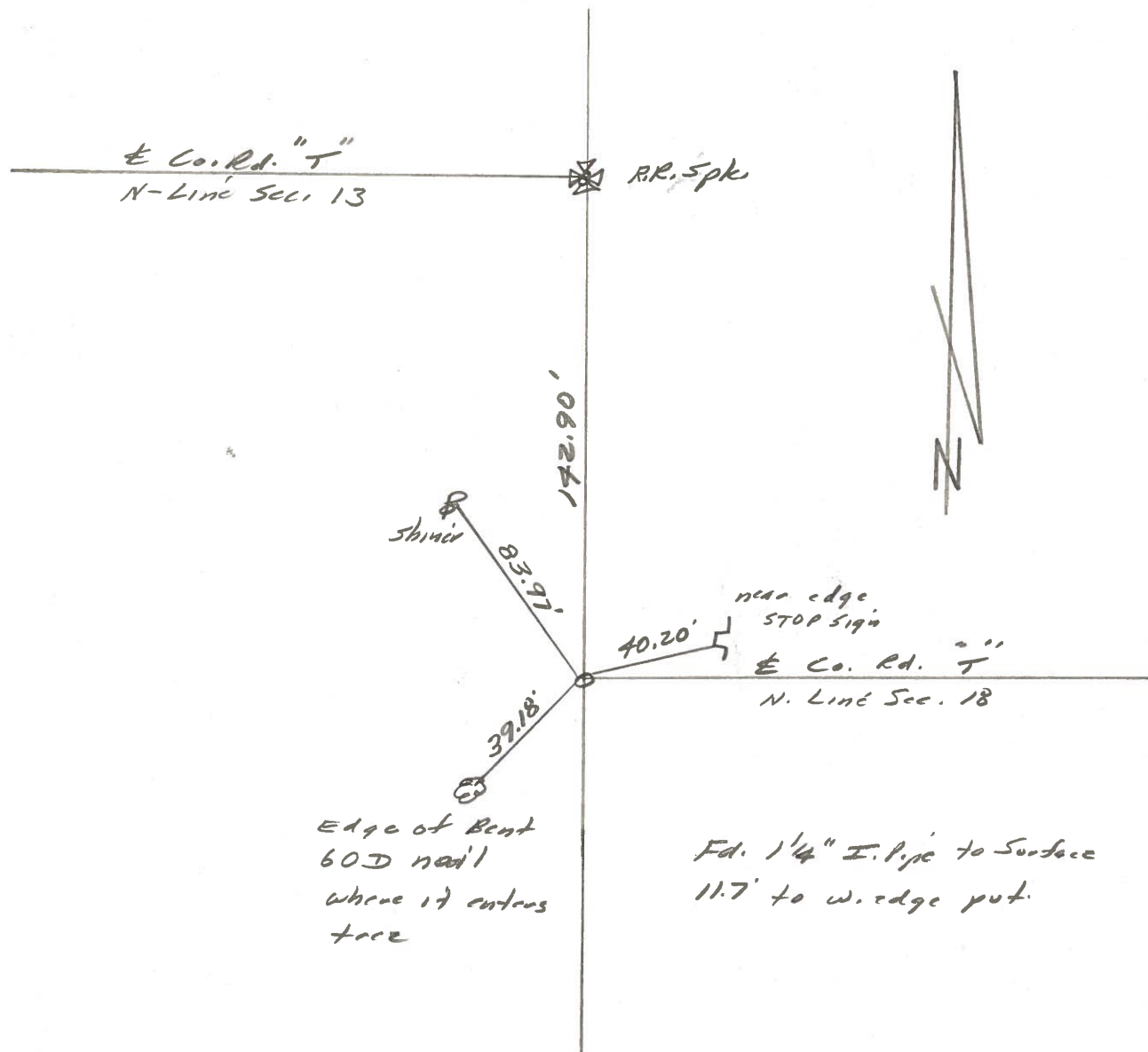
D. Curtis

D. Granata



REF. No. 3

SLM BLKTOP STA. 204100



PERSONNEL TITLE PERSONNEL TITLE

Red Beach

COUNTY Fulton

DATE 15 Aug 74

W. Krape

S. R. US 127

WEATHER _____

D. Boyle

SEC. Gorham Twp.

TEMP _____

J. Bagdonas

DESCRIPTION

CONTROL POINTS

JOB NO. _____

3

ctr. Pavt. Co Rd "T"

60-d spk WSW/S
22" Maple

Found
shiner

7" Norway Maple
ctr. @ 90°

7" Norway Maple
ctr. @ 90°

60-d spk NNW/S
15" Elm

60-d spk. SE/S
8" chinese Elm

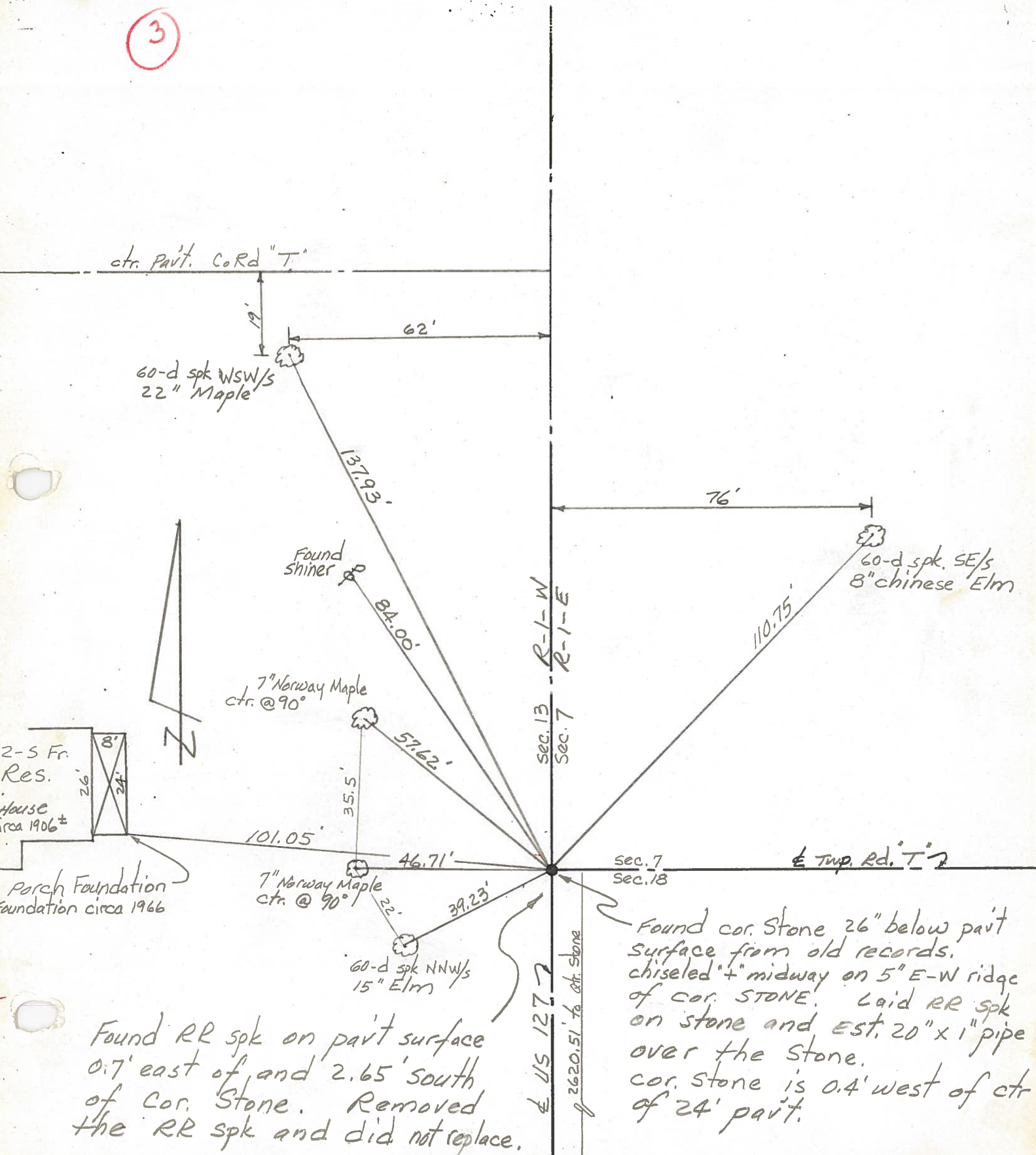
2-5 Fr.
Res.

House
circa 1906±

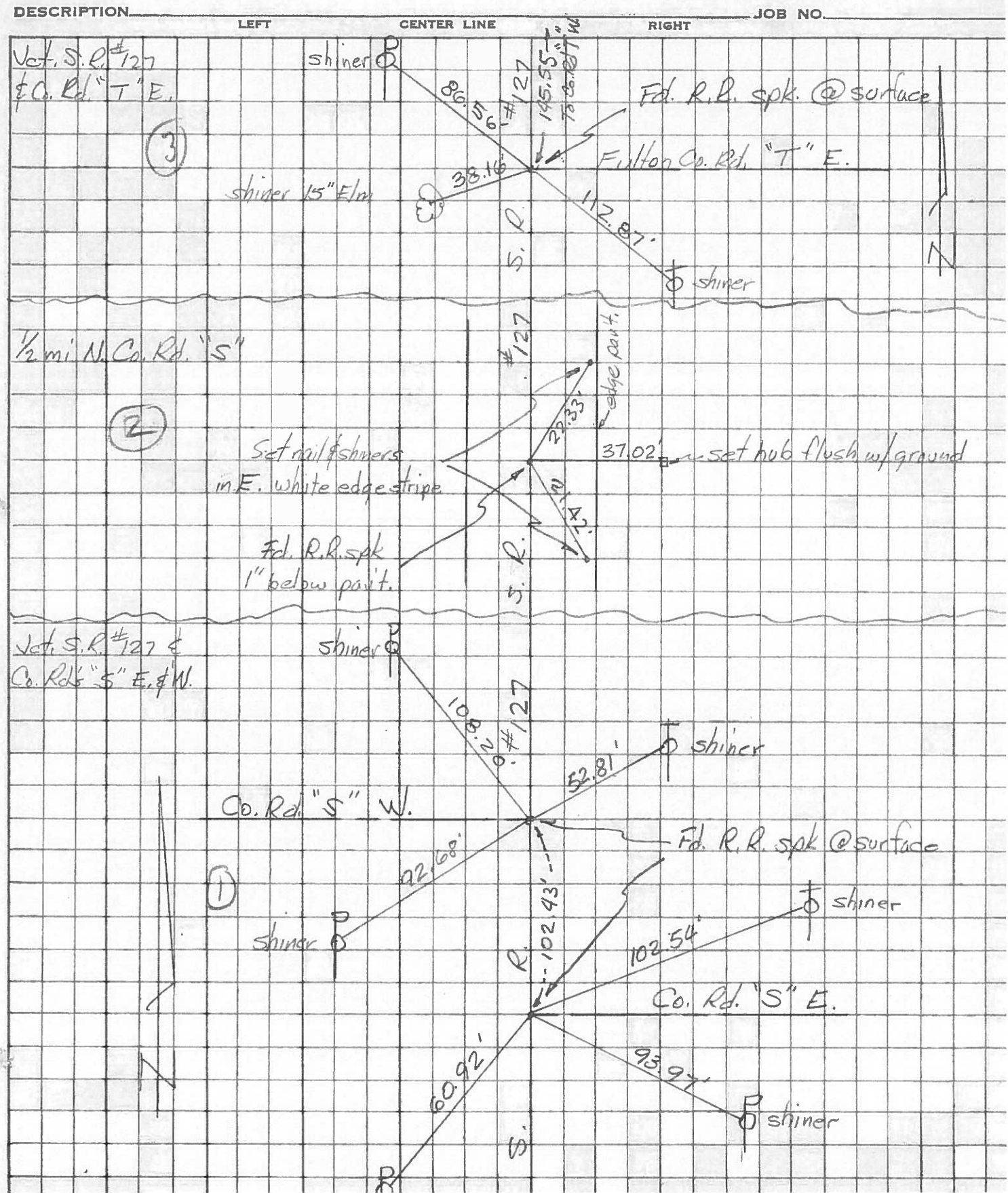
Porch Foundation
foundation circa 1966

Found RR spk on pavt surface
0.7' east of, and 2.65' south
of cor. Stone. Removed
the RR spk and did not replace.

Found cor. Stone 26" below pavt
surface from old records.
chiseled "+" midway on 5" E-W ridge
of cor. STONE. Laid RR spk
on stone and est. 20" x 1" pipe
over the stone.
cor. stone is 0.4' west of ctr
of 24' pavt.



PERSONNEL	TITLE	PERSONNEL	TITLE	COUNTY	DATE	WEATHER	TEMP.
Tomsic				Fulton	AUG, 27, 1913		
Granata				S. R. 127			
Vanyo				SEC.			
Boyle							



PERSONNEL TITLE PERSONNEL TITLE

COUNTY Fulton

DATE July 6, 1966

Danna

Curtis

Granata

Omey

S. R. 127

WEATHER Sunny

SEC. _____

TEMP. 85°

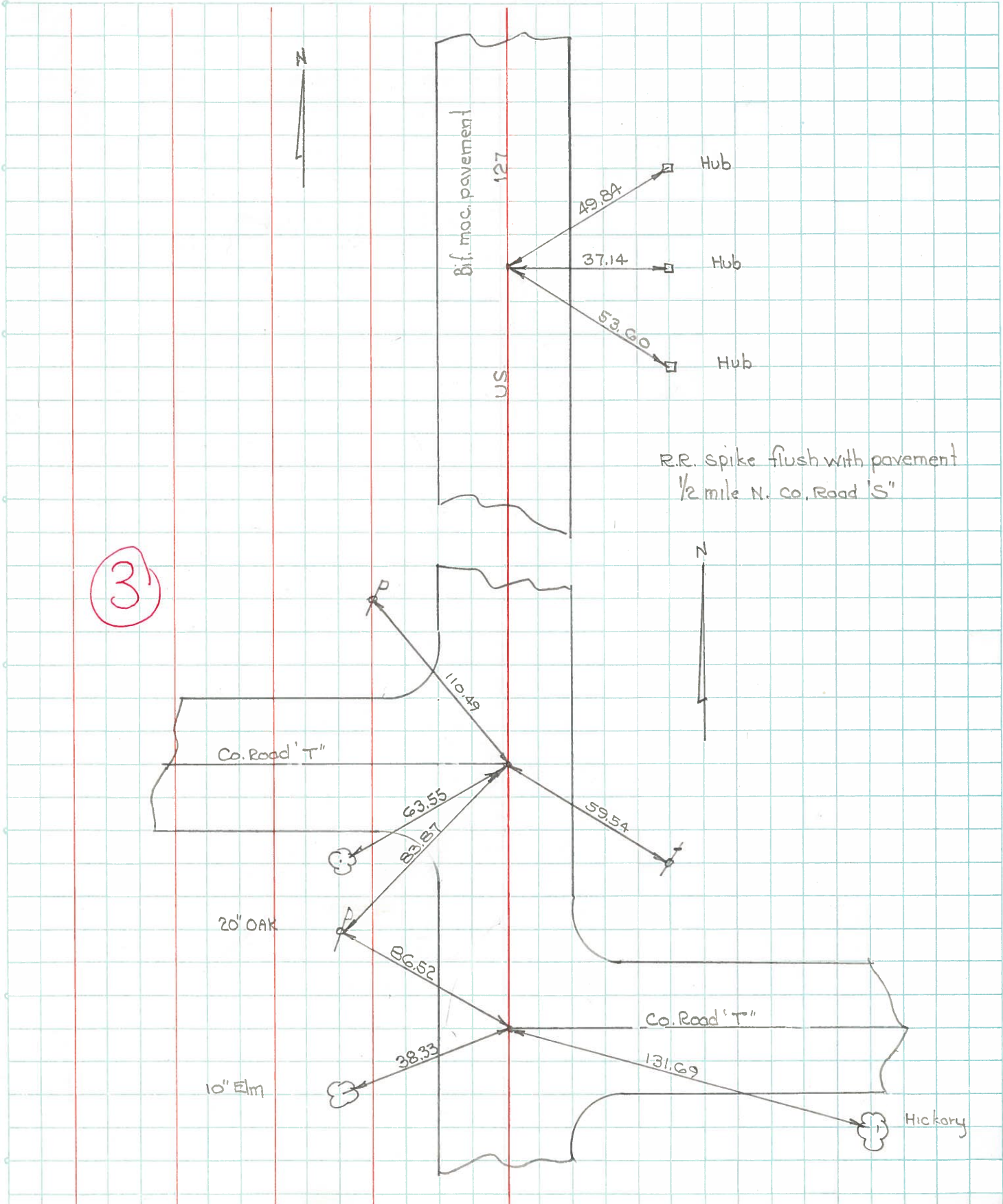
DESCRIPTION Monument Ref us 127

JOB NO. _____

LEFT

CENTER LINE

RIGHT



PERSONNEL	TITLE	PERSONNEL	TITLE	COUNTY	DATE	S. R. #	WEATHER	TEMP.
Burnside				Fulton	8-20-65	127	Clear	+75°
Smith								
Ketcham								

DESCRIPTION	LEFT	CENTER LINE	RIGHT	JOB NO.
-------------	------	-------------	-------	---------

