

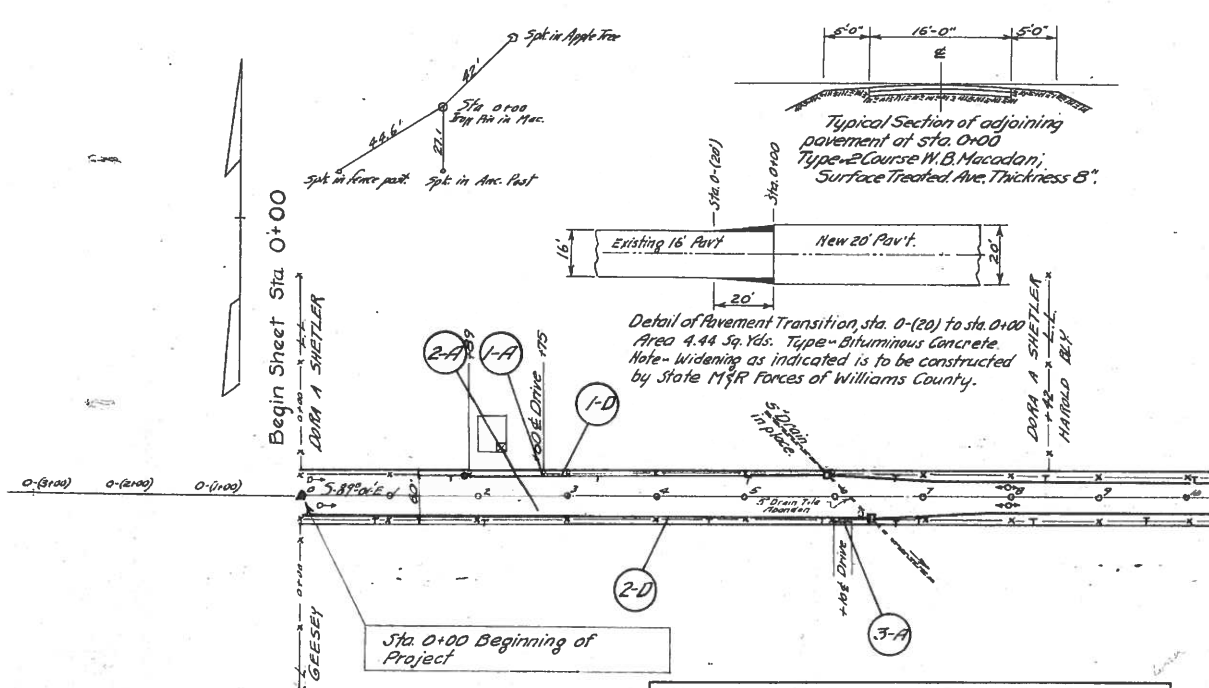
FED AID DIST. No.	STATE	FED AID PROJECT	FISCAL YEAR
10	OHIO		1934

S.H. (ICK) 303 SEC. 24 (PART.)
FULTON COUNTY

4
24

ROADWAY DRAINAGE "D"

Ref. No.	Station		Rt. or Lt.	Drain Tile Sec. M-6.7(b) - Lin. Ft.			R.C.P. - Lin. Ft. Sec. M 6.6 (b)			Special side Ditch Inlets Each	Sty. No. 2 Catch Basins Each	Remarks
	From	To		6"	8"	10"	6"	8"	10"			
1-D	1+88	5+89	Lt.	379			21			1	Inlet sta 1+88 R.C.P. at drive sta 2+00	
2-D	0+00	6+39	Rt.	618			21			1	R.C.P. at drive sta 6+10	
3-D	5+89	20+85	Lt.		1481		21			1	C.B. sta 5+90; Inlet sta 14+20; R.C.P. at drive sta 18+05	
4-D	6+39	20+95	Rt.		1429		21			1	C.B. sta 6+40; Inlet sta 18+00; R.C.P. at drive sta 18+15	
5-D	20+97	26+20	Lt.						42		R.C.P. at Drive sta 24+57 and 25+50	
6-D	20+97	31+00	Rt.		999					2	Inlets sta 30+99 and sta. 26+00	
7-D	26+60	31+00	Lt.	440								
TOTALS				1437	3909	4811	42	42	42	6	2	



TREE REMOVALS

Station	Kind	Location
24+08	B ^o Plum	17.5' L.
24+59	B ^o Cherry	17.5' L.
TOTAL 2 TREES		

PRIVATE DRIVE, ROAD AND MAIL BOX APPROACHES "A"

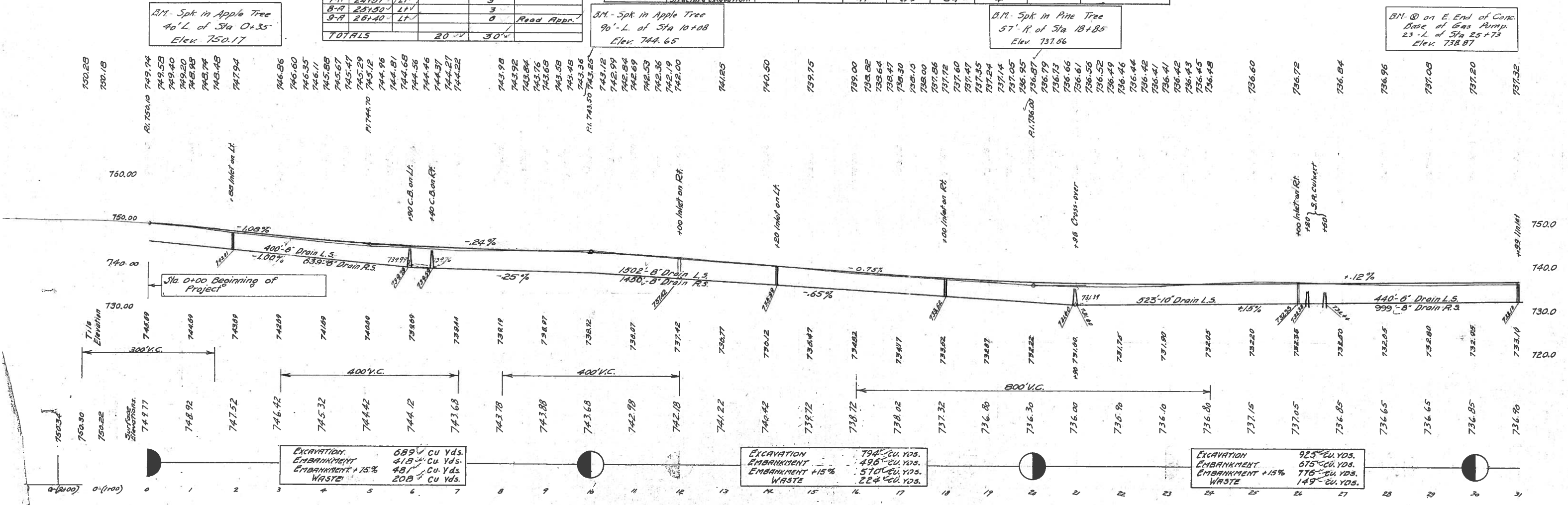
Ref. No.	Station	Rt. or Lt.	Place 12' Cor. M.P. Lin. Ft.	Aggregate Cu. Yds.	Remarks
1-A	2+60	Lt.		3	
2-A	2+40	Rt.		3	Mail Box Appr.
3-A	6+10	Rt.	20	3	
4-A	18+05	Lt.		3	
5-A	18+50	Lt.		3	Mail Box Appr.
6-A	18+18	Rt.		3	
7-A	24+57	Lt.		3	
8-A	25+50	Lt.		3	
9-A	26+40	Lt.		0	Road Appr.
TOTALS				20	30

STRUCTURES UNDER 20 FT SPAN "C"

Ref. No.	Station	Removals			New Work		Structure Excavation Cu. Yds.	R.C.P. (D) Sec. M-6.6 Lin. Ft.	Sty. No. 2 Catch Basin Each	Remarks	
		Type	Size	Lin. Ft.	Type	Size					
1-C	20+96	12" x 8" Pipe	3'	3'	Rein. Cul.	18" x 54"	25	54	2	See detail, sheet 19	
2-C	20+40	12" x 8" Pipe	3'	3'	Rein. Cul.	12" x 36"	16	36	2	See detail, sheet 19	
TOTALS							41	30	54	4	

PIPE REMOVALS "R"

Ref. No.	Station	PIPE - LIN. FT.
1-R	14+18 to 15+18	10" 15'
2-R	21+00	30"
TOTAL		106' 30"



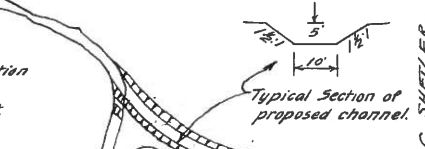
Begin Sheet Sta. 0+00
End Sheet Sta. 31+00
JOHN W. GEESEY

FED. AID DIST. No.	STATE	FED. AID PROJECT	FISCAL YEAR
10	OHIO		1934

5
24

Ref No	Station		Rt or Lt	Drain Tile Sec. M-6.7(B) Lin. Ft.	R.C.P. Lin. Ft.		R.C.P. Lin. Ft.		C.C.M.P. Lin. Ft.		Special side Ditch Inlets Each	Remarks
	From	To			Sec. M-6.6(B)	Sec. M-6.5	Sec. M-6.4	Sec. M-6.4				
1-D	31+00	44+99	Lt	1349	6"	8"	12"	15"	15"	18"		Omit 50 lin. ft. drain on B.S. sta. 36+00 to sta. 36+50
2-D	31+00	44+99	Rt	1326								R.C.P. at Dr. Sta. 38+58 Inlet sta. 38+40
3-D	45+00		Lt				180'		10'			Corr. M.P. at outlet end
4-D	45+01	57+81	Lt	1185								R.C.P. at Dr. Sta. 51+88 Inlet sta. 50+50 & 57+60
5-D	45+01	53+01	Rt	727								R.C.P. at Dr. Sta. 47+10 Inlet sta. 47+00
6-D	57+81	59+42	Lt		180'							R.C.P. at Dr. Sta. 57+72
7-D	53+01	59+42	Rt		64'							
8-D	59+42		Lt					134'	10'			Corr. M.P. at outlet end
9-D	59+44	61+50	Rt	206								
10-D	32+75	33+11	Rt				36'					Place pipe to gradient of Rd. ditch to protect trees on Rt. of sta. 32+89
TOTALS				4793	80'	63'	21'	216'	134'	10'	4'	

Note: To left of sta. 159+75 excavate 185 lin. ft. of new channel as indicated. The material resulting from channel excavation is to be used to build dams in the abandoned channel at the ends of the proposed work. The placing of material to build dams and to fill abandoned channel is included in the price bid per cu. yd. for channel excavation. New channel is to be excavated to elev. 711.00. Total channel excavation - typical section as shown with end area of 87 sq. ft. calculated for distance of 155 Lin. Ft. $87 \times 155 = 13485 = 500$ cu. yds.



Ref No	Station	Rt or Lt	Place 12" Cor. M.P. Aggregate Lin. Ft.	Cu. Yds.	Remarks
1-A	38+00	Lt	3	3	Mail Box App.
2-A	38+58	Rt	3	3	
3-A	46+50	Lt	3	3	Mail Box App.
4-A	47+10	Rt	3	3	
5-A	51+66	Lt	3	3	
6-A	57+72	Lt	3	3	
7-A	61+00	Lt	3	3	Mail Box App.
8-A	61+85	Rt	3	3	
TOTAL			24	24	

Ref No	Station	Removals		New Work		Structure Excavation Cu. Yds.	R.C.P. (B) Sec. M-6.6 Lin. Ft.		S.P. (M)-2 Catch Basin Each	Remarks
		Type	Size	Type	Size		12"	15"		
3-C	45+00	Corr. M.P.	12" x 28"	Rdwy. Cul.	12" x 54"	32	54	2		See detail, sheet 19
4-C	59+43	Corr. M.P.	14" x 32"	Rdwy. Cul.	15" x 54"	36	54	2		See detail, sheet 19
TOTAL						68	54	4		

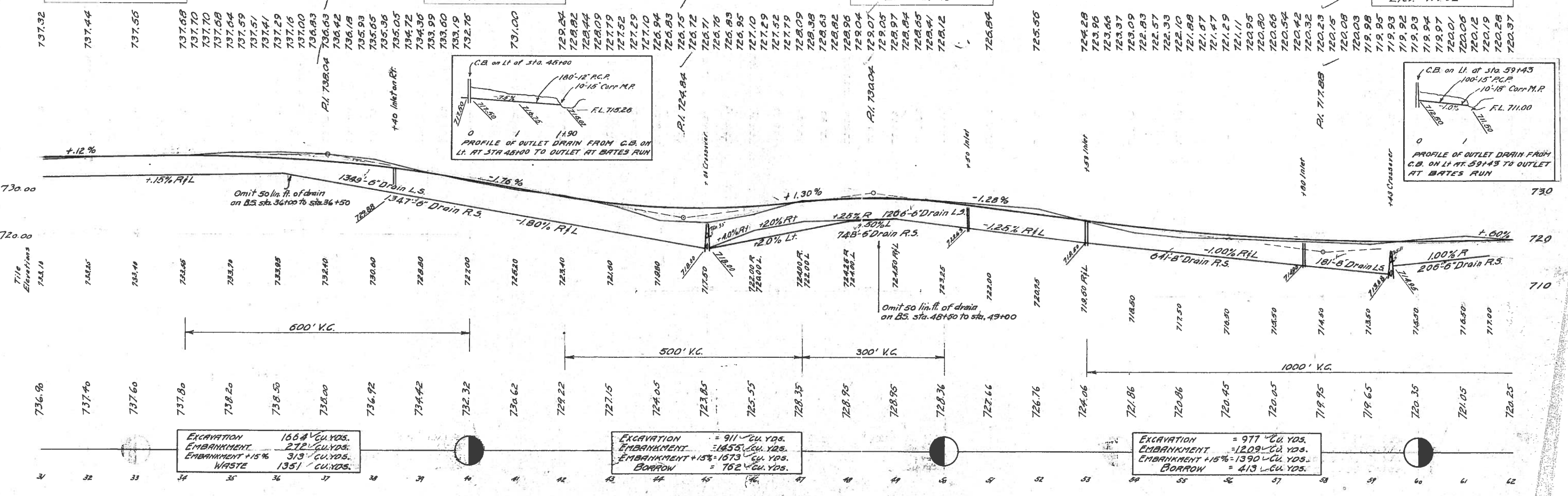
Station	Kind	Location
44+13	10" Walnut	135' R
42+40	10" Maple	17' R
43+80	10" Walnut	135' R
46+46	10" Walnut	26' L
46+69	15" Mulberry	205' R
52+06	15" Walnut	20' R
47+55	10" Walnut	17' R
TOTALS	7 Trees	

B.M. - Spt in 30" Maple
34' R, Sta 31+36
Elev 737.38

B.M. - Put NE cor. board of
Curb, 125' R, Sta 39+66
Elev 733.92

B.M. - Spt in 30" Oak Tree
100' L of Sta 48+95
Elev 727.98

B.M. - Spt in 18" Walnut
Tree 150' L of Sta 59+90
Elev 719.82



EXCAVATION = 1664 Cu. Yds.
EMBANKMENT = 272 Cu. Yds.
EMBANKMENT +15% = 313 Cu. Yds.
WASTE = 1351 Cu. Yds.

EXCAVATION = 911 Cu. Yds.
EMBANKMENT = 1655 Cu. Yds.
EMBANKMENT +15% = 1903 Cu. Yds.
BORROW = 162 Cu. Yds.

EXCAVATION = 977 Cu. Yds.
EMBANKMENT = 1209 Cu. Yds.
EMBANKMENT +15% = 1390 Cu. Yds.
BORROW = 413 Cu. Yds.

JOHN W. GREESEY
JOHN C. & MINNIE I. GREESEY

MILTON C. SHETLER
CHARLES TAYLOR ET AL.

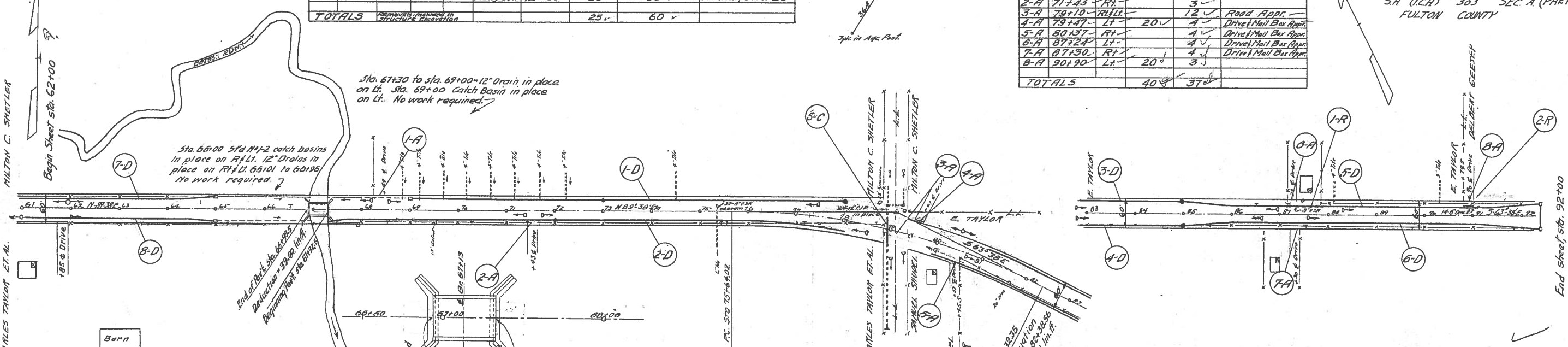
STRUCTURES UNDER 20-FT. SPAN "C"						
Ref No	Station	Removals		New Work		Remarks
		Type	Size	Type	Size	
5-C	78+89	Drain Tile	12" 60'	Rowdy Cul.	12" x 60'	See detail, sheet 20
TOTALS						

PRIVATE DRIVE, ROAD, MAIL BOX APPROACHES "A"					
Ref No	Station	Rt or Lt	Place		Remarks
			14" Conc. R.P. Lin. Ft.	Aggregate Cu. Yds.	
1-A	68+49	Lt		3	
2-A	71+43	Rt		3	
3-A	79+10	Rt	20	4	Road Appr.
4-A	79+47	Lt		4	Drive/Mail Box Appr.
5-A	80+37	Lt		4	Drive/Mail Box Appr.
6-A	87+24	Lt		4	Drive/Mail Box Appr.
7-A	87+30	Rt		4	Drive/Mail Box Appr.
8-A	90+90	Lt	20	3	
TOTALS			40	37	

FED AID DIST. NO	STATE	FED AID PROJECT	FISCAL YEAR
10	OHIO	303	1934

5th (I.C.H.) 303 SEC. A (PART)
FULTON COUNTY

6
24



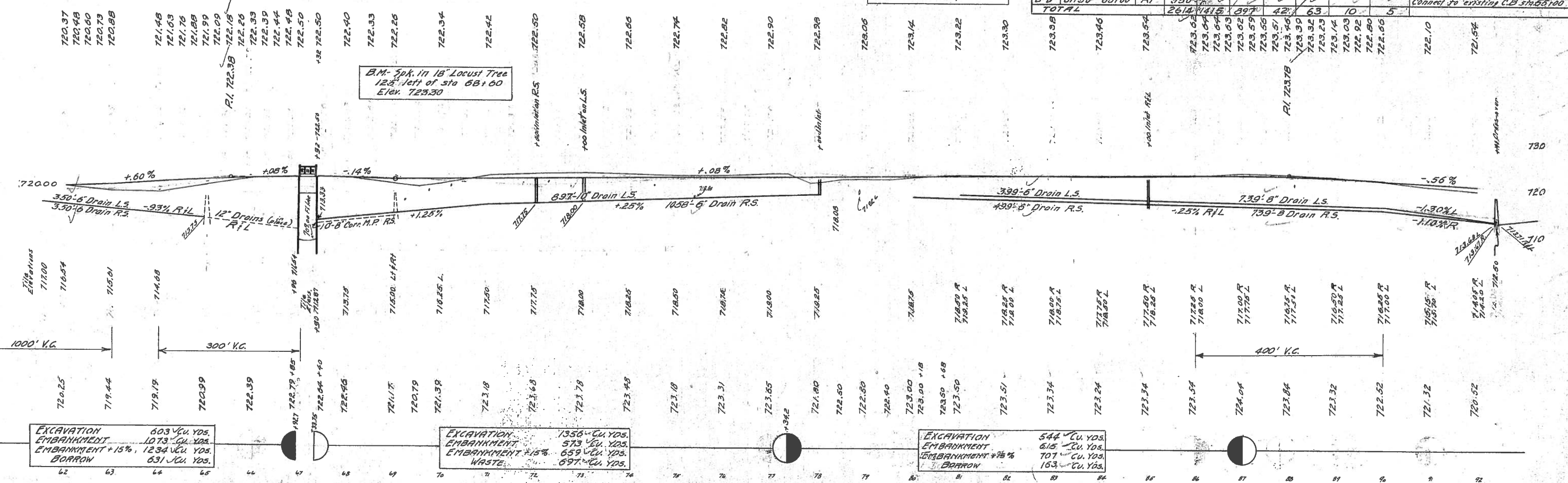
TREE REMOVALS		
Station	Kind	Location
69+50	15' Walnut	24' Rt
80+14	10' Pine	13' Rt
81+70	20' Elm	21' Rt
TOTAL	3 TREES	

DATA ON EXISTING STRUCTURE
Br. N° FU-205-12
Constructed 1931-32
Type: Super-Concrete Beam
Sub 3in. Concrete Abutts.
Span 36 ft. Rowdy 24 ft.
Slew None H=18'
Wear Sur 4" Concrete
Work required on Structure-None
NOTE-Reduction in Pavement Length,
Sta. 66+93.5 to Sta. 67+32.5 = 39.00 Lin. Ft.

PIPE REMOVALS "R"		
Ref. No.	Station	Pipe Lin. Ft.
1-R	87+24 to 87+30	70
2-R	90+90	14
TOTAL		84

See Curve Table
Sheet N° 11
Δ = 26° 44'
D = 490'
E = 39.88'
T = 340.38'
L = 668.33'
R = 1732.39'
P.C. Sta. 75+44.02
P.T. Sta. 82+32.35

ROADWAY DRAINAGE "D"									
From	To	Rt or Lt	Drain Tile		R.C.P. Lin. Ft.		Corr. M.P. Sec. M.B. (B)	Special Side Ditch Inlets	Remarks
			6" B	10" B	6" B	8" B			
1-D	69+00	78+01	Lt	6"	897'		10	2	Inlets Sta. 72+00, Make Conn. at 69+00
2-D	67+90	78+00	Rt	10"				1	Inlet Sta. 72+00 R.C.P. Dr. Sta. 71+43 to 72+00
3-D	81+00	85+01	Lt	6"	399'			1	Inlet Sta. 85+00
4-D	80+00	85+01	Rt	6"	478'			1	Inlet Sta. 85+00 R.C.P. Dr. Sta. 80+50
5-D	85+01	92+40	Lt	6"	697'			1	R.C.P. of Dr. Sta. 87+24 to 90+90
6-D	85+01	92+40	Rt	6"	718'			1	R.C.P. of Dr. Sta. 87+24 to 90+90
7-D	61+50	65+00	Lt	6"	350'				Connect to existing C.B. Sta. 65+00
8-D	61+50	65+00	Rt	6"	350'				Connect to existing C.B. Sta. 65+00
TOTAL					2614	1418	397'	42	63



EXCAVATION 603 Cu. Yds.
EMBANKMENT 1073 Cu. Yds.
EMBANKMENT +15% 1234 Cu. Yds.
BORROW 631 Cu. Yds.

EXCAVATION 1356 Cu. Yds.
EMBANKMENT 573 Cu. Yds.
EMBANKMENT +15% 659 Cu. Yds.
WASTE 697 Cu. Yds.

EXCAVATION 544 Cu. Yds.
EMBANKMENT 615 Cu. Yds.
EMBANKMENT +15% 707 Cu. Yds.
BORROW 163 Cu. Yds.

ROADWAY DRAINAGE "D"

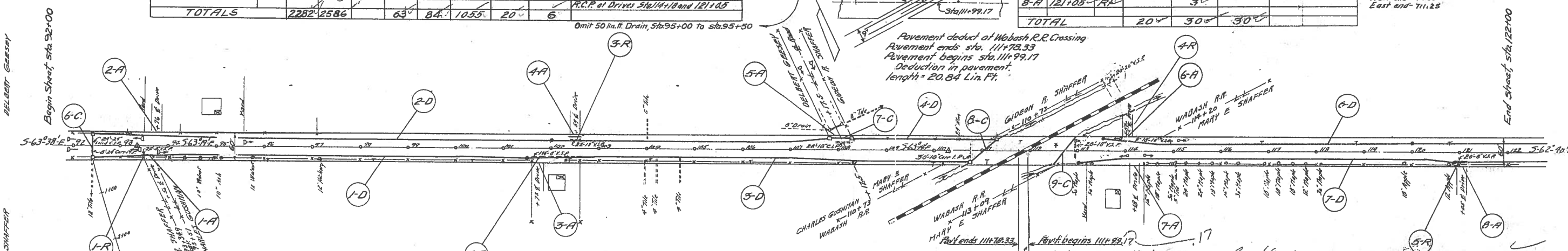
Ref No	Station	Rt or Lt	Drain Tile Sec. M or L	Lin. Ft.	R.C.P. Lin. Ft.	12" R.C.P. Sec. M or L	15" R.C.P. Sec. M or L	Special Slope Inlets	Remarks	
1-D	92+42	101+49	Rt	836	21			1	Omit 50 lin. ft. Drain, sta. 95+00 to sta. 95+50	
2-D	92+42	101+42	Lt	1446	42			1	R.C.P. at Drives sta. 101+75 and 102+59; Inlet 102+00	
3-D	101+49	110+77	Rt		21			1	Inlet sta. 101+50; R.C.P. at Drive sta. 101+75	
4-D	108+26	111+29	Lt	905		303		1		
5-D	92+41	113+50	Rt		21	752	20	2	Carve M.P. at outlet end	
6-D	113+50	122+00	Lt	826				2	Inlet sta. 113+00; R.C.P. at Drive sta. 114+07; Inlet 120+00	
7-D	113+00	122+00	Rt	855		42		2	Inlets sta. 113+00 and 120+00	
TOTALS				2282	2586	63	84	1055	20	6

PRIVATE DRIVES, ROAD, MAILBOX APPROACHES "A"

Ref No	Station	Rt or Lt	Place	18" Pipe Relaid	Remarks
1-A	93+50	Rt	Aggregate	3	
2-A	93+70	Lt	Aggregate	4	Drive & Mail Box Appro.
3-A	101+75	Rt	Aggregate	4	Drive & Mail Box Appro.
4-A	102+59	Lt	Aggregate	3	
5-A	108+17	Lt	Aggregate	0	Road Appro.
6-A	114+07	Lt	Aggregate	3	Pipe to be placed at following elevations: West end- 711.50 East end- 711.25
7-A	114+18	Rt	Aggregate	4	Drive & Mail Box Appro.
8-A	121+05	Rt	Aggregate	3	
TOTAL				20	30

FED. AID DIST. NO.	STATE	FED. AID PROJECT	FISCAL YEAR
10	OHIO	303	1934

S.H. (I.C.A.) 303 SEC. A(PART)
FULTON COUNTY



STRUCTURES UNDER 20FT SPAN "C"

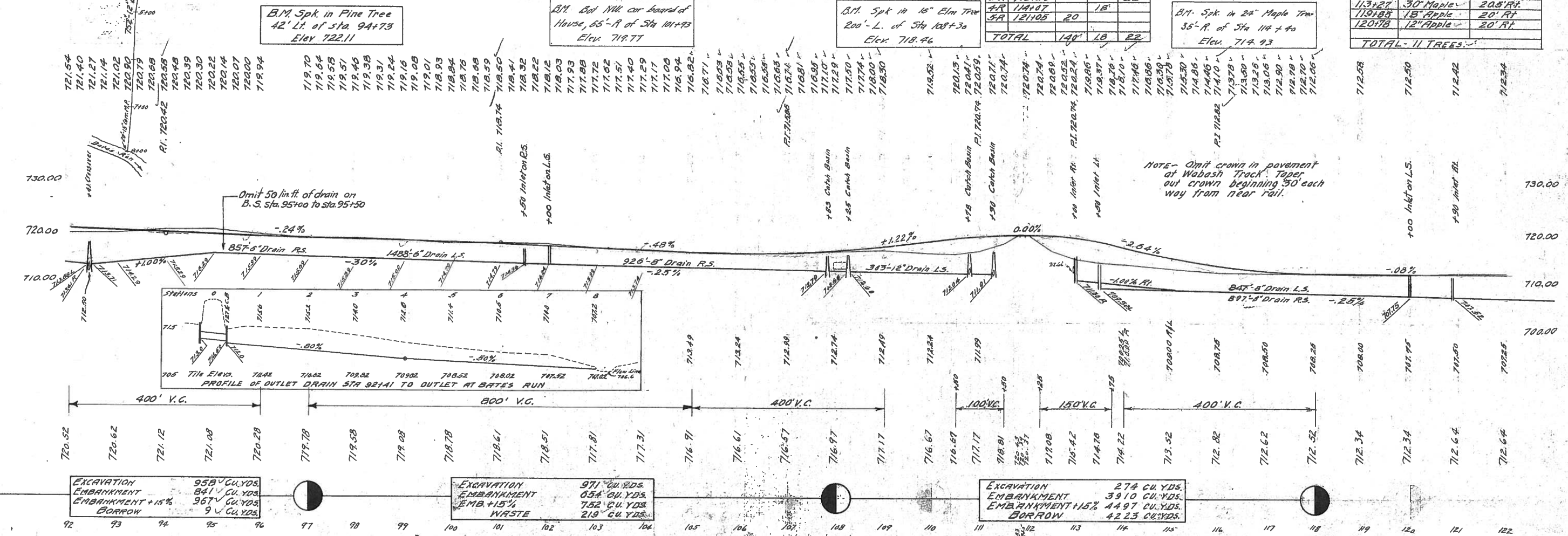
Ref No	Station	Removals		New Work		Structure Excavation Cu. Yds.	Channel Excavation Cu. Yds.	18" R.C.P. Sec. M-6-0 Lin. Ft.	18" C.I.P. Relaid Lin. Ft.	18" Cor. M.P. Relaid Lin. Ft.	Catch Basins			Remarks
		Type	Size	Type	Size						Sta. M-2	Sta. M-2-2	Sta. M-2-3	
6-C	92+41	Side Rd. Cul.	18x28	Side Rd. Cul.	18x52	41		52			2	2	2	See detail, sheet 20
7-C	108+125	C.I.P.	18x28	Side Rd. Cul.	18x40	23		12	28					See detail, sheet 20
8-C	111+03	Cor. M.P.	18x30	Roady Cul.	18x76	50	50	76		30				See detail, sheet 21
9-C	112+72	V.S.P.	18x28	Roady Cul.	18x76	37	37	76						See detail, sheet 21
TOTALS						151	87	216	28	30	2	2	2	

PIPE REMOVALS "A"

Ref No	Station	Pipe - Lin. Ft.			
		8"	10"	18"	
1-R	93+50	20			
2-R	101+75	100			
3-R	102+59			22	
4-R	114+07			18	
5-R	121+05	20			
TOTAL			140	18	22

TREE REMOVALS

Station	Kind	Location
94+34	8" Walnut	19' Rt.
94+66	10" Walnut	20' Rt.
94+97	8" Walnut	20' Rt.
95+09	10" Ash	19' Rt.
95+23	12" Walnut	20' Rt.
97+15	12" Hickory	21' Rt.
110+49	24" Elm	22.5' Lt.
113+00	30" Maple	21' Rt.
113+27	30" Maple	20.5' Rt.
119+85	18" Apple	20' Rt.
120+78	12" Apple	20' Rt.
TOTAL - 11 TREES		



EXCAVATION	958 CU. YDS.
EMBANKMENT	841 CU. YDS.
EMBANKMENT +15%	967 CU. YDS.
BORROW	9 CU. YDS.

EXCAVATION	971 CU. YDS.
EMBANKMENT	034 CU. YDS.
EMB. +15%	752 CU. YDS.
WASTE	219 CU. YDS.

EXCAVATION	274 CU. YDS.
EMBANKMENT	3910 CU. YDS.
EMBANKMENT +15%	4497 CU. YDS.
BORROW	42.23 CU. YDS.

NOTE - Omit crown in pavement at Wabash Track. Taper out crown beginning 50' each way from near rail.

check this for g'at vt l's

DELOIT GARDNER

G. A. SHAFER

MARY E. SHAFER

MARY E. SHAFER

FED. AID DIST. No.	STATE	FED. AID PROJECT	FISCAL YEAR
10	OHIO	5H 1CH 303	1934
SEC. A(PART) FULTON COUNTY			

TREE REMOVALS		
Station	Kind	Location
125+31	12" Apple	24' Lt.
125+42	10" Locust	24' Lt.
TOTAL 2 TREES ✓		

PRIVATE DRIVE ROAD MAIL BOX APPROACHES "A"				
Ref. No.	Station	Rt. or Lt.	Place	Remarks
1-A	124+54	LT.	Aggregate	Driv. Mail Box App.
2-A	124+75	RT.	Cu. Yds.	Road App.
TOTAL			9	

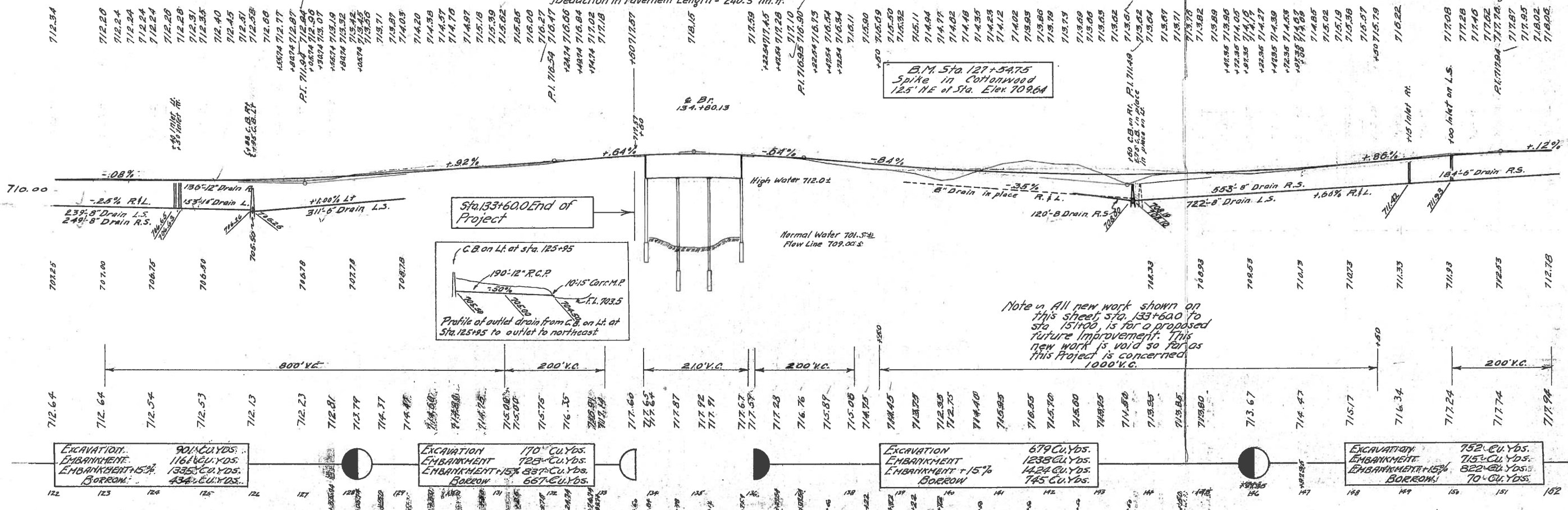
ROADWAY DRAINAGE "D"											
Ref. No.	Station		Drain Tile Sec. M. 67 (D) Lin. Ft.	R.C.P. Lin. Ft. Sec. M. 66 (D)		R.C.P. Lin. Ft. Sec. M. 65		15" Circ. M.P. Sec. M. 64 Lin. Ft.	Special Side Ditch Inlets Each	Remarks	
	From	To		6"	8"	10"	12"				12"
1-D	122+00	124+59	Lt	239							
2-D	122+00	124+10	Rt	249							
3-D	124+39	125+04	Lt		132		21			Inlet sta 124+40 R.O.P. at Dr. 124+54	
4-D	124+49	125+87	Rt			42	94			Inlet sta 124+50 R.C.P. at Rd. 124+75	
5-D	125+89	129+00	Lt	311						Turn M.P. at outlet	
6-D	125+95		Lt			190		10			
TOTALS				311	488	132	21	42	284	10	2

PIPE REMOVALS "R"		
Ref. No.	Station	Pipe Lin. Ft.
1-R	124+54	20
2-R	124+75	36
TOTAL		20

EXTRA PAVEMENT "P"				
Ref. No.	Station	Pavement		
		2" Bituminous Concrete Surface Course Sq. Yds.	4 1/2" W.B. Macadam First Base Course Sq. Yds.	4 1/2" W.B. Macadam Second Base Course Sq. Yds.
1-P	126+55 to 133+60	118.8	118.8	118.8
TOTAL		118.8	118.8	118.8

STRUCTURES UNDER 20 FT. SPAN										
Ref. No.	Station	Removals		New Work		Structure Excavation Cu. Yds.	R.C.P. (D) Sec. M. 66 Lin. Ft.	24" Solid C.P. Ret. Lin. Ft.	S/d. No. 1-2 Catch Basin Each	S/d. No. 2-3 Catch Basin Each
		Type	Size	Type	Size					
10-C	125+95	Concrete	18"	Rein. Cul.	15' x 5'	33	34		2	See detail, sheet No. 22
TOTAL		Removals included in structure excavation.				33	54		2	

DATA ON EXISTING STRUCTURE
 Br. No. FU-205-25
 Constructed - 1931
 Type - Super-3 span Conc. Beam
 Substr. - Concrete
 Span - 3-00' x 180'
 Skew - 30°
 Wear. Sur. - 4" Concrete
 Approach Slabs - 24' Long
 Approach slab begins sta. 133+60
 Approach slab ends sta. 136+00.3
 No work required sta. 133+60 to sta. 136+00.3
 Deduction in Pavement Length = 240.3 lin. ft.



Excavation 90 Cu. Yds.
 Embankment 116 Cu. Yds.
 Embankment + 15% 135 Cu. Yds.
 Borrow 43 Cu. Yds.

Excavation 170 Cu. Yds.
 Embankment 123 Cu. Yds.
 Embankment + 15% 137 Cu. Yds.
 Borrow 667 Cu. Yds.

Excavation 679 Cu. Yds.
 Embankment 1238 Cu. Yds.
 Embankment + 15% 1424 Cu. Yds.
 Borrow 745 Cu. Yds.

Excavation 752 Cu. Yds.
 Embankment 715 Cu. Yds.
 Embankment + 15% 822 Cu. Yds.
 Borrow 70 Cu. Yds.

Note: All new work shown on this sheet, sta. 133+60 to sta. 151+00, is for a proposed future improvement. This new work is void so far as this project is concerned.