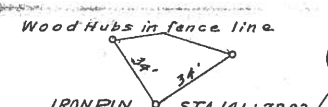


Sta. 136+00.30 Beginning of N.R.S. Project 702-A

PRIVATE DRIVE ROAD, MAIL BOX APPROACHES "A"				
Ref. No.	Station	Rt or Lt	Place	Remarks
1-A	143+00	Lt		Aggregate C.u. Yds.
2-A	149+00	Rt		Aggregate C.u. Yds.
TOTAL				6



U.S. PUBLIC HIGHWAY PROJECT NO. 10 OHIO NR5102-A 1935

FED. AID DIST. NO.	STATE	FED. AID PROJECT	FISCAL YEAR
10	OHIO	NR5102-A	1935

S.H. 148 303 FULTON
SEC. 9 (PART) COUNTY.

ROADWAY DRAINAGE "D"						
Ref. No.	Station	Rt or Lt	Drain Tile Sec. M. 6.7 (Cb)	R.C.P. Lin. Ft. Sec. M. 6.6 (Cb)	Special Side Ditch Inlets Each	Remarks
1-D	142+39	143+59	Rt	72	48	
2-D	143+61	149+16	Rt	508	30	R.C.P. to be under Pav't. Inlet at 149+15-12" R.C.P. at Drive 149+00.
3-D	149+16	151+00	Rt	184		
4-D	143+76	151+00	Lt	708		Plate Conn. Sta. 143+76. Inlet at Sta. 150+00.
TOTALS			184	1288	78	2

PIPE REMOVALS "R"		
Ref. No.	Station	Pipe - Lin. Ft.
1-R	149+30	12"
TOTAL		84

DATA ON EXISTING STRUCTURE
 Br. No. FU-20-S-25
 Constructed 1931
 TYPE Super-3 Span Concrete Beam
 Substr. Concrete
 Span - 3-60' = 180'
 Skew 30° R.F.
 Wearing Sur. 4" Concrete.
 Approach Slabs 24' long.
 Approach slab begins Sta. 135+60
 Approach slab ends Sta. 136+00.3
 No Work required 135+60 to Sta. 136+00.3
 Deduction in pavement length = 240.3

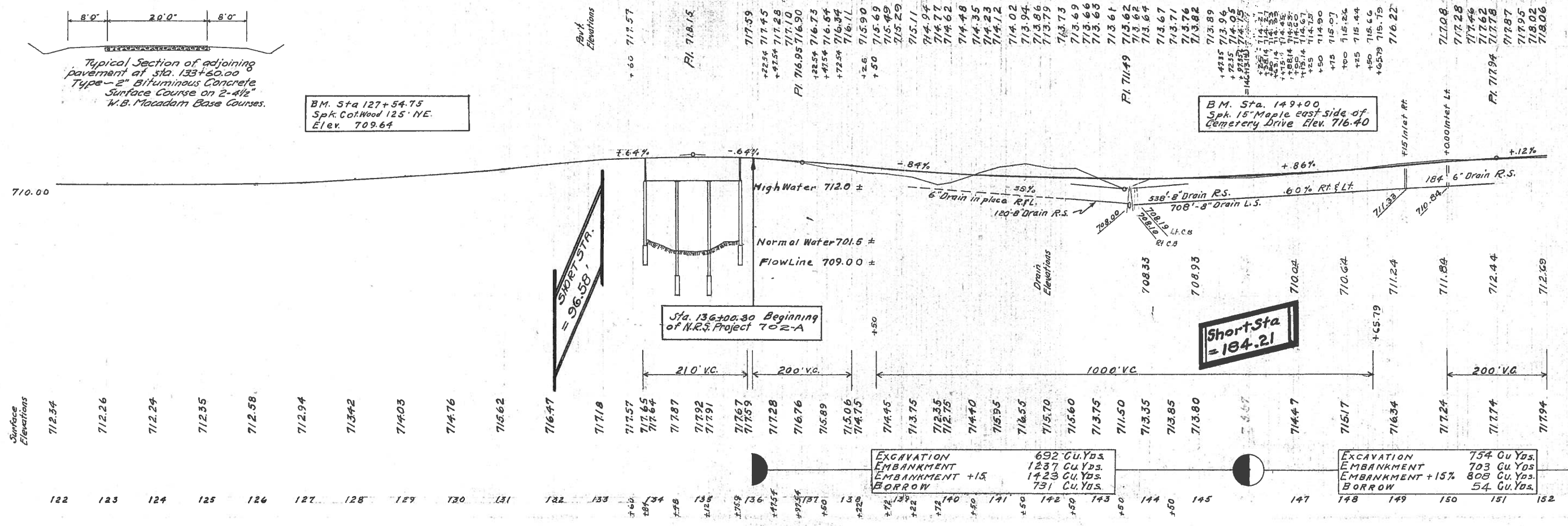
STRUCTURES UNDER 20 FT SPAN "C"						
Ref. No.	Station	Removals		New Work		Remarks
		Type	Size Lin. Ft.	Type	Size	
1-C	143+65	Drain tile	12" x 26'	Cul. EXTN.	24" x 24'	See Detail Sheet No. 17
TOTAL						

TYPE 5G GUARD RAIL "G"			
Ref. No.	Station	Rt or Lt	Lin. Ft.
1-G	130+38.88	Lt	336
2-G	130+48.88	Rt	336
3-G	135+72	Lt	288
4-G	135+88	Rt	304
TOTAL			1264

Typical Section of adjoining pavement at Sta. 133+60.00
 Type - 2" Bituminous Concrete Surface Course on 2-4 1/2" W.B. Macadam Base Courses.

BM. Sta. 127+54.75
 Spk. Col. Wood 125' N.E.
 Elev. 709.64

BM. Sta. 149+00
 Spk. 15" Maple east side of Cemetery Drive Elev. 716.40



EXCAVATION	692 Cu. Yds.	EXCAVATION	754 Cu. Yds.
EMBANKMENT	1237 Cu. Yds.	EMBANKMENT	703 Cu. Yds.
EMBANKMENT +15%	1423 Cu. Yds.	EMBANKMENT +15%	808 Cu. Yds.
BORROW	731 Cu. Yds.	BORROW	54 Cu. Yds.

PIPE REMOVALS "R"		
Ref. No.	Station	Pipe - Lin. Ft.
1-R	153+98 to 154+78	80
TOTALS		80

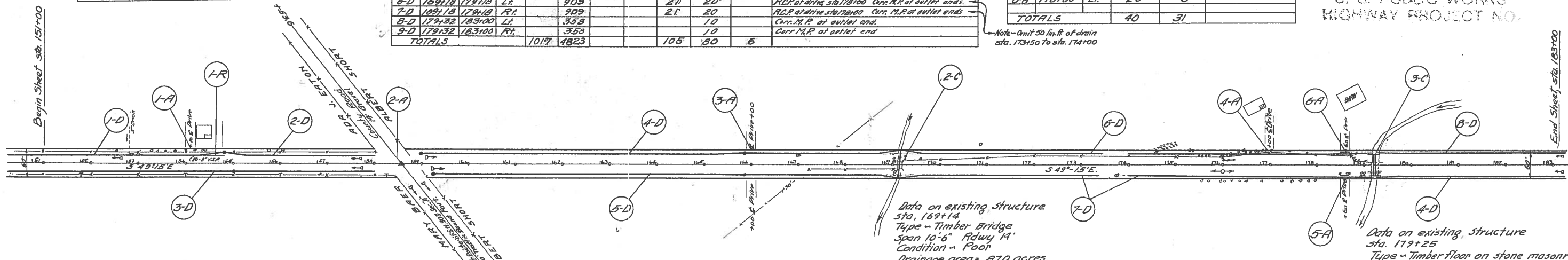
ROADWAY DRAINAGE "D"									
Ref. No.	Station		Rt or Lt	Drain Tile Sec. M-6.7(D) Lin. Ft.		R.O.P. - Lin. Ft. Sec. M-6.6(D)	10" Cur. M.P. Sec. M-6.4 Lin. Ft.	Special Side Ditch Inlets Each	Remarks
	From	To		6"	8"				
1-D	151+00	154+81	Lt		358	21		1	Inlet sta. 154+80; RCP at Drive sta. 154+10
2-D	154+81	158+00	Lt	319					
3-D	151+00	158+00	Rt	698				1	Inlet sta. 155+00
4-D	159+00	169+12	Lt		978	21	10	2	Inlet sta. 169+12; RCP at Drive sta. 169+50
5-D	169+12	169+12	Rt		953	21	10	2	Inlet sta. 169+12; RCP at Drive sta. 169+50
6-D	169+18	179+18	Lt		909	21	20		RCP at drive sta. 179+00; Cur. M.P. at outlet ends
7-D	169+18	179+18	Rt		909	21	20		RCP at drive sta. 179+00; Cur. M.P. at outlet ends
8-D	179+32	183+00	Lt		358		10		Cur. M.P. at outlet end
9-D	179+32	183+00	Rt		358		10		Cur. M.P. at outlet end
TOTALS				1017	4823		105	6	

PRIVATE DRIVE, ROAD, AND MAIL BOX APPROACHES "A"					
Ref. No.	Station	Rt or Lt	Place		Remarks
			12" Cur. M.P. Aggregate Lin. Ft.	Cu. Yds.	
1-A	154+10	Lt		4	Drive/Mail Box Appr.
2-A	158+53.6	Rt/Lt		12	Road Appr.
3-A	166+00	Rt/Lt		6	
4-A	177+00	Lt		3	Mail Box Appr.
5-A	178+60	Rt	20	3	
6-A	178+60	Lt	20	3	
TOTALS			40	31	

FED. AID DIST. NO. 10	STATE OHIO	FED. AID PROJ. NO. NRS 702-A	FISCAL YEAR 1933	5 21
-----------------------	------------	------------------------------	------------------	---------

S.H. 303 SEC. "A" (Part)
FULTON COUNTY

U. S. PUBLIC WORKS
HIGHWAY PROJECT NO.



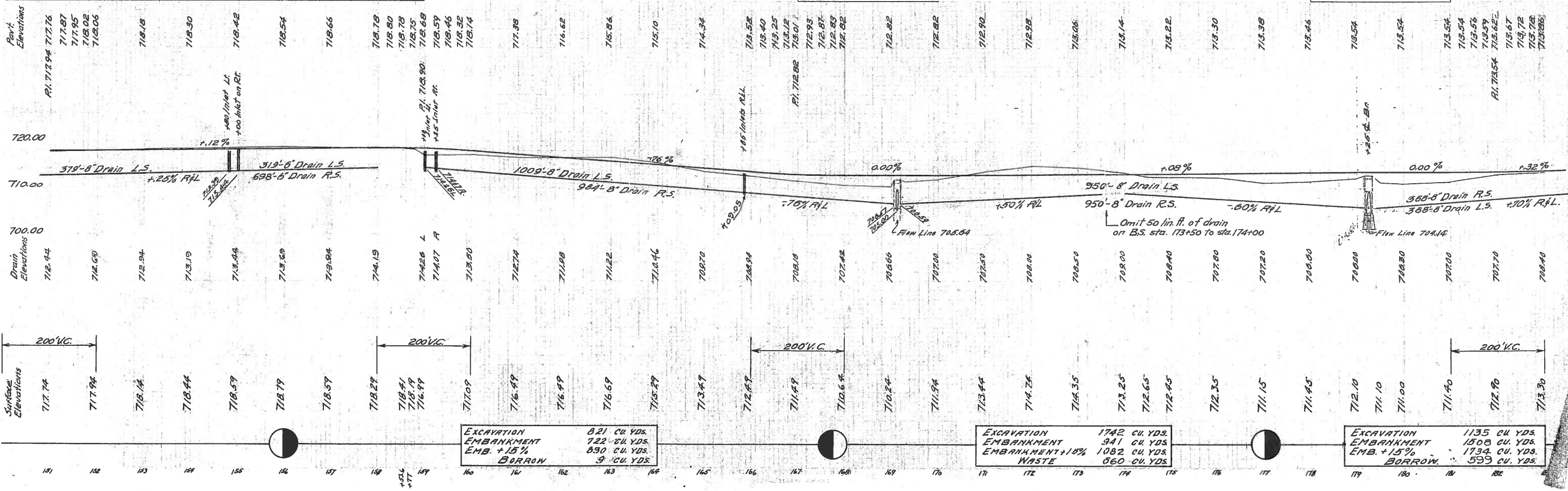
TREE REMOVALS					
Station	Kind	Location	Station	Kind	Location
167+54	15" Ash	18' Lt.	176+16	24' Locust	19' Lt.
169+02	18" Elm	6' Lt.	176+34	12' Locust	25' Lt.
169+02	8" Ash	12' Lt.	176+49	10' Elm	26' Lt.
169+02	12" Elm	22' Lt.	178+52	18' Locust	13' Rt.
169+02	20" Elm	15' Rt.	178+45	54' Locust	21' Rt.
169+24	12" Ash	9' Lt.	177+82	20' Locust	24' Lt.
169+24	8" Ash	14' Lt.	178+84	10' Locust	13' Rt.
169+34	20" Ash	20' Rt.	178+88	10' Locust	14' Rt.
169+58	12" Elm	9' Lt.	178+95	12' Locust	13' Rt.
173+74	24" Elm	20' Rt.	178+99	12' Locust	20' Rt.
175+54	15" Locust	16' Lt.	178+85	12' Locust	20' Lt.
175+72	30" Locust	18' Lt.	178+85	12' Locust	12' Lt.
175+87	12" Locust	17' Lt.	178+75	18' Locust	22' Lt.
Total		26 Trees			

BM Spk in 12" Maple Tree
25' Left Sta. 156+00
Elev. 718.55

BM Spk in 16" Elm Tree
80' Left of Sta. 166+76
Elev. 714.06

BM Spk in 30" Elm Tree
200' R Sta. 178+00
Elev. 712.59

STRUCTURES UNDER 20 FT. SPAN "C"																	
Ref. No.	Station	Removals		New Work		Structure Excavation Cu. Yds.	R.C.P. Sec. M-6.6(B) Lin. Ft.	Removal Existing Structure Lump Sum	Hand Laid Rip-Rap Sq. Yds.	Concrete 1-5/8" Mix Cu. Yds.	Channel Excavation Cu. Yds.	Concrete 1-6 1/2" Mix Cu. Yds.	4 Ft. 3 Ga. Carr. Plate Arch. Sec. M-6.4(b-3) - Lin. Ft.	3" Gal Iron Channel Lin. Ft.	Stone Masonry Cu. Yds.	Remarks	
		Type	Span	Rdwy. Cul.	Rdwy. Cul.												
12-C	169+14	Existing	105' span	Rdwy. Cul.	60' x 60'	13	60										See detail on sheet 18
13-C	179+25	Existing	150' span	Rdwy. Cul.	12' x 45'	87											See detail on sheet 18
TOTALS						100	60	Lump Sum	52	7.70	10	38.2	45	90	28.5		



EXCAVATION 8.21 CU. YDS.
EMBANKMENT 7.22 CU. YDS.
EMB. +15% 8.90 CU. YDS.
BORROW 9 CU. YDS.

EXCAVATION 174.2 CU. YDS.
EMBANKMENT 9.11 CU. YDS.
EMB. +15% 108.2 CU. YDS.
WASTE 86.0 CU. YDS.

EXCAVATION 113.5 CU. YDS.
EMBANKMENT 15.08 CU. YDS.
EMB. +15% 173.4 CU. YDS.
BORROW 59.9 CU. YDS.

R.C. Sta 185+94.25
 P.T. Sta 185+75.92
 $\Delta = 59^{\circ}16'$
 $D = 4^{\circ}0'$
 $T = 511.02'$
 $E = 88.42'$
 $L = 981.57'$
 $R = 1432.39'$

Ref. No.	Station	Removals		New Work		Structure Excavation Cu. Yds.	R.C.P. Sec. M-6.0(a) Lin. Ft.		5 ft. 12" Catch Basins Each	Remarks
		Type	Size	Type	Size		15"	18"		
4-C	195+00.5	18" C.P.	28'	Rdwy Cul.	18x58'	2A	15"	56	2	See details, sheet No. 17
5-C	208+00	24" C.P.	28'	Rdwy Cul.	15x54'	2B	54	56	2	See details, sheet No. 17
TOTALS						52	54	56	4	

Ref. No.	Station	Pipe Lin. Ft.
1-R	212+40	34
TOTAL		34

Ref. No.	Station	Rt. or Lt.	Place	Aggregate Cu. Yds.	14" C.P. Reline Lin. Ft.	Remarks
1-A	193+50	Rt.	10			Road Appr.
2-A	198+56	Rt.	4			Drive/Mail Box Appr.
3-A	198+59	Lt.	3			
4-A	211+26	Rt.	3		24	Pipe from sta. 212+40
5-A	211+26	Lt.	3			
TOTALS			23		24	

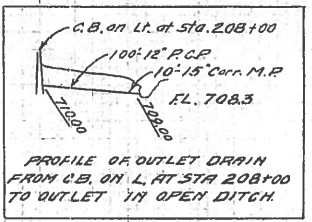
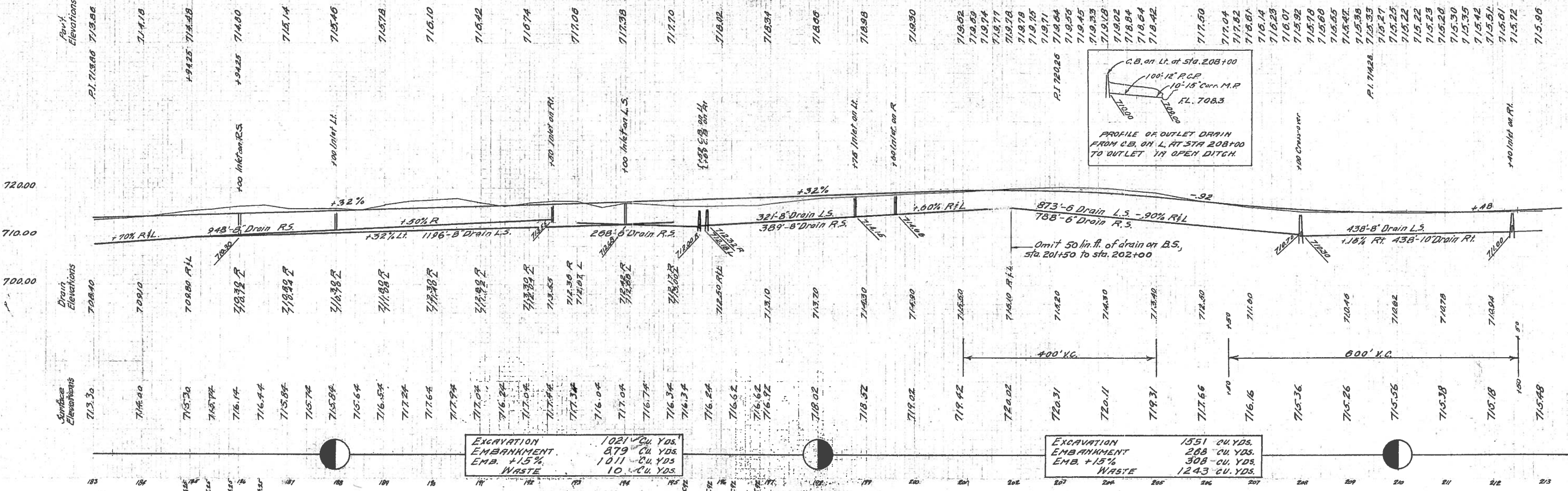
Ref. No.	Station	Rt. or Lt.	Drain Tile		R.C.P. Lin. Ft. Sec. M-6.7(b)	12" C.P. Sec. M-6.5 Lin. Ft.	15" C.P. Sec. M-6.4 Lin. Ft.	Special Side Ditch Inlets Each	5 ft. 12" Catch Basin Each	Remarks	
			6"	10"							
1-D	183+00	Lt.	6"	1196	8"	10"		2		Inlet sta 188+00 @ 184+00	
2-D	183+00	Rt.	6"	948				2		Inlet sb. 184+00 @ 192+50	
3-D	193+00	Rt.		268							
4-D	195+53	Lt.		300	21			1		Inlet sta 198+75 R.C.P. at Sta 199+00	
5-D	195+70	Rt.		368	21			1		Inlet sta 199+00 R.C.P. at Sta 201+50	
6-D	198+76	Lt.		873						Inlet sta 201+50 R.C.P. at Sta 202+00	
7-D	199+61	Rt.		788						Inlet sta 201+50 R.C.P. at Sta 202+00	
8-D	208+00	Lt.				100	10			Cur. M.P. at outlet end.	
9-D	208+01	Rt.		417	21			1		C.B. sta 212+40 R.C.P. at Sta 212+40	
10-D	208+01	Lt.		417	21			1		C.B. sta 212+40 R.C.P. at Sta 212+40	
TOTALS			1929	3229	417	63	21	100	10	6	2

B.M. Spk. in 18" Hickory Tree
 225' L. Sta 183+80
 Elev. 710.75

B.M. Spk. in 36" Elm Tree
 200' L. of sta. 191+50
 Elev. 710.33

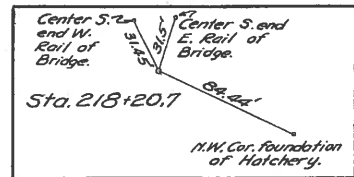
B.M. Spk. N side Wild Cherry
 Tree 40' L. Sta 205+05
 Elev. 719.97

B.M. On letter 'O' in October
 Top W. Wall of Culvert
 80' L. of Sta 211+25
 Elev. 715.25



EXCAVATION 1021 Cu. Yds.
 EMBANKMENT 879 Cu. Yds.
 EMB. +15% 1011 Cu. Yds.
 WASTE 10 Cu. Yds.

EXCAVATION 1551 Cu. Yds.
 EMBANKMENT 268 Cu. Yds.
 EMB. +15% 308 Cu. Yds.
 WASTE 1243 Cu. Yds.



STRUCTURES UNDER 20 FT. SPAN "C"														
Ref. No.	Station	Removals		New Work		Structure Excavation Cu. Yds.	R.C.P. Sec. 60"	18" Cor. No. Lin. Ft.	Hand Laid Rip-Rap Sq. Yds.	Squared Stone Masonry Cu. Yds.	Channel Excavation Cu. Yds.	Removal Existing Structure Lump Sum	Concrete 1-5/8" Mix Cu. Yds.	Remarks
		Type	Size	Type	Size									
5-C	218+20.7	PAVING BRIDGE	16" x 16" x 24" R.C.P.	Rdwy. Cul.	60" x 136"	200	136	10	20	16	25	Lump Sum	15.39	See details on sheet No. 19
TOTALS						200	136	10	20	16	25	Lump Sum	15.39	

U.S. PUBLIC WORKS
ROADWAY PROJECT NO.

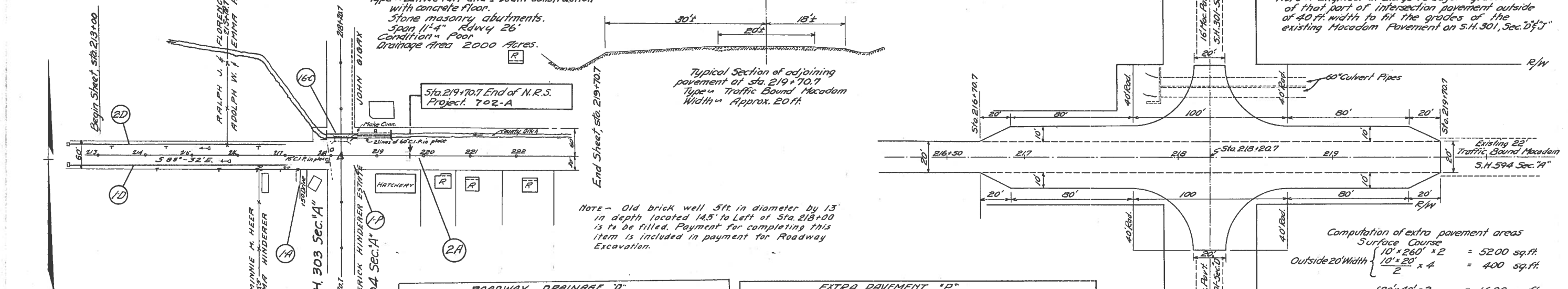
FED. AID	STATE	FED. AID	FISCAL	7 21
DIST. No. 10	OHIO	PROJ. No. NRS 702-A	YEAR 1935	

S.H. 303 SEC. "A" (Part)
FULTON COUNTY

Data on existing structure, sta. 218+20.7
Type - Lattice rail and I-beam construction with concrete floor.
Stone masonry abutments.
Span 11'-4" Rdwy. 26'
Condition - Poor
Drainage Area 2000 Acres.

Typical Section of adjoining pavement of sta. 219+70.7
Type - Traffic Bound Macadam
Width - Approx. 20 ft.

Note - Engineer in charge to adjust gradient of that part of intersection pavement outside of 40 ft. width to fit the grades of the existing Macadam Pavement on S.H. 301, Sec. D of J.



NOTE - Old brick well 5 ft. in diameter by 13' in depth located 14.5' to left of Sta. 218+00 is to be filled. Payment for completing this item is included in payment for Roadway Excavation.

PRIVATE DRIVE, ROAD AND MAIL BOX APPROACHES				
Ref. No.	Station	Rt. or Lt.	Place	
			Aggregate	Cu. Yds.
1-A	217+50	Rt.	5	
2-A	217+00	on E	40	
TOTALS			45	

ROADWAY DRAINAGE "D"					
Ref. No.	Station	Rt. or Lt.	Drain Tile Sec. M-6.7(B) - Lin. Ft.		Remarks
			From	To	
1-D	218+41	Rt.	459		
2-D	218+41	Lt.	459		
TOTALS			918		

EXTRA PAVEMENT "P"						
Ref. No.	Station	From	To	Pavement		
				2 1/2" Bituminous Concrete Surface Course Sq. Yds.	4 1/2" W.B. Macadam First Base Course Sq. Yds.	4 1/2" W.B. Macadam Second Base Course Sq. Yds.
1-P	216+70.7	219+70.7		952.6	955.4	955.4
TOTALS				952.6	955.4	955.4

Computation of extra pavement areas

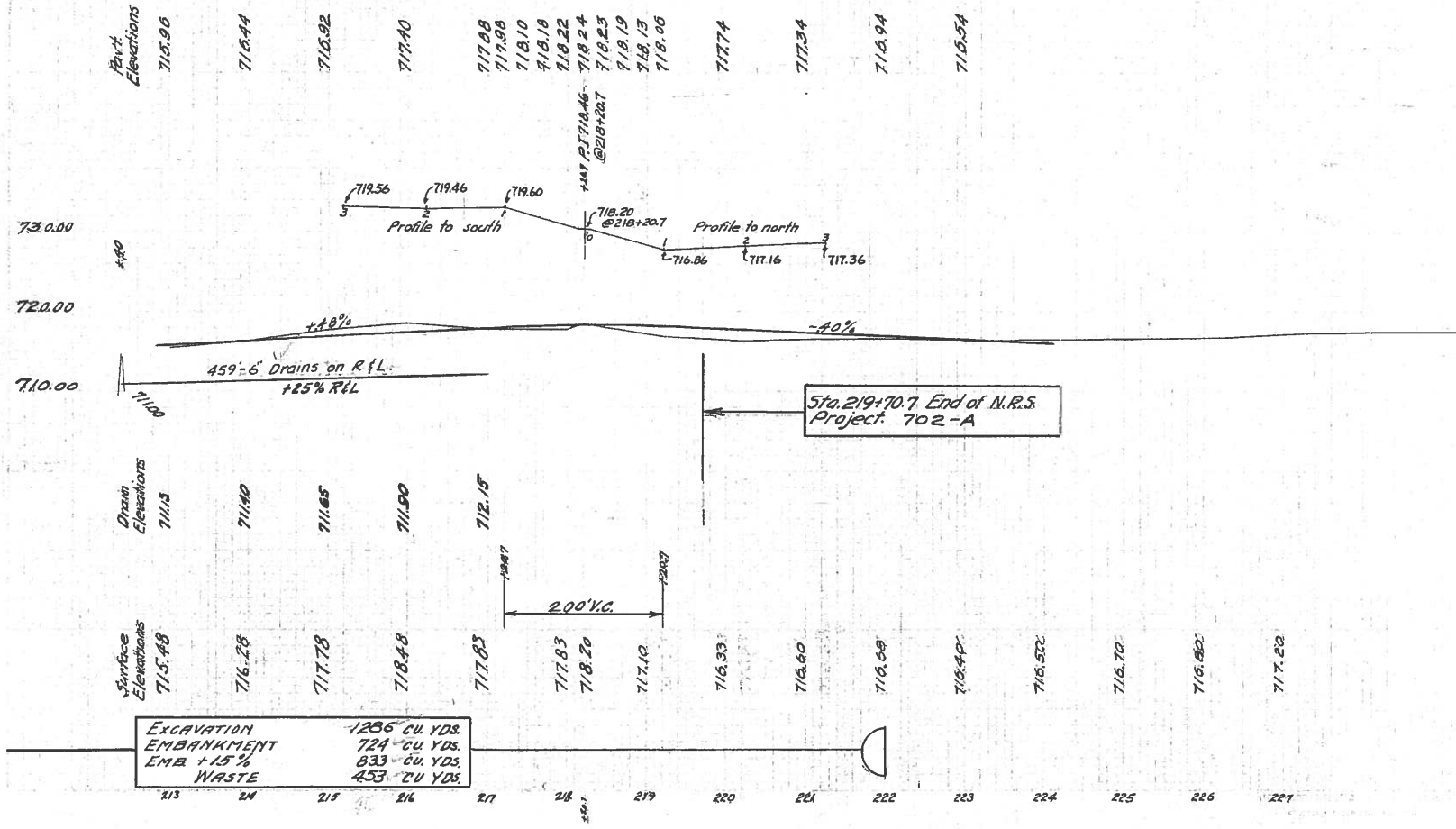
Surface Course
 Outside 20' width $\left\{ \begin{array}{l} 10' \times 260' \times 2 = 5200 \text{ sq. ft.} \\ 10' \times 20' \times 4 = 400 \text{ sq. ft.} \end{array} \right.$

Outside 40' width $\left\{ \begin{array}{l} 20' \times 40' \times 2 = 1600 \text{ sq. ft.} \\ 80' \text{ (Area Circle with 80' Dia.)} = 1373.45 \text{ sq. ft.} \end{array} \right.$
 Total extra surface course = 8573.45 sq. ft.
 = 952.6 sq. yds.

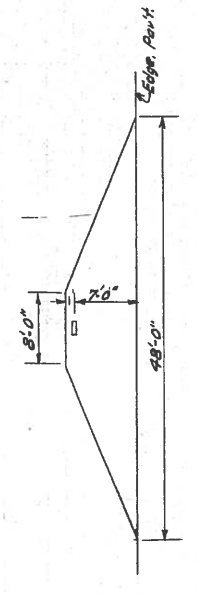
Base Courses
 Outside 21' width $\left\{ \begin{array}{l} 10' \times 260' \times 2 = 5200 \text{ sq. ft.} \\ 10' \times 20' \times 4 = 400 \text{ sq. ft.} \end{array} \right.$
 Outside 40' width $\left\{ \begin{array}{l} 21' \times 39.5' \times 2 = 1659 \text{ sq. ft.} \\ 79' \text{ (Area Circle with 79' Dia.)} = 1339.33 \text{ sq. ft.} \end{array} \right.$
 Total extra base course = 8598.33
 = 955.4 sq. yds.

DETAIL OF INTERSECTION
Sta. 216+70.7 to Sta. 219+70.7

BIT. X Top W end Conc. Pump Platform 42" R. Sta. 217+60
Elev. - 719.86



Excavation	1285 cu. yds.
Embankment	724 cu. yds.
EMB + 15% WASTE	833 cu. yds.
WASTE	453 cu. yds.



DETAIL OF MAIL BOX APPROACH
Amount of material to be used for each approach = 3 cu. yds. material spread loose.