

1057

# STATE HIGHWAY DEPARTMENT OF OHIO BUREAU OF CONSTRUCTION SEC. 0 - TOLEDO - WAUSEON ROAD

I.C.H. NO. 20 PET. NO. 3188

## FULTON COUNTY

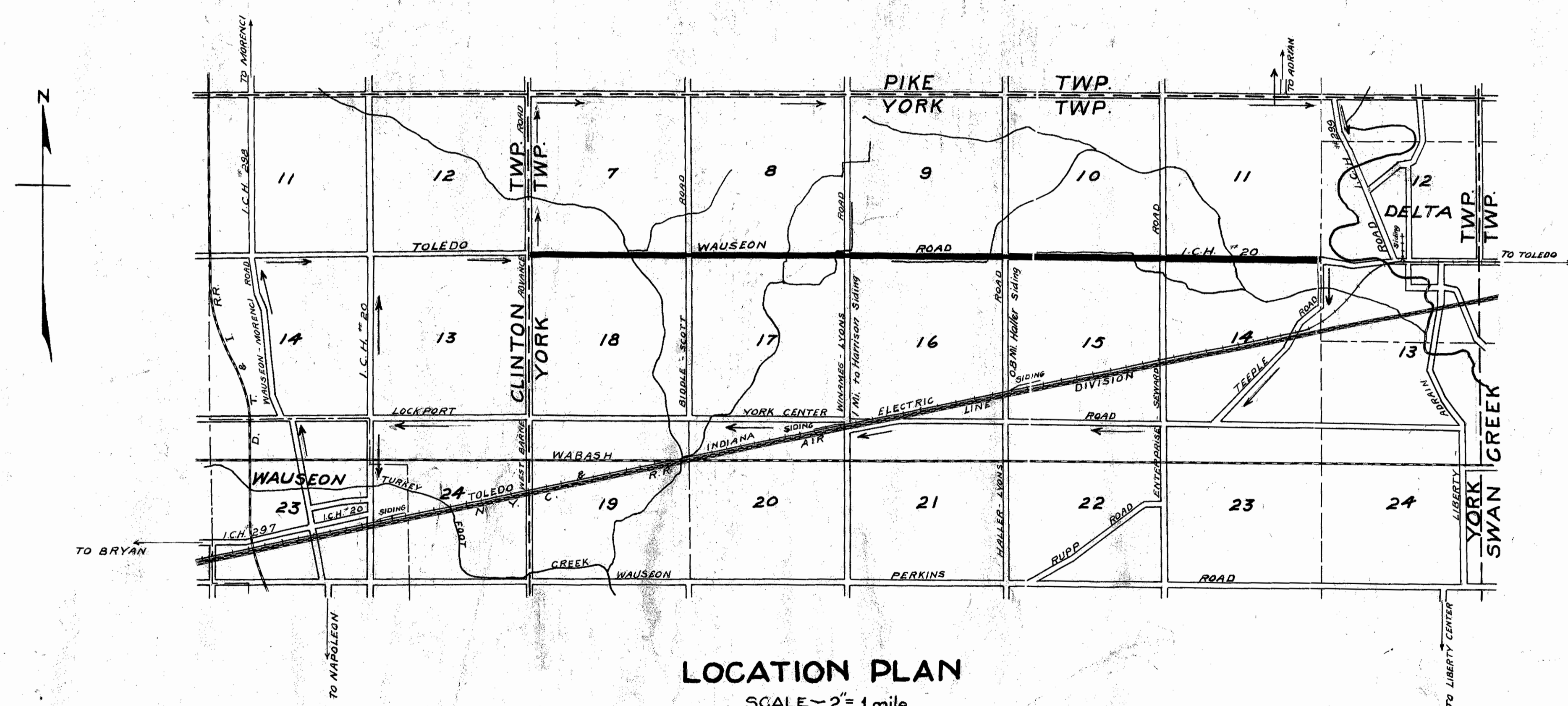
### YORK TOWNSHIP

1918

INDEX

Title page	Sheet 1
Plans & Profiles	2 to 10
Typical Cross Sections	11
Cross Sections	11 to 18

File # 49



LOCATION PLAN

SCALE - 2" = 1 mile

PORTION TO BE IMPROVED **—————**

DETOURS **—————>**

CONVENTIONAL SIGNS

Township Line	---
Section Line	- - - -
Center Line	---
City or Village Line	---
Fence Line	*****
Telephone or Telegraph	TTTTTTTTTT
Steam Railroad	====
Electric Line	-----
Trees & Stumps	o o o o o o o o

SCALES

Plan	1" = 100'
Profile (Vertical)	1" = 10'
Profile (Horizontal)	1" = 100'
Cross Sections	1" = 5'

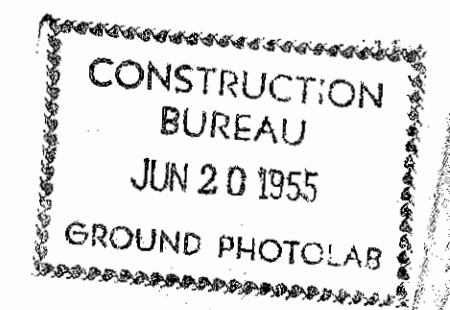
Approved: C.P. Ueber  
Date Aug. 29, 1918. County Surveyor

We, the Commissioners of Fulton County, hereby approve these plans and certify that the right-of-way is available for the construction of the above highway.

Signed: Charles A. Gammel Pres.  
C. C. Spring  
Albert Edgar  
Date Aug. 29, 1918. County Commissioners.

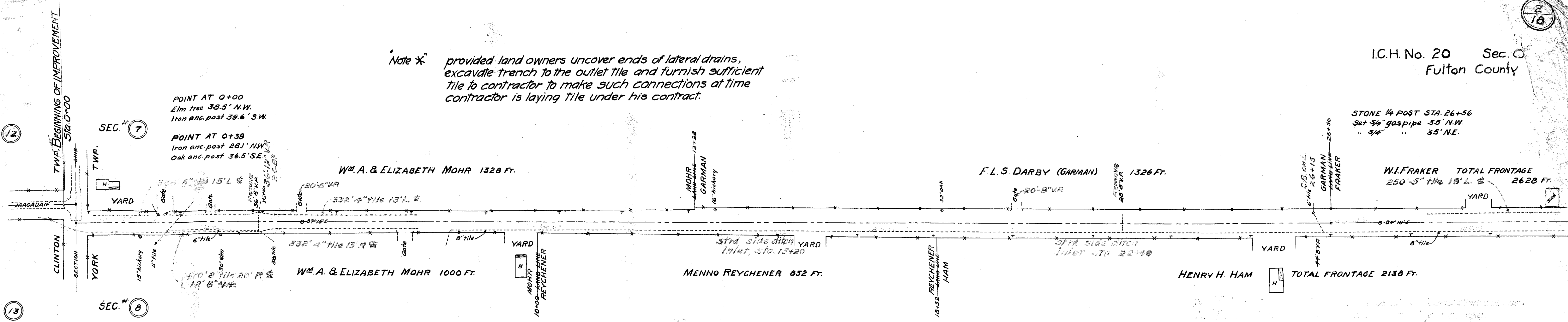
I hereby approve these plans and declare that the making of this improvement will require the closing to traffic of the highway and that detours will be provided as shown on plan.

Approved: D.W. Seitz  
Date 9-7-18 Division Engineer.  
Approved: Edw. Branning  
Date 7-4-19 Chief Highway Engineer.  
Approved: Charles C. ...  
Date 2-15-19 State Highway Commissioner.



I.C.H. No. 20 Sec. 0  
Fulton County

Note \* provided land owners uncover ends of lateral drains, excavate trench to the outlet tile and furnish sufficient tile to contractor to make such connections at time contractor is laying tile under his contract.



POINT AT 0+00  
Elm tree 38.5' N.W.  
Iron anc. post 39.6' S.W.

POINT AT 0+39  
Iron anc. post 28.1' N.W.  
Oak anc. post 36.5' S.E.

STONE 1/4 POST STA. 26+56  
Set 3/4" gas pipe 35' N.W.  
" 3/4" " 35' N.E.

W.I. FRAKER TOTAL FRONTAGE  
250'-5" tile 13' L. # 2628 FT.

RIGHT-OF-WAY 60 Ft.

NOTE: open ditch to west shall be deepened, to make sufficient outlet for 8" tile, and earth to be placed over tile.  
see sheet 10 for plan of curve and approach at sta. 0+00

NOTES:  
There shall be no ditches made at yards and gates.  
All pipe placed in side ditch for overflow water shall be laid true to line and grade of open ditch. See Note above \*.  
Contractor shall connect all lateral drains with tile and care be taken, not to damage any side drains along open ditch.  
All inlets and outlets to catch-basins shall be V.P. or C.I.P.  
Where outlet of tile is open ditch 12ft. of V.P. shall be used.  
All pipe and tile shall be placed as shown on plans.

All material removed by Contractor and not used on this road shall be placed in a neat pile near stations as indicated below.  
Between sta. 0+00 and 52+84 near sta. 31+00  
" " 52+84 " 105+00 " " 85+00  
" " 105+00 " 160+00 " " 128+00  
" " 160+00 " 211+00 " " 181+00  
" " 211+00 " 264+76 " " 232+00

NOTE: The pipes of The Ohio Gas, Light, & Coke Co. are in the south edge of the roadgrade from Sta. 0+00 to about sta. 53+00, and from about Sta. 55+00 to Sta. 264+76 the pipes are in the north edge of the roadgrade.

B.M. on spike in anchor post S.E. cor. crossroads Eleva. 767.00

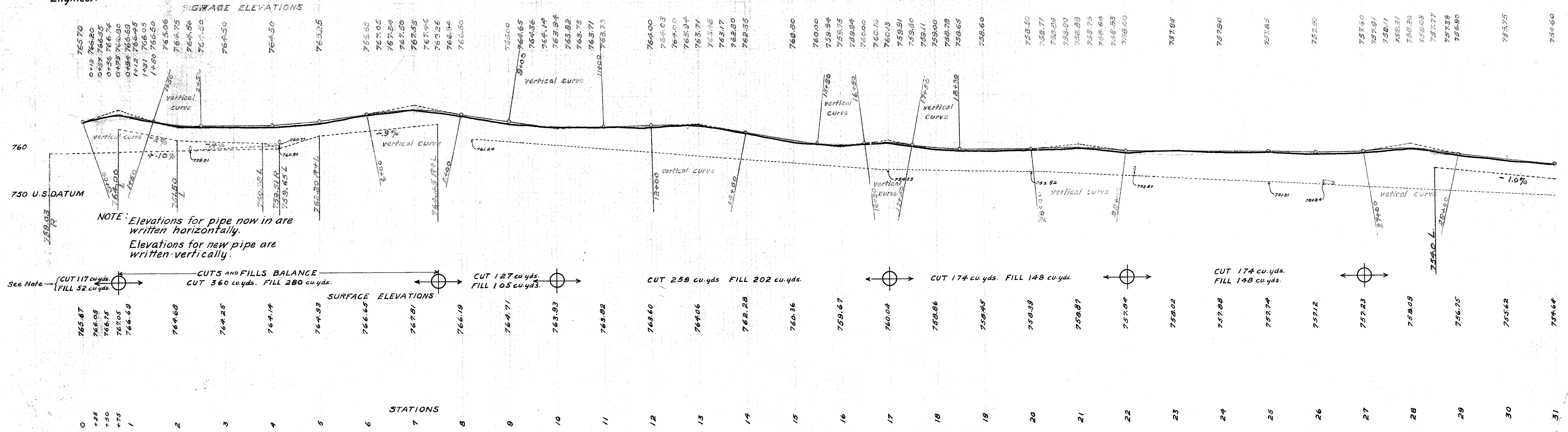
B.M. on spike in hickory 25' R. 1+70 Eleva. 764.63

B.M. on spike in hickory 26' R. 13+70 Eleva. 764.38

B.M. on x in cen. end con. walk 30' R. 25+50 Eleva. 758.61

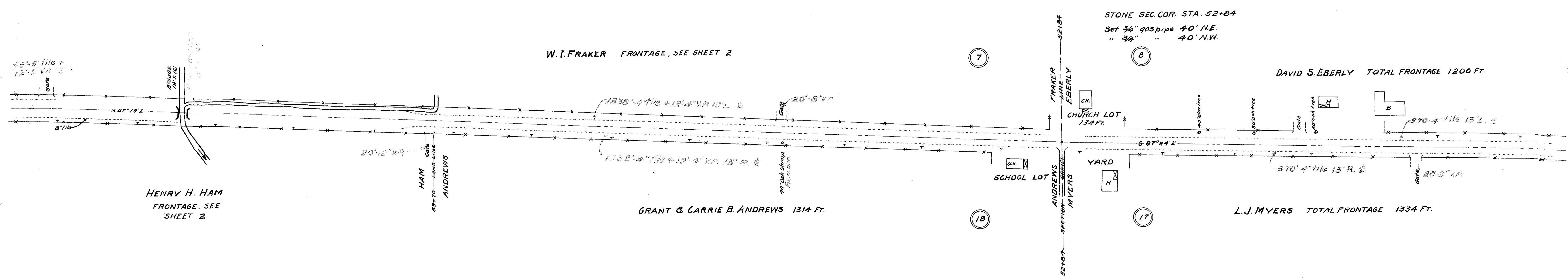
B.M. on spike in hickory 33' L. 29+48 Eleva. 758.83

NOTE: All excess earth at west end shall be used to widen grade to west as directed by Engineer.



NOTE: Elevations for pipe now in are written horizontally.  
Elevations for new pipe are written vertically.

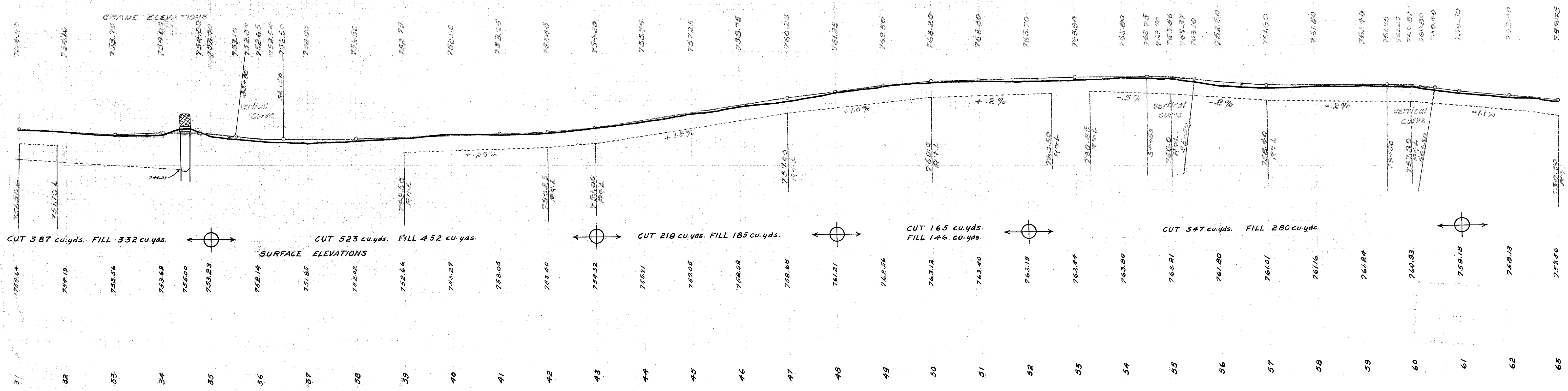
I.C.H. No. 20 Sec. 0  
Fulton County



B.M. on 3" in 1915 in con. about one post  
27' R. 39+70 Eleva. 751.84

B.M. on x SW. cor. con. step at church  
60' N.E. 52+84 Eleva. 764.41

B.M. on spike in oak tree 32' L.  
59+75 Eleva. 761.50



CUT 387 cu.yds. FILL 332 cu.yds.

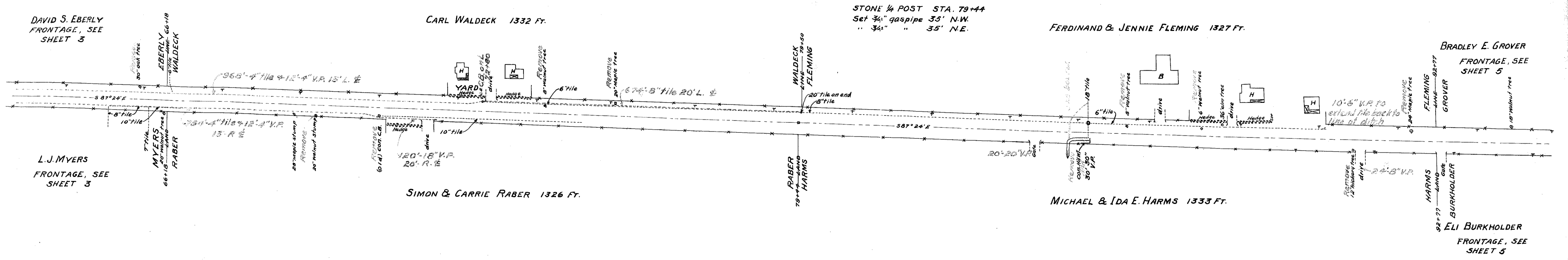
CUT 523 cu.yds. FILL 452 cu.yds.

CUT 219 cu.yds. FILL 185 cu.yds.

CUT 165 cu.yds. FILL 146 cu.yds.

CUT 347 cu.yds. FILL 280 cu.yds.

I.C.H. No. 20 Sec. 0  
Fulton County

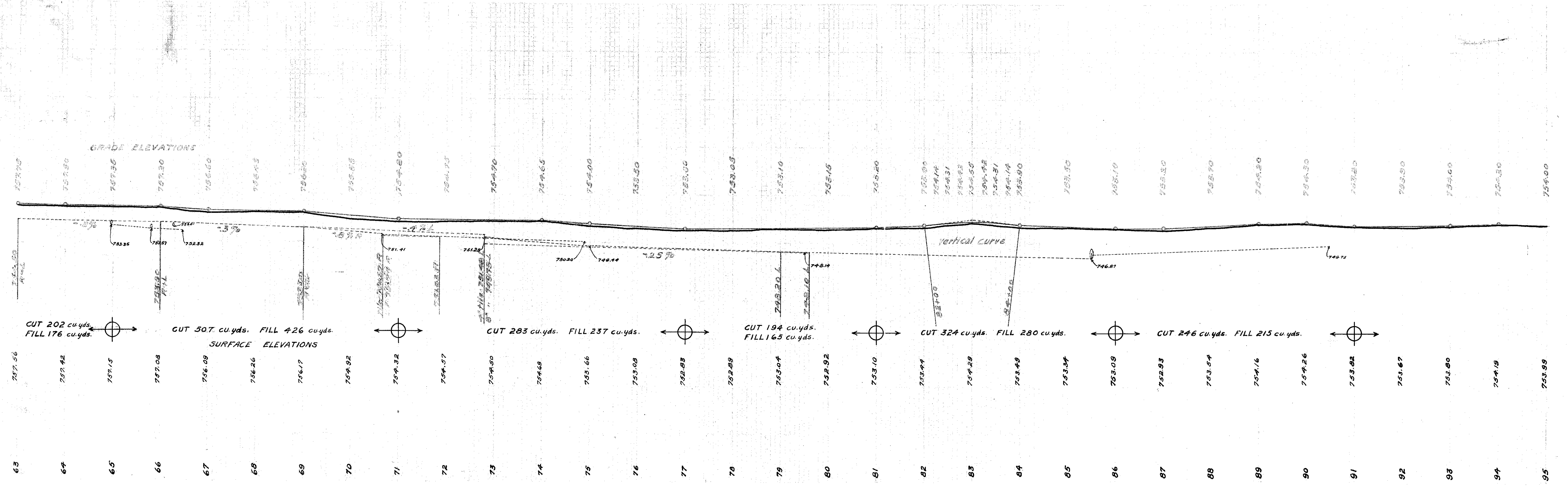


B.M. on spike in Walnut tree 26' R.  
66+10 Eleva. 757.31

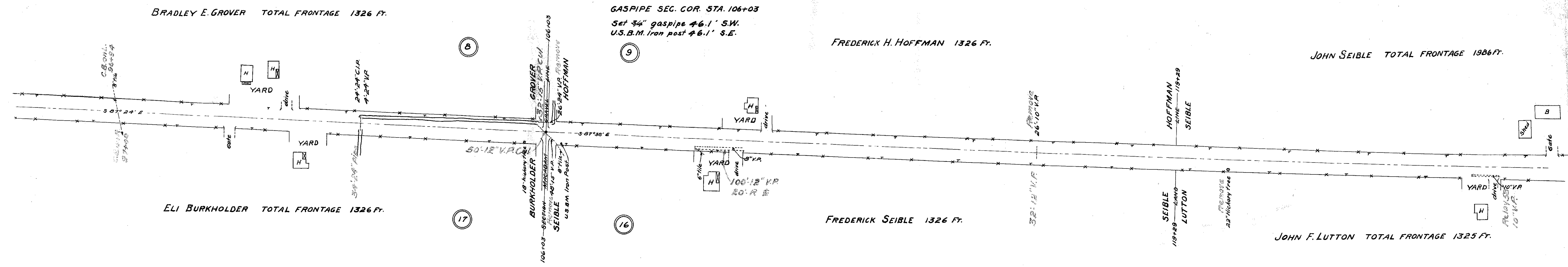
B.M. on spike in pine tree 45' L.  
73+50 Eleva. 755.32

B.M. on x cen. W. end con. wall  
20' R. 85+35 Eleva. 751.48

B.M. on spike in Walnut tree 29' L.  
94+28 Eleva. 754.85



I.C.H. No. 20 Sec. 0  
Fulton County



B.M. on spike in Cherry tree 30' L.  
100+06 Elev. 754.77

B.M. U.S. Iron post S.E. Cor. Cross Roads  
Elev. 753.23

B.M. on spike in Maple tree 25'  
L. 110+40 Elev. 755.56

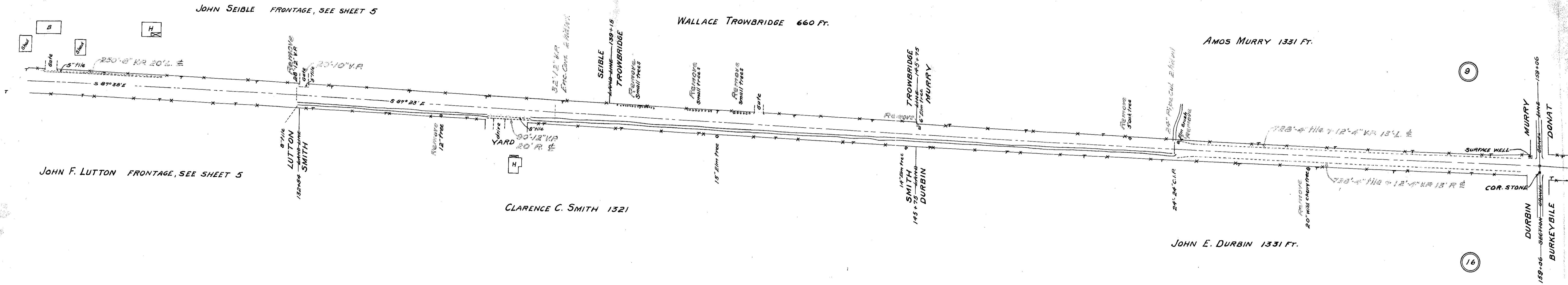
B.M. on spike in Peach tree 37'  
R. 122+55 Elev. 754.70

Station	Grade Elevation	Surface Elevation	Cut/Fill
95	754.00	753.99	CUT 508 cu.yds. FILL 430 cu.yds.
96	754.00	753.97	
97	753.60	753.62	
98	753.80	753.78	
99	754.00	754.61	
100	754.45	754.35	CUT 705 cu.yds. FILL 588 cu.yds.
101	754.80	753.91	
102	753.95	753.97	
103	754.00	753.96	
104	754.05	753.83	
105	754.10	753.84	CUT 361 cu.yds. FILL 297 cu.yds.
106	754.50	754.55	
107	754.10	753.70	
108	754.20	754.17	
109	754.50	754.75	
110	754.50	754.57	CUT 435 cu.yds. FILL 396 cu.yds.
111	754.50	755.12	
112	754.50	754.42	
113	754.50	754.17	
114	753.80	754.12	
115	754.00	754.21	CUT 645 cu.yds. FILL 561 cu.yds.
116	754.10	754.16	
117	754.20	753.97	
118	754.20	754.32	
119	754.40	754.73	
120	754.50	755.19	
121	754.50	754.82	
122	754.00	754.78	
123	754.30	755.44	
124	754.30	754.43	
125	754.70	754.52	
126	754.60	754.45	
127	754.50	754.90	

I.C.H. No. 20 Sec. 0  
Fulton County

STONE SEC. COR. STA. 159+06  
Set 3/4 gas pipe 42' N.E.  
" 3/4 " 42' N.W.  
Stake on 1/2 N. Cor. Stone.

1/4 LINE STA. 132+54  
Stake on 1/2 N. of Anc. post.



BM on spike in Apple tree 33' L.  
150+09 Elev. 754.86

BM on spike in Elm tree 30' R.  
142+95 Elev. 753.57

BM on spike in Ash tree 35' L.  
151+12 Elev. 752.59

BM on head of spike NE. Cor. pump platform  
NW. Cor. crossroads. Elev. 755.07

Station	Grade Elevation	Surface Elevation
127	754.90	754.90
128	754.90	754.46
129	754.90	754.22
130	754.70	754.90
131	754.60	754.78
132	754.10	754.28
133	753.80	754.11
134	753.60	753.92
135	753.50	753.43
136	753.00	752.94
137	752.90	753.16
138	752.80	752.81
139	753.00	753.10
140	752.20	753.38
141	753.40	753.39
142	753.50	753.20
143	753.60	753.67
144	753.25	753.05
145	753.00	752.78
146	752.75	752.88
147	752.75	753.03
148	752.50	752.73
149	752.50	752.44
150	752.50	752.48
151	752.60	752.83
152	752.50	752.08
153	752.85	752.83
154	752.85	753.34
155	752.70	753.68
156	752.80	753.47
157	752.80	753.72
158	752.80	754.74
159	752.80	754.80

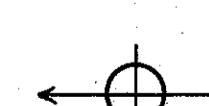
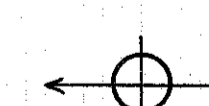
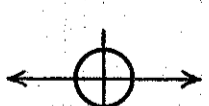
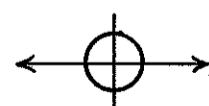
GRADE ELEVATIONS

SURFACE ELEVATIONS

CUT 581 cu.yds. FILL 496 cu.yds.

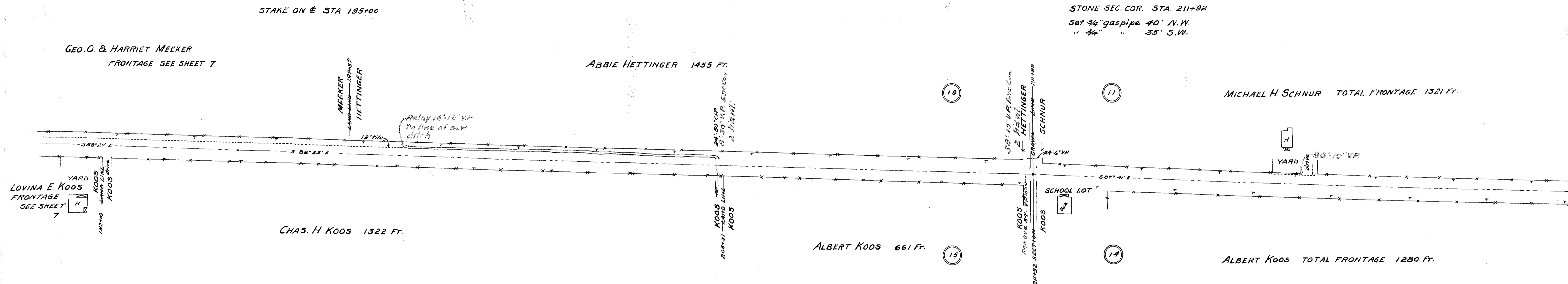
CUT 591 cu.yds. FILL 480 cu.yds.

CUT 602 cu.yds. FILL 516 cu.yds.



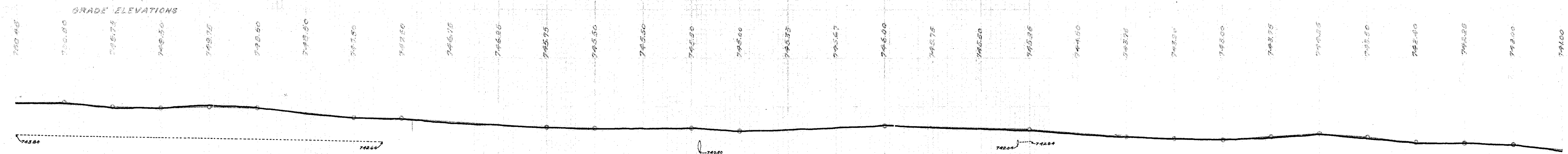


I.C.H. No. 20 Sec. 0  
Fulton County



B.M. bottom N.W. cor. board School House Elev. 746.23

B.M. on spike in Maple 35'R. 218+08 Elev. 744.70



Station	Surface Elevation	Cut (cu. yds.)	Fill (cu. yds.)
191	750.37		
192	750.60		
193	749.75		
194	748.56		
195	750.00		
196	749.72		
197	748.53		
198	747.74		
199	748.58		
200	746.77		
201	746.23		
202	745.82		
203	746.53		
204	746.60		
205	745.79		
206	745.08		
207	745.40		
208	749.92		
209	746.24		
210	748.82		
211	748.56		
212	745.18		
213	744.34		
214	743.89		
215	743.41		
216	743.21		
217	743.66		
218	744.31		
219	743.32		
220	742.38		
221	742.41		
222	742.07		
223	740.81		

CUT 580 cu.yds. FILL 515 cu.yds.

CUT 226 cu.yds. FILL 191 cu.yds.

CUT 463 cu.yds. FILL 393 cu.yds.

CUT 178 cu.yds. FILL 148 cu.yds.

CUT 393 cu.yds. FILL 330 cu.yds.

SURFACE ELEVATIONS



I.C.H. No. 20 Sec. 0  
Fulton County

MICHAEL H. SCHNUR  
FRONTAGE SEE  
SHEET 8

MICHAEL H. SCHNUR 1322 Ft.

STONE 1/4 POST STA. 238+35  
Set 3/4" gaspipe 30° S.E.  
.. 3/4" .. 30° N.E.

JAS. W. McQUILLEN 1316 Ft.

JAMES McARTHUR  
TOTAL FRONTAGE 1325 Ft.

ALBERT KOOS  
FRONTAGE SEE  
SHEET 8

MARY A. COLLINS 1363 Ft.

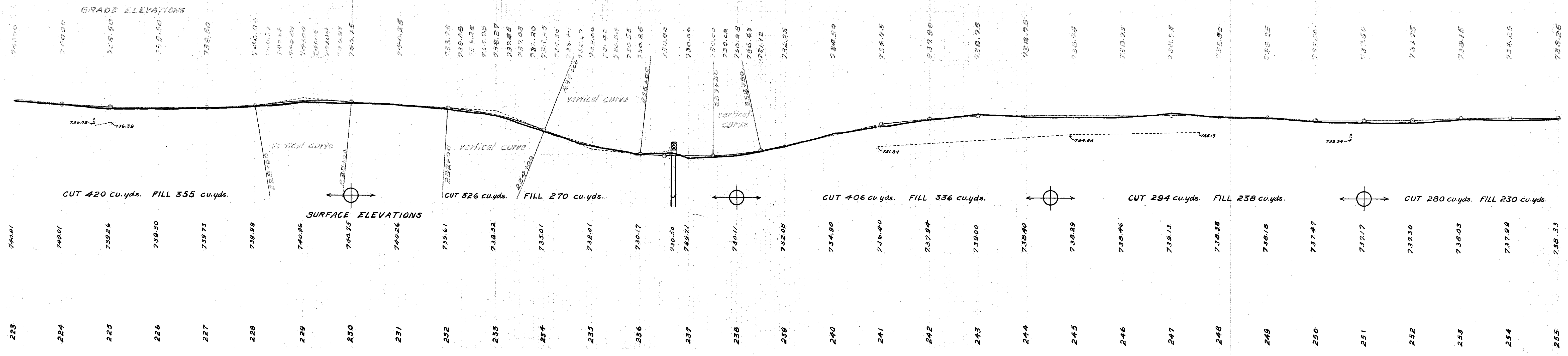
NOTE:  
old channel to be  
straightened as  
directed by Engineer,  
excavation not to  
exceed 50 cu.yds.

W.M. N. NORRIS 1316 Ft.

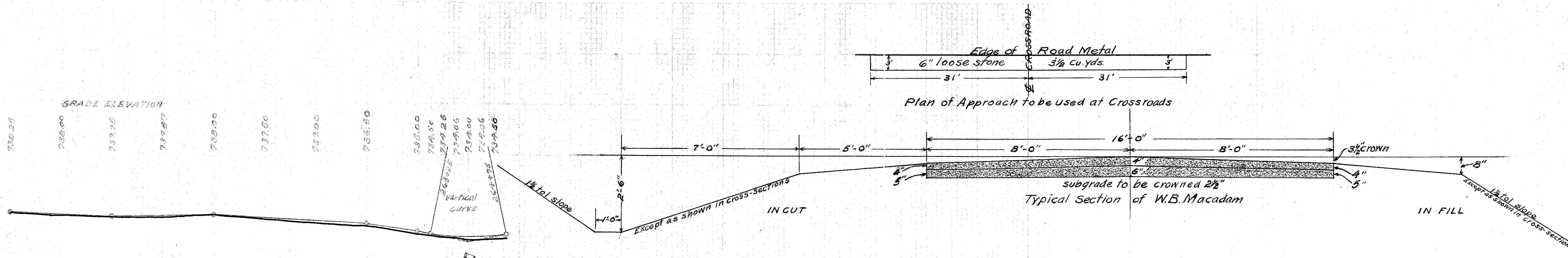
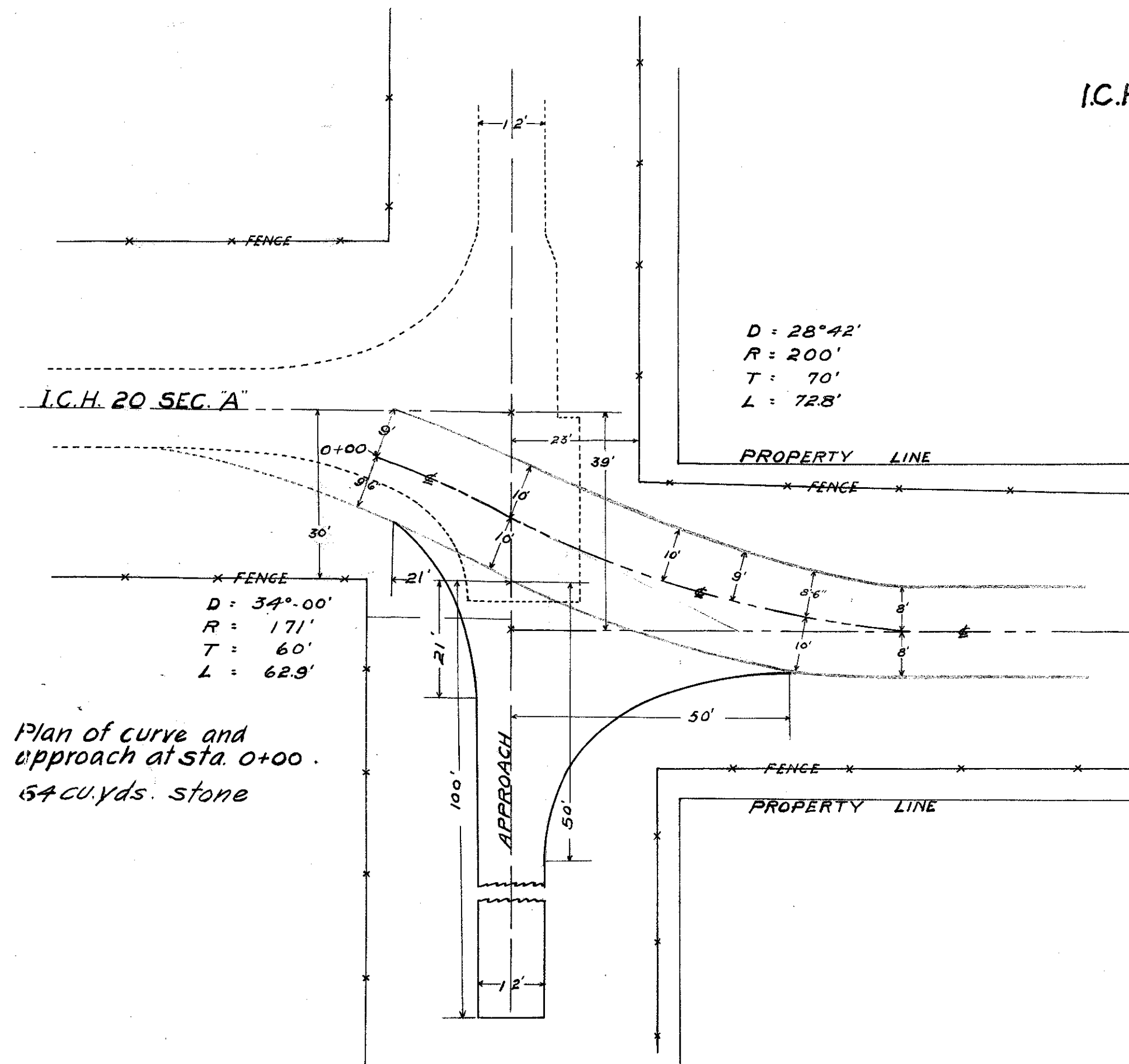
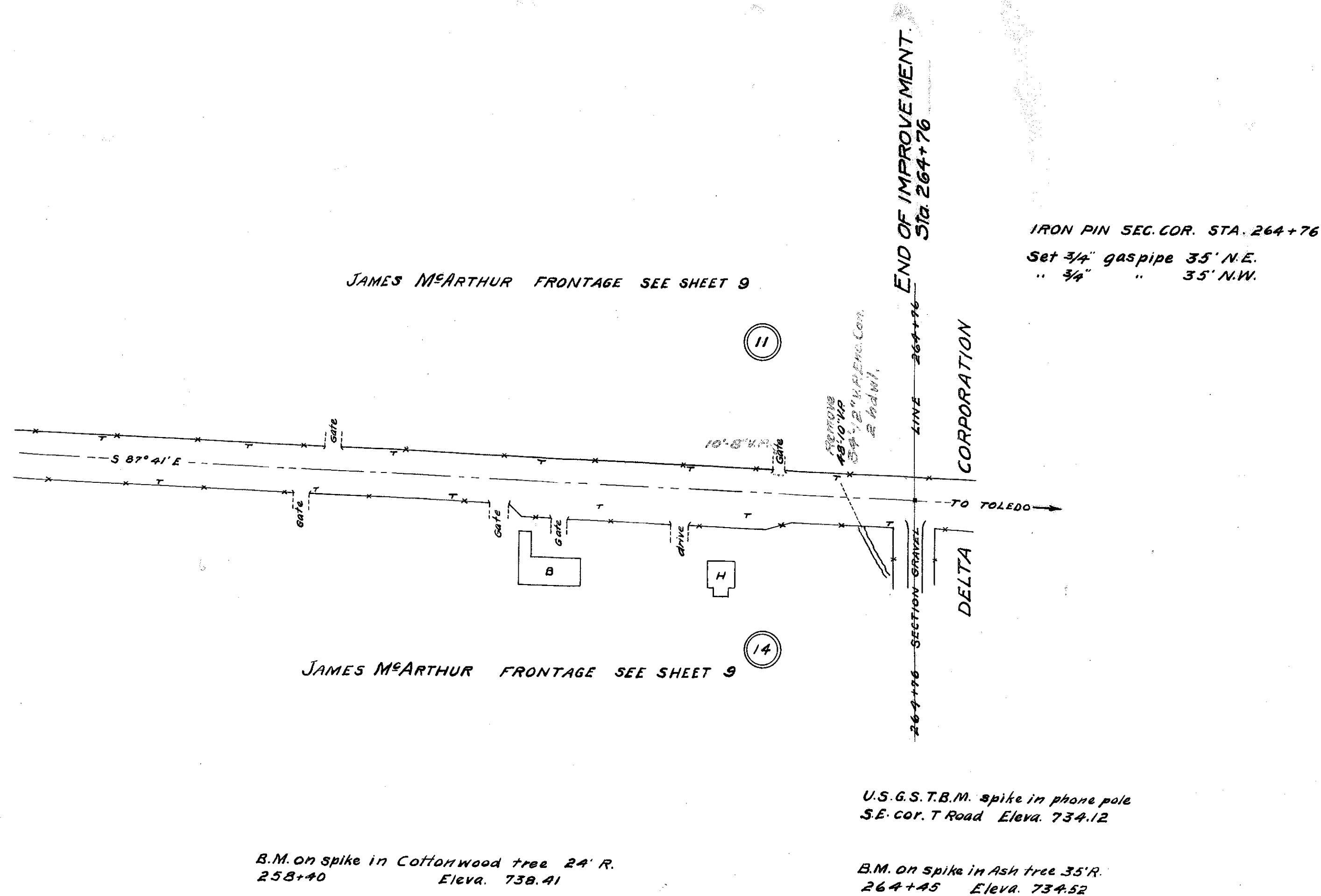
JAMES McARTHUR  
TOTAL FRONTAGE 1325 Ft.

B.M. on spike in Locust tree 33' L  
233+02 Elev. 740.06

B.M. on spike in Maple 32' R.  
247+75 Elev. 739.99



I.C.H. No. 20 Sec. 0  
Fulton County



CUT 320 cu. yds. FILL 255 cu. yds.

Station	Surface Elevation
255	738.33
256	737.91
257	737.76
258	737.74
259	738.06
260	737.50
261	736.86
262	736.02
263	734.46
264	733.45
264+76	733.87