

FED. RD. DIVISION	STATE	PROJECT
2	OHIO	STATE

FULTON COUNTY
FUL-20A (19.11-19.74)

OCT 25 1965
GROUND PHOTOL

STATE OF OHIO DEPARTMENT OF HIGHWAYS FUL-20A (19.11-19.74) YORK TOWNSHIP AND VILLAGE OF DELTA FULTON COUNTY

1961 SPECIFICATIONS

CONVENTIONAL SIGNS

County Line	-----
Township Line	-----
Section Line	-----
Center Line	-----
Corporation Line	-----
Fence Line	x x x x x x x x x x x x x x x x
Guard Rail: Existing	o o o o o o o o o o o o o o o o
Railroad	----- Proposed -----
Poles: Power	P P P P P P P P P P P P P P P P
Trees or Stumps	T T T T T T T T T T T T T T T T
Sewers: Existing	----- Proposed -----

INDEX OF SHEETS

Title Sheet	1
Typical Sections	2-3
General Notes	4 & 7
General Summary	4
Calculations	5
Sub Summaries	6-7
Plan and Profile Sheets	8-12
Cross Sections	13-20
Pavement and Drive Details	21
Bridge Detail	22

LINE DATA

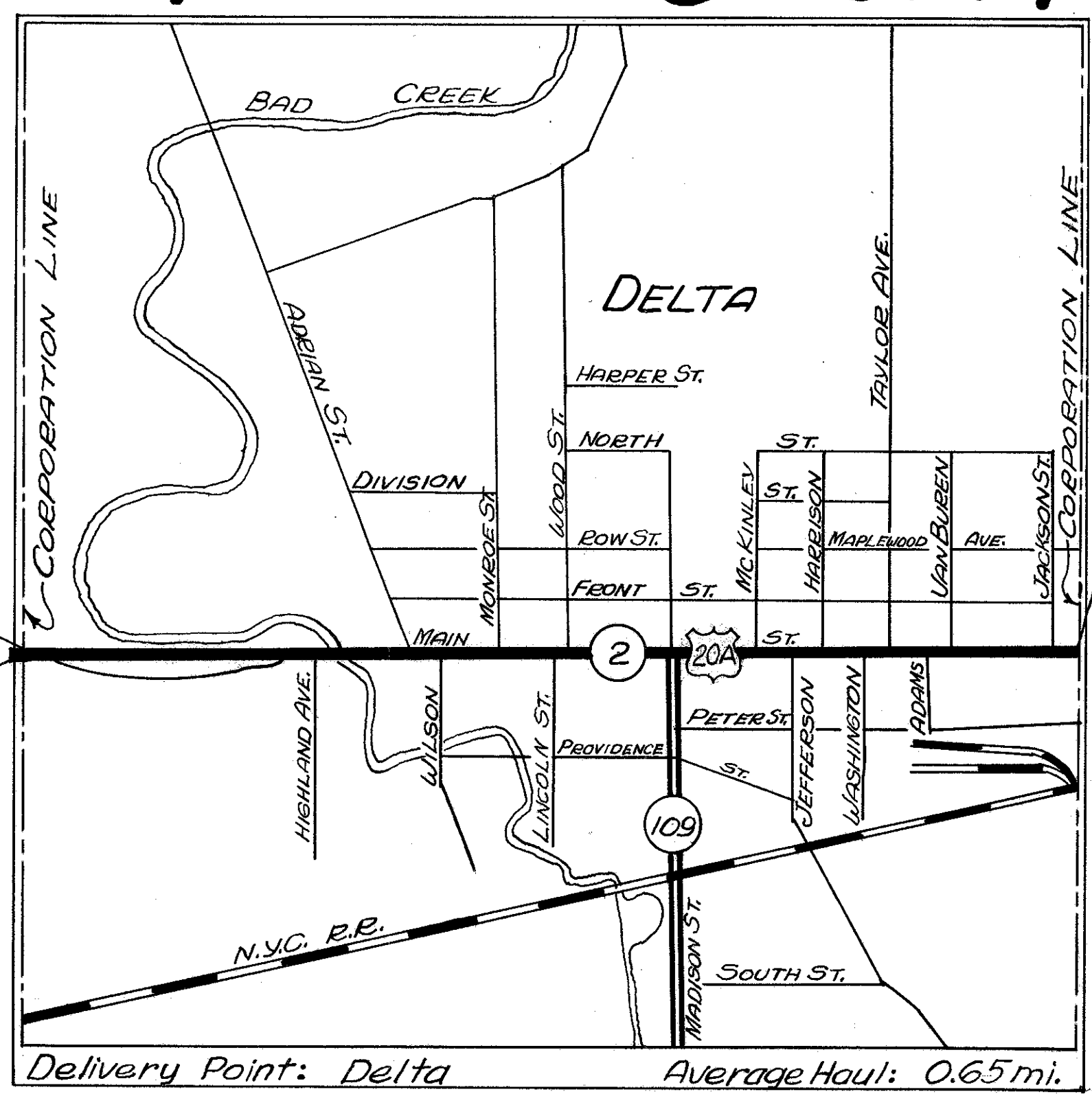
WORK - RURAL
Begin Sta. 1008+00 End Sta. 1009+00.80
Gross Length = Net Length = 100.80 Lin. Ft. or 0.019 Mi.

WORK & PROJECT - MUNICIPAL
Begin Sta. 1009+00.80 End Sta. 1074+ 61.00
Gross Length = Net Length = 6560.20 Lin. Ft. or 1.242 Mi.

Total Length Work = 6661.00 Lin. Ft. or 1.261 Mi.

Begin Project
Sta. 1009+00.80

Begin Work
Sta. 1008+00



LOCATION MAP

SCALE OF FEET
0' 500' 1000' 2000'

Portion to be improved
State roads
Other roads or streets

SCALE

Plan: 1" = 50'
Profile: Horizontal: 1" = 50'
Vertical: 1" = 5'
Cross Sections: 1" = 5'

The standard specifications of the State of Ohio, Department of Highways, including changes and supplemental specifications listed in the proposal shall govern this improvement.

The right of way for this improvement will be provided by the State of Ohio.

I hereby approve these plans and declare that the making of this improvement will not require the closing to traffic of the Highway and that provisions for the maintenance and safety of traffic will be as set forth on these plans and estimates.

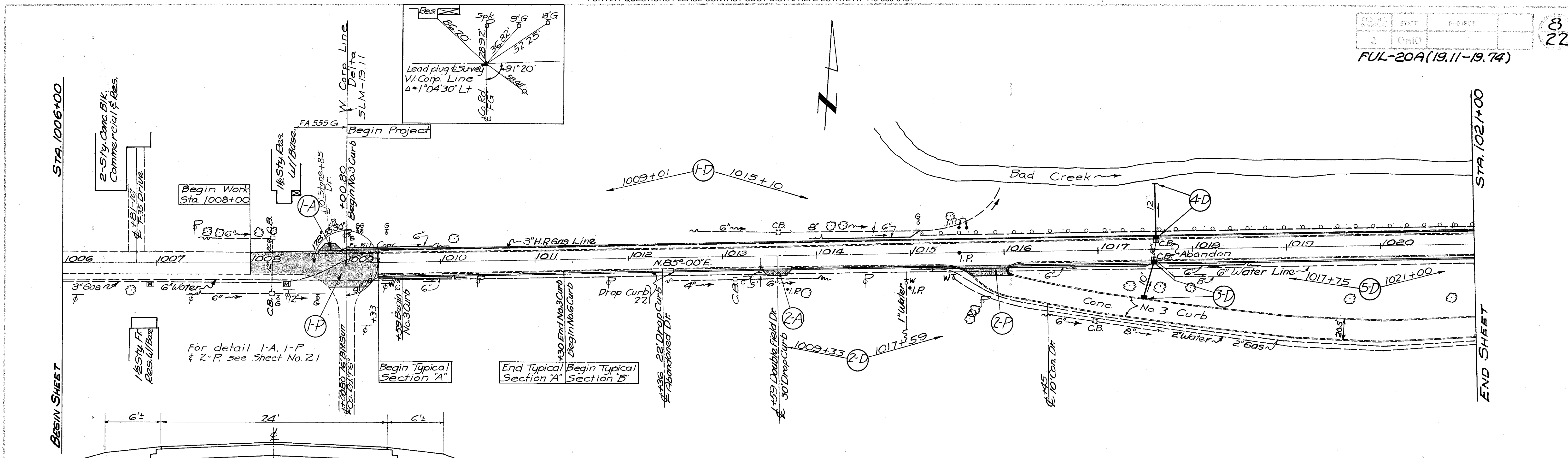
End Project
End Work
Sta. 1074+61.00

- Print Approved M. R. Stevenson
Date 7-8-61 Mayor, Village of Delta
- Approved L. M. Pueler
Date 7-5-61 Division Deputy Director
- Approved D. Brennan
Date 7-19-61 Engineer of Bridges
- Approved W. G. ...
Date 7-20-61 Engineer of Location and Design
- Approved C. W. McLaughlin
Date 7-20-61 Deputy Director of Design and Construction
- Approved _____
Date _____ Deputy Director of Right of Way
- Approved Aug. E. Heeger
Date 7-31-61 Deputy Director of Planning and Programming
- Approved Ed Berry
Date 7-31-61 First Assistant Director
- Approved E. S. Preston
Date 7-31-61 Director of Highways

STANDARD DRAWINGS				SUPPLEMENTAL SPECIFICATIONS	
B-T-70-71	11-15-60	L-3	4-1-50		
DR-1	1-3-55	L-3-A	4-1-50		
G-707	6-1-56	RI-1	7-15-58		
HW-E	11-15-60	T-35	1-2-56		
I-1	11-15-60	T-J	2-12-60		
I-8CB 22A & B	3-2-59	I-8 M.H. No. 1	1-26-59		
I-8CB No. 3-A	1-26-59				
I-12	7-1-54				

File No.	FULTON COUNTY FUL-20A (19.11-19.74)
Date of Letting	
Contract No.	

OCT 25 1965
GROUND PHOTOL

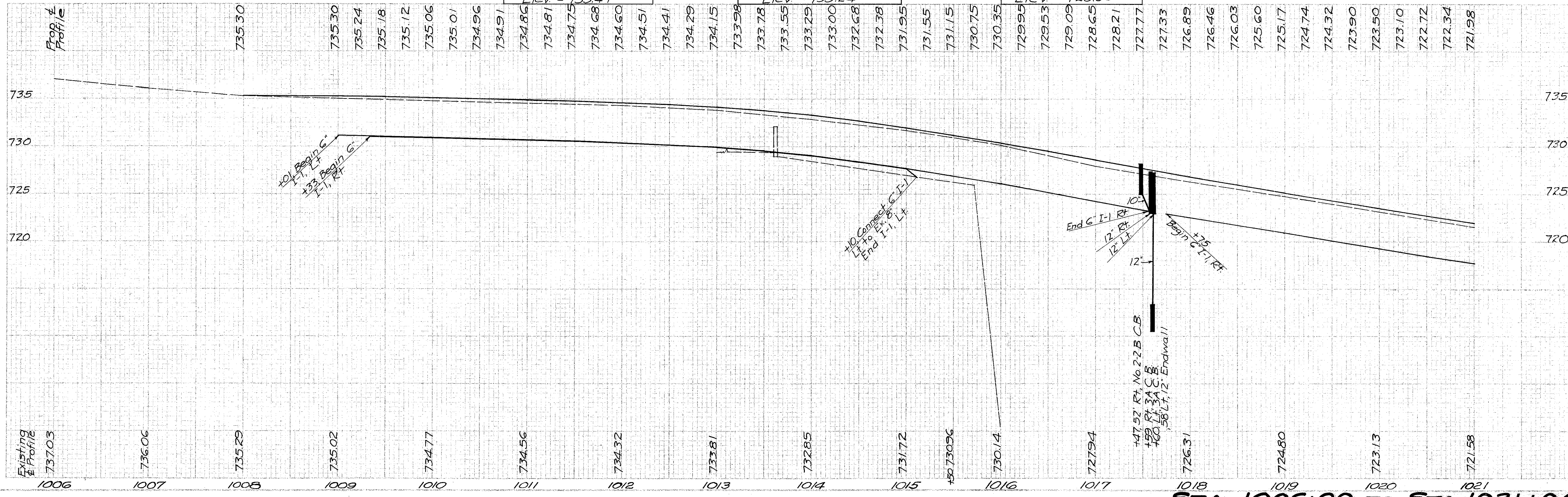


TYPICAL SECTION ADJOINING PAVEMENT
 Bituminous concrete surface on waterbound macadam, 12"± thick

B.M. No. 2, R.R. spk. N. side
 27' Elm, 24' Lt. Sta. 1010+15
 Elev. = 735.47

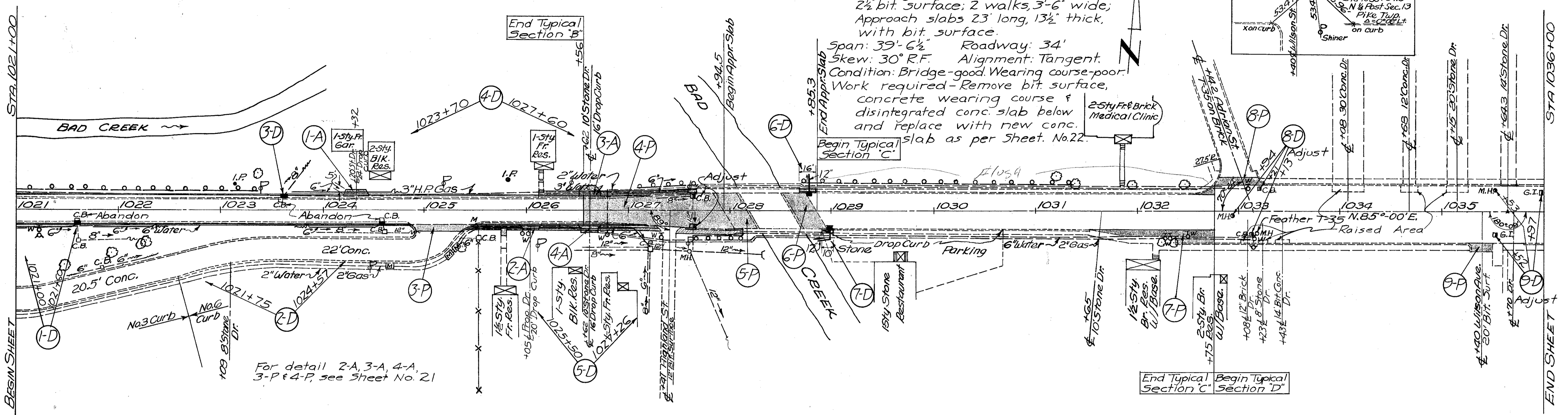
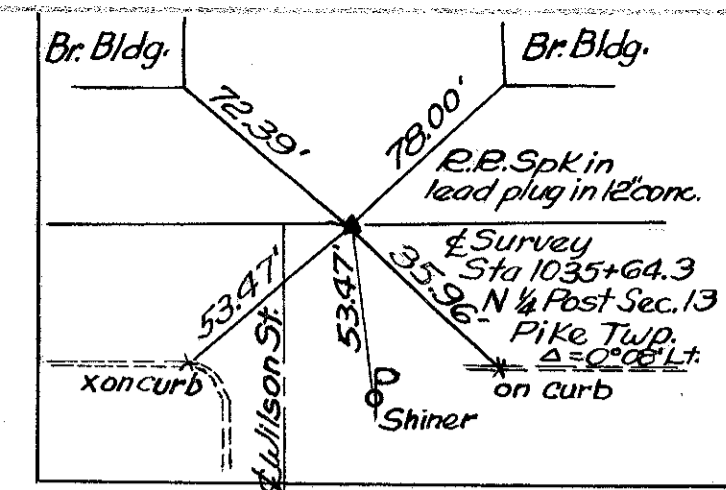
B.M. No. 3, R.R. spk. N. side
 23' Walnut 38' Rt. Sta. 1013+88
 Elev. = 735.24

B.M. No. 4, P.S. E. Cor. C.B.
 70' Rt. Sta. 1016+98
 Elev. = 729.80



FUL-20A (19.11-19.74)

DATA ON EXISTING BRIDGE
 Br. No. FUL 20A-1947, Sta. 1028+40
 Type: Conc. beam, conc. substructure, conc. wearing course 4" thick on 6 1/2" slab, 2 1/2" bit. surface; 2 walks, 3'-6" wide; Approach slabs 23' long, 13 1/2" thick, with bit. surface.
 Span: 39'-6 1/2" Roadway: 34'
 Skew: 30° R.F. Alignment: Tangent.
 Condition: Bridge-good Wearing course-poor
 Work required-Remove bit. surface, concrete wearing course & disintegrated conc. slab below and replace with new conc. slab as per Sheet. No. 22.



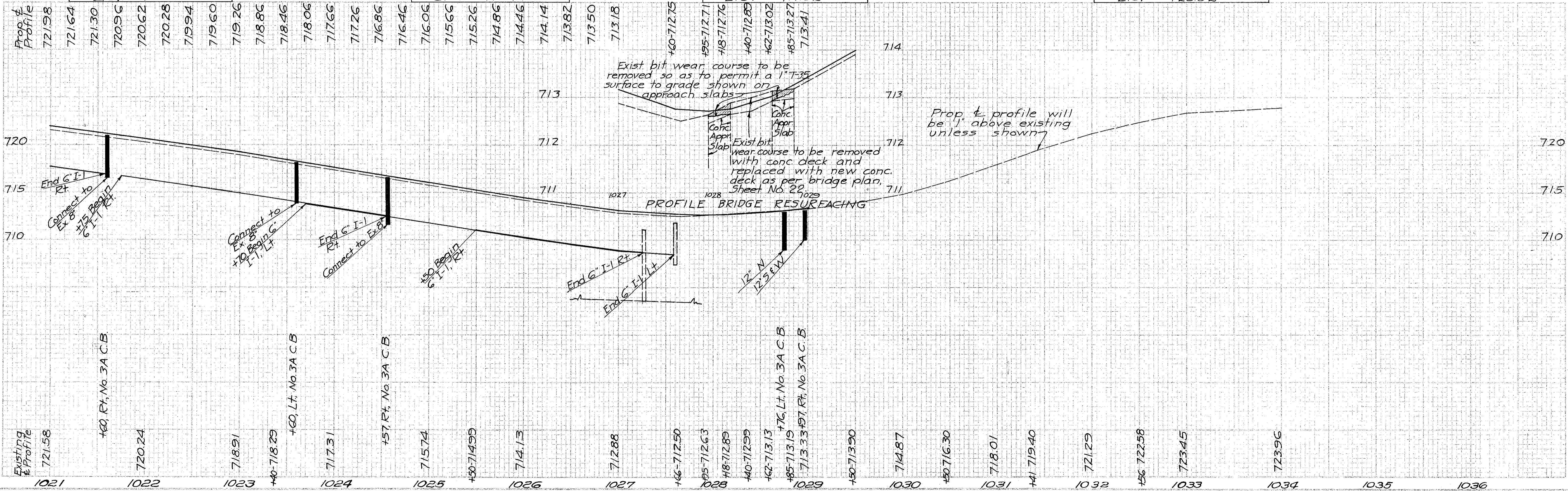
For detail 2-A, 3-A, 4-A, 3-P & 4-P, see Sheet No. 21

B.M. No. 5, Top N flange bolt
Fire hydrant, 24' Rt. Sta. 1021+22
Elev = 723.69

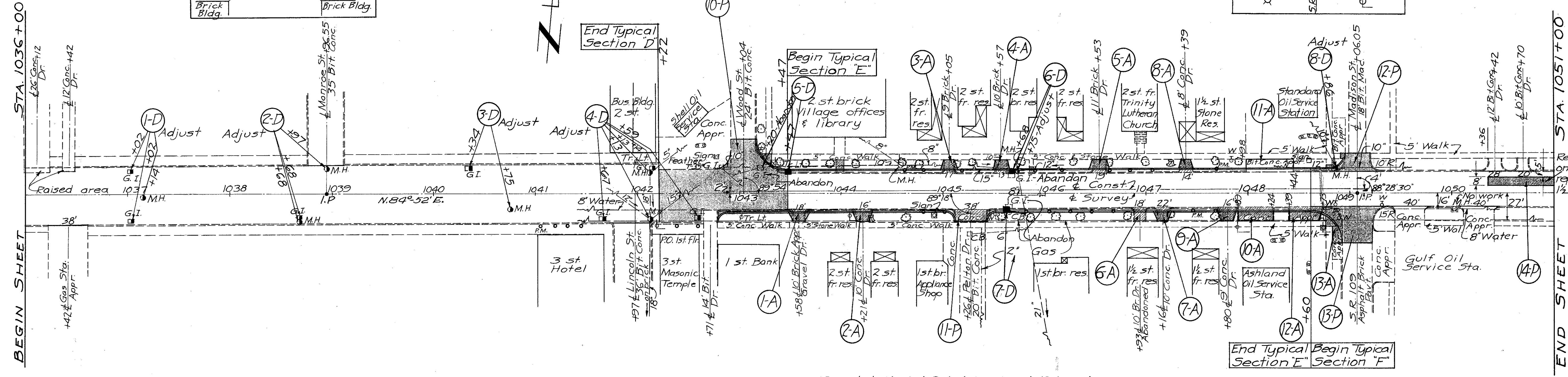
B.M. No. 6, N.W. Cor. N. wall
C.B. 23' Rt. Sta. 1025+54
Elev = 715.44

B.M. No. 7, USGS Plate Conc.
Br. rail, 22' Lt. Sta. 1028+51
Elev = 717.52

B.M. No. 8, top N. flange bolt
Fire hydrant, 31' Rt. Sta. 1033+15
Elev = 725.52

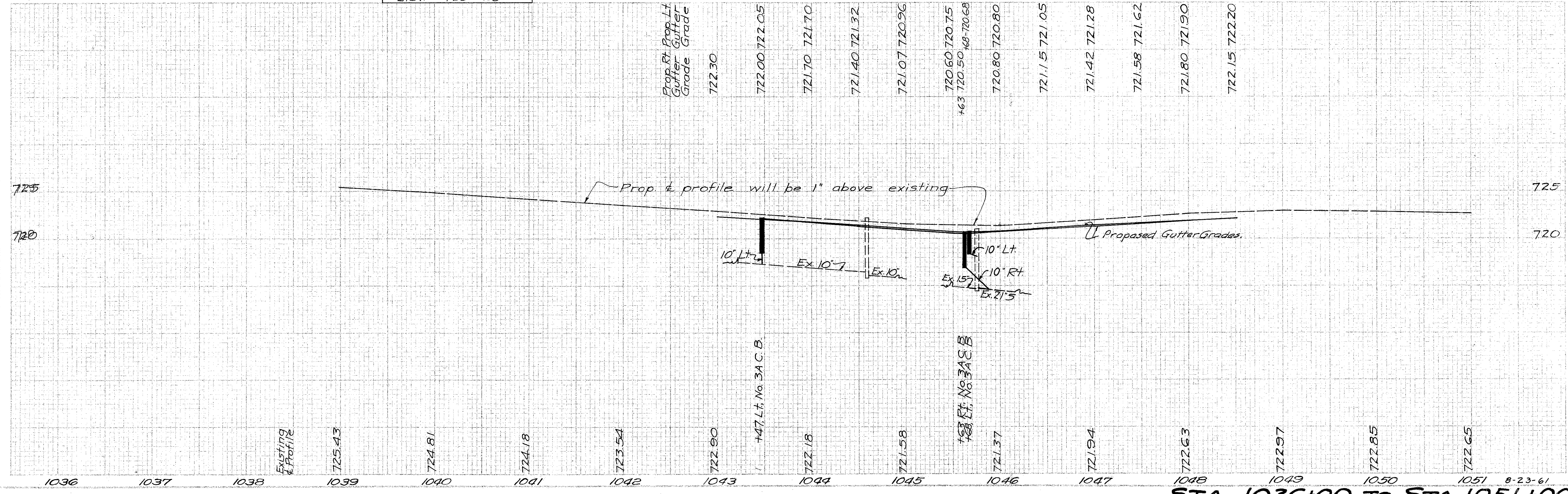


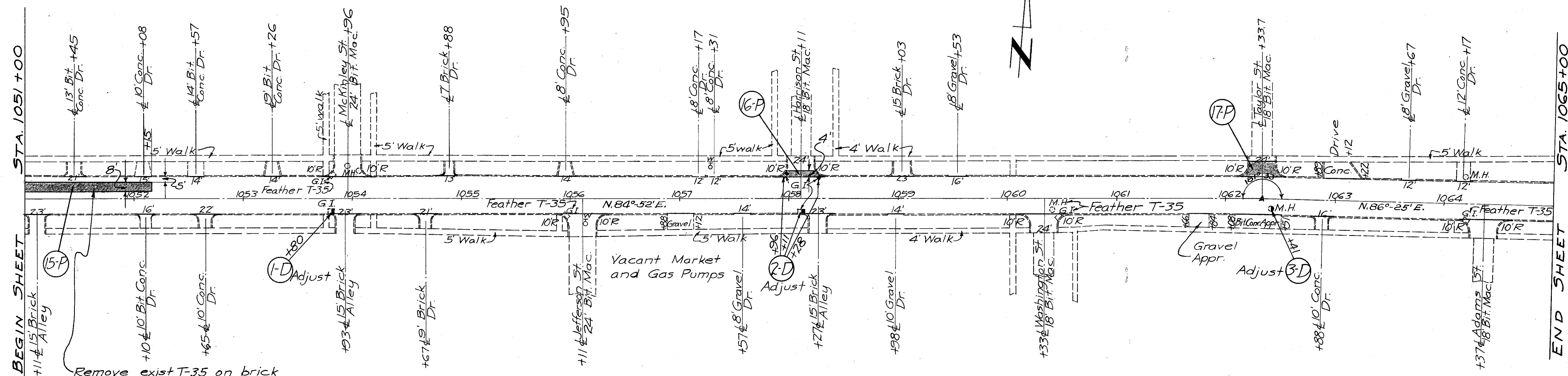
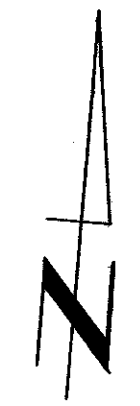
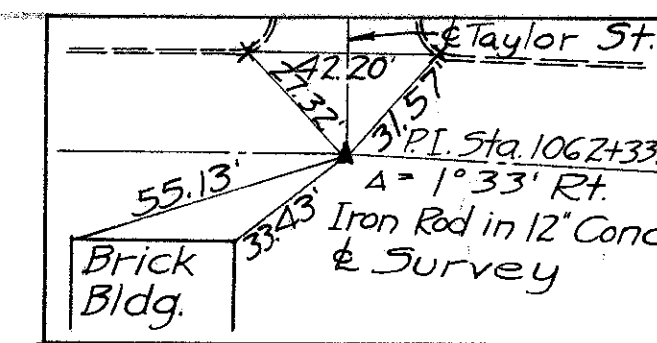
STA. 1021+00 TO STA. 1036+00



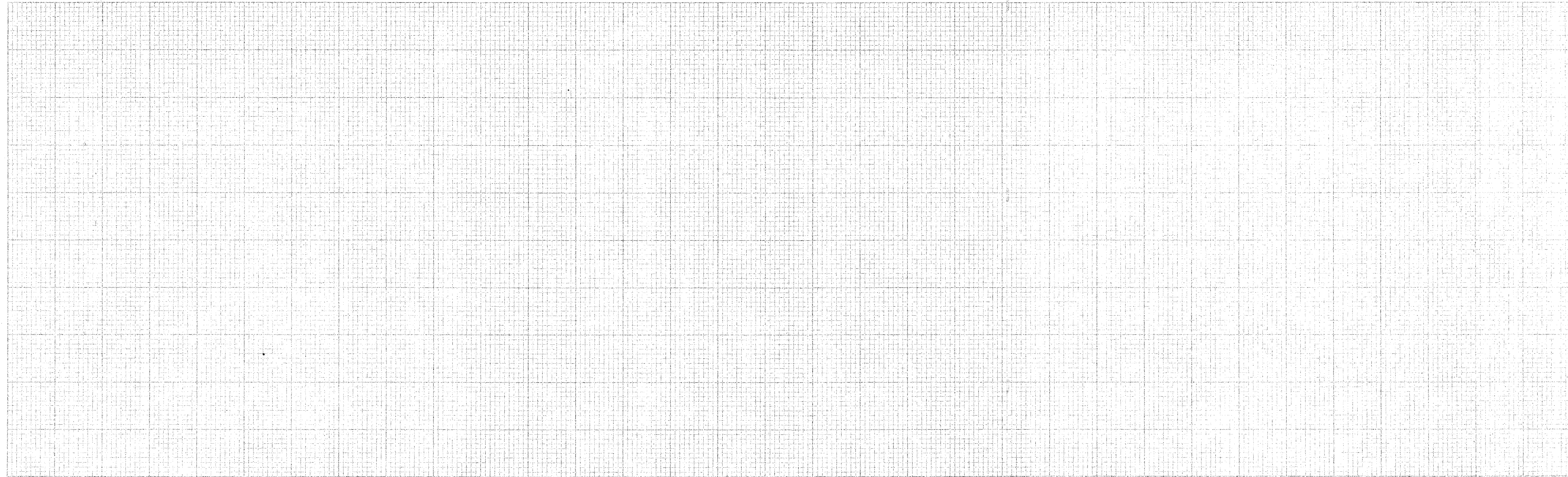
For detail 1-A, 3-A, 4-A, 9-A, 10-A, 12-A, 13-A, 10-P, 11-P, 12-P, 13-P, see sheet No. 21

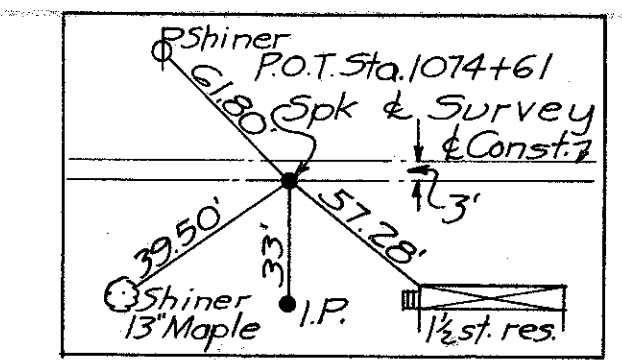
B.M. No. 10, USGS marker
 W. side City Hall
 Elev. = 723.226



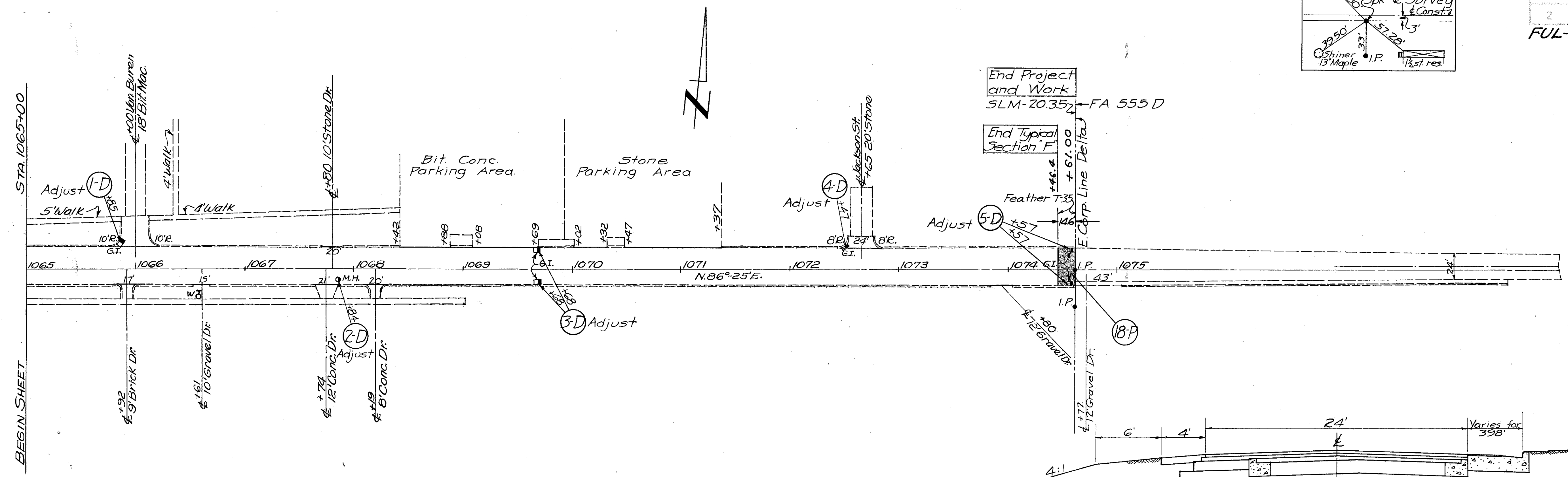


Remove exist T-35 on brick or conc. in approximate area shown above where base shows signs of failure. Replace with 8" B-70, 1/2" B-35 & 1" T-35.



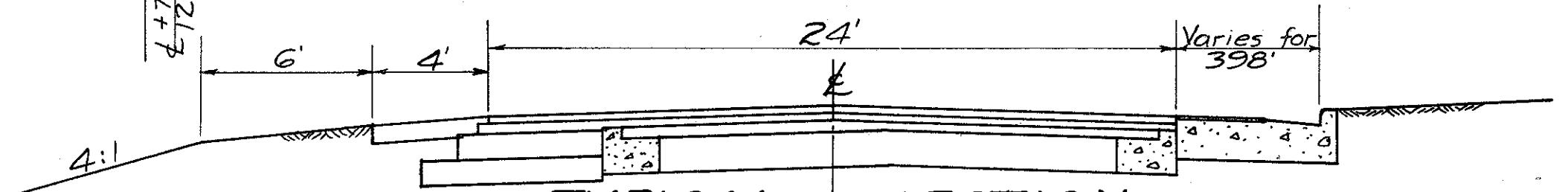


BEGIN SHEET
STA 1065+00



End Project and Work
SLM-20.352
FA 555 D

End Typical Section F



TYPICAL SECTION ADJOINING PAVEMENT
 16' Waterbound Macadam widened 2' each side with flush concrete curbs, 2" of surface treatment; then widened 4' with macadam surfaced with 2 1/2" of bituminous concrete with var widening of B-70, conc. curb and gutter for 398' on right, 4' stab shoulder on left.

1065 1066 1067 1068 1069 1070 1071 1072 1073 1074 1075

STA. 1065+00 TO STA. 1075+00