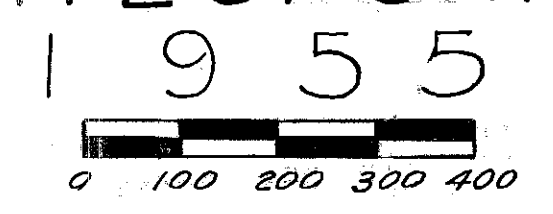


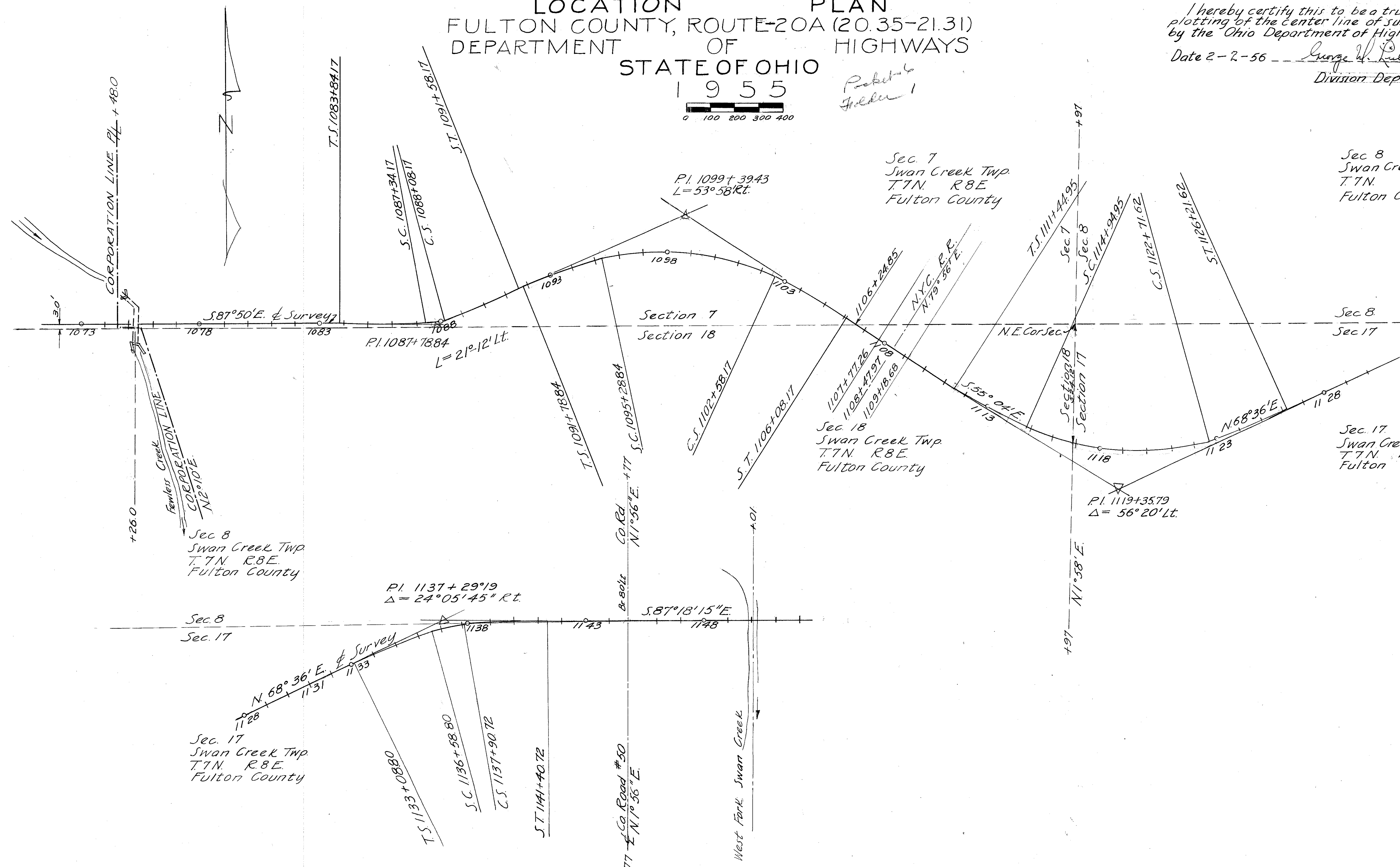
# LOCATION PLAN

FULTON COUNTY, ROUTE-20A (20.35-21.31)  
DEPARTMENT OF HIGHWAYS  
STATE OF OHIO



I hereby certify this to be a true and correct plotting of the center line of survey as determined by the Ohio Department of Highways.  
Date 2-2-56 *George W. Fisher*  
Division Deputy Director

*Robert Fisher*



Center Line Reference Monuments Will Be Set Before Or After Construction

1074+48	1079+00	1083+84.17	1087+34.17	1088+08.17	1091+58.17	1091+78.89	1091+28.89	1102+58.17	1106+08.17	1111+44.95	1114+94.95	1122+71.62	1126+21.62

1133+0880	1136+58.80	1137+90.72	1141+40.72	1146+00

Scanned June 1997

R12044 #3 A-24

Scanned  
June 1997

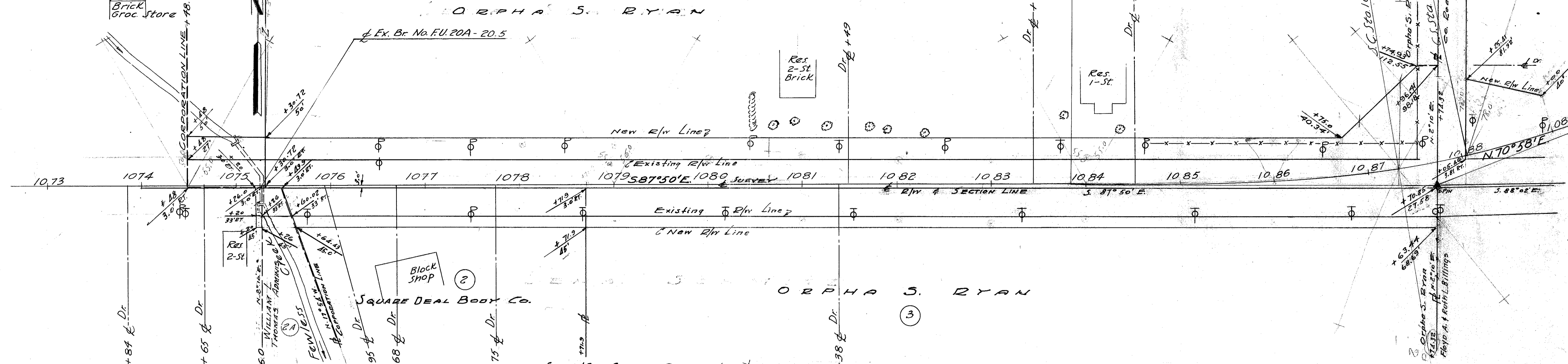
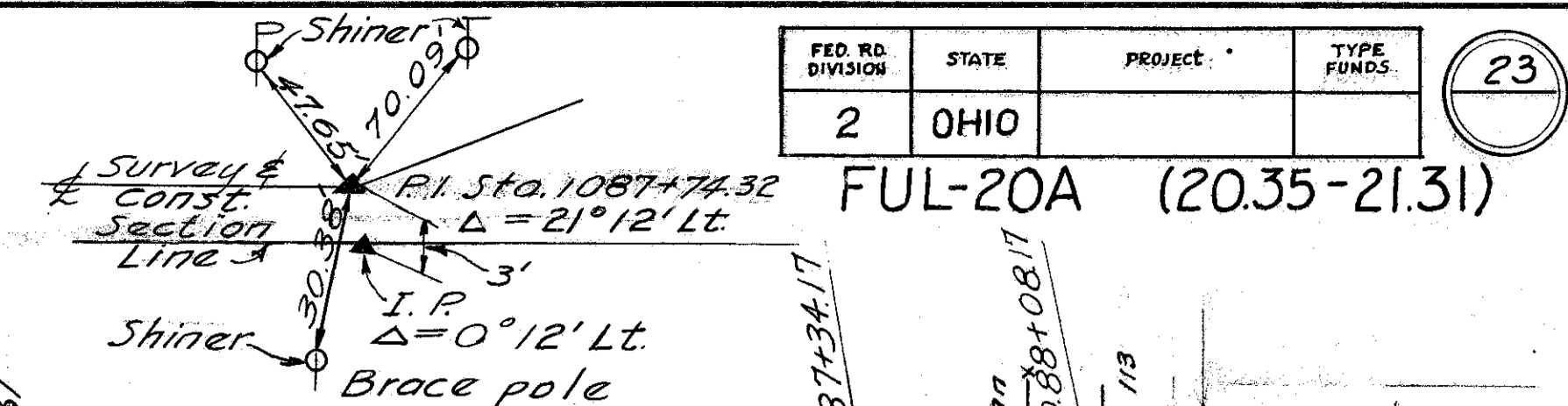
FOR ANY QUESTIONS PLEASE CONTACT ODOT DIST. 2 REAL ESTATE AT 419-353-8131

FED. RD. DIVISION	STATE	PROJECT	TYPE FUNDS	23
2	OHIO	FUL-20A (20.35-21.31)		

PROPOSED CURVE DATA  
 PI = STA. 1087+74.32  
 Δ = 5° 00' R  
 D = 5° 00'  
 Ls = 95.0'  
 Δs = 8° 45'  
 P = 7.45'  
 X = 174.86'  
 Y = 349.18'  
 Z = 17.79'

LT = 233.62'  
 ST = 116.93'  
 LC = 349.64'  
 R = 1145.92'  
 Δc = 3° 42'  
 Lc = 74.00'  
 Ts = 390.15'  
 Es = 24.60'

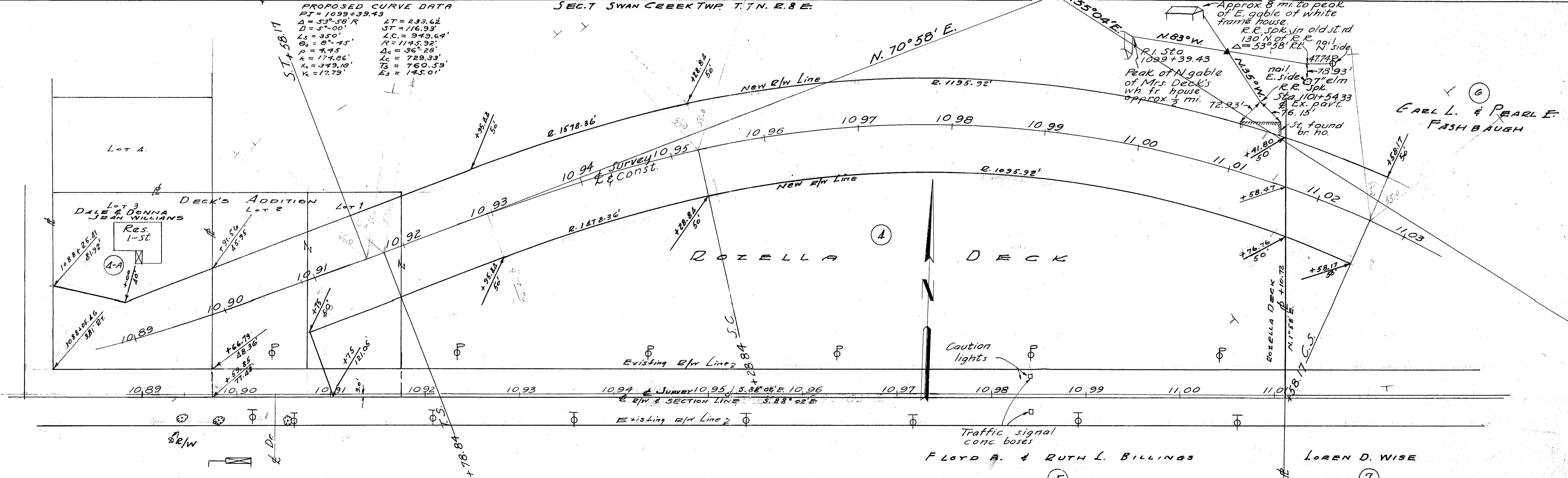
SEC. 7 SWAN CREEK TWP. T. 1 N. R. 8 E.



PROPOSED CURVE DATA  
 PI = 1099+39.43  
 Δ = 5° 58' R  
 D = 5° 00'  
 Ls = 95.0'  
 Δs = 8° 45'  
 P = 7.45'  
 X = 174.86'  
 Y = 349.18'  
 Z = 17.79'

LT = 233.62'  
 ST = 116.93'  
 LC = 349.64'  
 R = 1145.92'  
 Δc = 3° 42'  
 Lc = 74.00'  
 Ts = 390.15'  
 Es = 24.60'

SEC. 18 SWAN CREEK TWP. T. 1 N. R. 8 E.



SEC. 18 SWAN CREEK TWP. T. 1 N. R. 8 E.

R/W 1

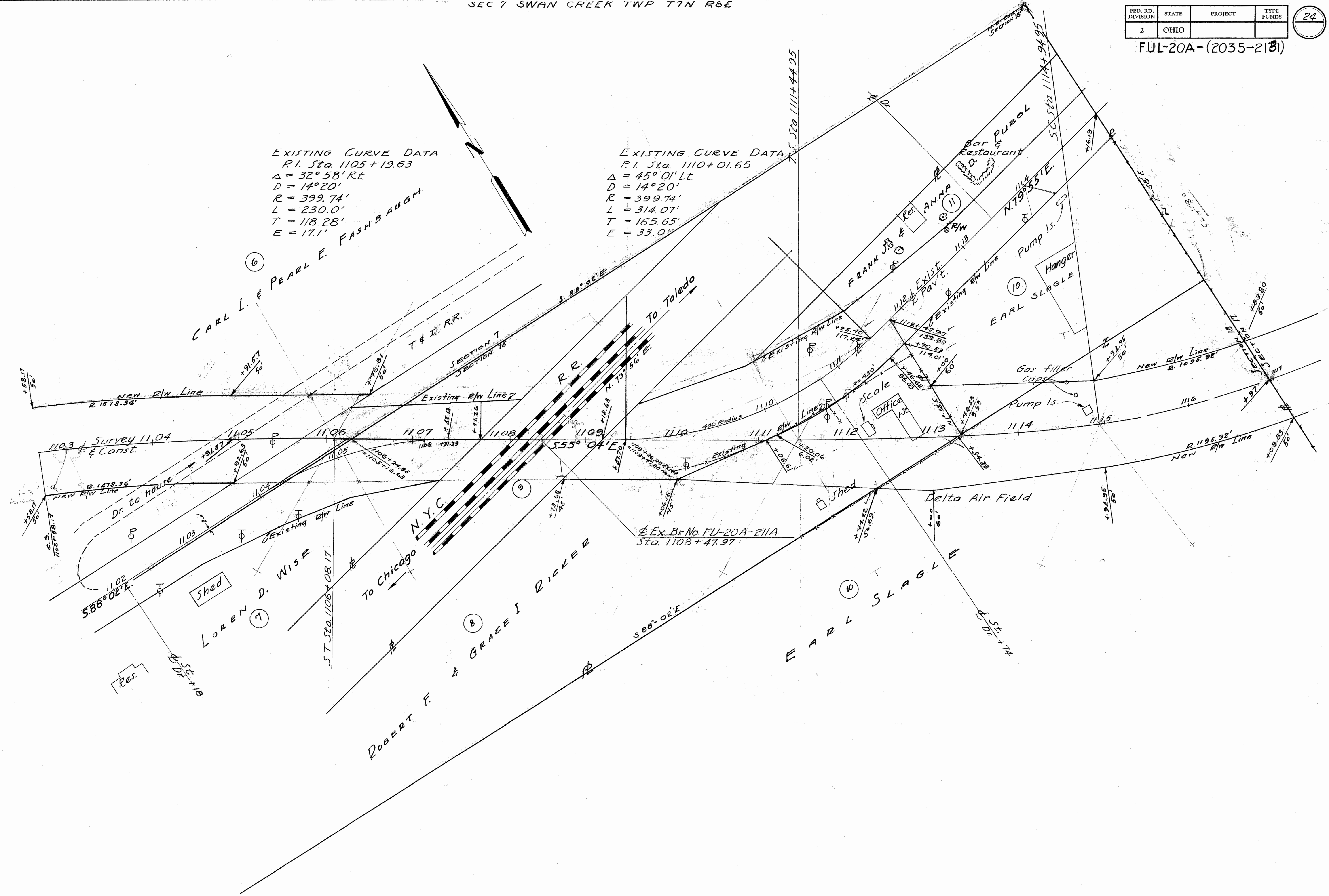
FED. RD. DIVISION	STATE	PROJECT	TYPE FUNDS
2	OHIO		

24

FUL-20A-(2035-2181)

EXISTING CURVE DATA  
 P.I. Sta 1105+19.63  
 $\Delta = 32^\circ 58' \text{ Rt}$   
 $D = 14^\circ 20'$   
 $R = 399.74'$   
 $L = 230.0'$   
 $T = 118.28'$   
 $E = 17.1'$

EXISTING CURVE DATA  
 P.I. Sta 1110+01.65  
 $\Delta = 45^\circ 01' \text{ Lt}$   
 $D = 14^\circ 20'$   
 $R = 399.74'$   
 $L = 314.07'$   
 $T = 165.65'$   
 $E = 33.0'$



Scanned June 19/17

Revised June 1997

FED. RD. DIVISION	STATE	PROJECT	TYPE FUNDS
2	OHIO		

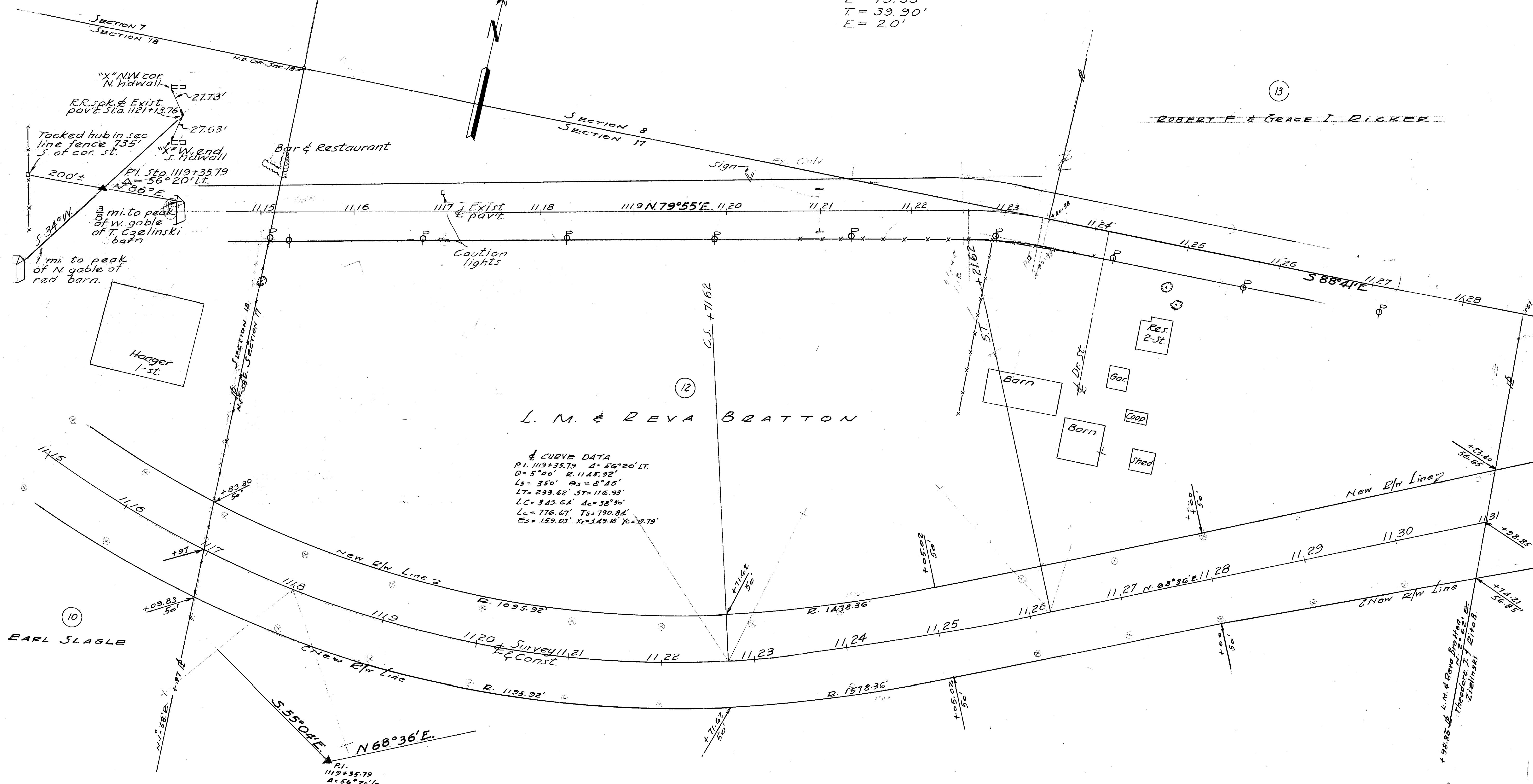
FUL-20A-(20.35-21.31)

EXIST. CURVE DATA  
 P.I. Sta 1123+01.35  
 $\Delta = 11^\circ 24' \text{ Rt}$   
 $D = 14^\circ 20'$   
 $R = 399.74'$   
 $L = 79.53'$   
 $T = 39.90'$   
 $E = 2.0'$

ROBERT F. & GRACE I. DICKER

L. M. & REVA BRATTON

4 CURVE DATA  
 P.I. 1119+35.79  $\Delta = 56^\circ 20' \text{ Lt}$   
 $D = 5^\circ 00'$   $R = 1145.92'$   
 $L_s = 350'$   $\theta_s = 8^\circ 45'$   
 $LC = 233.62'$   $ST = 116.93'$   
 $LC = 349.64'$   $\Delta_c = 38^\circ 50'$   
 $L_c = 776.67'$   $T_s = 790.84'$   
 $E_s = 159.03'$   $X_c = 349.18'$   $Y_c = 37.79'$



EARL SLAGLE

+98.85  
 L.M. & Reva Bratton  
 Therefore  
 Zielinski  
 1128.85

SEC. 8 SWAN CREEK TWP. T. 1 N. R. 8 E.

FED. RD. DIVISION	STATE	PROJECT	TYPE FUNDS
2	OHIO	FUL-20A-(20.35-21.31)	26

R/W marker  
Tacked hub  
18.32' N. of  
E ex. pav't.

P.K. nail in  
24" stump  
Sta. 1139+57.49' Lt.

P.I. Sta. 1137+29.19  
 $\Delta = 24^{\circ}05'45''$  Rt.

Approx. 100' to  
W. lightning rod  
spire on W end  
of Bratton's  
main barn.

SE. COR. CURB  
Br. about.

SW. COR. CURB  
Br. about.

POT. Sta. 1144+77.0  
 $\Delta = 0^{\circ}0'$

Survey  
Const.

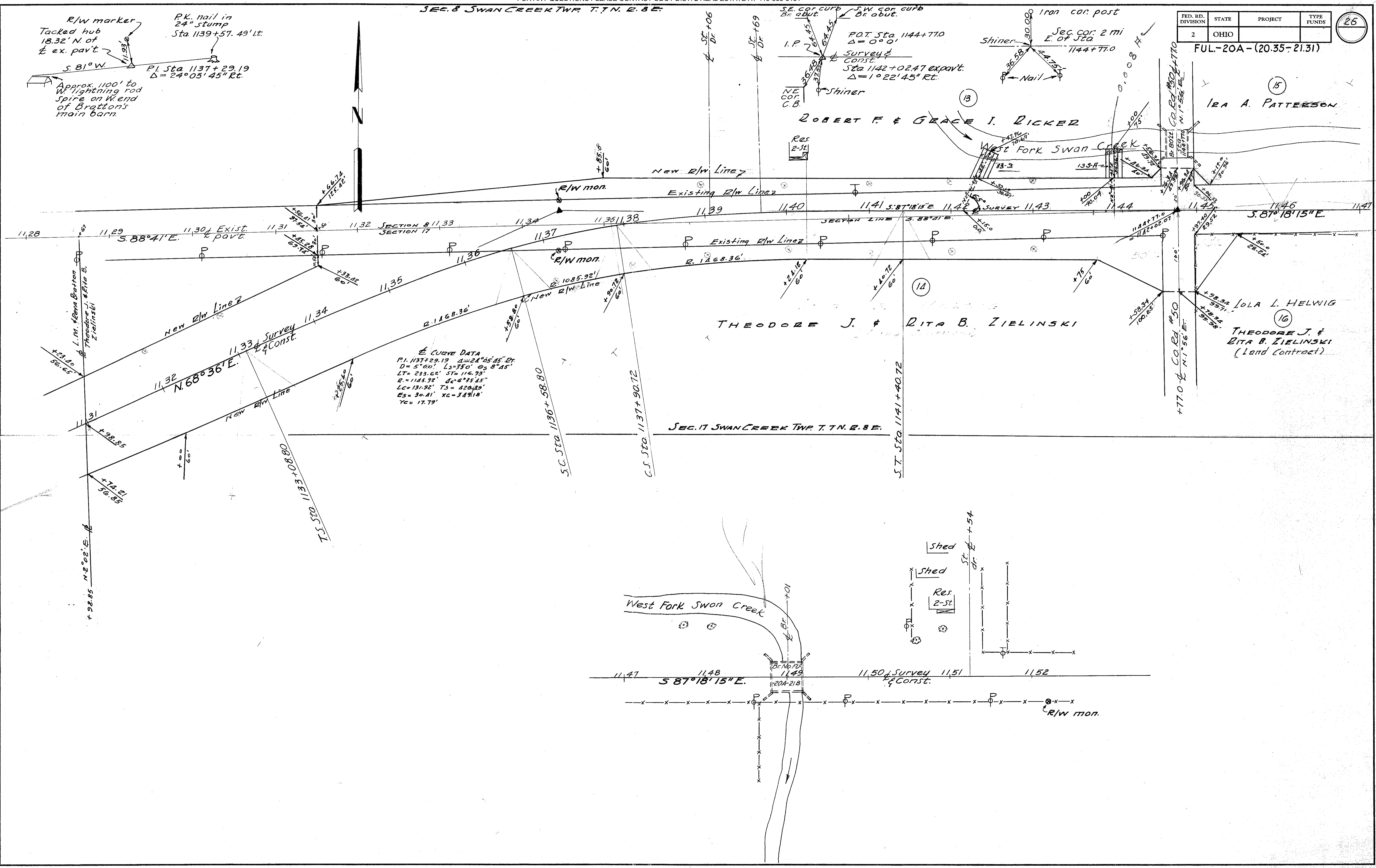
Sta. 1142+02.47 ex. pav't.  
 $\Delta = 1^{\circ}22'45''$  Rt.

Shiner

NE. COR. C.B.

Iron cor. post

Sec. cor. 2 mi  
E. of Sta.  
1144+77.0



**Curve Data**  
 P.I. 1137+29.19  $\Delta = 24^{\circ}05'45''$  Rt.  
 D = 5° 00' Ls = 350'  $\Theta = 8^{\circ}45'$   
 Lt = 233.62' St = 116.93'  
 R = 1185.92'  $\Delta = 6^{\circ}35'45''$   
 Lc = 131.92' Ts = 420.33'  
 Es = 30.81' Xc = 349.18'  
 Yc = 17.79'

West Fork Swan Creek

Shed

Shed

Res. 2-St.

1147 1148 1149  
S. 87° 18' 15" E.

1150 Survey 1151  
Const.

R/W mon.