

PERSONNEL TITLE PERSONNEL TITLE

Red Beach
Newcomb
Knappe

COUNTY FULTON

DATE Nov. 1971

S. R. US 20-A

E. qtr STONE Sec. 10

WEATHER

SEC. 15, YORK TWP T-7-N

TEMP.

DESCRIPTION

ALIGNMENT & CONTROLS

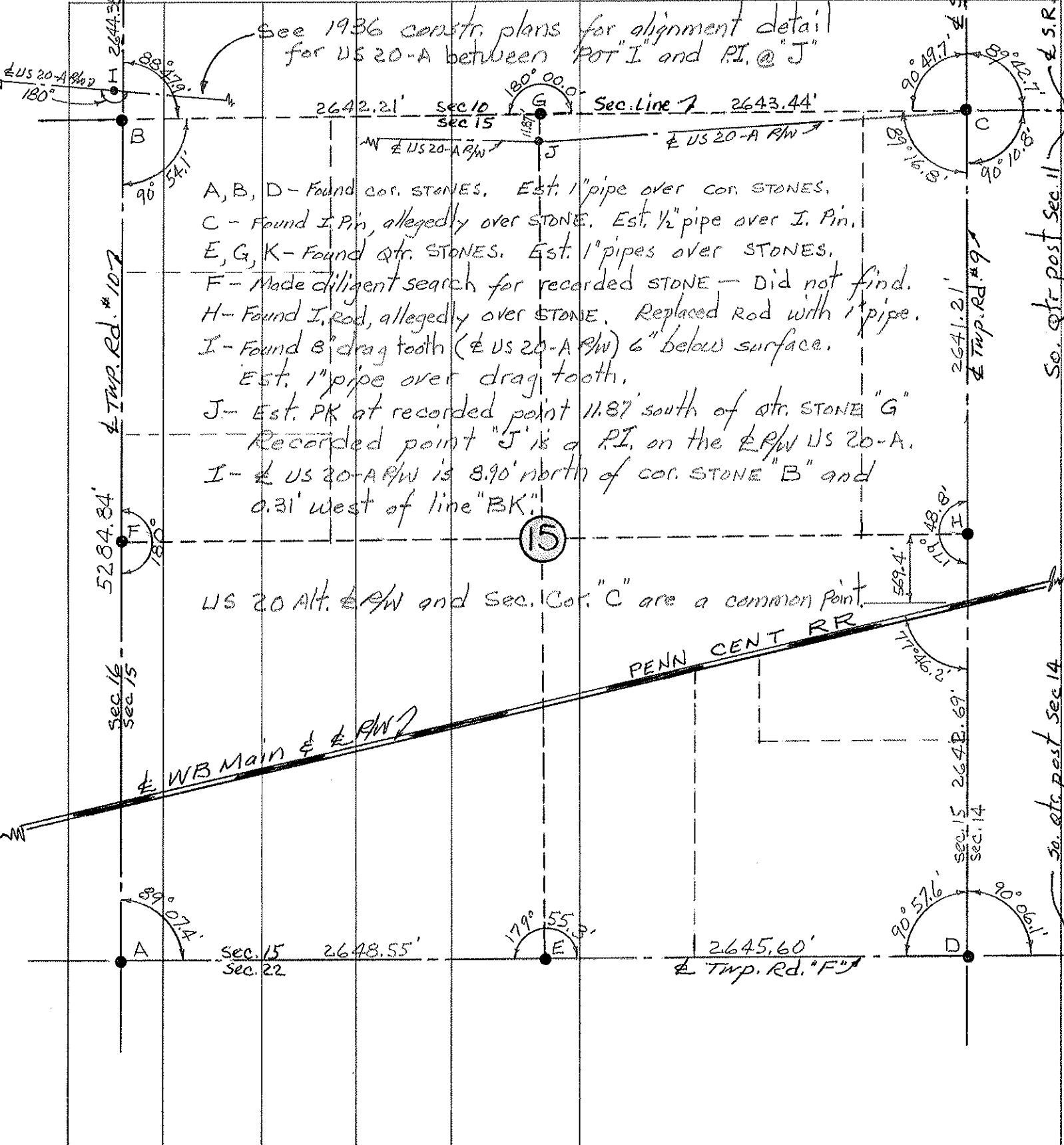
JOB NO.

LEFT

CENTER LINE

RIGHT

See 1936 constr. plans for alignment detail for US 20-A between POT "I" and P.I. @ "J"



- A, B, D - Found cor. STONES. Est. 1" pipe over cor. STONES.
- C - Found I. Pin, allegedly over STONE. Est. 1/2" pipe over I. Pin.
- E, G, K - Found qtr. STONES. Est. 1" pipes over STONES.
- F - Made diligent search for recorded STONE - Did not find.
- H - Found I. rod, allegedly over STONE. Replaced Rod with 1" pipe.
- I - Found 8" drag tooth (& US 20-A R/W) 6" below surface. Est. 1" pipe over drag tooth.
- J - Est. PK at recorded point 11.87' south of qtr. STONE "G". Recorded point "J" is a P.I. on the & R/W US 20-A.
- I - & US 20-A R/W is 8.90' north of cor. STONE "B" and 0.31' west of line "BK".

US 20 Alt. & R/W and Sec. Cor. "C" are a common Point.

PENN CENT RR

WB Main & R/W

So. qtr. post Sec. 14

So. qtr. post Sec. 11