

O.D.O.T. DISTRICT 2 SURVEY OFFICE (USE ONLY)

PERSONNEL \_\_\_\_\_

REFERENCE NO. 2

SHEET 2 OF 63

NOTES NIESE

DATE 2/26/21

ROUTE US 20A

H.C. RHOADES

WEATHER CLOUDY

COUNTY FULTON

R.C. \_\_\_\_\_

TEMP. 31°

TOWNSHIP GERMAN

SECTION 11

DWG BY NIESE PID PAVETRAIN

T 7 N R 4 E

TYPE MONUMENT MAG/WASHER

ON SURFACE - ~~BELOW~~ ON

OFFSET CL PAVEMENT 0.9' LT : ~~RT~~

11.4' TO RT EDGE PAVEMENT

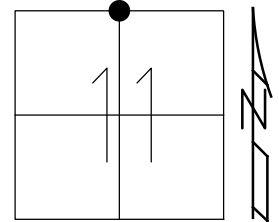
STATION: 26+34

HORIZ.DATUM: NAD83 2011

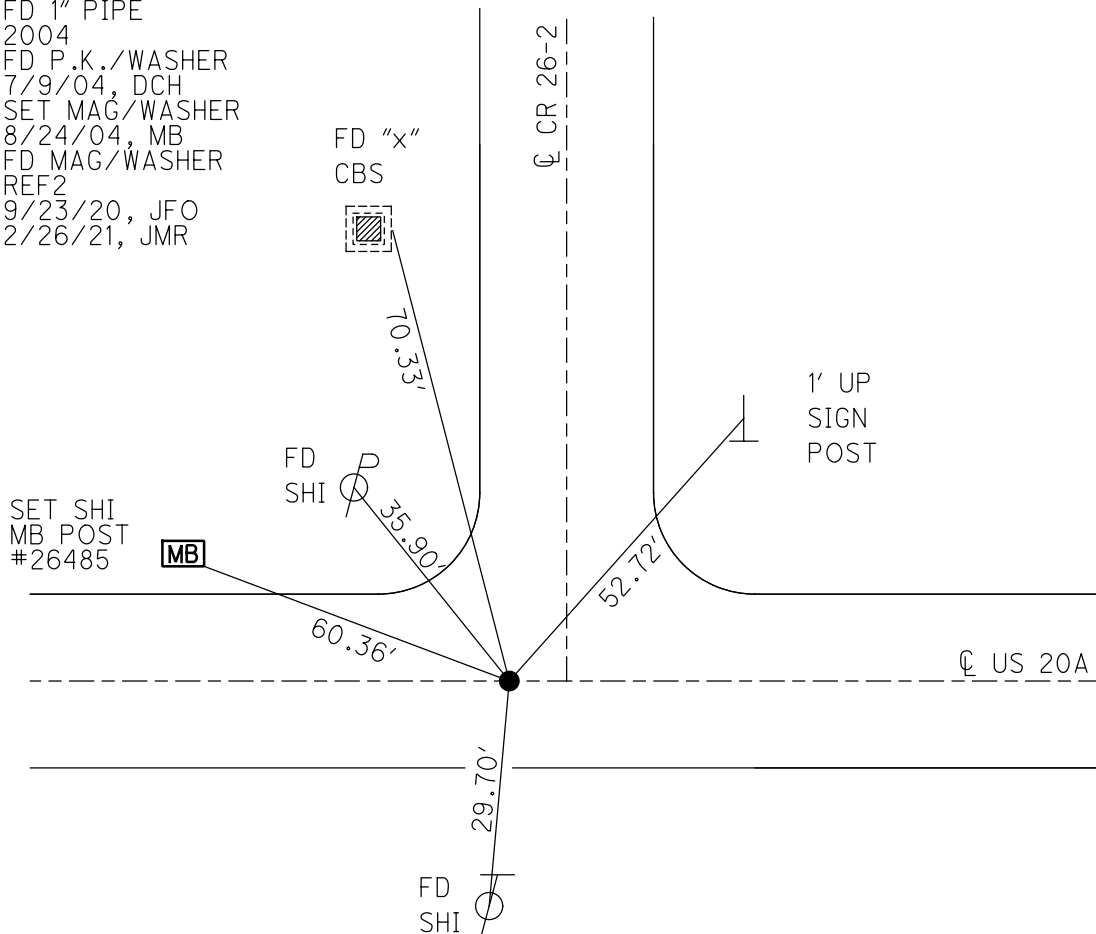
GEOID: NAVD88 2012A

GRID: NORTHING: 704971.221

EASTING: 1456581.416



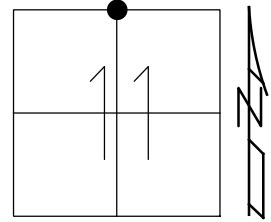
RECORD: 2004  
 FD 1" PIPE  
 2004  
 FD P.K./WASHER  
 7/9/04, DCH  
 SET MAG/WASHER  
 8/24/04, MB  
 FD MAG/WASHER  
 REF2  
 9/23/20, JFO  
 2/26/21, JMR



O.D.O.T. DISTRICT 2 SURVEY OFFICE (USE ONLY)

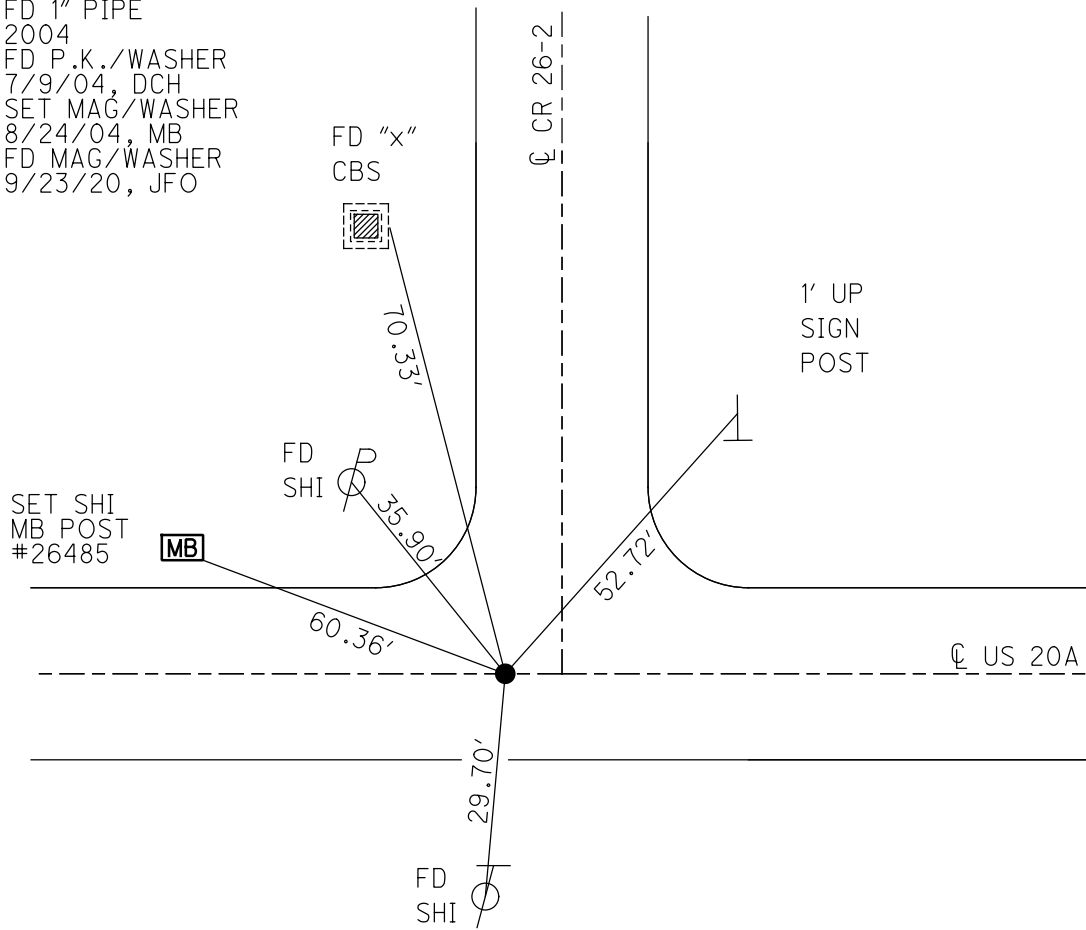
PERSONNEL \_\_\_\_\_ REFERENCE NO. 2 SHEET 2 OF 63  
 NOTES RHOADES DATE 9/23/20 ROUTE US 20A  
 H.C. O'DONNELL WEATHER SUNNY COUNTY FULTON  
 R.C. AUBLE TEMP. 62° TOWNSHIP GERMAN  
 \_\_\_\_\_ SECTION 11  
 DWG BY RHOADES PID PAVETRAIN T 7 N R 4 E

TYPE MONUMENT MAG/WASHER  
 ON SURFACE - ~~BELOW~~ ON  
 OFFSET Q PAVEMENT 0.9' LT : ~~RT~~  
11.4' TO RT EDGE PAVEMENT  
 STATION: 26+34



HORIZ.DATUM: NAD83 2011 GEOID: NAVD88 2012A  
 GRID: NORTHING: 704971.221 EASTING: 1456581.416

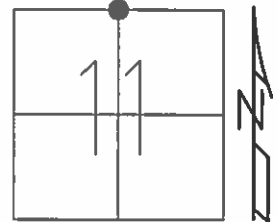
RECORD: 2004  
 FD 1" PIPE  
 2004  
 FD P.K./WASHER  
 7/9/04, DCH  
 SET MAG/WASHER  
 8/24/04, MB  
 FD MAG/WASHER  
 9/23/20, JFO



O.D.O.T. DISTRICT 2 SURVEY OFFICE (USE ONLY)

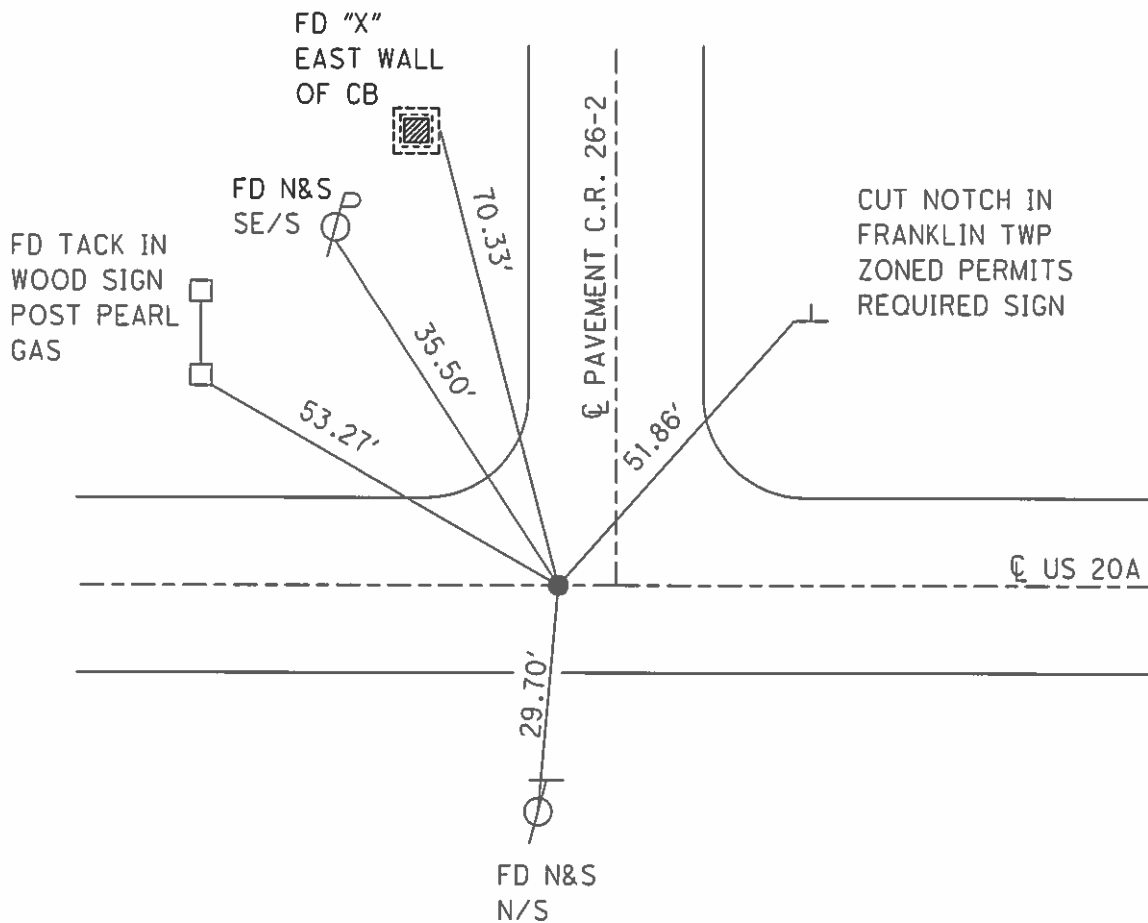
PERSONNEL \_\_\_\_\_ REFERENCE NO. 2 SHEET 2 OF 61  
 NOTES HOMAN DATE 7/9/04 ROUTE US 20A  
 H.C. HUSS WEATHER SUNNY COUNTY FULTON  
 R.C. NUHFER TEMP. 70° TOWNSHIP GERMAN  
 SECTION 11  
 T 7 N R 4 E

TYPE MONUMENT P.K./WASHER  
 ON SURFACE - ~~BELOW~~ ON \_\_\_\_\_  
 LEFT-~~C~~ PAV'T RIGHT \_\_\_\_\_ 0.9'  
11.4' ~~T~~ R ~~O~~ R T EDGE PAVEMENT  
 S.L.M. \_\_\_\_\_ 26+34  
 GRID: NORTHING: \_\_\_\_\_ EASTING: \_\_\_\_\_



RECORD: 2004  
 FD 1" PIPE AT SURFACE

SET MAG/WASHER  
 8-24-04, MB



O.D.O.T. DISTRICT 2 SURVEY OFFICE

PERSONNEL \_\_\_\_\_

REFERENCE NO. 2

SHEET 2 OF 15

NOTES HOMAN

DATE 7-09-04

ROUTE S.R. U.S. -20A

H.C. HUSS

WEATHER SUNNY

COUNTY FULTON

R.C. NUHFER

TEMP. 70°

TOWNSHIP GERMAN

SECTION 11

T 7 N R 4 E

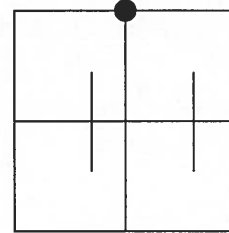
TYPE MONUMENT PK & WASHER

ON SURFACE ~~-BELOW~~ ON \_\_\_\_\_

LEFT ~~-& PART RIGHT~~ 0.9' LT

11.4 TO RT EDGE PAVEMENT

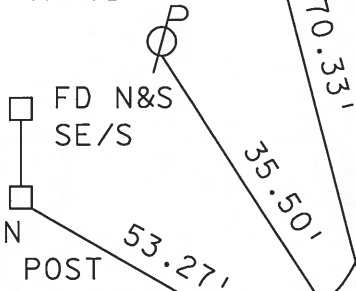
S.L.M. 26+34



RECORD:  
FD: 1" PIPE AT SURFACE

SET MAG NAIL  
& WASHER  
8-24-04  
MB

FD "X"  
EAST WALL  
OF CB



CUT NOTCH IN  
FRANKLIN TWP  
ZONED PERMITS  
REQUIRED SIGN

FD TACK IN  
WOOD SIGN POST  
PEARL GAS

☉ PAVEMENT C.R. 26-2

51.86'

☉ PAVEMENT

U.S. 20-A

29.70'

FD N&S  
N/S

# O.D.O.T. DISTRICT 2 SURVEY OFFICE

PERSONNEL

REFERENCE NO. 2

SHEET 2 OF \_\_\_\_\_

NOTES Lo-HERE

H.C. CANTERBURY

R.C. Hermiller

DATE 5-18-94

WEATHER Nice

TEMP. +50°

ROUTE S.R. US-20A

COUNTY Fulton

TOWNSHIP German

SECTION 11

T 7 N R 4 E

TYPE MONUMENT Sm R.R. Spike

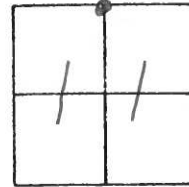
ON SURFACE - BELOW Yes

LEFT- & PAV'T. - RIGHT 0.9 Lt

11.7 TO Rt EDGE PAVEMENT

S.L.M. 26+34

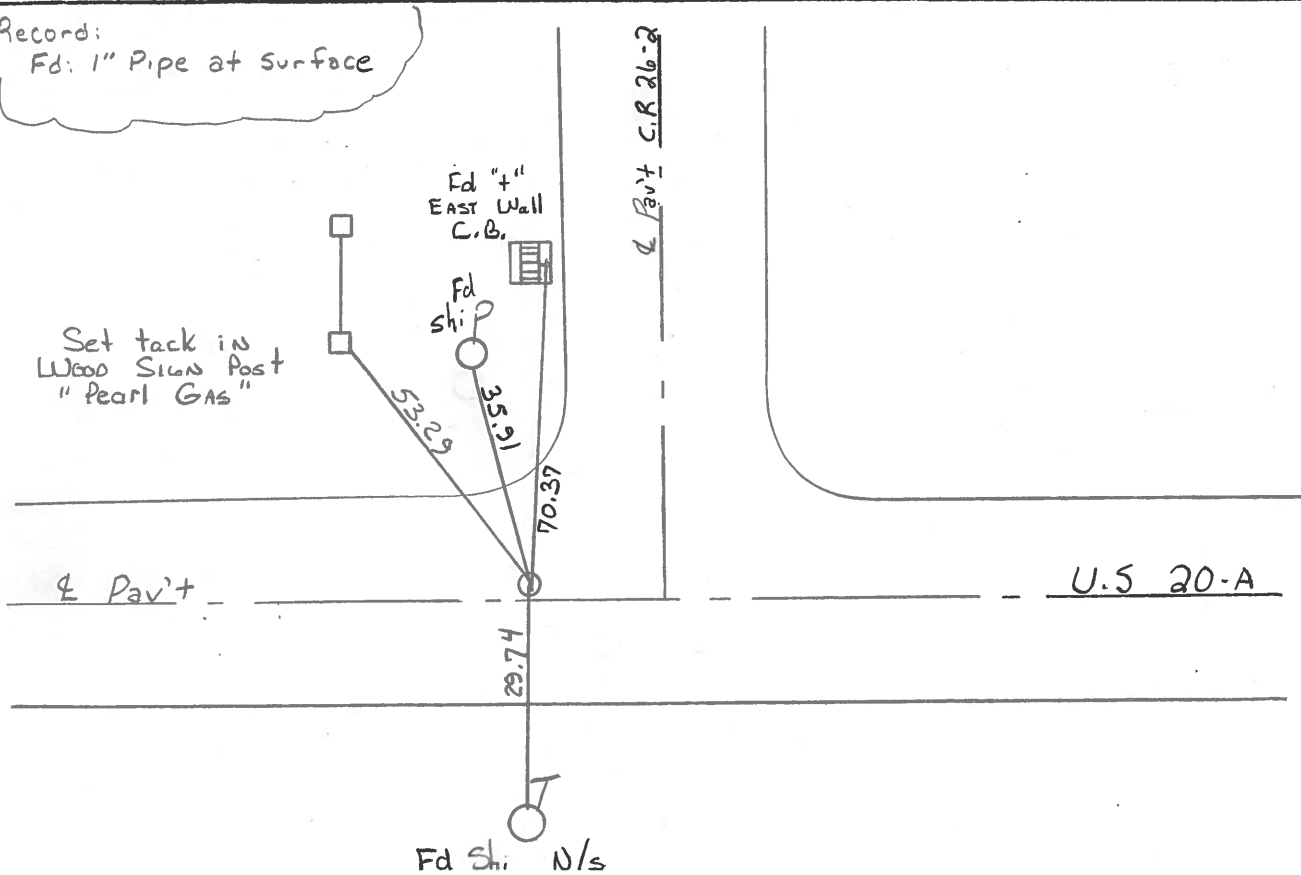
Set P.K./WASHER  
7-29-94  
C.L.



Records:

Fd: 1" Pipe at surface

Set tack in  
Wood Sign Post  
"Pearl Gas"



County FULTON S.R. US-20A

Date JAN 26, 1983

Township GERMAN

Weather OVERCAST

Section 11

Temp. +20°

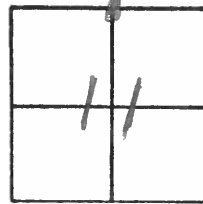
T7N, R4E

Personnel HOFFMAN

#2

E

CREW



Fd: 1" PIPE AT SURFACE

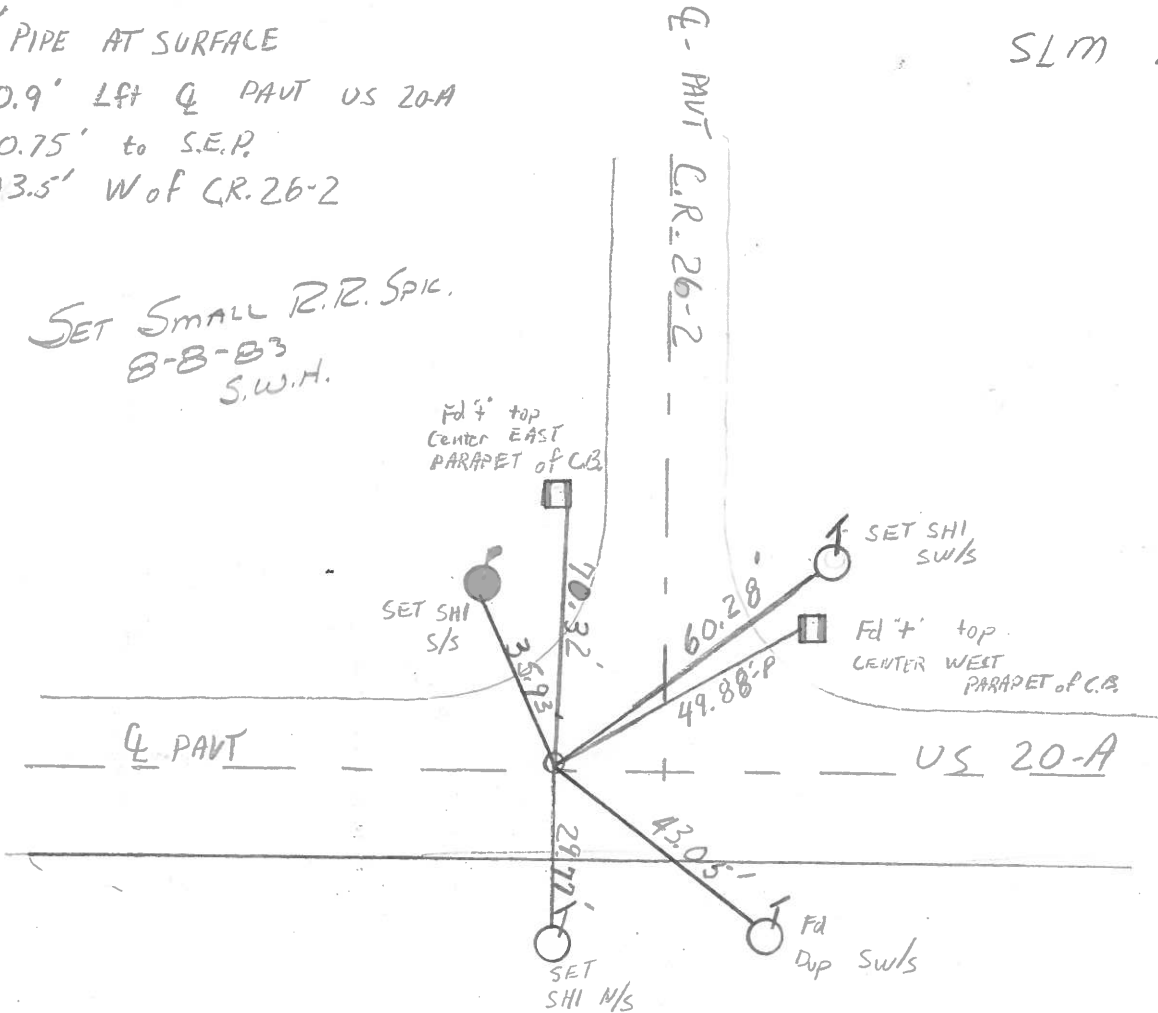
0.9' Lft Q PAVT US 20-A

10.75' to S.E.P.

13.5' W of C.R. 26-2

SLM 26+28

SET SMALL R.R. SPIC.  
B-B-B3  
S.W.H.



PERSONNEL TITLE PERSONNEL TITLE

Red Beach

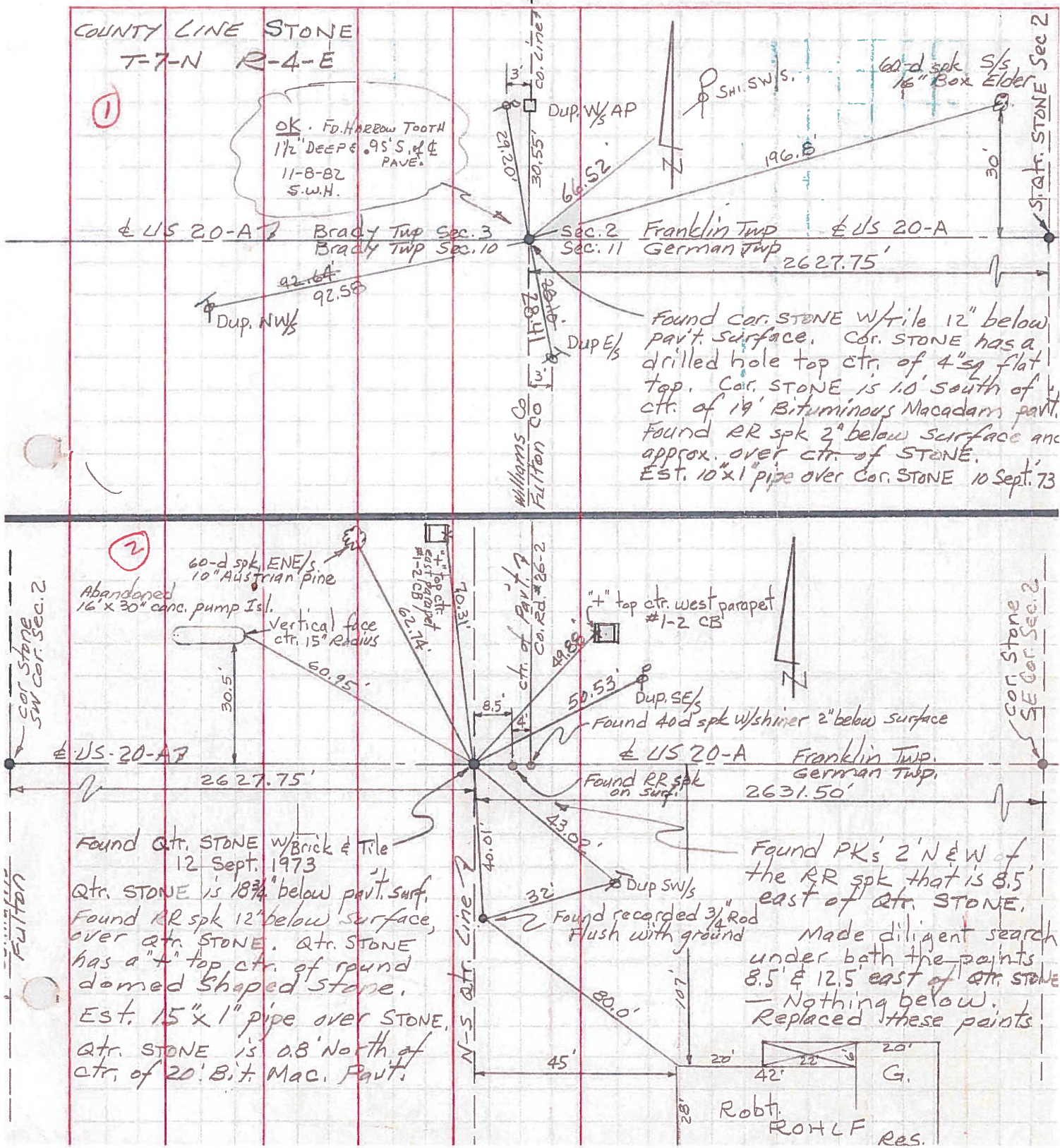
COUNTY Williams - Fulton DATE Sept '73

Knape  
Newcomb

S. R. US 20-A WEATHER \_\_\_\_\_

SEC. Brady - Franklin - German TEMP. \_\_\_\_\_

DESCRIPTION CONTROL POINTS JOB NO. \_\_\_\_\_



Robt. ROHLF Res.



PERSONNEL	TITLE	PERSONNEL	TITLE	COUNTY	<u>Fulton</u>	DATE	<u>Aug. 15, 1973</u>
<u>Tomsic</u>		<u>Boyle</u>		S. R.	<u>U.S. 20A</u>	WEATHER	
<u>Newser</u>				SEC.	<u>German TWP.</u>	TEMP.	
<u>Granata</u>							
<u>Vanyo</u>							

DESCRIPTION \_\_\_\_\_ LEFT \_\_\_\_\_ CENTER LINE \_\_\_\_\_ RIGHT \_\_\_\_\_ JOB NO. \_\_\_\_\_

