

O.D.O.T. DISTRICT 2 SURVEY OFFICE (USE ONLY)

PERSONNEL

REFERENCE NO. 3

SHEET 3 OF 63

NOTES NIESE

DATE 2/26/21

ROUTE US 20A

H.C. RHOADES

WEATHER CLOUDY

COUNTY FULTON

R.C. \_\_\_\_\_

TEMP. 31°

TOWNSHIP GERMAN

SECTION 12

DWG BY NIESE PID PAVETRAIN

T 7 N R 4 E

TYPE MONUMENT MAG/WASHER

ON SURFACE - ~~BELOW~~ ON

OFFSET CL PAVEMENT 5.1' ~~LF~~ : RT

4.9' TO RT EDGE PAVEMENT

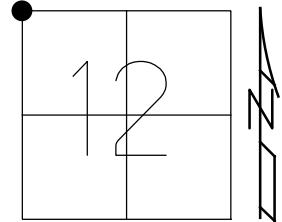
STATION: 52+73

HORZ. DATUM: NAD83 2011

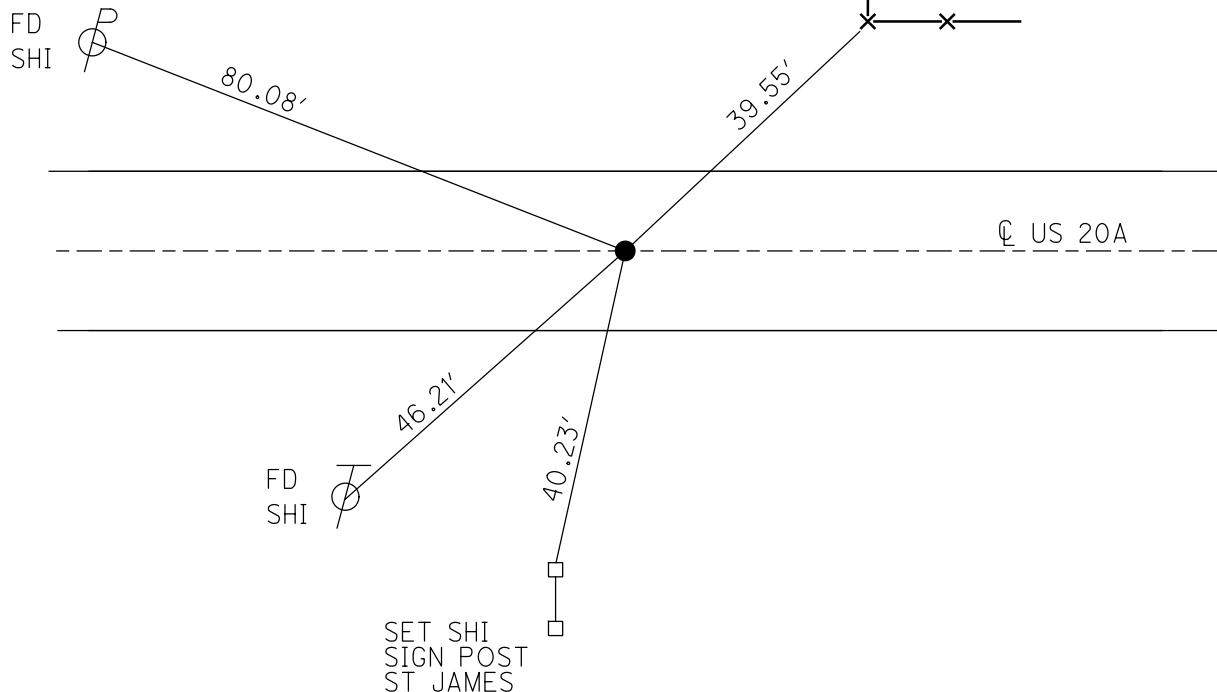
GEOID: NAVD88 2012A

GRID: NORTHING: 704912.479

EASTING: 1459212.894



RECORD:  
 FD 1" IPIPE  
 1" DOWN  
 2004  
 FD P.K./WASHER  
 7/9/04, DCH  
 SET MAG/WASHER  
 8/24/04, MB  
 FD MAG/WASHER  
 REF3  
 9/23/20, JFO  
 2/26/21, JMR



O.D.O.T. DISTRICT 2 SURVEY OFFICE (USE ONLY)

PERSONNEL \_\_\_\_\_ REFERENCE NO. 3 SHEET 3 OF 63

NOTES RHOADES DATE 9/23/20 ROUTE US 20A  
 H.C. O'DONNELL WEATHER SUNNY COUNTY FULTON  
 R.C. AUBLE TEMP. 62° TOWNSHIP GERMAN

DWG BY RHOADES PID PAVETRAIN SECTION 12  
 T 7 N R 4 E

TYPE MONUMENT MAG/WASHER

ON SURFACE - ~~BELOW~~ ON \_\_\_\_\_

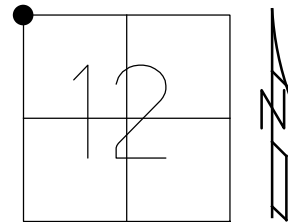
OFFSET  $\odot$  PAVEMENT 5.1'  $\pm$  : RT

4.9' TO RT EDGE PAVEMENT

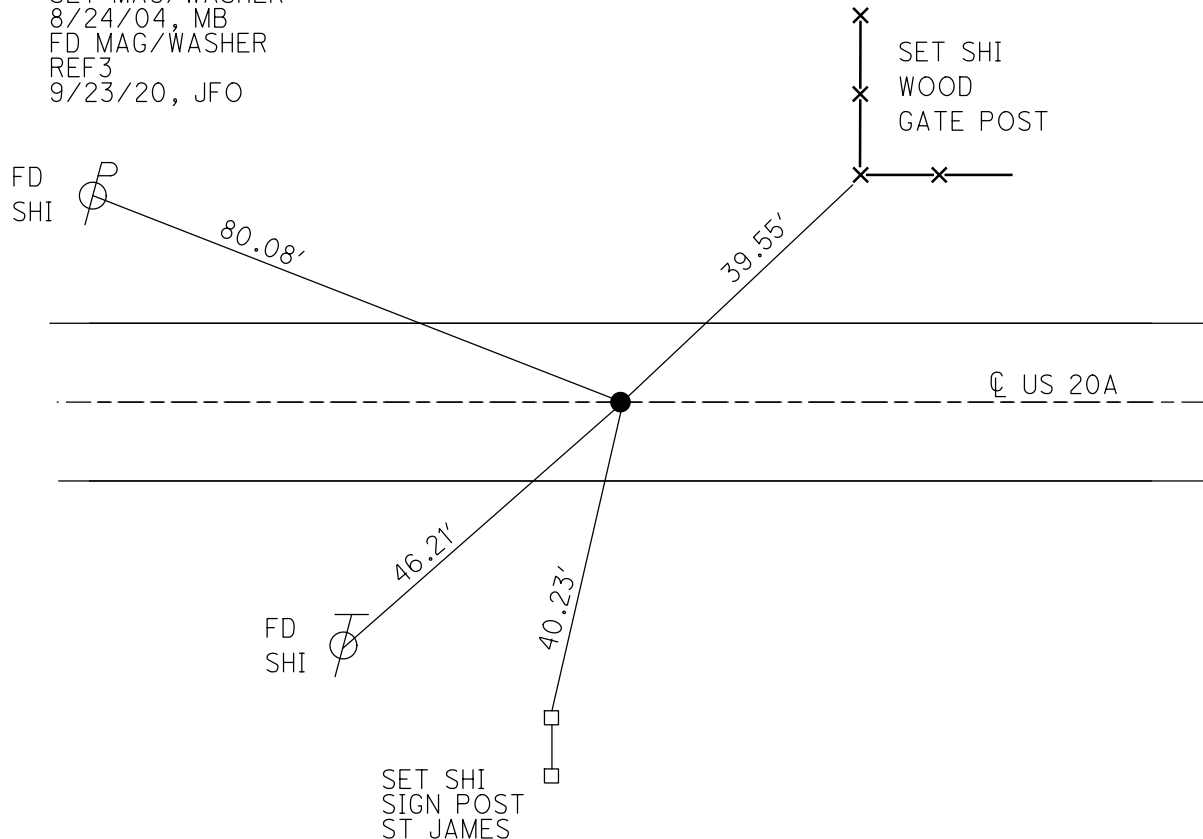
STATION: 52+73

HORZ. DATUM: NAD83 2011 GEOID: NAVD88 2012A

GRID: NORTHING: 704912.479 EASTING: 1459212.894



RECORD:  
 FD 1" IPIPE  
 1" DOWN  
 2004  
 FD P.K./WASHER  
 7/9/04, DCH  
 SET MAG/WASHER  
 8/24/04, MB  
 FD MAG/WASHER  
 REF3  
 9/23/20, JFO

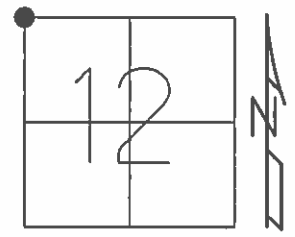


**O.D.O.T. DISTRICT 2 SURVEY OFFICE (USE ONLY)**

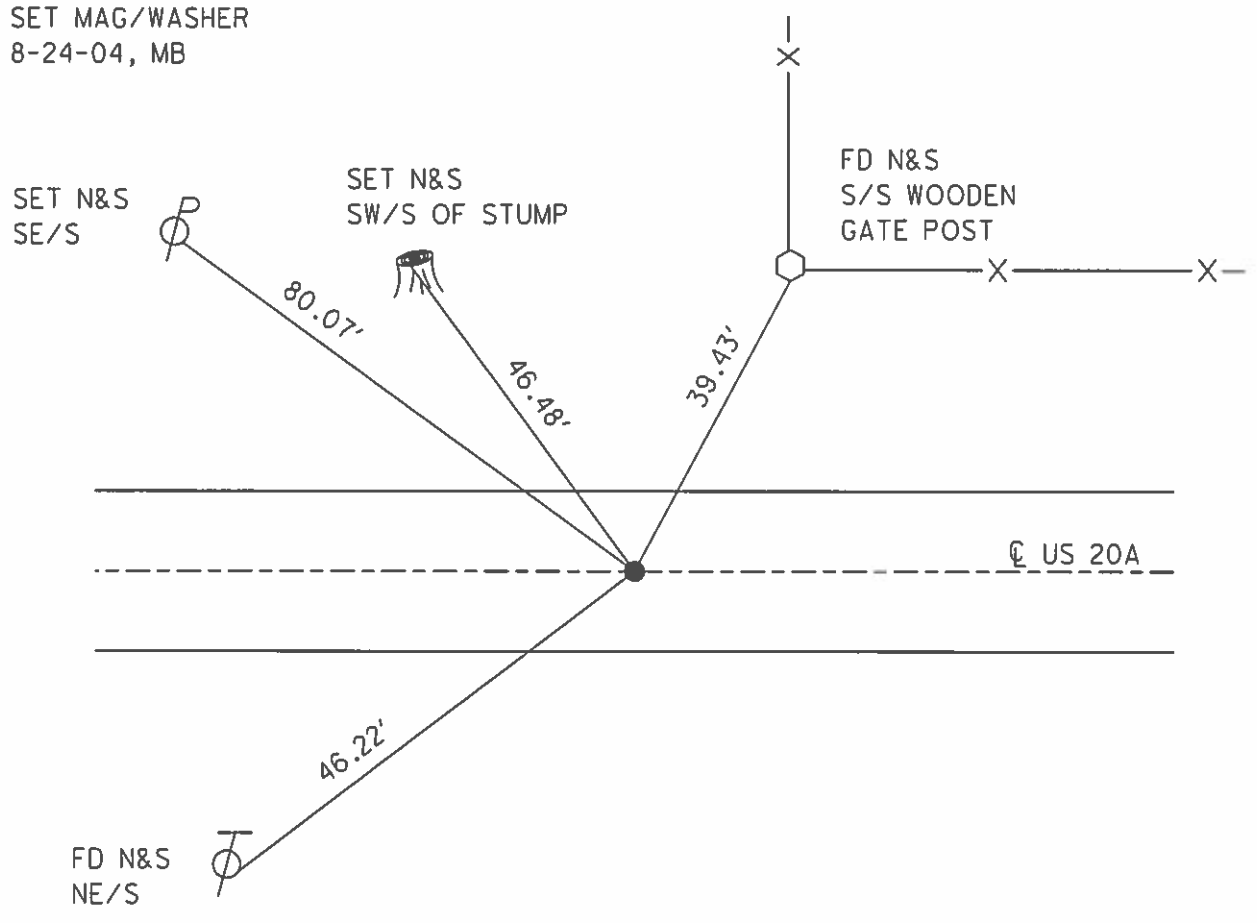
PERSONNEL \_\_\_\_\_ REFERENCE NO. 3 SHEET 3 OF 61

NOTES	<u>HOMAN</u>	DATE	<u>7/9/04</u>	ROUTE	<u>US 20A</u>
H.C.	<u>HUSS</u>	WEATHER	<u>SUNNY</u>	COUNTY	<u>FULTON</u>
R.C.	<u>NUHFER</u>	TEMP.	<u>75°</u>	TOWNSHIP	<u>GERMAN</u>
				SECTION	<u>12</u>
					<u>T 7 N R 4 E</u>

TYPE MONUMENT P.K./WASHER  
 ON SURFACE - ~~BELOW~~ ON  
~~LEFT-C~~ PAV'T-RIGHT 5.1'  
4.9' TO RT EDGE PAVEMENT  
 S.L.M. 52+73  
 GRID: NORTHING: \_\_\_\_\_ EASTING: \_\_\_\_\_



RECORD: 2004  
 FD 1" PIPE  
 1" BELOW SURFACE  
 SET MAG/WASHER  
 8-24-04, MB



O.D.O.T. DISTRICT 2 SURVEY OFFICE

PERSONNEL

REFERENCE NO. 3

SHEET 3 OF 15

NOTES HOMAN

DATE 7-09-04

ROUTE S.R. U.S.-20A

H.C. HUSS

WEATHER SUNNY

COUNTY FULTON

R.C. NUHFER

TEMP. 75°

TOWNSHIP GERMAN

SECTION 12

T 7 N R 4 E

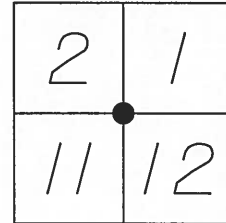
TYPE MONUMENT PK & WASHER

ON SURFACE ~~BELOW~~ ON \_\_\_\_\_

~~LEFT & PART RIGHT~~ 5.1' RT

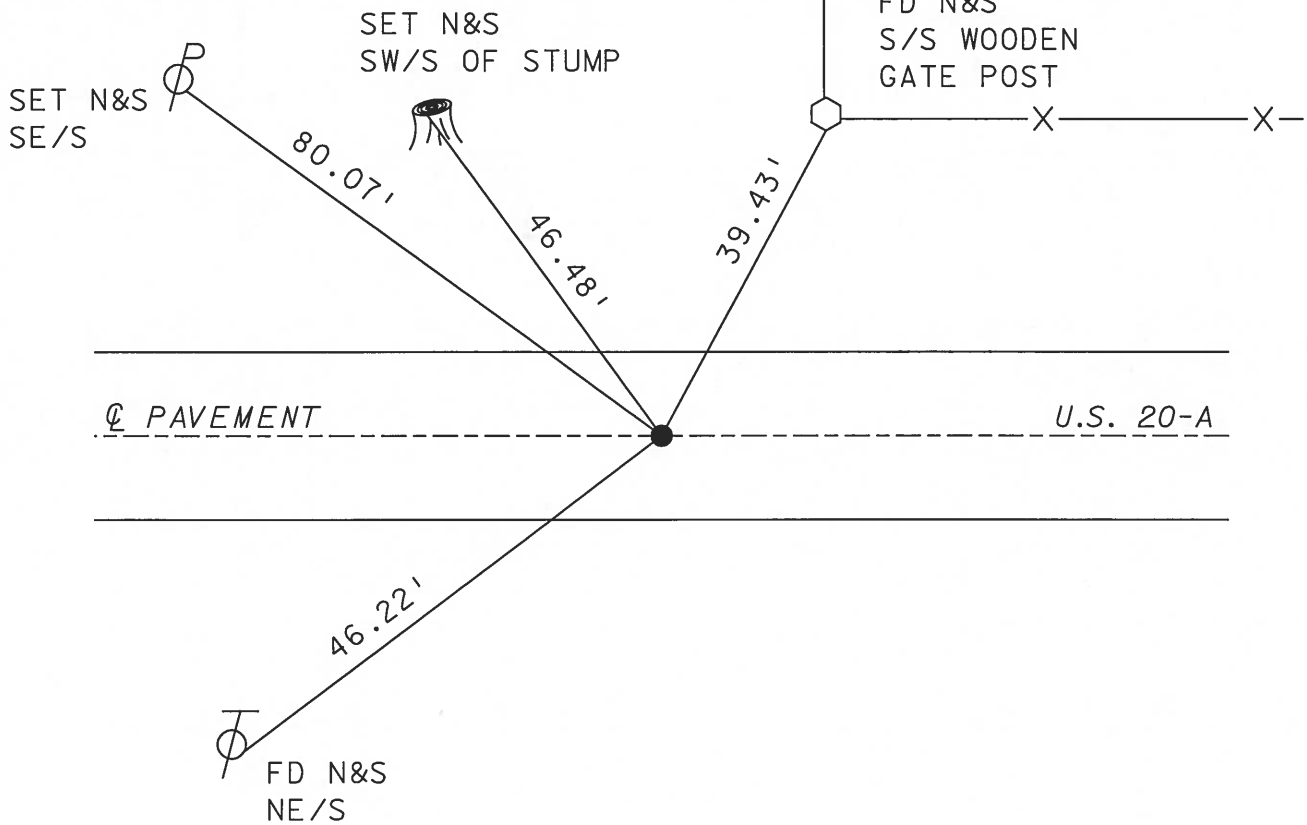
4.9 TO RT. EDGE PAVEMENT

S.L.M. 52+73



RECORD:  
FD: 1" PIPE, 1" BELOW SURFACE

SET MAG NAIL  
& WASHER  
8-24-04  
MB



# O.D.O.T. DISTRICT 2 SURVEY OFFICE

PERSONNEL \_\_\_\_\_

REFERENCE NO. 3

SHEET 3 OF \_\_\_\_\_

NOTES LOEHRKE

H.C. CANTONBURG

R.C. Hermiller

DATE 5-18-94

WEATHER Nice

TEMP. +54

ROUTE S.R. U.S. 20-A

COUNTY Fulton

TOWNSHIP German

SECTION 12

T 7 N R 4 E

TYPE MONUMENT Sm R.R. Spike Set P.K./WASHER

ON SURFACE - BELOW Yes 7-29-94

LEFT - & PAW'T. - RIGHT 5.0'

5.4 TO Rt EDGE PAVEMENT

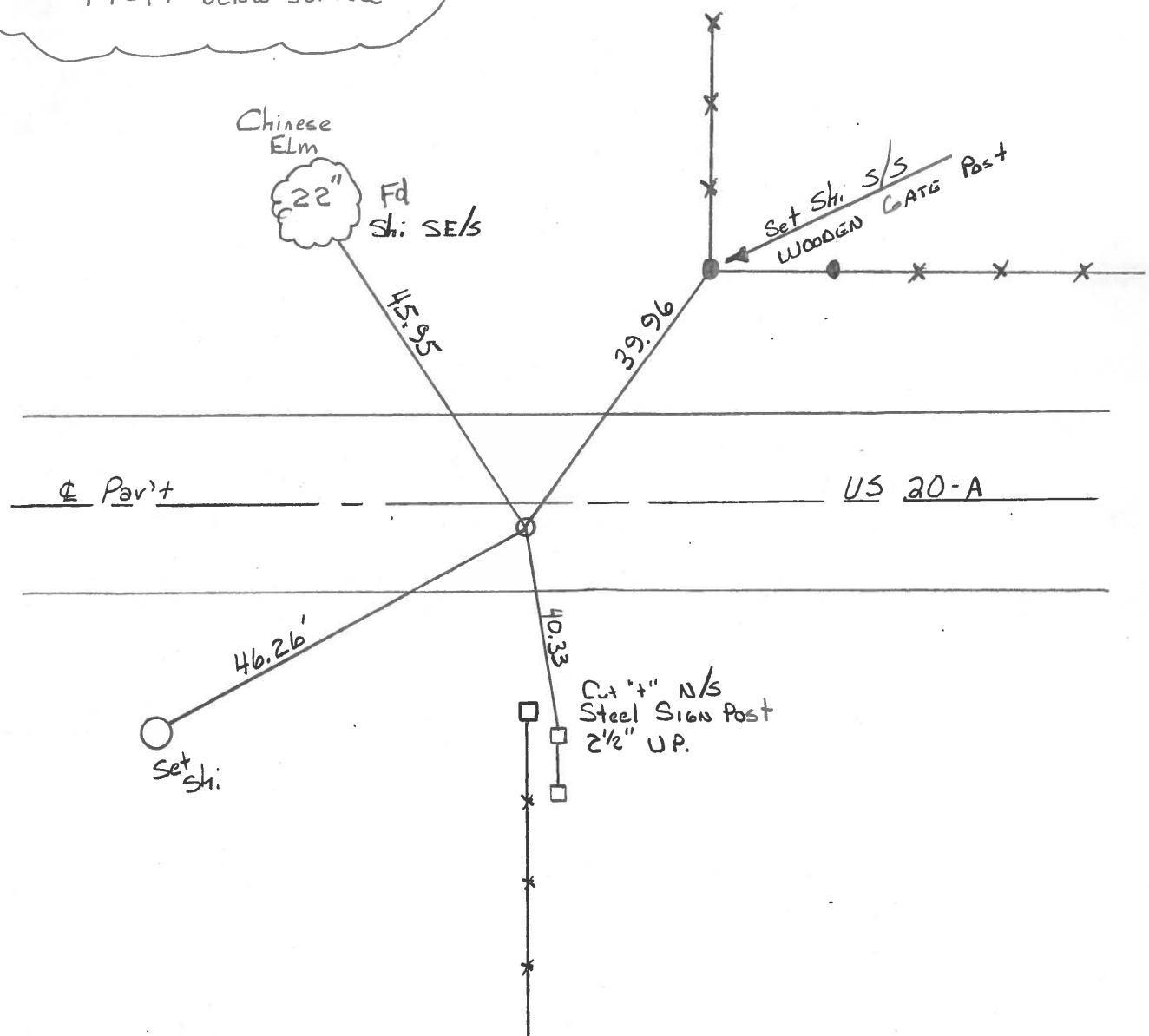
S.L.M. 52+73

7-29-94  
CL

2	1
11	12



Record  
Fd: 1" pipe, 1" below Surface



County FULTON S.R. US-20-A

Date JAN 26-1983

Township GERMAN

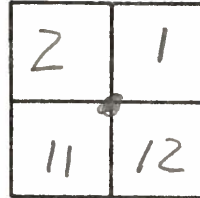
Weather OVERCAST

Section 12

Temp. + 20°

T7N, R4E

Personnel HOFFMAN



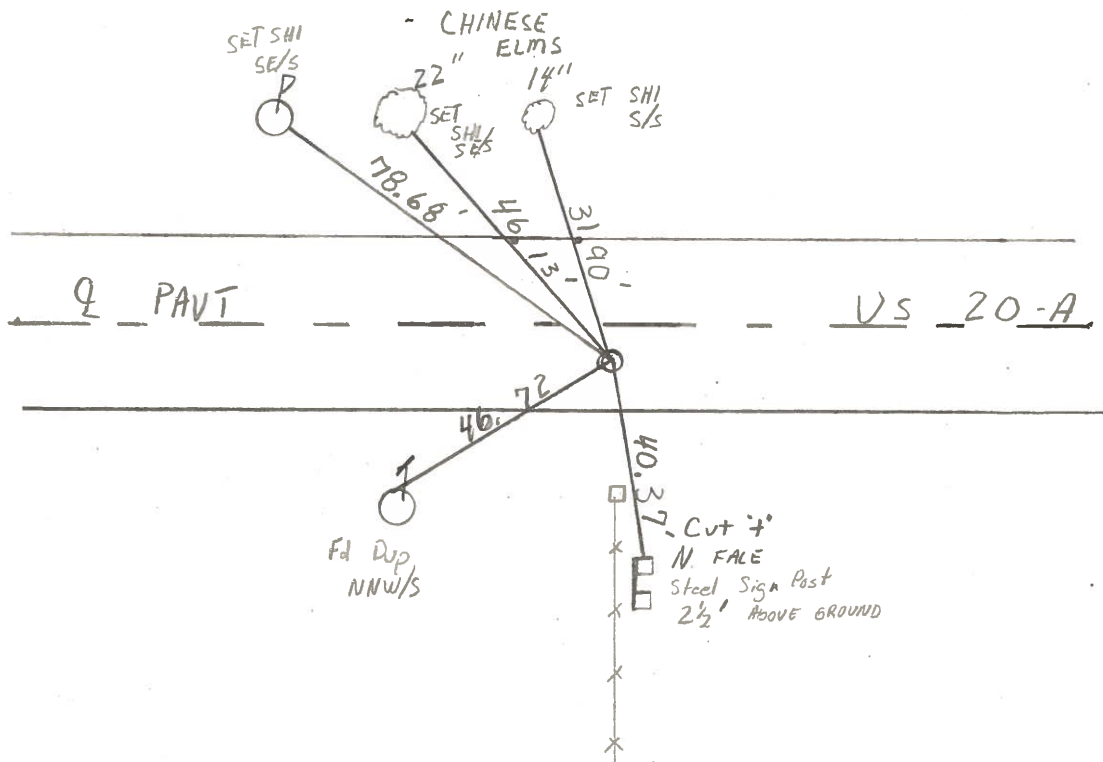
#3

CREW

Fd: 1" Pipe, 1 inch below surface  
 4.0 Rt of Q PAVT US 20-A  
 13.7' to NEP  
 5.5' to SEP

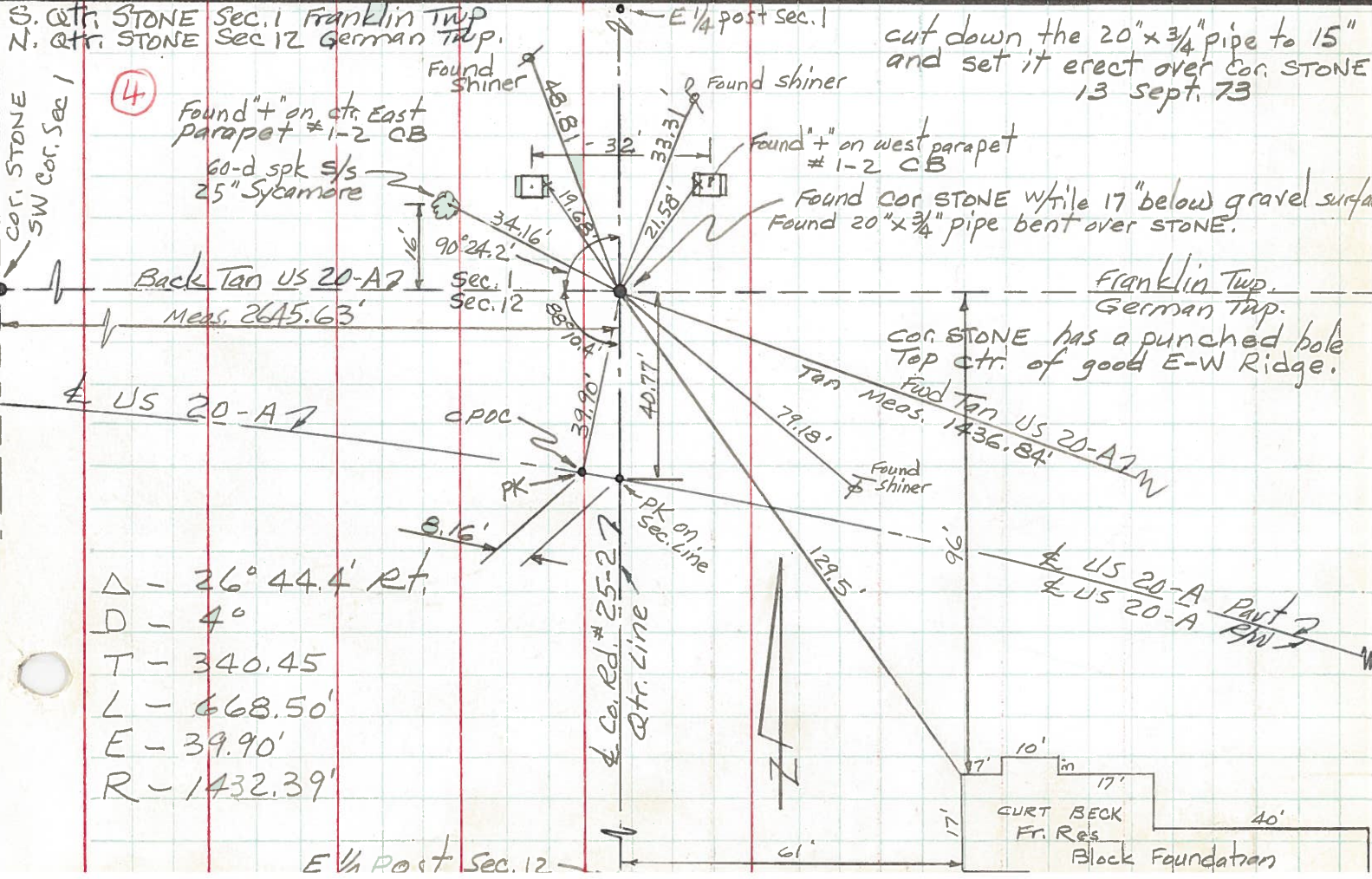
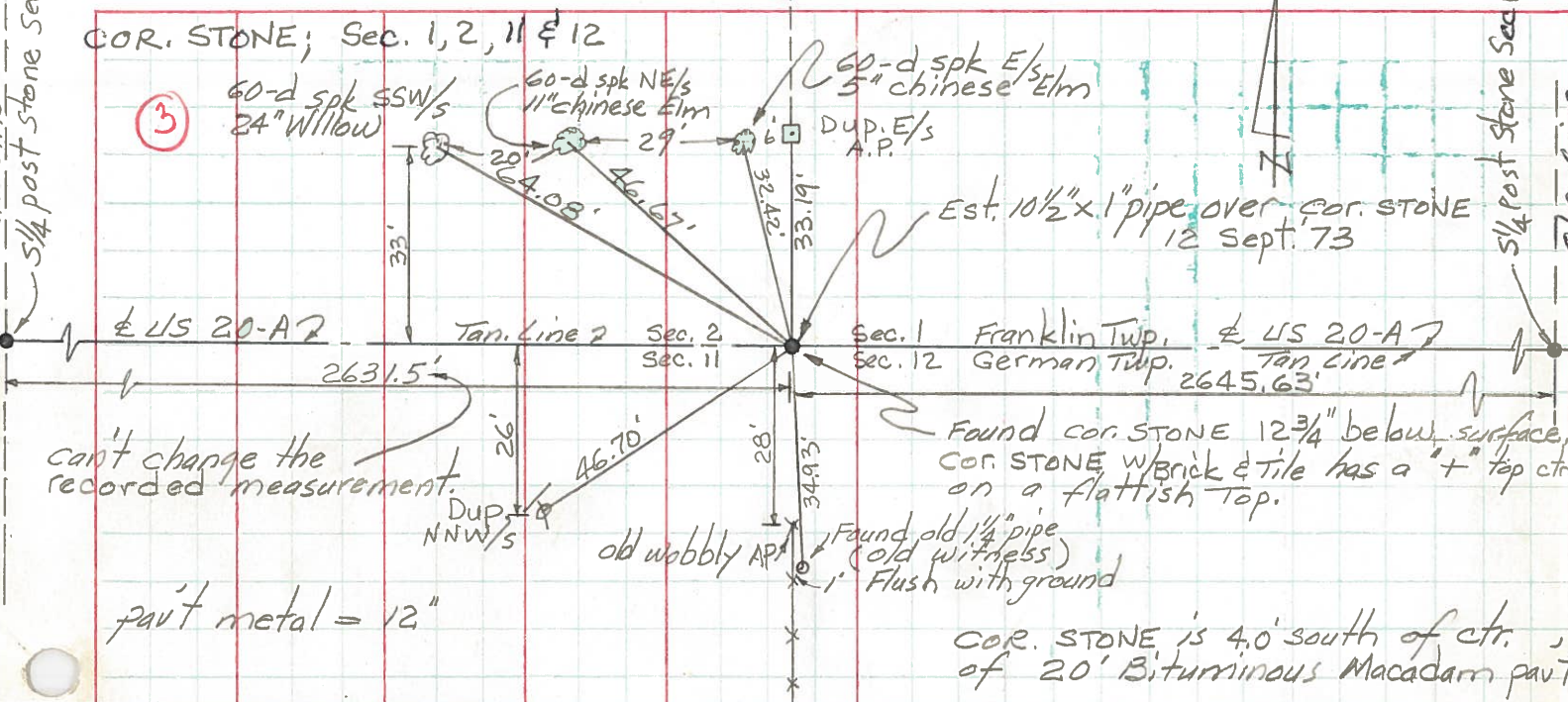
SLM 52+61

SET SMALL R.E. SPK.  
 8-9-83  
 S.W.H.



PERSONNEL TITLE PERSONNEL TITLE COUNTY Fulton DATE 12/13 Sept. '73  
Red Beach \_\_\_\_\_  
Newcomb \_\_\_\_\_  
Knape \_\_\_\_\_  
 S. R. US 20-A WEATHER \_\_\_\_\_  
 SEC. Franklin-German Twp. TEMP. \_\_\_\_\_

DESCRIPTION CONTROL POINTS JOB NO. \_\_\_\_\_



Δ - 26° 44.4' Rt.  
 D - 4°  
 T - 340.45  
 L - 668.50'  
 E - 39.90'  
 R - 1432.39'

PERSONNEL	TITLE	PERSONNEL	TITLE	COUNTY	DATE	WEATHER	TEMP.
Tomsic		Boyle		Fulton	Aug. 15, 1973		
Neuser				S. R. U.S. 20A			
Granata				SEC. German TWP.			
Vanyo							

DESCRIPTION \_\_\_\_\_ LEFT \_\_\_\_\_ CENTER LINE \_\_\_\_\_ RIGHT \_\_\_\_\_ JOB NO. \_\_\_\_\_

