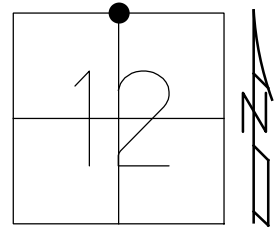


O.D.O.T. DISTRICT 2 SURVEY OFFICE (USE ONLY)

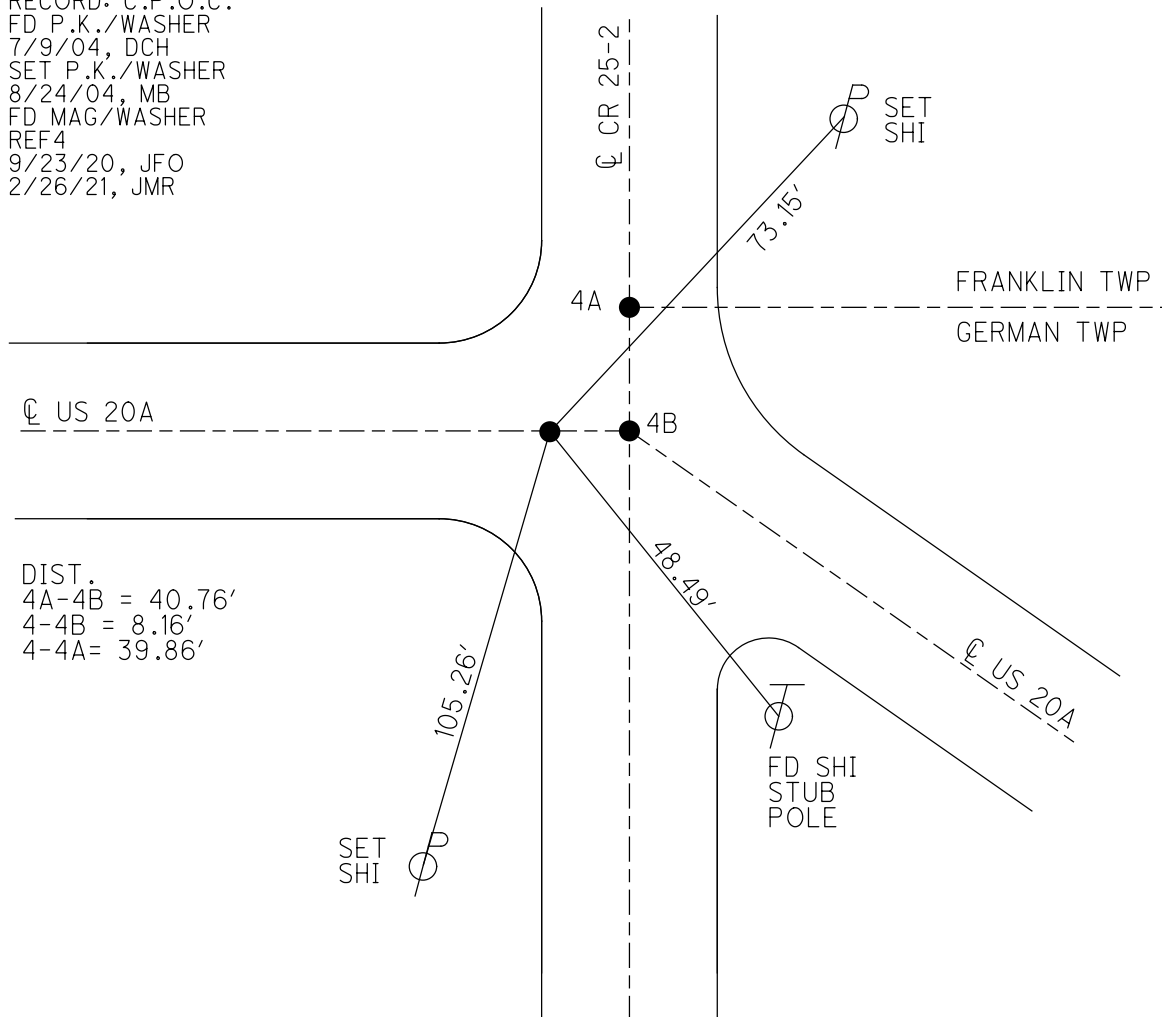
PERSONNEL _____ REFERENCE NO. 4 SHEET 4 OF 63
 NOTES NIESE DATE 2/26/21 ROUTE US 20A
 H.C. RHOADES WEATHER CLOUDY COUNTY FULTON
 R.C. _____ TEMP. 31° TOWNSHIP GERMAN
 DWG BY NIESE PID PAVETRAIN SECTION 12
 T 7 N R 4 E

TYPE MONUMENT MAG/WASHER
 ON SURFACE - ~~BELOW~~ ON
 OFFSET \perp PAVEMENT 1.1' ~~LT~~ : RT
- TO - EDGE PAVEMENT
 STATION: 79+06.84



HORZ. DATUM: NAD83 2011 GEOID: NAVD88 2012A
 GRID: NORTHING: 704911.960 EASTING: 1461849.258

RECORD: C.P.O.C.
 FD P.K./WASHER
 7/9/04, DCH
 SET P.K./WASHER
 8/24/04, MB
 FD MAG/WASHER
 REF4
 9/23/20, JFO
 2/26/21, JMR

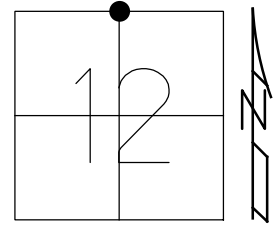


DIST.
 4A-4B = 40.76'
 4-4B = 8.16'
 4-4A = 39.86'

O.D.O.T. DISTRICT 2 SURVEY OFFICE (USE ONLY)

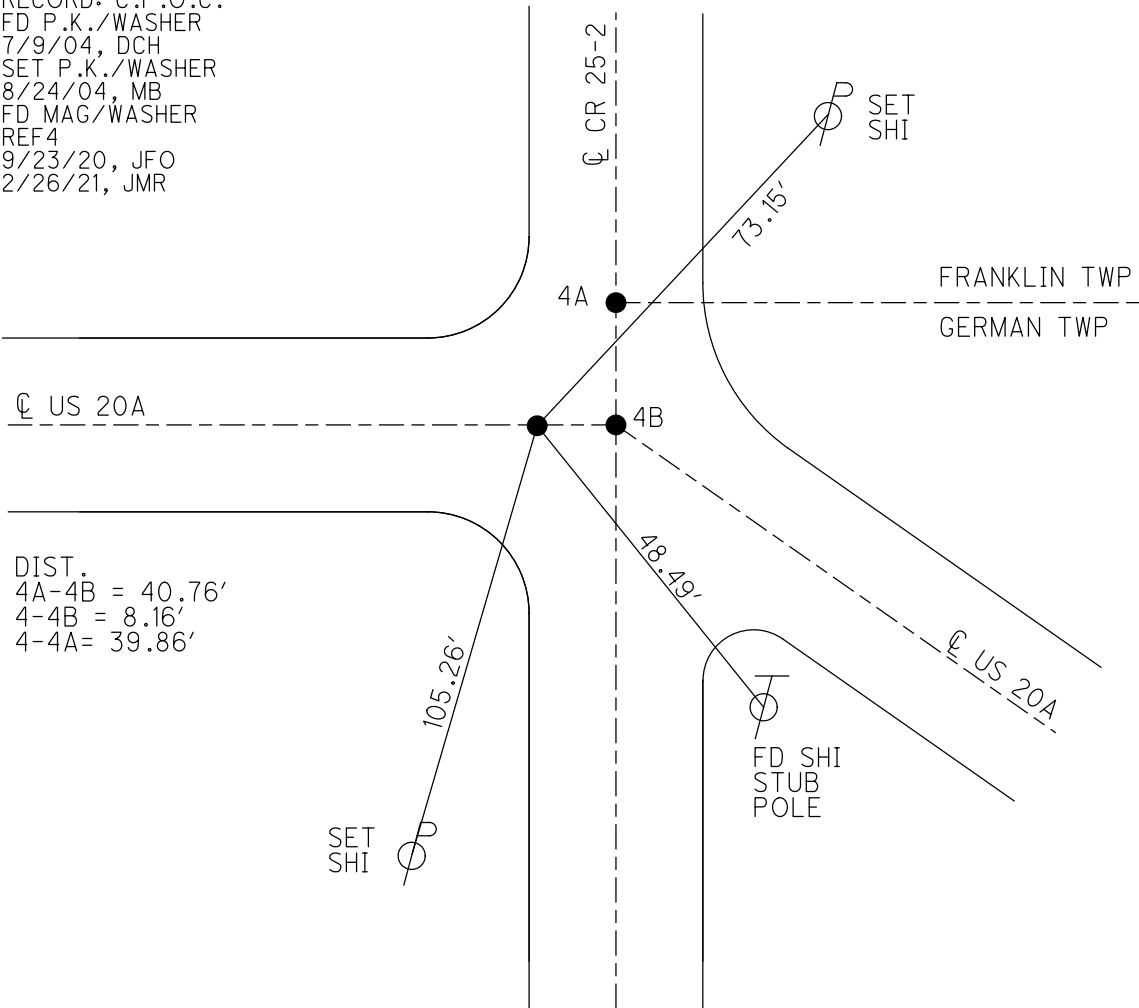
PERSONNEL _____ REFERENCE NO. 4 SHEET 4 OF 63
 NOTES NIESE DATE 2/26/21 ROUTE US 20A
 H.C. RHOADES WEATHER CLOUDY COUNTY FULTON
 R.C. _____ TEMP. 31° TOWNSHIP GERMAN
 DWG BY NIESE PID PAVETRAIN SECTION 12
 T 7 N R 4 E

TYPE MONUMENT MAG/WASHER
 ON SURFACE - ~~BELOW~~ ON
 OFFSET \varnothing PAVEMENT 1.1' ~~LT~~ : RT
- TO - EDGE PAVEMENT
 STATION: 79+06.84



HORZ. DATUM: NAD83 2011 GEOID: NAVD88 2012A
 GRID: NORTHING: 704911.960 EASTING: 1461849.258

RECORD: C.P.O.C.
 FD P.K./WASHER
 7/9/04, DCH
 SET P.K./WASHER
 8/24/04, MB
 FD MAG/WASHER
 REF4
 9/23/20, JFO
 2/26/21, JMR



DIST.
 4A-4B = 40.76'
 4-4B = 8.16'
 4-4A = 39.86'

O.D.O.T. DISTRICT 2 SURVEY OFFICE (USE ONLY)

PERSONNEL _____ REFERENCE NO. 4 SHEET 4 OF 63
 NOTES RHOADES DATE 9/23/20 ROUTE US 20A
 H.C. O'DONNELL WEATHER SUNNY COUNTY FULTON
 R.C. AUBLE TEMP. 62° TOWNSHIP GERMAN
 SECTION 12
 DWG BY RHOADES PID PAVETRAIN T 7 N R 4 E

TYPE MONUMENT MAG/WASHER

ON SURFACE - ~~BELOW~~ ON _____

OFFSET \bar{C} PAVEMENT 1.1' ~~±~~ : RT

- TO - EDGE PAVEMENT

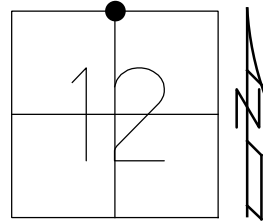
STATION: 79+06.84

HORZ.DATUM: NAD83 2011

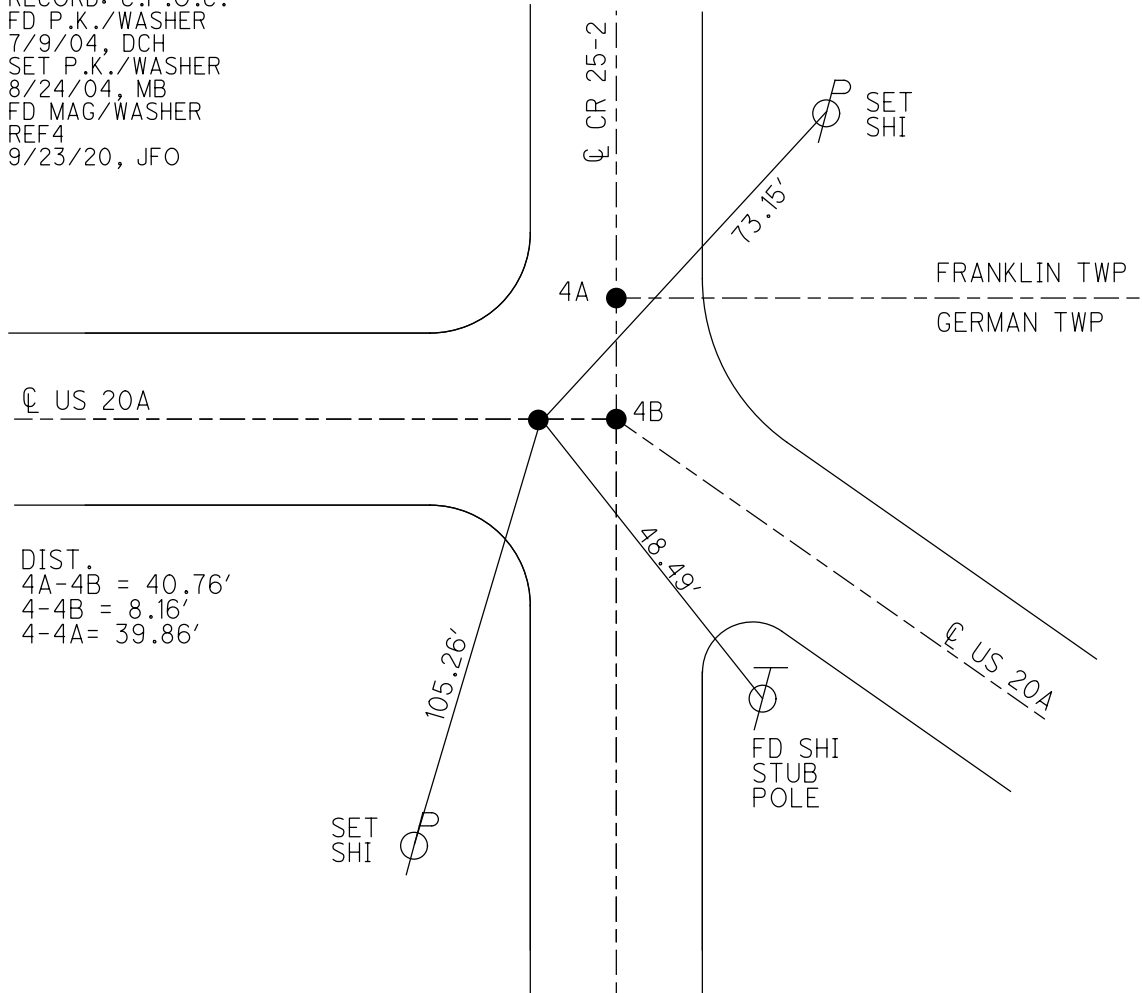
GEOID: NAVD88 2012A

GRID: NORTHING: 704911.960

EASTING: 1461849.258



RECORD: C.P.O.C.
 FD P.K./WASHER
 7/9/04, DCH
 SET P.K./WASHER
 8/24/04, MB
 FD MAG/WASHER
 REF4
 9/23/20, JFO

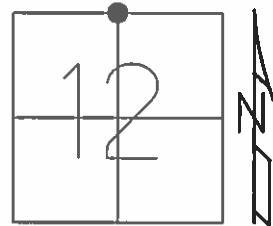


DIST.
 4A-4B = 40.76'
 4-4B = 8.16'
 4-4A = 39.86'

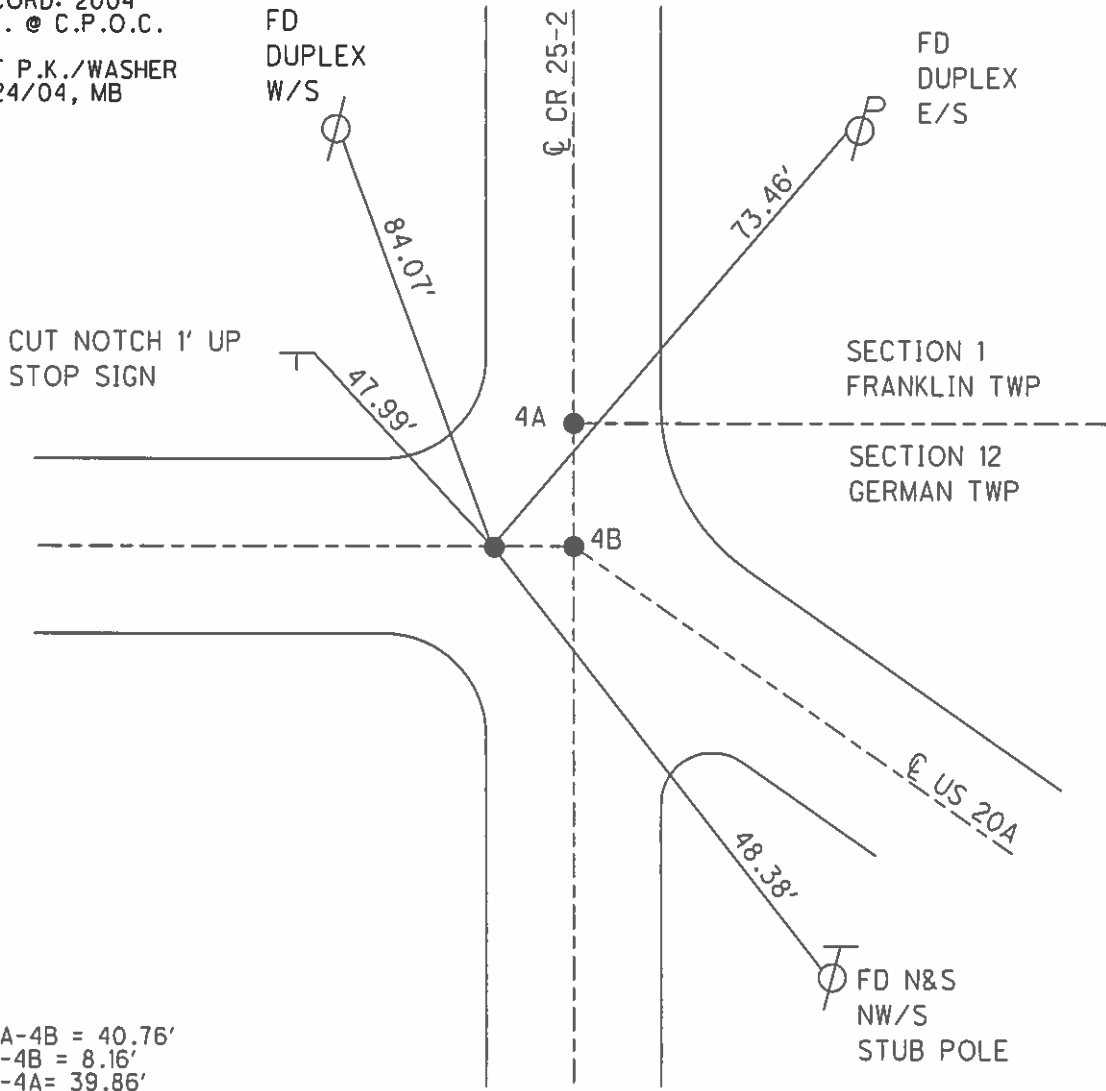
O.D.O.T. DISTRICT 2 SURVEY OFFICE (USE ONLY)

PERSONNEL _____ REFERENCE NO. 4 SHEET 5 OF 61
 NOTES HOMAN DATE 7/9/04 ROUTE US 20A
 H.C. HUSS WEATHER SUNNY COUNTY FULTON
 R.C. NUHFER TEMP. 75° TOWNSHIP GERMAN
 SECTION 12
 T 7 N R 4 E

TYPE MONUMENT P.K./WASHER
 ON SURFACE - ~~BELOW~~ ON _____
 LEFT-☉ PAV'T-RIGHT 1.1'
 - TO - EDGE PAVEMENT
 S.L.M. 79+06.84
 GRID: NORTHING: _____ EASTING: _____



RECORD: 2004
 P.K. @ C.P.O.C.
 SET P.K./WASHER
 8/24/04, MB



4A-4B = 40.76'
 4-4B = 8.16'
 4-4A = 39.86'

O.D.O.T. DISTRICT 2 SURVEY OFFICE

PERSONNEL _____

REFERENCE NO. 4

SHEET 4 OF 15

NOTES HOMAN

DATE 7-09-04

ROUTE S.R.-20A

H.C. HUSS

WEATHER SUNNY

COUNTY FULTON

R.C. NUHFER

TEMP. 75°

TOWNSHIP GERMAN

SECTION 12

B & C
P.K./WASHER

T 7 N R 4 E

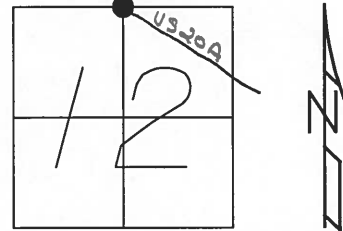
TYPE MONUMENT A = LG RR SPIKE

ON SURFACE ~~BELOW~~ ON _____

~~LEFT~~ PAV'T ~~RIGHT~~ B&C 1.1' RT


TO EDGE PAVEMENT

S.L.M. PT "B" = 79+15



RECORD:

- A = 3/4" PIPE ON SECTION CORNER
- B = P.K. ON N-S SECTION LINE
- C = P.K. AT C.P.O.C.

A=48.15' 
 B=87.13'
 C=84.07'

A=15.52'
 B=51.09'
 C=47.99'

CUT NOTCH 1' UP
 STOP SIGN

Q PAVEMENT

C.R. 25-2

FD
 DUPLEX
 E/S

A=36.22'
 B=71.97'
 C=73.46'

SECTION 1
 FRANKLIN TWP

SECTION 12
 GERMAN TWP

SET MAG NAIL
 & WASHER'S
 PT B & C
 8-24-04
 MB

U.S. 20-A

FD N&S
 NW/S
 STUB POLE

A=79.21'
 B=42.15'
 C=48.38'

PT "A" TO PT "B" = 40.76'
 PT "B" TO PT "C" = 8.16'
 PT "A" TO PT "C" = 39.86'

Q PAVEMENT

O.D.O.T. DISTRICT 2 SURVEY OFFICE

PERSONNEL _____

REFERENCE NO. 4

SHEET 4 OF _____

NOTES Loehrke

H.C. CANTERBURY

R.C. Hermiller

DATE 5-18-94

WEATHER Nice

TEMP. +56

ROUTE S.R. 20-A

COUNTY FULTON

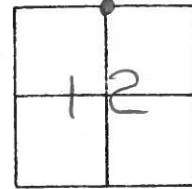
TOWNSHIP GERMAN

SECTION 12

T 7 N R 4 E

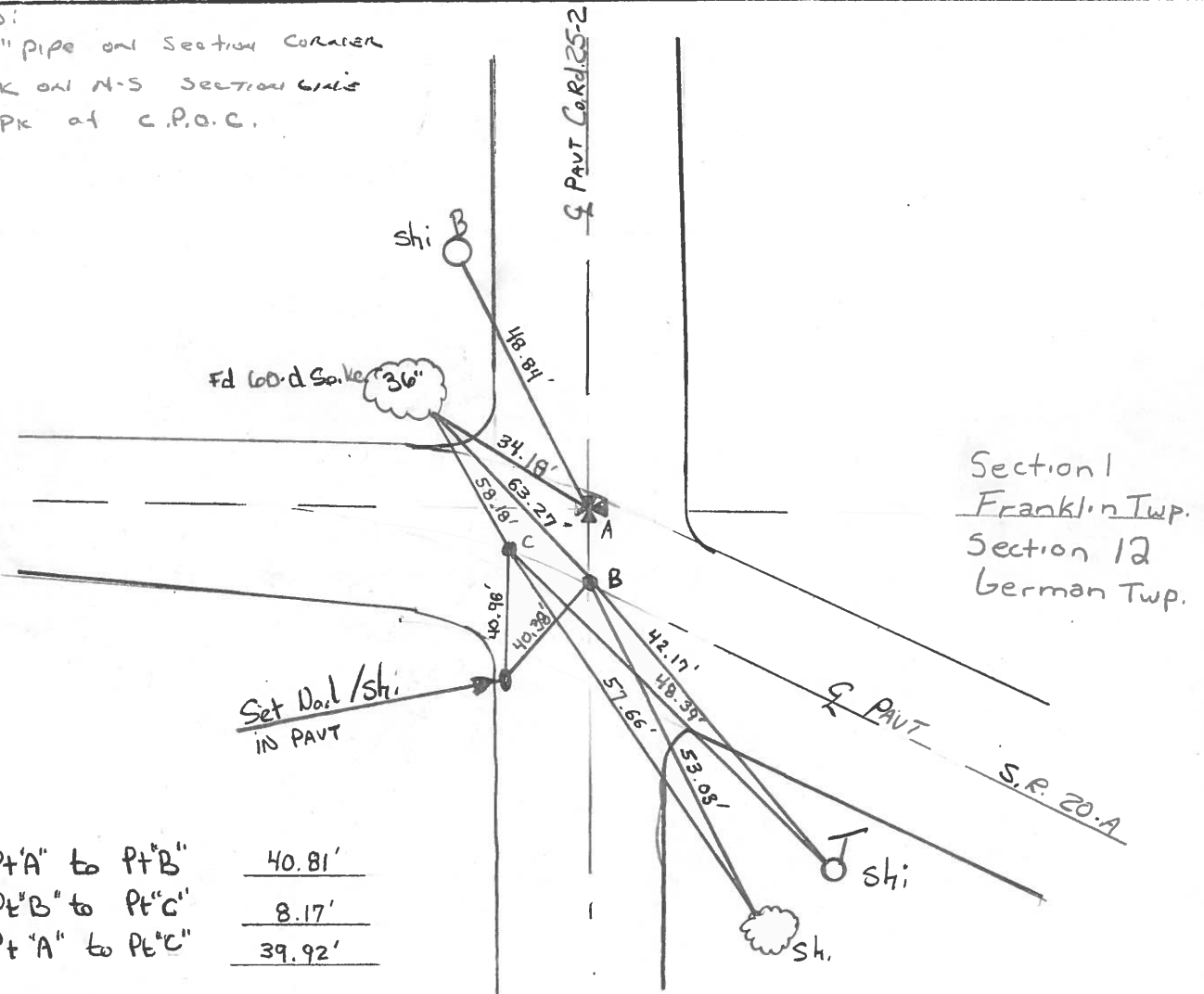
TYPE MONUMENT A = 3/4" IRON PIPE
 ON SURFACE - BELOW A = 2" Below
 LEFT - Q PAV'T. - RIGHT PT "B" + "C" - 1.1' Right
 TO EDGE PAVEMENT
 S.L.M. PT "B" = 79+15

Reset
 B & C ⇒ P.K. N MILE
 7-8-94



Records:

- A = 3/4" pipe on Section Corner
- B = PK on N-S SECTION LINE
- C = PK at C.P.O.C.



Pt 'A' to Pt 'B'	<u>40.81'</u>
Pt 'B' to Pt 'C'	<u>8.17'</u>
Pt 'A' to Pt 'C'	<u>39.92'</u>

County FULTON S.R. US 20-A

Date JAN 26 - 1983

Township GERMAN

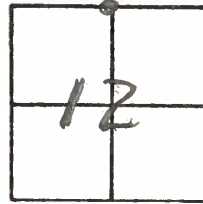
Weather OVER CAST

Section 12

Temp. + 30°

T7N, R4E

Personnel HOFFMAN



#4

§
CREW

Pt A: Fd 3/4" Pipe 2" below surface on Sect Corner

Pt B: Fd PK at SURFACE 0.9' Rt of PAVT US 20-A and on N-S Sect LINE

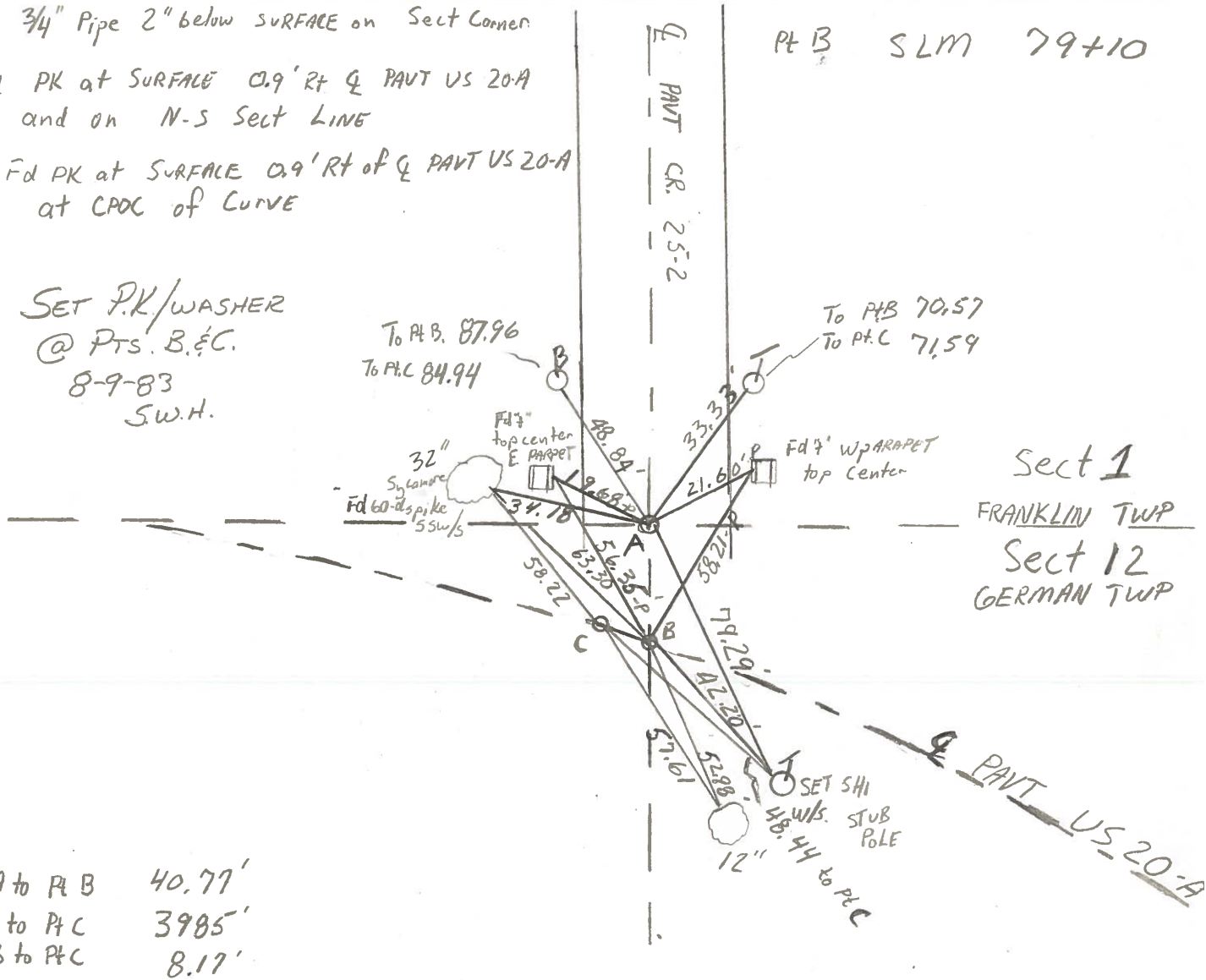
Pt C: Fd PK at SURFACE 0.9' Rt of PAVT US 20-A at CPOC of Curve

Pt B SLM 79+10

SET P.K./WASHER
@ PTS. B. & C.
8-9-83
S.W.H.

To Pt B. 87.96
To Pt C. 84.94

To Pt B 70.57
To Pt C 71.59



Pt A to Pt B 40.77'
Pt A to Pt C 39.85'
Pt B to Pt C 8.17'

PERSONNEL TITLE PERSONNEL TITLE

Red Beach
Newcomb
Knappe

SHEET NO.

COUNTY Fulton

DATE 12/13 Sept. '73

S. R. US 20-A

WEATHER

SEC. Franklin-German Twp. TEMP.

DESCRIPTION CONTROL POINTS

