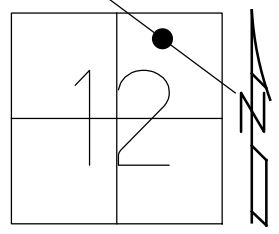


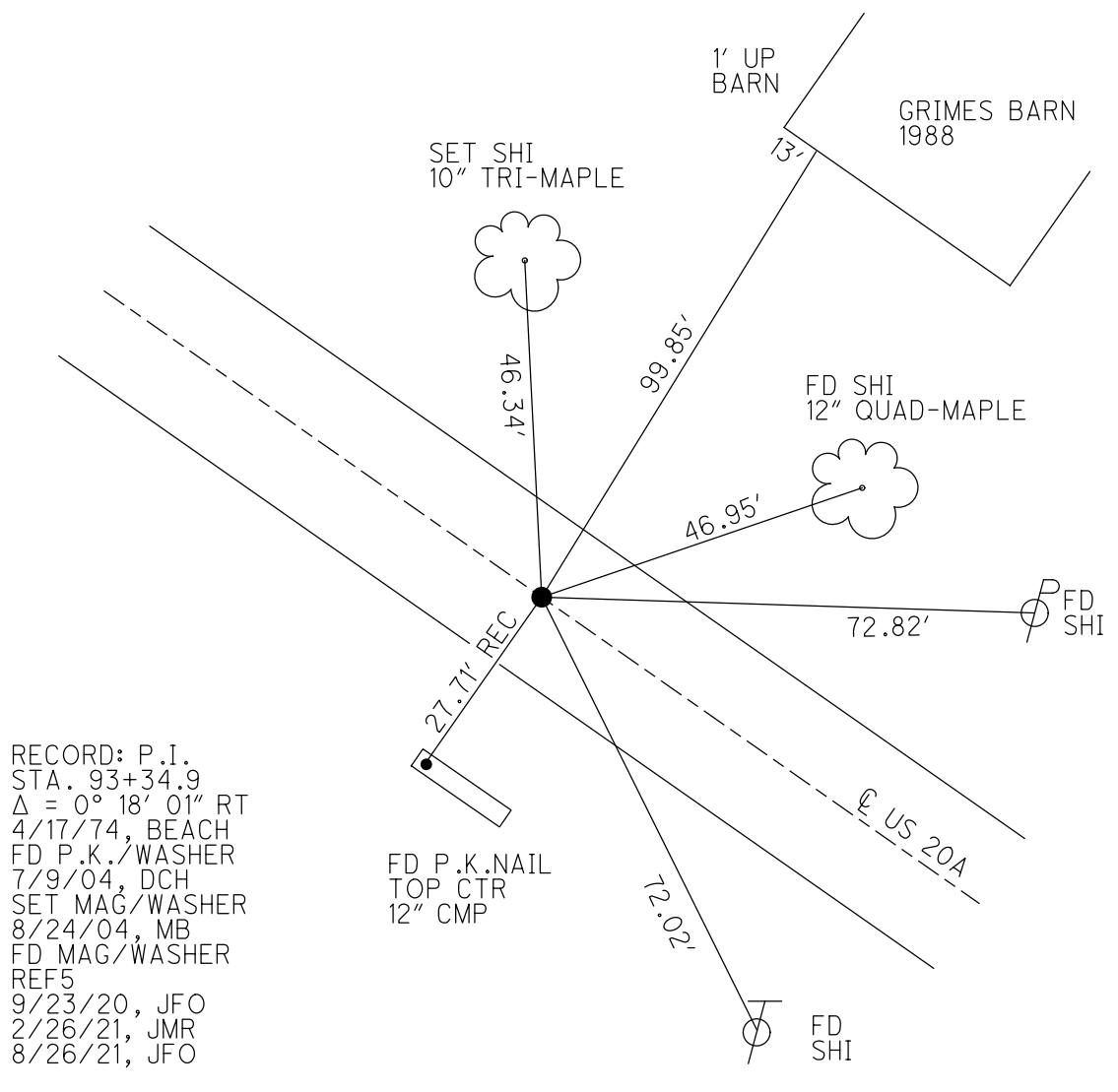
O.D.O.T. DISTRICT 2 SURVEY OFFICE (USE ONLY)

PERSONNEL \_\_\_\_\_ REFERENCE NO. 5 SHEET 7 OF 63  
 NOTES NIESE DATE 2/26/21 ROUTE US 20A  
 H.C. RHOADES WEATHER CLOUDY COUNTY FULTON  
 R.C. \_\_\_\_\_ TEMP. 31° TOWNSHIP GERMAN  
 DWG BY NIESE PID PAVETRAIN SECTION 12  
 T 7 N R 4 E

TYPE MONUMENT MAG/WASHER  
 ON SURFACE - ~~BELOW~~ ON  
 OFFSET  $\text{C}$  PAVEMENT ON LT : RT  
9.3' TO LT EDGE PAVEMENT  
 STATION: 92+32



HORZ. DATUM: NAD83 2011 GEOID: NAVD88 2012A  
 GRID: NORTHING: 704323.066 EASTING: 1463150.062

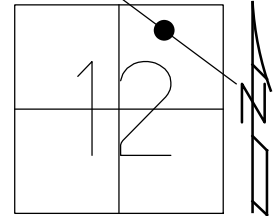


RECORD: P.I.  
 STA. 93+34.9  
 $\Delta = 0^\circ 18' 01''$  RT  
 4/17/74, BEACH  
 FD P.K./WASHER  
 7/9/04, DCH  
 SET MAG/WASHER  
 8/24/04, MB  
 FD MAG/WASHER  
 REF5  
 9/23/20, JFO  
 2/26/21, JMR  
 8/26/21, JFO

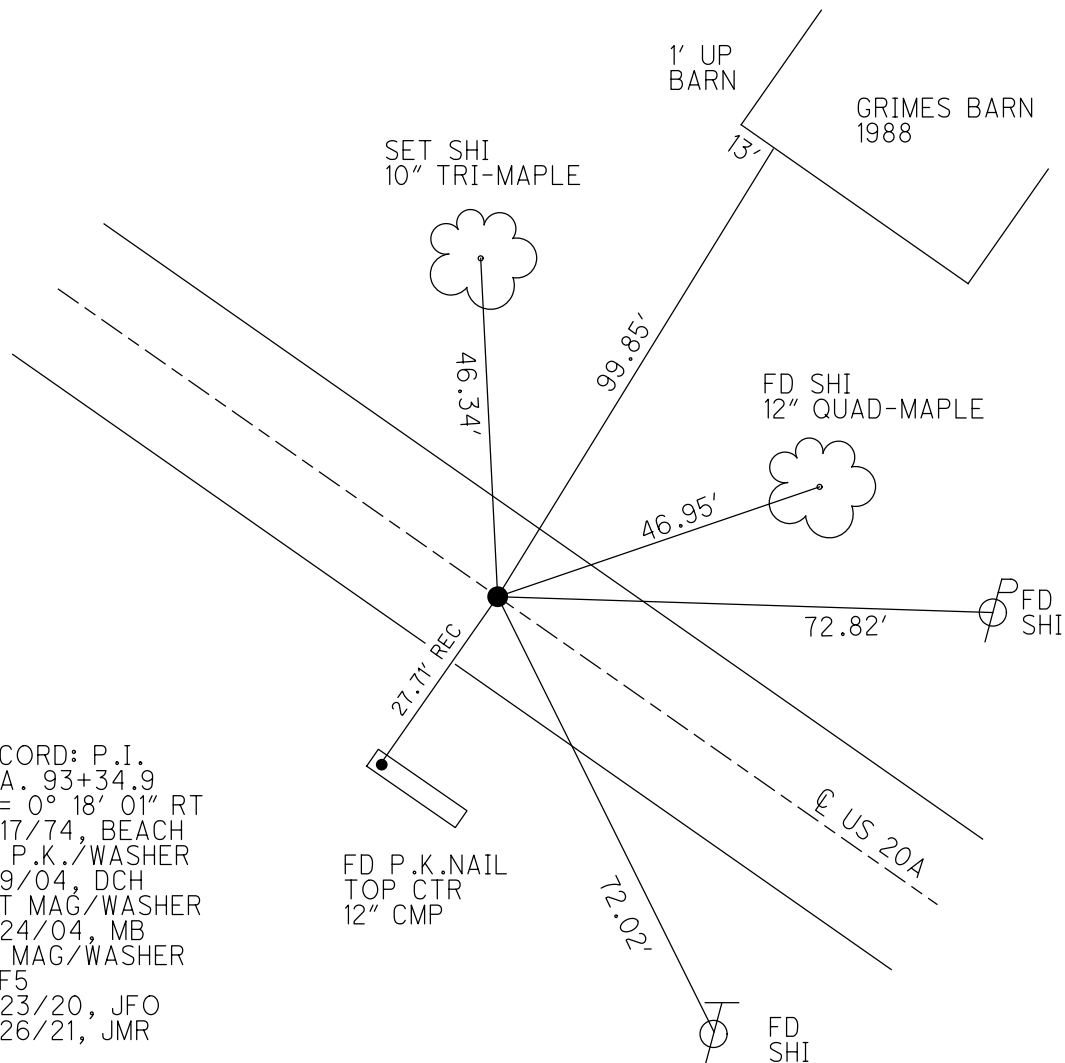
O.D.O.T. DISTRICT 2 SURVEY OFFICE (USE ONLY)

PERSONNEL \_\_\_\_\_ REFERENCE NO. 5 SHEET 7 OF 63  
 NOTES NIESE DATE 2/26/21 ROUTE US 20A  
 H.C. RHOADES WEATHER CLOUDY COUNTY FULTON  
 R.C. \_\_\_\_\_ TEMP. 31° TOWNSHIP GERMAN  
 DWG BY NIESE PID PAVETRAIN SECTION 12  
 T 7 N R 4 E

TYPE MONUMENT MAG/WASHER  
 ON SURFACE - ~~BELOW~~ ON  
 OFFSET ☉ PAVEMENT ON LT : RT  
9.3' TO LT EDGE PAVEMENT  
 STATION: 92+32



HORZ. DATUM: NAD83 2011 GEOID: NAVD88 2012A  
 GRID: NORTHING: 704323.066 EASTING: 1463150.062



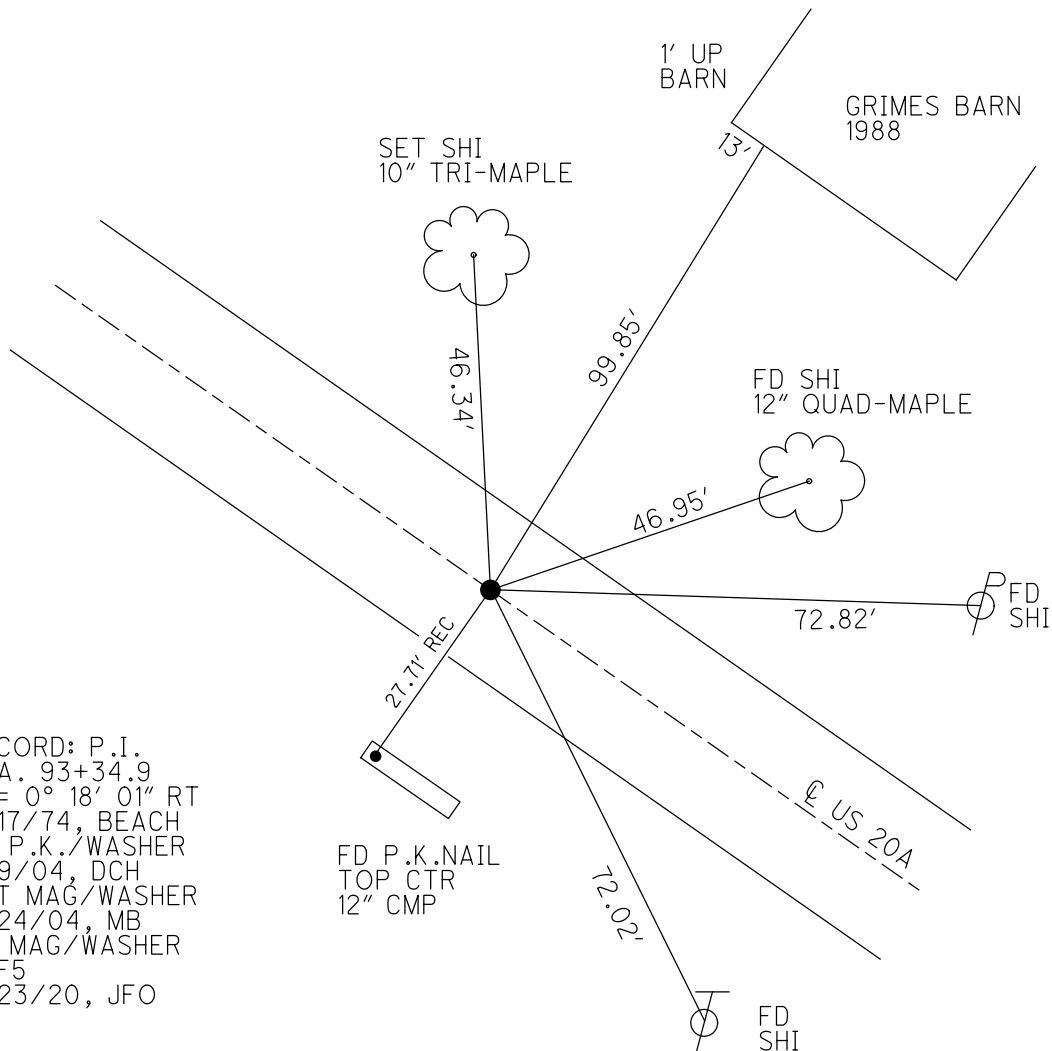
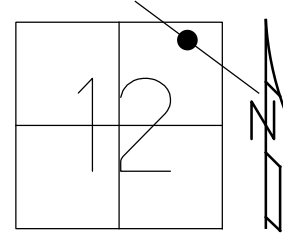
RECORD: P.I.  
 STA. 93+34.9  
 $\Delta = 0^\circ 18' 01''$  RT  
 4/17/74, BEACH  
 FD P.K./WASHER  
 7/9/04, DCH  
 SET MAG/WASHER  
 8/24/04, MB  
 FD MAG/WASHER  
 REF5  
 9/23/20, JFO  
 2/26/21, JMR

O.D.O.T. DISTRICT 2 SURVEY OFFICE (USE ONLY)

PERSONNEL \_\_\_\_\_ REFERENCE NO. 5 SHEET 7 OF 63  
 NOTES RHOADES DATE 9/23/20 ROUTE US 20A  
 H.C. O'DONNELL WEATHER SUNNY COUNTY FULTON  
 R.C. AUBLE TEMP. 62° TOWNSHIP GERMAN  
 DWG BY RHOADES PID PAVETRAIN SECTION 12  
 T 7 N R 4 E

TYPE MONUMENT MAG/WASHER  
 ON SURFACE - ~~BELOW~~ ON \_\_\_\_\_  
 OFFSET  $\odot$  PAVEMENT ON \_\_\_\_\_ LT : RT  
9.3' TO LT EDGE PAVEMENT  
 STATION: 92+32

HORZ.DATUM: NAD83 2011 GEOID: NAVD88 2012A  
 GRID: NORTHING: 704323.066 EASTING: 1463150.062

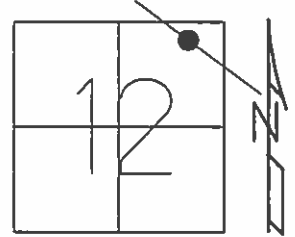


RECORD: P.I.  
 STA. 93+34.9  
 $\Delta = 0^\circ 18' 01''$  RT  
 4/17/74, BEACH  
 FD P.K./WASHER  
 7/9/04, DCH  
 SET MAG/WASHER  
 8/24/04, MB  
 FD MAG/WASHER  
 REF5  
 9/23/20, JFO

O.D.O.T. DISTRICT 2 SURVEY OFFICE (USE ONLY)

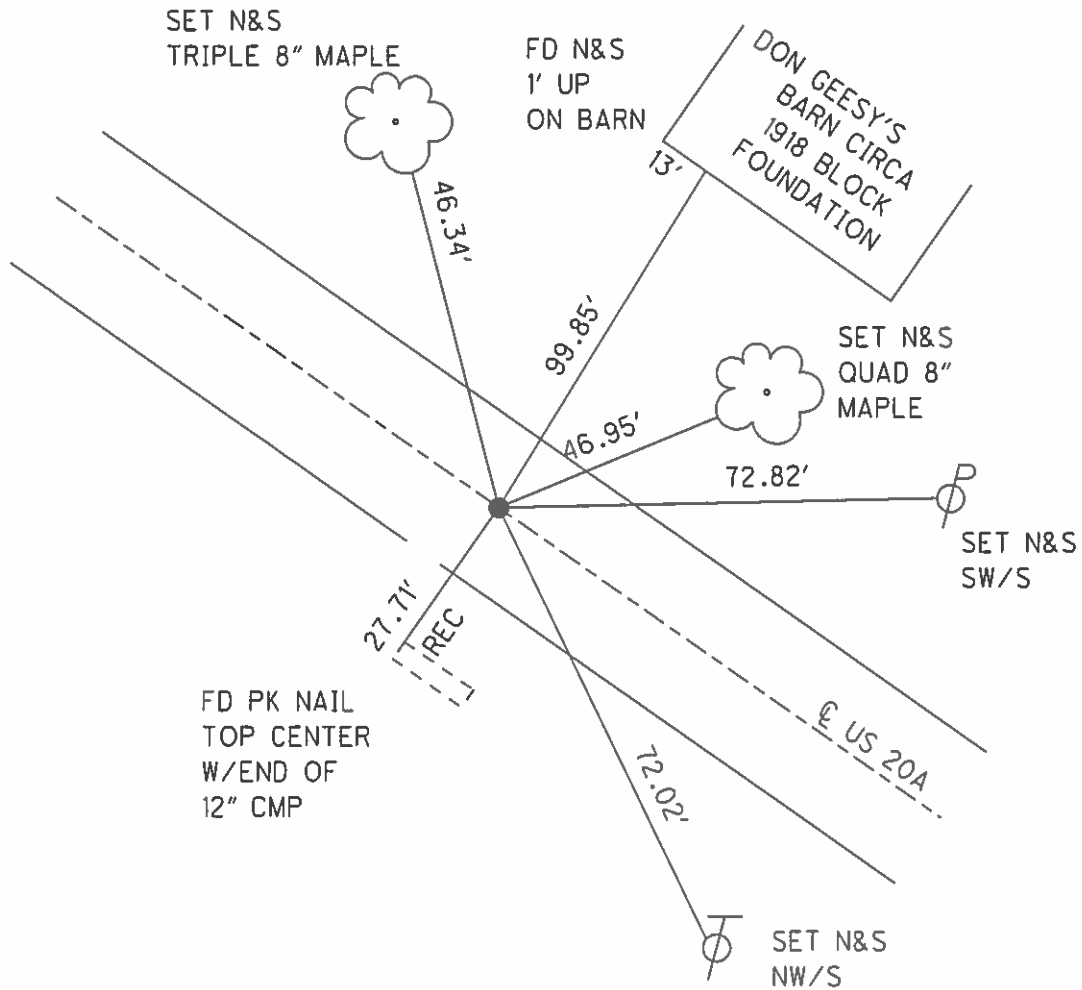
PERSONNEL \_\_\_\_\_ REFERENCE NO. 5 SHEET 7 OF 61  
 NOTES HOMAN DATE 7/9/04 ROUTE US 20A  
 H.C. HUSS WEATHER SUNNY COUNTY FULTON  
 R.C. NUHFER TEMP. 75° TOWNSHIP GERMAN  
 \_\_\_\_\_ SECTION 12  
 \_\_\_\_\_ T 7 N R 4 E

TYPE MONUMENT P.K./WASHER  
 ON SURFACE - ~~BELOW~~ ON \_\_\_\_\_  
 LEFT-☉ PAV'T-~~RIGHT~~ 1.0'  
9.3' TOLT EDGE PAVEMENT  
 S.L.M. 92+32  
 GRID: NORTHING: \_\_\_\_\_ EASTING: \_\_\_\_\_



RECORD:1934 PLAN P.I. STA 93+34.9  
 DELTA = 0°-19' RT. (MEAS. 0° 18.1' RT. 17 APRIL 1974)  
 BY BEACH

SET MAG/WASHER  
 8-24-04, MB



# O.D.O.T. DISTRICT 2 SURVEY OFFICE

PERSONNEL \_\_\_\_\_

REFERENCE NO. 5 SHEET 5 OF \_\_\_\_\_

NOTES LOEHRKE

H.C. CANTERBURY

R.C. HERMILLER

DATE 5-18-94

WEATHER NICE

TEMP. +55

ROUTE S.R. U.S 20-A

COUNTY Fulton

TOWNSHIP German

SECTION 12

T 7 N R 4 E

TYPE MONUMENT SM. RR SPIKE

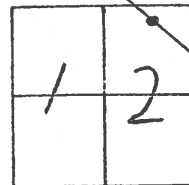
ON SURFACE BELOW

LEFT-☉ PAV'T. RIGHT 1.2' LEFT of ☉

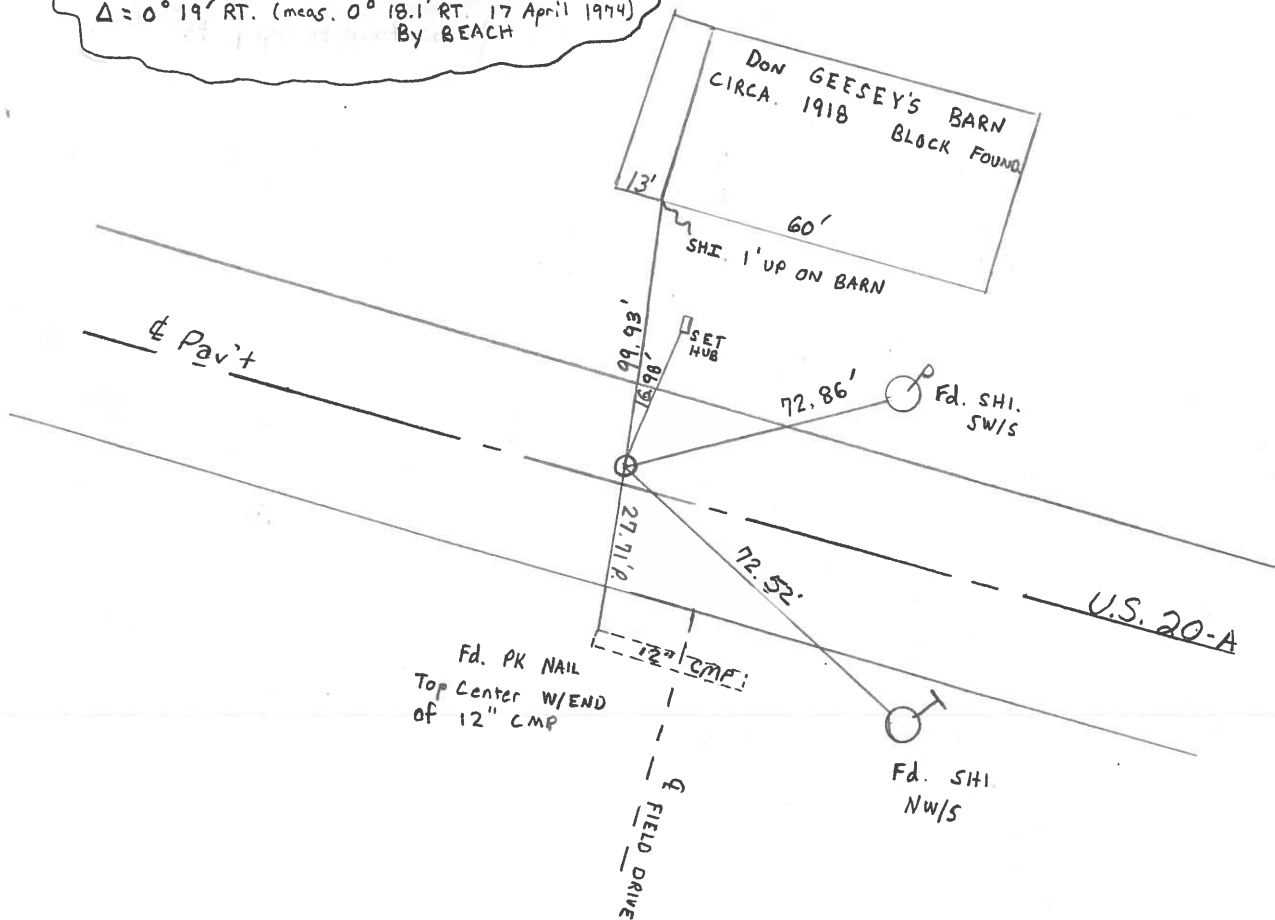
9.3' TO Lt. EDGE PAVEMENT

S.L.M. STA 93+32

Set P.K. / WASHER  
7-29-94  
C.L.



Record: 1934 PLAN P.I. STA 93+34.9  
 $\Delta = 0^\circ 19' RT.$  (meas.  $0^\circ 18.1' RT.$  17 April 1974)  
 By BEACH





PERSONNEL TITLE PERSONNEL TITLE

Red Beach  
Newcomb  
Knape

COUNTY Fulton

DATE Sept. 73

S. R. US 20-A

WEATHER \_\_\_\_\_

SEC. German Twp.

TEMP. \_\_\_\_\_

DESCRIPTION

### CONTROL POINTS

JOB NO. \_\_\_\_\_

LEFT

CENTER LINE

RIGHT

5

Sept. '73  
Red Beach  
Newcomb  
Knape

Don Geesey's Barn  
circa 1918  
Block Foundn  
60

Found beatup 9"x1" pipe on pavt. surface. Found a 16"x1" pipe 14 3/4" below pavt. surface and beneath the 9" pipe. Found roofing nail 2' N&W offsets on pavt. surface. Removed the 9" pipe and est. a 13"x3/4" pipe over the 16" pipe.

± US 20-A  
Meas. 1436.84'

± US 20-A  
Meas. 1695.00'  
Recorded 1695.15'

1934 Plan PI sta. 93+34.9  
Δ = 0° 19' Rt., (Meas. 0° 18.1' Rt., 17 Apr. 74)  
PI is 0.6' north of ctr. of 20' Bit. Mac. pavt.

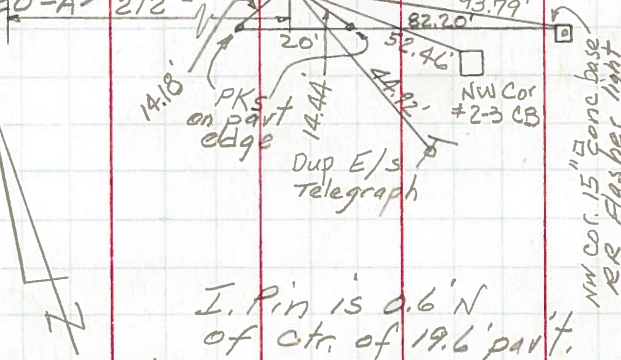
Found  
Shiner  
PK's top ctr. both ends,  
20' x 12" CMP dr. pipe

6

PI Sta. 110+30.05 (1934 surv.)  
Found recorded I. Pin,  
17 Apr. 74

The Iron Pin has a 2 1/2" dia. rounded head. The I. Pin is 43" below existing pavt. surface. The pre-1934 pavt surface is 4' below the existing surface. Est. 22"x1" pipe over the I. Pin 17 Apr. 74

Meas 1695.00' Meas 1989.75'



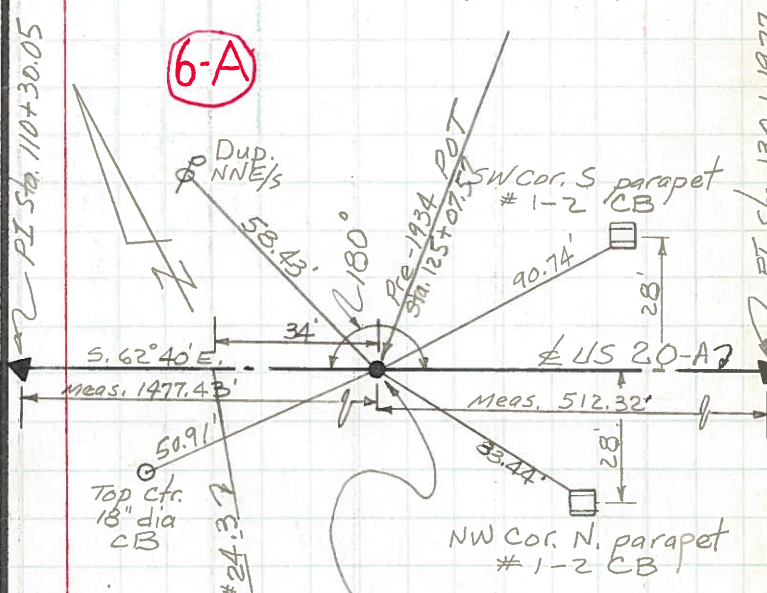
I. Pin is 0.6' N of ctr. of 19.6' pavt.

17 Apr. 74  
Red Beach  
Knape

± N&W RR sta. 111+88.75

POT Sta. 125+07.57 (pre 1934)

6-A



7" Blacktop  
10" N.B. Macadam  
17" total pavt. metal

Found recorded POT 30"x3/4" I Rod 18" below pavt surf. I. Rod is 0.1' N of ctr. of 20' Bit. Mac. pavt.

Est. 15"x3/4" pipe over the I. Rod  
16 Apr. 74  
Red Beach  
Knape