

O.D.O.T. DISTRICT 2 SURVEY OFFICE (USE ONLY)

PERSONNEL

REFERENCE NO. 5 A

SHEET 8 OF 63

NOTES NIESE

DATE 2/26/21

ROUTE US 20A

H.C. RHOADES

WEATHER CLOUDY

COUNTY FULTON

R.C. _____

TEMP. 31°

TOWNSHIP GERMAN

DWG BY NIESE PID PAVETRAIN

SECTION 7

T 7 N R 5 E

TYPE MONUMENT MAG/WASHER

ON SURFACE - ~~BELOW~~ ON

OFFSET Q PAVEMENT ON LT : RT

9.9' TO RT EDGE PAVEMENT

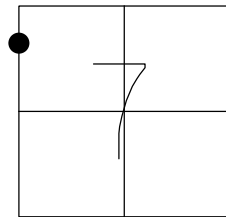
STATION: 108+20

HORZ.DATUM: NAD83 2011

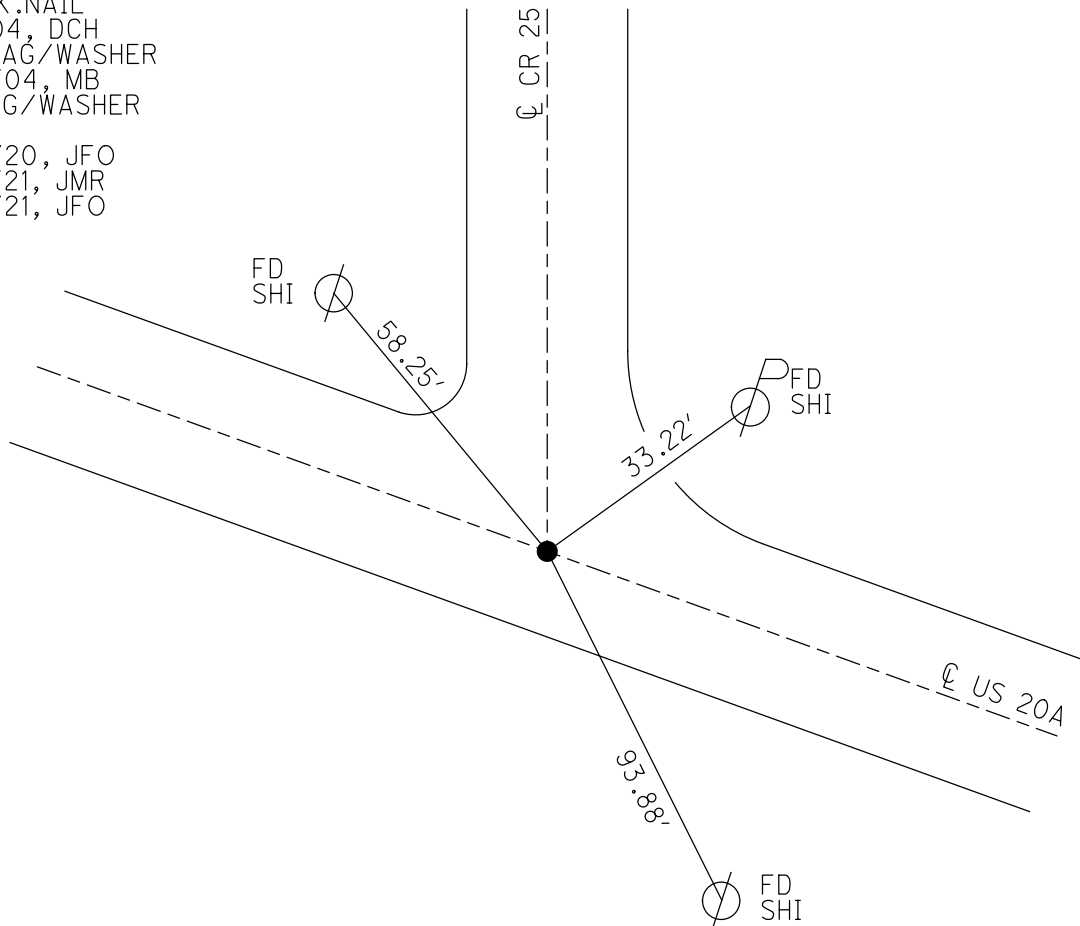
GEOID: NAVD88 2012A

GRID: NORTHING: 703668.131

EASTING: 1464480.011



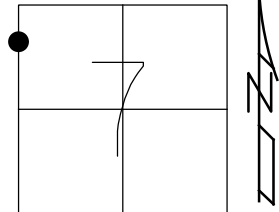
RECORD:
 FD P.K.NAIL
 7/9/04, DCH
 SET MAG/WASHER
 8/24/04, MB
 FD MAG/WASHER
 REFA5
 9/23/20, JFO
 2/26/21, JMR
 8/26/21, JFO



O.D.O.T. DISTRICT 2 SURVEY OFFICE (USE ONLY)

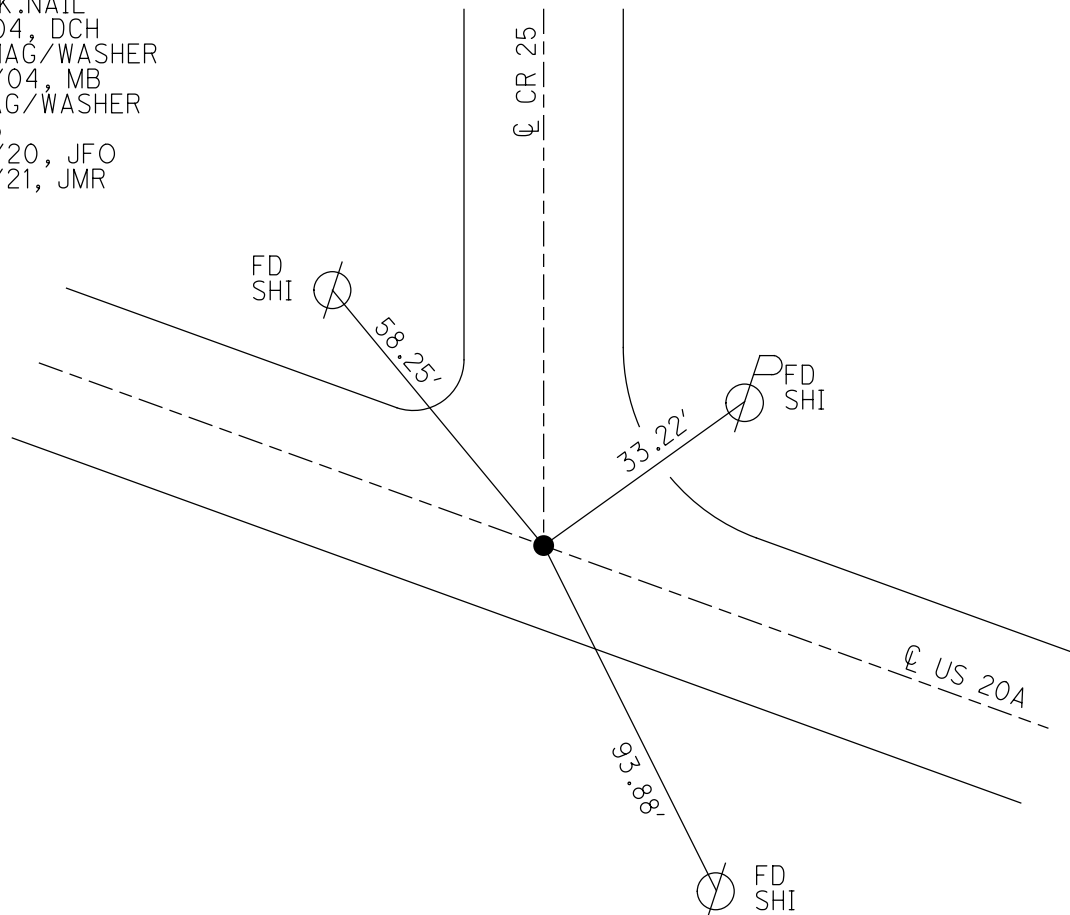
PERSONNEL _____ REFERENCE NO. 5 A SHEET 8 OF 63
 NOTES NIESE DATE 2/26/21 ROUTE US 20A
 H.C. RHOADES WEATHER CLOUDY COUNTY FULTON
 R.C. _____ TEMP. 31° TOWNSHIP GERMAN
 DWG BY NIESE PID PAVETRAIN SECTION 7
 T 7 N R 5 E

TYPE MONUMENT MAG/WASHER
 ON SURFACE - ~~BELOW~~ ON
 OFFSET Q PAVEMENT ON LT : RT
9.9' TO RT EDGE PAVEMENT
 STATION: 108+20



HORIZ.DATUM: NAD83 2011 GEOID: NAVD88 2012A
 GRID: NORTHING: 703668.131 EASTING: 1464480.011

RECORD:
 FD P.K.NAIL
 7/9/04, DCH
 SET MAG/WASHER
 8/24/04, MB
 FD MAG/WASHER
 REFA5
 9/23/20, JFO
 2/26/21, JMR



O.D.O.T. DISTRICT 2 SURVEY OFFICE (USE ONLY)

PERSONNEL

REFERENCE NO. 5 A

SHEET 8 OF 63

NOTES RHOADES

DATE 9/23/20

ROUTE US 20A

H.C. O'DONNELL

WEATHER SUNNY

COUNTY FULTON

R.C. AUBLE

TEMP. 70°

TOWNSHIP GERMAN

SECTION 7

DWG BY RHOADES

PID PAVETRAIN

T 7 N R 5 E

TYPE MONUMENT MAG/WASHER

ON SURFACE - ~~BELOW~~ ON

OFFSET Q PAVEMENT ON LT : RT

9.9' TO RT EDGE PAVEMENT

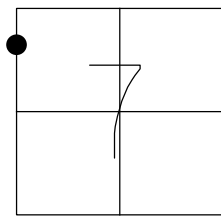
STATION: 108+20

HORIZ.DATUM: NAD83 2011

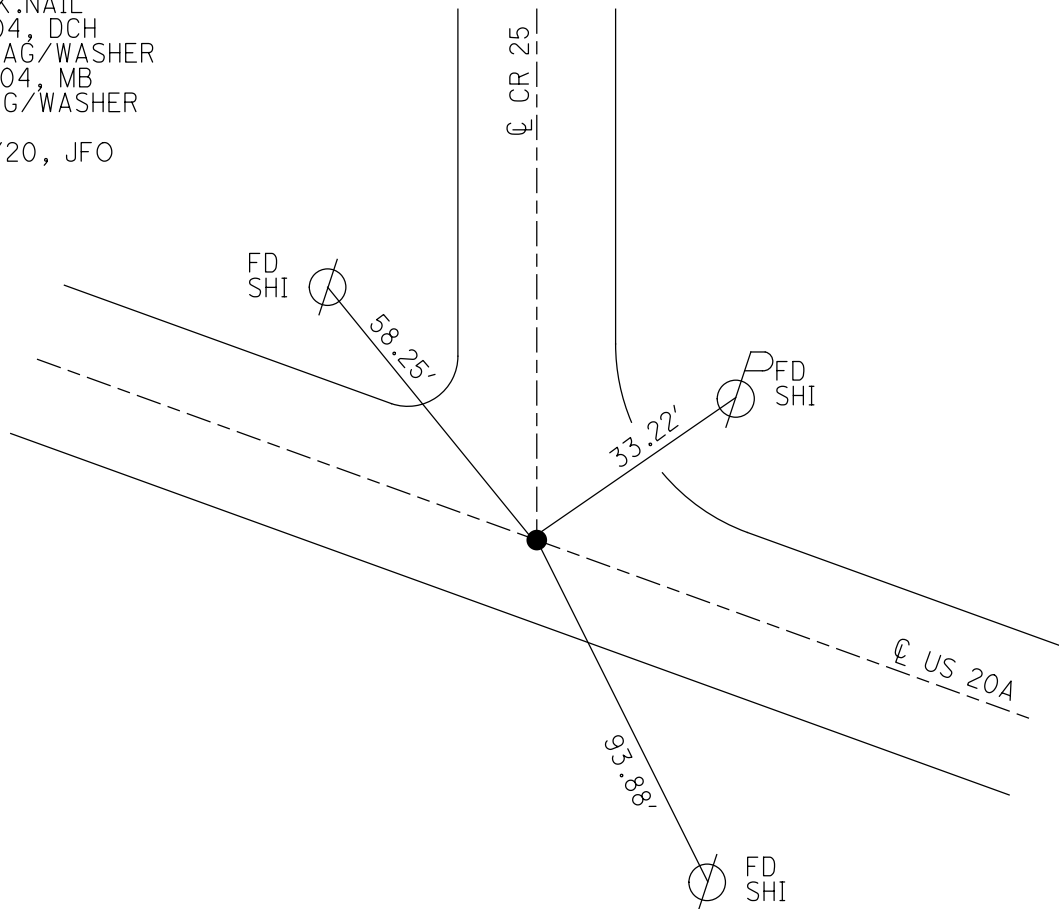
GEOID: NAVD88 2012A

GRID: NORTHING: 703668.131

EASTING: 1464480.011



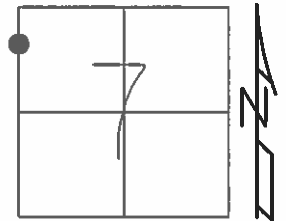
RECORD:
FD P.K.NAIL
7/9/04, DCH
SET MAG/WASHER
8-24-04, MB
FD MAG/WASHER
REFA5
9/23/20, JFO



O.D.O.T. DISTRICT 2 SURVEY OFFICE (USE ONLY)

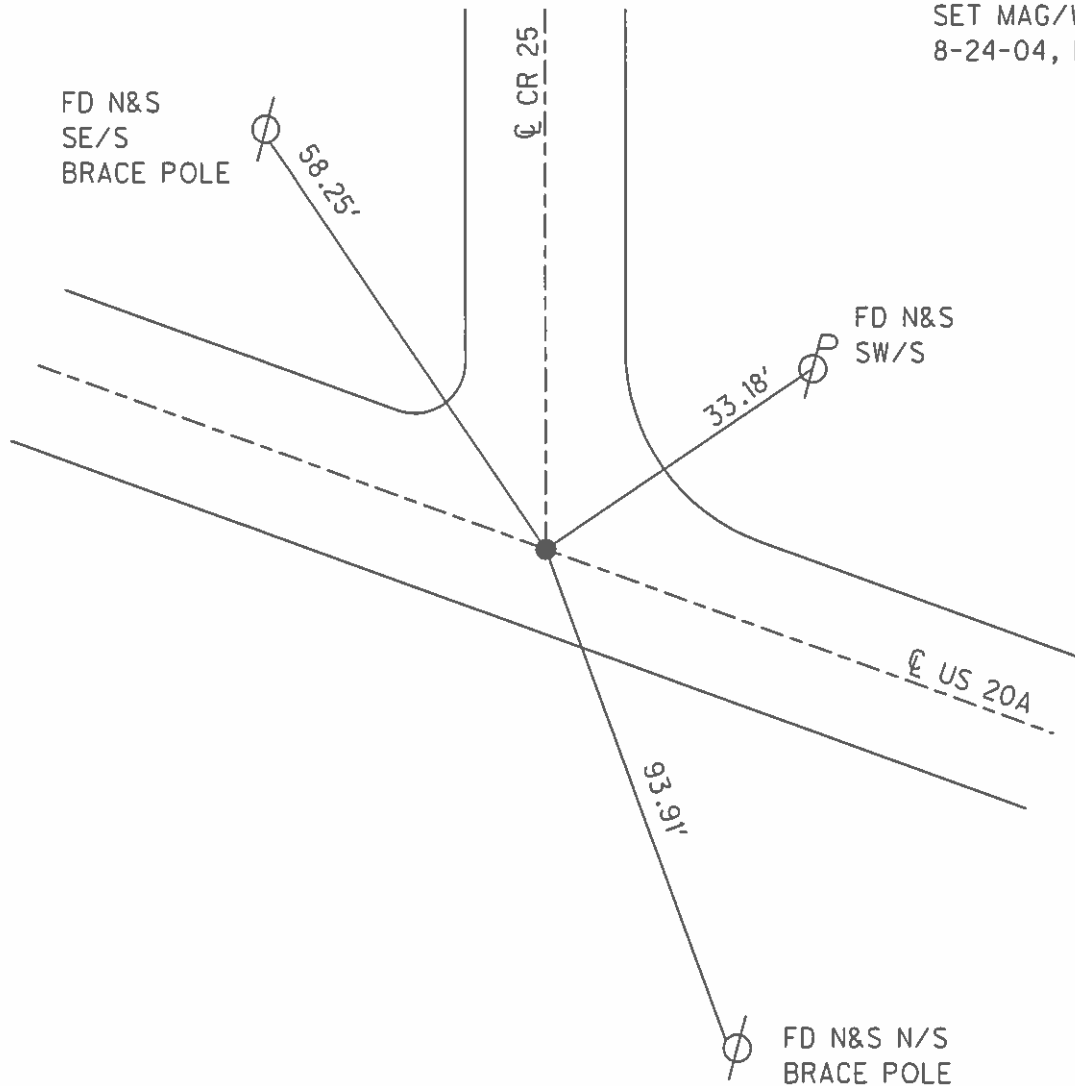
PERSONNEL _____ REFERENCE NO. 5 A SHEET 8 OF 61
 NOTES HOMAN DATE 7/9/04 ROUTE US 20A
 H.C. HUSS WEATHER SUNNY COUNTY FULTON
 R.C. NUHFER TEMP. 75° TOWNSHIP GERMAN
 _____ SECTION 7
 _____ T 7 N R 5 E

TYPE MONUMENT P.K.NAIL
 ON SURFACE - ~~BELOW~~ ON _____
 LEFT-☉ PAV'T-RIGHT _____ ON _____
9.9' TO RT EDGE PAVEMENT
 S.L.M. 108+20



GRID: NORTHING: _____ EASTING: _____

SET MAG/WASHER
 8-24-04, MB



O.D.O.T. DISTRICT 2 SURVEY OFFICE

PERSONNEL

REFERENCE NO. 5-A

SHEET 6 OF 15

NOTES HOMAN

DATE 7-09-04

ROUTE S.R. 20-A

H.C. HUSS

WEATHER SUNNY

COUNTY FULTON

R.C. NUHFER

TEMP. 75°

TOWNSHIP GERMAN

SECTION 7

T 7 N R 5 E

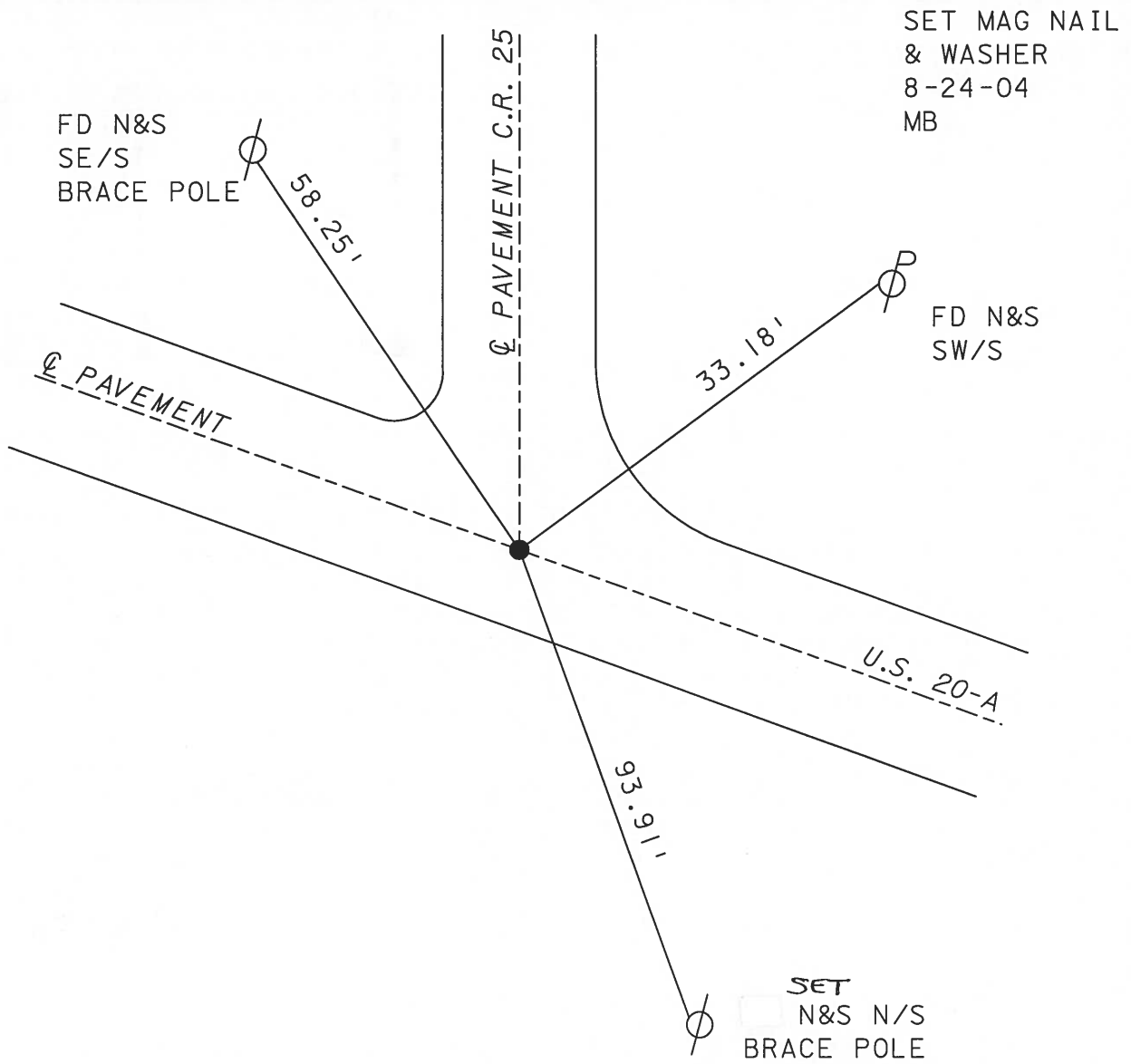
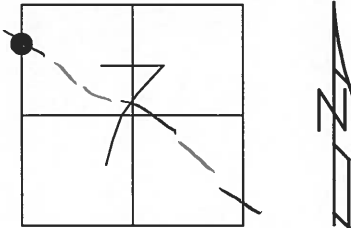
TYPE MONUMENT P.K. NAIL - ORIGIN UNK.

ON SURFACE ~~- BELOW~~ ON _____

~~LEFT~~ Q PAV'T ~~RIGHT~~ ON _____

9.9' TORT EDGE PAVEMENT

S.L.M. _____ 108+20



O.D.O.T. DISTRICT 2 SURVEY OFFICE

PERSONNEL

REFERENCE NO. 5-A

SHEET OF

NOTES LOEHRKE

H.C. CANTERBURY

R.C. Hermiller

VOGEL

DATE 5-18-94

WEATHER Nice

TEMP. +56°

ROUTE S.R. 20-A

COUNTY FULTON

TOWNSHIP GERMAN

SECTION 7

T 7 N R 5 E

RESET - 7-29-94

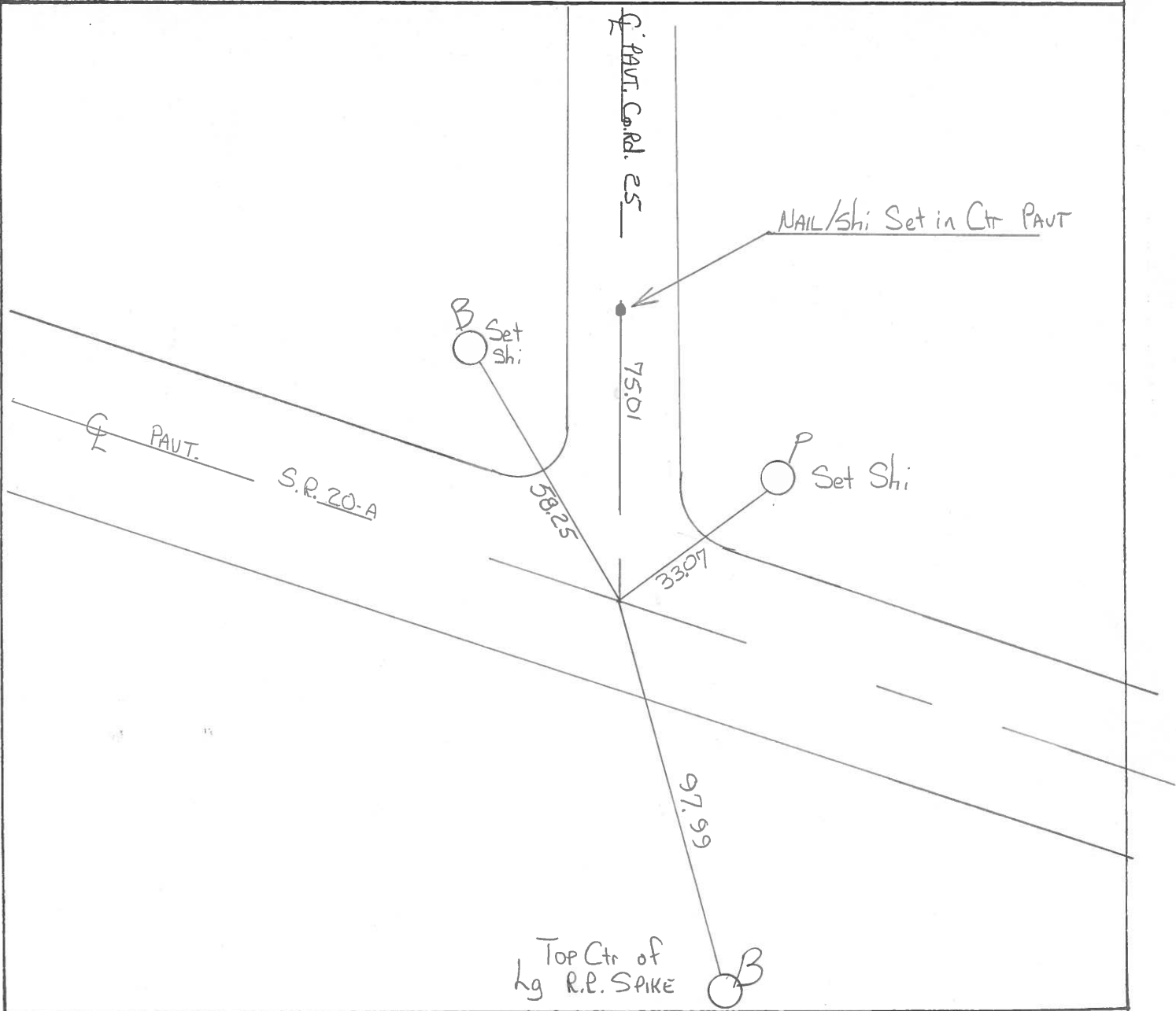
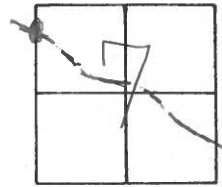
TYPE MONUMENT P.K. Nail - ORIGIN UNK.

ON SURFACE - BELOW Yes

LEFT- ☉ PAVT. - RIGHT Both

 TO EDGE PAVEMENT

S.L.M. 108 +20



Top Ctr of
lg R.P. SAKE