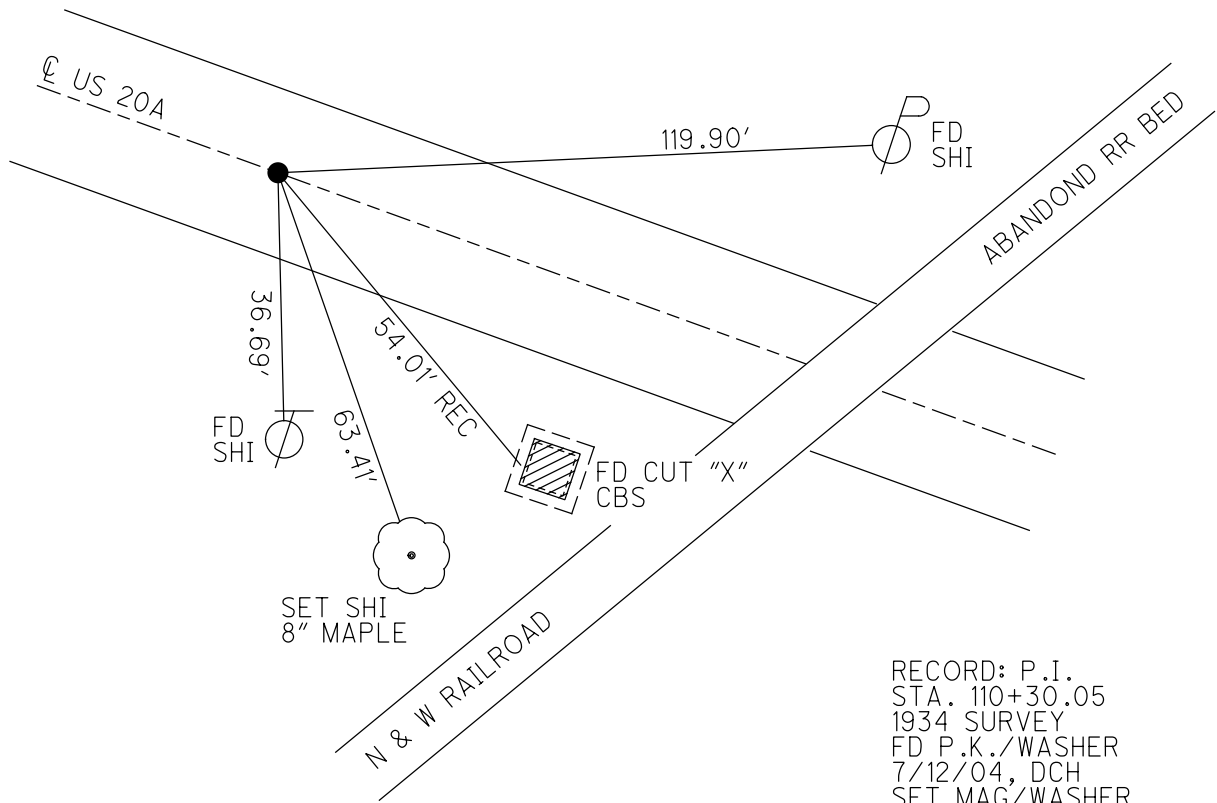
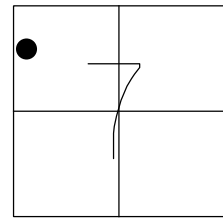


O.D.O.T. DISTRICT 2 SURVEY OFFICE (USE ONLY)

PERSONNEL _____ REFERENCE NO. 6 SHEET 9 OF 63
 NOTES NIESE DATE 2/26/21 ROUTE US 20A
 H.C. RHOADES WEATHER CLOUDY COUNTY FULTON
 R.C. _____ TEMP. 31° TOWNSHIP GERMAN
 DWG BY NIESE PID PAVETRAIN SECTION 7
 T 7 N R 5 E

TYPE MONUMENT MAG/WASHER
 ON SURFACE - ~~BELOW~~ ON
 OFFSET $\text{\textcircled{C}}$ PAVEMENT 1.4' LT : ~~RT~~
8.8' TO LT EDGE PAVEMENT
 STATION: 110+33

HORZ.DATUM: NAD83 2011 GEOID: NAVD88 2012A
 GRID: NORTHING: 703574.360 EASTING: 1464670.653

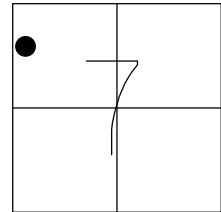


RECORD: P.I.
 STA. 110+30.05
 1934 SURVEY
 FD P.K./WASHER
 7/12/04, DCH
 SET MAG/WASHER
 8/24/04, MB
 FD MAG/WASHER
 REF6
 9/23/20, JFO
 2/26/21, JMR
 8/26/21, JFO

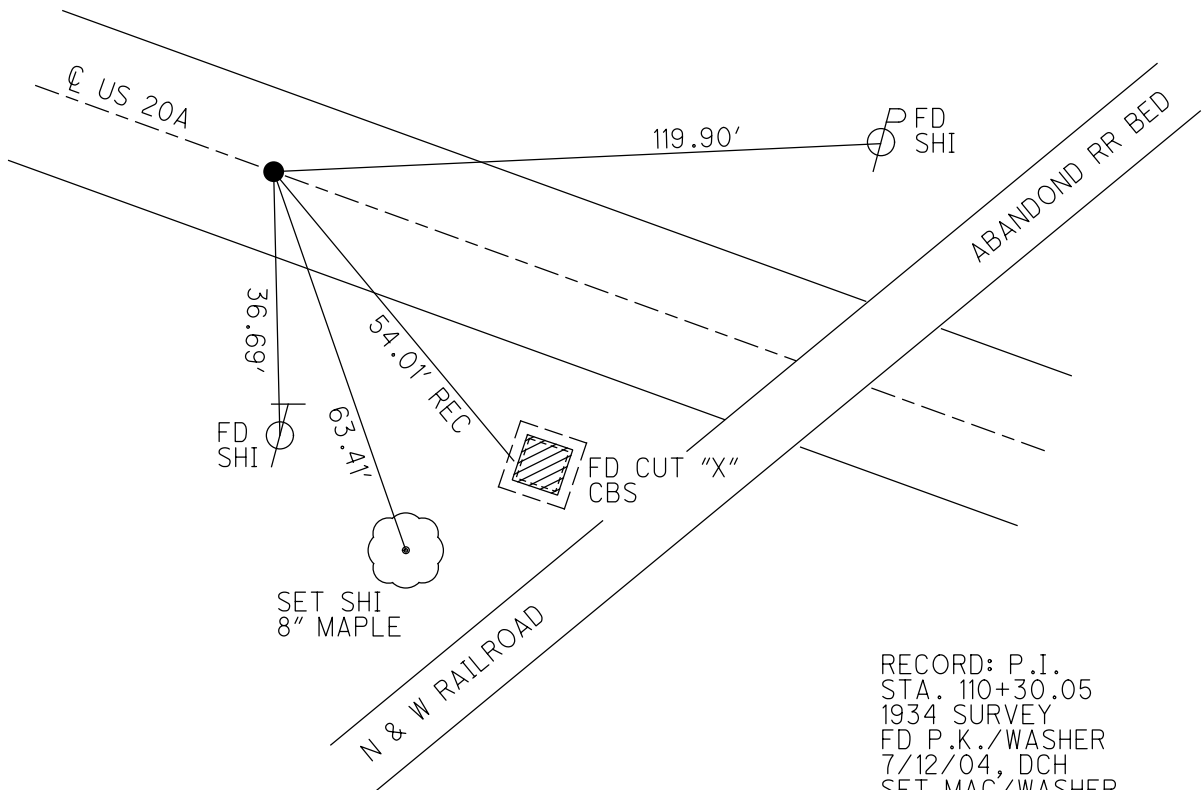
O.D.O.T. DISTRICT 2 SURVEY OFFICE (USE ONLY)

PERSONNEL _____ REFERENCE NO. 6 SHEET 9 OF 63
 NOTES NIESE DATE 2/26/21 ROUTE US 20A
 H.C. RHOADES WEATHER CLOUDY COUNTY FULTON
 R.C. _____ TEMP. 31° TOWNSHIP GERMAN
 DWG BY NIESE PID PAVETRAIN SECTION 7
 T 7 N R 5 E

TYPE MONUMENT MAG/WASHER
 ON SURFACE - ~~BELOW~~ ON
 OFFSET \varnothing PAVEMENT 1.4' LT : ~~RT~~
8.8' TO LT EDGE PAVEMENT
 STATION: 110+33



HORIZ.DATUM: NAD83 2011 GEOID: NAVD88 2012A
 GRID: NORTHING: 703574.360 EASTING: 1464670.653



RECORD: P.I.
 STA. 110+30.05
 1934 SURVEY
 FD P.K./WASHER
 7/12/04, DCH
 SET MAG/WASHER
 8/24/04, MB
 FD MAG/WASHER
 REF6
 9/23/20, JFO
 2/26/21, JMR

O.D.O.T. DISTRICT 2 SURVEY OFFICE (USE ONLY)

PERSONNEL

REFERENCE NO. 6

SHEET 9 OF 63

NOTES RHOADES DATE 9/23/20
 H.C. O'DONNELL WEATHER SUNNY
 R.C. AUBLE TEMP. 70°

ROUTE US 20A
 COUNTY FULTON
 TOWNSHIP GERMAN
 SECTION 7

DWG BY RHOADES PID PAVETRAIN

T 7 N R 5 E

TYPE MONUMENT MAG/WASHER

ON SURFACE - ~~BELOW~~ ON

OFFSET CL PAVEMENT 1.4' LT : ~~RT~~

8.8' TO LT EDGE PAVEMENT

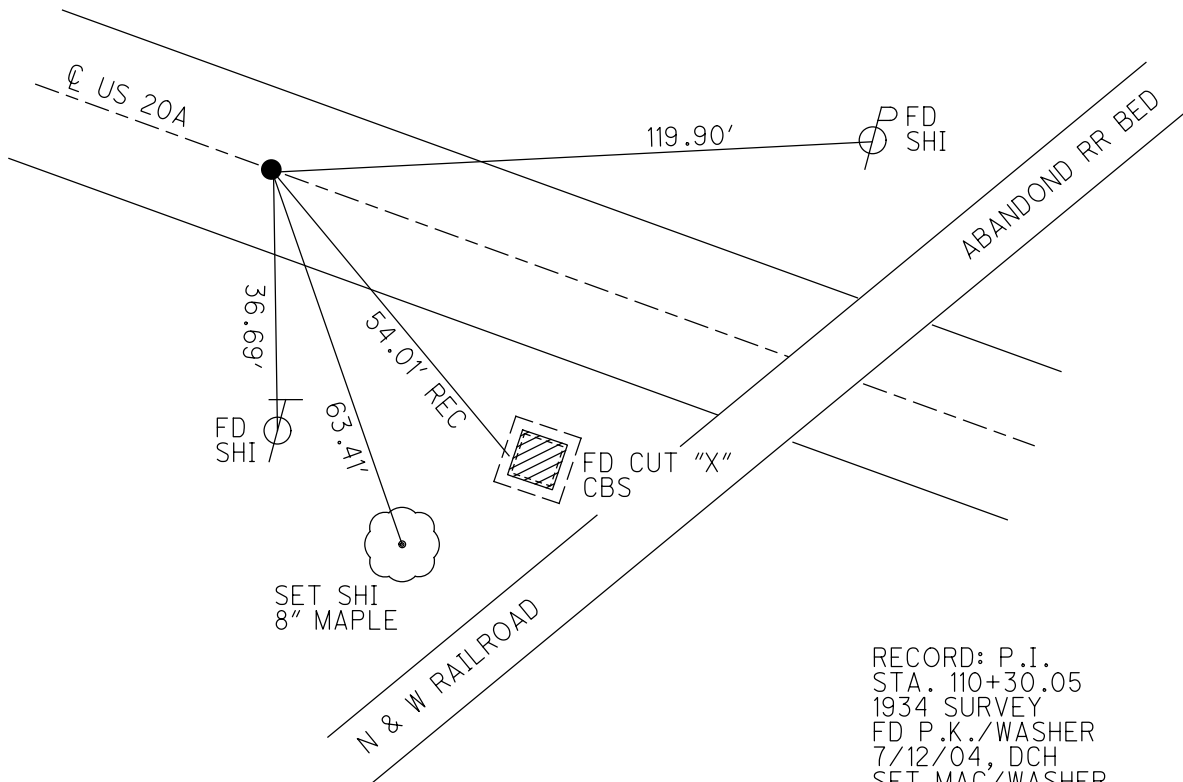
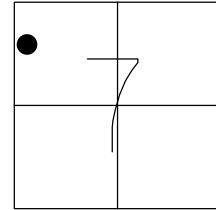
STATION: 110+33

HORZ.DATUM: NAD83 2011

GEOID: NAVD88 2012A

GRID: NORTHING: 703574.360

EASTING: 1464670.653

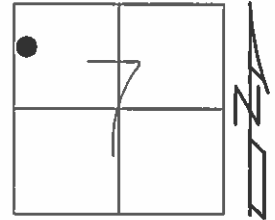


RECORD: P.I.
 STA. 110+30.05
 1934 SURVEY
 FD P.K./WASHER
 7/12/04, DCH
 SET MAG/WASHER
 8/24/04, MB
 FD MAG/WASHER
 REF6
 9/23/20, JFO

O.D.O.T. DISTRICT 2 SURVEY OFFICE (USE ONLY)

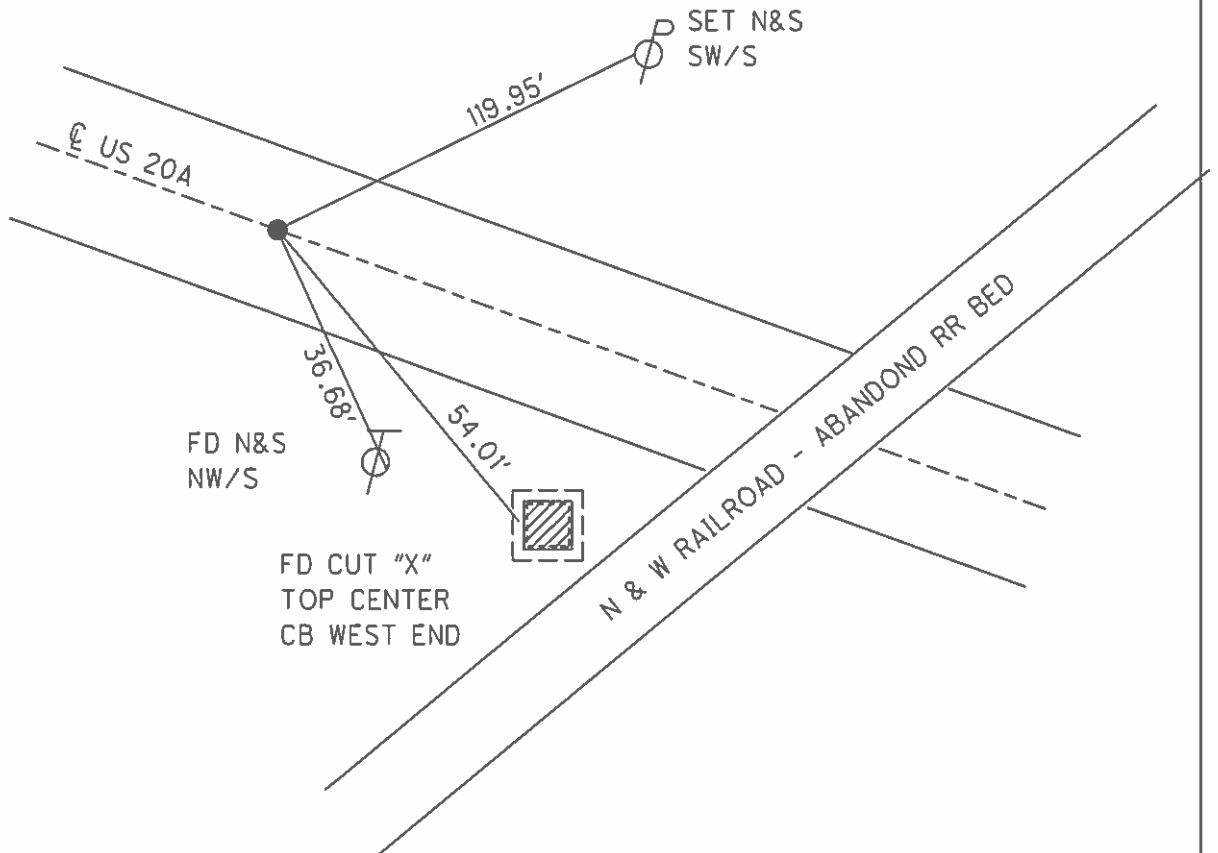
PERSONNEL _____ REFERENCE NO. 6 SHEET 9 OF 61
 NOTES HUSS DATE 7/12/04 ROUTE US 20A
 H.C. BARNHISEL WEATHER FAIR COUNTY FULTON
 R.C. ADKINS TEMP. 80° TOWNSHIP GERMAN
 _____ SECTION 7
 _____ T 7 N R 5 E

TYPE MONUMENT P.K./WASHER
 ON SURFACE - ~~BELOW~~ ON _____
 LEFT - ~~C PAV'T - RIGHT~~ _____ 1.4'
8.8' TO LT EDGE PAVEMENT
 S.L.M. 110+33
 GRID: NORTHING: _____ EASTING: _____



RECORD: P.I. STA 110+30.05 (1934 SURV.)

SET MAG/WASHER
 8-24-04, MB



O.D.O.T. DISTRICT 2 SURVEY OFFICE

PERSONNEL _____

REFERENCE NO. 6

SHEET 7 OF 15

NOTES HUSS

DATE 7-12-04

ROUTE S.R. U.S. 20-A

H.C. BARNHISEL

WEATHER FAIR

COUNTY FULTON

R.C. ADKINS

TEMP. 80°

TOWNSHIP GERMAN

SECTION 7

T 7 N R 5 E

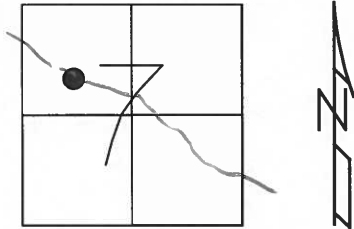
TYPE MONUMENT PK & WASHER

ON SURFACE ~~- BELOW~~ ON _____

LEFT ~~PAV'T~~ RIGHT 1.4' LT

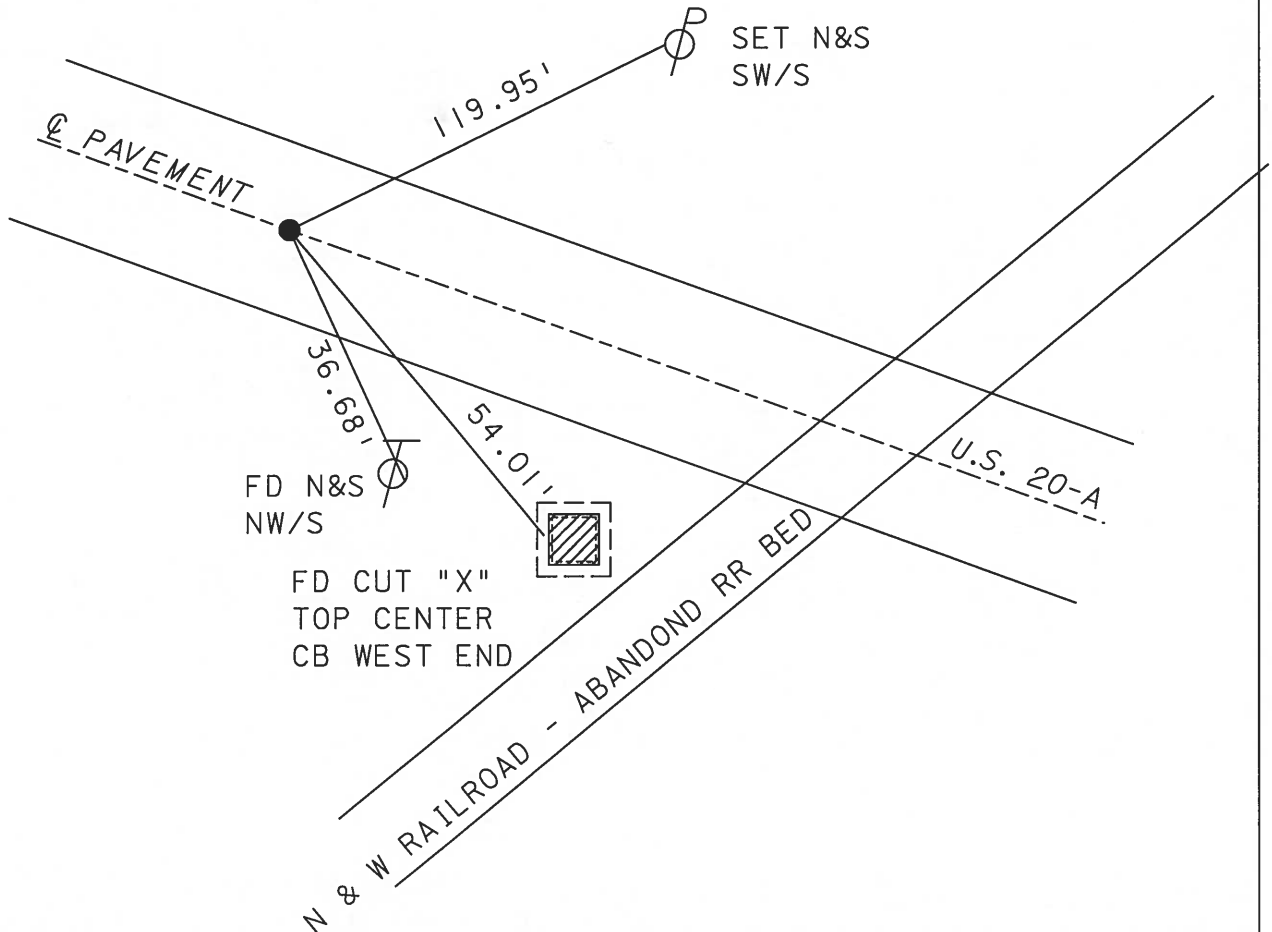
8.8' TO T EDGE PAVEMENT

S.L.M. 110+33



RECORD: P.I. STA 110+30.05 (1934 SURV.)

SET MAG NAIL
& WASHER
8-24-04
MB



O.D.O.T. DISTRICT 2 SURVEY OFFICE

PERSONNEL

REFERENCE NO. 6 SHEET 6 OF

NOTES LOEHRKE

H.C. CANTERBURY

R.C. HERMILLER

DATE 5-18-94

WEATHER NICE

TEMP. +55

ROUTE S.R. U.S. 20-A

COUNTY Fulton

TOWNSHIP German

SECTION 7

T 7 N R 5 E

TYPE MONUMENT SM. RR SPIKE

~~ON SURFACE~~ - BELOW 2 1/2" BELOW

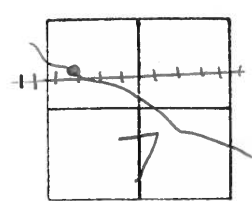
LEFT-~~C~~ PAV'T. - RIGHT 0.8' Lt.

TO EDGE PAVEMENT

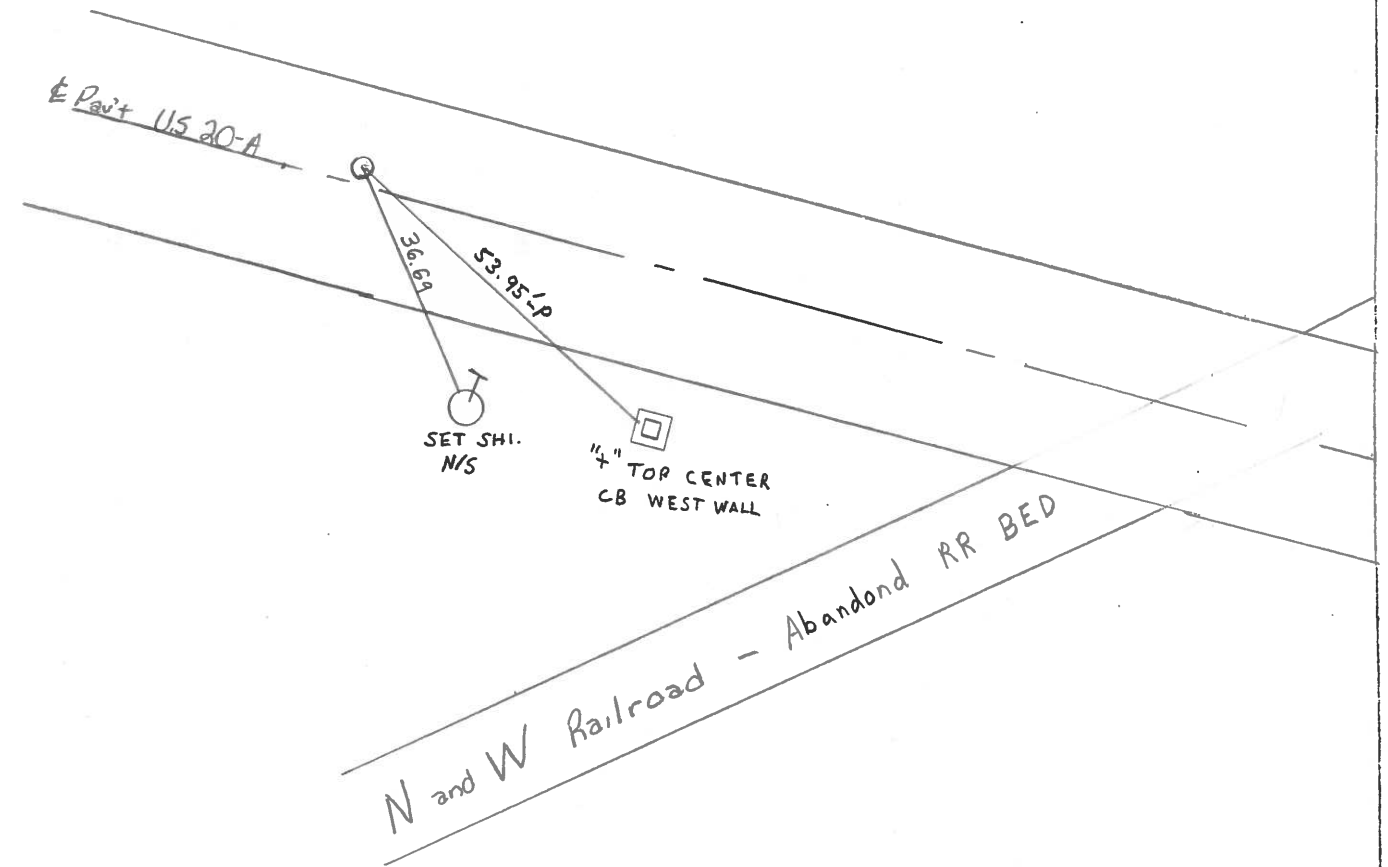
S.L.M. STA 110 + 33

Set P.K. / WASHER

7-29-94
e.l.



Record: P.I. STA 110 + 30.05
(1934 SURV.)



County FULTON S.R. US 20-A

Date JAN 27, 1983

Township GERMAN

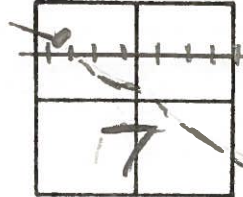
Weather OVERCAST

Section 7

Temp. +28°

T7N, R5E

Personnel HOFFMAN

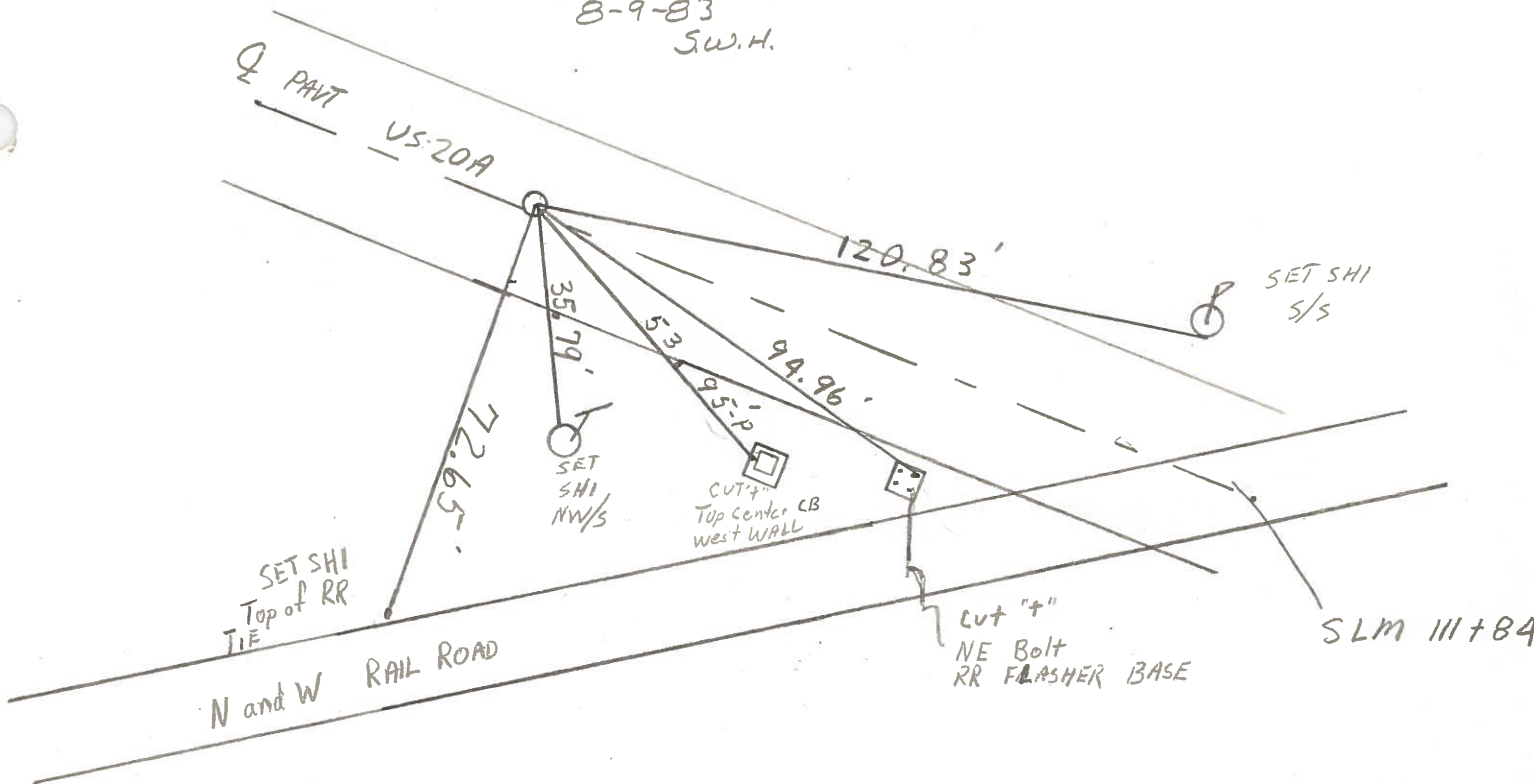


6-8 CREW

Fd: 1" PIPE 2 1/2" Below SURFACE
0.8' Lt of Q PAVT
8.9' to NEP
10.8' to SEP

SLM 110 + 27

SET SMALL R.R. SPK.
8-9-83
S.W.H.



RECORD: PI Sta 110 + 30.05 (1934 SURV)

PERSONNEL TITLE PERSONNEL TITLE

Red Beach
Newcomb
Knape

COUNTY Fulton DATE Sept 73

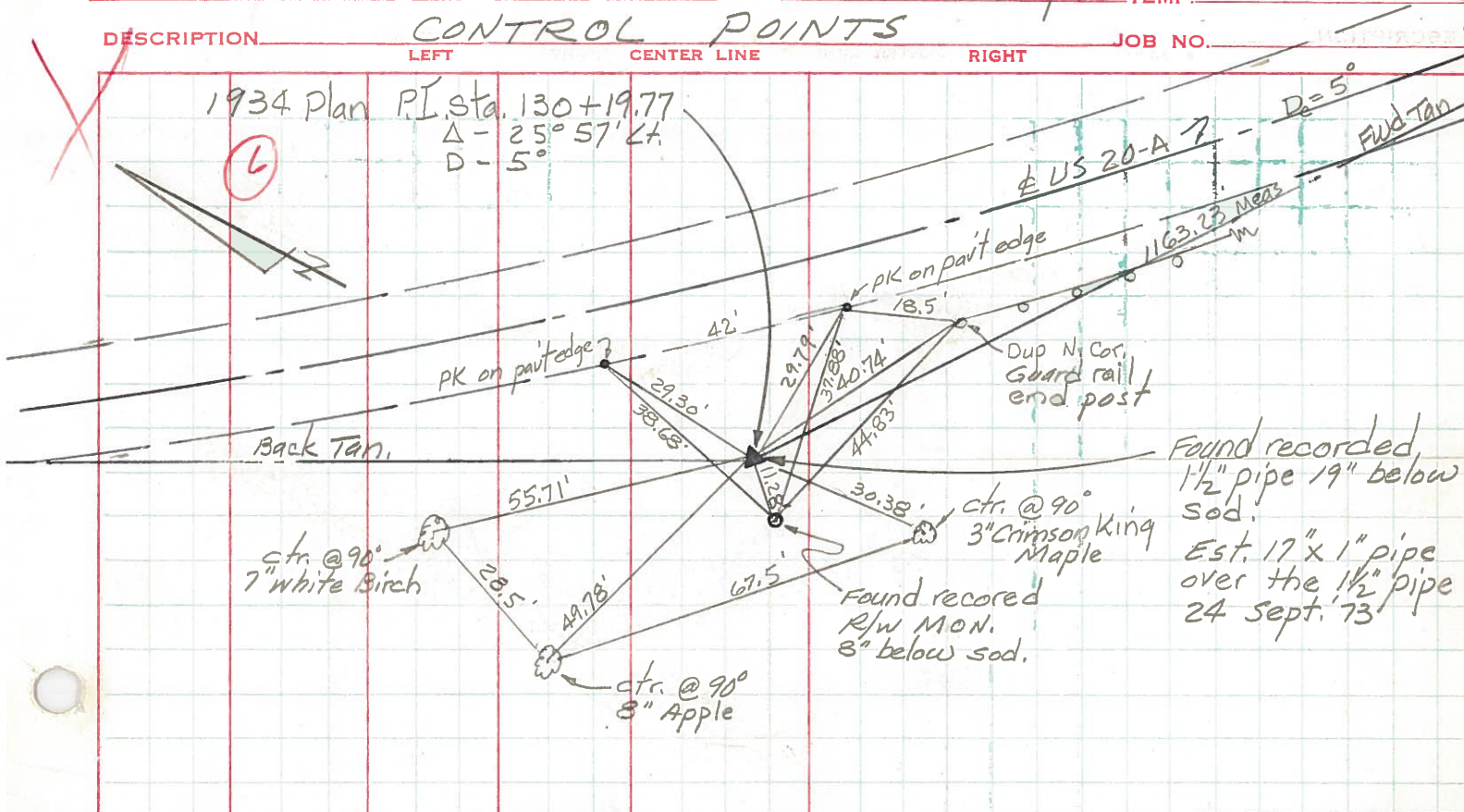
S. R. US 20-A WEATHER _____

SEC. German Twp. TEMP. _____

DESCRIPTION CONTROL POINTS JOB NO. _____

1934 Plan P.I. Sta. 130+19.77
 $\Delta - 25^\circ 57' Lt.$
 $D_c - 5^\circ$

(6)

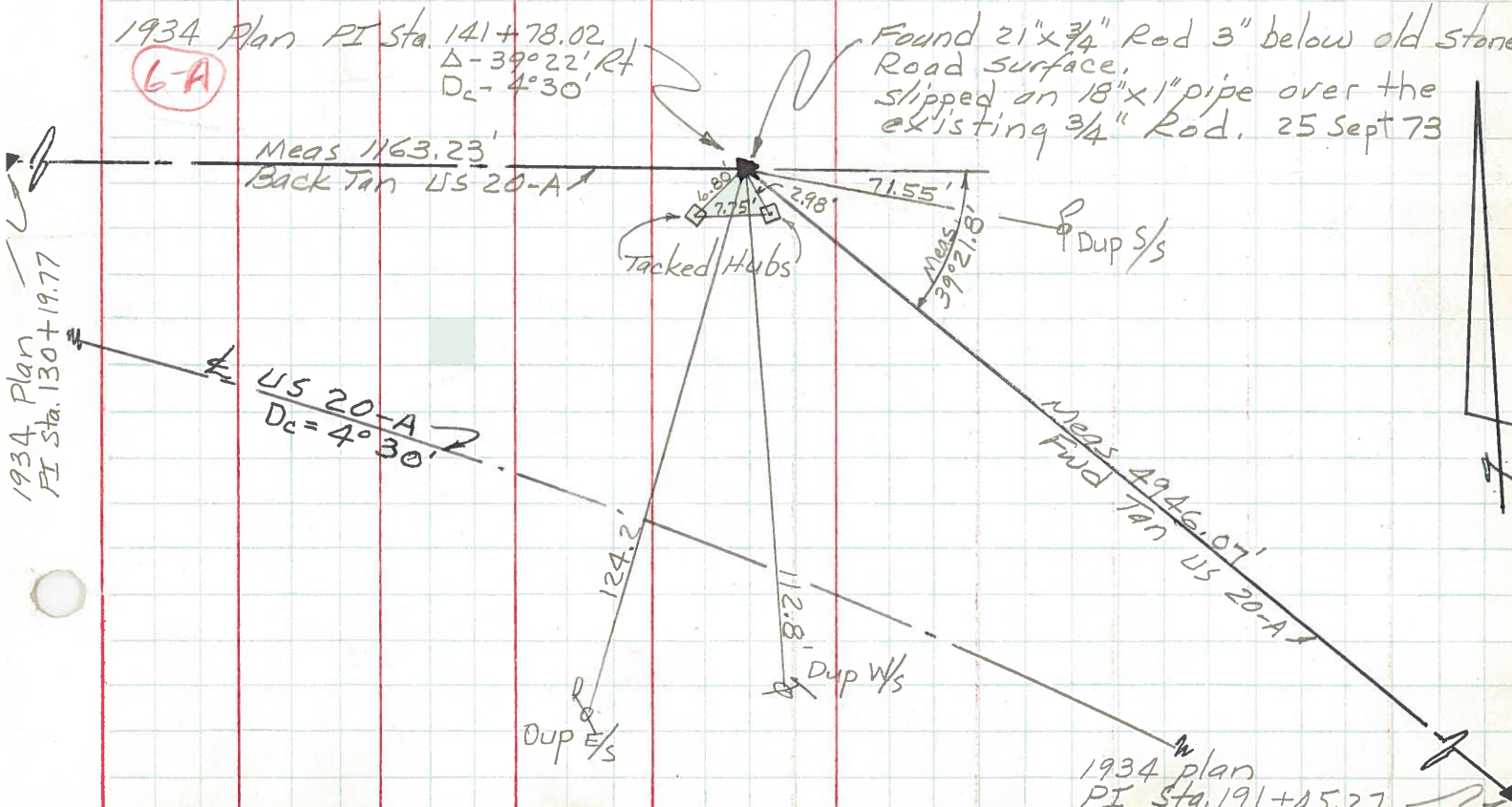


Found recored
 1 1/2" pipe 19" below
 sod.
 Est. 17" x 1" pipe
 over the 1 1/2" pipe
 24 Sept. '73

Found 21" x 3/4" Rod 3" below old Stone
 Road surface.
 Slipped on 18" x 1" pipe over the
 existing 3/4" Rod. 25 Sept 73

1934 Plan P.I. Sta. 141+78.02
 $\Delta - 39^\circ 22' Rt$
 $D_c - 4^\circ 30'$

(6-A)



1934 Plan
 P.I. Sta. 130+19.77

1934 plan
 P.I. Sta. 191+05.77

PERSONNEL TITLE PERSONNEL TITLE

Red Beach
Newcomb
Knappe

COUNTY Fulton

DATE Sept. 73

S. R. U.S. 20-A

WEATHER _____

SEC. German Twp.

TEMP. _____

DESCRIPTION _____

CONTROL POINTS

JOB NO. _____

LEFT

CENTER LINE

RIGHT

