

O.D.O.T. DISTRICT 2 SURVEY OFFICE (USE ONLY)

PERSONNEL

REFERENCE NO. 6 A

SHEET 10 OF 63

NOTES NIESE

DATE 2/26/21

ROUTE US 20A

H.C. RHOADES

WEATHER CLOUDY

COUNTY FULTON

R.C. \_\_\_\_\_

TEMP. 31°

TOWNSHIP GERMAN

DWG BY NIESE

PID PAVETRAIN

SECTION 7

T 7 N R 5 E

TYPE MONUMENT MAG/WASHER

ON SURFACE - ~~BELOW~~ ON

OFFSET Q PAVEMENT ON LT : RT

10.77' TO LT EDGE PAVEMENT

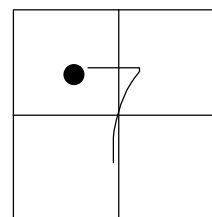
STATION: 125+09

HORZ.DATUM: NAD83 2011

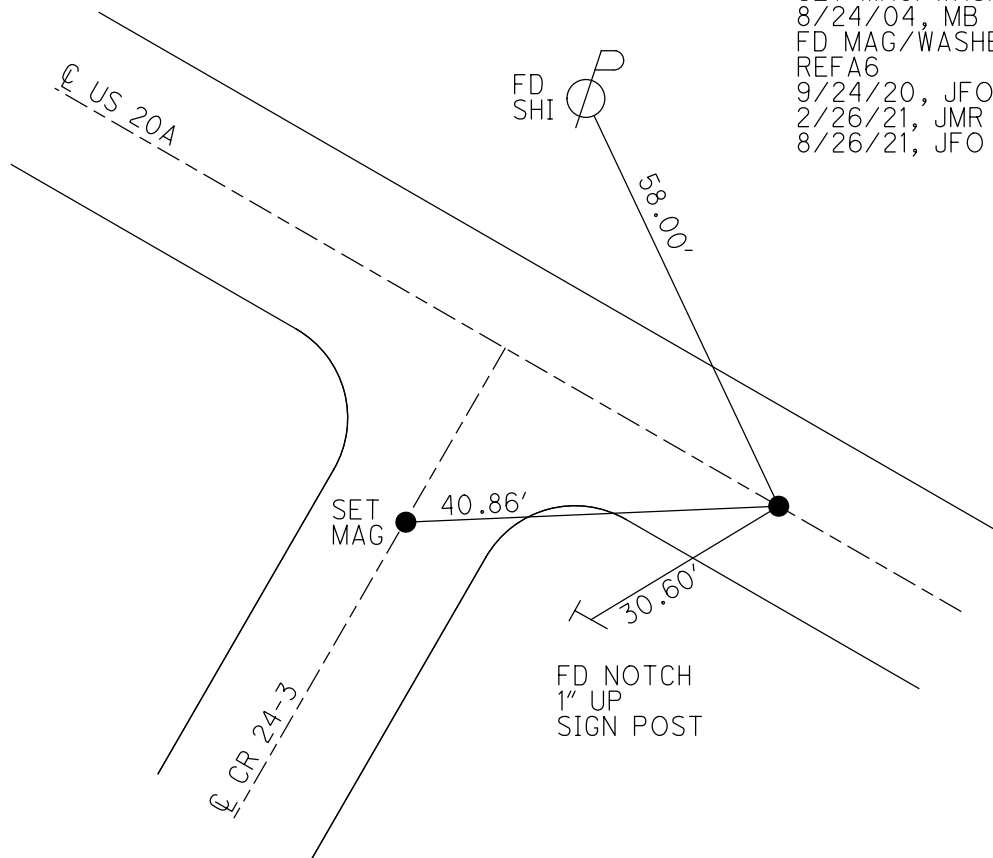
GEOID: NAVD88 2012A

GRID: NORTHING: 702906.525

EASTING: 1465988.559



RECORD: P.O.T.  
 STA. 125+07.57  
 PRE 1934  
 FD P.K./WASHER  
 7/12/04, MB  
 SET MAG/WASHER  
 8/24/04, MB  
 FD MAG/WASHER  
 REFA6  
 9/24/20, JFO  
 2/26/21, JMR  
 8/26/21, JFO

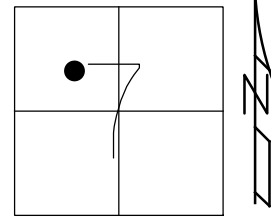


O.D.O.T. DISTRICT 2 SURVEY OFFICE (USE ONLY)

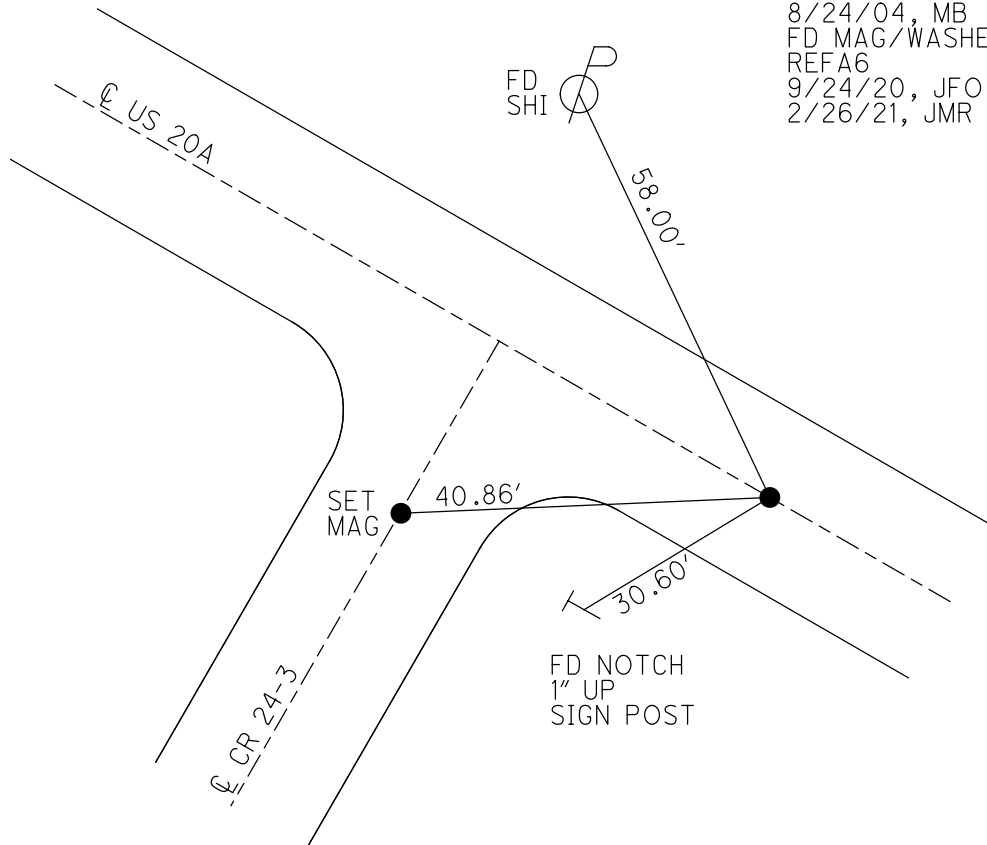
PERSONNEL \_\_\_\_\_ REFERENCE NO. 6 A SHEET 10 OF 63  
 NOTES NIESE DATE 2/26/21 ROUTE US 20A  
 H.C. RHOADES WEATHER CLOUDY COUNTY FULTON  
 R.C. \_\_\_\_\_ TEMP. 31° TOWNSHIP GERMAN  
 DWG BY NIESE PID PAVETRAIN SECTION 7  
 T 7 N R 5 E

TYPE MONUMENT MAG/WASHER  
 ON SURFACE - ~~BELOW~~ ON  
 OFFSET Q PAVEMENT ON LT : RT  
10.77' TO LT EDGE PAVEMENT  
 STATION: 125+09

HORZ.DATUM: NAD83 2011 GEOID: NAVD88 2012A  
 GRID: NORTHING: 702906.525 EASTING: 1465988.559



RECORD: P.O.T.  
 STA. 125+07.57  
 PRE 1934  
 FD P.K./WASHER  
 7/12/04, MB  
 SET MAG/WASHER  
 8/24/04, MB  
 FD MAG/WASHER  
 REFA6  
 9/24/20, JFO  
 2/26/21, JMR

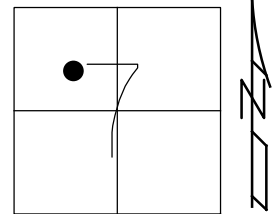


O.D.O.T. DISTRICT 2 SURVEY OFFICE (USE ONLY)

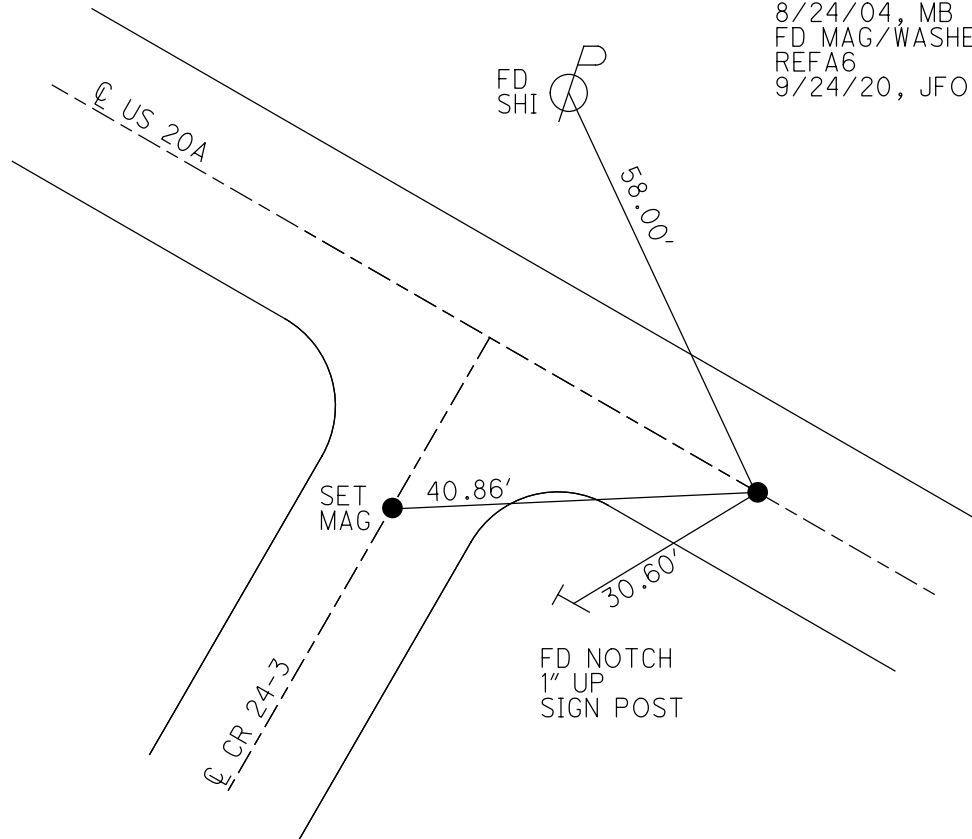
PERSONNEL	REFERENCE NO. <u>6 A</u>	SHEET <u>10</u> OF <u>63</u>
NOTES <u>RHOADES</u>	DATE <u>9/24/20</u>	ROUTE <u>US 20A</u>
H.C. <u>O'DONNELL</u>	WEATHER <u>SUNNY</u>	COUNTY <u>FULTON</u>
R.C. <u>AUBLE</u>	TEMP. <u>56°</u>	TOWNSHIP <u>GERMAN</u>
		SECTION <u>7</u>
DWG BY <u>RHOADES</u>	PID <u>PAVETRAIN</u>	T <u>7</u> N R <u>5</u> E

TYPE MONUMENT MAG/WASHER  
 ON SURFACE - ~~BELOW~~ ON  
 OFFSET 0 PAVEMENT ON LT : RT  
10.77' TO LT EDGE PAVEMENT  
 STATION: 125+09

HORIZ.DATUM: NAD83 2011 GEOID: NAVD88 2012A  
 GRID: NORTHING: 702906.525 EASTING: 1465988.559



RECORD: P.O.T.  
 STA. 125+07.57  
 PRE 1934  
 FD P.K./WASHER  
 7/12/04, MB  
 SET MAG/WASHER  
 8/24/04, MB  
 FD MAG/WASHER  
 REFA6  
 9/24/20, JFO



O.D.O.T. DISTRICT 2 SURVEY OFFICE

PERSONNEL

REFERENCE NO. 6-A

SHEET 8 OF 15

NOTES HUSS

DATE 7-12-04

ROUTE U.S. 20-A

H.C. BARNHISEL

WEATHER FAIR

COUNTY FULTON

R.C. ADKINS

TEMP. 80°

TOWNSHIP GERMAN

SECTION 7

T 7 N R 5 E

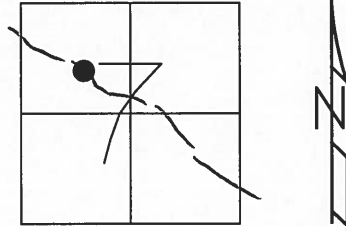
TYPE MONUMENT PK & WASHER

ON SURFACE ~~- BELOW~~ ON

~~LEFT~~ Q PAV'T ~~RIGHT~~ ON

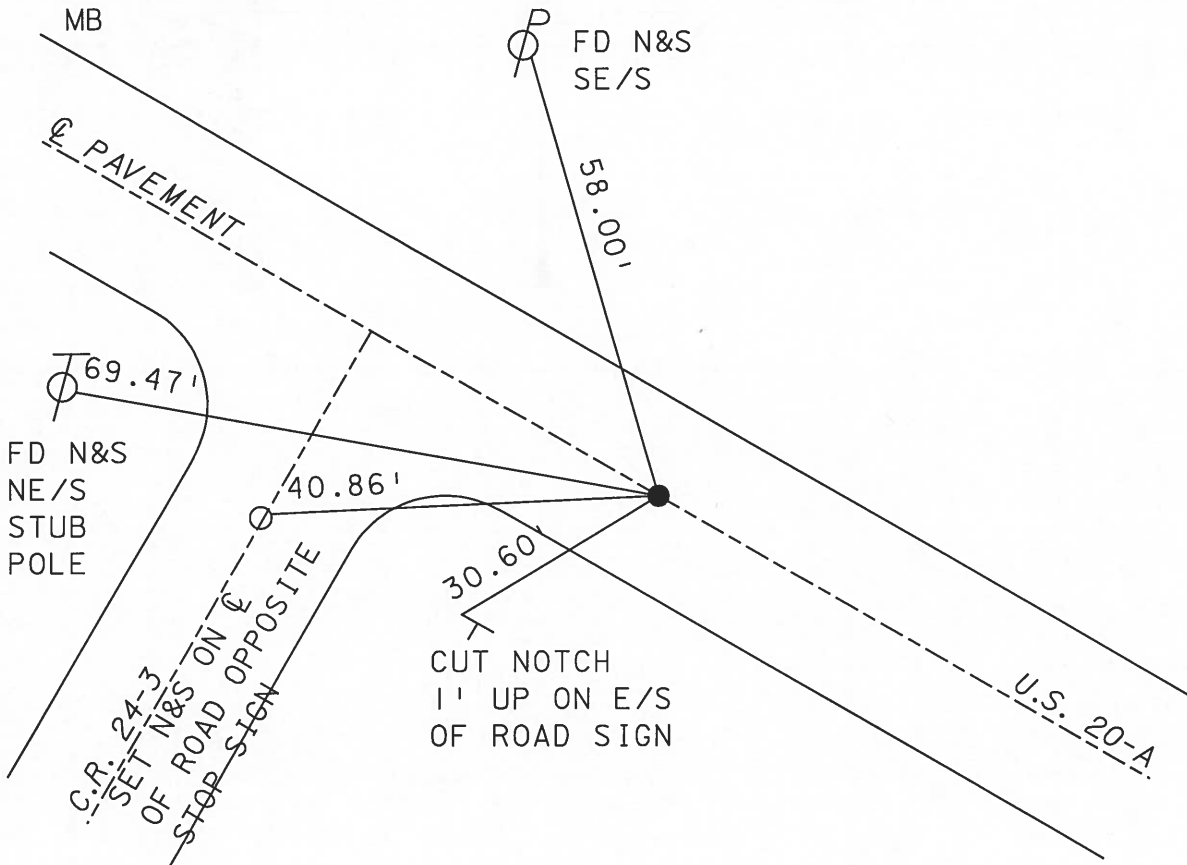
10.7 TO LT. EDGE PAVEMENT

S.L.M. 125+09



SET MAG NAIL  
& WASHER  
8-24-04  
MB

RECORD POT STA 125+07.57 (PRE 1934)



O.D.O.T. DISTRICT 2 SURVEY OFFICE

PERSONNEL

REFERENCE NO. 6-A

SHEET 7 OF       

NOTES LOHRKE

H.C. CANTERBURY

R.C. HERMILLER

DATE 5-18-94

WEATHER NICE

TEMP. +64°

ROUTE U.S. 20-A

COUNTY Fulton

TOWNSHIP German

SECTION 7

T 7 N R 5 E

TYPE MONUMENT SM. RR SPIKE

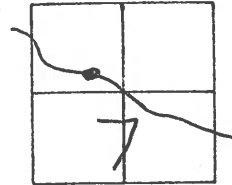
ON SURFACE BELOW

LEFT - @ PAVT. - RIGHT ON @ of PAVT

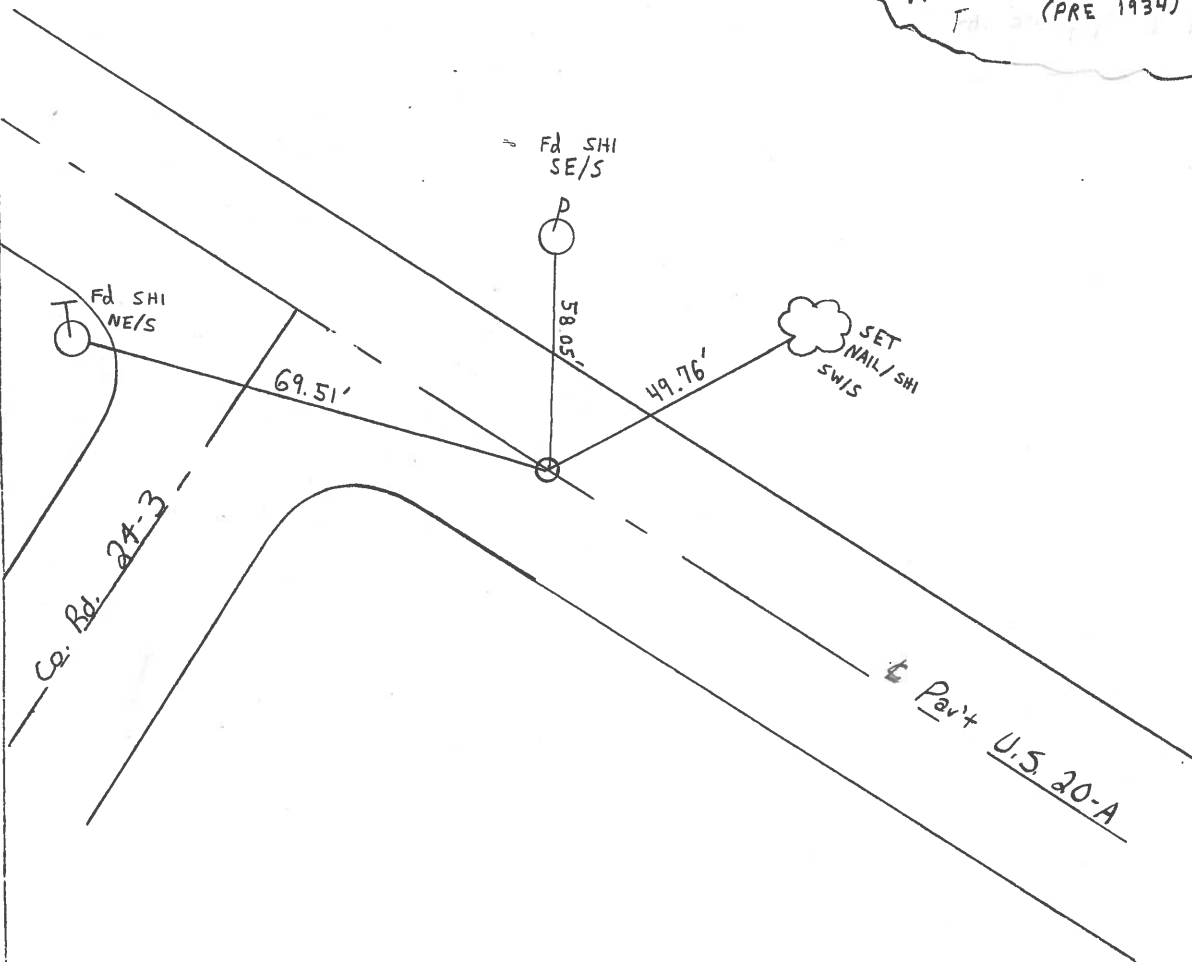
10.7 TO 1+ EDGE PAVEMENT

S.L.M. STA 125+09

Set P.K/WASHER  
7-29-94  
C.L.



Record: PDT STA 125+07.57  
(PRE 1934)



County FULTON S.R. US 20A

Date JAN 27, 1983

Township GERMAN

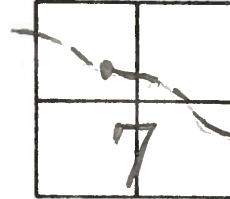
Weather OVERCAST

Section 7

Temp. +28°

T2N, R5E

Personnel HOFFMAN



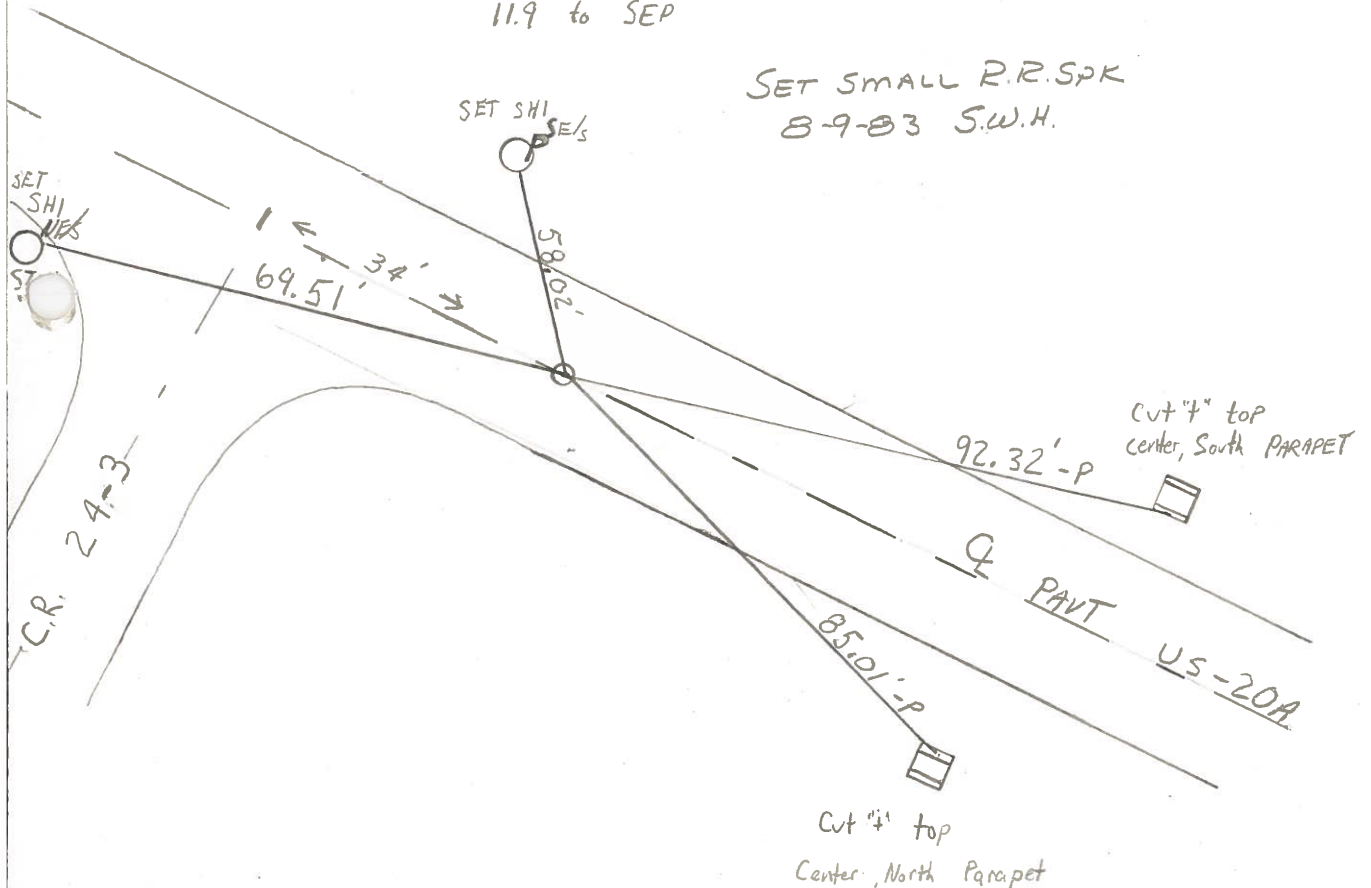
# 6-A

CREW

Fd. 3/4" PIPE, 1" Below SURFACE  
ON Q of PAVT US-20A  
9.8 to NEP  
11.9 to SEP

SLM 125+03

SET SMALL R.R. SPK  
8-9-83 S.W.H.



RECORD: POT STA 125+07.57 (PRE 1934)



PERSONNEL TITLE PERSONNEL TITLE

Red Beach  
Newcomb  
Knappe

COUNTY Fulton

DATE Sept. 73

S. R. U.S. 20-A

WEATHER \_\_\_\_\_

SEC. German Twp.

TEMP. \_\_\_\_\_

DESCRIPTION \_\_\_\_\_

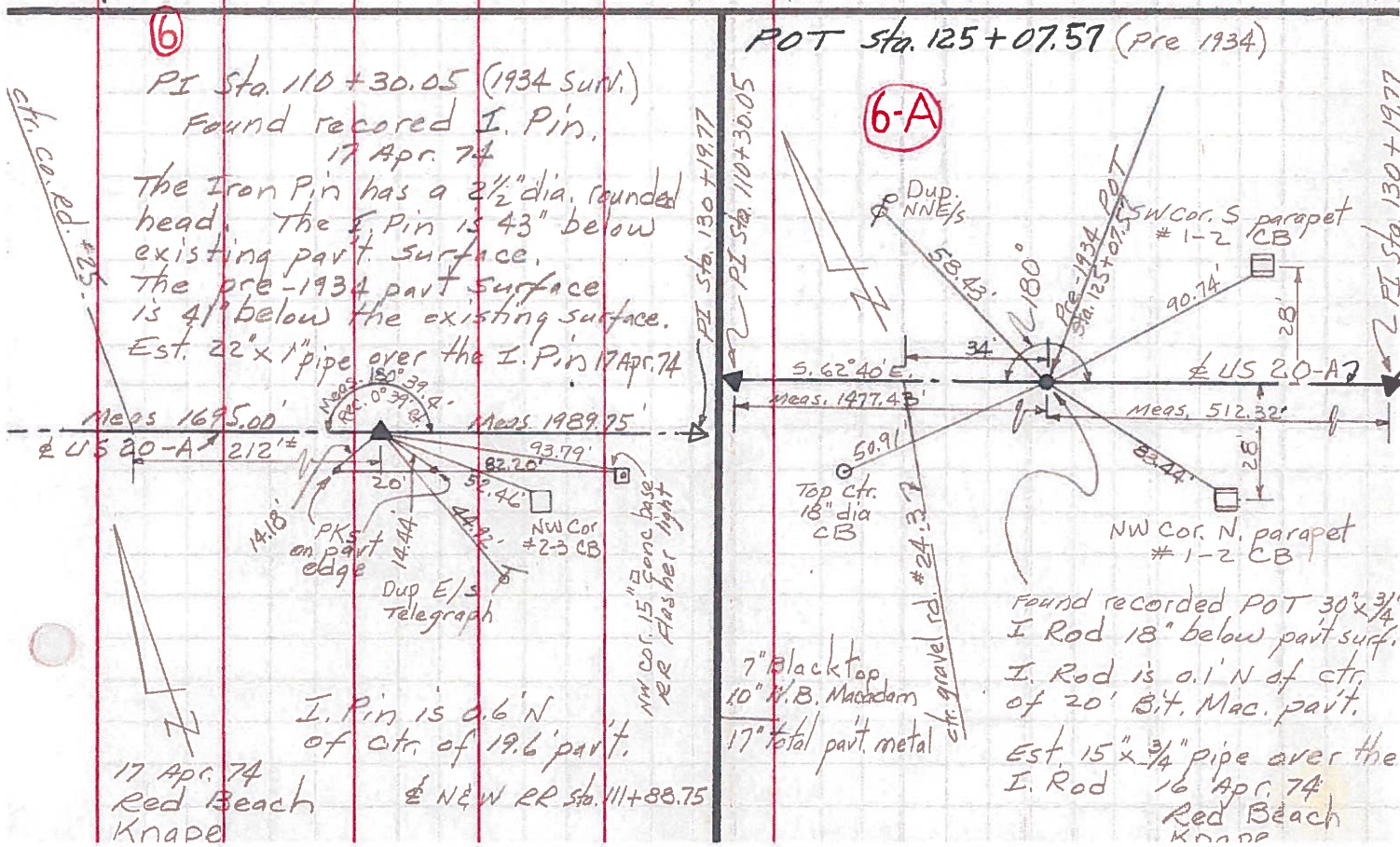
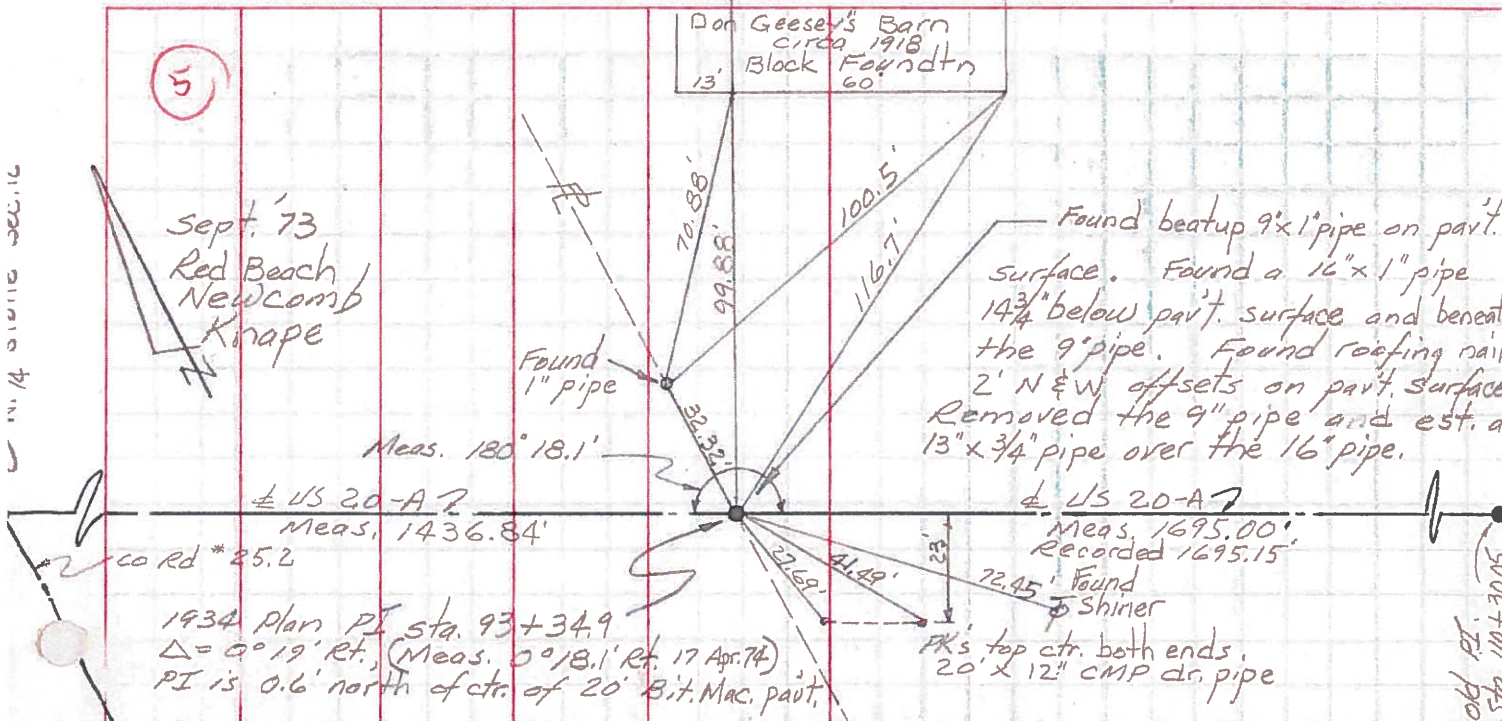
### CONTROL POINTS

JOB NO. \_\_\_\_\_

LEFT

CENTER LINE

RIGHT





PERSONNEL TITLE PERSONNEL TITLE

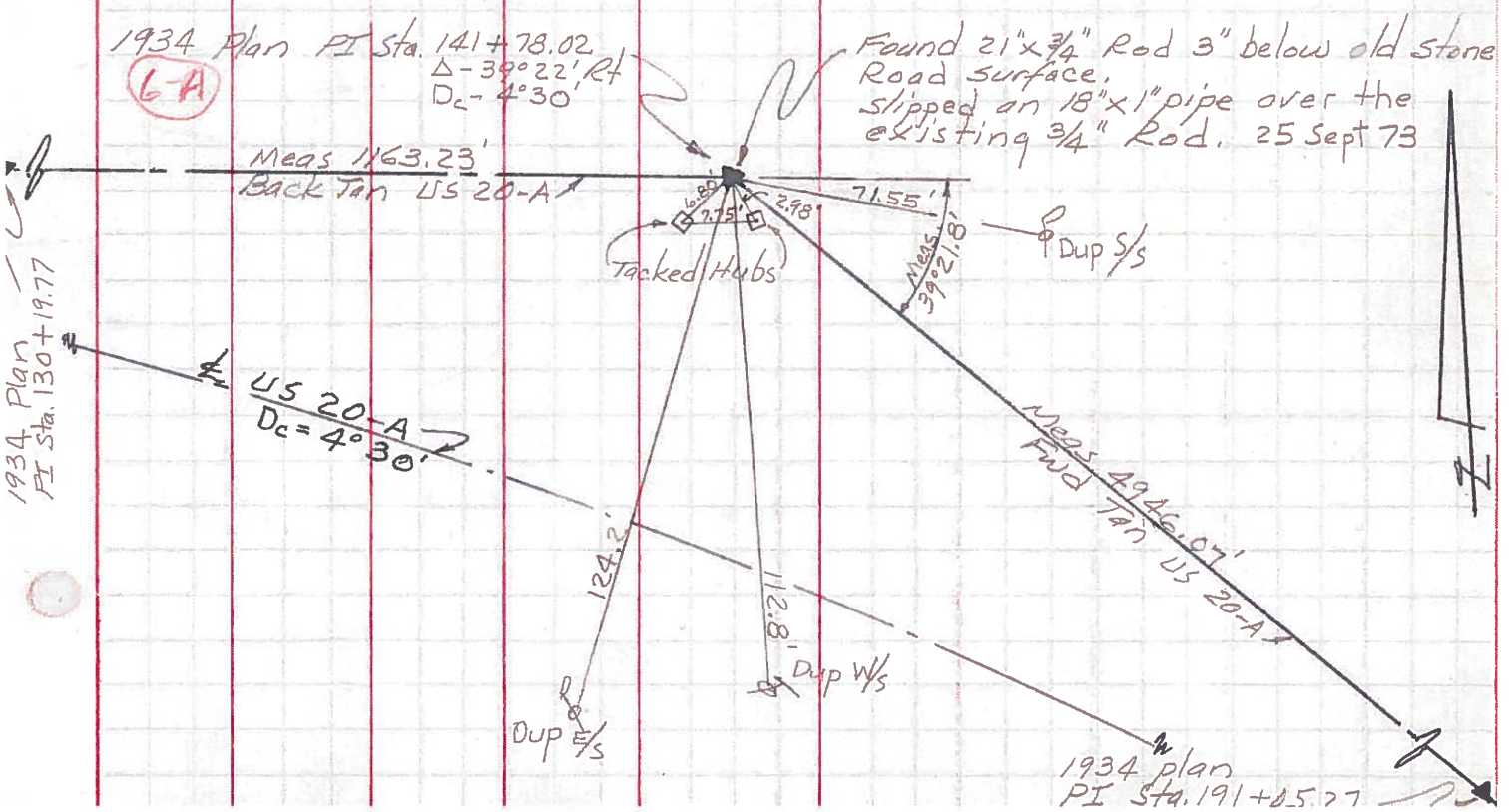
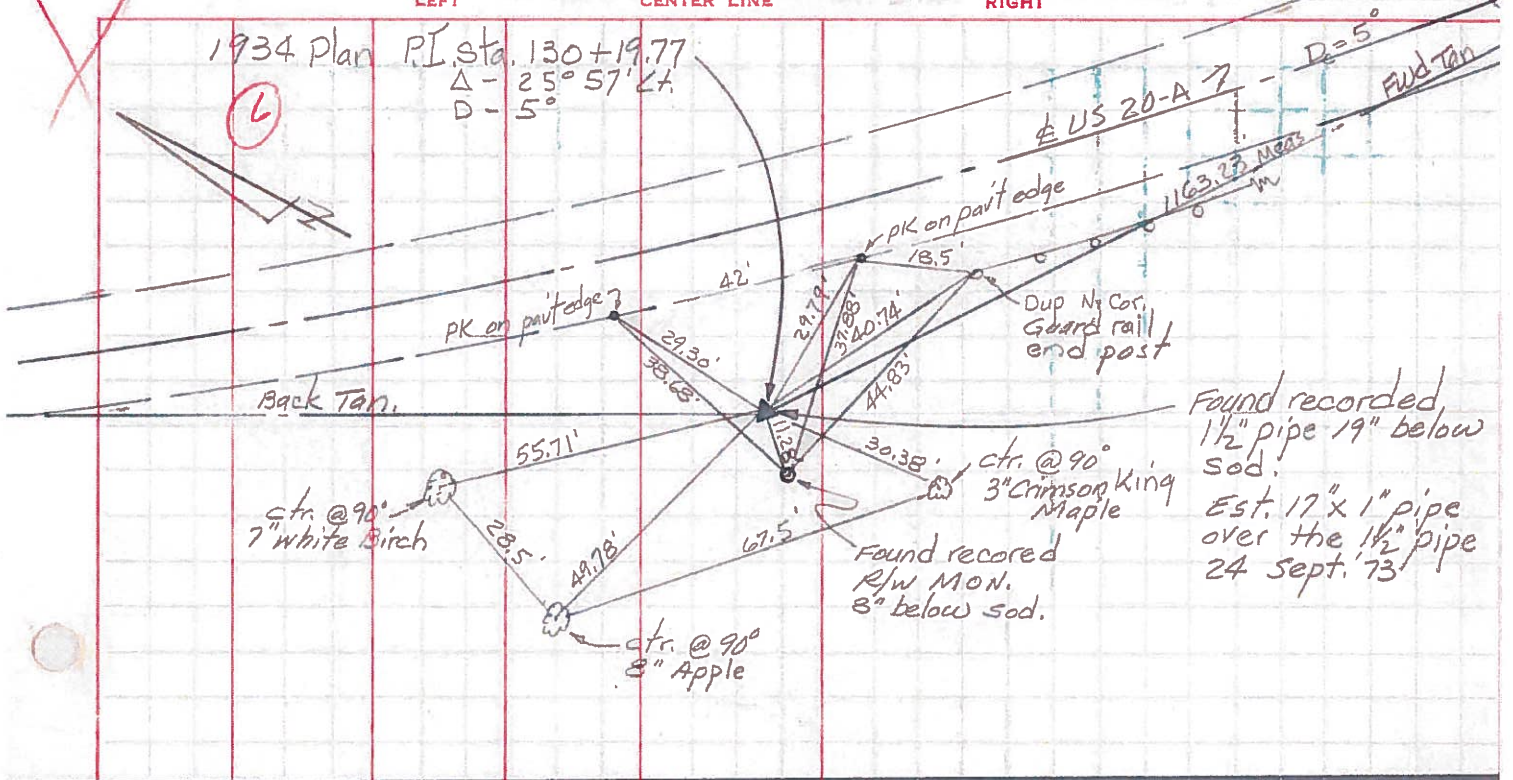
Red Beach  
Newcomb  
Knape

COUNTY Fulton DATE Sept 73

S. R. US 20-A WEATHER \_\_\_\_\_

SEC. German Twp. TEMP \_\_\_\_\_

DESCRIPTION CONTROL POINTS JOB NO. \_\_\_\_\_



1934 Plan PI Sta. 130+19.77

1934 plan PI Sta. 191+25.27