

O.D.O.T. DISTRICT 2 SURVEY OFFICE (USE ONLY)

PERSONNEL _____

REFERENCE NO. 6 BB

SHEET 12 OF 63

NOTES NIESE

DATE 2/26/21

ROUTE US 20A

H.C. RHOADES

WEATHER CLOUDY

COUNTY FULTON

R.C. _____

TEMP. 31°

TOWNSHIP GERMAN

SECTION 7

DWG BY NIESE

PID PAVETRAIN

T 7 N R 5 E

TYPE MONUMENT MAG/WASHER

ON SURFACE - ~~BELOW~~ ON

OFFSET ☉ PAVEMENT 1.7' ~~LT~~ : RT

9.2' TO RT EDGE PAVEMENT

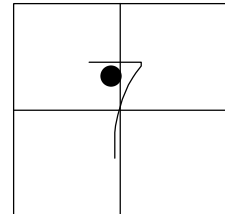
STATION: 132+72

HORIZ.DATUM: NAD83 2011

GEOID: NAVD88 2012A

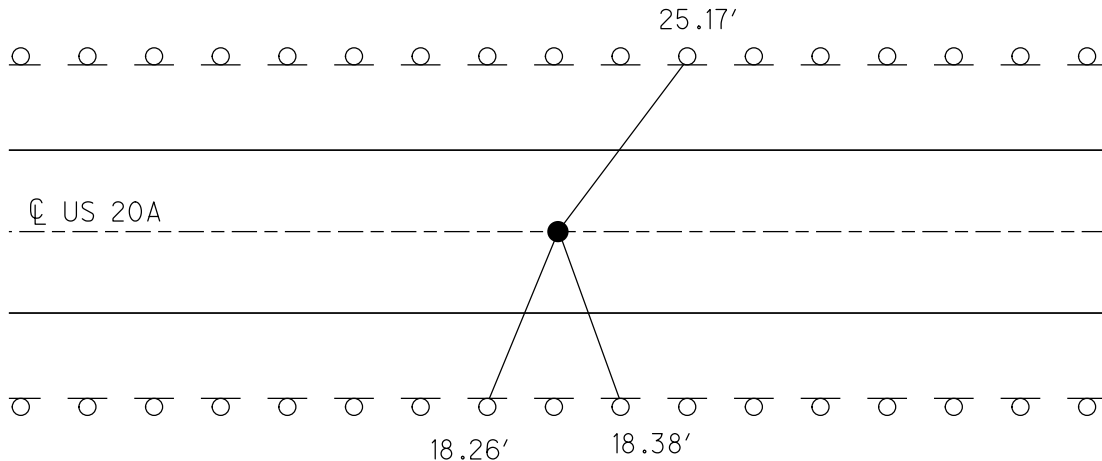
GRID: NORTHING: 702670.729

EASTING: 1466709.324



RECORD: P.T.
 STA. 132+45.53
 FD P.K./WASHER
 7/12/04, MB
 SET MAG/WASHER
 8/24/04, MB
 FD MAG/WASHER
 REFBB6
 9/24/20, JFO
 2/26/21, JMR
 SET MAG/WASHER
 REFBB6
 11/8/21, JFO

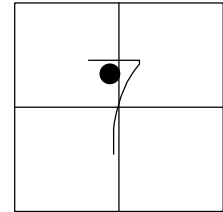
SET NOTCHES
 GR POSTS



O.D.O.T. DISTRICT 2 SURVEY OFFICE (USE ONLY)

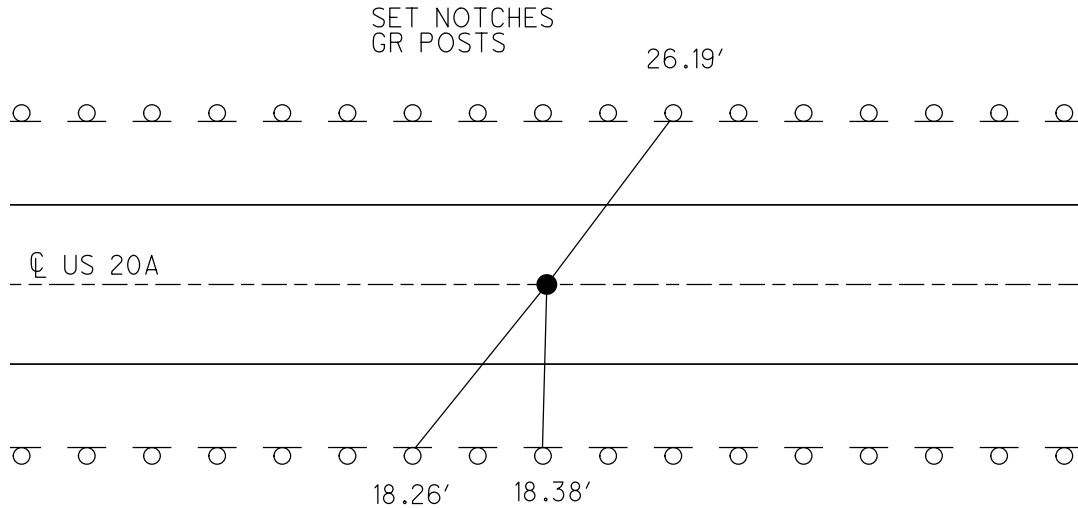
PERSONNEL _____ REFERENCE NO. 6 BB SHEET 12 OF 63
 NOTES NIESE DATE 2/26/21 ROUTE US 20A
 H.C. RHOADES WEATHER CLOUDY COUNTY FULTON
 R.C. _____ TEMP. 31° TOWNSHIP GERMAN
 DWG BY NIESE PID PAVETRAIN SECTION 7
 T 7 N R 5 E

TYPE MONUMENT MAG/WASHER
 ON SURFACE - ~~BELOW~~ ON
 OFFSET ☉ PAVEMENT 1.7' ~~ET~~ : RT
9.2' TO RT EDGE PAVEMENT
 STATION: 132+72



HORIZ.DATUM: NAD83 2011 GEOID: NAVD88 2012A
 GRID: NORTHING: 702670.598 EASTING: 1466709.264

RECORD: P.T.
 STA. 132+45.53
 FD P.K./WASHER
 7/12/04, MB
 SET MAG/WASHER
 8/24/04, MB
 FD MAG/WASHER
 REFBB6
 9/24/20, JFO
 2/26/21, JMR



O.D.O.T. DISTRICT 2 SURVEY OFFICE (USE ONLY)

PERSONNEL

REFERENCE NO. 6 BB

SHEET 12 OF 63

NOTES RHOADES

DATE 9/24/20

ROUTE US 20A

H.C. O'DONNELL

WEATHER SUNNY

COUNTY FULTON

R.C. AUBLE

TEMP. 56°

TOWNSHIP GERMAN

SECTION 7

DWG BY RHOADES

PID PAVETRAIN

T 7 N R 5 E

TYPE MONUMENT MAG/WASHER

ON SURFACE - ~~BELOW~~ ON

OFFSET CL PAVEMENT 1.7' LT : RT

9.2' TO RT EDGE PAVEMENT

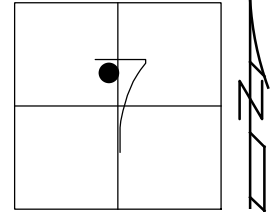
STATION: 132+72

HORZ. DATUM: NAD83 2011

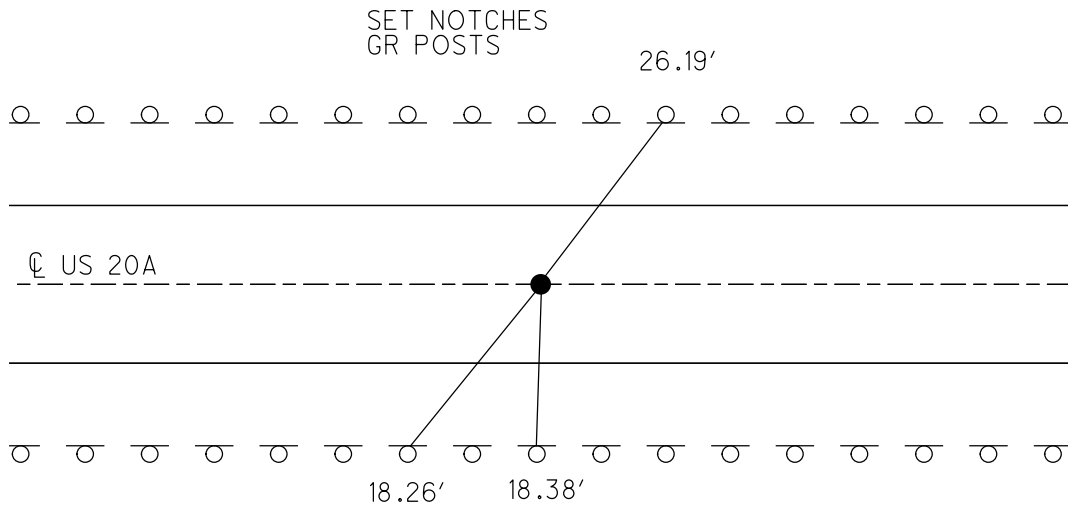
GEOID: NAVD88 2012A

GRID: NORTHING: 702670.598

EASTING: 1466709.264



RECORD: P.T.
 STA. 132+45.53
 FD P.K./WASHER
 7/12/04, MB
 SET MAG/WASHER
 8/24/04, MB
 FD MAG/WASHER
 REFBB6
 9/24/20, JFO



O.D.O.T. DISTRICT 2 SURVEY OFFICE

PERSONNEL _____

REFERENCE NO. 6-BB

SHEET 10 OF 15

NOTES HUSS

DATE 7-12-04

ROUTE U.S. -20A

H.C. BARNHISEL

WEATHER FAIR

COUNTY FULTON

R.C. ADKINS

TEMP. 80°

TOWNSHIP GERMAN

SECTION 7

T 7 N R 5 E

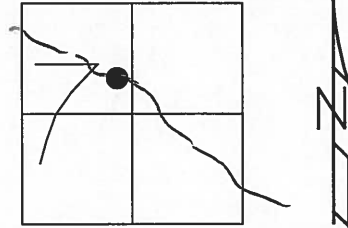
TYPE MONUMENT P.K. WASHER

ON SURFACE ~~BELOW~~ ON _____

~~LEFT~~ Q ~~PAV'T~~ - RIGHT 1.7' RT

9.2 TO RT. EDGE PAVEMENT

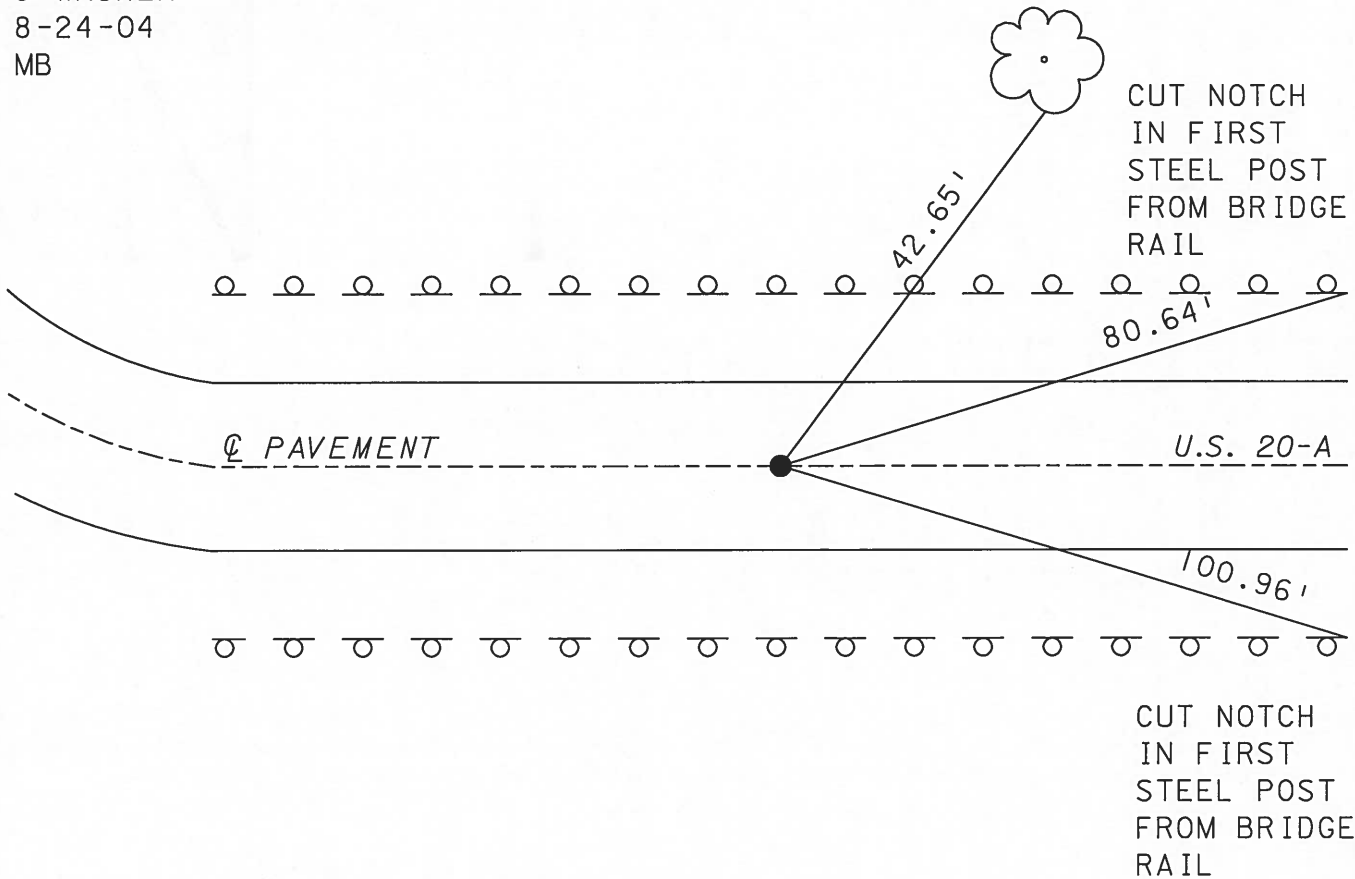
S.L.M. 132+72



REC. P.T. STA 132+45.53

SET MAG NAIL
& WASHER
8-24-04
MB

SET N&S
SYCAMORE TREE
6' UP



O.D.O.T. DISTRICT 2 SURVEY OFFICE

PERSONNEL

REFERENCE NO. 6-BB

SHEET 9 OF

NOTES LOEHRKE

H.C. CANTERBURY

R.C. HERMILLER

VOGEL

DATE 5-18-94

WEATHER Nice

TEMP. +60

ROUTE U.S. 20-A

COUNTY Fulton

TOWNSHIP German

SECTION 7

T 7 N R 5 E

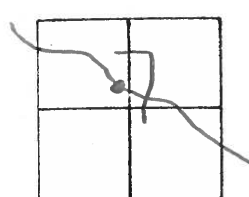
TYPE MONUMENT P.K. / WASHER ^{RESET} 7-29-94

ON SURFACE - BELOW YES

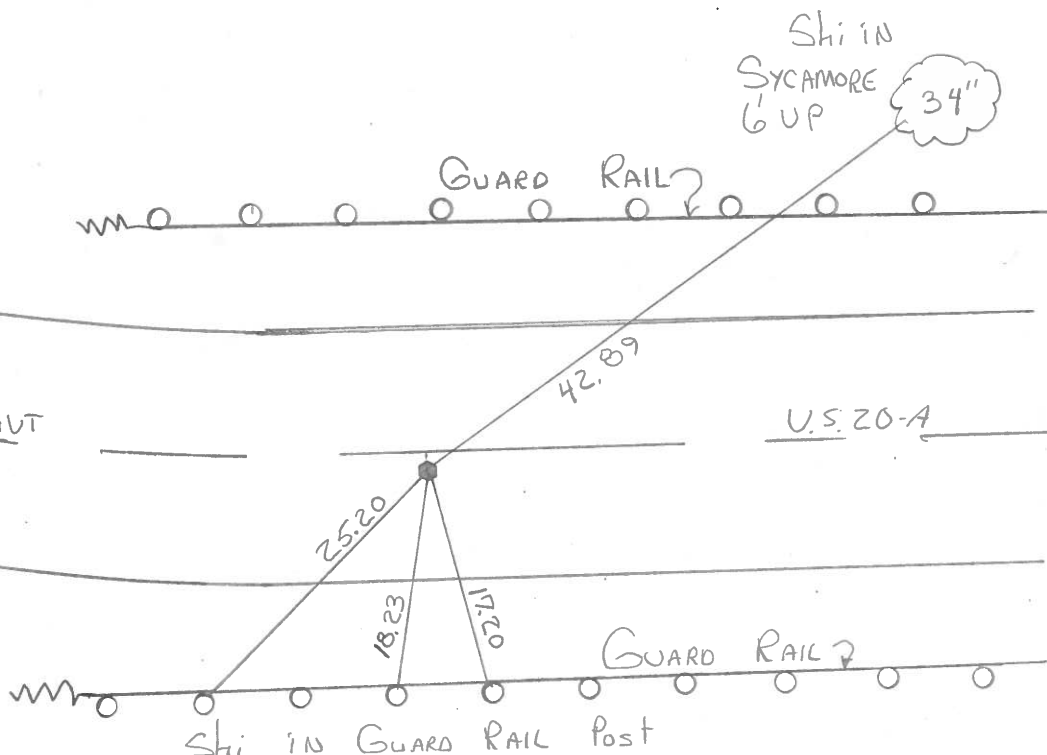
~~LEFT~~ - C PAV'T. - RIGHT 1.8' Rt

7.9 TO Rt EDGE PAVEMENT

S.L.M. 132+72



REC. P.T. Sta 132+45.53



County Fuller S.R. US#204

Date 3 March 83

Township German

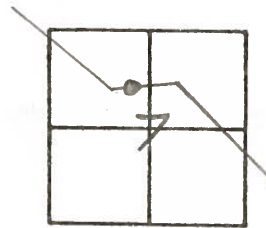
Weather Fair

Section 7

Temp. 60°

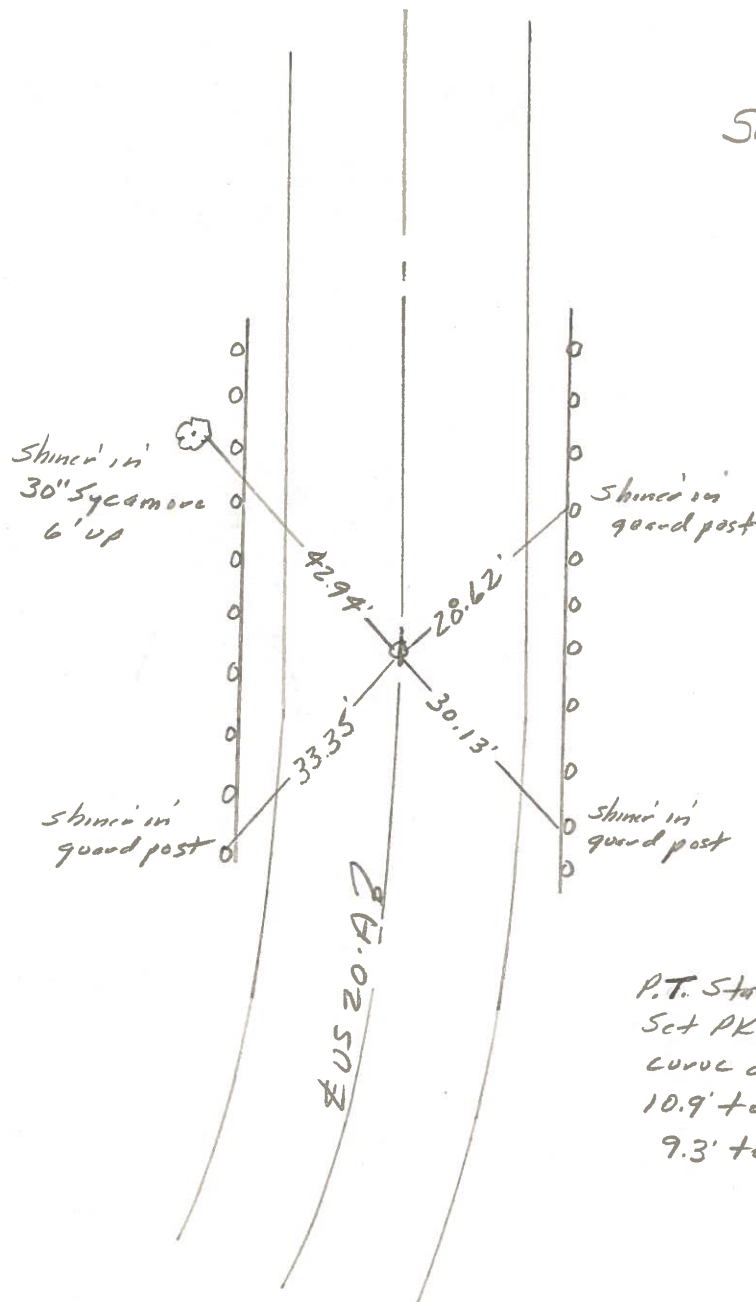
T_N, R_E

Personnel 1. Stone Notes
D. Curtis H.C.
R. Michalak R.C.
P. Neuser



REF. NO. 6-88

SET PK./WASHER
8-9-83 S.W.H.



P.T. Sta. 132+45.53
 Set PK Nail as per
 curve data
 10.9' to N. edge put
 9.3' to S. edge put.