

O.D.O.T. DISTRICT 2 SURVEY OFFICE (USE ONLY)

PERSONNEL

REFERENCE NO. 6 C

SHEET 14 OF 63

NOTES RHOADES

DATE 9/24/20

ROUTE US 20A

H.C. O'DONNELL

WEATHER SUNNY

COUNTY FULTON

R.C. AUBLE

TEMP. 56°

TOWNSHIP GERMAN

DWG BY RHOADES PID PAVETRAIN

SECTION 7

T 7 N R 5 E

TYPE MONUMENT 1" IPIPE

~~ON SURFACE~~ - BELOW 1"

OFFSET CL PAVEMENT - LT : RT

68.1' TO LT EDGE PAVEMENT

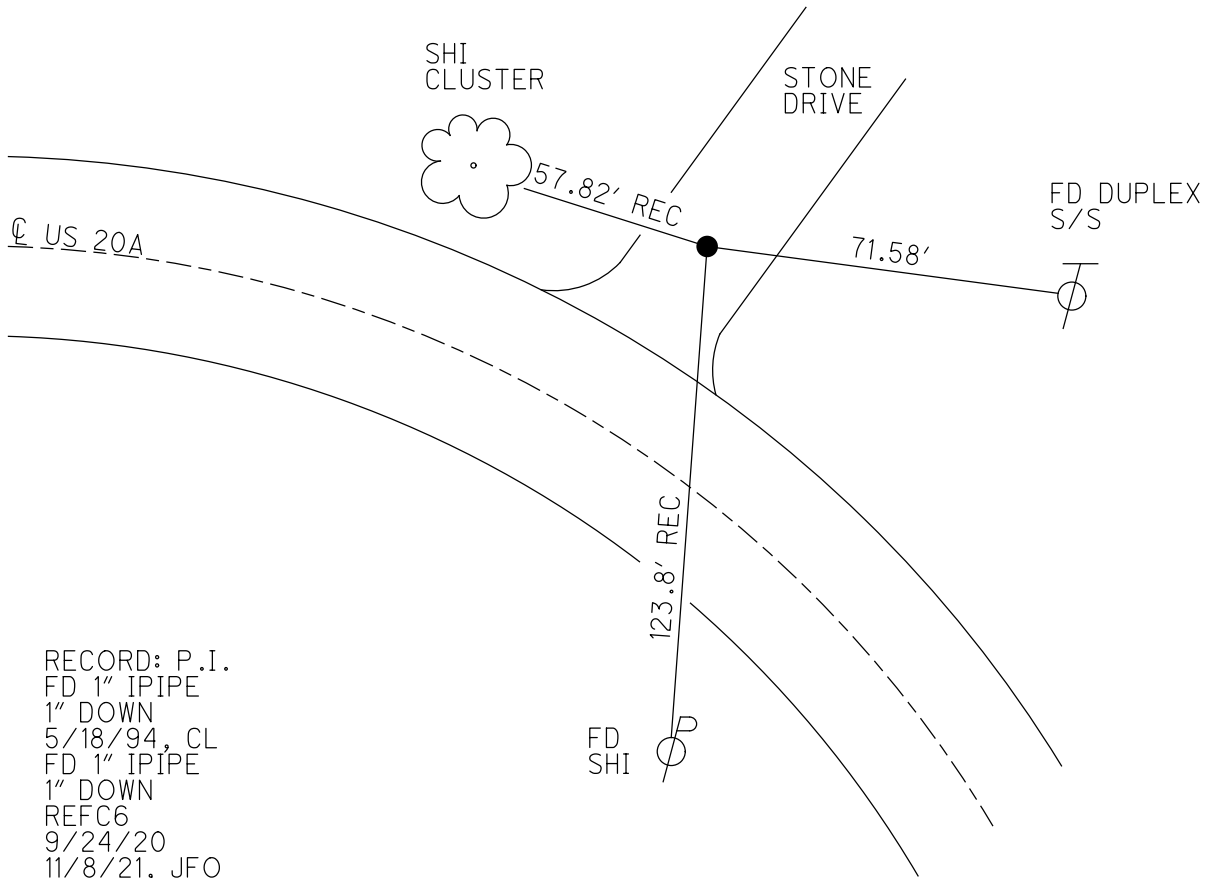
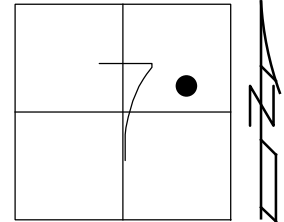
STATION: 141+66

HORZ. DATUM: NAD83 2011

GEOID: NAVD88 2012A

GRID: NORTHING: 702655.909

EASTING: 1467608.395



RECORD: P.I.
FD 1" IPIPE
1" DOWN
5/18/94, CL
FD 1" IPIPE
1" DOWN
REFC6
9/24/20
11/8/21, JFO

O.D.O.T. DISTRICT 2 SURVEY OFFICE (USE ONLY)

PERSONNEL _____ REFERENCE NO. 6 C SHEET 14 OF 63
 NOTES RHOADES DATE 9/24/20 ROUTE US 20A
 H.C. O'DONNELL WEATHER SUNNY COUNTY FULTON
 R.C. AUBLE TEMP. 56° TOWNSHIP GERMAN
 DWG BY RHOADES PID PAVETRAIN SECTION 7
 T 7 N R 5 E

TYPE MONUMENT 1" IPIPE

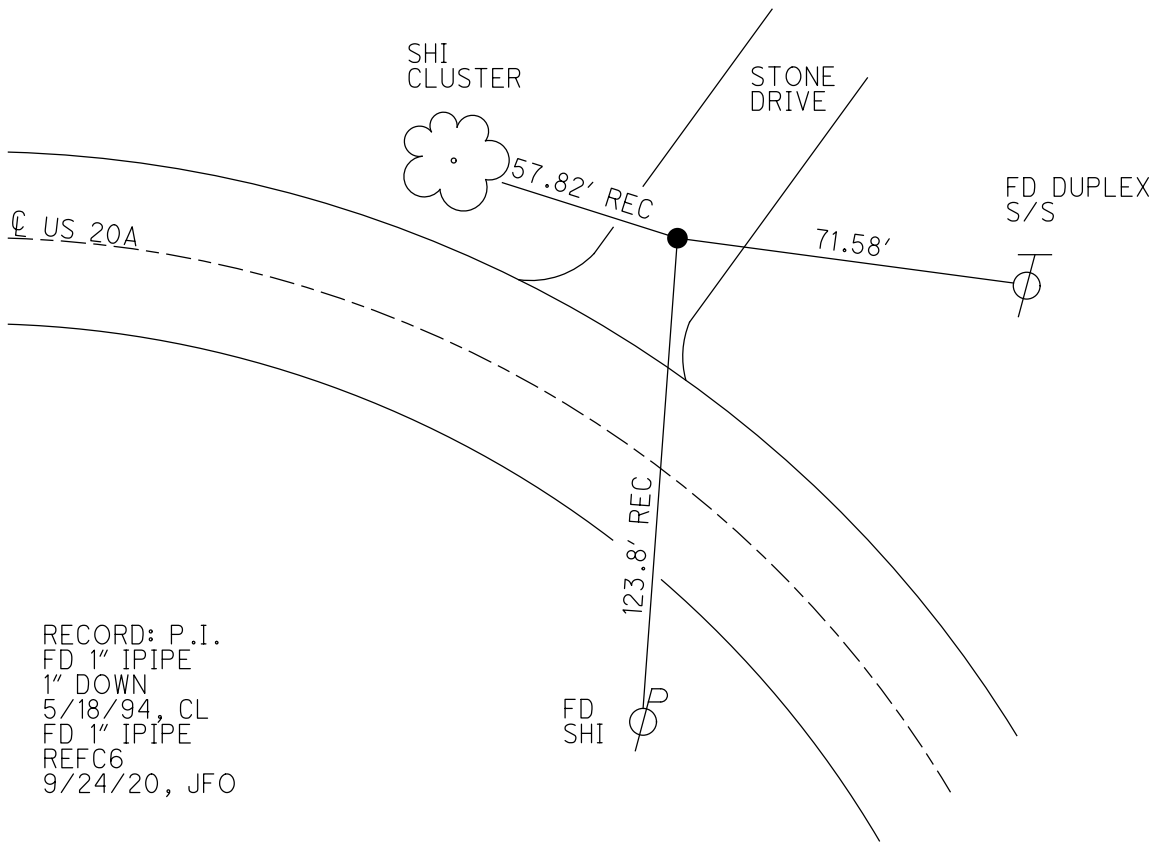
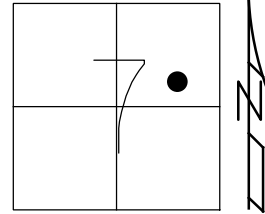
~~ON SURFACE~~ - BELOW 1"

OFFSET \odot PAVEMENT - LT : RT
68.1' TO LT EDGE PAVEMENT

STATION: 141+66

HORZ.DATUM: NAD83 2011 GEOID: NAVD88 2012A

GRID: NORTHING: 702655.920 EASTING: 1467608.373



RECORD: P.I.
 FD 1" IPIPE
 1" DOWN
 5/18/94, CL
 FD 1" IPIPE
 REFC6
 9/24/20, JFO

O.D.O.T. DISTRICT 2 SURVEY OFFICE

PERSONNEL

REFERENCE NO. 6-C

SHEET 12 OF 15

NOTES LOEHRKE

DATE 5-18-94

ROUTE S.R. U.S.-20A

H.C. CANTERBURY

WEATHER NICE

COUNTY FULTON

R.C. HERMILLER

TEMP. +60°

TOWNSHIP GERMAN

VOGEL

SECTION 7

T 7 N R 5 E

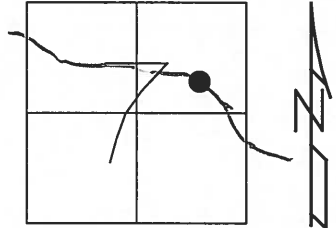
TYPE MONUMENT 1" IRON PIPE - IN STONE DRIVE

~~ON SURFACE~~ - BELOW 1" BELOW STONES

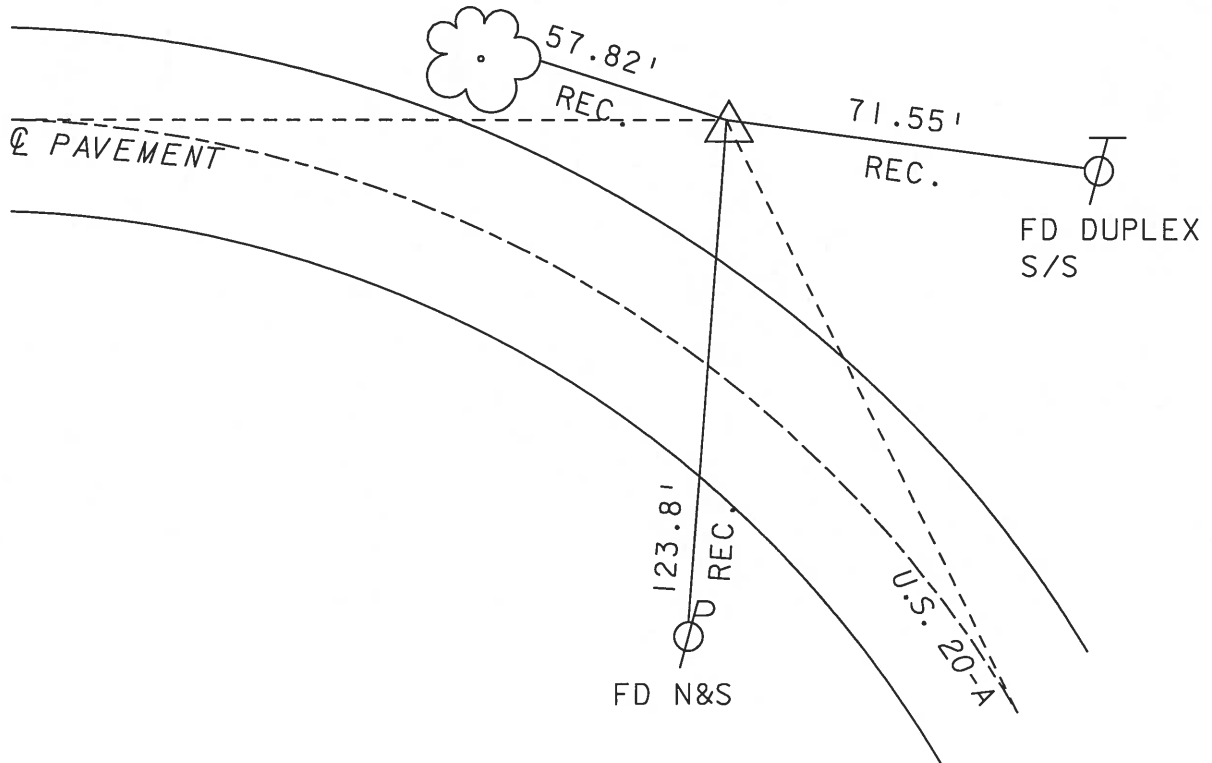
~~LEFT~~ CL PAV'T - ~~RIGHT~~ 78.7' LEFT of CL

68.1 TO LT. EDGE PAVEMENT

S.L.M. 141+66



FD N&S
IN CLUSTER
OF TREES



O.D.O.T. DISTRICT 2 SURVEY OFFICE

PERSONNEL

REFERENCE NO. 6-C SHEET 11 OF

NOTES LOEHAKE

H.C. CANTERBURY

R.C. HERMILLER

VOGEL

DATE 5-18-94

WEATHER Nice

TEMP. +60

ROUTE S.R. US 20-A

COUNTY Fulton

TOWNSHIP German

SECTION 7

T R

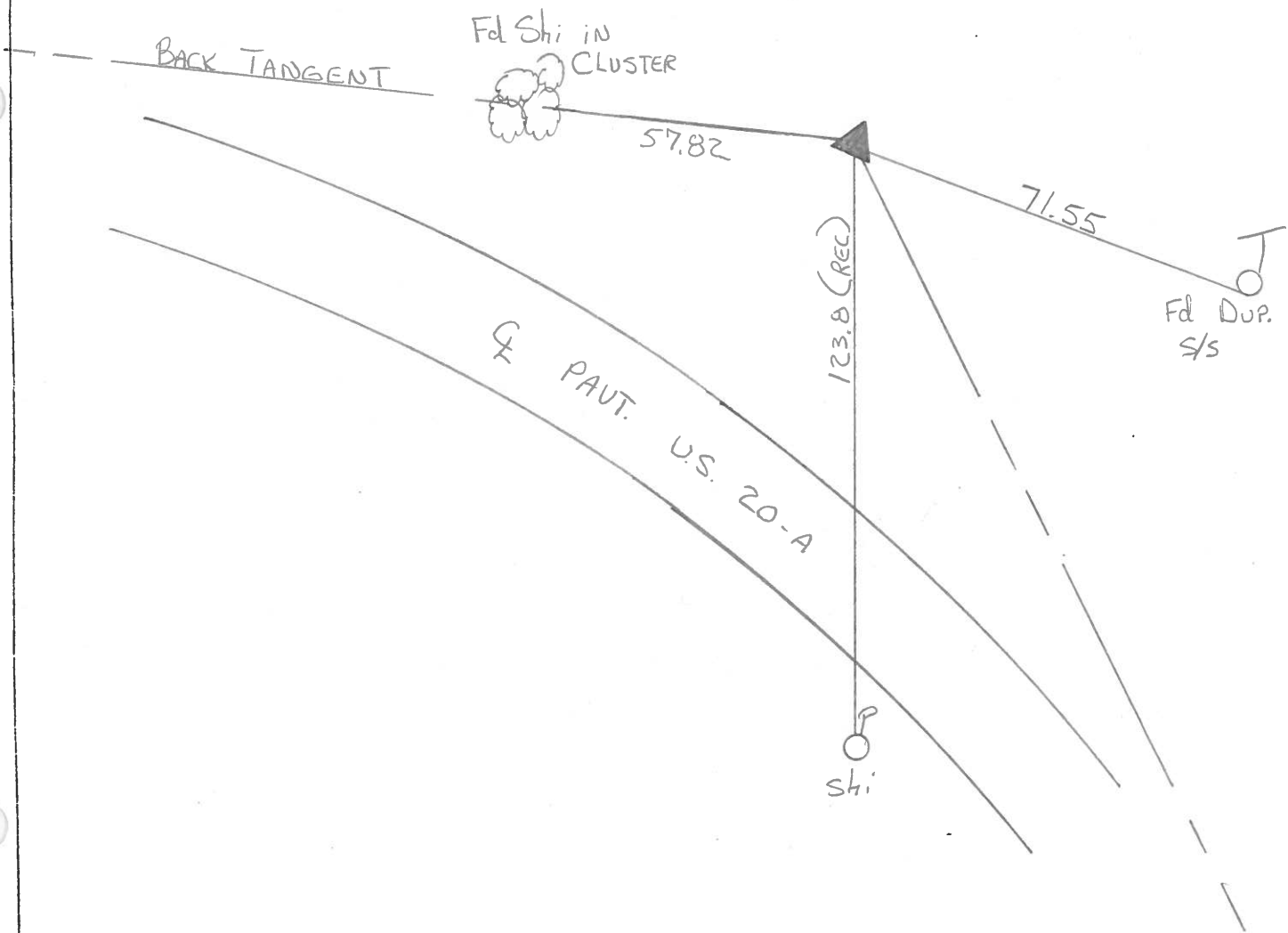
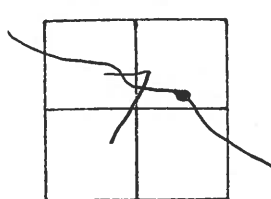
TYPE MONUMENT 1" IRON PIPE - IN STONE DRIVE

ON SURFACE - BELOW 1" Below Stones

LEFT- & PAV'T. - RIGHT 78.7' Lt

68.1 TO Lt EDGE PAVEMENT

S.L.M. 141+66



County Fulton S.R. 05#20A

Date 3 March 83

Township German

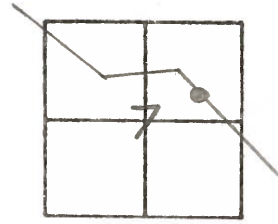
Weather Fair

Section 7

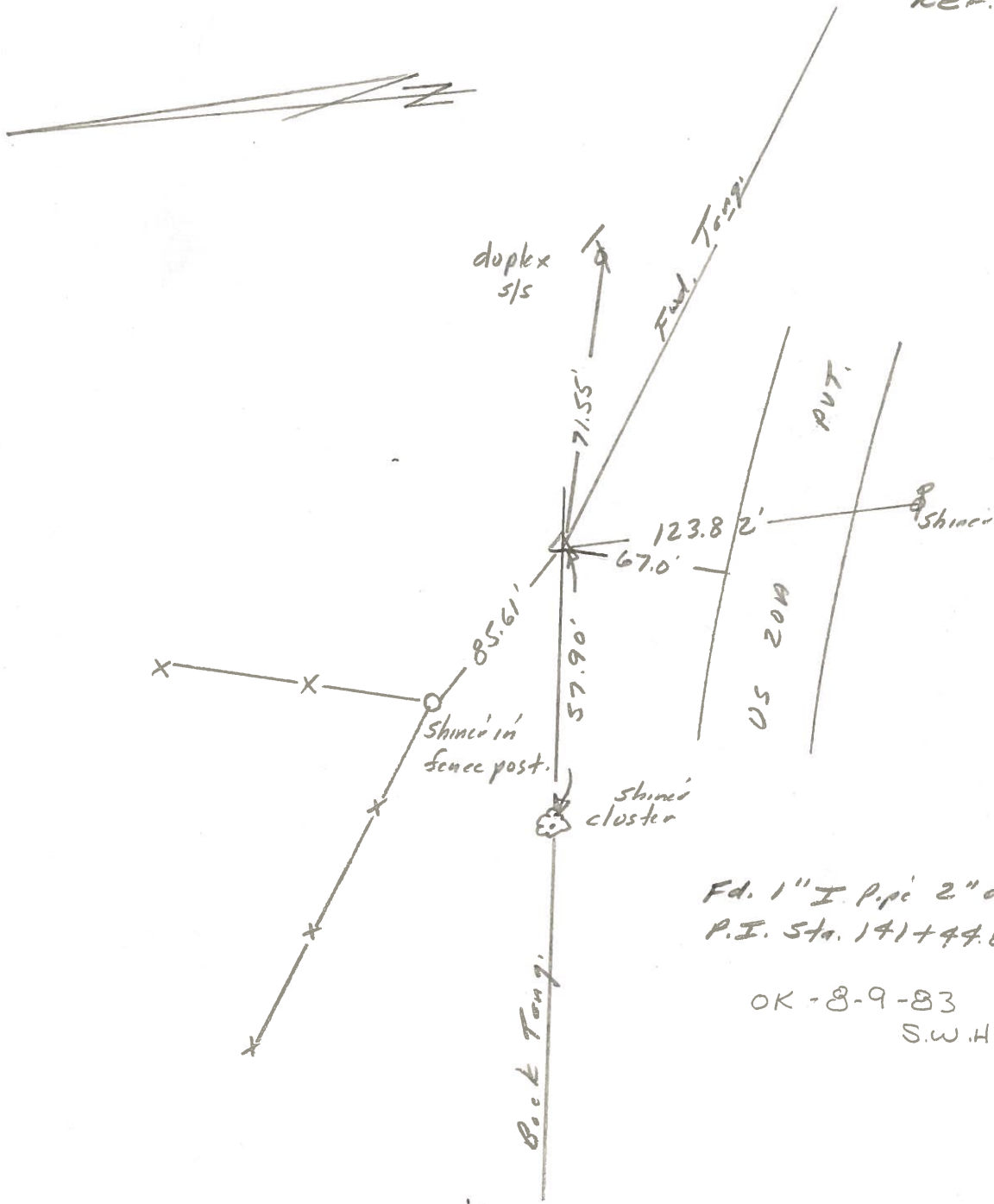
Temp. 60°

T_N, R_E

Personnel I. Stone Notes
D. Curtis H.C.
R. Michalak R.C.
P. Neuser



REF. NO. 6-C



Fd. 1" I Pipe 2" deep
P.I. Sta. 141+44.85

OK - 8-9-83
S.W.H.

County FULTON S.R. US-20A

Date JAN 27, 1983

Township GERMAN

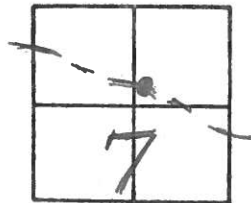
Weather OVERCAST

Section 7

Temp. +28°

T7N, R5E

Personnel HOFFMAN



#6-C

CREW

SLM 141+58

Fd: 1" pipe at SURFACE

79.7 Lt of Q PAVT US-20A

SET SHI
S/S Corner
Post

85.64'

71.55'

Fd:
Dup
S/S

124.2'

Q PAVT

US-20A

Fd Dup
E/S

RECORD:

1934 PLAN P.I. Sta. 141+78.02

Δ - 39°22' Rt

D - 4°30'