

O.D.O.T. DISTRICT 2 SURVEY OFFICE (USE ONLY)

PERSONNEL

REFERENCE NO. 7

SHEET 16 OF 63

NOTES LEU

DATE 8/25/17

ROUTE US 20A

H.C. LEU

WEATHER CLEAR

COUNTY FULTON

R.C. HOMAN

TEMP. 61°

TOWNSHIP GERMAN

SECTION 8

DWG BY NIESE PID 92126

T 7 N R 5 E

TYPE MONUMENT MAG/WASHER

ON SURFACE - ~~BELOW~~ ON

OFFSET Q PAVEMENT ON LT : RT
- TO - EDGE PAVEMENT

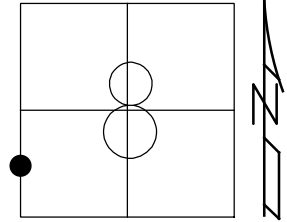
STATION: 158+24

HORZ.DATUM: NAD83(2011)

GEOID: 2012A

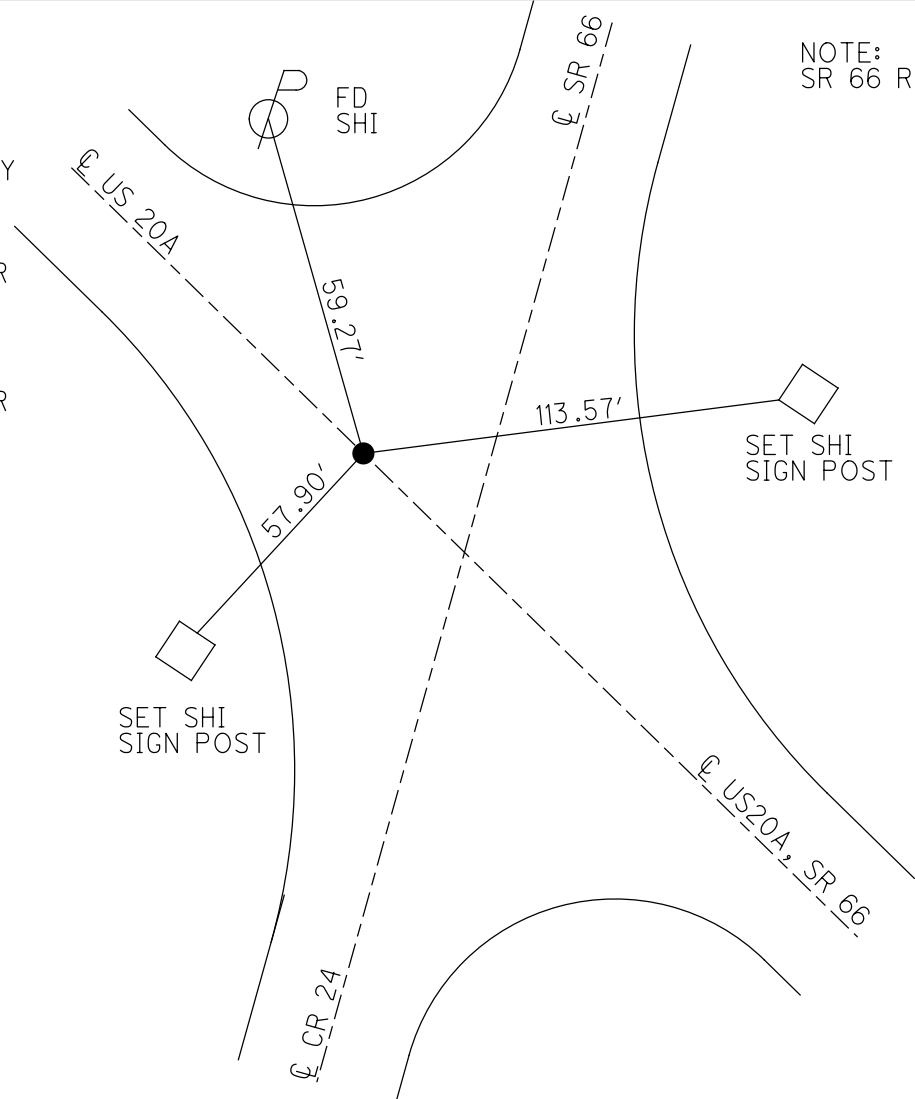
GRID: NORTHING: 701558.963

EASTING: 1468901.574



RECORD:
 SET P.K.NAIL
 9/9/73, BENCH
 FD P.K.NAIL
 4/9/92, STANLEY
 FD P.K./WASHER
 1 1/2" DOWN
 7/12/04, MB
 SET MAG/WASHER
 8/24/04, MB
 FD MAG/WASHER
 REF7
 8/21/17, JLL
 SET MAG/WASHER
 NEWREF7
 10/15/19, JFO
 FD MAG/WASHER
 CKREF7
 9/16/20, JFO

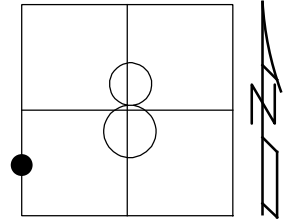
NOTE:
 SR 66 REF102



O.D.O.T. DISTRICT 2 SURVEY OFFICE (USE ONLY)

PERSONNEL	REFERENCE NO. <u>7</u>	SHEET <u>16</u> OF <u>62</u>
NOTES <u>LEU</u>	DATE <u>8/25/17</u>	ROUTE <u>US 20A</u>
H.C. <u>LEU</u>	WEATHER <u>CLEAR</u>	COUNTY <u>FULTON</u>
R.C. <u>HOMAN</u>	TEMP. <u>61°</u>	TOWNSHIP <u>GERMAN</u>
		SECTION <u>8</u>
DWG BY <u>NIESE</u>	PID <u>92126</u>	T <u>7</u> N R <u>5</u> E

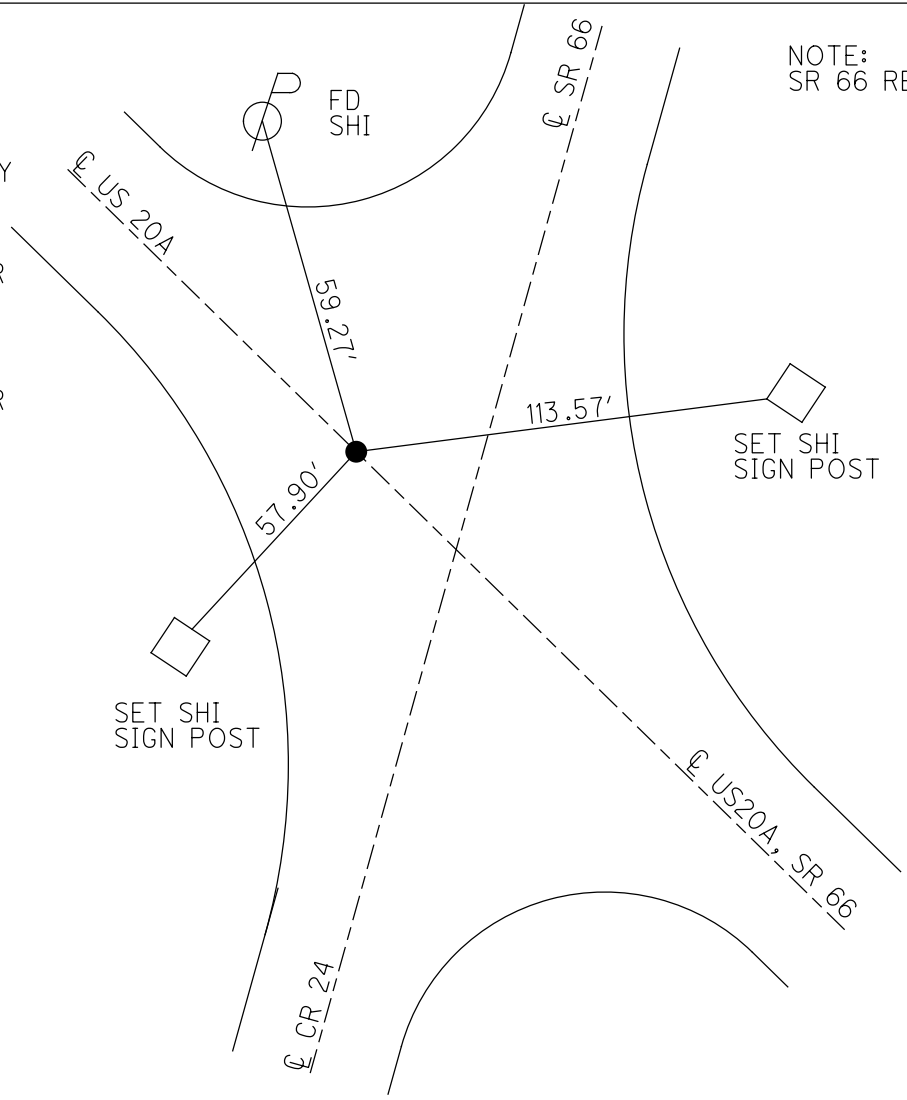
TYPE MONUMENT MAG/WASHER
 ON SURFACE - ~~BELOW~~ ON
 OFFSET ☉ PAVEMENT ON LT : RT
- TO - EDGE PAVEMENT



STATION: 158+24
 HORZ.DATUM: NAD83(2011) GEOID: 2012A
 GRID: NORTHING: 701422.867 EASTING: 1468914.656

RECORD:
 SET P.K.NAIL
 9/9/73, BENCH
 FD P.K.NAIL
 4/9/92, STANLEY
 FD P.K./WASHER
 1 1/2" DOWN
 7/12/04, MB
 SET MAG/WASHER
 8/24/04, MB
 FD MAG/WASHER
 REF7
 8/21/17, JLL
 SET MAG/WASHER
 NEWREF7
 10/15/19, JFO

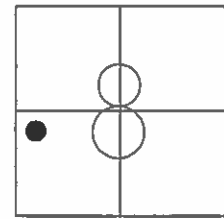
NOTE:
 SR 66 REF102



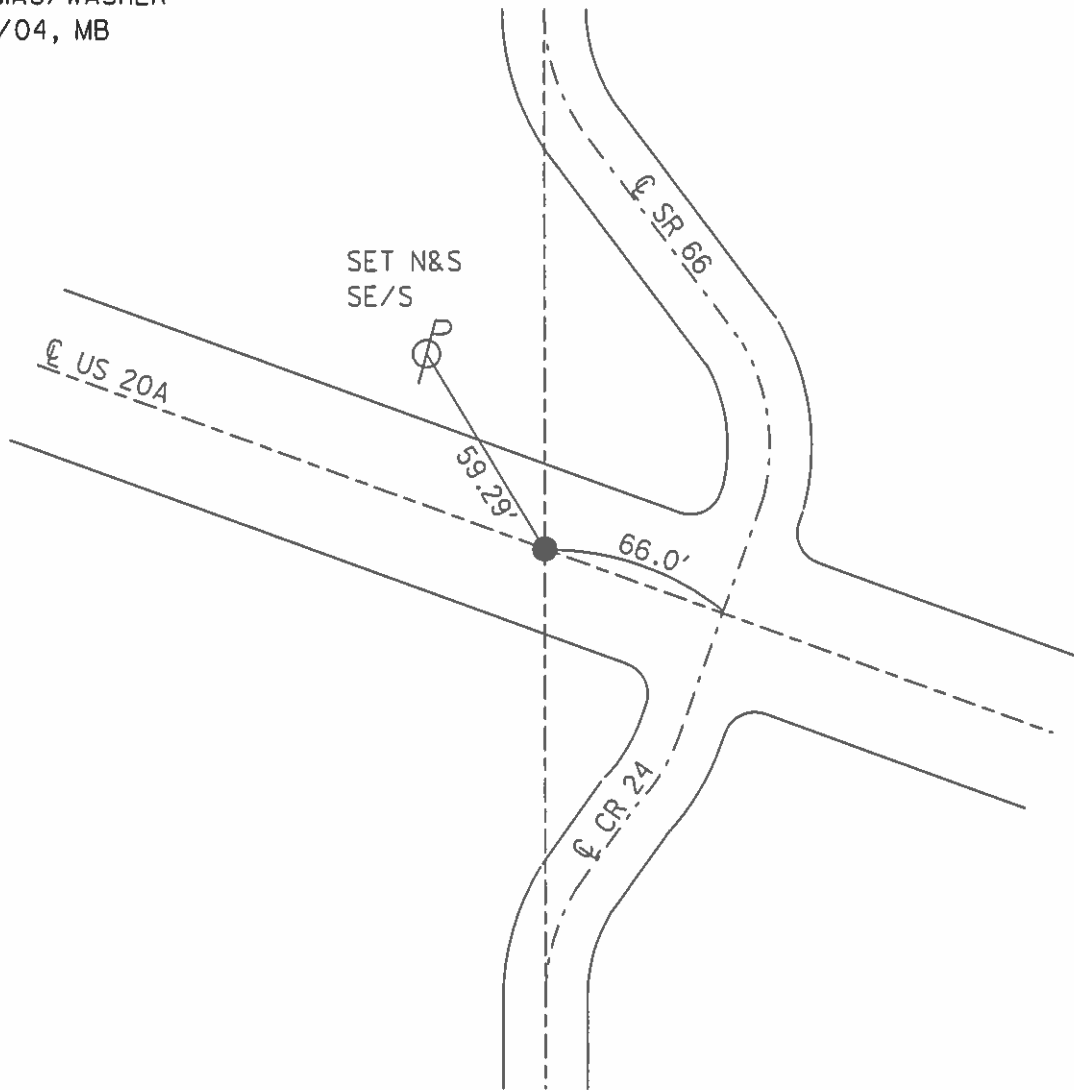
O.D.O.T. DISTRICT 2 SURVEY OFFICE (USE ONLY)

PERSONNEL _____ REFERENCE NO. 7 SHEET 16 OF 61
NOTES HUSS DATE 7/12/04 ROUTE US 20A
H.C. BARNHISEL WEATHER FAIR COUNTY FULTON
R.C. ADKINS TEMP. 80° TOWNSHIP GERMAN
SECTION 8
T 7 N R 5 E

TYPE MONUMENT P.K./WASHER
~~ON SURFACE~~ - BELOW 1 1/2"
LEFT-C PAV'T-RIGHT ON
- TO - EDGE PAVEMENT
S.L.M. 158+24
GRID: NORTHING: _____ EASTING: _____



SET MAG/WASHER
8/24/04, MB



O.D.O.T. DISTRICT 2 SURVEY OFFICE

PERSONNEL

REFERENCE NO. 7

SHEET 14 OF 15

NOTES HUSS

DATE 7-12-04

ROUTE U.S. 20-A

H.C. BARNHISEL

WEATHER FAIR

COUNTY FULTON

R.C. ADKINS

TEMP. 80°

TOWNSHIP GERMAN

SECTION 8

T 7 N R 5 E

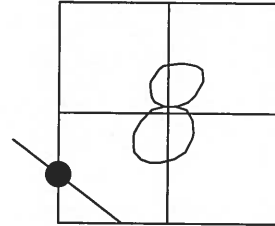
TYPE MONUMENT P.K./WASHER

~~ON SURFACE~~ - BELOW 1 1/2"

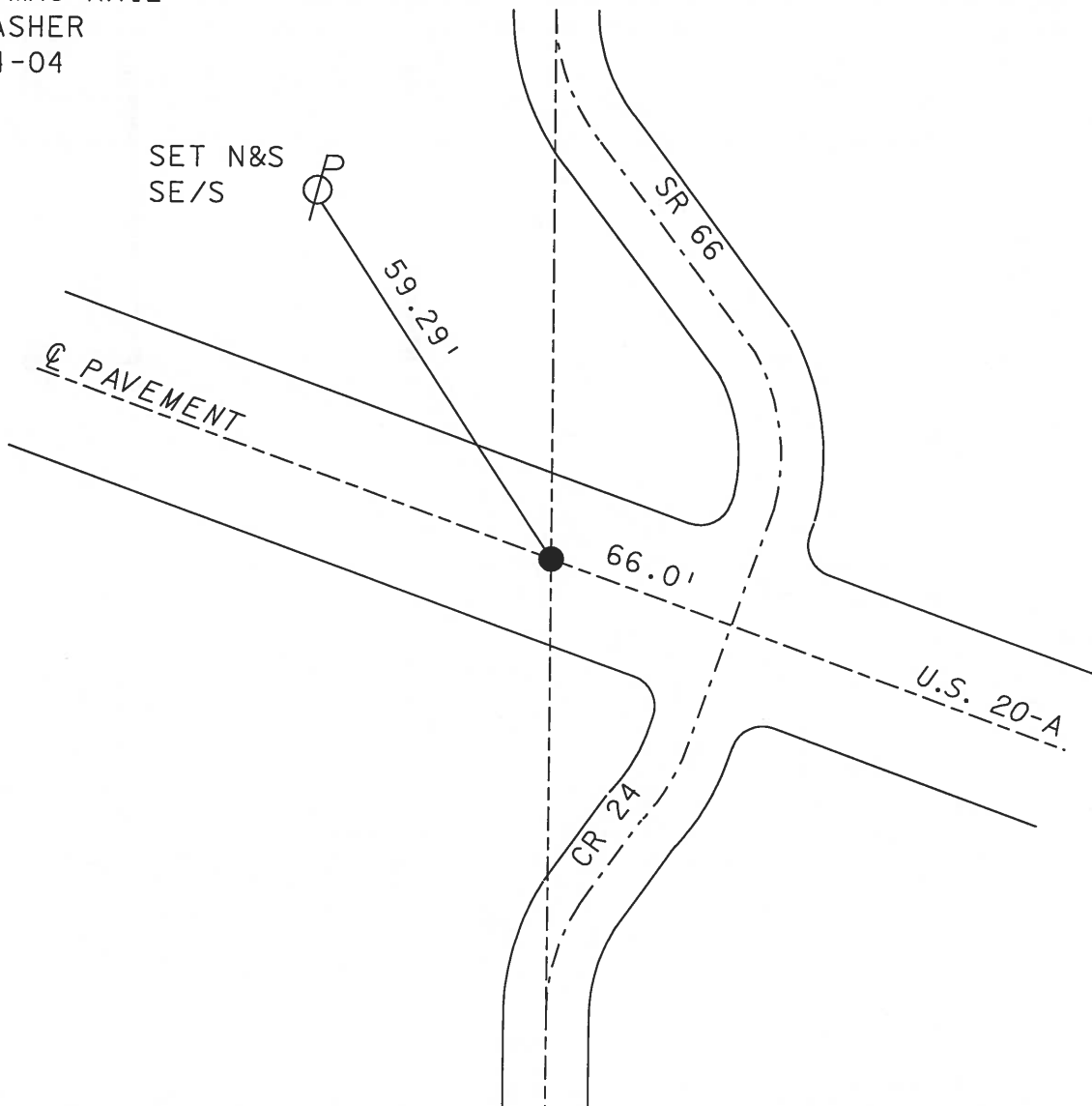
~~LEFT-℄ PAV'T-RIGHT~~ ON

TO EDGE PAVEMENT

S.L.M. 158+24



SET MAG NAIL
& WASHER
8-24-04
MB



O.D.O.T. DISTRICT 2 SURVEY OFFICE

PERSONNEL

REFERENCE NO. 7

SHEET 13 OF

NOTES LOEHRKE

H.C. CANTERBURY

R.C. HERMILLER

Vogel

DATE 5-18-94

WEATHER Nice

TEMP. +60

ROUTE U.S. 20-A

COUNTY Fulton

TOWNSHIP German

SECTION 8

T. 7 N. R. 5 E

Reset 7-29-94

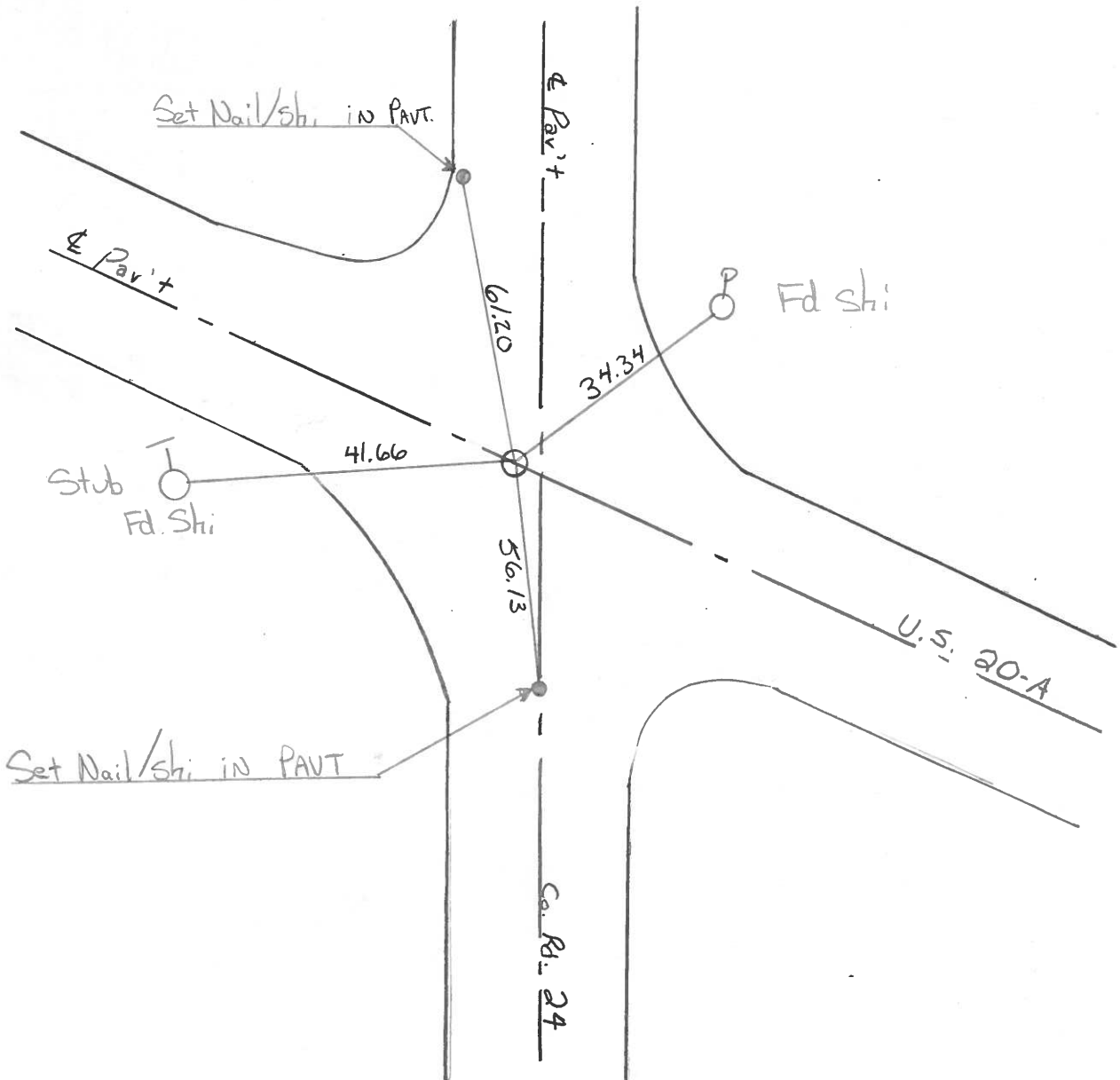
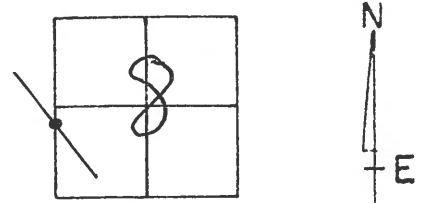
TYPE MONUMENT P.K. / WASHER

ON SURFACE - BELOW: Yes

LEFT- & PAV'T. - RIGHT ON & S.R. 20-A

TO EDGE PAVEMENT

S.L.M. 158+35



County FULTON S.R. US-20A

Date JAN 27, 1983

Township GERMAN

Weather OVERCAST

Section 8

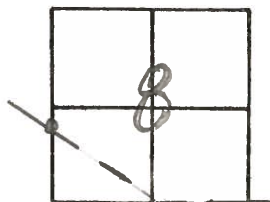
Temp. +28°

T7N, R5E

Personnel HOFFMAN

#7

CREW



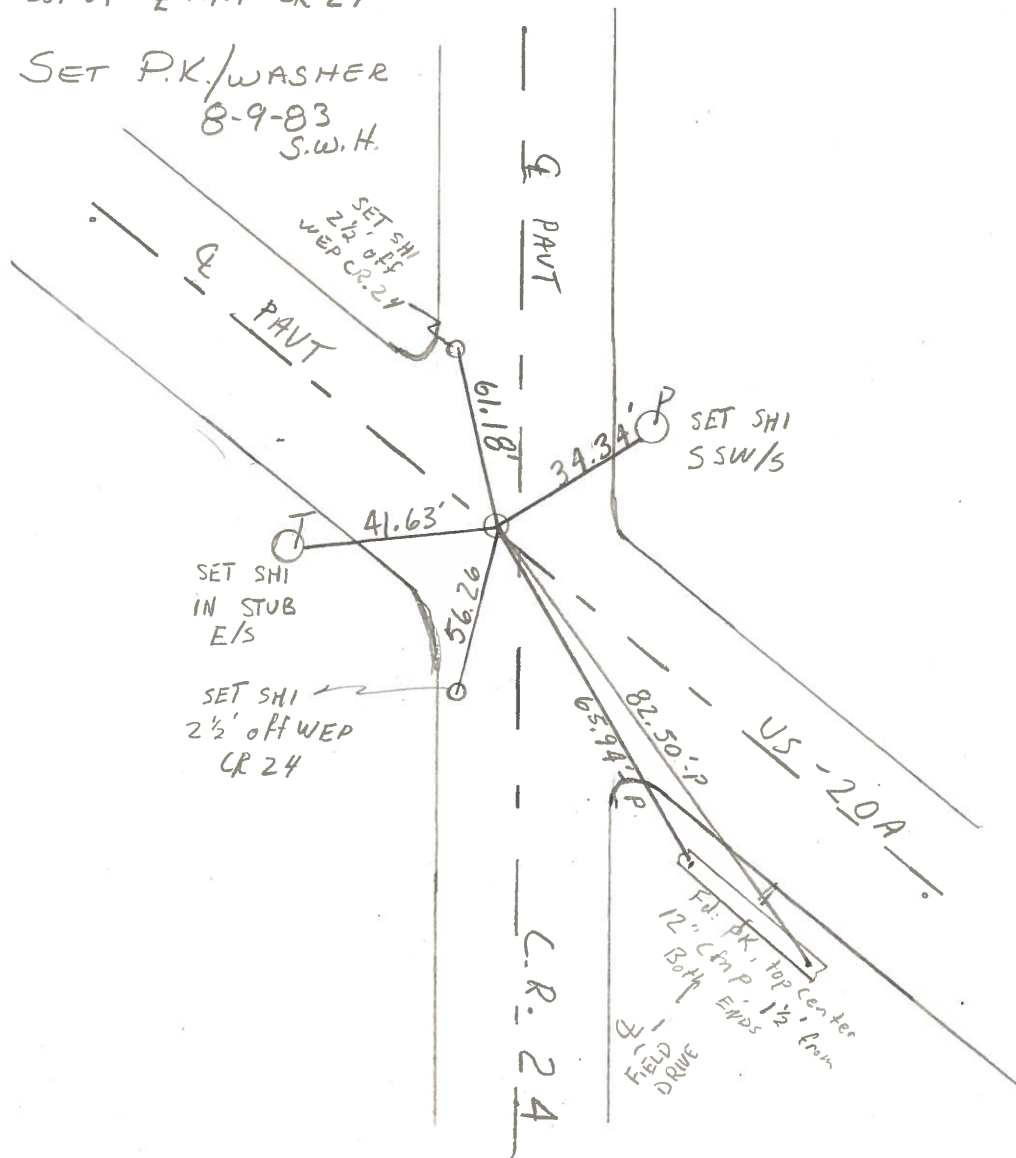
Fd. PK NAIL at SURFACE

SLM 158+38

Q/N 1/4 PAVT US-20A

4.0' West of 1/4 PAVT CR 24

SET P.K./WASHER
8-9-83
S.W.H.



PERSONNEL TITLE PERSONNEL TITLE

Red Beach
Newcomb
Knape

COUNTY Fulton DATE Sept 73

S. R. US 20-A WEATHER _____

SEC. German Twp TEMP. _____

DESCRIPTION CONTROL POINTS JOB NO. _____

