

O.D.O.T. DISTRICT 2 SURVEY OFFICE (USE ONLY)

PERSONNEL	REFERENCE NO. <u>10 A</u>	SHEET <u>22</u> OF <u>62</u>
NOTES <u>LEU</u>	DATE <u>7/12/18</u>	ROUTE <u>US 20A</u>
H.C. <u>LEU</u>	WEATHER <u>SUNNY</u>	COUNTY <u>FULTON</u>
R.C. <u>HAGEMEYER</u>	TEMP. <u>84°</u>	TOWNSHIP <u>GERMAN</u>
		SECTION <u>9</u>
DWG BY <u>NASON</u>	PID <u>101232</u>	T <u>7</u> N R <u>5</u> E

TYPE MONUMENT P.K./WASHER

~~ON SURFACE~~ - BELOW 1"

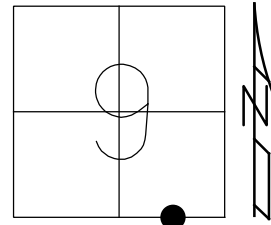
OFFSET  $\odot$  PAVEMENT 0.8" ~~LT~~ : RT

9.8' TO RT EDGE PAVEMENT

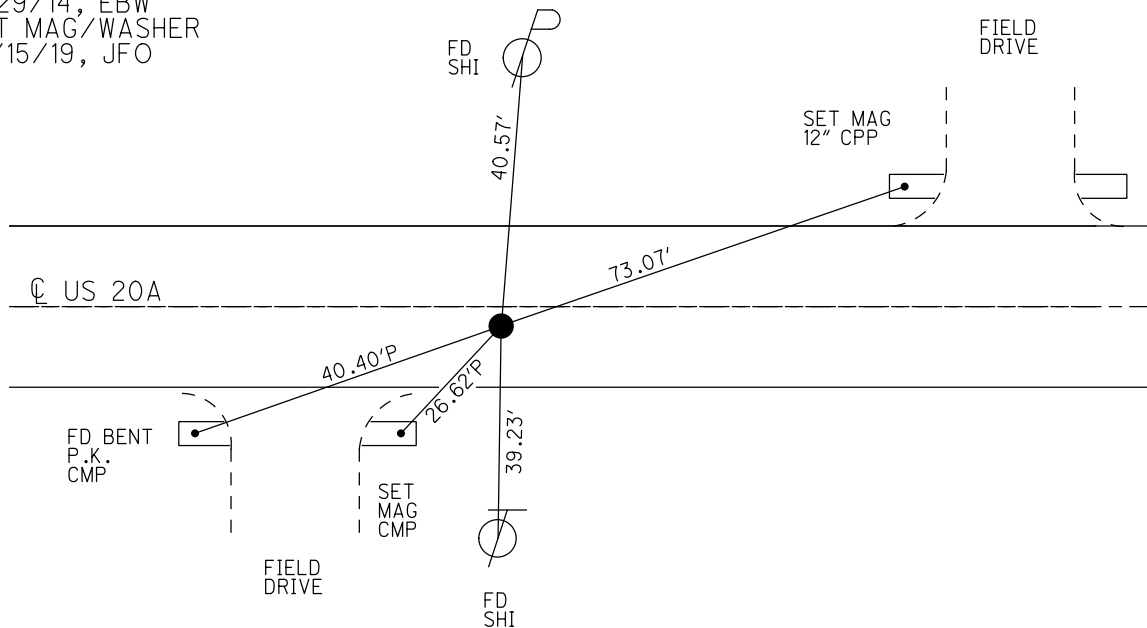
STATION: 257+59.52

HORZ.DATUM: NAD83(2011) GEOID: 2012A

GRID: NORTHING: 699337.938 EASTING: 1478089.202



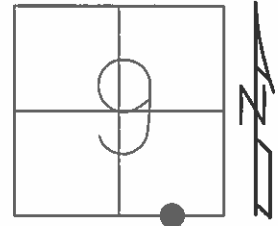
RECORD:  
 FD P.K./WASHER  
 6/6/02, TMR  
 SET MAG/WASHER  
 4/22/03, DCH  
 FD. P.K./WASHER  
 1" DOWN  
 REFA10  
 9/29/14, EBW  
 SET MAG/WASHER  
 10/15/19, JFO



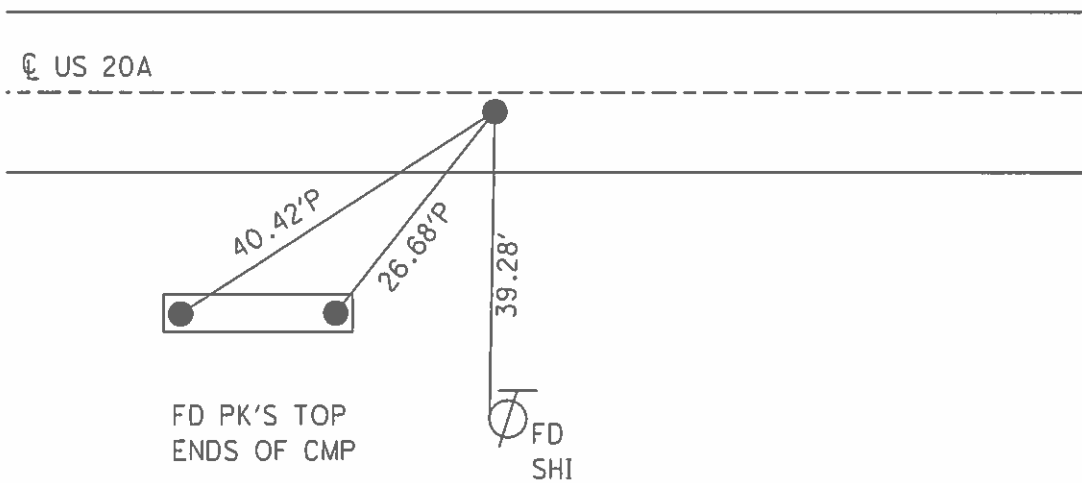
O.D.O.T. DISTRICT 2 SURVEY OFFICE (USE ONLY)

PERSONNEL \_\_\_\_\_ REFERENCE NO. 10 A SHEET 21 OF 61  
 NOTES MICHALAK DATE 6/6/02 ROUTE US 20A  
 H.C. ROUSOS WEATHER RAIN COUNTY FULTON  
 R.C. MALINSKY TEMP. 70° TOWNSHIP GERMAN  
 \_\_\_\_\_ SECTION 9  
 \_\_\_\_\_ T 7 N R 5 E

TYPE MONUMENT P.K./WASHER  
 ON SURFACE - ~~BELOW~~ ON \_\_\_\_\_  
~~LEFT~~ -  $\odot$  PAV'T - RIGHT 0.8'  
9.8' TO RT EDGE PAVEMENT  
 S.L.M. 257+59  
 GRID: NORTHING: \_\_\_\_\_ EASTING: \_\_\_\_\_



SET MAG/WASHER  
 4/22/03, DCH



O.D.O.T. DISTRICT 2 SURVEY OFFICE

PERSONNEL

REFERENCE NO. 10A

SHEET 4 OF 30

NOTES MICHALAK

DATE 6-6-02

ROUTE U.S. 20-A

H.C. ROUSOS

WEATHER RAIN

COUNTY FULTON

R.C. MALINSKY

TEMP. 70°

TOWNSHIP GERMAN

SECTION 9

T 7 N R 5 E

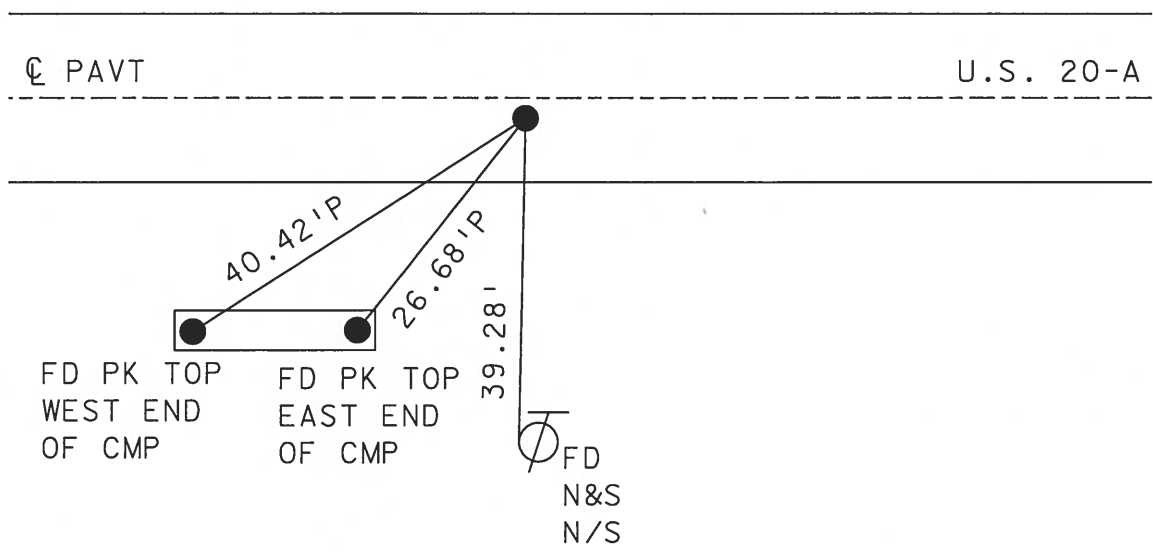
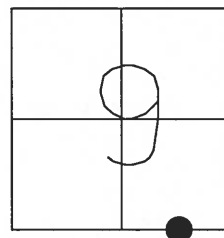
TYPE MONUMENT PK NAIL & WASHER

ON SURFACE - ~~BELOW~~ YES

~~LEFT~~ - Q PAV'T - RIGHT 0.8'

9.8 TO RT EDGE PAVEMENT

S.L.M. 257+59



# O.D.O.T. DISTRICT 2 SURVEY OFFICE

PERSONNEL \_\_\_\_\_

REFERENCE NO. 10-A

SHEET 4 OF 26

NOTES HOFFMAN

H.C. LOHRKE

R.C. \_\_\_\_\_

DATE 8-8-89

WEATHER CLEAR

TEMP. 80°

ROUTE US 20-A

COUNTY FULTON

TOWNSHIP GERMAN

SECTION 9

T 7 N R 5 E

TYPE MONUMENT P.K. NAIL

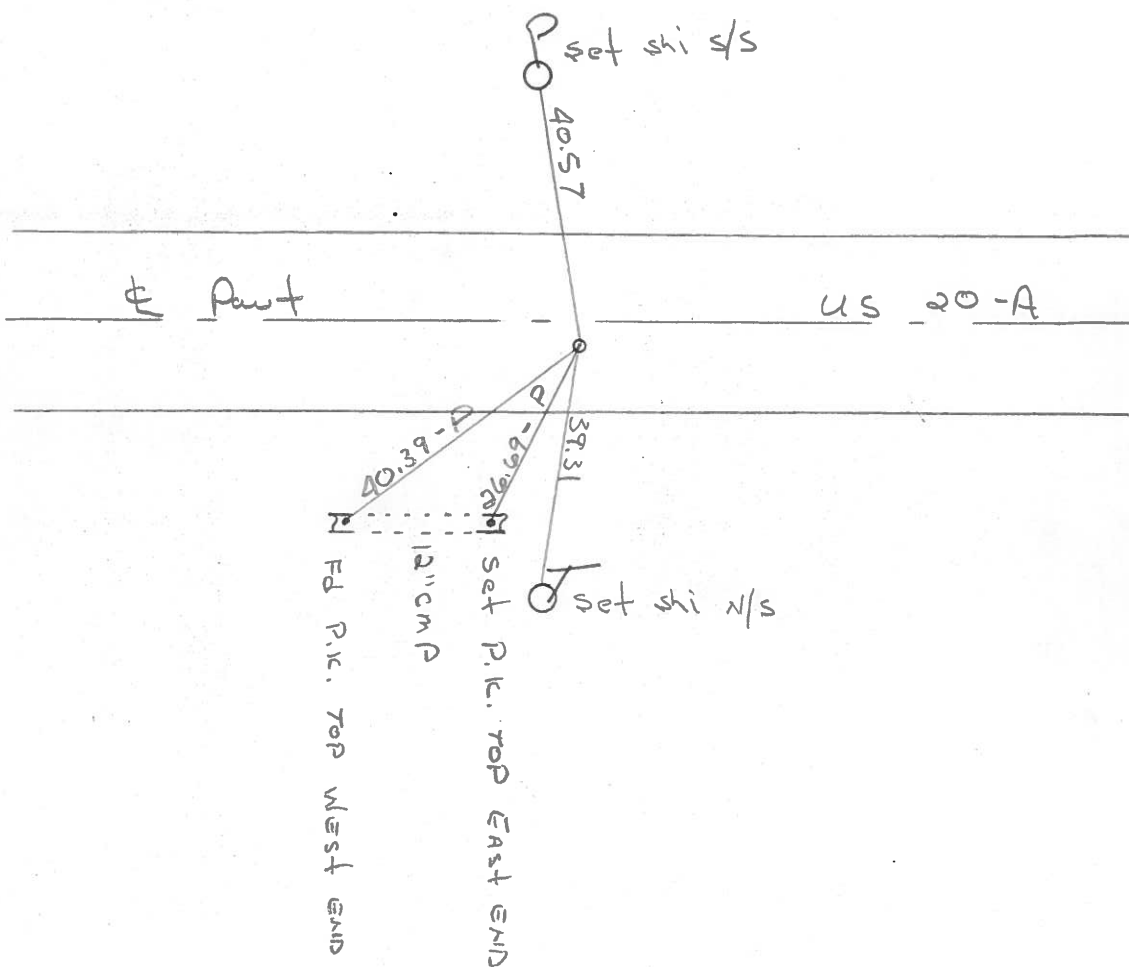
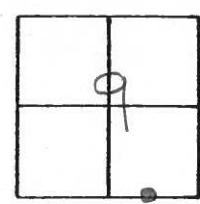
ON SURFACE - ~~BELOW~~ YES

~~LEFT - C~~ PAV'T. - RIGHT 0.8

9.8 TO Rt. EDGE PAVEMENT

S.L.M. 257+41

*Set PK/WASHER  
8-28-89 SWN*



O.D.O.T. DISTRICT 2 SURVEY OFFICE

Sht. 4 of

County Fulton US-20-A

Date 27 JUNE 79

Township German

Weather Warm

Section 9

Temp. 79°

T N, R E

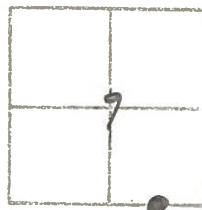
Personnel I. Stone

R. Michalak

P. Neuse

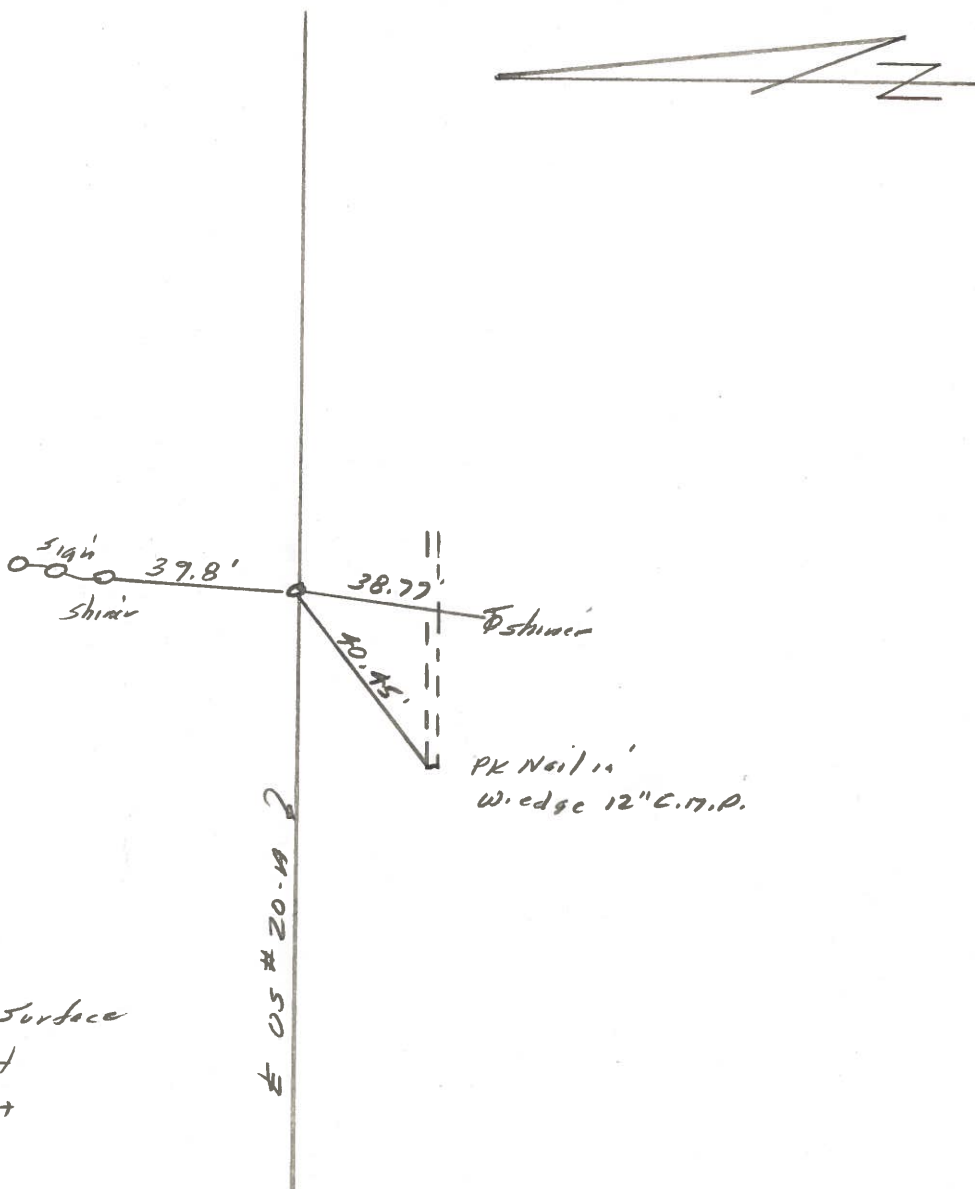
D. Curtis

D. Granata



REF. NO. **10-A**

SLM BLK TOP STA. 257+44



Ed. PK Nail TO Surface  
11.1' to N. edge put  
10.0 to S. edge put  
1/16 Cor. Sec. 9

PERSONNEL	TITLE	PERSONNEL	TITLE	COUNTY	Fulton	DATE	Feb. 12, 1973
Tom sic				S. R.	U.S. 20A	WEATHER	
Neuser				SEC.	German	TEMP.	
Jan yo							
Granata							

DESCRIPTION \_\_\_\_\_ LEFT \_\_\_\_\_ CENTER LINE \_\_\_\_\_ RIGHT \_\_\_\_\_ JOB NO. \_\_\_\_\_

