

O.D.O.T. DISTRICT 2 SURVEY OFFICE (USE ONLY)

PERSONNEL

REFERENCE NO. 11 A

SHEET 24 OF 62

NOTES MICHALAK

DATE 6/6/02

ROUTE US 20A

H.C. ROUSOS

WEATHER RAIN

COUNTY FULTON

R.C. MALINSKY

TEMP. 70°

TOWNSHIP GERMAN

DWG BY NASON

PID 101232

SECTION 10

T 7 N R 5 E

TYPE MONUMENT P.K./WASHER

ON SURFACE - ~~BELOW~~ ON

OFFSET 0.5" LT : ~~RT~~

9.7' TO LT EDGE PAVEMENT

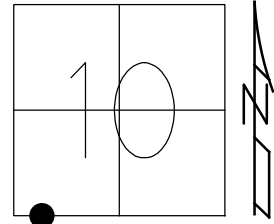
STATION: 283+92

HORZ. DATUM: _____

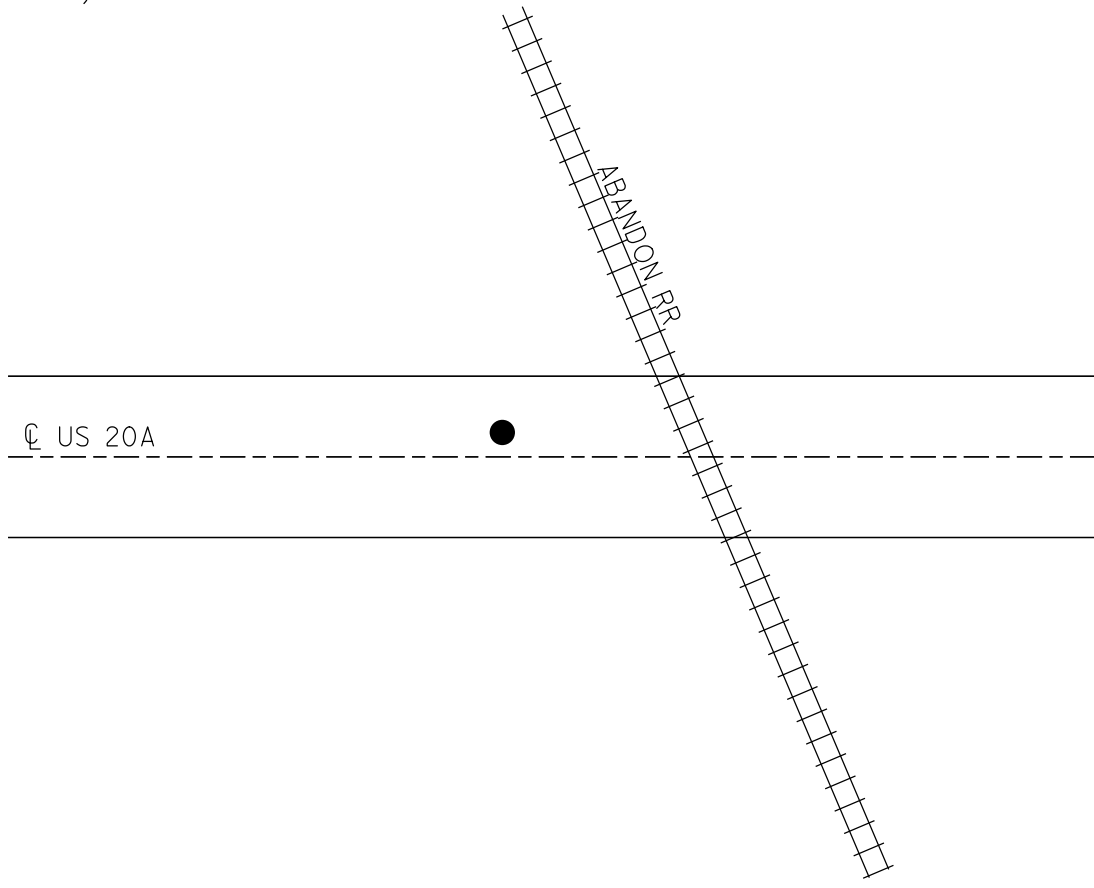
GEOID: _____

GRID: NORTHING: _____

EASTING: _____



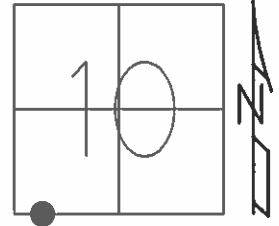
RECORD:
FD P.K./WASHER
6/6/02, TMR
DNF
7/10/19, JFO



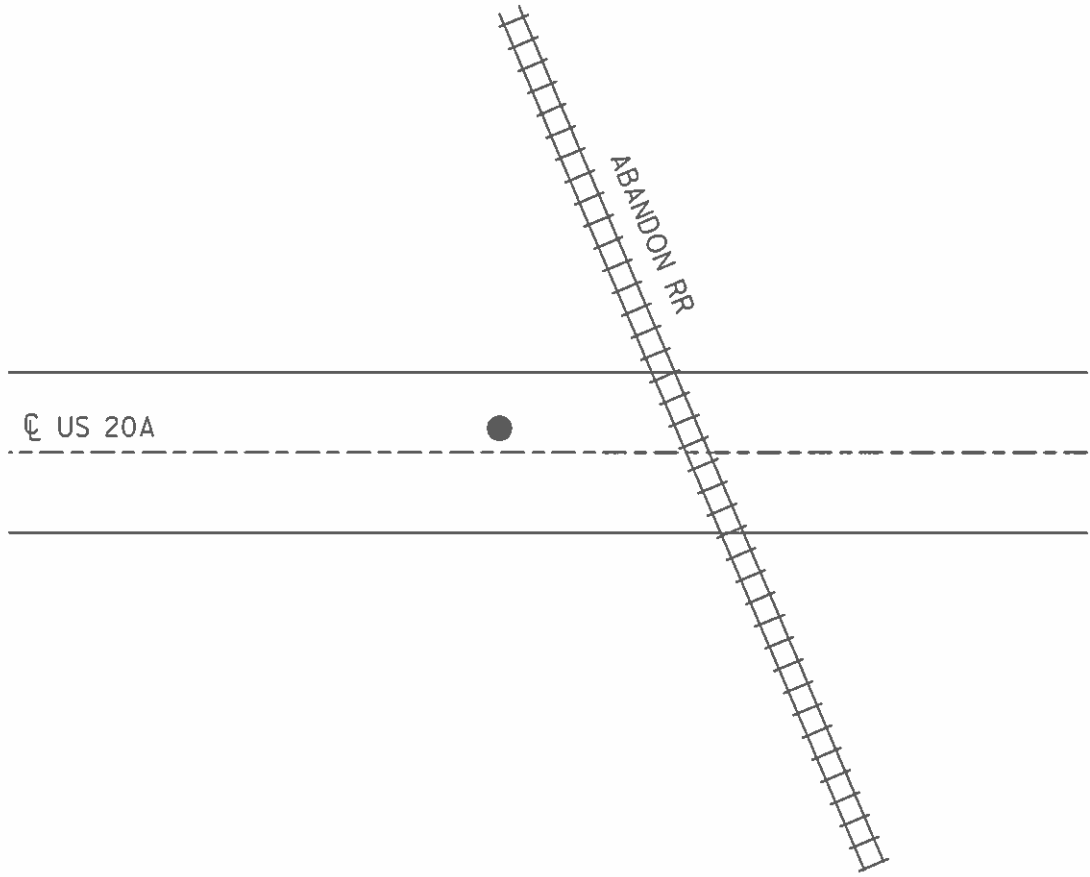
O.D.O.T. DISTRICT 2 SURVEY OFFICE (USE ONLY)

PERSONNEL _____ REFERENCE NO. 11 A SHEET 23 OF 61
NOTES MICHALAK DATE 6/6/02 ROUTE US 20A
H.C. ROUSOS WEATHER RAIN COUNTY FULTON
R.C. MALINSKY TEMP. 70° TOWNSHIP GERMAN
SECTION 10
T 7 N R 5 E

TYPE MONUMENT P.K./WASHER
ON SURFACE - ~~BELOW~~ ON _____
LEFT - ☉ PAV'T - ~~RIGHT~~ 0.5'
9.7' TOLT EDGE PAVEMENT
S.L.M. 283+92
GRID: NORTHING: _____ EASTING: _____



CONTROL TIES
WERE REMOVED
NEED TO DIG LATER



O.D.O.T. DISTRICT 2 SURVEY OFFICE

PERSONNEL

REFERENCE NO. 11A

SHEET 6 OF 30

NOTES MICHALAK

DATE 6-6-02

ROUTE U.S. 20-A

H.C. ROUSOS

WEATHER RAIN

COUNTY FULTON

R.C. MALINSKY

TEMP. 70°

TOWNSHIP GERMAN

SECTION 10

T 7 N R 5 E

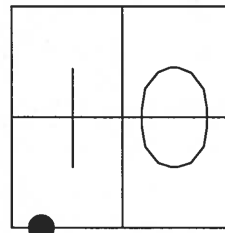
TYPE MONUMENT PK NAIL & WASHER

ON SURFACE - ~~BELOW~~ YES

LEFT - Q PAVT - ~~RIGHT~~ 0.5'

9.7 TO LT EDGE PAVEMENT

S.L.M. 283+92

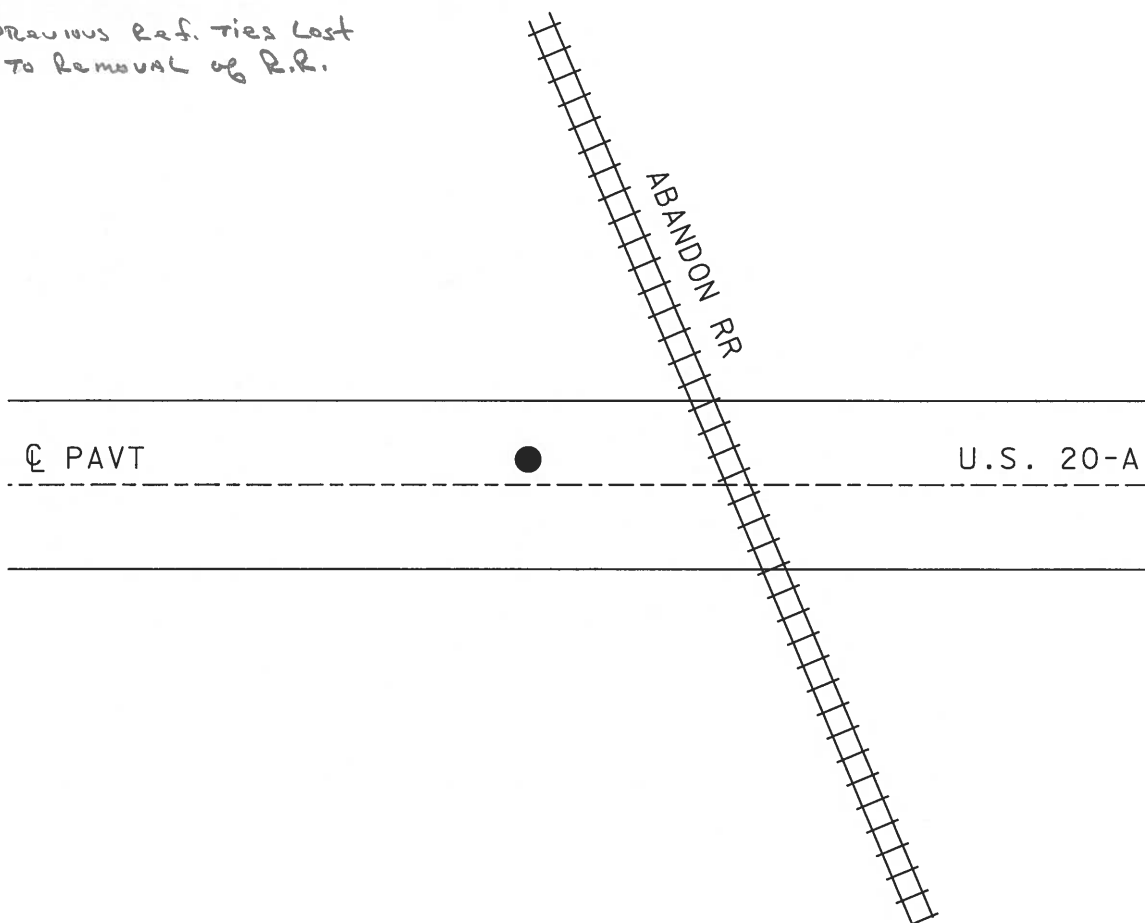


CONTROL TIES (Tacked Hubs)

WERE REMOVED BY COUNTY

NEED TO DIG LATER

ALL PREVIOUS REF. TIES LOST
DUE TO REMOVAL OF R.R.



O.D.O.T. DISTRICT 2 SURVEY OFFICE

PERSONNEL _____

REFERENCE NO. 11-A

SHEET 6 OF 26

NOTES HOFFMAN

H.C. LOSHRKE

R.C. _____

DATE 8-8-89

WEATHER CLEAR

TEMP. 80

ROUTE US 20-A

COUNTY FULTON

TOWNSHIP GERMAN

SECTION 10

T 7 N R 5 E

TYPE MONUMENT P.K. NAIL SHANK

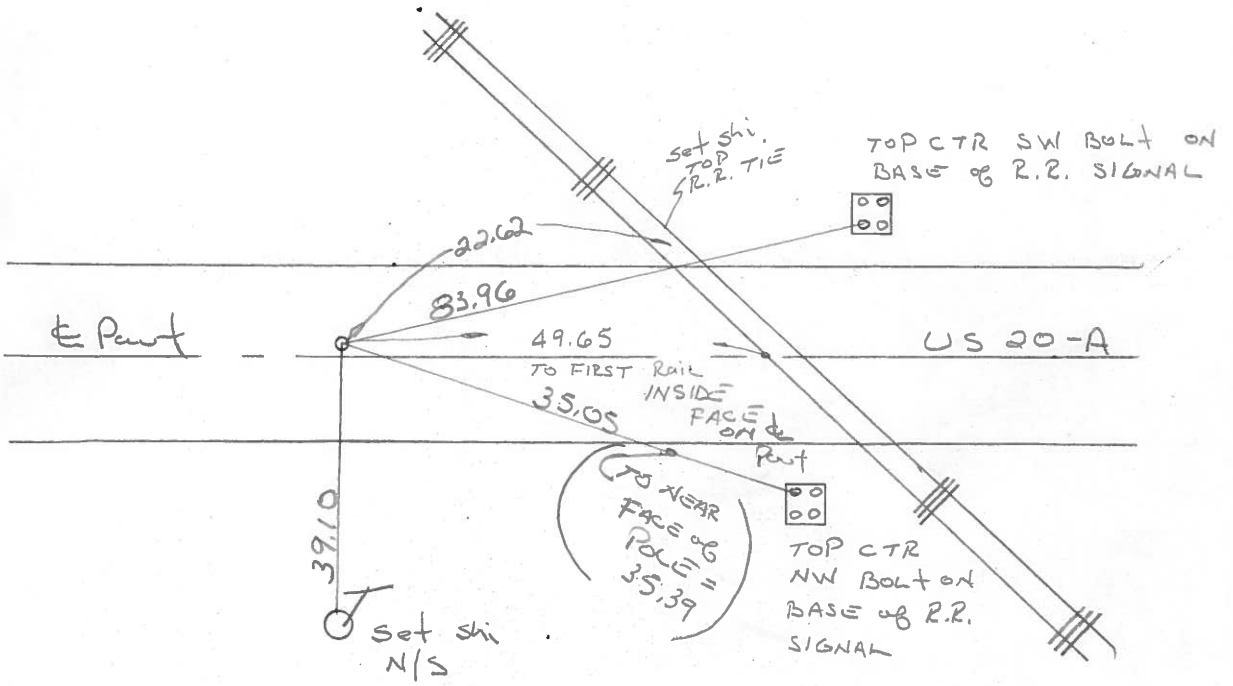
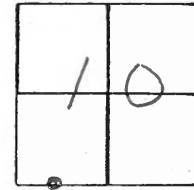
*Set P.K./washer
8-28-89 SWM*

~~ON SURFACE~~ - BELOW 4"

LEFT- ~~&~~ PAW'T. ~~-~~ RIGHT 0.5

9.7 TO Lt. EDGE PAVEMENT

S.L.M. 283 + 74



ODOT DISTRICT 2 SURVEY OFFICE

Sht. 6 of

County Fulton US-20-A

Date 27 June 79

Township German

Weather Warm

Section 10

Temp. 80°

T N, R E

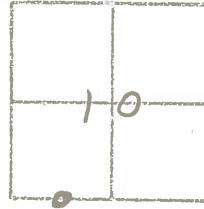
Personnel I. Stone

R. Michalak

P. Neuser

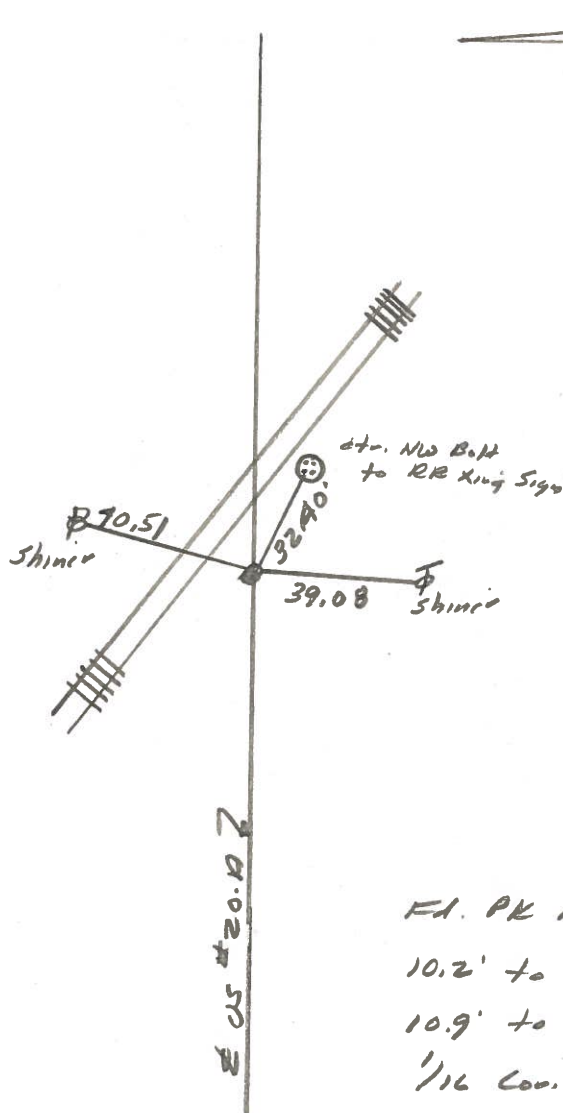
D. Curtis

D. Granta



REF NO. 11-A

SLM BLK TOP STA. 283+78



PERSONNEL	TITLE	PERSONNEL	TITLE	COUNTY	<u>Fulton</u>	DATE	<u>Feb. 12, 1973</u>
<u>Tom Sic</u>				S. R.	<u>U.S. 20A</u>	WEATHER	
<u>Newsar</u>				SEC.	<u>German</u>	TEMP.	
<u>Janyo</u>							
<u>Granata</u>							

DESCRIPTION	LEFT	CENTER LINE	RIGHT	JOB NO.
-------------	------	-------------	-------	---------

