

O.D.O.T. DISTRICT 2 SURVEY OFFICE (USE ONLY)

PERSONNEL

REFERENCE NO. 12 A

SHEET 26 OF 62

NOTES MICHALAK

DATE 6/6/02

ROUTE US 20A

H.C. ROUSOS

WEATHER RAIN

COUNTY FULTON

R.C. MALINSKY

TEMP. 65°

TOWNSHIP GERMAN

SECTION 10

DWG BY NASON

PID 101232

T 7 N R 5 E

MAG/WASHER

ON SURFACE - ~~BELOW~~ YES

OFFSET CL PAVEMENT 0.3' ~~RT~~ : RT

10.2 TO RT EDGE PAVEMENT

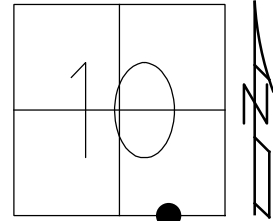
STATION: 313+54.09

HORZ.DATUM: NAD83(2011)

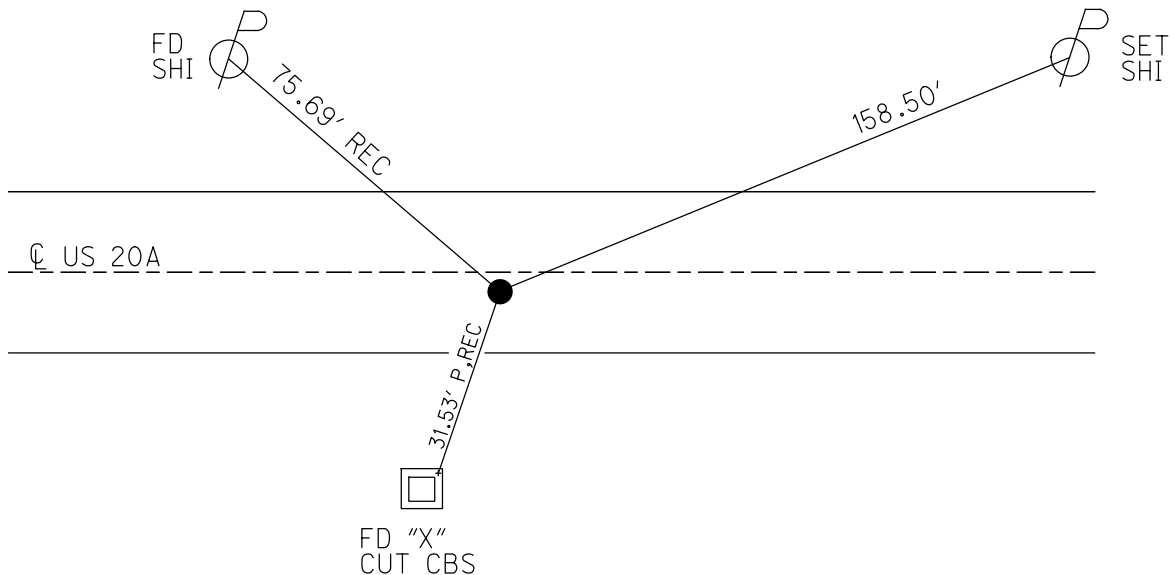
GEOID: 2012A

GRID: NORTHING: 699230.529

EASTING: 1483682.736



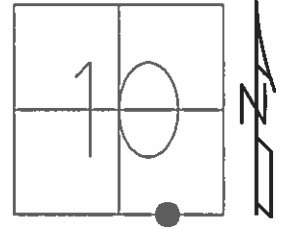
RECORD:
 STA 313+57.9
 FD P.K./WASHER
 6/6/02, TMR
 SET MAG/WASHER
 9/19/02, DCH
 REFA12
 9/29/19, EBW
 7/10/19, JFO
 SET MAG/WASHER
 10/15/19, JFO



O.D.O.T. DISTRICT 2 SURVEY OFFICE (USE ONLY)

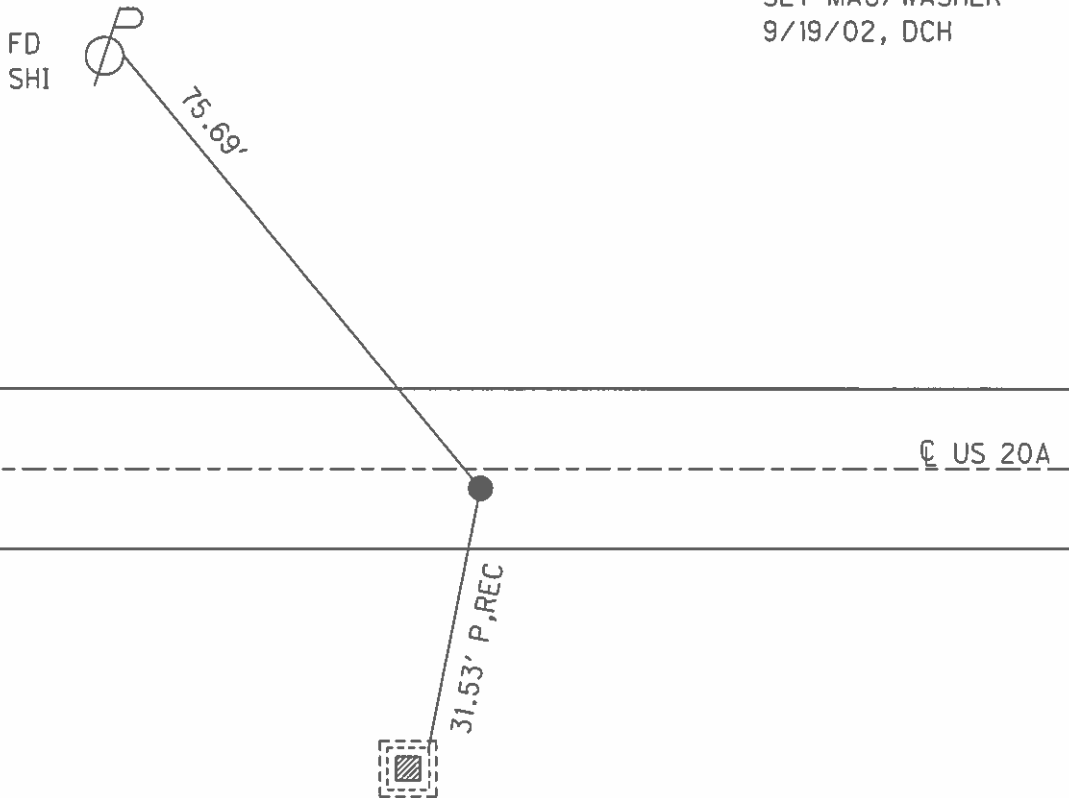
PERSONNEL _____ REFERENCE NO. 12 A SHEET 25 OF 61
 NOTES MICHALAK DATE 6/6/02 ROUTE US 20A
 H.C. ROUSOS WEATHER RAIN COUNTY FULTON
 R.C. MALINSKY TEMP. 65° TOWNSHIP GERMAN
 _____ SECTION 10
 _____ T 7 N R 5 E

TYPE MONUMENT .K./WASHER
 ON SURFACE - ~~BELOW~~ ON _____
~~LEFT~~ - ℄ PAV'T - RIGHT 0.3'
10.2' TO RT EDGE PAVEMENT
 S.L.M. 313+55
 GRID: NORTHING: _____ EASTING: _____



RECORD: OLD STA 313+57.9

SET MAG/WASHER
 9/19/02, DCH



FD "X" CUT TOP
 NE CORNER OF
 CATCH BASIN

O.D.O.T. DISTRICT 2 SURVEY OFFICE

PERSONNEL

REFERENCE NO. 12A

SHEET 8 OF 30

NOTES MICHALAK

DATE 6-6-02

ROUTE U.S. 20-A

H.C. ROUSOS

WEATHER RAIN

COUNTY FULTON

R.C. MALINSKY

TEMP. 65°

TOWNSHIP GERMAN

SECTION 10

T 7 N R 5 E

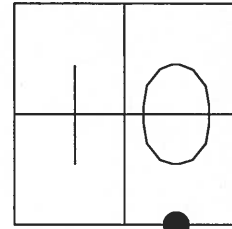
TYPE MONUMENT PK NAIL & WASHER

ON SURFACE - ~~BELOW~~ YES

~~LEFT~~ - Q PAV'T - RIGHT 0.3'

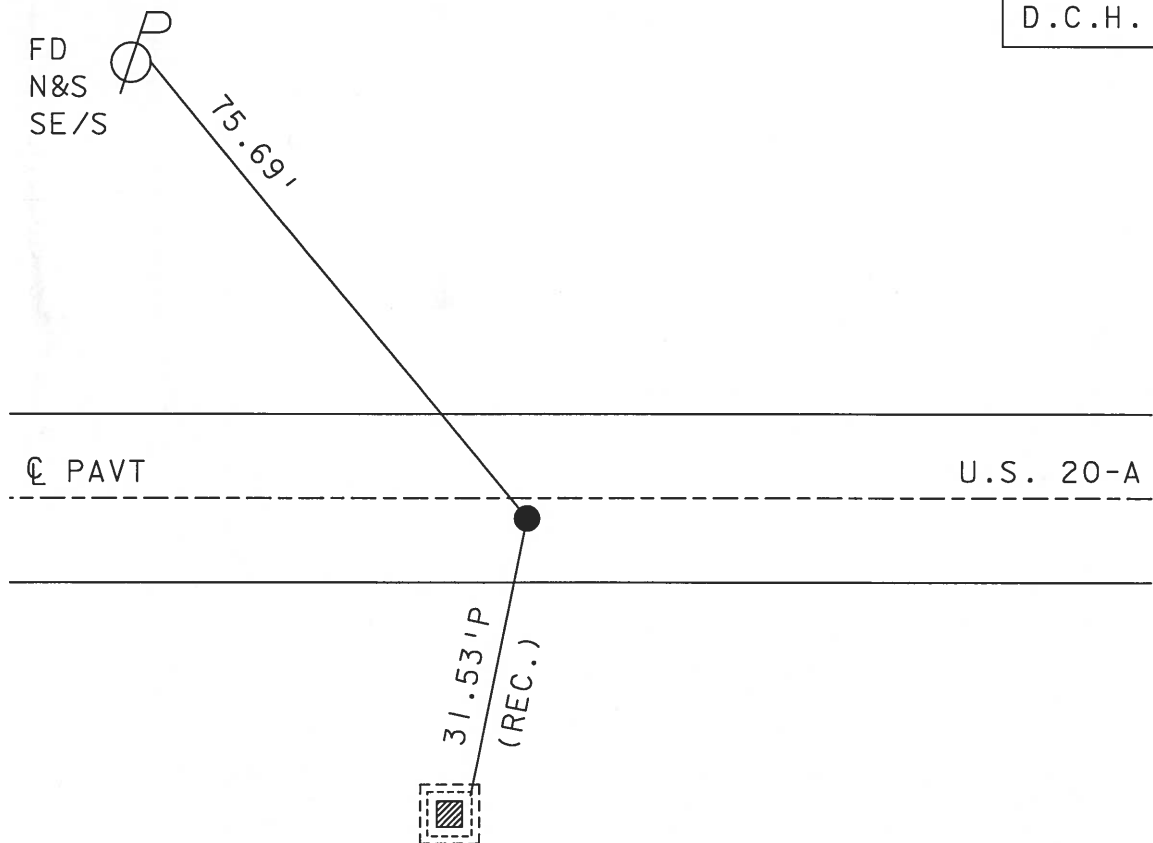
10.2 TO RT EDGE PAVEMENT

S.L.M. 313+55



RECORD: OLD STA 313+57.9

SET MAG NAIL
& WASHER
9-19-02
D.C.H.



FD "X" CUT TOP
NE CORNER OF
CATCH BASIN

O.D.O.T. DISTRICT 2 SURVEY OFFICE

PERSONNEL _____

REFERENCE NO. 12-A

SHEET 8 OF 26

NOTES Hoffman

H.C. LOZHEKE

R.C. _____

DATE 8-9-89

WEATHER CLEAR

TEMP. 80°

ROUTE US 20-A

COUNTY FULTON

TOWNSHIP GERMAN

SECTION 10

T. 7 N. R 5 E

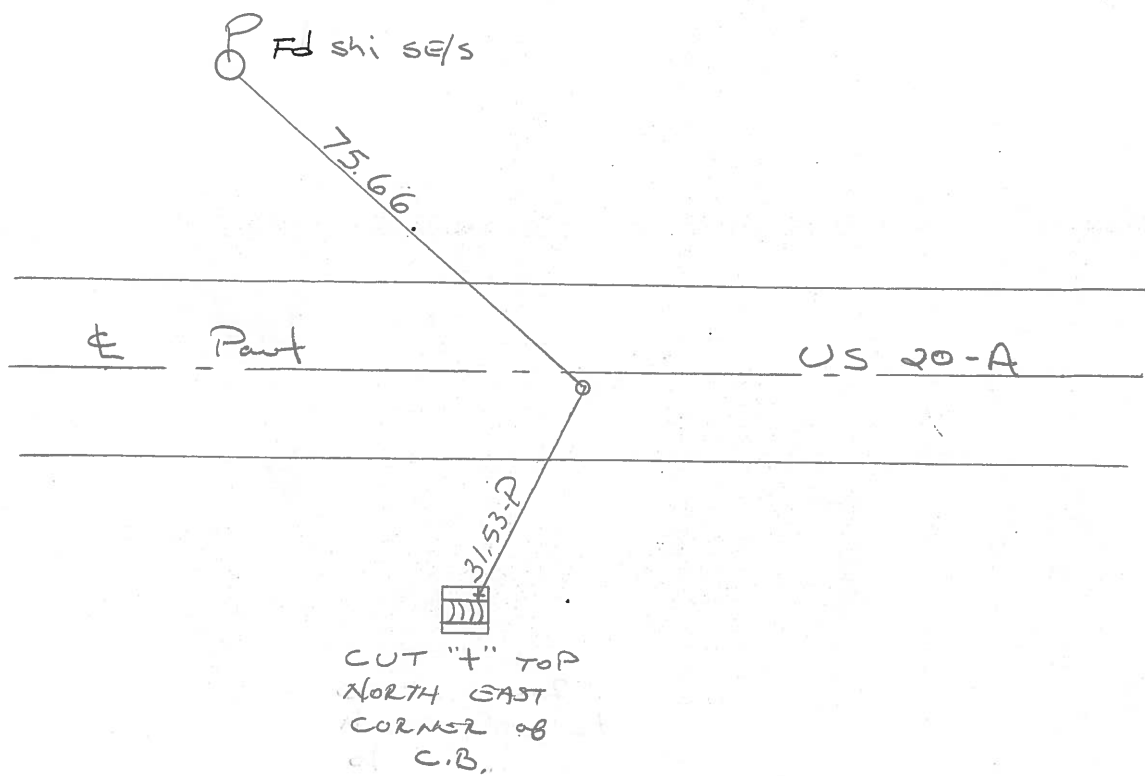
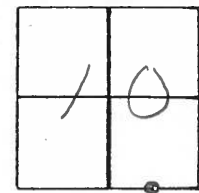
TYPE MONUMENT P.K. NAIL *Set P.K./washer 8-28-89 swk*

ON SURFACE - ~~BELOW~~ YES

~~LEFT~~ & PAV'T. - RIGHT 0.3

10.2 TO RT EDGE PAVEMENT

S.L.M. 313 + 37



Records: OLD sta. 313 + 57.9

O.D.O.T. DISTRICT 2 SURVEY OFFICE

Sht. 8 of

County Fulton US-20-A

Date 27 June 79

Township German

Weather Warm

Section 10

Temp. 80°

T N, R E

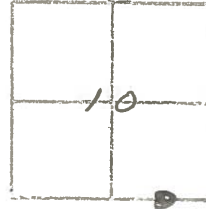
Personnel I. Stone

R. Michalak

P. Neuse

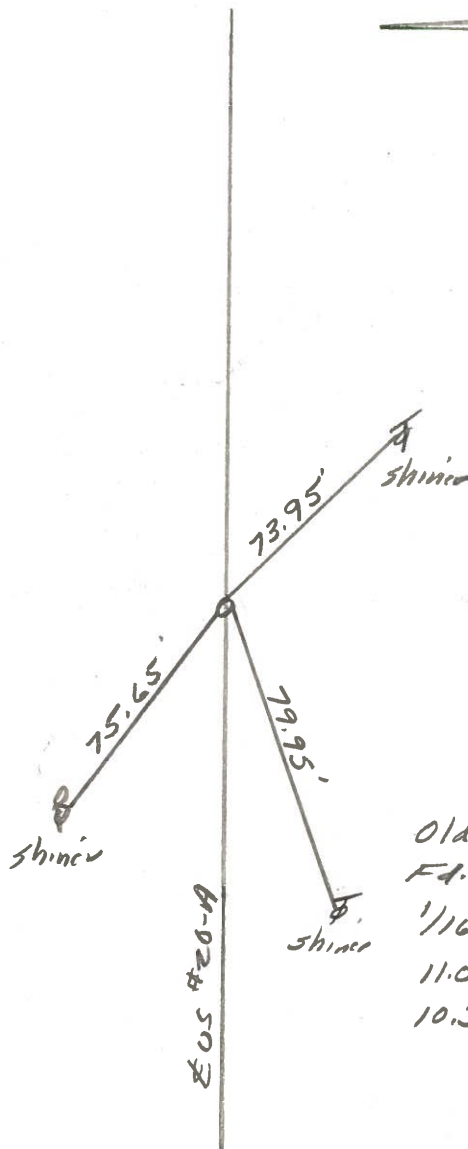
D. Curtis

D. Granata



REF No. 12-A

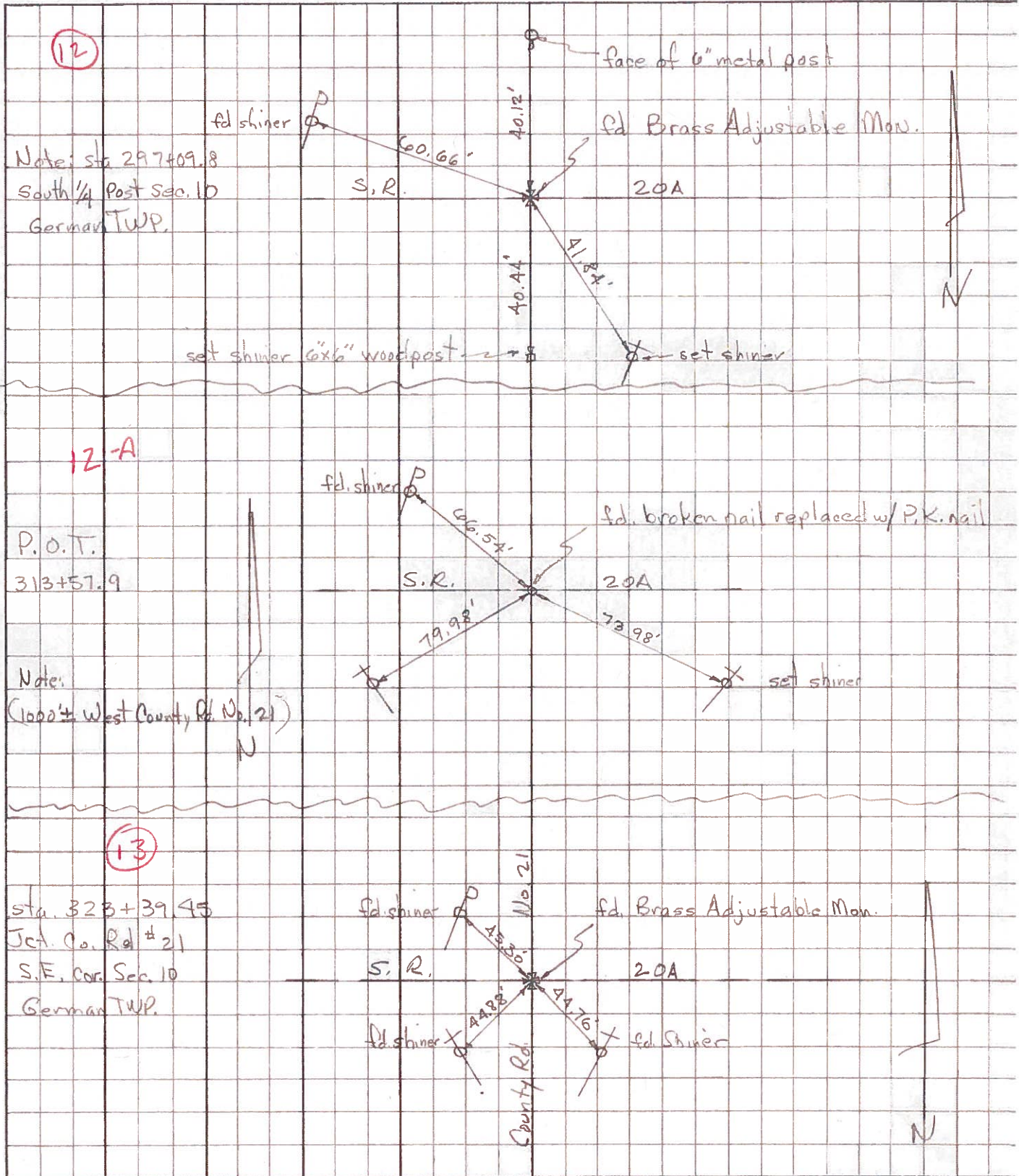
SLM DLRTOP STA. 313+41



Old Sta. 313+57.9
 Ft. PK Nail to Surface
 1/16 Cor. Sec. 10
 11.0" to N. edge put.
 10.3' to S. edge put.

PERSONNEL	TITLE	PERSONNEL	TITLE	COUNTY	Fulton	DATE	Feb. 12, 1973
Tomsic				S. R.	U.S. 20A	WEATHER	
Neuser				SEC.	German	TEMP.	
Vanyo							
Granata							

DESCRIPTION _____ LEFT _____ CENTER LINE _____ RIGHT _____ JOB NO. _____



PERSONNEL TITLE PERSONNEL TITLE

Beach
Armbruster
Knappe

COUNTY Fulton

DATE 11 July 58

S. R. US-20A

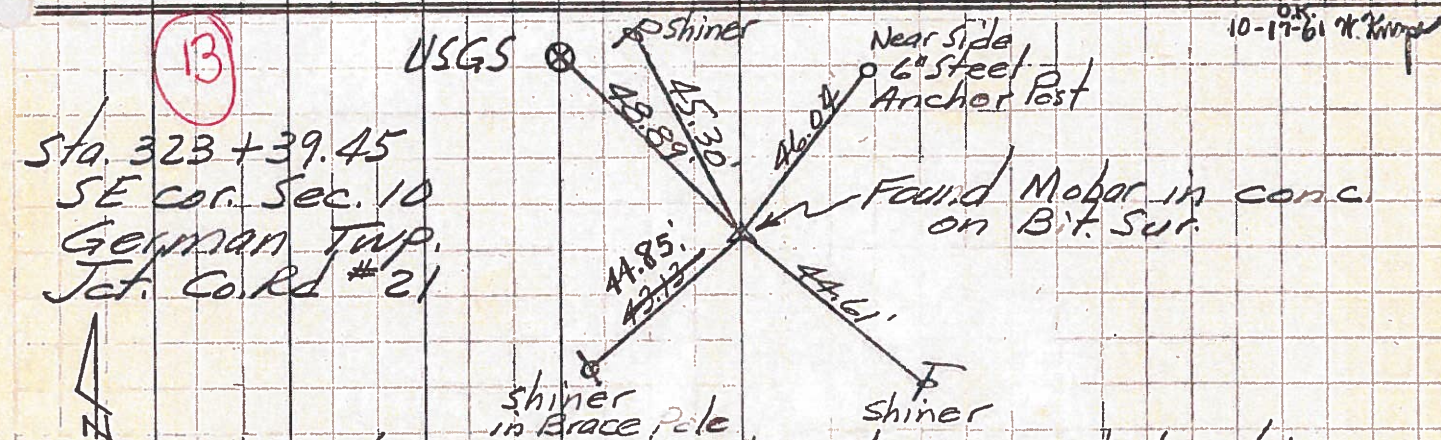
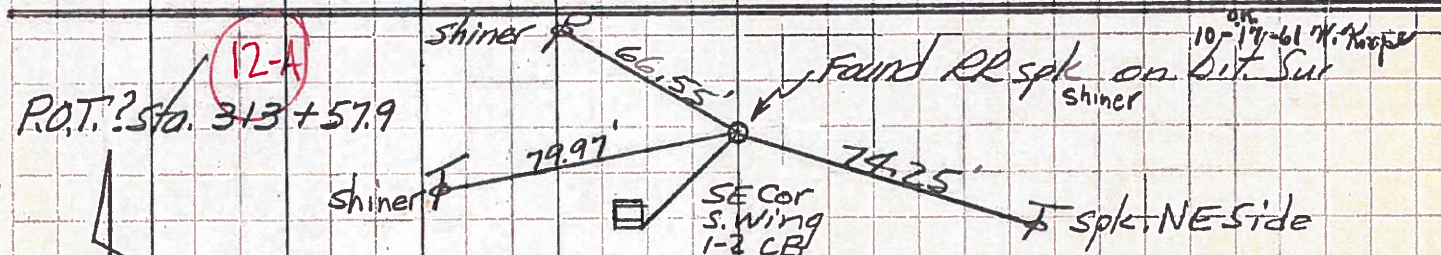
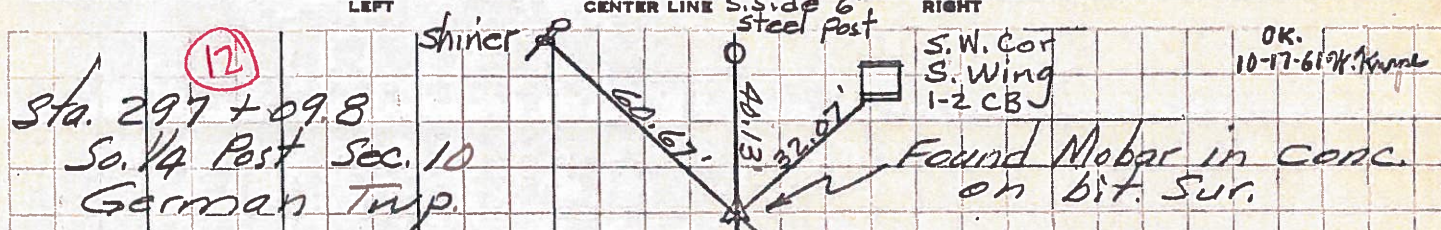
WEATHER

SEC. 4.13

TEMP.

DESCRIPTION

JOB NO. 02276



NOTE: USGS shown here is not in its original location

