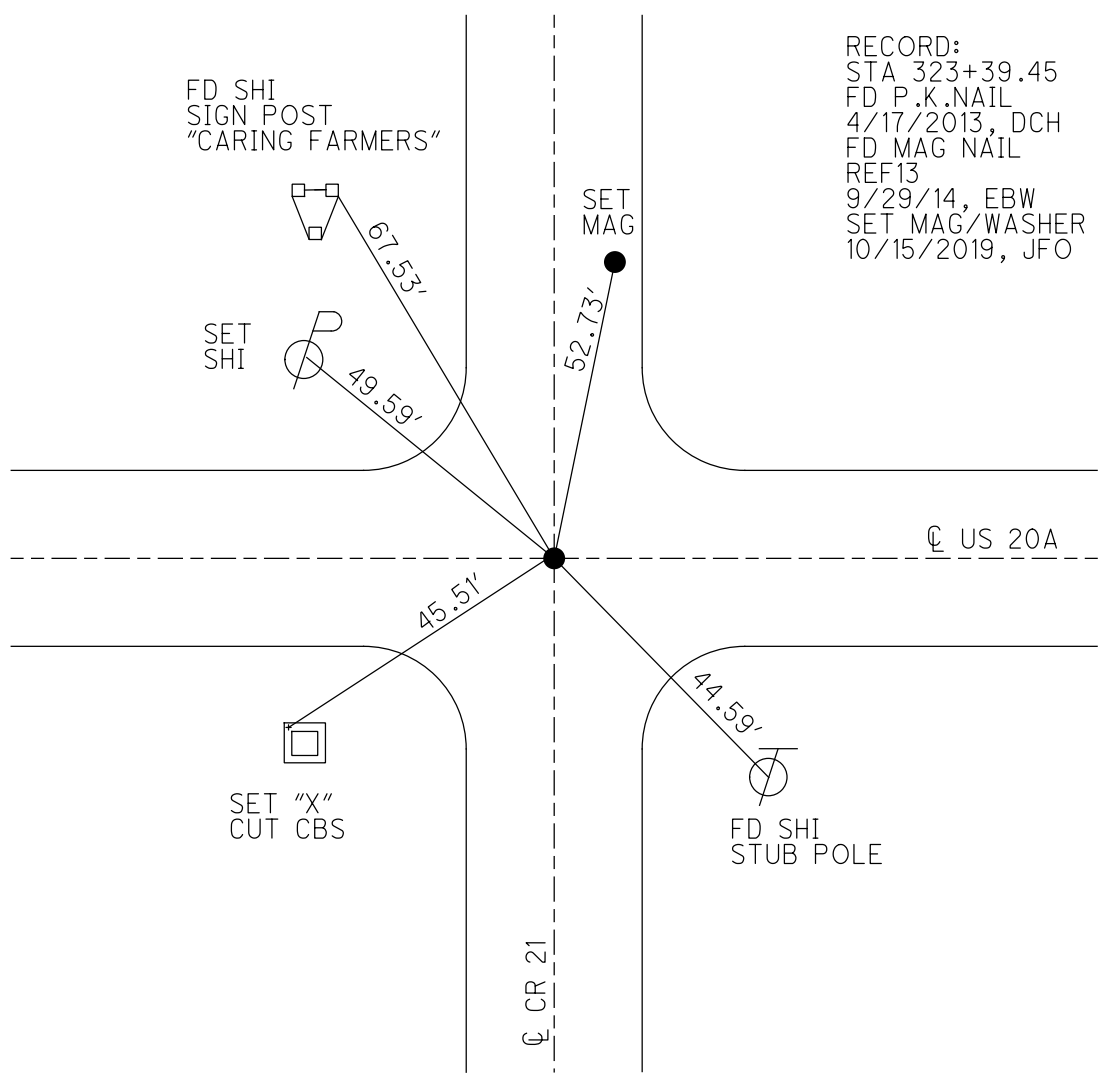
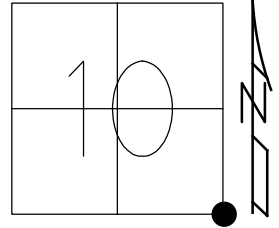


O.D.O.T. DISTRICT 2 SURVEY OFFICE (USE ONLY)

PERSONNEL \_\_\_\_\_ REFERENCE NO. 13 SHEET 27 OF 62  
 NOTES O'DONNELL DATE 7/10/19 ROUTE US 20A  
 H.C. LEU WEATHER SUNNY COUNTY FULTON  
 R.C. AUBLE TEMP. 76° TOWNSHIP GERMAN  
MILLER SECTION 10  
 DWG BY NASON PID 101232 T 7 N R 5 E

TYPE MONUMENT MAG/WASHER  
 ON ~~SURFACE~~ - BELOW 3"  
 OFFSET Q PAVEMENT 0.3' ~~ET~~ : RT  
- TO - EDGE PAVEMENT  
 STATION: 323+35.12  
 HORZ.DATUM: NAD83(2011) GEOID: 2012A  
 GRID: NORTHING: 699211.643 EASTING: 1484663.585

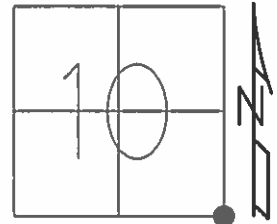


RECORD:  
 STA 323+39.45  
 FD P.K.NAIL  
 4/17/2013, DCH  
 FD MAG NAIL  
 REF13  
 9/29/14, EBW  
 SET MAG/WASHER  
 10/15/2019, JFO

O.D.O.T. DISTRICT 2 SURVEY OFFICE (USE ONLY)

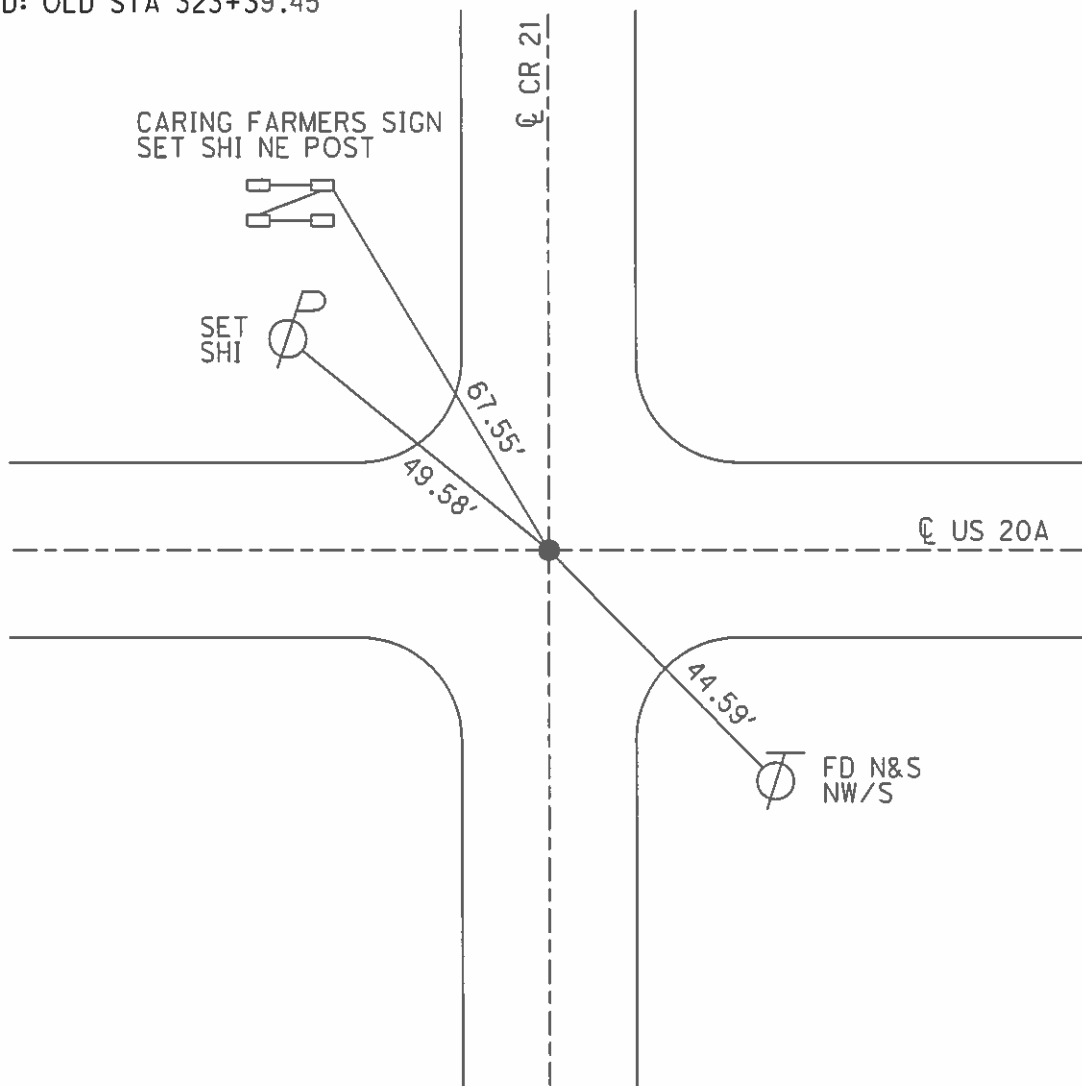
|           |               |           |                 |           |               |           |
|-----------|---------------|-----------|-----------------|-----------|---------------|-----------|
| PERSONNEL | REFERENCE NO. | <u>13</u> | SHEET           | <u>26</u> | OF            | <u>61</u> |
| NOTES     | <u>HOMAN</u>  | DATE      | <u>04-17-13</u> | ROUTE     | <u>US 20A</u> |           |
| H.C.      | <u>ROUSOS</u> | WEATHER   | <u>SUNNY</u>    | COUNTY    | <u>FULTON</u> |           |
| R.C.      | <u>LAU</u>    | TEMP.     | <u>50°</u>      | TOWNSHIP  | <u>GERMAN</u> |           |
|           |               |           |                 | SECTION   | <u>10</u>     |           |
|           |               |           |                 | T         | <u>7</u>      | R         |
|           |               |           |                 |           | <u>N</u>      | <u>5</u>  |
|           |               |           |                 |           | <u>E</u>      |           |

TYPE MONUMENT \_\_\_\_\_ PK NAIL \_\_\_\_\_  
~~ON SURFACE~~ - BELOW \_\_\_\_\_ 3"  
 LEFT -  $\odot$  PAV'T - RIGHT \_\_\_\_\_ 0.3'  
 \_\_\_\_\_ TO \_\_\_\_\_ EDGE PAVEMENT  
 S.L.M. \_\_\_\_\_ 323+37



GRID: NORTHING: 699211.555 EASTING: 1484663.638

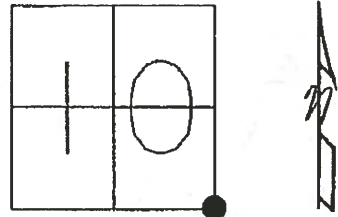
RECORD: OLD STA 323+39.45



O.D.O.T. DISTRICT 2 SURVEY OFFICE

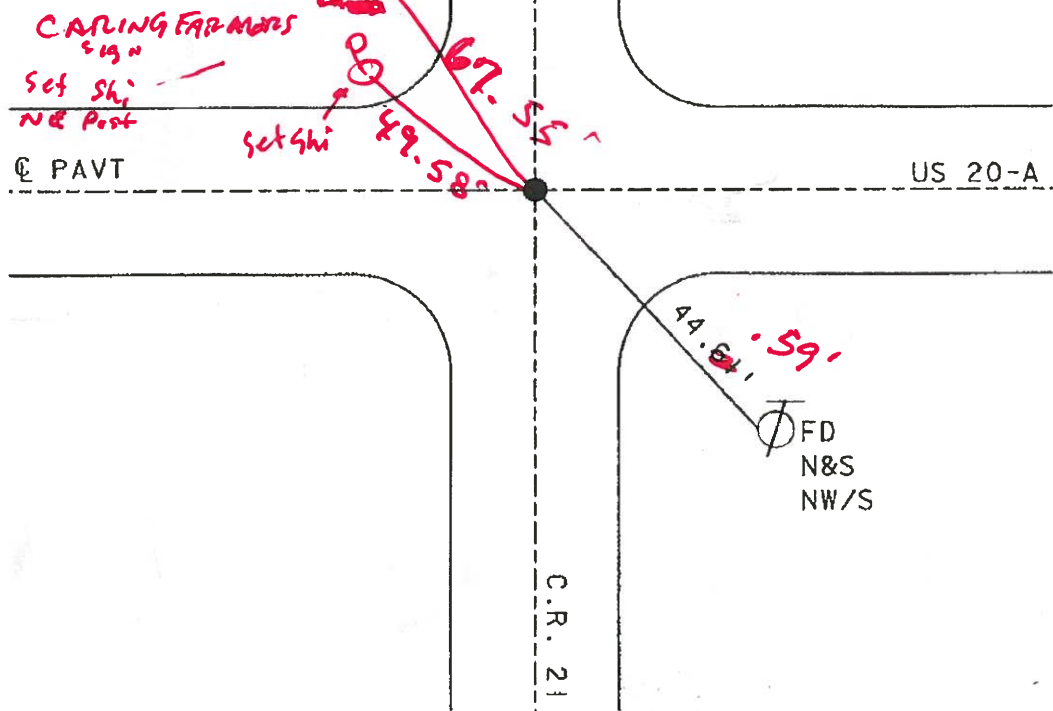
PERSONNEL Homan REFERENCE NO. 13 SHEET 9 OF 30  
 NOTES MICHALAK DATE 6-6-02 <sup>4-17-13</sup> ROUTE U.S. 20-A  
 H.C. ROUSOS ✓ WEATHER RAIN <sup>Sunny</sup> COUNTY FULTON  
 R.C. MALINSKY <sup>LOW</sup> TEMP. 60° <sup>50°</sup> TOWNSHIP GERMAN  
 SECTION 10  
 T 7 N R 5 E

TYPE MONUMENT PK NAIL & WASHER  
 ON SURFACE - ~~BELOW~~ YES 3" Down  
~~LEFT~~ - Q PAVT - RIGHT 0.3'  
TO EDGE PAVEMENT  
 S.L.M. 323+37



RECORD: OLD STA 323+39.45

NO POINT WAS RESET  
 POLES ON NORTH SIDE  
 OF US 20A WERE MOVED  
 DUE TO THE ROADSIDE  
 DITCHES BEING MOVED  
 FARTHER OUT, DURING A  
 FULTON CO. ENGR. PROJECT.  
 CHECK ENGR OFFICE FOR THE  
 SECTION CHANGE.



O.D.O.T. DISTRICT 2 SURVEY OFFICE

PERSONNEL \_\_\_\_\_

REFERENCE NO. 13

SHEET 9 OF 26

NOTES HoFFman

H.C. COEHRKE

DATE 8-8-89

ROUTE US 20-A

R.C. \_\_\_\_\_

WEATHER CLEAR

COUNTY FULTON

TEMP. 80

TOWNSHIP GERMAN

SECTION 10

T 7 N R 5 E

TYPE MONUMENT P.K. NAIL

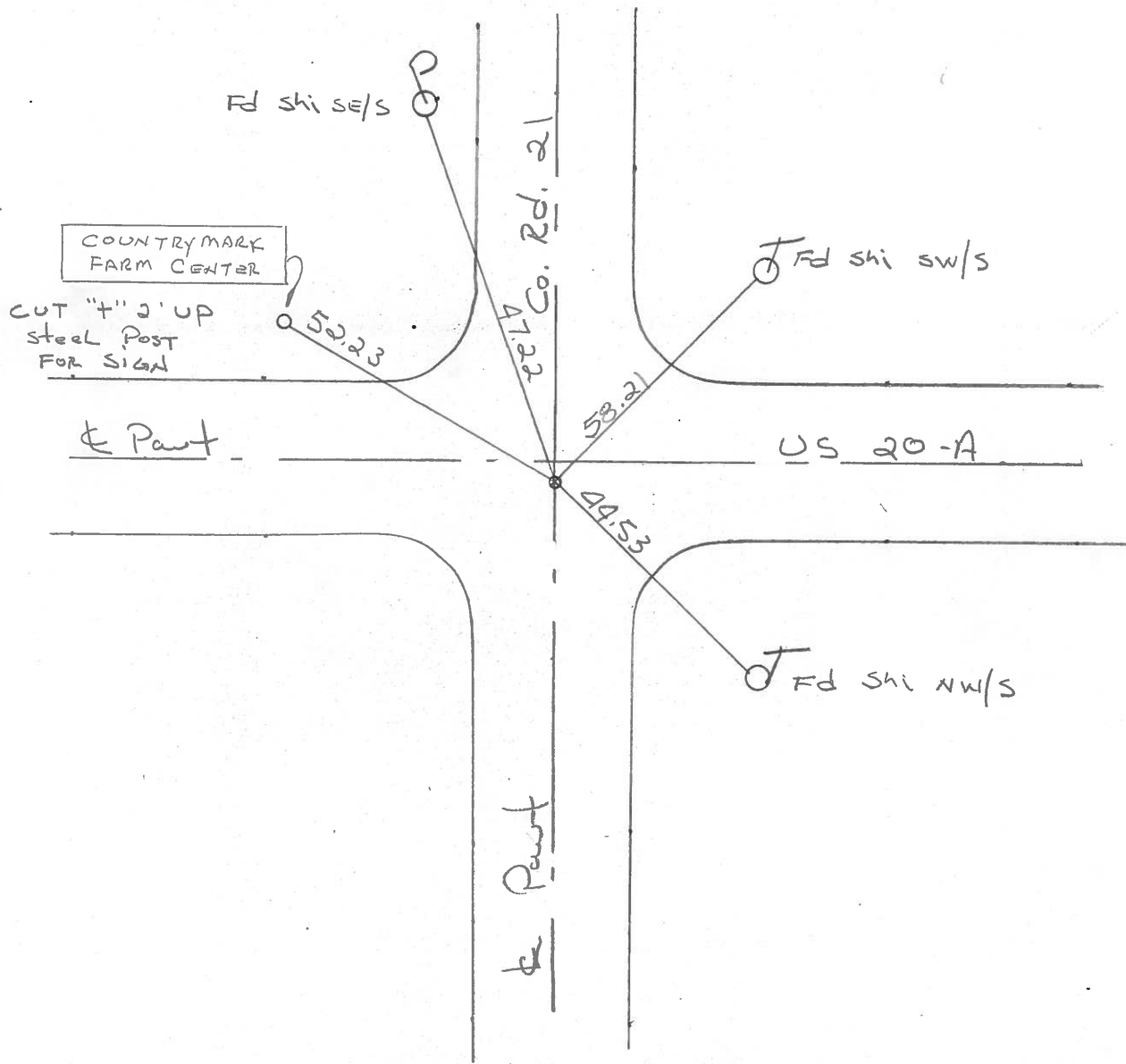
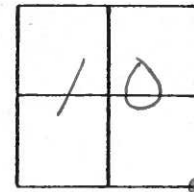
*Set P.K. / WASHER  
8-28-89 SWM*

ON SURFACE - BELOW YES

~~LEFT~~ - & PAV'T. - RIGHT 0.3

TO EDGE PAVEMENT

S.L.M. 323+19



Records: OLD sta 323+39.45

Q.D.O.T. DISTRICT 2 SURVEY OFFICE

Sht. 9 of

County Fulton S.R. US-20A

Date 27 June 79

Township German

Weather Warm

Section 10

Temp. 81°

T N, R E

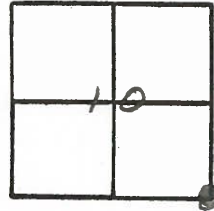
Personnel L. Stone

R. Michalak

P. Neuser

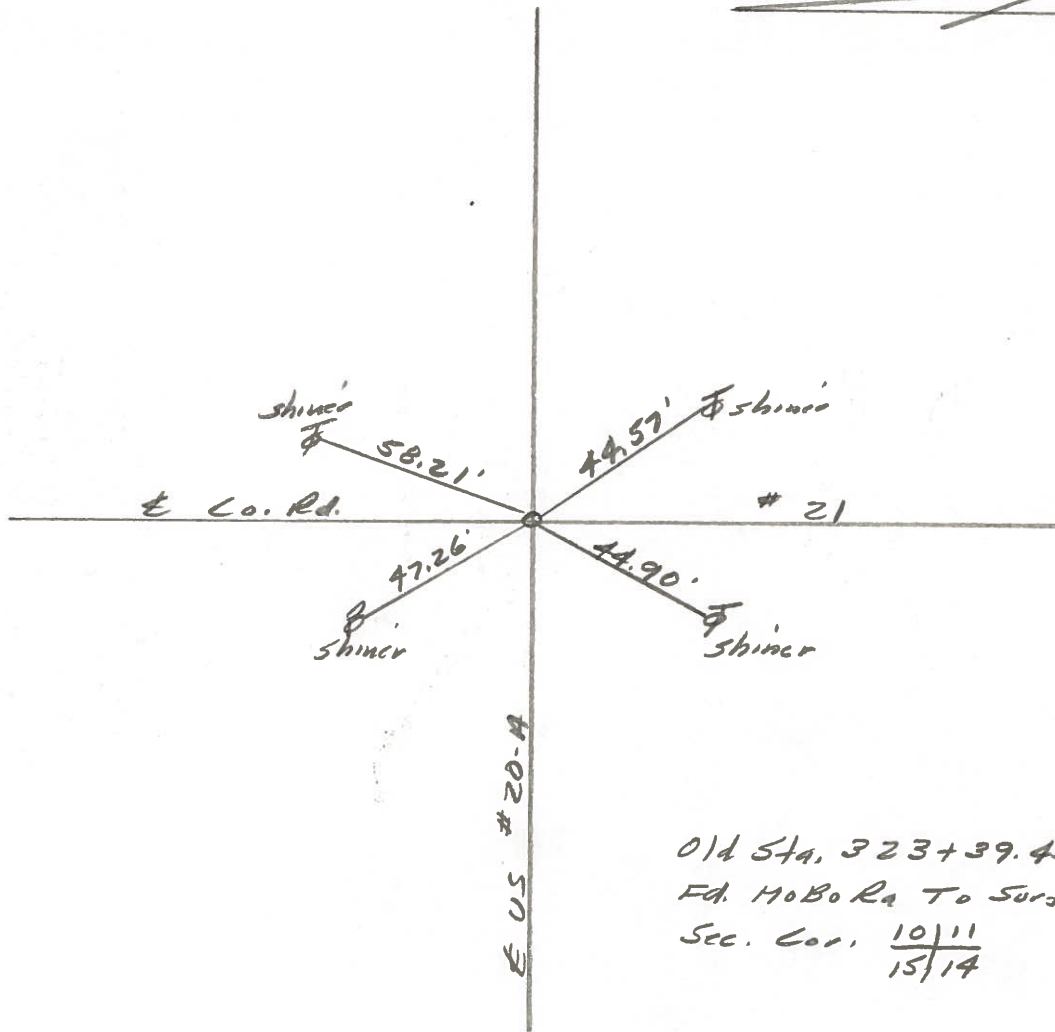
D. Curtis

D. Granatg



REF. NO. 13

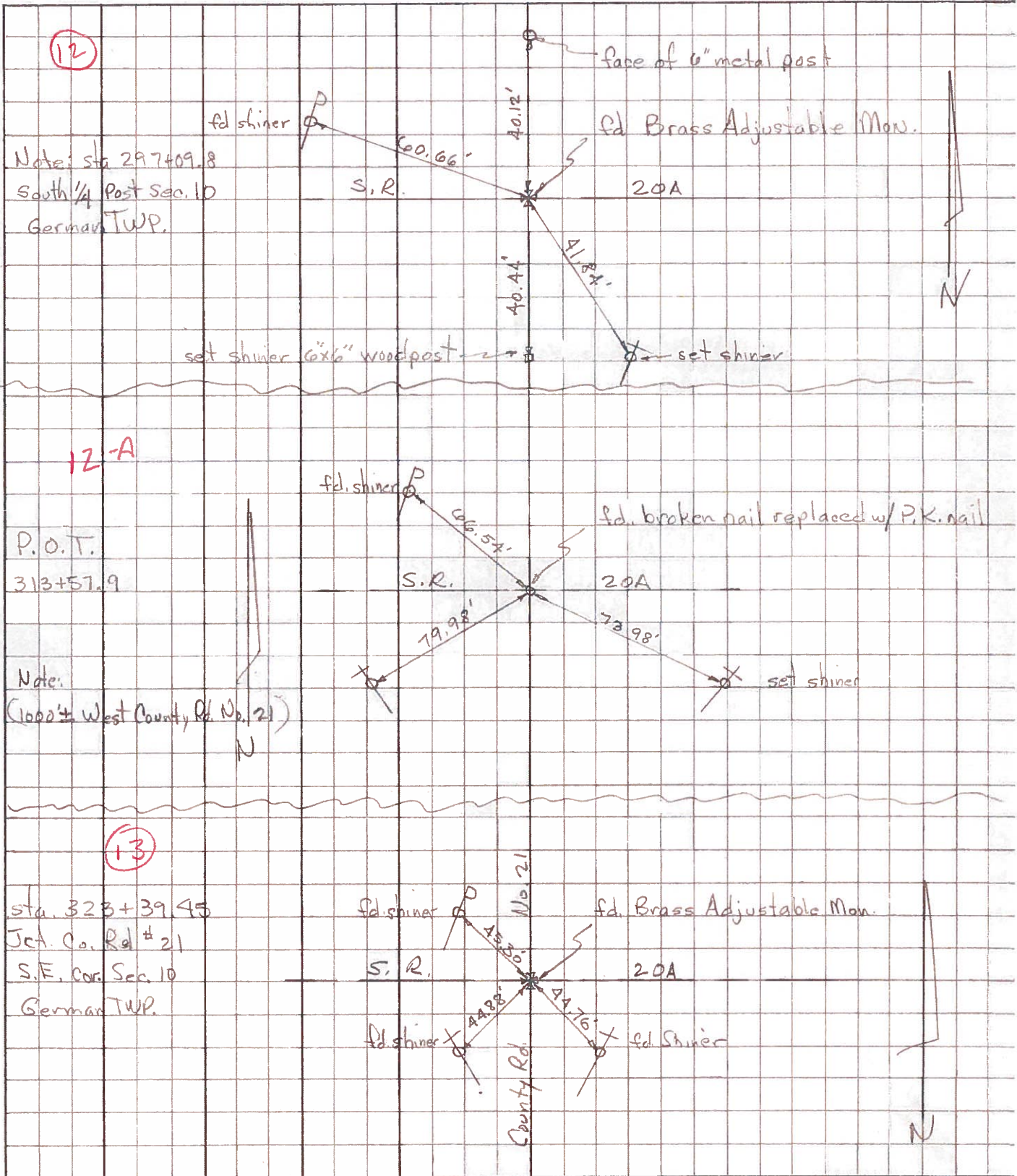
SLM. BLKTOP STA. 323+22.6



Old Sta. 323+39.45  
Ed. HoBo Ra To Surface  
Sec. Cor. 10/11  
15/14

| PERSONNEL | TITLE | PERSONNEL | TITLE | COUNTY         | DATE          | WEATHER | TEMP. |
|-----------|-------|-----------|-------|----------------|---------------|---------|-------|
| Tomsic    |       |           |       | Fulton         | Feb. 12, 1973 |         |       |
| Neuser    |       |           |       | S. R. U.S. 20A |               |         |       |
| Vanyo     |       |           |       | SEC. German    |               |         |       |
| Granata   |       |           |       |                |               |         |       |

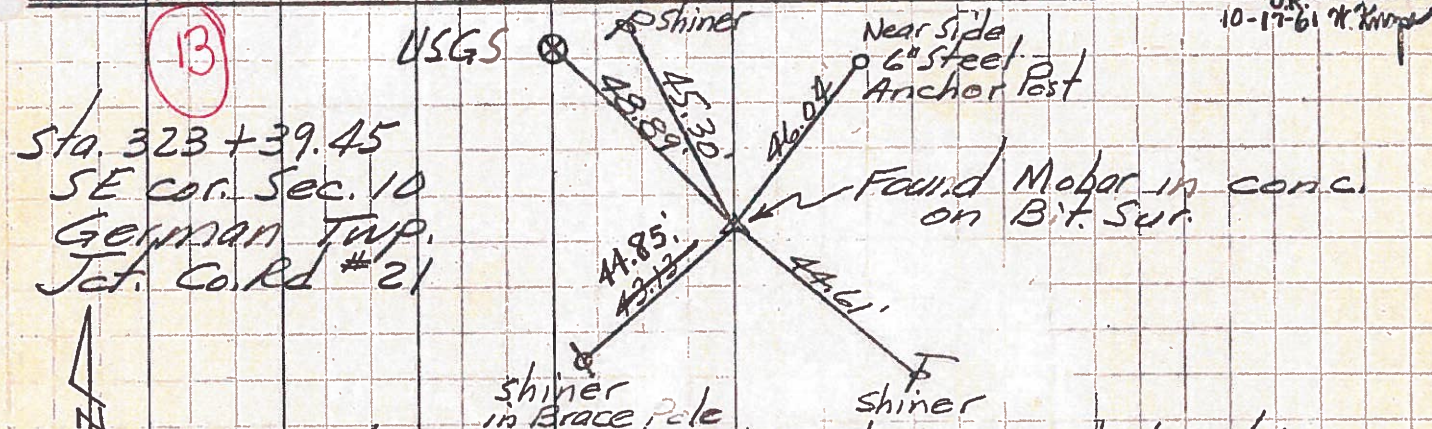
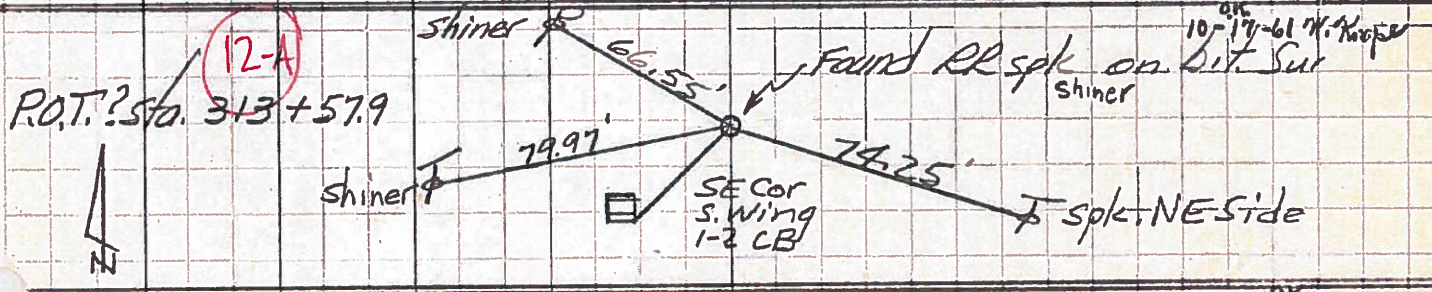
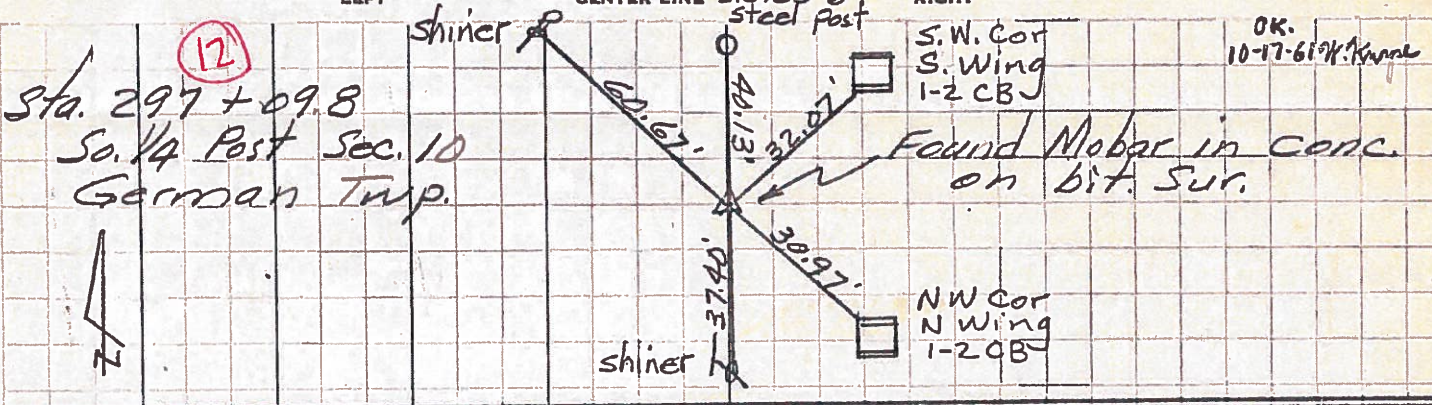
DESCRIPTION \_\_\_\_\_ LEFT \_\_\_\_\_ CENTER LINE \_\_\_\_\_ RIGHT \_\_\_\_\_ JOB NO. \_\_\_\_\_



| PERSONNEL  | TITLE | PERSONNEL | TITLE |
|------------|-------|-----------|-------|
| Beach      |       |           |       |
| Armbruster |       |           |       |
| Knape      |       |           |       |

COUNTY Fulton DATE 11 July 58  
 S. R. US-20A WEATHER \_\_\_\_\_  
 SEC. 4.13 TEMP. \_\_\_\_\_

DESCRIPTION \_\_\_\_\_ LEFT \_\_\_\_\_ CENTER LINE \_\_\_\_\_ RIGHT \_\_\_\_\_ JOB NO. 02276



NOTE: USGS shown here is not in its original location

