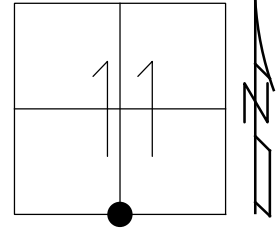


O.D.O.T. DISTRICT 2 SURVEY OFFICE (USE ONLY)

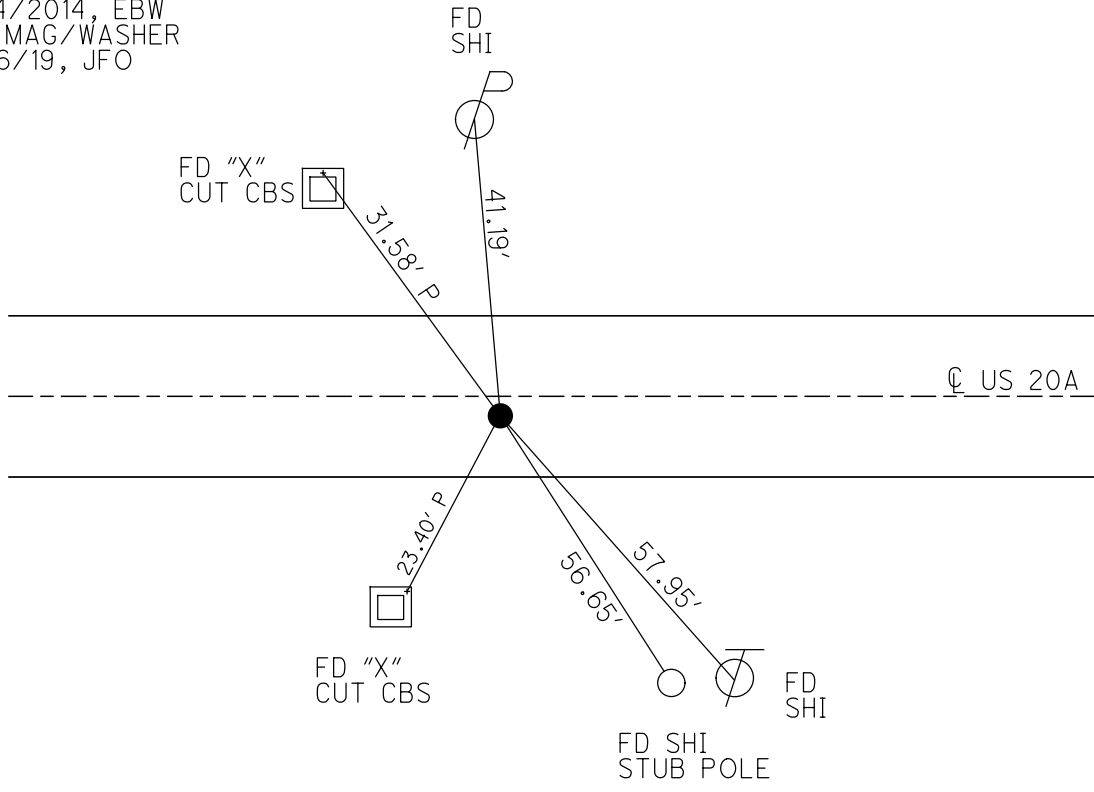
PERSONNEL \_\_\_\_\_ REFERENCE NO. 14 SHEET 28 OF 62  
 NOTES O'DONNELL DATE 7/10/19 ROUTE US 20A  
 H.C. LEU WEATHER SUNNY COUNTY FULTON  
 R.C. AUBLE TEMP. 67° TOWNSHIP GERMAN  
MILLER  
 DWG BY NASON PID 101232 SECTION 11  
 T 7 N R 5 E

TYPE MONUMENT MAG/WASHER  
 ON SURFACE - ~~BELOW~~ YES \_\_\_\_\_  
 OFFSET 0.8' Pavement RT  
9.5 TO RT EDGE PAVEMENT  
 STATION: 349+84.98

HORIZ.DATUM: NAD83(2011) GEOID: 2012A  
 GRID: NORTHING: 699173.752 EASTING: 1487313.172



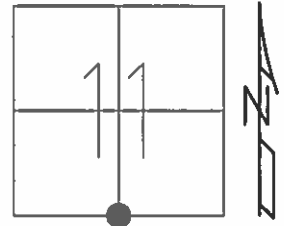
RECORD:  
 STA 349+89.31  
 FD P.K./WASHER  
 6/6/02, TMR  
 SET MAG/WASHER  
 4/22/03, DCH  
 FD MAG/WASHER  
 REF14  
 9/24/2014, EBW  
 SET MAG/WASHER  
 10/16/19, JFO



O.D.O.T. DISTRICT 2 SURVEY OFFICE (USE ONLY)

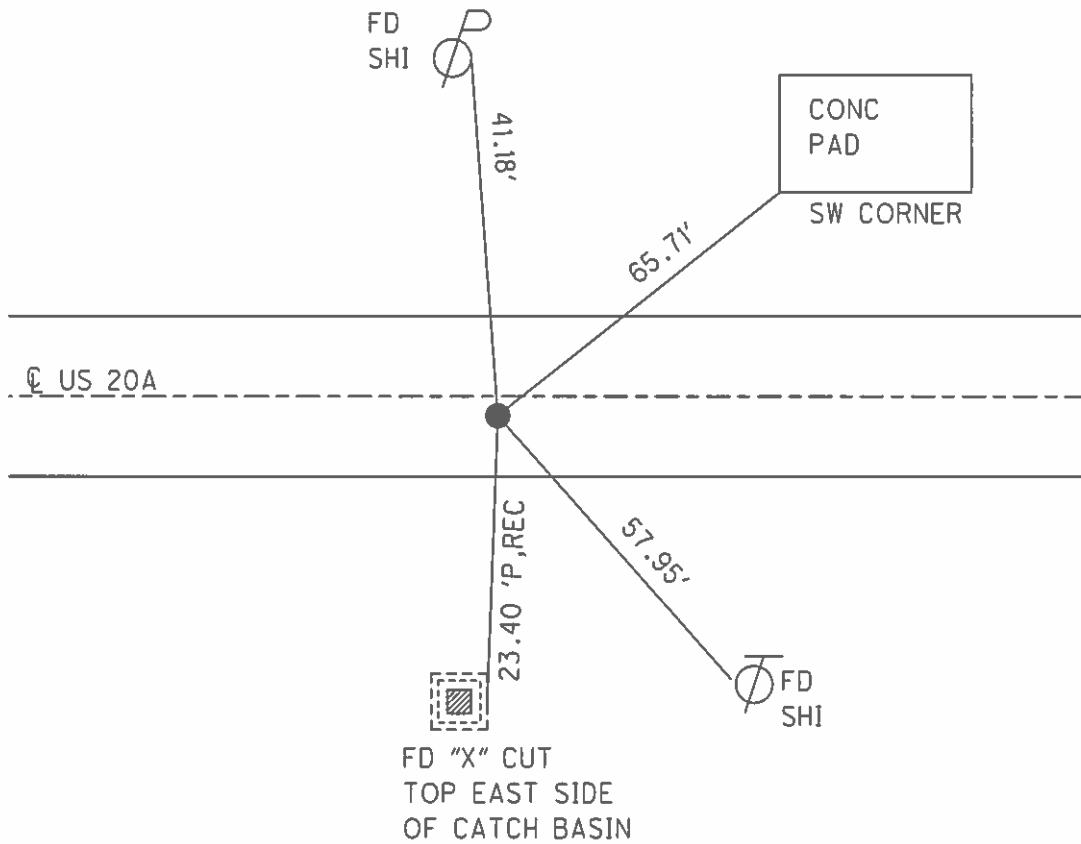
PERSONNEL \_\_\_\_\_ REFERENCE NO. 14 SHEET 27 OF 61  
 NOTES MICHALAK DATE 6/6/02 ROUTE US 20A  
 H.C. ROUSOS WEATHER RAIN COUNTY FULTON  
 R.C. MALINSKY TEMP. 65° TOWNSHIP GERMAN  
 \_\_\_\_\_ SECTION 11  
 \_\_\_\_\_ T 7 N R 5 E

TYPE MONUMENT P.K./WASHER  
 ON SURFACE - ~~BELOW~~ ON \_\_\_\_\_  
~~LEFT~~ - CL PAV'T - RIGHT 0.8'  
9.5' TO RT EDGE PAVEMENT  
 S.L.M. 349+86  
 GRID: NORTHING: \_\_\_\_\_ EASTING: \_\_\_\_\_



RECORD: OLD STA 349+89.31

SET MAG/WASHER  
 4/22/03, DCH



O.D.O.T. DISTRICT 2 SURVEY OFFICE

PERSONNEL

REFERENCE NO. 14

SHEET 10 OF 30

NOTES MICHALAK

DATE 6-6-02

ROUTE U.S. 20-A

H.C. ROUSOS

WEATHER RAIN

COUNTY FULTON

R.C. MALINSKY

TEMP. 65°

TOWNSHIP GERMAN

SECTION 11

T 7 N R 5 E

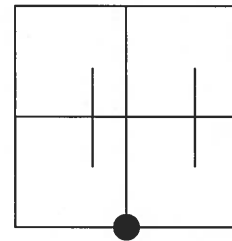
TYPE MONUMENT PK NAIL & WASHER

ON SURFACE - ~~BELOW~~ YES

~~LEFT~~ - Q PAV'T - RIGHT 0.8'

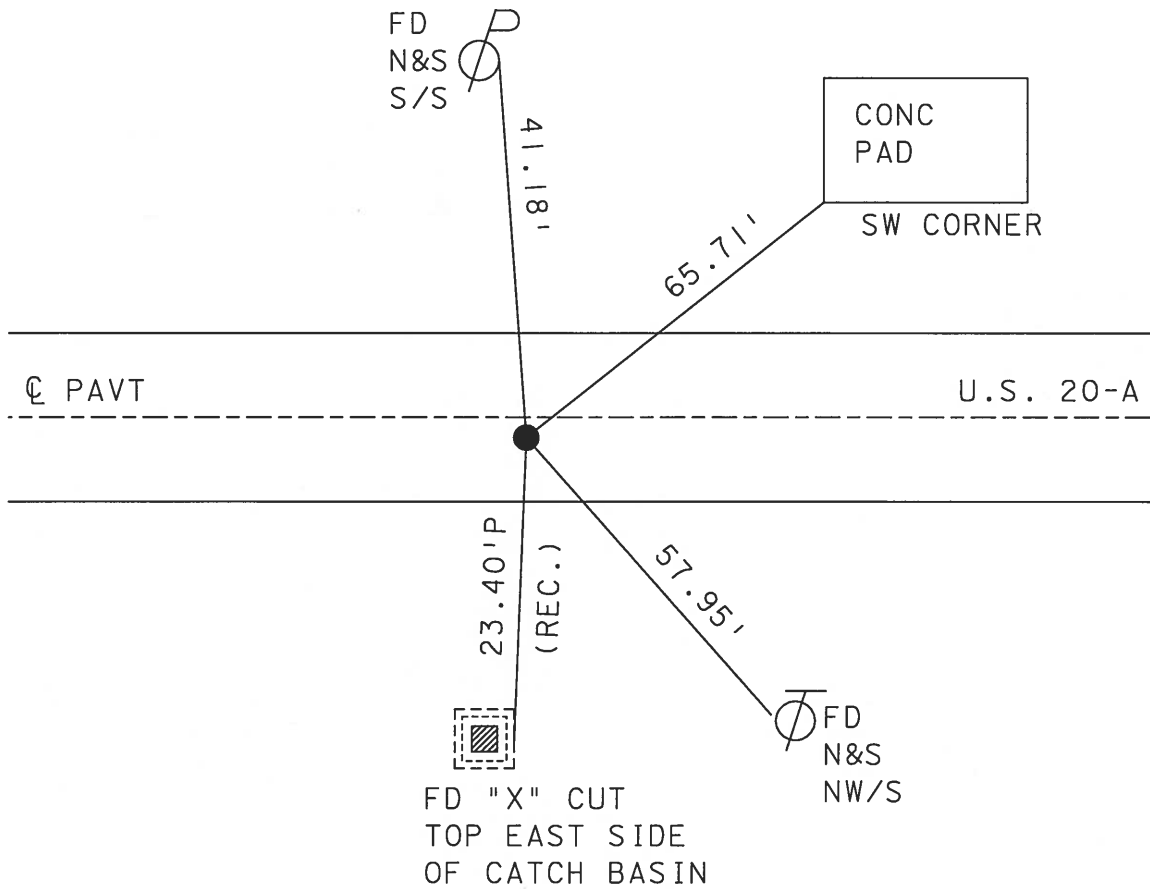
9.5 TO RT EDGE PAVEMENT

S.L.M. 349+86



RECORD: OLD STA 349+89.31

SET MAG NAIL & WASHER  
4-22-03  
DCH



# O.D.O.T. DISTRICT 2 SURVEY OFFICE

PERSONNEL \_\_\_\_\_

REFERENCE NO. 14

SHEET 10 OF 26

NOTES Hoffman

H.C. Loehrike

DATE 8-9-89

ROUTE US 20-A

R.C. \_\_\_\_\_

WEATHER CLEAR

COUNTY FULTON

\_\_\_\_\_

TEMP. 80°

TOWNSHIP GERMAN

\_\_\_\_\_

SECTION 11

T 7 N R 5 E

TYPE MONUMENT MOBORA MONUMENT

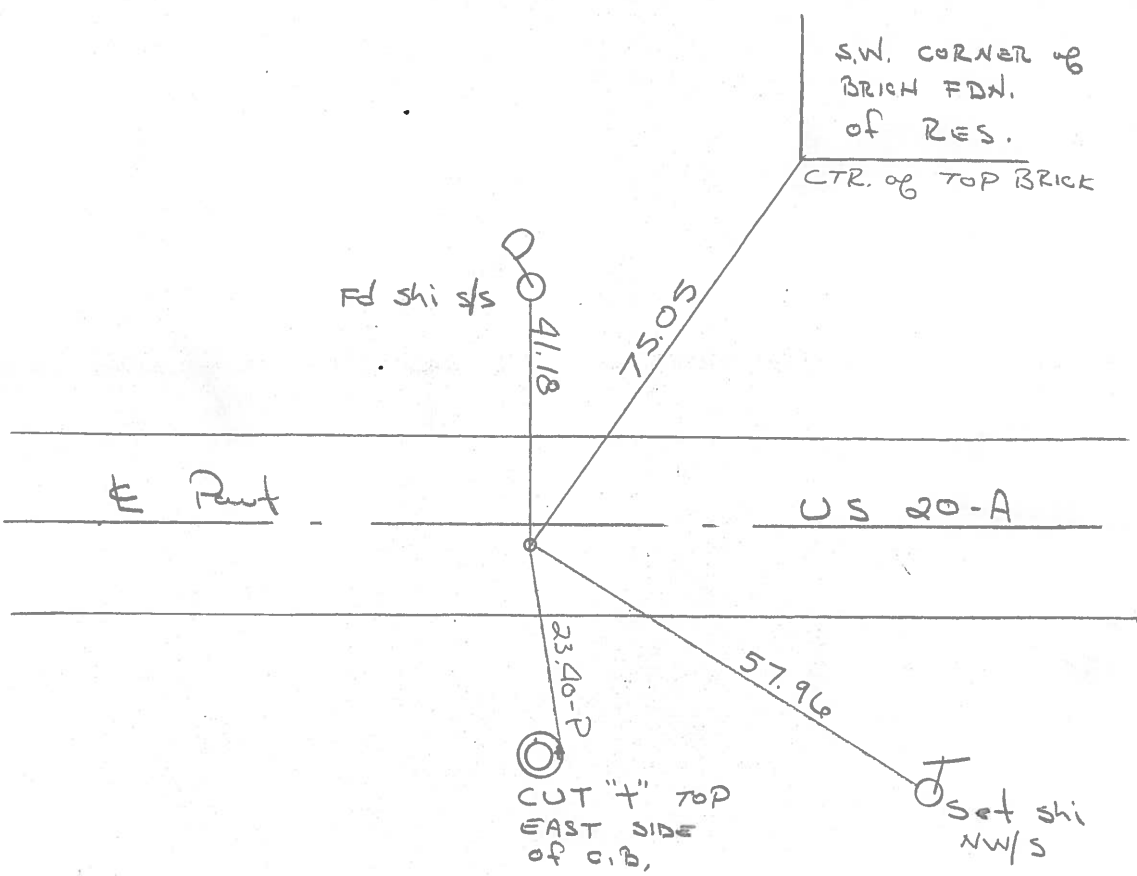
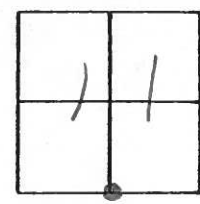
~~ON SURFACE~~ - BELOW 1 1/2"

Set P.K. / WASHER  
8-28-89 SWA

~~LEFT~~ - & PAV'T. - RIGHT 0.8

9.5 TO R+ EDGE PAVEMENT

S.L.M. 349+68



Records: OLD sta. 349+89.31

OD.O.T. DISTRICT 2 SURVEY OFFICE

Sht. 10 of

County Fulton S.R. US-20-A

Date 27 June 79

Township German

Weather Warms

Section 11

Temp. 81°

T N, R E

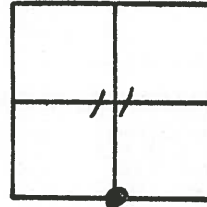
Personnel L. Stone

R. Michalak

P. Neuser

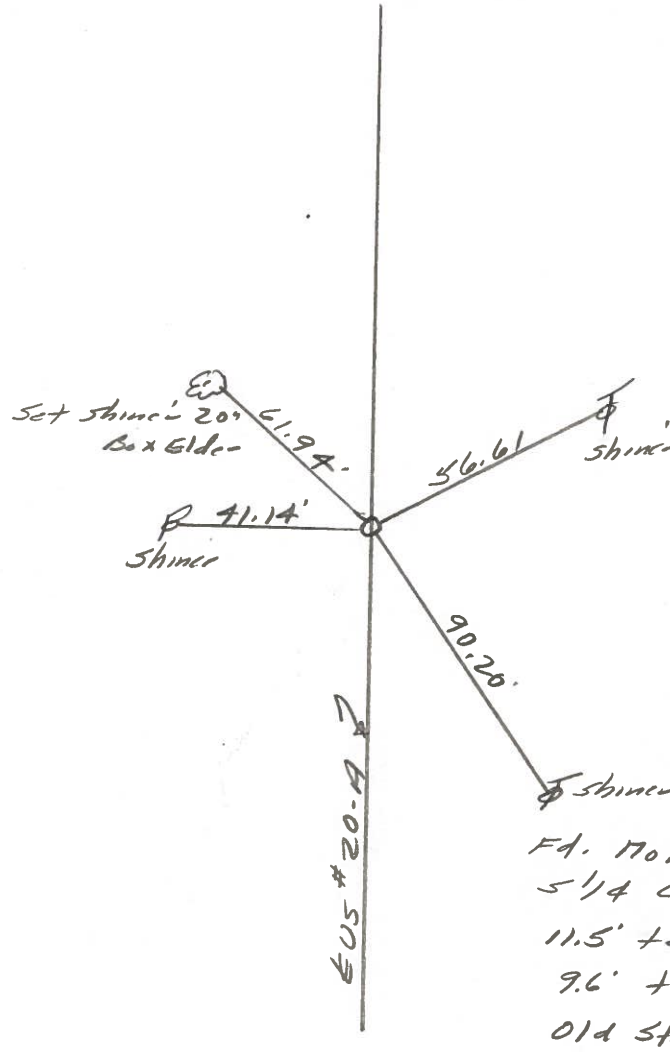
D. Curtis

D. Granatg



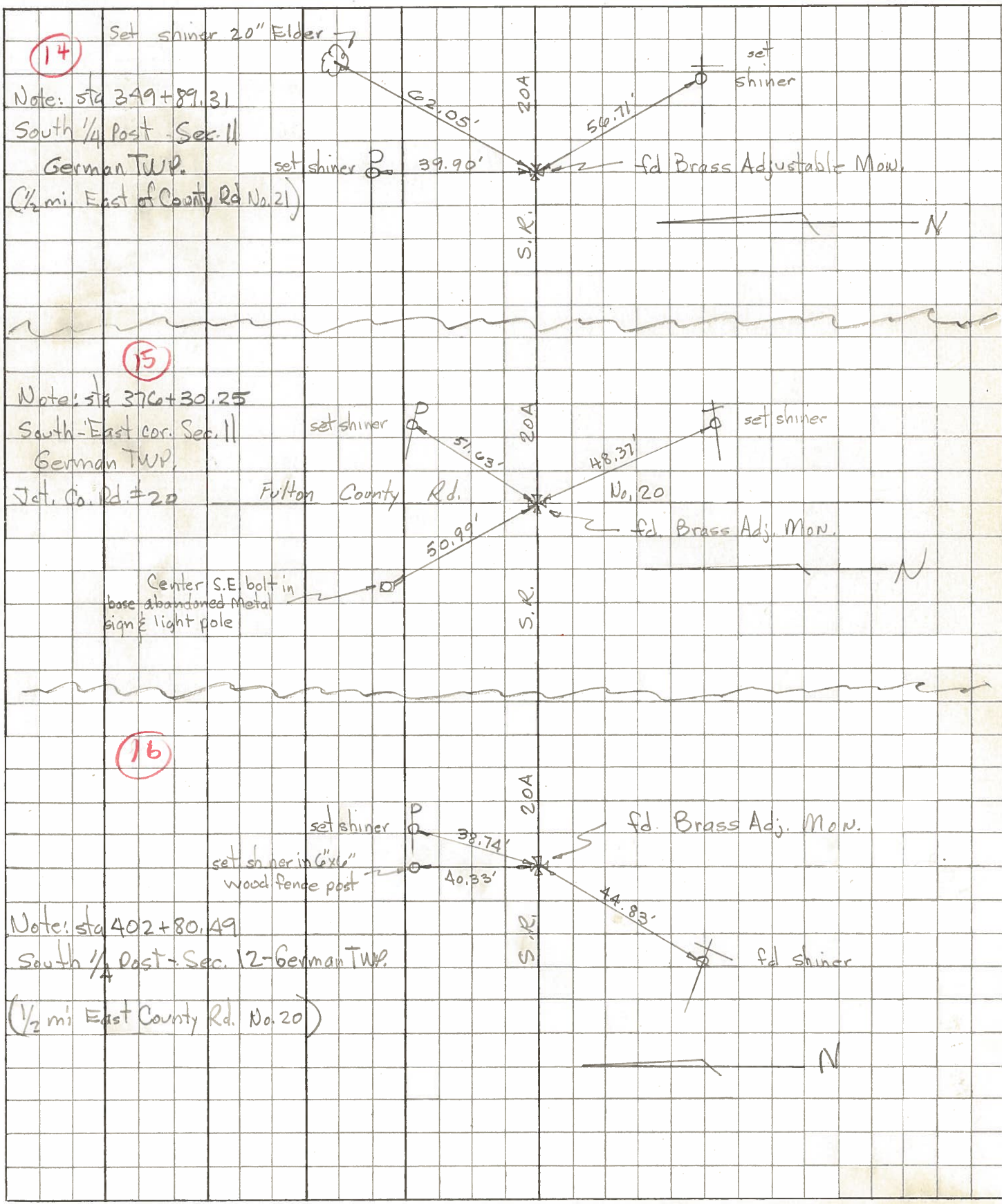
REF. No. **14**

SLM BLKTOP STA. 349+73



PERSONNEL	TITLE	PERSONNEL	TITLE	COUNTY	Fulton	DATE	MAR. 15, 1973
Tomsic				S. R.	U.S. 20A	WEATHER	
Neuser				SEC.	German	TEMP.	
Vanzo							
Branata							

DESCRIPTION \_\_\_\_\_ LEFT \_\_\_\_\_ CENTER LINE \_\_\_\_\_ RIGHT \_\_\_\_\_ JOB NO. \_\_\_\_\_



PERSONNEL	TITLE	PERSONNEL	TITLE
Beach			
Armbruster			
Knappe			

COUNTY Fulton DATE 11 July 58  
 S. R. US-20A WEATHER \_\_\_\_\_  
 SEC. 4.13 TEMP. \_\_\_\_\_

DESCRIPTION \_\_\_\_\_ LEFT \_\_\_\_\_ CENTER LINE \_\_\_\_\_ RIGHT \_\_\_\_\_ JOB NO. 02276

