

O.D.O.T. DISTRICT 2 SURVEY OFFICE (USE ONLY)

PERSONNEL

REFERENCE NO. 17 C

SHEET 35 OF 62

NOTES MICHALAK

DATE 6/6/02

ROUTE US 20A

H.C. HOMAN

WEATHER SUNNY

COUNTY FULTON

R.C. MALINSKY

TEMP. 56°

TOWNSHIP CLINTON

SECTION 7

DWG BY RHOADES

PID 92126

T 7 N R 6 E

TYPE MONUMENT P.K./WASHER

ON SURFACE - BELOW ON

OFFSET $\text{\textcircled{C}}$ PAVEMENT 2.5' LT : RT

8.2' TO LT EDGE PAVEMENT

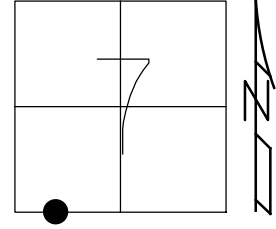
STATION: 434+24.16

HORZ.DATUM: NAD83 2011

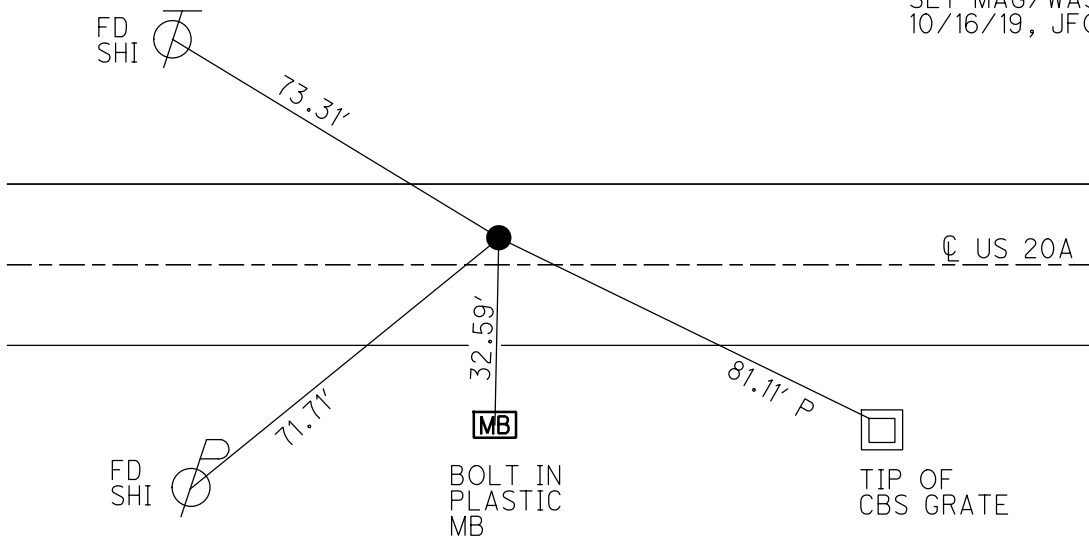
GEOID: 2012A

GRID: NORTHING: 699080.005

EASTING: 1495751.606



RECORD:
 STA. 434+29.91
 FD P.K./WASHER
 6/6/02, DCH
 SET MAG/WASHER
 4/26/03, DCH
 FD MAG/WASHER
 REFC17
 9/29/14, EBW
 7/12/19, JLL
 SET MAG/WASHER
 10/16/19, JFO



O.D.O.T. DISTRICT 2 SURVEY OFFICE (USE ONLY)

PERSONNEL

REFERENCE NO.

17 A

SHEET

34

OF

61

NOTES

MICHALAK

DATE

6/6/02

ROUTE

US 20A

H.C.

HOMAN

WEATHER

SUNNY

COUNTY

FULTON

R.C.

MALINSKY

TEMP.

56°

TOWNSHIP

CLINTON

SECTION

7

T 7 N R 6 E

TYPE MONUMENT P.K./WASHER

ON SURFACE - ~~BELOW~~ ON

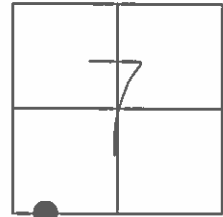
LEFT - ☉ PAV'T - ~~RIGHT~~ 2.5'

8.2' TO LT EDGE PAVEMENT

S.L.M. 434+22

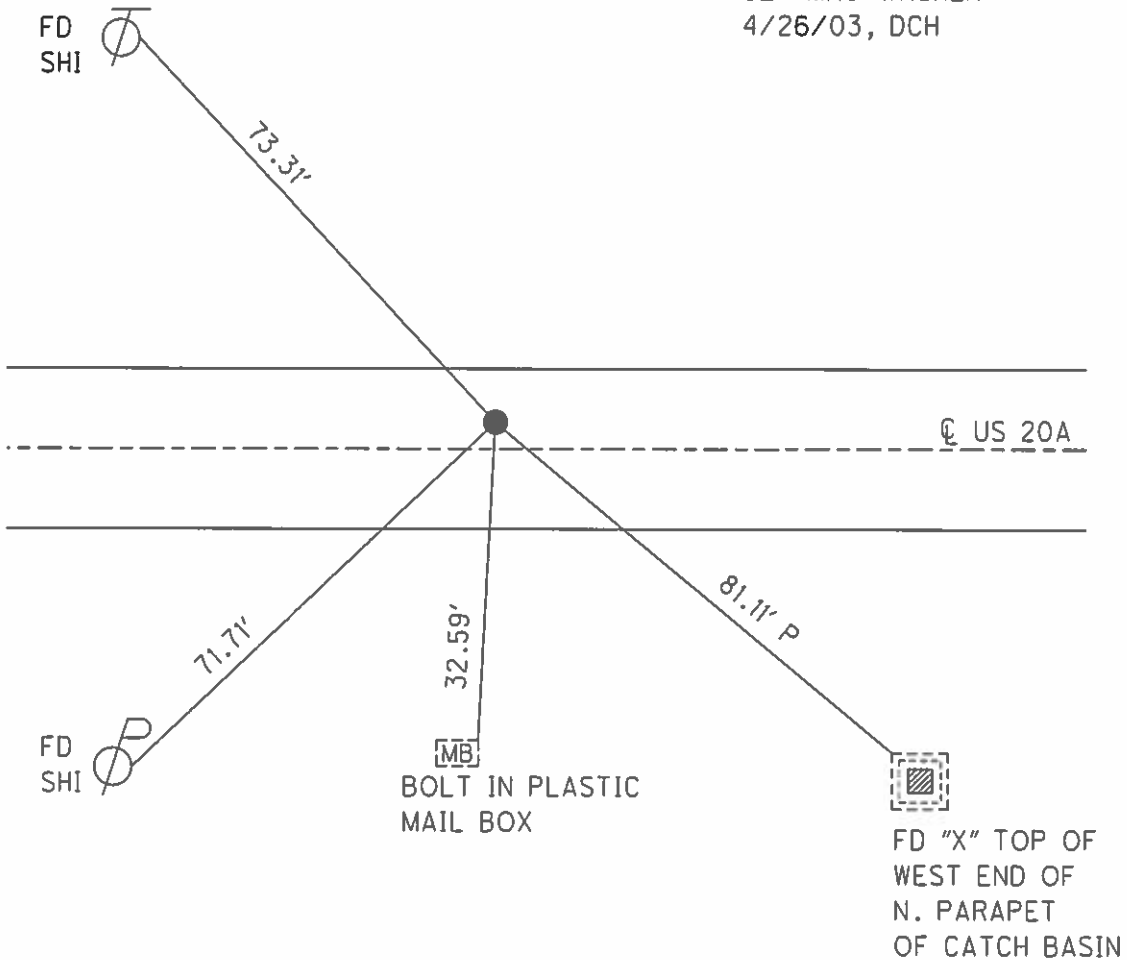
GRID: NORTHING: _____

EASTING: _____



RECORD: OLD STA. 434+29.91

SET MAG/WASHER
4/26/03, DCH



O.D.O.T. DISTRICT 2 SURVEY OFFICE

PERSONNEL

REFERENCE NO. 17A

SHEET 15 OF 30

NOTES MICHALAK

DATE 6-6-02

ROUTE U.S. 20-A

H.C. HOMAN

WEATHER SUNNY

COUNTY FULTON

R.C. MALINSKY

TEMP. 56°

TOWNSHIP CLINTON

SECTION 7

T 7 N R 6 E

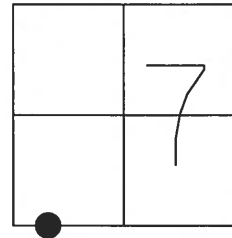
TYPE MONUMENT PK NAIL & WASHER

ON SURFACE - ~~BELOW~~ YES

LEFT - ~~Q~~ PAV'T - ~~RIGHT~~ 2.5'

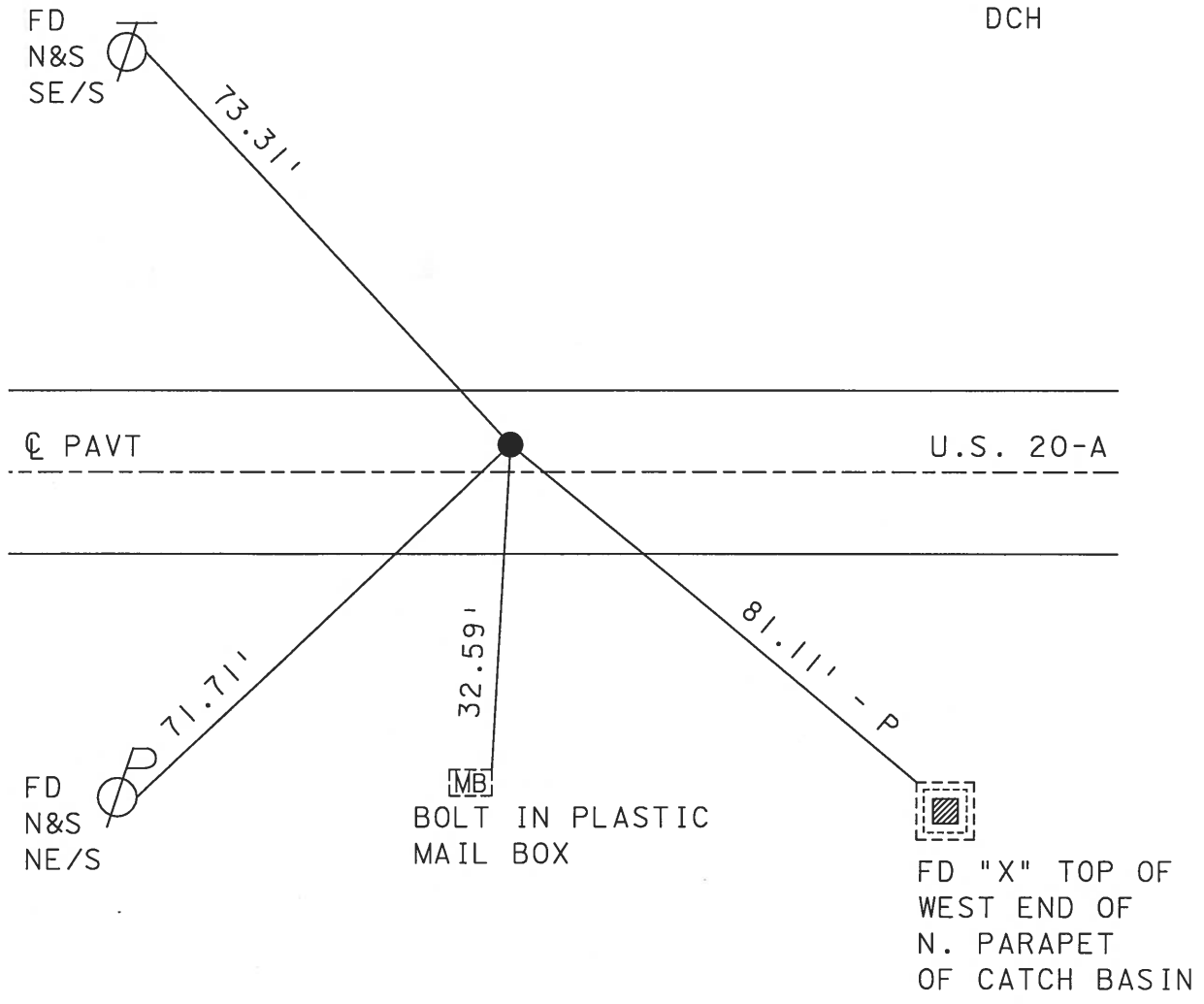
8.2' TO LT. EDGE PAVEMENT

S.L.M. 434+22



RECORD: OLD STA. 434+29.91

SET MAG NAIL
& WASHER
4-26-03
DCH



O.D.O.T. DISTRICT 2 SURVEY OFFICE

PERSONNEL _____

REFERENCE NO. 17-A

SHEET 15 OF 26

NOTES Hoffman

H.C. LOZARKS

R.C. _____

DATE 8-10-89

WEATHER CLEAR

TEMP. 70°

ROUTE US 20-A

COUNTY FULTON

TOWNSHIP CLINTON

SECTION 7

T 7 N R 6 E

TYPE MONUMENT P.K. Nail

Set P.K./WASHER

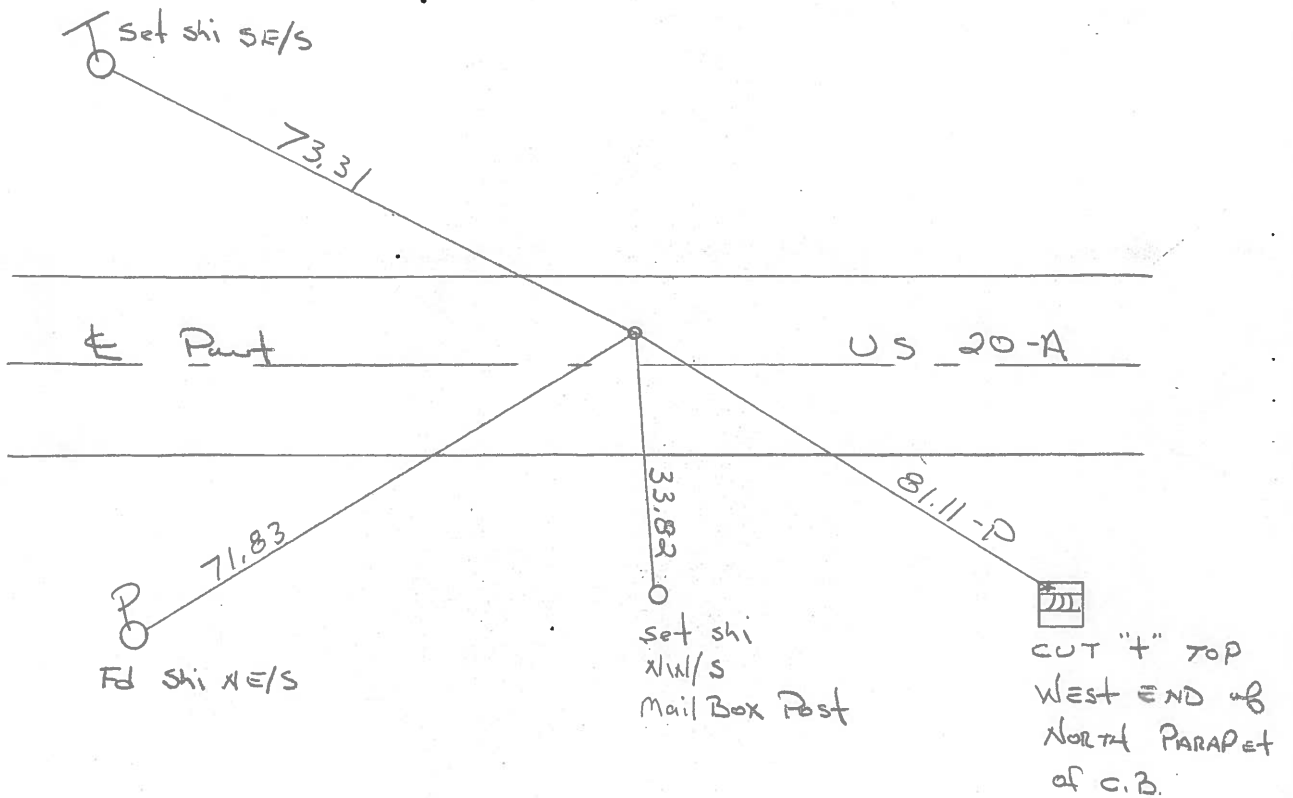
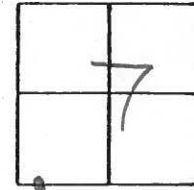
ON SURFACE - ~~BELOW~~ YES

9-15-89 SWK

LEFT- & PAV'T. - ~~RIGHT~~ 2.5

8.2 TO Lt. EDGE PAVEMENT

S.L.M. 434 + 04



RECORD: O&D Sta. 434 + 29.91

O.D.O.T. DISTRICT 2 SURVEY OFFICE

Sht. 15 of

County Fulton S.R. 20-A

Township Clinton

Section 7

T_N, R_E

Personnel L. Stone

R. Michalak

P. Neuser

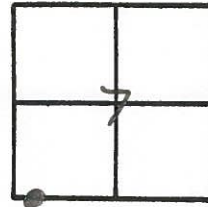
D. Curtis

D. Granata

Date 29 June 79

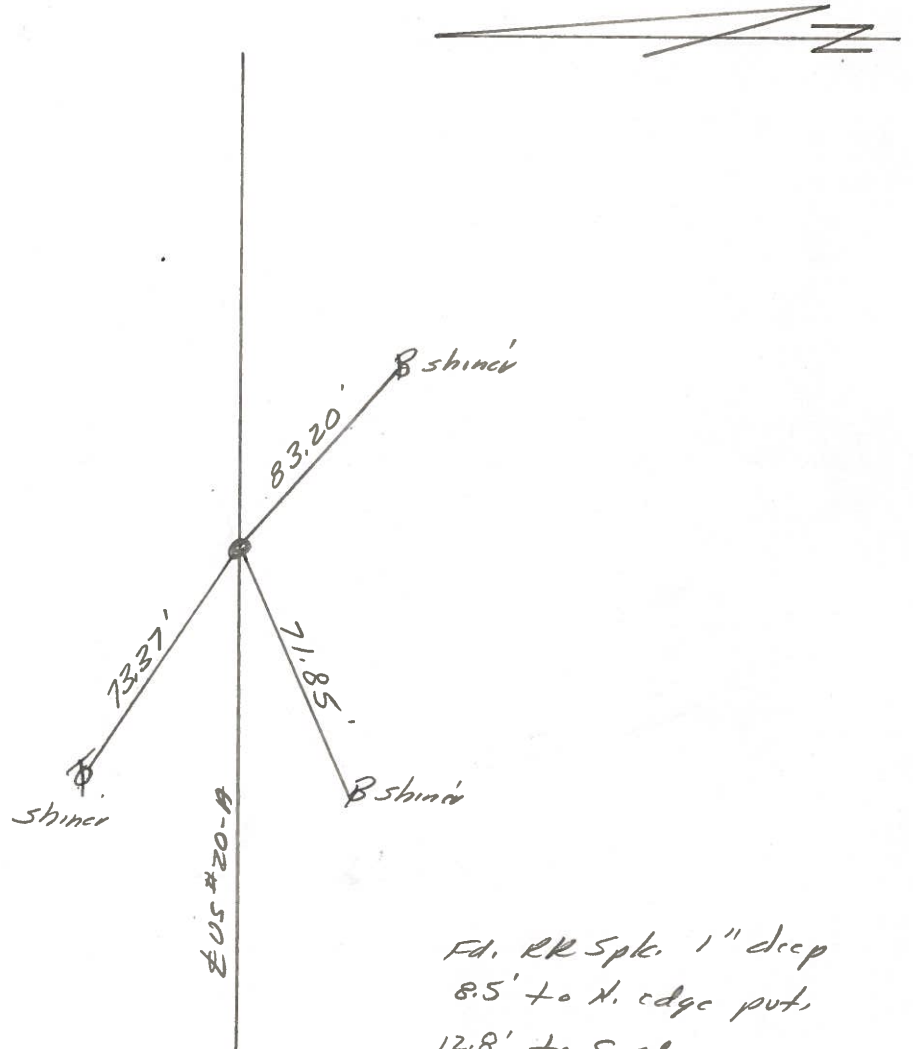
Weather Cloudy

Temp. 70°



REF No. **17-A**

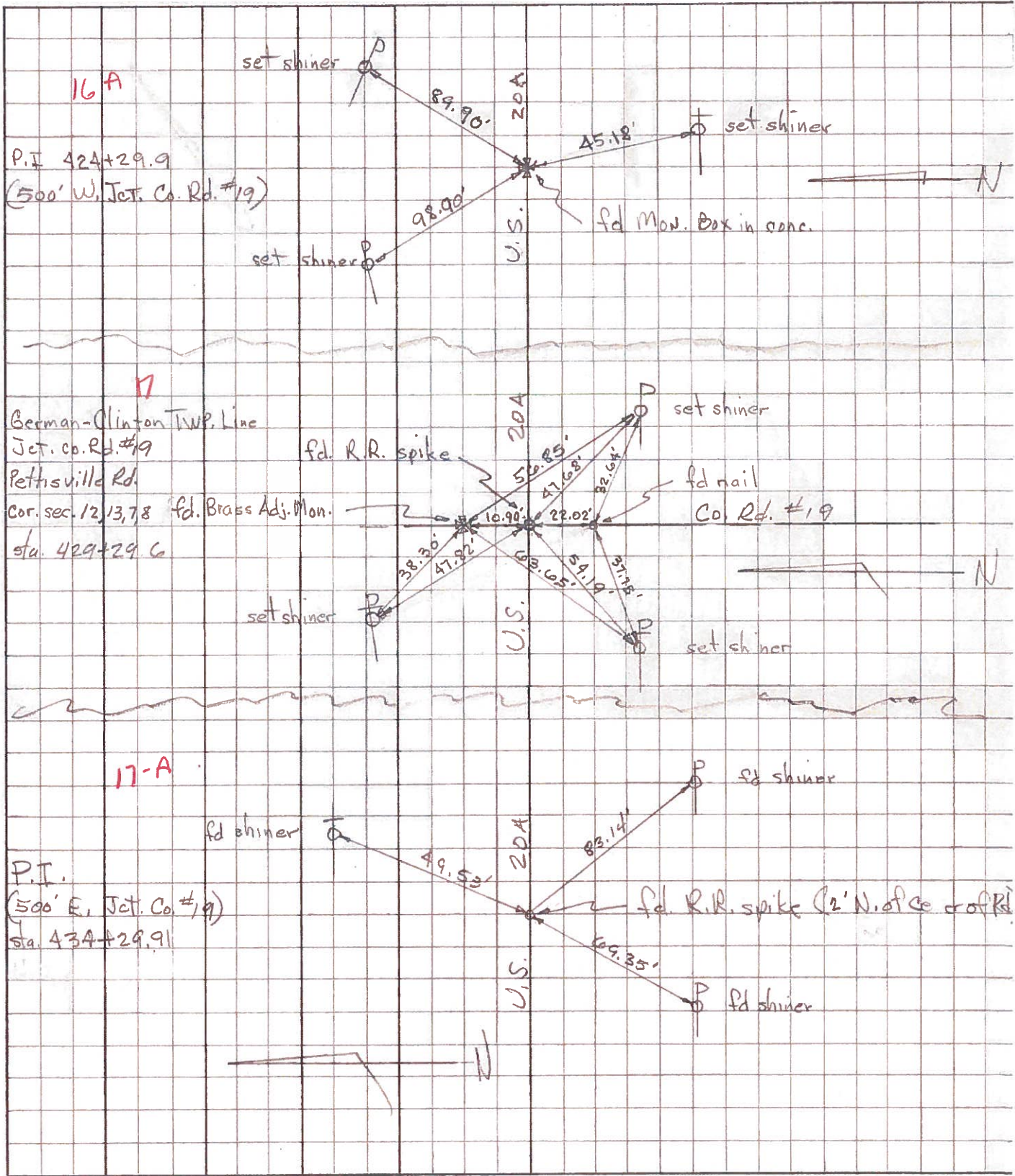
SLM BLETOP STA. 434+15



Fd. RR Spk. 1" deep
8.5' to N. edge put.
12.8' to S. edge put.
500' E. Co. Rd. #19
Old Sta. 434+29.91

PERSONNEL	TITLE	PERSONNEL	TITLE	COUNTY	DATE	WEATHER	TEMP.
Toungic				Fulton	MAR. 15, 1973		
Nesser				U.S. 20A			
Vanyo							
Granata							

DESCRIPTION _____ LEFT _____ CENTER LINE _____ RIGHT _____ JOB NO. _____



PERSONNEL	TITLE	PERSONNEL	TITLE

COUNTY Fulton

DATE OK-1-24-58

S. R. #20-Alt.

WEATHER

SEC.

TEMP.

DESCRIPTION

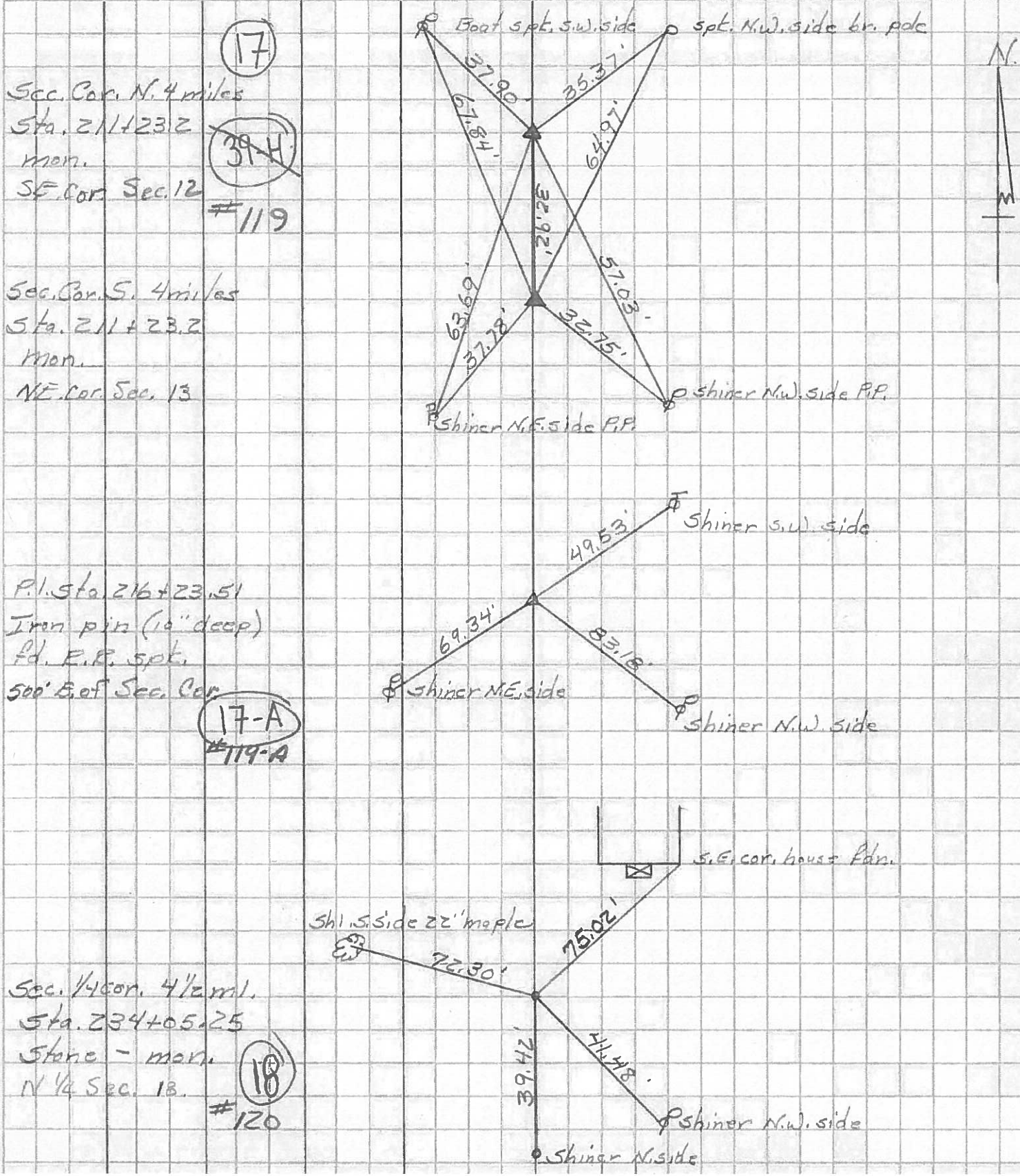
CLINTON TWP.

JOB NO.

LEFT

CENTER LINE

RIGHT



Sec. Cor. N. 4 miles
 Sta. 211+23.2
 Mon.
 SE Cor. Sec. 12

(17)
~~(39-H)~~
 #119

Sec. Cor. S. 4 miles
 Sta. 211+23.2
 Mon.
 NE Cor. Sec. 13

P.I. Sta. 216+23.51
 Iron pin (10" deep)
 fd. E.P. spt.
 500' E. of Sec. Cor.

(17-A)
 #119-A

Sec. 1/4 cor. 4 1/2 ml.
 Sta. 234+05.25
 Stone - mark
 N 1/4 Sec. 13.

(18)
 #120