

O.D.O.T. DISTRICT 2 SURVEY OFFICE (USE ONLY)

PERSONNEL

REFERENCE NO. 19 A

SHEET 38 OF 62

NOTES RHOADES

DATE 7/18/18

ROUTE US 20A

H.C. LEU

WEATHER SUNNY

COUNTY FULTON

R.C. MALINSKY

TEMP. 70°

TOWNSHIP CLINTON

HAGEMEYER

SECTION 7

DWG BY NASON

PID 101232

T 7 N R 6 E

TYPE MONUMENT P.K./WASHER

ON SURFACE - ~~BELOW~~ ON

OFFSET 4' C PAVEMENT 4' LT : ~~RT~~

7' TO LT EDGE PAVEMENT

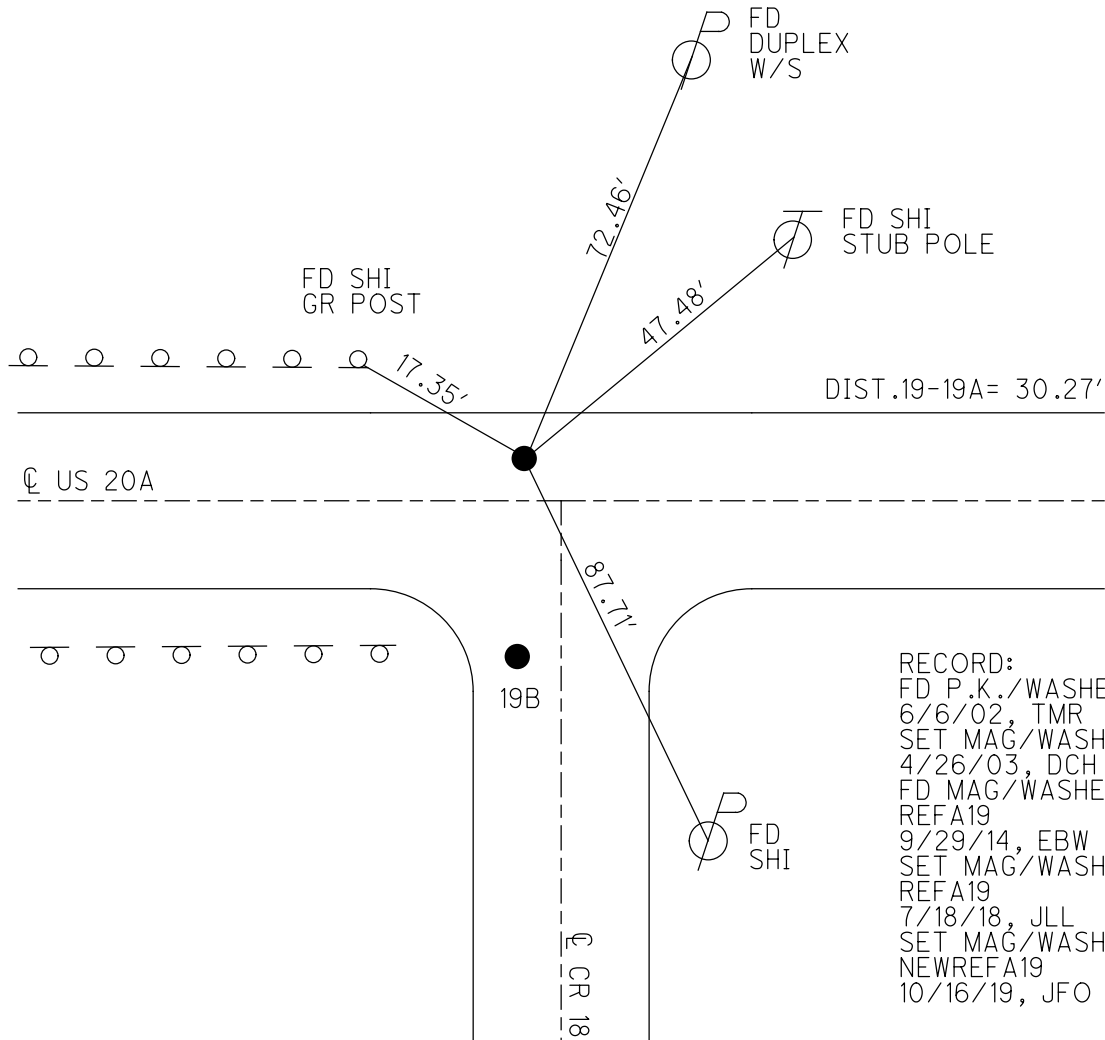
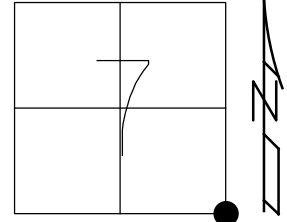
STATION: 478+63.48

HORZ.DATUM: NAD83(2011)

GEOID: 2012A

GRID: NORTHING: 699071.895

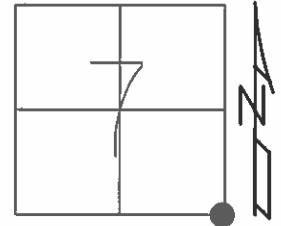
EASTING: 1500190.047



O.D.O.T. DISTRICT 2 SURVEY OFFICE (USE ONLY)

PERSONNEL _____ REFERENCE NO. 19 SHEET 37 OF 61
 NOTES MICHALAK DATE 6/6/02 ROUTE US 20A
 H.C. ROUSOS WEATHER CLOUDY COUNTY FULTON
 R.C. MALINSKY TEMP. 65° TOWNSHIP CLINTON
 _____ SECTION 7
 _____ T 7 N R 6 E

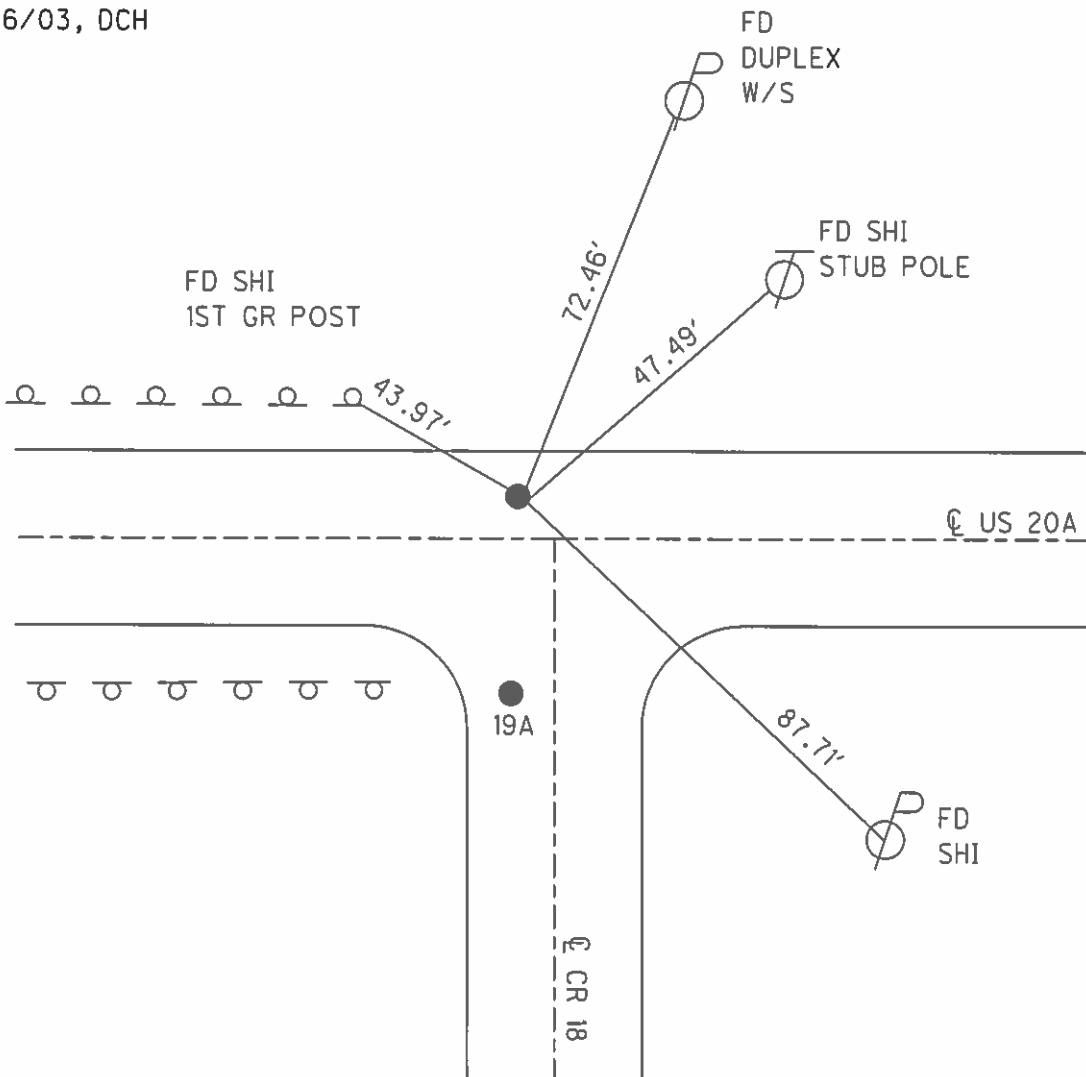
TYPE MONUMENT P.K./WASHER
 ON SURFACE - ~~BELOW~~ ON
 LEFT - ☉ PAV'T - ~~RIGHT~~ 4'
7' TOLT EDGE PAVEMENT
 S.L.M. 478+61



GRID: NORTHING: _____ EASTING: _____

SET MAG/WASHER
 4/26/03, DCH

DIST. 19-19A = 30.32'



O.D.O.T. DISTRICT 2 SURVEY OFFICE

PERSONNEL

REFERENCE NO. 19

SHEET 18 OF 30

NOTES MICHALAK

DATE 6-6-02

ROUTE U.S. 20-A

H.C. ROUSOS

WEATHER CLOUDY

COUNTY FULTON

R.C. MALINSKY

TEMP. 65°

TOWNSHIP CLINTON

SECTION 7

T 7 N R 6 E

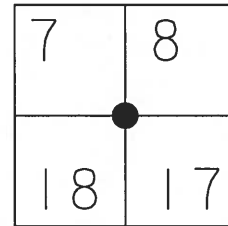
TYPE MONUMENT PK NAIL & WASHER

ON SURFACE - ~~BELOW~~ YES

LEFT - ☉ PAVT - ~~RIGHT~~ 4'

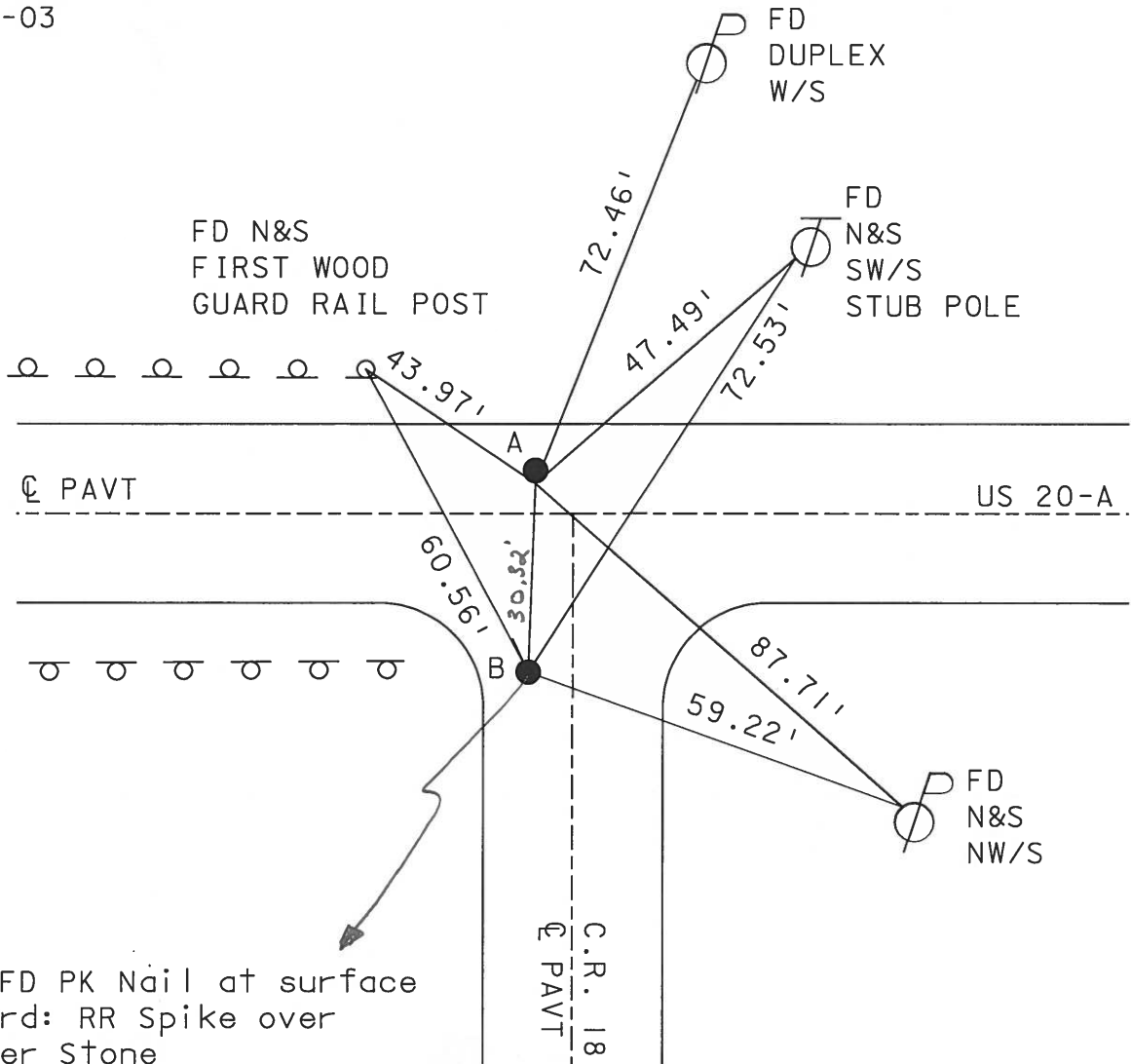
7' TO LT EDGE PAVEMENT 9.4' +/- W. OF

S.L.M. 478+61 ☉ PAVT RD S



SET MAG NAILS
& WASHERS
4-26-03
DCH

DISTANCE BETWEEN A-B = 30.32'



"B" FD PK Nail at surface
Record: RR Spike over
Corner Stone

O.D.O.T. DISTRICT 2 SURVEY OFFICE

PERSONNEL _____

REFERENCE NO. 19

SHEET 18 OF 26

NOTES HOPFMAN

H.C. LOSHREE

R.C. _____

DATE 8-10-89

WEATHER CLEAR

TEMP. 75°

ROUTE US 20-A

COUNTY FULTON

TOWNSHIP CLINTON

SECTION 7

T 7 N R 6 E

TYPE MONUMENT P.K. NAIL

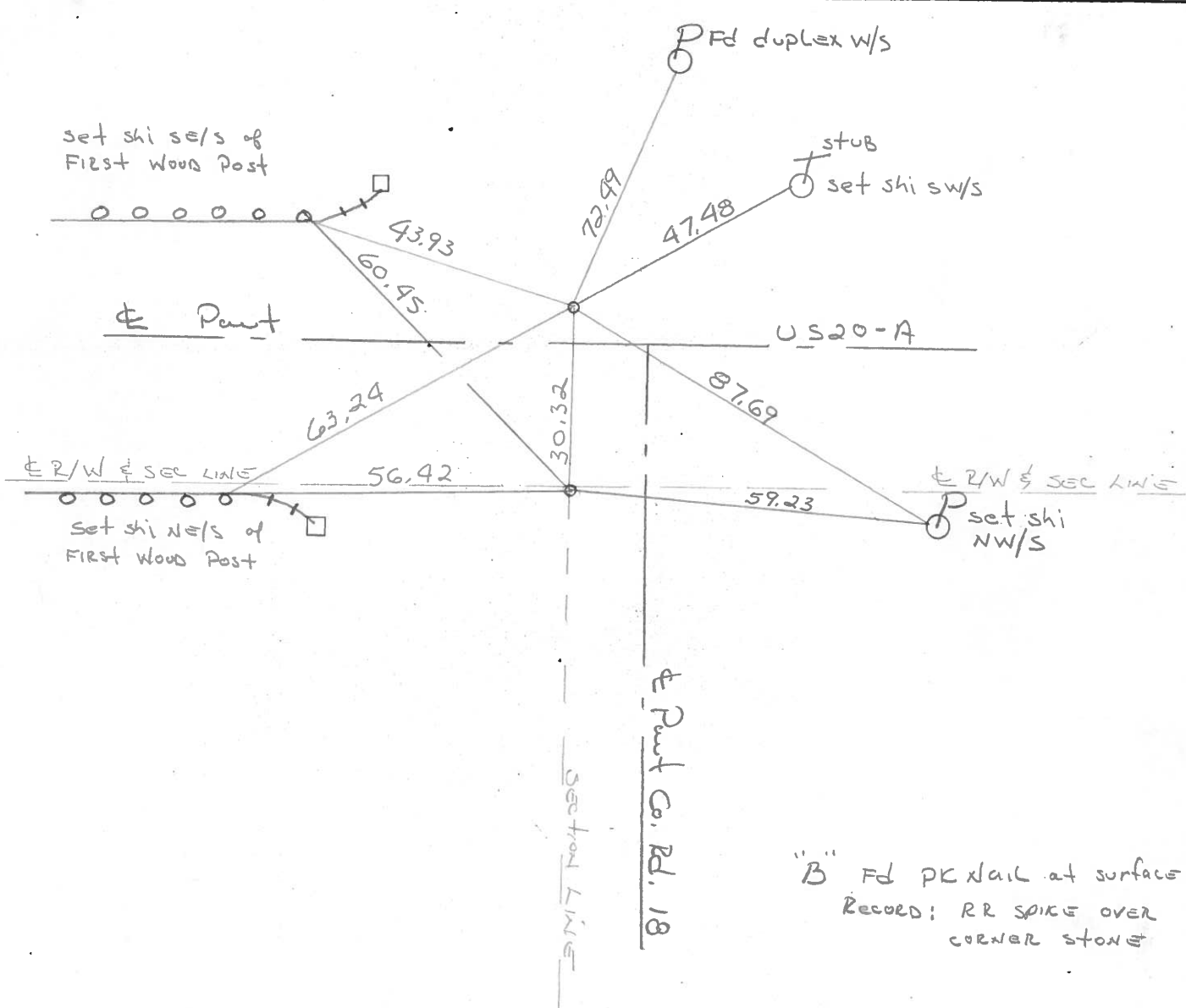
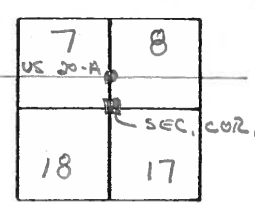
*Set P.K./WASHER
9-15-89 SWH*

ON SURFACE - BELOW YES

LEFT- & PAV'T. - RIGHT 4.1'

6.5 TO LT EDGE PAVEMENT *9.4' ± W. of
& Pavt ROAD SOUTH*

S.L.M. 478 + 43



County Fulton S.R. US#20-A

Date 21 Sept 84

Township Clinton

Weather Fair

Section 17

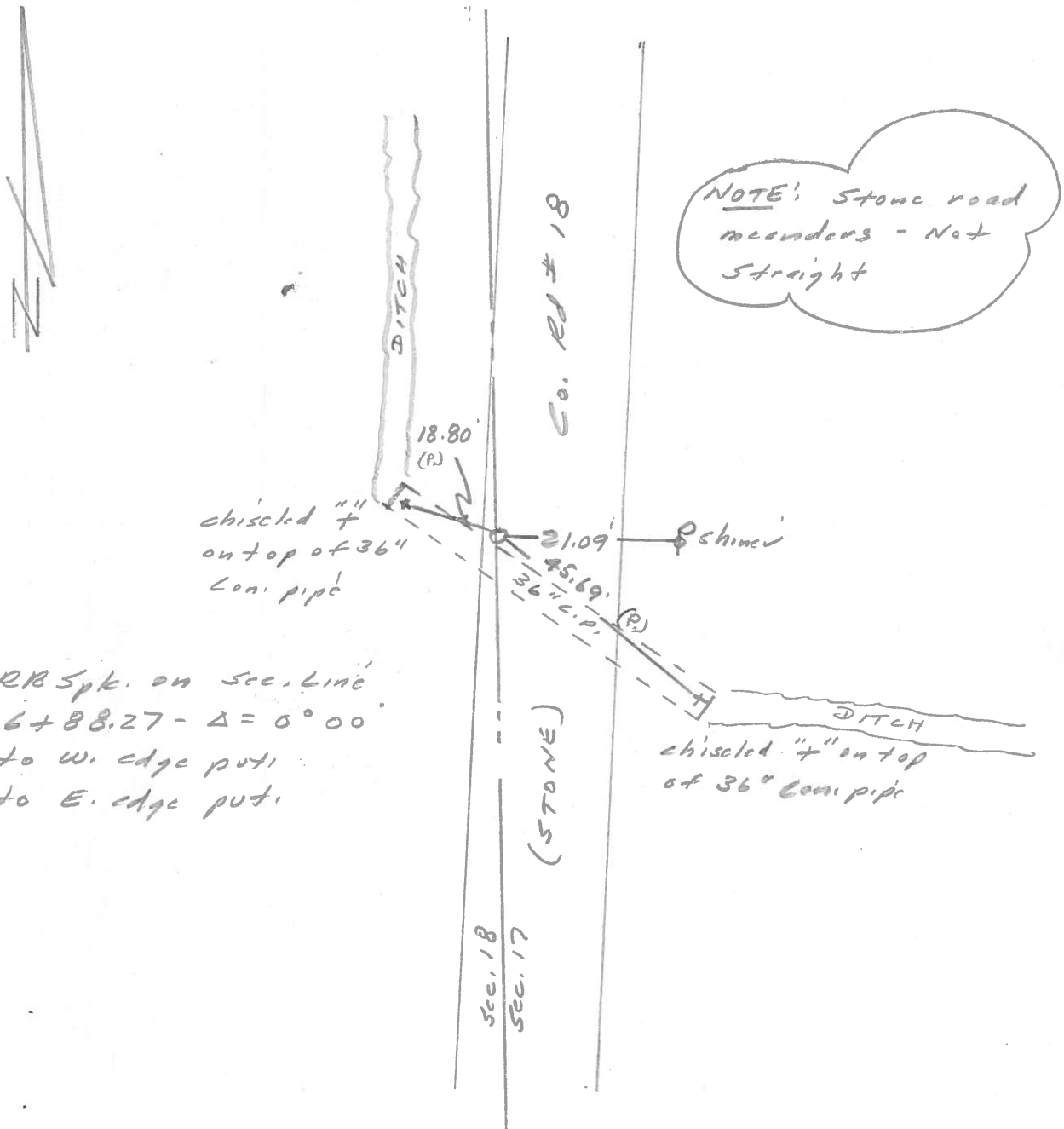
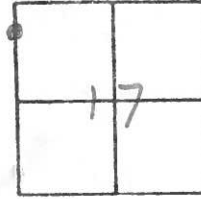
Temp. 65°

T N, R E

Personnel J. Stone

P. Neuser

D. Curtis



Set RB Spk. on sec. line
Sta. 6+88.27 - Δ = 0° 00'
2.5' to W. edge put
11.5' to E. edge put

NOTE: Stone road
meanders - Not
Straight

County Fulton S.R. US#20-A

Date 29 Aug. 84

Township Clinton

Weather Cloudy

Section 7-8-17-18

Temp. 80°

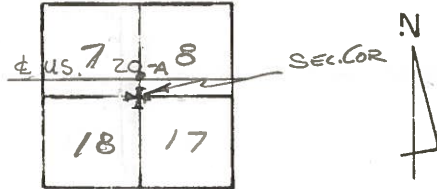
T N, R E

Personnel L. Stone

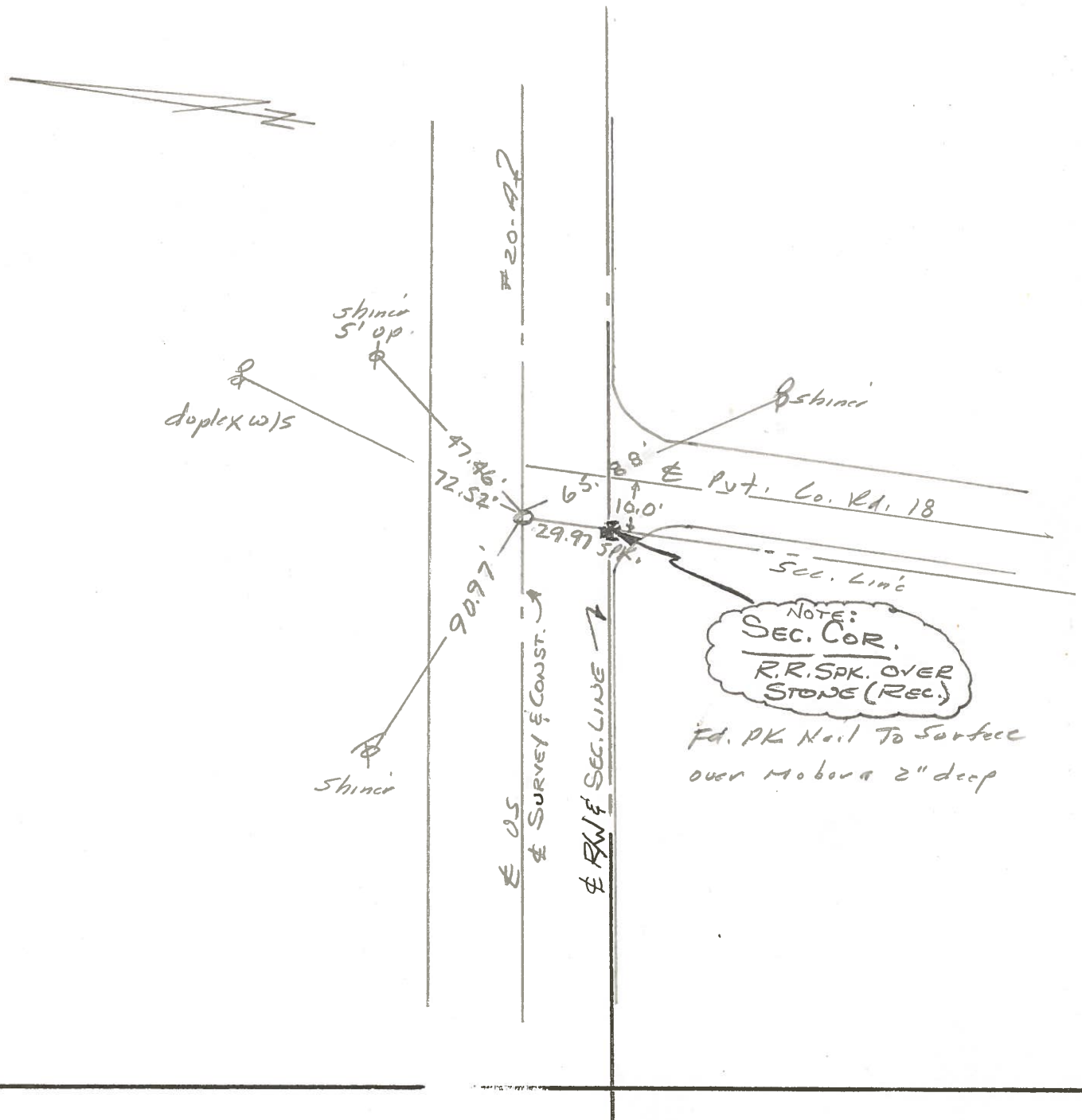
P. Neuser

R. Michalak

D. Curtis



REF. NO. 19



O.D.O.T. DISTRICT 2 SURVEY OFFICE

Sht. 18 of

County Fulton S.R. 05 20 A

Township Clinton

Section 7

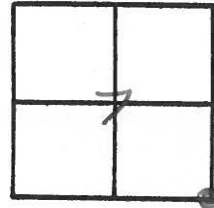
T N, R E

Personnel I. Stone
R. Michalak
P. Neuser
D. Curtis
D. Granatq

Date 29 June 79

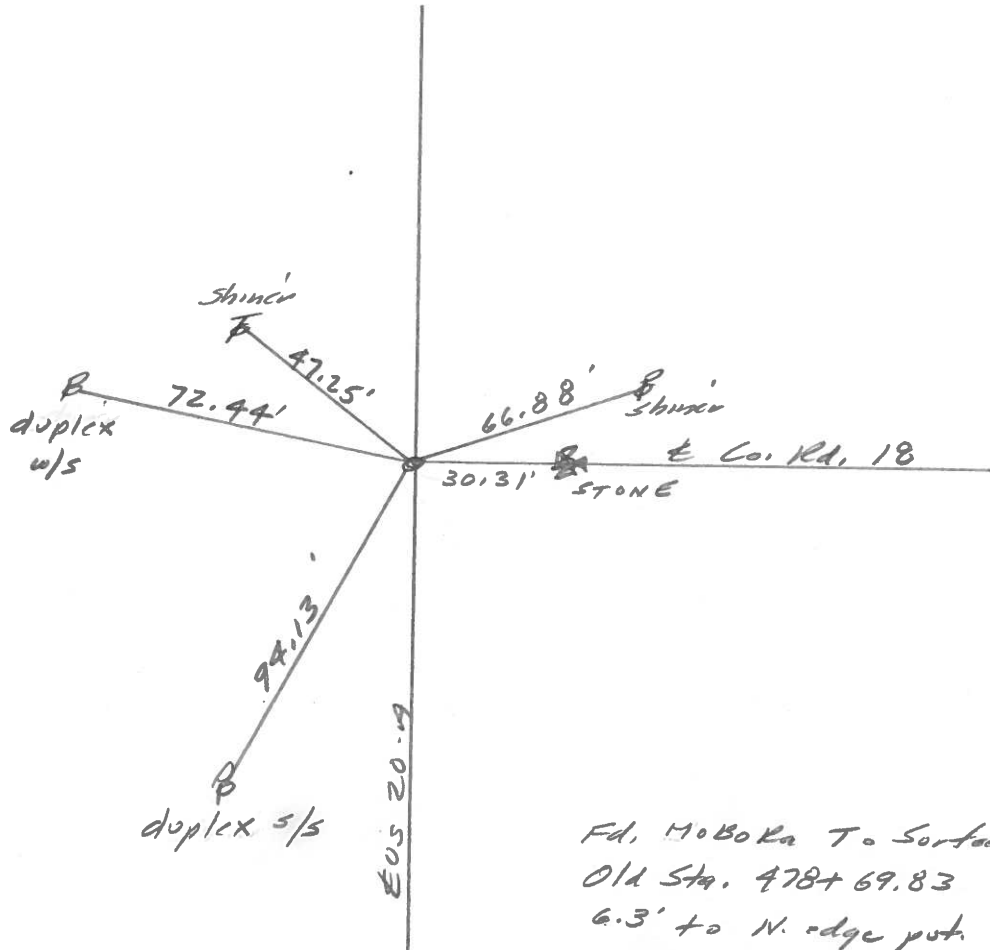
Weather Cloudy

Temp. 70°



REF No. 19

SLM OLKTOP STA. 478+57

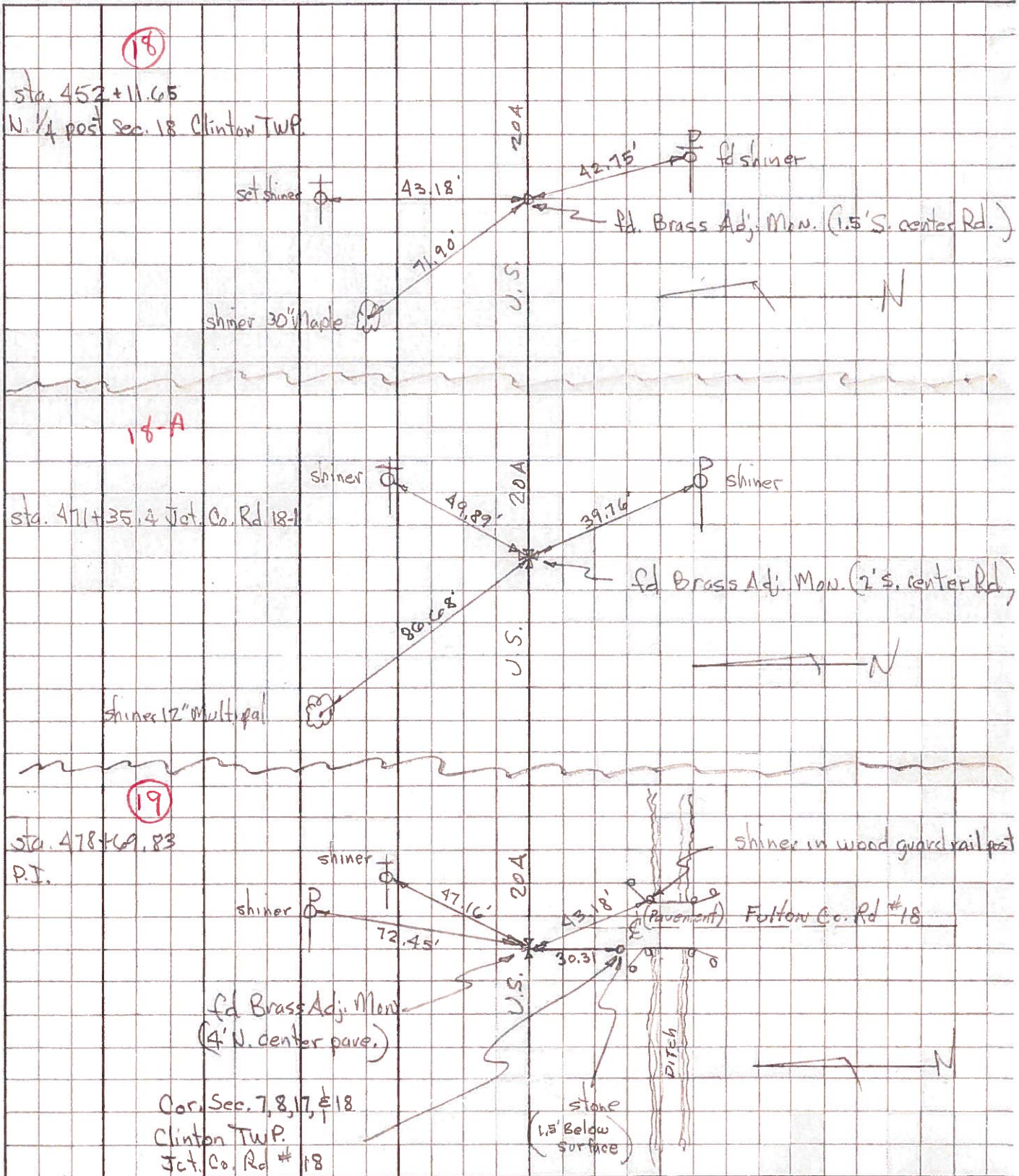


Fd. MOBORA T. Surface
Old Sta. 478+69.83
6.3' to N. edge put.
SEL. Cor. $\frac{7}{18} \div \frac{8}{17} = \frac{STONE}{MON}$
1.5' deep

PERSONNEL	TITLE	PERSONNEL	TITLE
Tomasic			
Nauser			
Vanyo			
Granata			

COUNTY Fulton DATE MAR. 15, 1973
 S. R. U.S. 20A WEATHER _____
 SEC. CLINTON TEMP. _____

DESCRIPTION _____ LEFT _____ CENTER LINE _____ RIGHT _____ JOB NO. _____



PERSONNEL TITLE PERSONNEL TITLE

COUNTY Fulton

DATE OK-1-27-58

S. R. # 20-1A4

WEATHER

SEC.

TEMP.

DESCRIPTION

CLINTON TWP.

JOB NO.

LEFT

CENTER LINE

RIGHT

Twp Rds # 37
P.I. Sta. 258+29
1 1/2" pipe - mon.
Tedrow - Moreau Rd.

18-A

36" oak
36" oak

#120-A

Edge stop sign

58.09'

49.84'

39.75'

J Shiner

J Shiner



P.I. Sta. 260+63.43
(5 mi.)
1 1/2" Gas pipe 30' N. of
Sec. Cor. - mon. NE Cor. Sec. #18

#121

19

near side 2"
Gas pipe on end
S.W. wing of W. wall
of culvert

47.42'

A

54.18'

68.53'

J spk. W. side

Top ctr. U.S.G.S.

Sec. Cor.
Sta. 260+63.43 (5 mi.)
1 1/4" Gas pipe over stone
NE. Cor. Sec. #18

B

near side
2" 6 sp pipe fast
on S. end S.W. wing
of W. wall culvert

72.73'

24.70'

45.65'

Top ctr. U.S.G.S.

(Did not find)
(1-27-58)