

O.D.O.T. DISTRICT 2 SURVEY OFFICE (USE ONLY)

PERSONNEL

REFERENCE NO. 19 B

SHEET 39 OF 62

NOTES RHOADES
 H.C. LEU
 R.C. MALINSKY
HAGEMEYER

DATE 7/18/18
 WEATHER SUNNY
 TEMP. 70°

ROUTE US 20A
 COUNTY FULTON
 TOWNSHIP CLINTON
 SECTION 7

DWG BY NASON PID 101232

T 7 N R 6 E

TYPE MONUMENT P.K./WASHER

ON SURFACE - ~~BELOW~~ ON

OFFSET C PAVEMENT 9.4' ~~LT~~ : RT

- TO - EDGE PAVEMENT

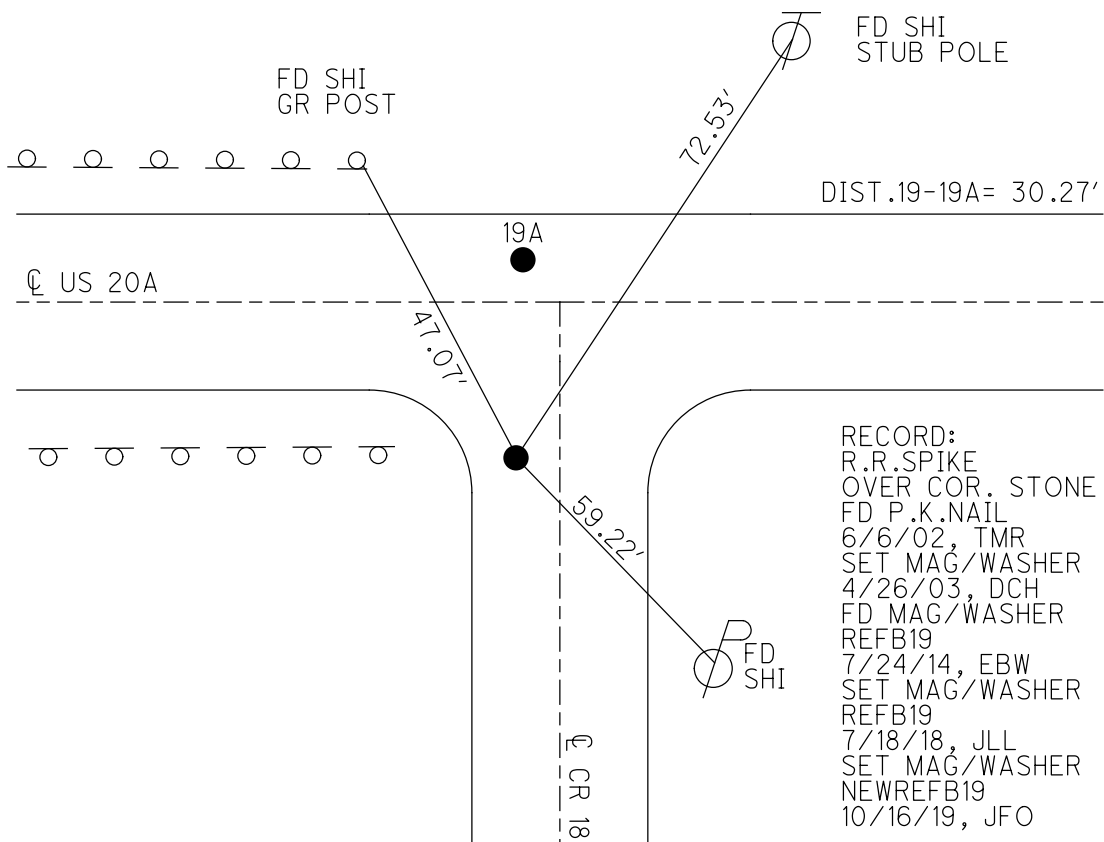
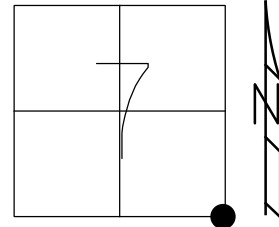
STATION: 478+63.48

HORZ.DATUM: NAD83(2011)

GEOID: 2012A

GRID: NORTHING: 699041.624

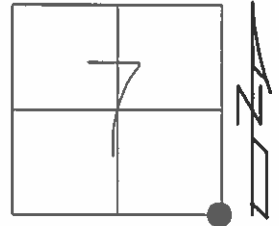
EASTING: 1500190.409



O.D.O.T. DISTRICT 2 SURVEY OFFICE (USE ONLY)

PERSONNEL _____ REFERENCE NO. 19 A SHEET 38 OF 61
 NOTES MICHALAK DATE 6/6/02 ROUTE US 20A
 H.C. ROUSOS WEATHER CLOUDY COUNTY FULTON
 R.C. MALINSKY TEMP. 65° TOWNSHIP CLINTON
 _____ SECTION 7
 _____ T 7 N R 6 E

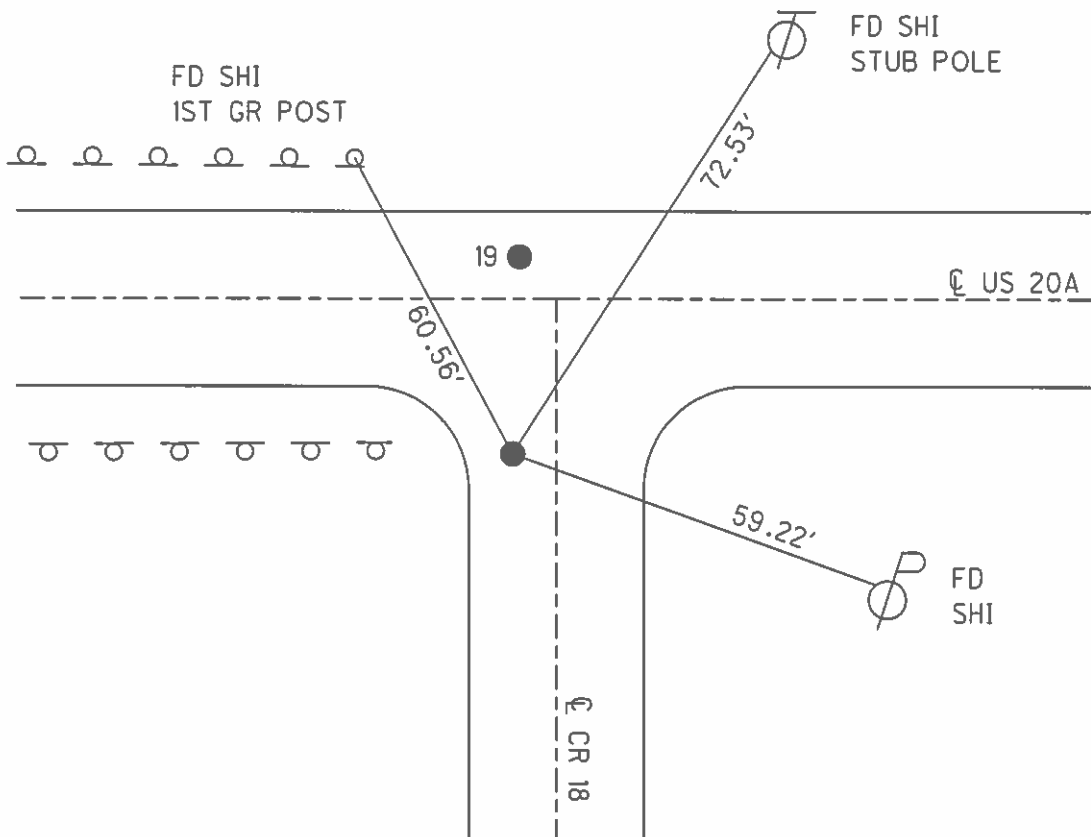
TYPE MONUMENT P.K.NAIL
 ON SURFACE - ~~BELOW~~ ON _____
~~LEFT~~ - ☉ PAV'T - RIGHT 26.5'
 - TO - EDGE PAVEMENT
 S.L.M. 478+61
 GRID: NORTHING: _____ EASTING: _____



RECORD: RR SPIKE OVER
 CORNER STONE

DIST. 19-19A = 30.32'

SET MAG/WASHER
 4/26/03, DCH



O.D.O.T. DISTRICT 2 SURVEY OFFICE

PERSONNEL

REFERENCE NO. 19

SHEET 18 OF 30

NOTES MICHALAK

DATE 6-6-02

ROUTE U.S. 20-A

H.C. ROUSOS

WEATHER CLOUDY

COUNTY FULTON

R.C. MALINSKY

TEMP. 65°

TOWNSHIP CLINTON

SECTION 7

T 7 N R 6 E

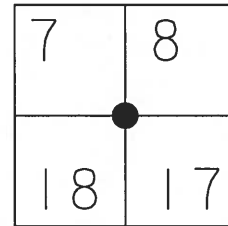
TYPE MONUMENT PK NAIL & WASHER

ON SURFACE - ~~BELOW~~ YES

LEFT - ☉ PAVT - ~~RIGHT~~ 4'

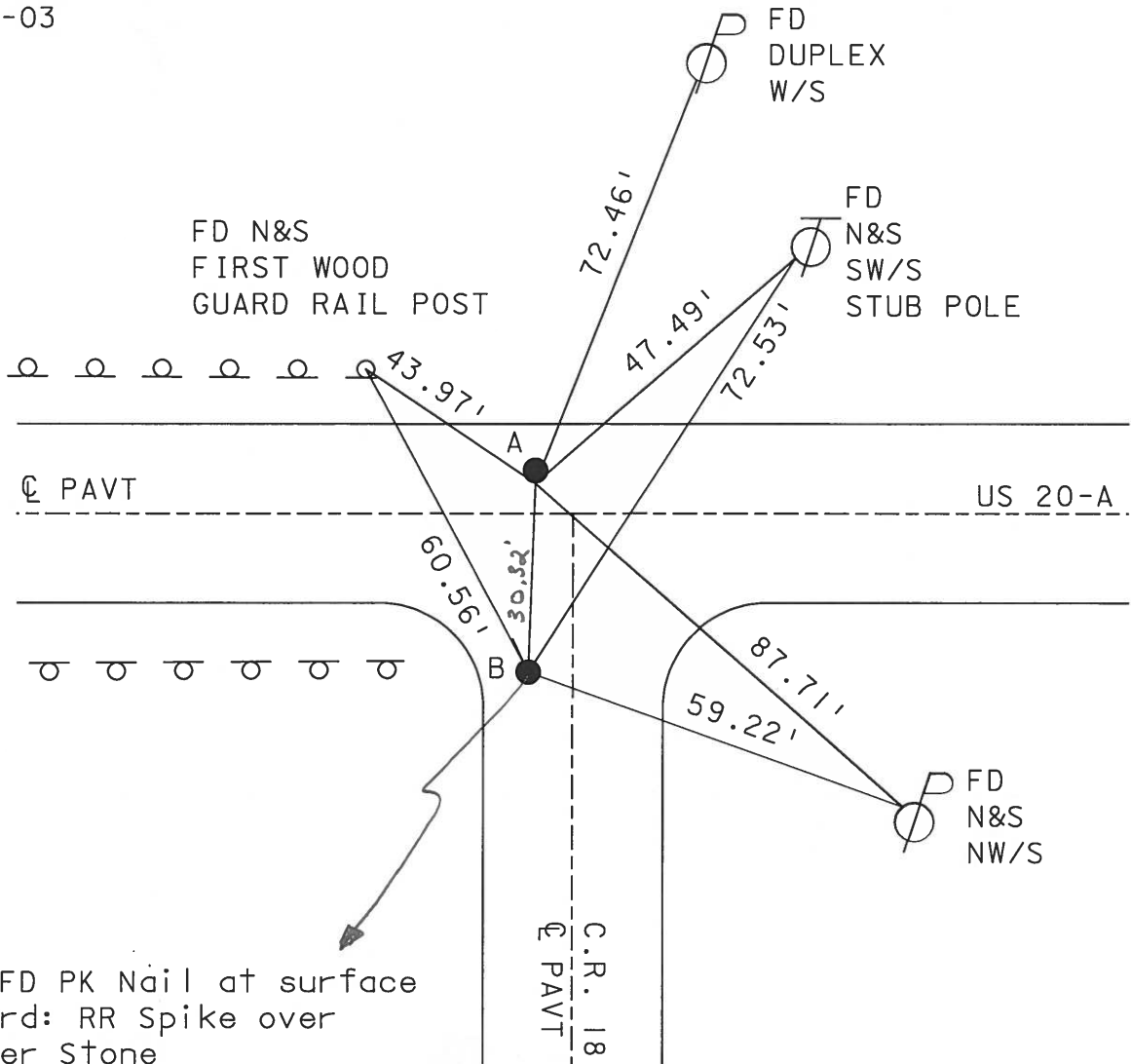
7' TO LT EDGE PAVEMENT 9.4' +/- W. OF

S.L.M. 478+61 ☉ PAVT RD S



SET MAG NAILS
& WASHERS
4-26-03
DCH

DISTANCE BETWEEN A-B = 30.32'



"B" FD PK Nail at surface
Record: RR Spike over
Corner Stone

O.D.O.T. DISTRICT 2 SURVEY OFFICE

PERSONNEL _____

REFERENCE NO. 19

SHEET 18 OF 26

NOTES HOPFMAN

H.C. LOSHREE

R.C. _____

DATE 8-10-89

WEATHER CLEAR

TEMP. 75°

ROUTE US 20-A

COUNTY FULTON

TOWNSHIP CLINTON

SECTION 7

T 7 N R 6 E

TYPE MONUMENT P.K. NAIL

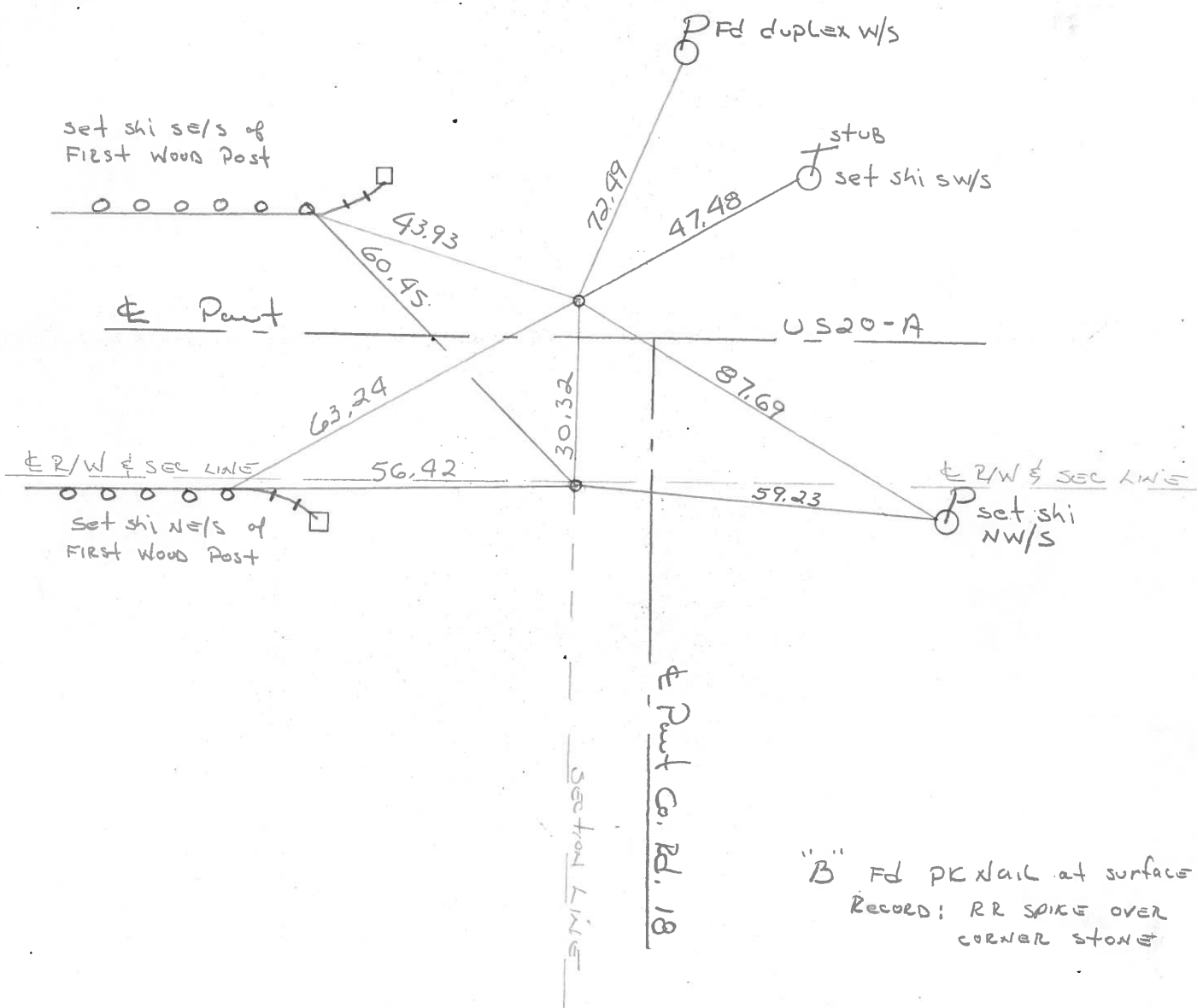
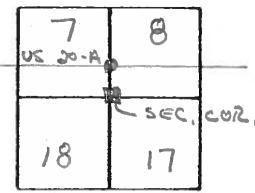
Set P.K./WASHER 9-15-89 SWH

ON SURFACE - BELOW YES

LEFT-PAV'T. - RIGHT 4.1'

6.5 TO LT EDGE PAVEMENT 9.4'± W. of PAVT ROAD SOUTH

S.L.M. 478+43



"B" Pfd PK Nail at surface
 Record: RR SPIKE OVER
 CORNER STONE

County Fulton S.R. US#20-A

Date 29 Aug. 84

Township Clinton

Weather Cloudy

Section 7-8-17-18

Temp. 80°

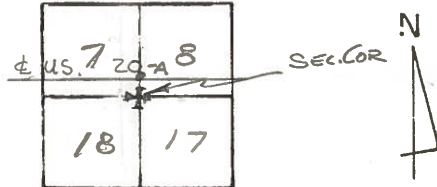
T N, R E

Personnel L. Stone

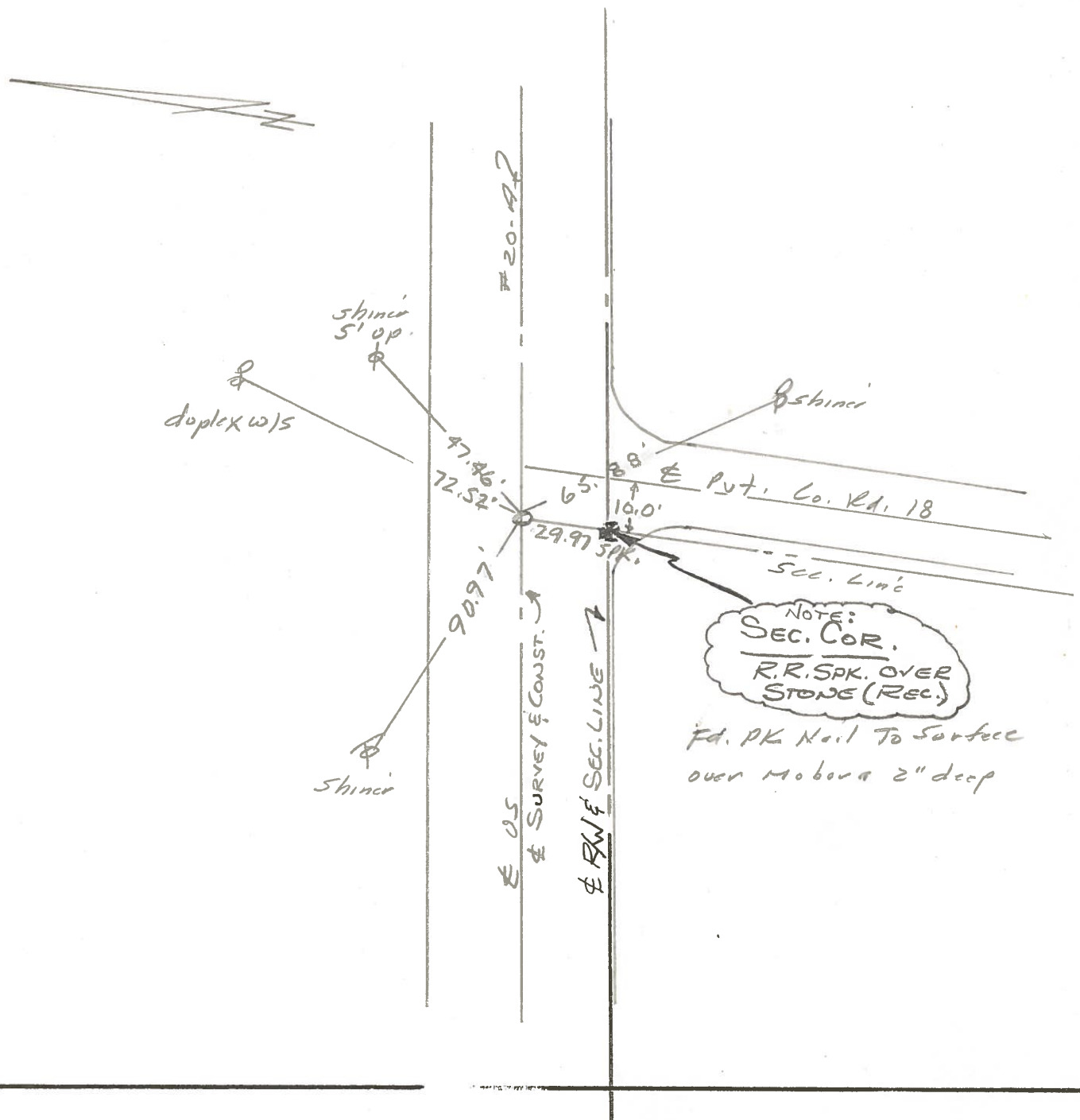
P. Neuser

R. Michalak

D. Curtis



REF. NO. 19



O.D.O.T. DISTRICT 2 SURVEY OFFICE

Sht. 18 of

County Fulton S.R. 05 20 A

Township Clinton

Section 7

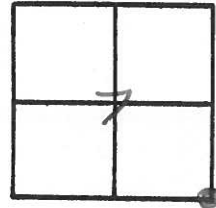
T N, R E

Personnel I. Stone
R. Michalak
P. Neuser
D. Curtis
D. Granata

Date 29 June 79

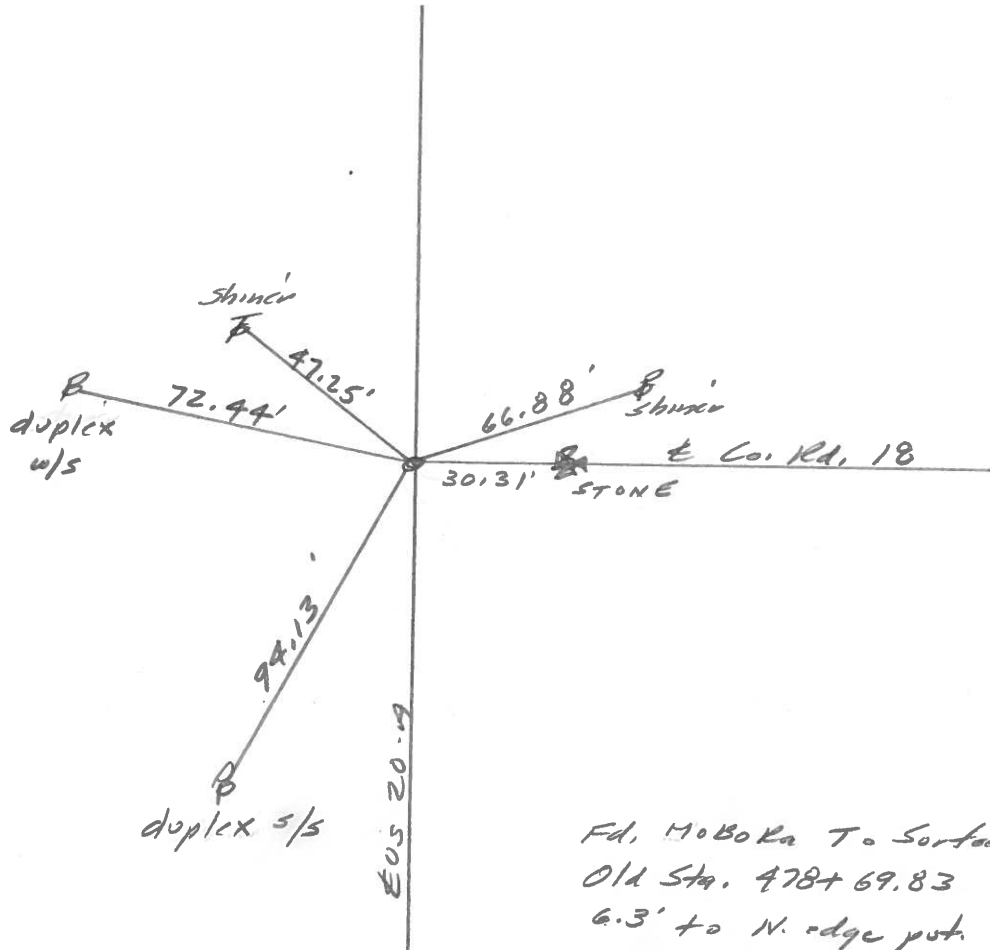
Weather Cloudy

Temp. 70°



REF No. 19

SLM OLKTOP STA. 478+57

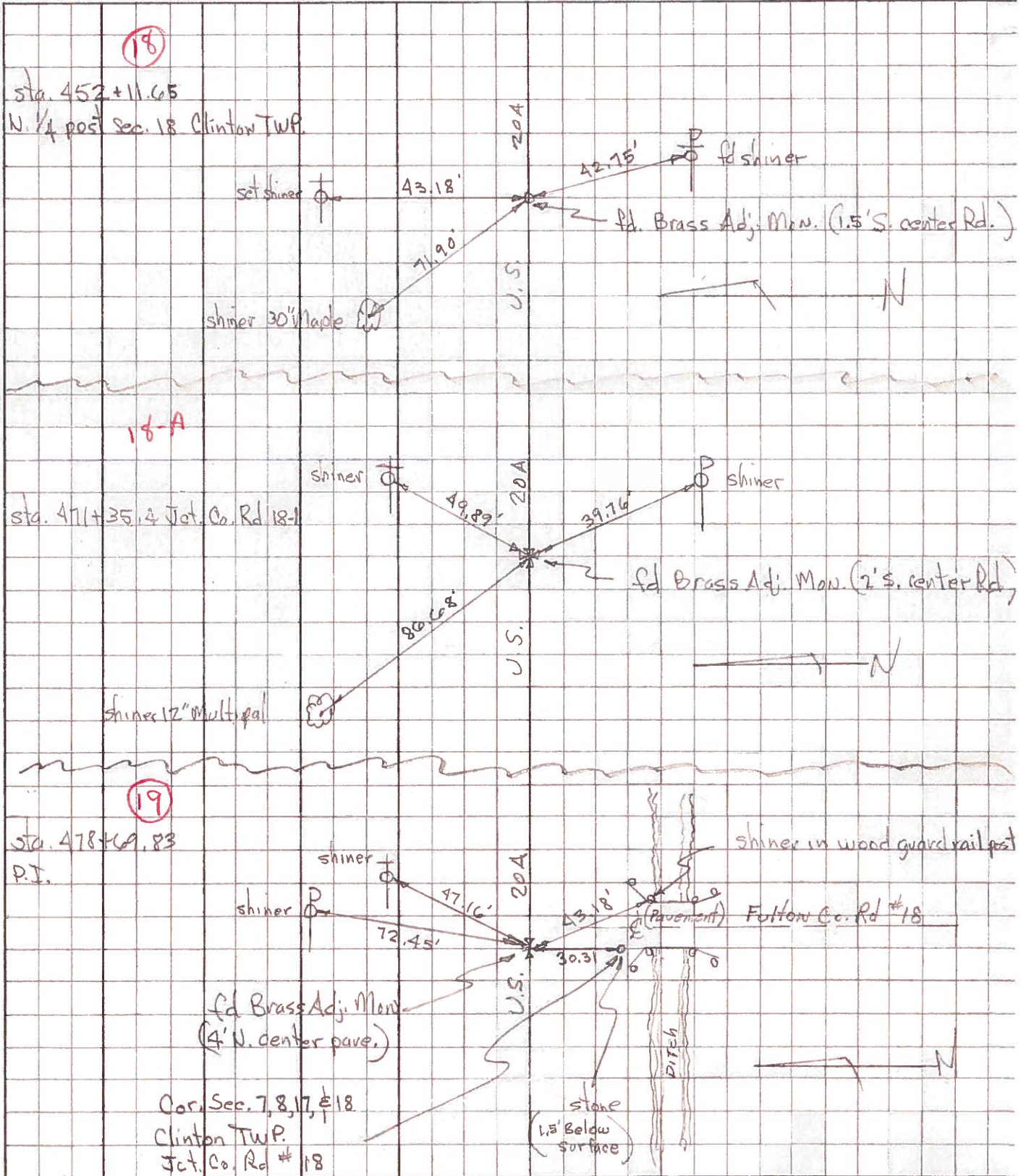


Fd. MOBORA T. Surface
Old Sta. 478+69.83
6.3' to N. edge put.
SEL. Cor. $\frac{7}{18} \frac{8}{17} = \frac{\text{STONE MON}}{1.5' \text{ deep}}$

PERSONNEL	TITLE	PERSONNEL	TITLE
Tomasic			
Nauser			
Vanyo			
Granata			

COUNTY Fulton DATE MAR. 15, 1973
 S. R. U.S. 20A WEATHER _____
 SEC. CLINTON TEMP. _____

DESCRIPTION _____ LEFT _____ CENTER LINE _____ RIGHT _____ JOB NO. _____



PERSONNEL TITLE PERSONNEL TITLE

COUNTY Fulton

DATE OK-1-27-58

S. R. # 20-114

WEATHER

SEC.

TEMP.

DESCRIPTION

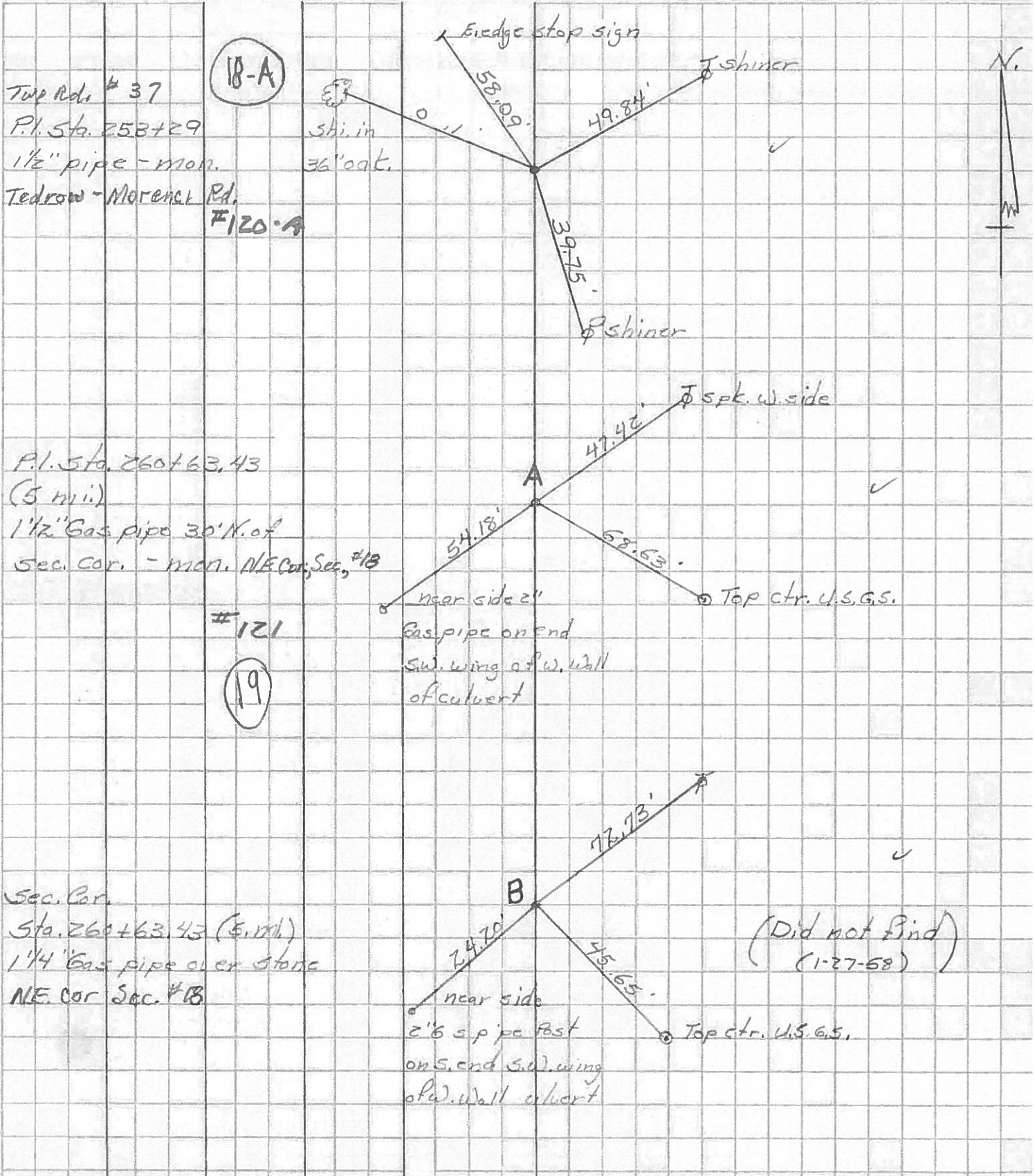
CLINTON TWP.

JOB NO.

LEFT

CENTER LINE

RIGHT



Twp Rds # 37
 P.I. Sta. 258+29
 1 1/2" pipe - mon.
 Tedrow - Moreau Rd.
 #120-A

18-A

36" oak.
 36" oak.

P.I. Sta. 260+63.43
 (5 mi.)
 1 1/2" Gas pipe 30' N. of
 Sec. Cor. - mon. NE Cor. Sec. #18

#121

19

Sec. Cor.
 Sta. 260+63.43 (5 mi.)
 1 1/4" Gas pipe over stone
 NE. Cor. Sec. #18

(Did not find)
 (1-27-58)