

O.D.O.T. DISTRICT 2 SURVEY OFFICE (USE ONLY)

PERSONNEL

REFERENCE NO. 20 A

SHEET 41 OF 62

NOTES RHOADES

DATE 7/18/18

ROUTE US 20A

H.C. LEU

WEATHER SUNNY

COUNTY FULTON

R.C. TRENKA

TEMP. 70°

TOWNSHIP CLINTON

HAGEMEYER

SECTION 8

DWG BY NASON

PID 101232

T 7 N R 6 E

TYPE MONUMENT MAG/WASHER

ON SURFACE - ~~BELOW~~ ON

OFFSET ☐ PAVEMENT 3.6' ~~±~~ : RT

6.6 TO RT EDGE PAVEMENT

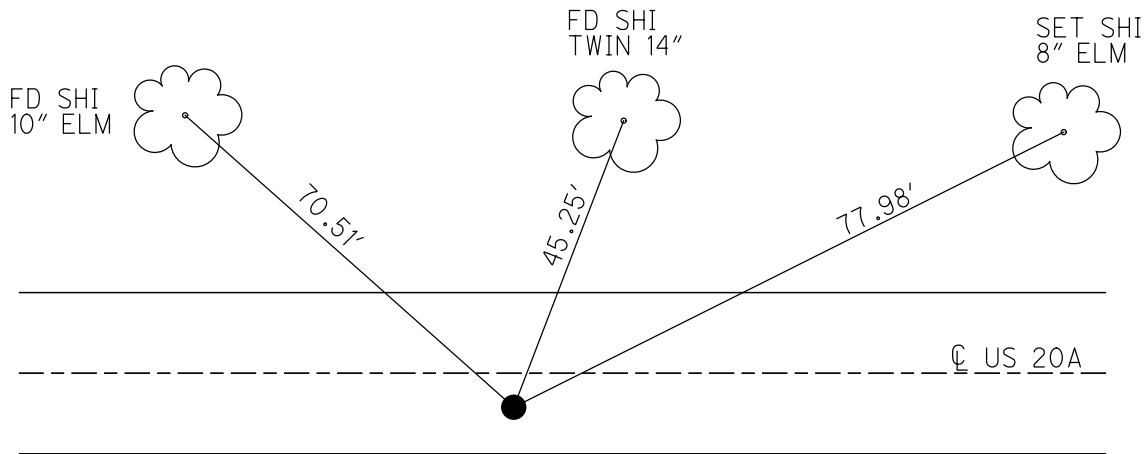
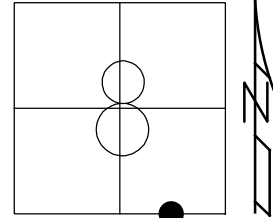
STATION: 513+17.17

HORIZ.DATUM: NAD83(2011)

GEOID: 2012A

GRID: NORTHING: 698992.223

EASTING: 1503642.433

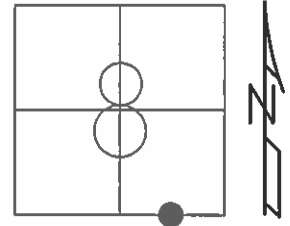


RECORD:
STA 513+22.08
FD P.K./WASHER
6/6/02, DCH
SET MAG NAIL
4/26/03, DCH
FD MAG SHANK
REF20A
7/24/14, EBW
SET MAG/WASHER
REFA20
7/18/18, JLL
FD MAG/WASHER
7/12/19, JFO
SET MAG/WASHER
NEWREFA20
10/21/19, JFO

O.D.O.T. DISTRICT 2 SURVEY OFFICE (USE ONLY)

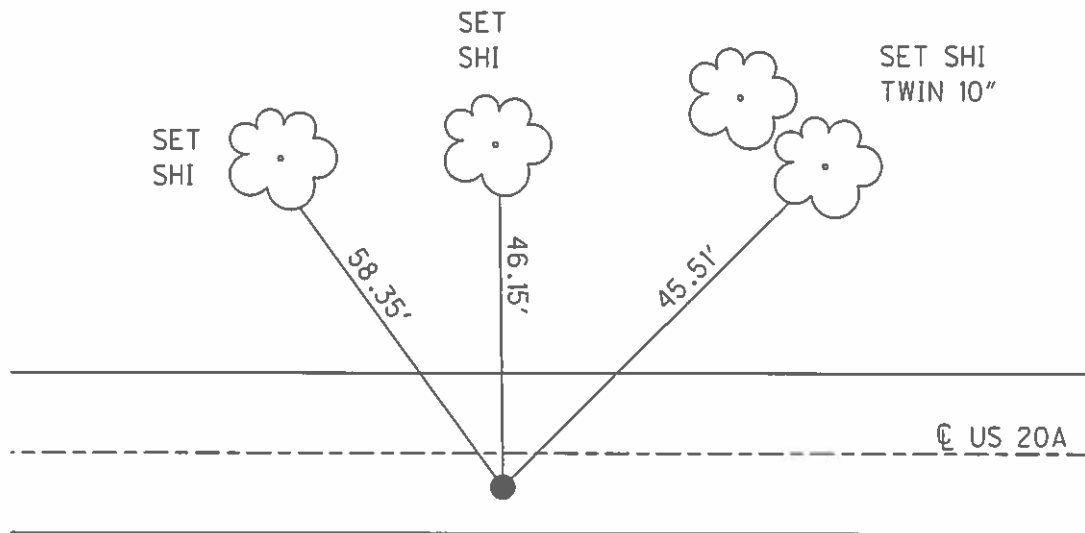
PERSONNEL	REFERENCE NO.	20 A	SHEET	40	OF	61
NOTES	MICHALAK	DATE	6/6/02	ROUTE	US 20A	
H.C.	HOMAN	WEATHER	RAIN	COUNTY	FULTON	
R.C.	MALINSKY	TEMP.	55°	TOWNSHIP	CLINTON	
				SECTION	8	
				T	7	N
				R	6	E

TYPE MONUMENT P.K./WASHER
 ON SURFACE - ~~BELOW~~ ON
~~LEFT~~ - Q PAV'T - RIGHT 3.6'
6.6' TORT EDGE PAVEMENT
 S.L.M. 513+14
 GRID: NORTHING: _____ EASTING: _____



RECORD: OLD STA 513+22.08

SET MAG NAIL
 4/26/03, DCH



O.D.O.T. DISTRICT 2 SURVEY OFFICE

PERSONNEL

REFERENCE NO. 20A

SHEET 20 OF 30

NOTES MICHALAK

DATE 6-6-02

ROUTE U.S. 20-A

H.C. HOMAN

WEATHER RAIN

COUNTY FULTON

R.C. MALINSKY

TEMP. 55°

TOWNSHIP CLINTON

SECTION 8

T 7 N R 6 E

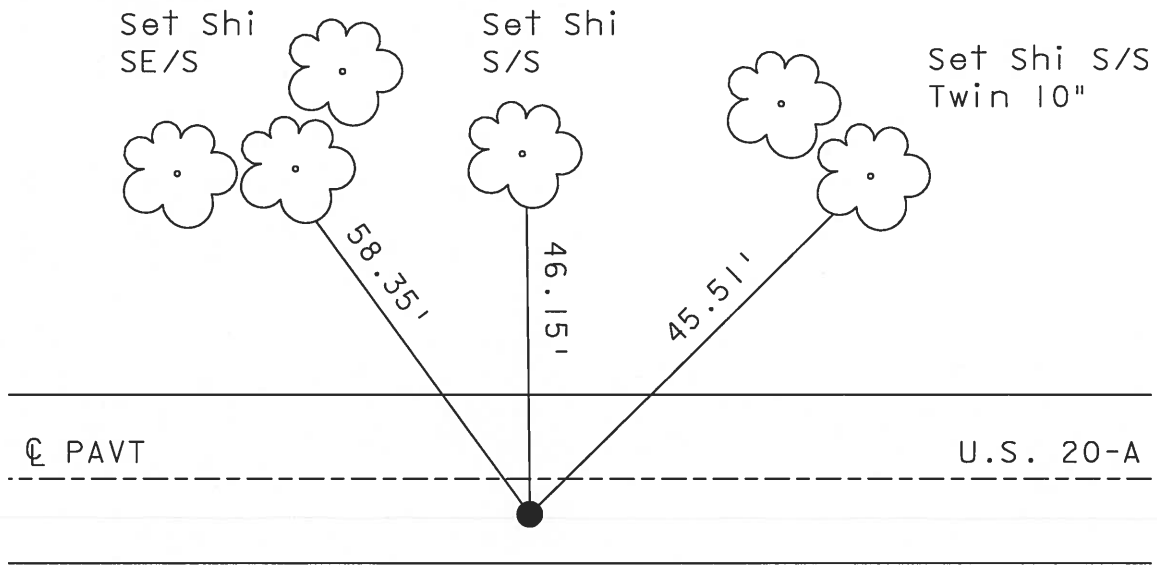
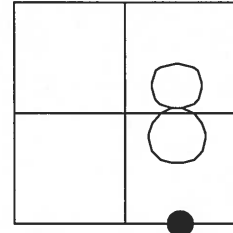
TYPE MONUMENT PK NAIL & WASHER

ON SURFACE - ~~BELOW~~ YES

~~LEFT~~ - Q PAVT - RIGHT 3.6'

6.6 TO RT EDGE PAVEMENT

S.L.M. 513+14



SET MAG NAIL,
TOP BROKE OFF,
SHANK IS IN PAVEMENT
4-26-03
DCH

Record: Old Sta 513+22.08

O.D.O.T. DISTRICT 2 SURVEY OFFICE

PERSONNEL _____

REFERENCE NO. 20-A

SHEET 20 OF 20

NOTES HOFFMAN

H.C. LOSHRICE

R.C. _____

DATE 8-10-89

WEATHER CLEAR

TEMP. 75°

ROUTE US 20-A

COUNTY FULTON

TOWNSHIP CLINTON

SECTION 8

T 7 N R 6 E

TYPE MONUMENT P.K. NAIL

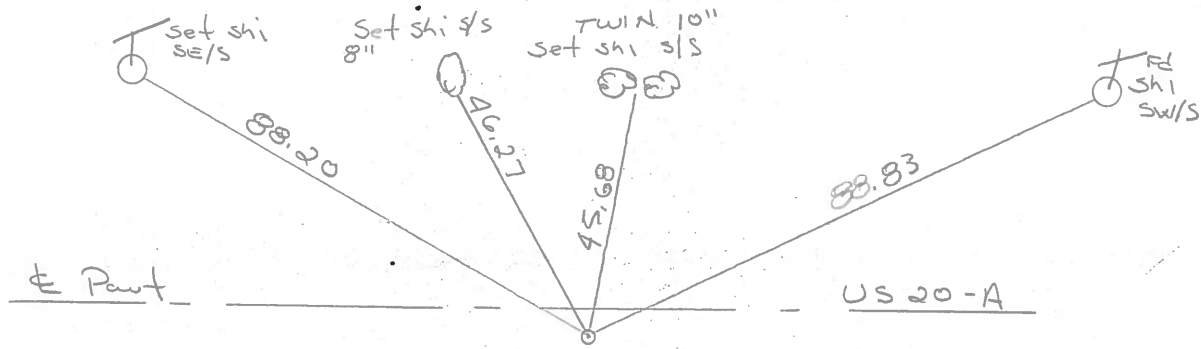
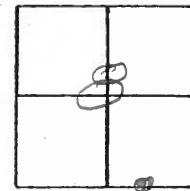
Set P.K./WASHER
9-15-89 SWK

ON SURFACE - BELOW YES

LEFT - & PAV'T. - RIGHT 3.6'

G.G. TO RT EDGE PAVEMENT

S.L.M. 512+96



RECORDS: OLD Sta. 513+22.08

ODOT. DISTRICT 2 SURVEY OFFICE

Sht. 20 of

County Eulton S.R. US-20A

Date 29 June 79

Township Clinton

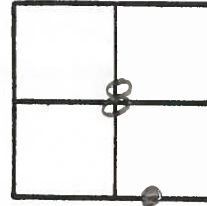
Weather Cloudy

Section 8

Temp. 70°

T N, R E

Personnel L. Stone



R. Michalak

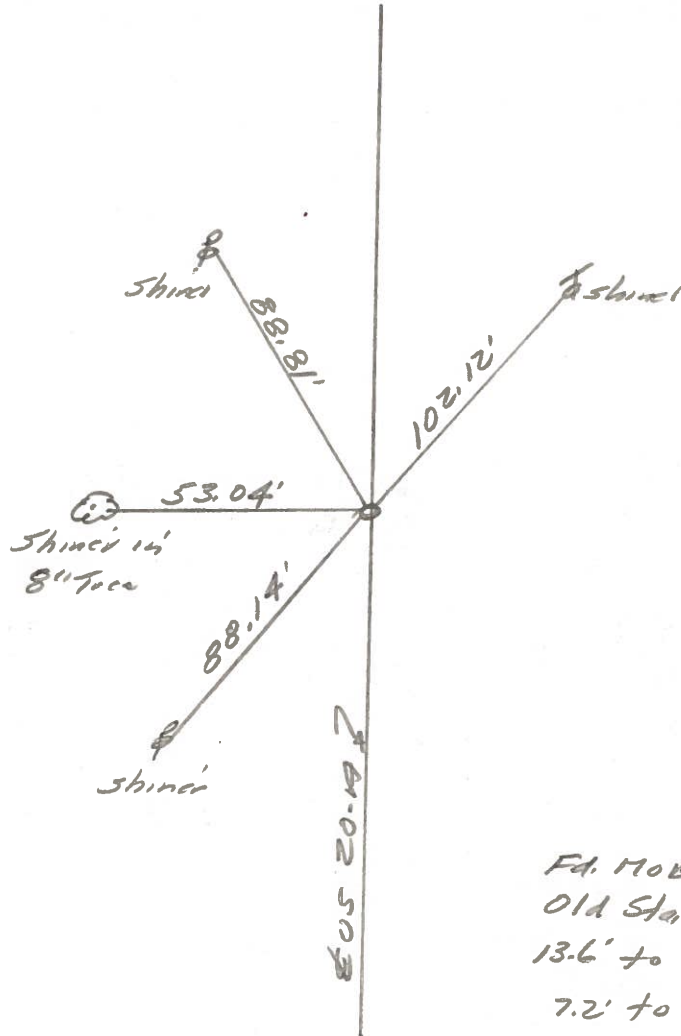
P. Heuser

D. Curtis

D. Granatg

REF. NO. 20-A

56M BKTOR STA. 513+11.5



Fd. MOBORa To Surface = P.I.
Old Sta 513+22.08
13.6' to N. edge put.
7.2' to S. edge put

PERSONNEL	TITLE	PERSONNEL	TITLE	COUNTY	DATE	WEATHER	TEMP.
Tomsic				Fulton	Mar. 15, 1973		
Neuser				S. R. U.S. 20A			
Vanyo				SEC. CLINTON			
Granata							

DESCRIPTION _____ LEFT _____ CENTER LINE _____ RIGHT _____ JOB NO. _____

