

O.D.O.T. DISTRICT 2 SURVEY OFFICE (USE ONLY)

PERSONNEL

REFERENCE NO. 21

SHEET 42 OF 62

NOTES MILLER
 H.C. O'DONNELL
 R.C. AUBLE
RHOADES

DATE 7/12/19
 WEATHER SUNNY
 TEMP. 72°

ROUTE US 20A
 COUNTY FULTON
 TOWNSHIP CLINTON
 SECTION 8

DWG BY NASON PID 101232

T 7 N R 6 E

TYPE MONUMENT MAG/WASHER

ON SURFACE - ~~BELOW~~ ON

OFFSET 0.7' RT

TO EDGE PAVEMENT 1.5' E OF C S

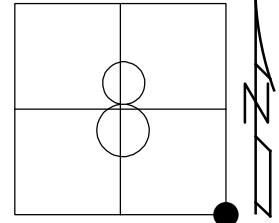
STATION: 531+62.21

HORZ. DATUM: NAD83(2011)

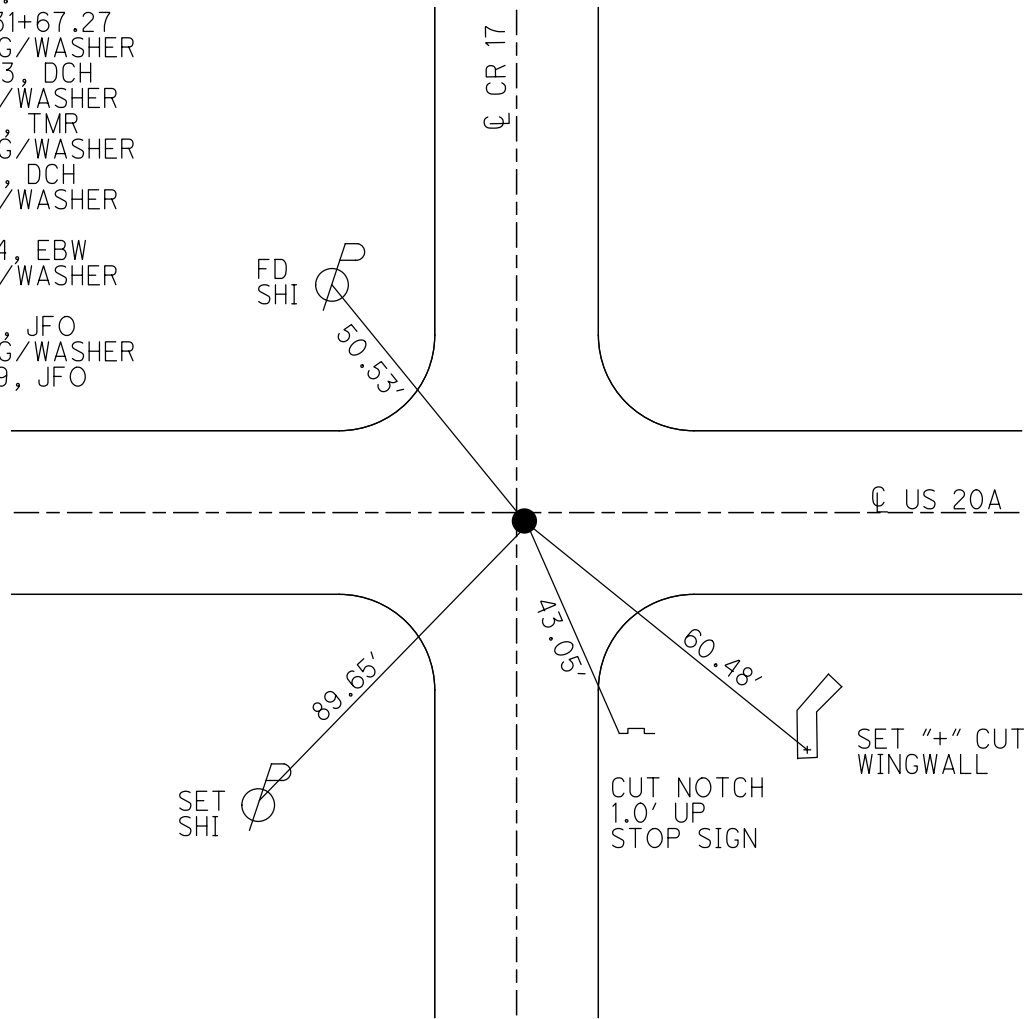
GEOID: 2012A

GRID: NORTHING: 698966.085

EASTING: 1505487.334



RECORD:
 STA. 531+67.27
 SET MAG/WASHER
 4/26/03, DCH
 FD MAG/WASHER
 1/29/13, TMR
 SET MAG/WASHER
 1/29/13, DCH
 FD MAG/WASHER
 REF21
 9/30/14, EBW
 FD MAG/WASHER
 REF21
 7/12/19, JFO
 SET MAG/WASHER
 10/21/19, JFO



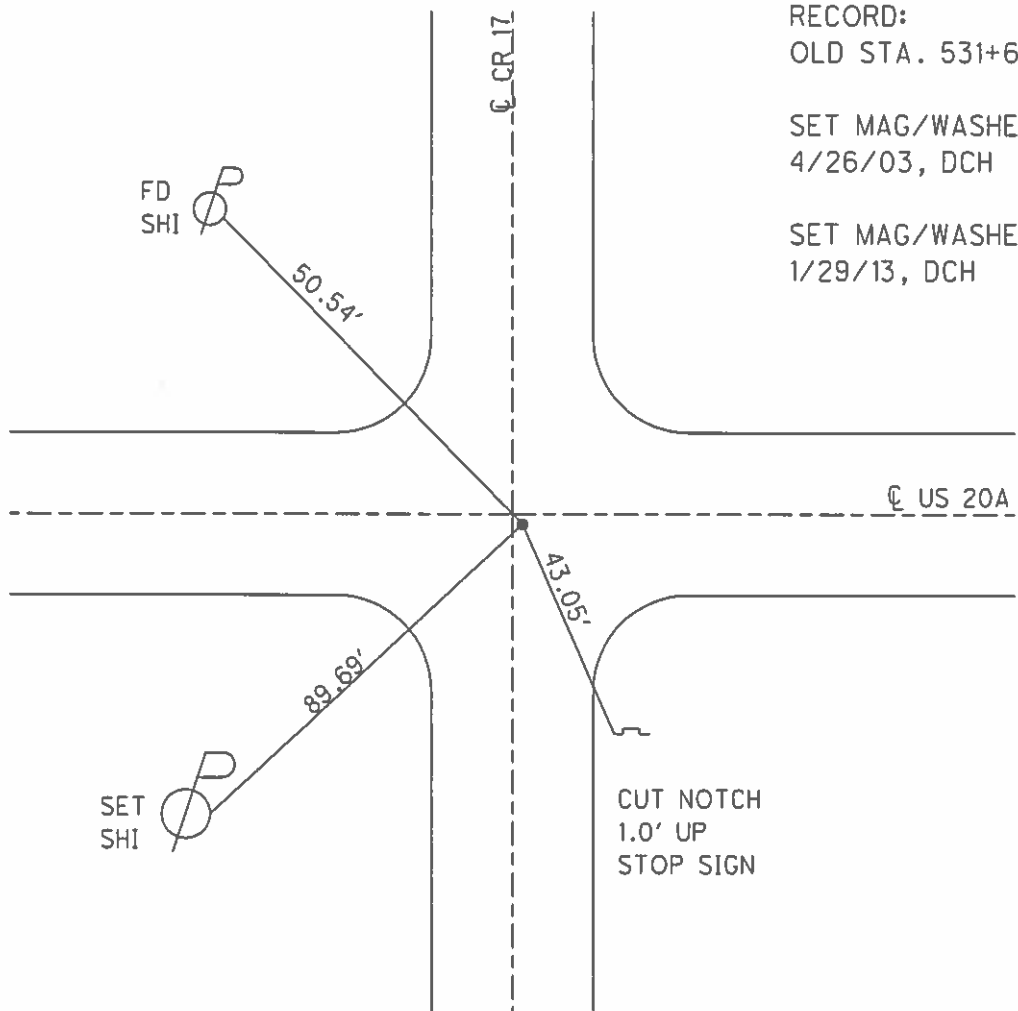
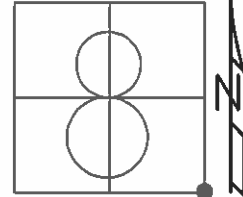
O.D.O.T. DISTRICT 2 SURVEY OFFICE (USE ONLY)

PERSONNEL _____ REFERENCE NO. 21 SHEET 41 OF 61
 NOTES HOMAN DATE 1/29/13 ROUTE US 20A
 H.C. ROUSOS WEATHER CLOUDY COUNTY FULTON
 R.C. CANTERBURY TEMP. 54° F TOWNSHIP CLINTON
 _____ SECTION 8
 _____ T 7 N R 6 E

TYPE MONUMENT _____ MAG/WASHER _____
 ON SURFACE - ~~BELOW~~ ON _____
~~LEFT~~ - Q PAV'T - RIGHT 0.7'
 _____ TO _____ EDGE PAVEMENT

S.L.M. 531+59

GRID: NORTHING: 698966.0500 EASTING: 1505487.290



RECORD:
 OLD STA. 531+67.27

SET MAG/WASHER
 4/26/03, DCH

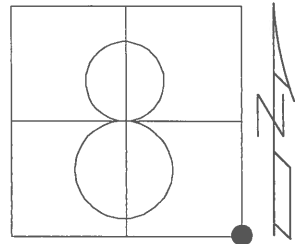
SET MAG/WASHER
 1/29/13, DCH

CUT NOTCH
 1.0' UP
 STOP SIGN

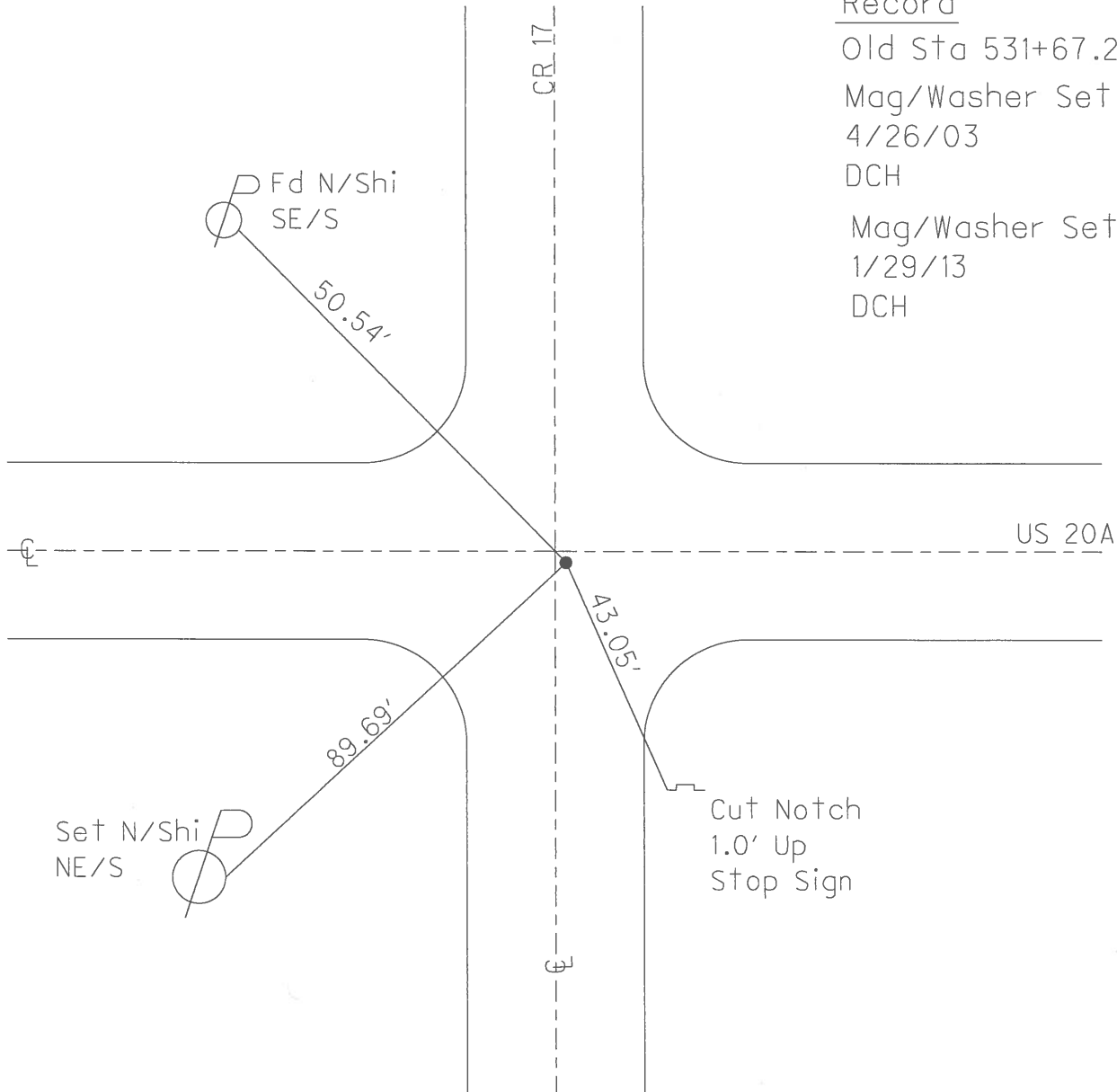
O.D.O.T. DISTRICT 2 SURVEY OFFICE (USE ONLY)

PERSONNEL _____ REFERENCE NO. 21 SHEET _____ OF _____
 NOTES Homan DATE 1/29/13 ROUTE 20A
 H.C. Rousos WEATHER Cloudy COUNTY Fulton
 R.C. Canterbury TEMP. 54° F TOWNSHIP Clinton
 _____ SECTION 8
 _____ T 7 N R 6 E

TYPE MONUMENT Mag Nail/Washer
 ON SURFACE - ~~BELOW~~ On
~~LEFT - C PAVT~~ - RIGHT 0.7'
_____ TO _____ EDGE PAVEMENT 1.5' E Of
_____ Road South
 S.L.M. 531+59
 Grid: Northing: 698,966.0500 Easting: 1,505,487.290



Record
 Old Sta 531+67.27
 Mag/Washer Set
 4/26/03
 DCH
 Mag/Washer Set
 1/29/13
 DCH



O.D.O.T. DISTRICT 2 SURVEY OFFICE

PERSONNEL _____

REFERENCE NO. 21

SHEET 21 OF 26

NOTES HOFFMAN

H.C. LOCHRICE

R.C. _____

DATE 8-10-89

WEATHER CLEAR

TEMP. 75°

ROUTE US 20-A

COUNTY FULTON

TOWNSHIP CLINTON

SECTION 8

T7 NR 6 E

TYPE MONUMENT P.K. Nail

Set P.K./WASHER
9-15-89 SWK

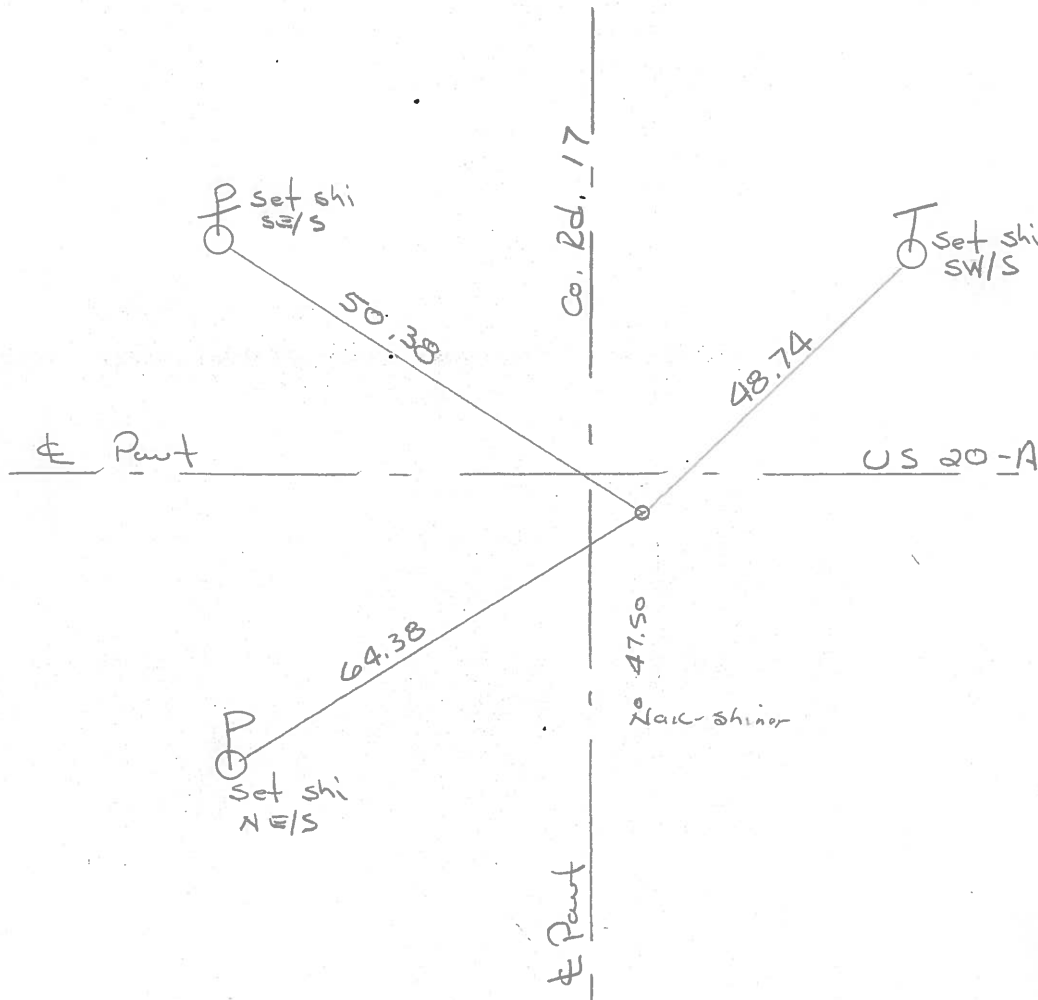
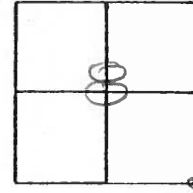
ON SURFACE - BELOW YES

LEFT- & PAV'T. - RIGHT 0.7'

TO EDGE PAVEMENT 1.5' E. of

S.L.M. 531+41

ROAD SOUTH



RECORD! OLD sta. 531+67.27

County Fulton S.R. US-20A

Township Clinton

Section 8

T N, R E

Personnel I. Stone

R. Michalak

P. Neuser

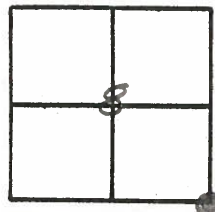
D. Curtis

D. Granata

Date 29 June 79

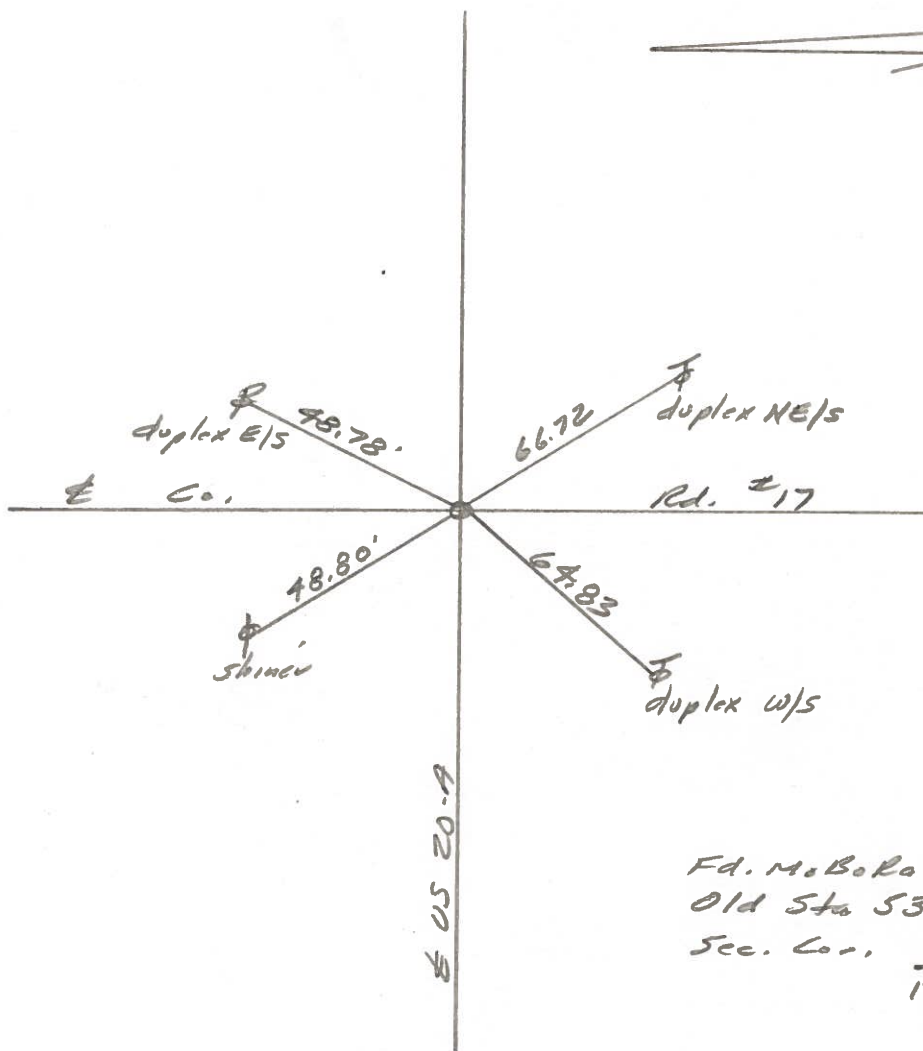
Weather Cloudy

Temp. 70°



REF. No. 21

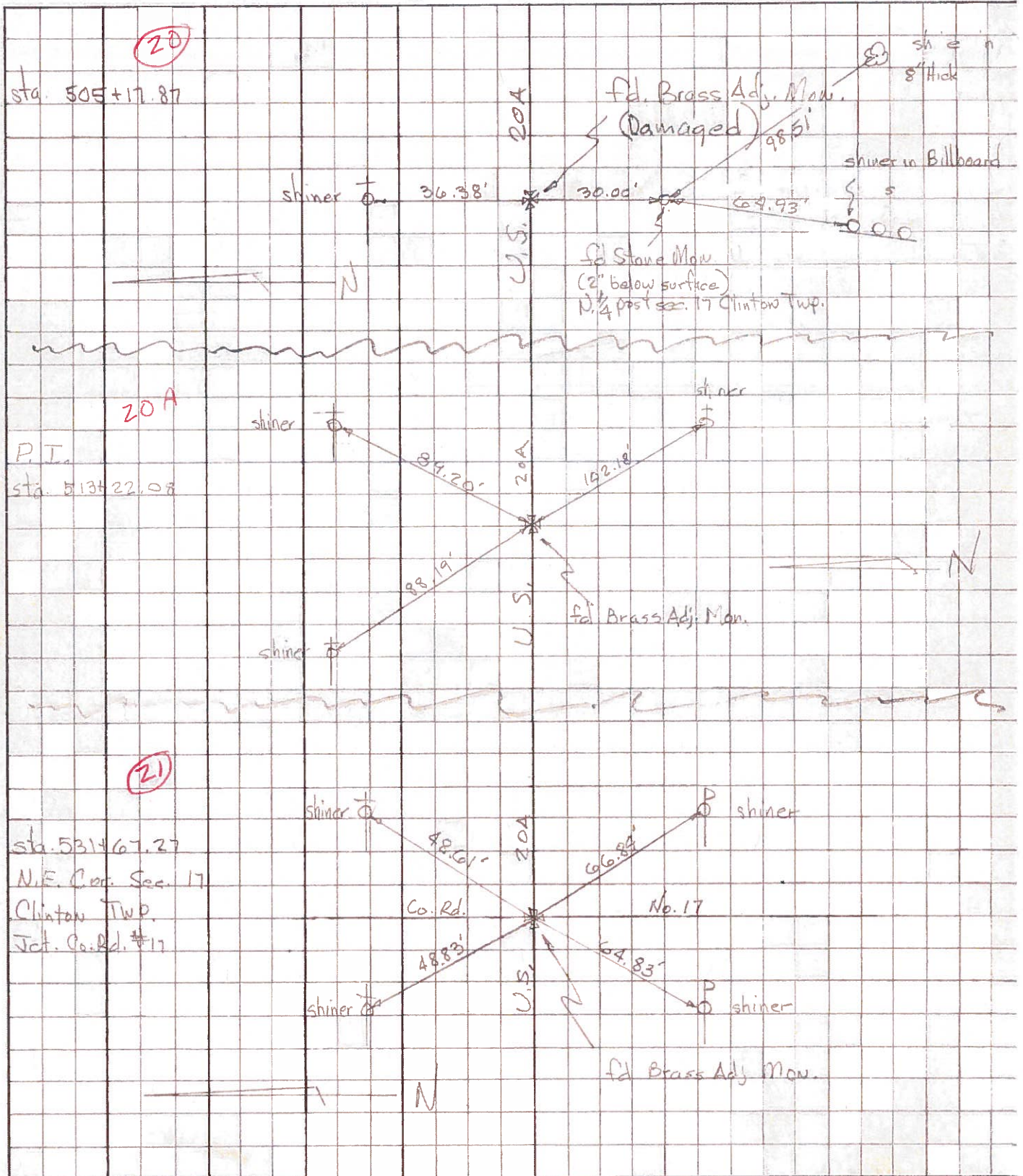
SLM BLK TOP STA. 531+58



Fd. No. B0R0 To Surface
Old Sta 531+67.27
Sec. Cor. $\frac{8}{17} \frac{9}{16}$

PERSONNEL	TITLE	PERSONNEL	TITLE	COUNTY	DATE
Tomsic				Fulton	Mar. 15, 1973
Neuser				S. R. U.S. 20A	WEATHER
Vanya				SEC. CLINTON	TEMP.
Granata					

DESCRIPTION LEFT CENTER LINE RIGHT JOB NO.



PERSONNEL TITLE PERSONNEL TITLE

COUNTY Fulton DATE OK-1-27-58

S. R. #20-A14. WEATHER

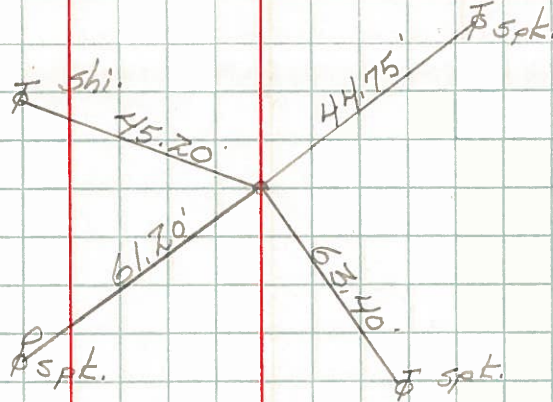
SEC. TEMP.

DESCRIPTION CLINTON TWP. JOB NO.

LEFT CENTER LINE RIGHT

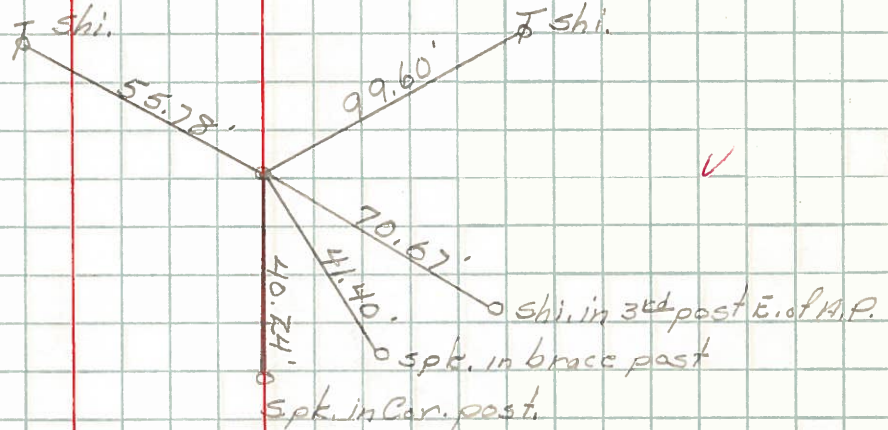
Sec. Cor.
Sta. 313+60.87
(6 mi.)
Stone-Mon.
NE. Cor. Sec. #17

(21)
#123



N 1/4 Sec. #16
Iron Pin on 2
Sta. 339+90.3

(22)
#124



Sta. 353+02.3
(See page 10)
NW 1/4 of NE 1/4 Sec. #16

Sec. Cor.
Sta. 366+19.36
(7 mi.)
Stone-mon
NE. Cor. Sec. #16

(23)
#125

