

O.D.O.T. DISTRICT 2 SURVEY OFFICE (USE ONLY)

PERSONNEL

REFERENCE NO. 22 A

SHEET 44 OF 62

NOTES LEU

DATE 4/22/19

ROUTE US 20A

H.C. LEU

WEATHER SUNNY

COUNTY FULTON

R.C. JAMES

TEMP. 57°

TOWNSHIP CLINTON

SECTION 9

DWG BY NASON

PID 101232

T 7 N R 6 E

TYPE MONUMENT MAG/WASHER

ON SURFACE - ~~BELOW~~ ON

OFFSET \odot PAVEMENT 0.7' ~~ET~~ : RT

- TO - EDGE PAVEMENT

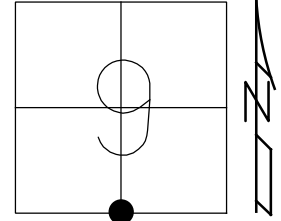
STATION: 558+44.84

HORZ.DATUM: NAD83(2011)

GEOID: 2012A

GRID: NORTHING: 698936.810

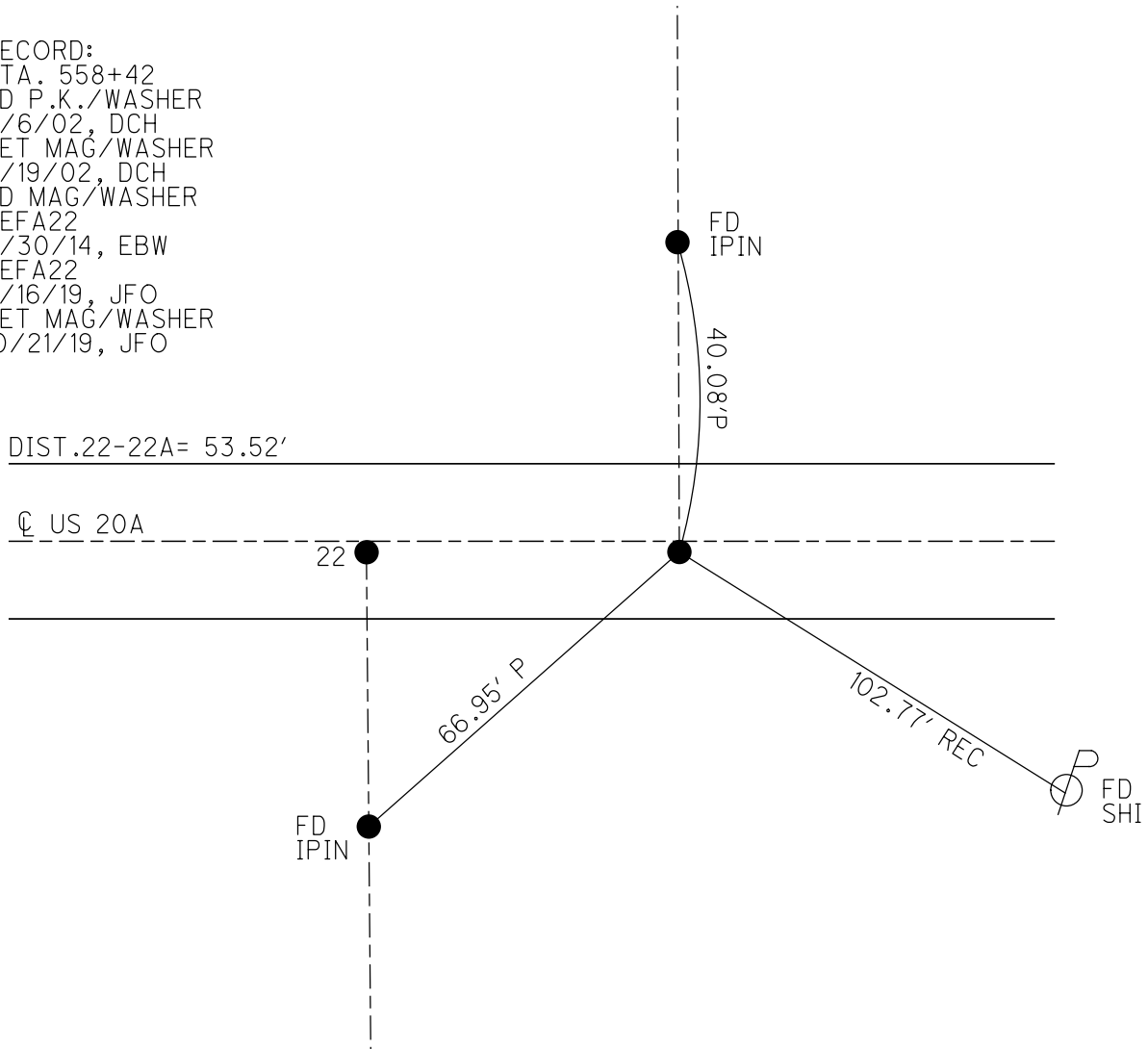
EASTING: 1508169.804



RECORD:
 STA. 558+42
 FD P.K./WASHER
 6/6/02, DCH
 SET MAG/WASHER
 9/19/02, DCH
 FD MAG/WASHER
 REFA22
 9/30/14, EBW
 REFA22
 7/16/19, JFO
 SET MAG/WASHER
 10/21/19, JFO

DIST. 22-22A = 53.52'

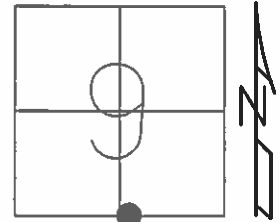
\odot US 20A



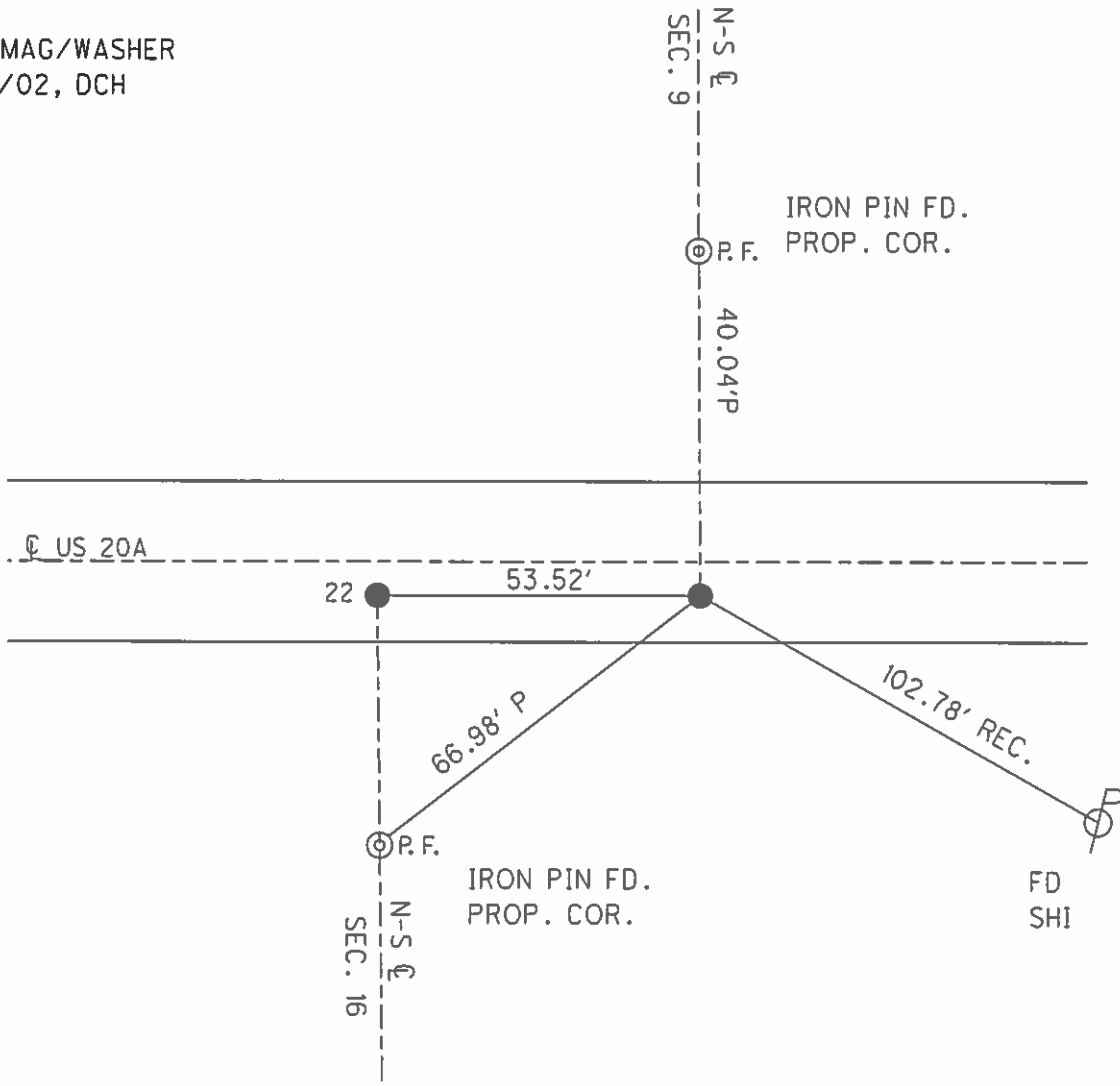
O.D.O.T. DISTRICT 2 SURVEY OFFICE (USE ONLY)

PERSONNEL	REFERENCE NO.	22 A	SHEET	43	OF	61
NOTES	MICHALAK	DATE	6/6/02	ROUTE	US 20A	
H.C.	HOMAN	WEATHER	RAIN	COUNTY	FULTON	
R.C.	MALINSKY	TEMP.	56°	TOWNSHIP	CLINTON	
				SECTION	9	
				T	7	N
				R	6	E

TYPE MONUMENT P.K./WASHER
 ON SURFACE - ~~BELOW~~ ON
~~LEFT~~ - CL PAV'T - RIGHT 0.9'
9.8' TO RT EDGE PAVEMENT
 S.L.M. 558+42
 GRID: NORTHING: _____ EASTING: _____



SET MAG/WASHER
 9/19/02, DCH



O.D.O.T. DISTRICT 2 SURVEY OFFICE

PERSONNEL

REFERENCE NO 22/22A SHEET 22 OF 30

NOTES MICHALAK

DATE 6-6-02

ROUTE U.S. 20-A

H.C. HOMAN

WEATHER RAIN

COUNTY FULTON

R.C. MALINSKY

TEMP. 56°

TOWNSHIP CLINTON

SECTION 9

T 7 N R 6 E

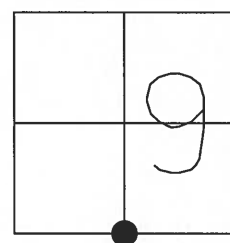
TYPE MONUMENT PK NAIL & WASHER

ON SURFACE - ~~BELOW~~ YES

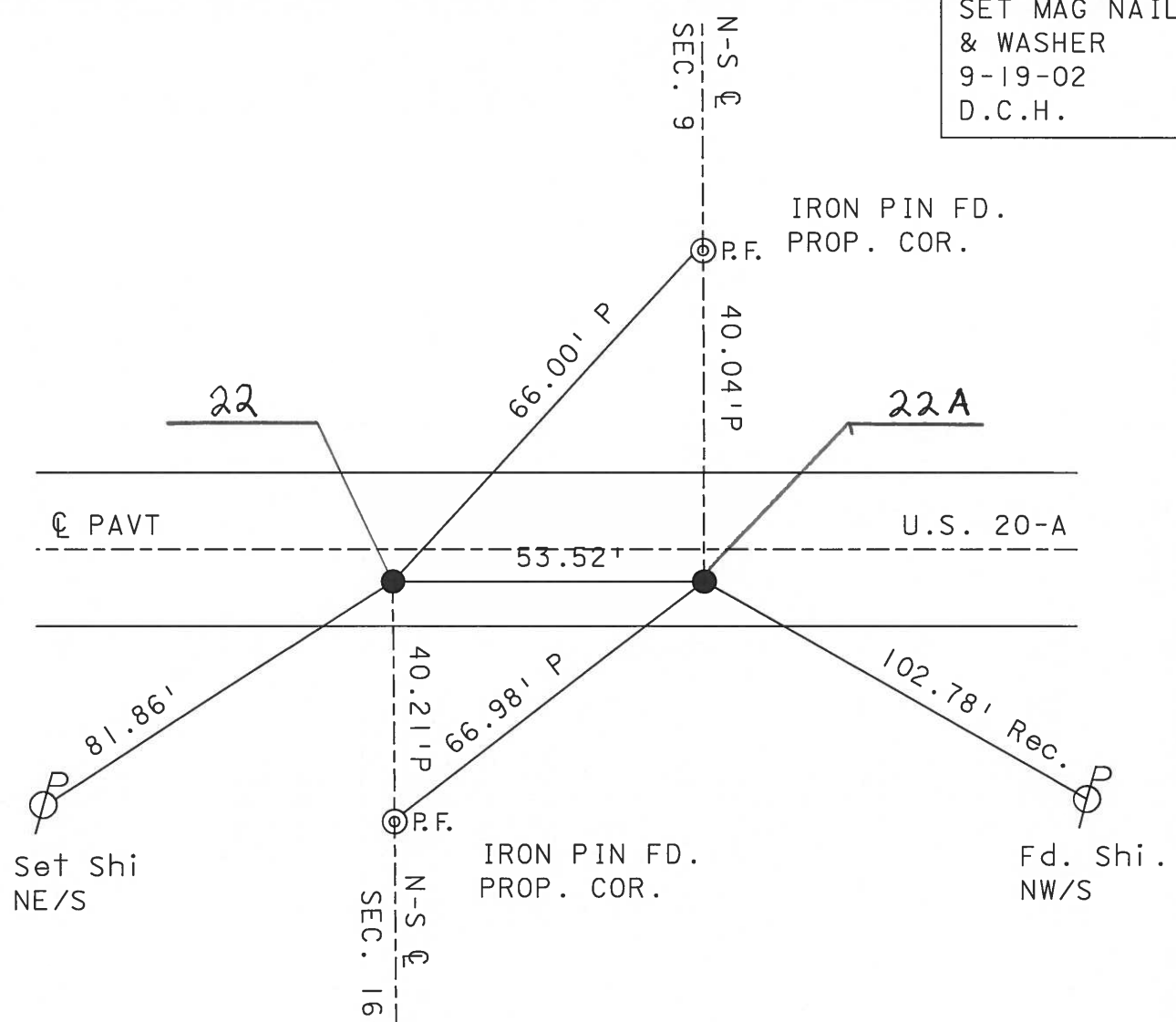
~~LEFT~~ - Q PAV'T - RIGHT 0.9'

9.8 TO RT EDGE PAVEMENT

S.L.M. 557+89 - 558+42



SET MAG NAIL & WASHER
9-19-02
D.C.H.



Record: Old Sta. 557+96.7 N¹/₄ Cor Sec. 16

O.D.O.T. DISTRICT 2 SURVEY OFFICE

PERSONNEL _____

REFERENCE NO. 22/22-A SHEET 22 OF 26

NOTES HOFFMAN

H.C. LOEHRIKE

R.C. _____

DATE 8-10-89

WEATHER CLEAR

TEMP. 75°

ROUTE US 20-A

COUNTY FULTON

TOWNSHIP CLINTON

SECTION 9-16

T7 NR 6 E

TYPE MONUMENT P.K. - P.K.

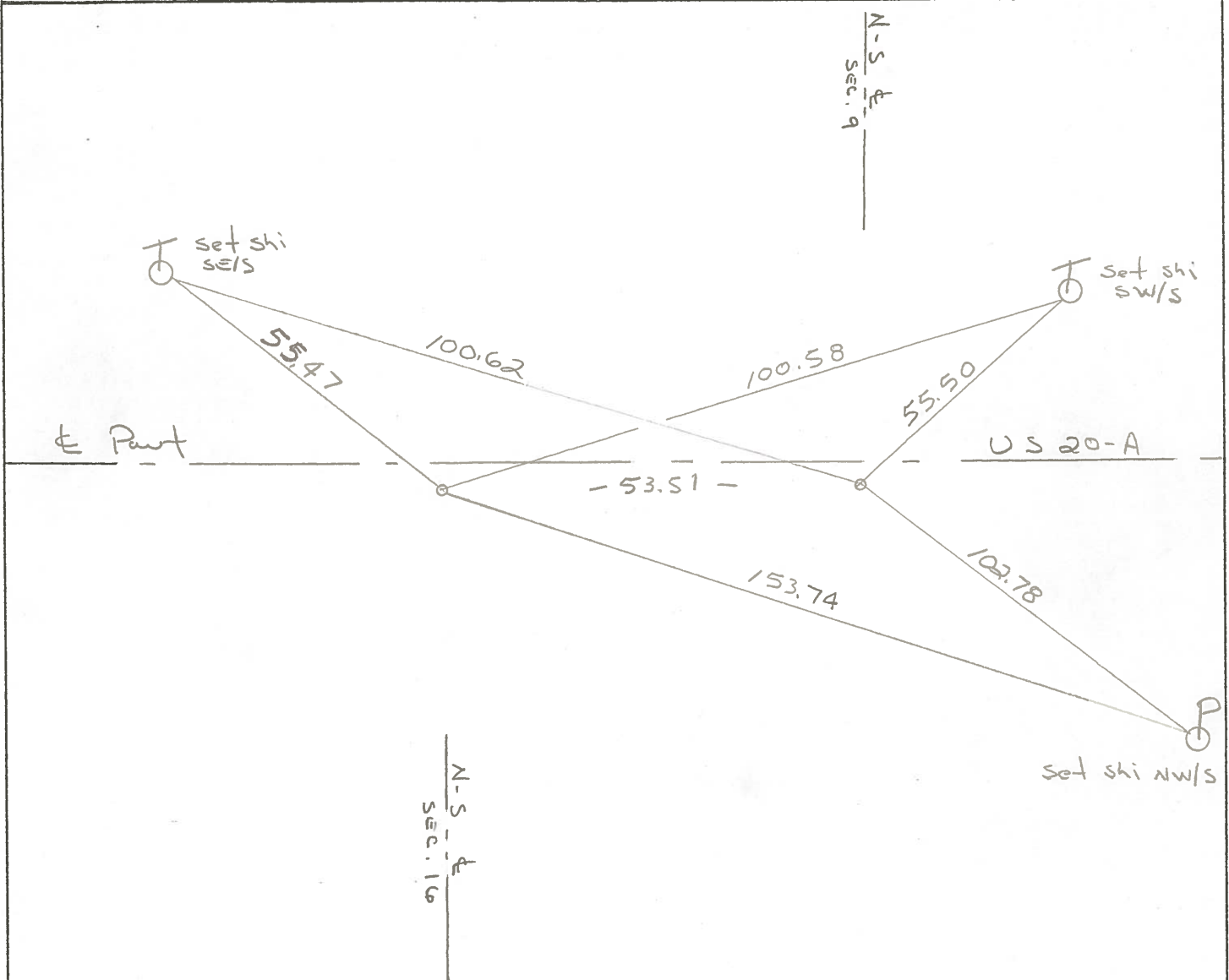
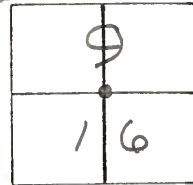
ON SURFACE - ~~BELOW~~ YES - YES

~~LEFT - & PAV'T.~~ - RIGHT 0.9' - 0.9'

9.8 TO RT EDGE PAVEMENT

S.L.M. 557+71 - 558+24

Set P.K.'s/WASHERS
9-15-89 EWZ



RECORD: OLD sta 557+96.7 N 1/4 cor Sec. 16

County Fulton S.R. US-201A

Date 29 June 79

Township Clinton

Weather Cloudy

Section 16

Temp. 70°

T N, R E

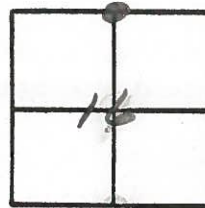
Personnel L. Stone

R. Michalak

P. Neuser

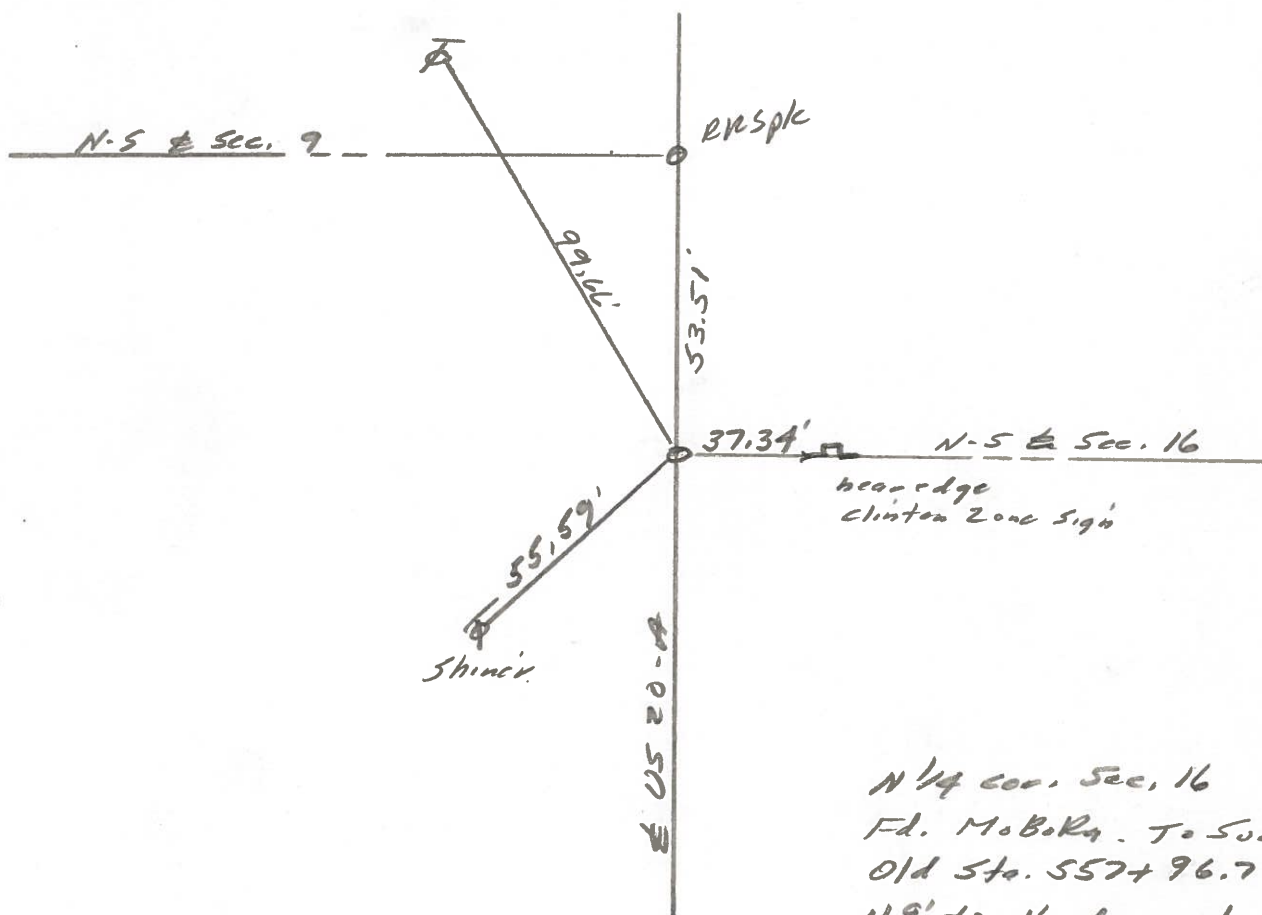
D. Curtis

D. Granata



REF NO. 22

SLM BLUETOY STA. 557+88.5



N 1/4 cor. Sec. 16
Fd. MoBoRn. To Surface
Old Sta. 557+96.7
11.9' to N. edge put,
9.8' to S. edge put.

County Fulton S.R. US20A

Township Clinton

Section 9

T N, R E

Personnel L. Stone

R. Michalak

P. Neuser

D. Curtis

D. Granata

Date 29 June 79

Weather Cloudy

Temp. 70°



REF. NO. 22-A

SLM BLETOP STA. 558+42

