

O.D.O.T. DISTRICT 2 SURVEY OFFICE (USE ONLY)

PERSONNEL

REFERENCE NO. 24

SHEET 46 OF 62

NOTES RHOADES

DATE 7/18/18

ROUTE US 20A

H.C. LEU

WEATHER CLOUDY

COUNTY FULTON

R.C. TRENKA

TEMP. 77°

TOWNSHIP CLINTON

SECTION 10

DWG BY NASON

PID 101232

T 7 N R 6 E

TYPE MONUMENT P.K.NAIL

ON SURFACE - ~~BELOW~~ ON

OFFSET 0.2' LT : ~~RT~~

10.3' TO LT EDGE PAVEMENT

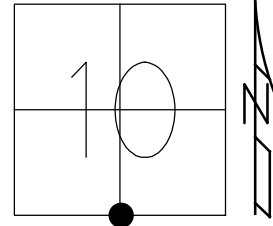
STATION: 610+42.02

HORZ.DATUM: NAD83(2011)

GEOID: 2012A

GRID: NORTHING: 698896.393

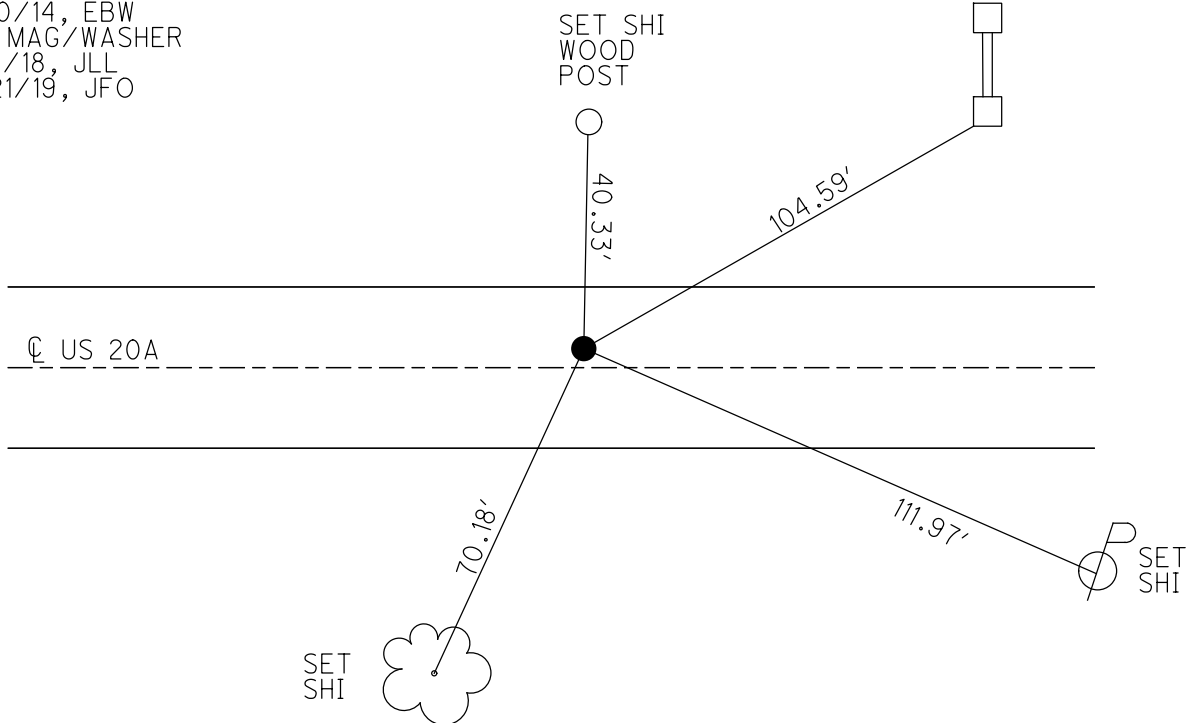
EASTING: 1513366.796



RECORD:

STA. 610+47.88
 FD P.K./WASHER
 6/6/02, DCH
 SET MAG/WASHER
 9/19/02, DCH
 FD P.K.NAIL
 BENT NORTHERLY
 REF24
 9/30/14, EBW
 SET MAG/WASHER
 7/18/18, JLL
 10/21/19, JFO

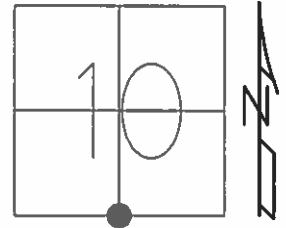
BRICK COLUMN
 TOP 17TH BRICK UP
 CHURCH SIGN



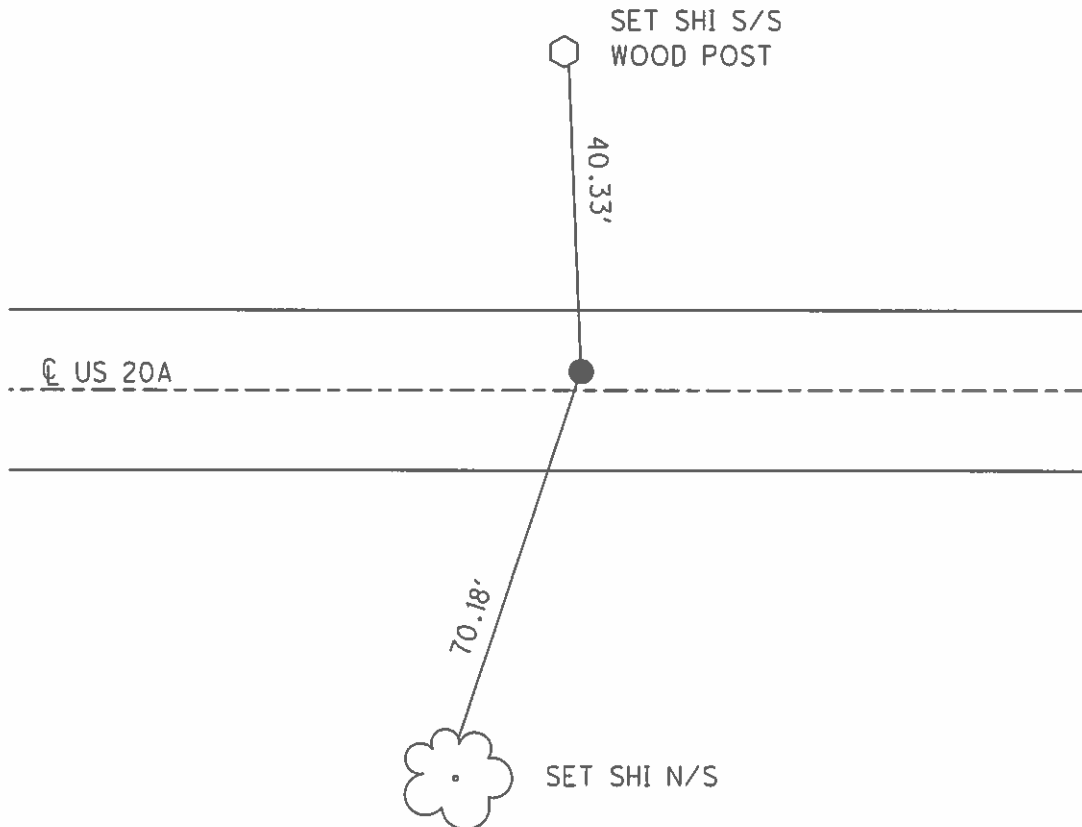
O.D.O.T. DISTRICT 2 SURVEY OFFICE (USE ONLY)

PERSONNEL _____ REFERENCE NO. 24 SHEET 45 OF 61
NOTES MICHALAK DATE 6/6/02 ROUTE US 20A
H.C. HOMAN WEATHER CLOUDY COUNTY FULTON
R.C. MALINSKY TEMP. 56° TOWNSHIP CLINTON
SECTION 10
T 7 N R 6 E

TYPE MONUMENT P.K./WASHER
ON SURFACE - ~~BELOW~~ ON _____
LEFT - ☉ PAV'T - ~~RIGHT~~ 0.2'
10.3' TO LT EDGE PAVEMENT
S.L.M. 610+41
GRID: NORTHING: _____ EASTING: _____



SET MAG/WASHER
9/19/02, DCH



RECORD: OLD STA. 610+47.88

O.D.O.T. DISTRICT 2 SURVEY OFFICE

PERSONNEL _____

REFERENCE NO. 24

SHEET 24 OF 26

NOTES HOFFMAN

H.C. LOSHRKE

R.C. _____

DATE 8-10-89

WEATHER CLEAR

TEMP. 75°

ROUTE US 20-A

COUNTY FULTON

TOWNSHIP CLINTON

SECTION 10

T.T.A.R.G.E.

TYPE MONUMENT P.K. NAIL

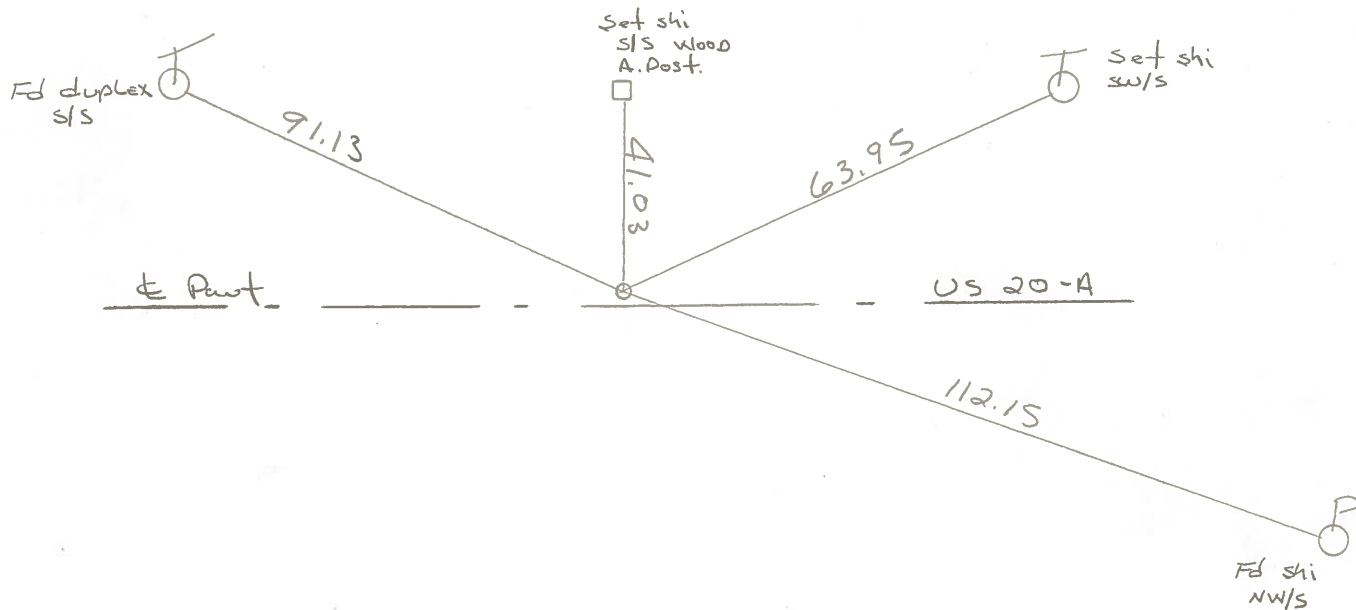
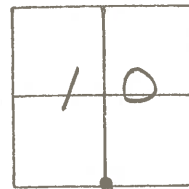
ON SURFACE - ~~BELOW~~ YES

LEFT - ~~C~~ PAN'T. - ~~RIGHT~~ 0.2'

10.3 TO Lt. EDGE PAVEMENT

S.L.M. 610 + 23

Set P.K./WASHER
9-15-89 SWH



RECORDED: OLD sta. 610 + 47.88

Q.D.O.T. DISTRICT 2 SURVEY OFFICE

Sht. 25 of

County Fulton S.R. US20-A

Date 29 June 79

Township Clinton

Weather Cloudy

Section 10

Temp. 70°

T N, R E

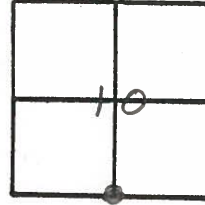
Personnel L. Stone

R. Michalak

P. Neuser

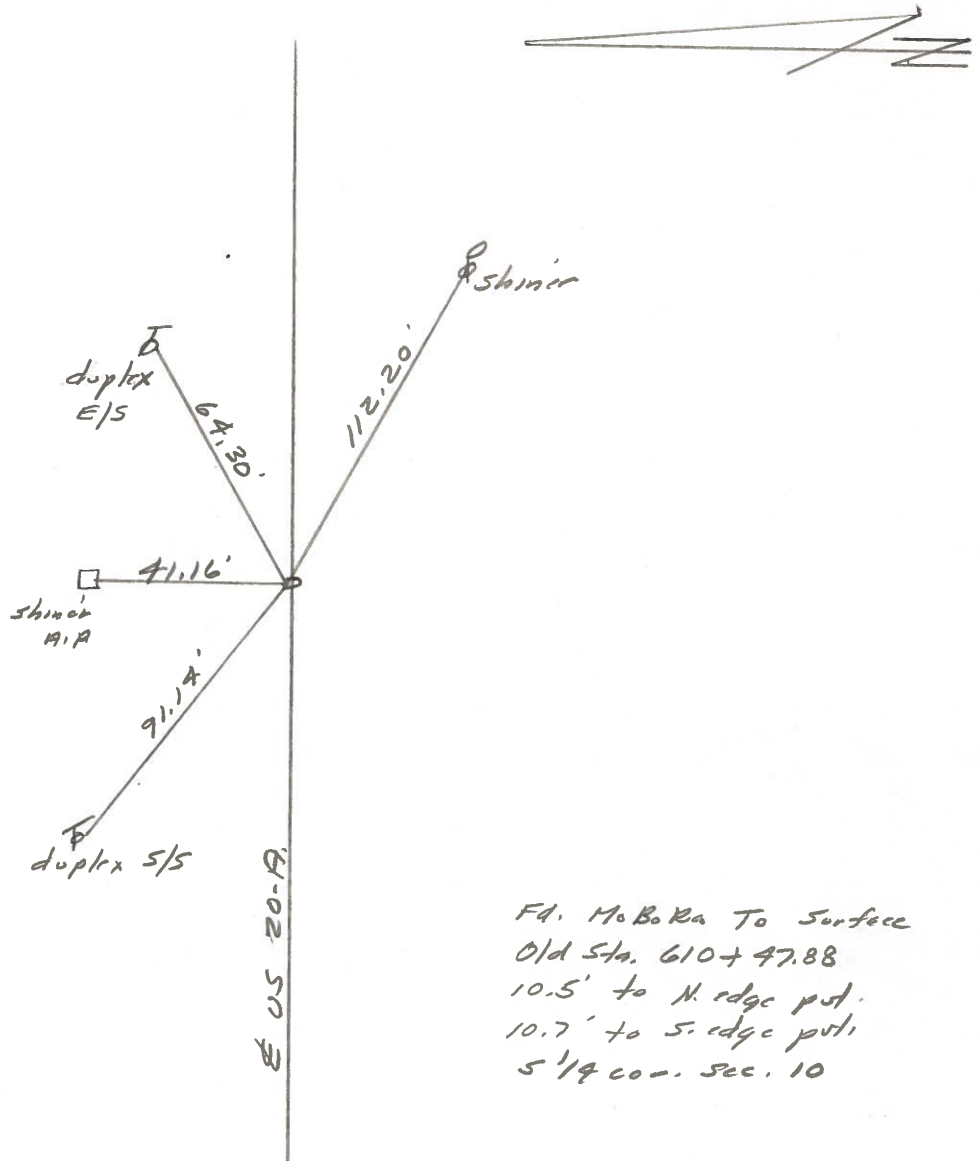
D. Curtis

D. Granata



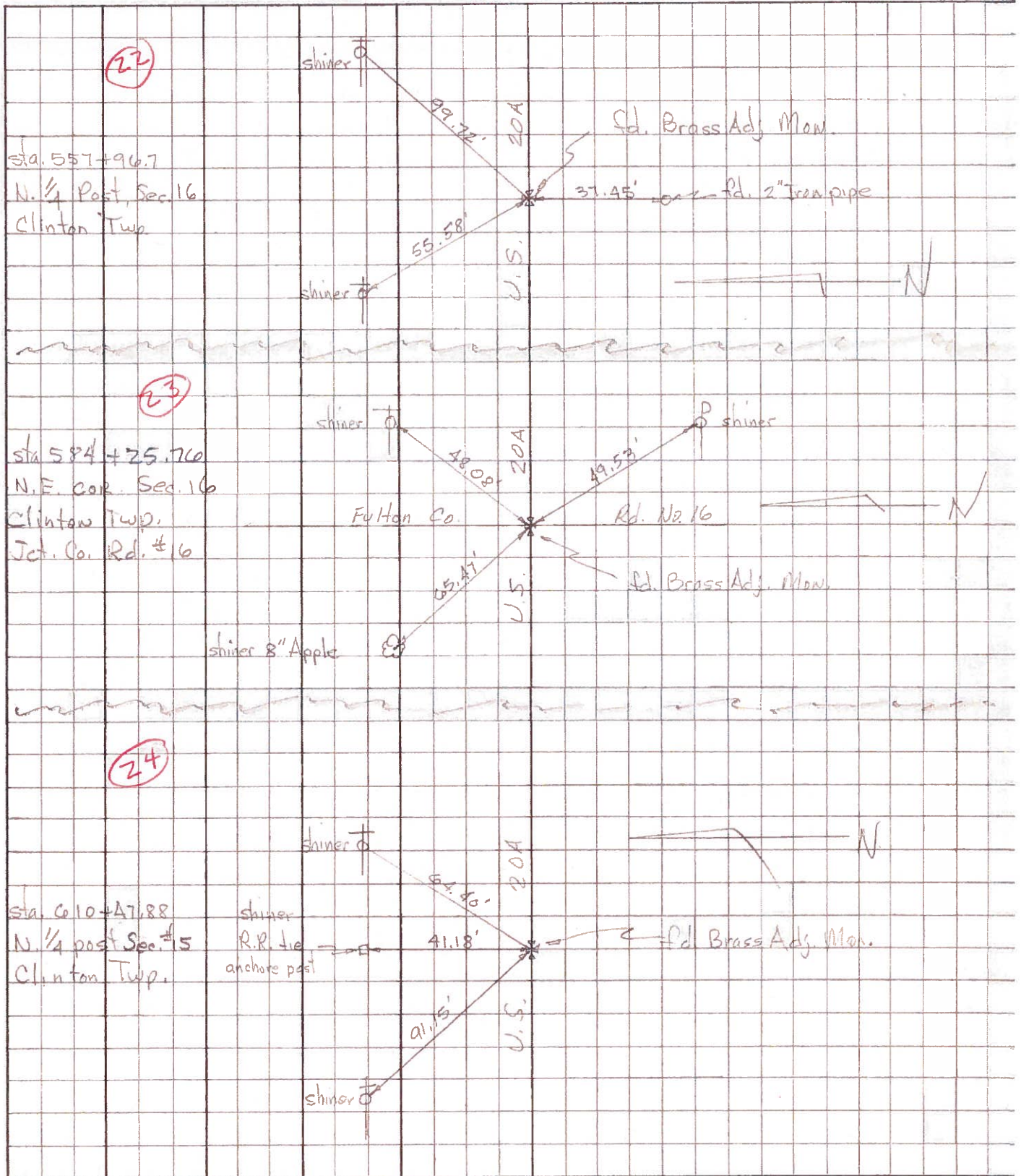
REF. NO. **24**

SLM BLKTOP STA. 610+40



PERSONNEL	TITLE	PERSONNEL	TITLE	COUNTY	DATE
Tomsic				Fulton	MARCH 21, 1971
Newser				S. R. U.S. 20A	WEATHER
Janya				SEC. CLINTON	TEMP.
Granata					

DESCRIPTION _____ LEFT _____ CENTER LINE _____ RIGHT _____ JOB NO. _____



PERSONNEL TITLE PERSONNEL TITLE

COUNTY Fulton

DATE OK-1-27-58

S. R. #20 Alt.

WEATHER

SEC.

TEMP.

DESCRIPTION

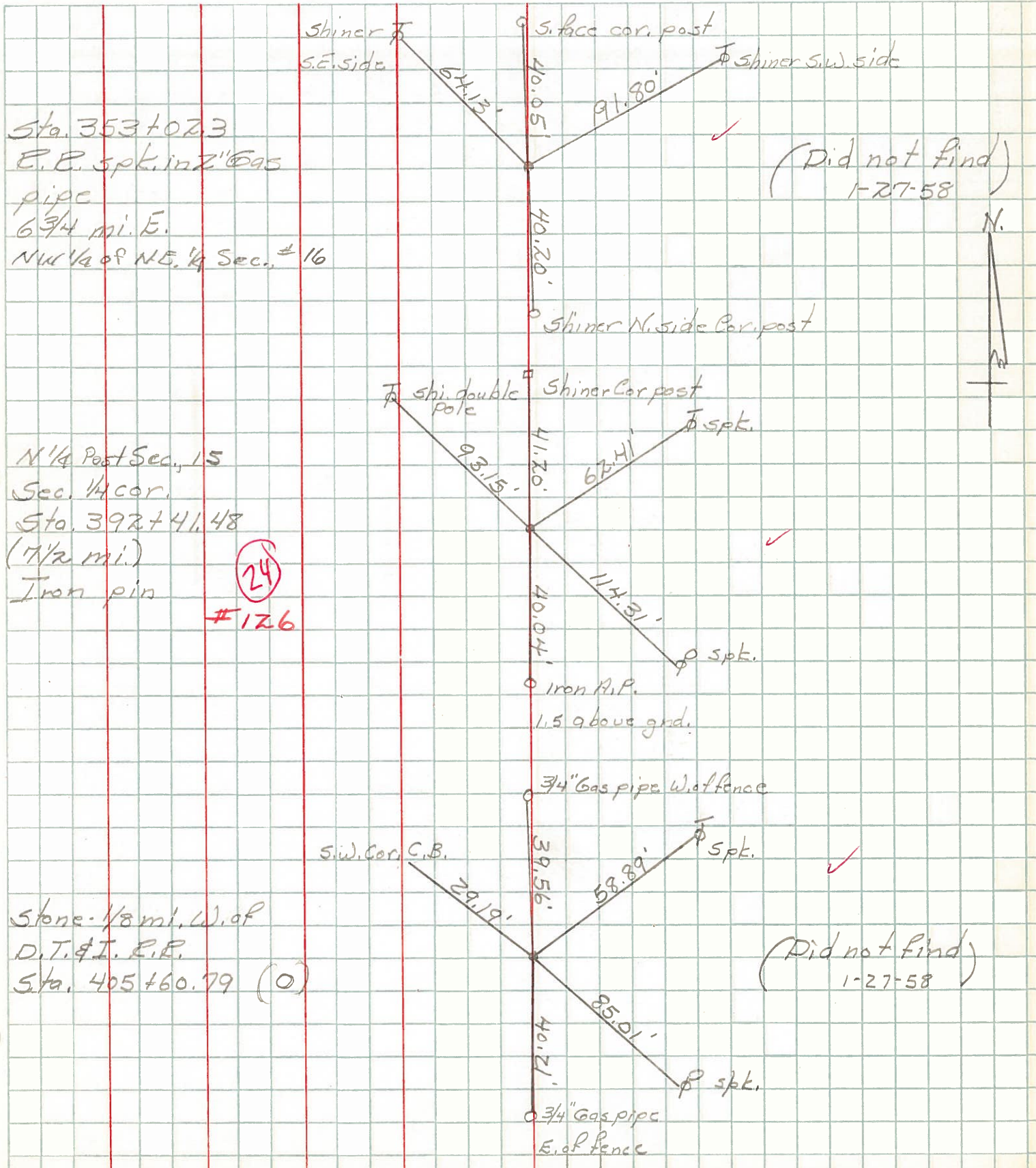
CLINTON TWP.

JOB NO.

LEFT

CENTER LINE

RIGHT



Sta. 353+02.3
 E.P. spt. in 2" gas
 pipe
 6 3/4 mi. E.
 NW 1/4 of NE 1/4 Sec. 16

(Did not find)
 1-27-58

N 1/4 Post Sec. 15
 Sec. 14 cor.
 Sta. 392+41.48
 (1 1/2 mi.)
 Iron pin

24
 #126

Stone 1/8 mi. W. of
 D.T. & I. R.R.
 Sta. 405+60.79 (0)

(Did not find)
 1-27-58