

O.D.O.T. DISTRICT 2 SURVEY OFFICE (USE ONLY)

PERSONNEL \_\_\_\_\_ REFERENCE NO. 24 A SHEET 47 OF 62  
 NOTES RHOADES DATE 7/18/18 ROUTE US 20A  
 H.C. RHOADES WEATHER CLOUDY COUNTY FULTON  
 R.C. TRENKA TEMP. 77° TOWNSHIP CLINTON  
 \_\_\_\_\_ LEU HAGEMEYER SECTION 10  
 DWG BY NASON PID 101232 T 7 N R 6 E

TYPE MONUMENT P.K./WASHER

ON SURFACE - ~~BELOW~~ ON \_\_\_\_\_

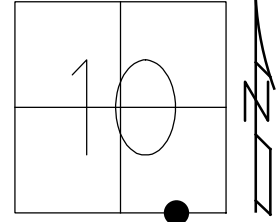
OFFSET Q PAVEMENT ON \_\_\_\_\_ LT : RT

10.1' TO LT EDGE PAVEMENT

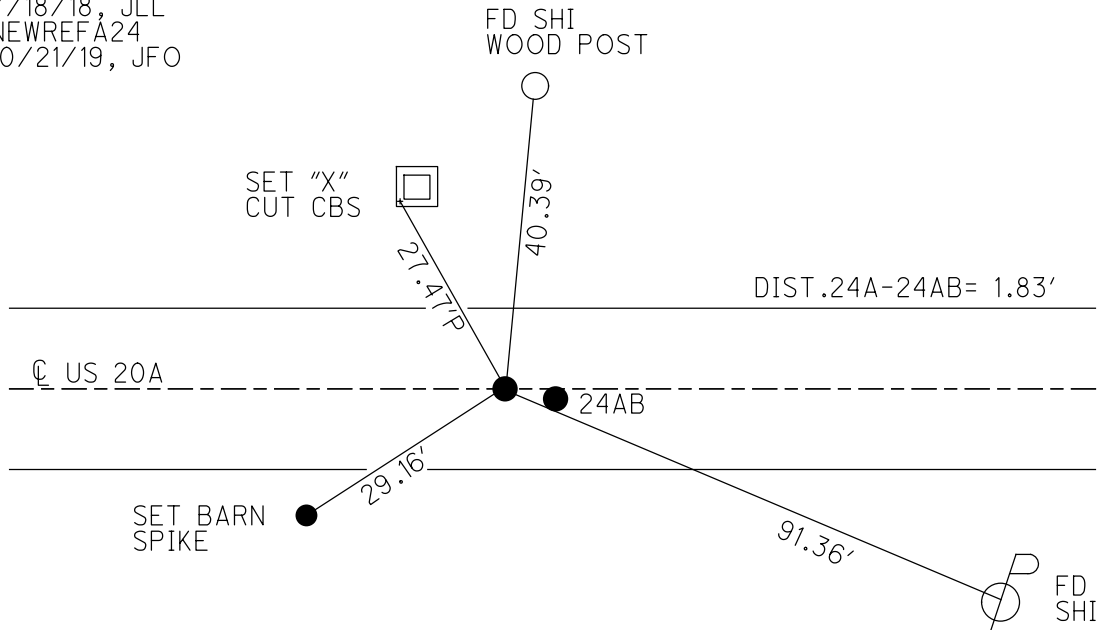
STATION: 623+57.93

HORZ.DATUM: NAD83(2011) GEOID: 2012A

GRID: NORTHING: 698891.139 EASTING: 1514682.702



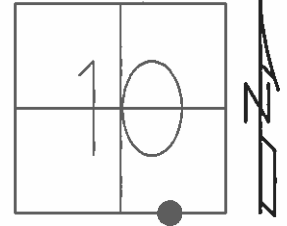
RECORD:  
 FD P.K./WASHER  
 6/6/02, DCH  
 SET MAG/WASHER  
 9/19/02, DCH  
 DNF  
 7/24/14, EBW  
 7/16/19, JFO  
 SET MAG/WASHER  
 7/18/18, JLL  
 NEWREFA24  
 10/21/19, JFO



**O.D.O.T. DISTRICT 2 SURVEY OFFICE (USE ONLY)**

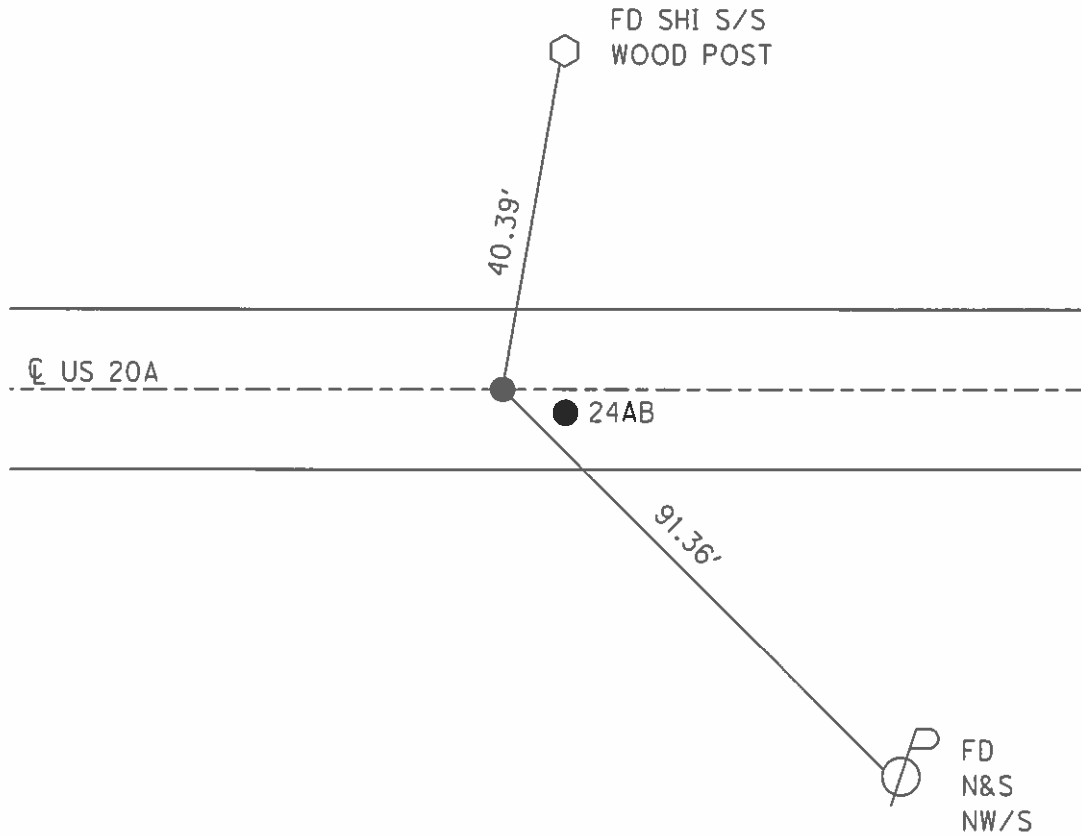
PERSONNEL	REFERENCE NO.	24 A	SHEET	46	OF	61
NOTES	MICHALAK	DATE	6/6/02	ROUTE	US 20A	
H.C.	HOMAN	WEATHER	CLOUDY	COUNTY	FULTON	
R.C.	MALINSKY	TEMP.	56°	TOWNSHIP	CLINTON	
				SECTION	10	
				T	7	N
				R	6	E

TYPE MONUMENT P.K./WASHER  
 ON SURFACE - ~~BELOW~~ ON \_\_\_\_\_  
 LEFT - ☉ PAV'T - RIGHT \_\_\_\_\_ ON \_\_\_\_\_  
 - TO - EDGE PAVEMENT  
 S.L.M. 623+59  
 GRID: NORTHING: \_\_\_\_\_ EASTING: \_\_\_\_\_



SET MAG/WASHER  
 9/19/02, DCH

NOTE: 1.83' BETWEEN POINTS



O.D.O.T. DISTRICT 2 SURVEY OFFICE

PERSONNEL

REFERENCE NO. 24A

SHEET 25 OF 30

NOTES MICHALAK

DATE 6-6-02

ROUTE U.S. 20-A

H.C. HOMAN

WEATHER CLOUDY

COUNTY FULTON

R.C. MALINSKY

TEMP. 56°

TOWNSHIP CLINTON

SECTION 10

T 7 N R 6 E

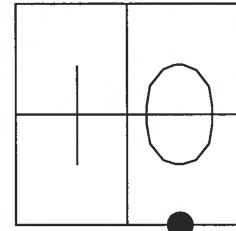
TYPE MONUMENT PK NAIL & WASHER

ON SURFACE - ~~BELOW~~ YES

~~LEFT~~ - ☉ PAV'T - RIGHT A 0.3' RT B ☉

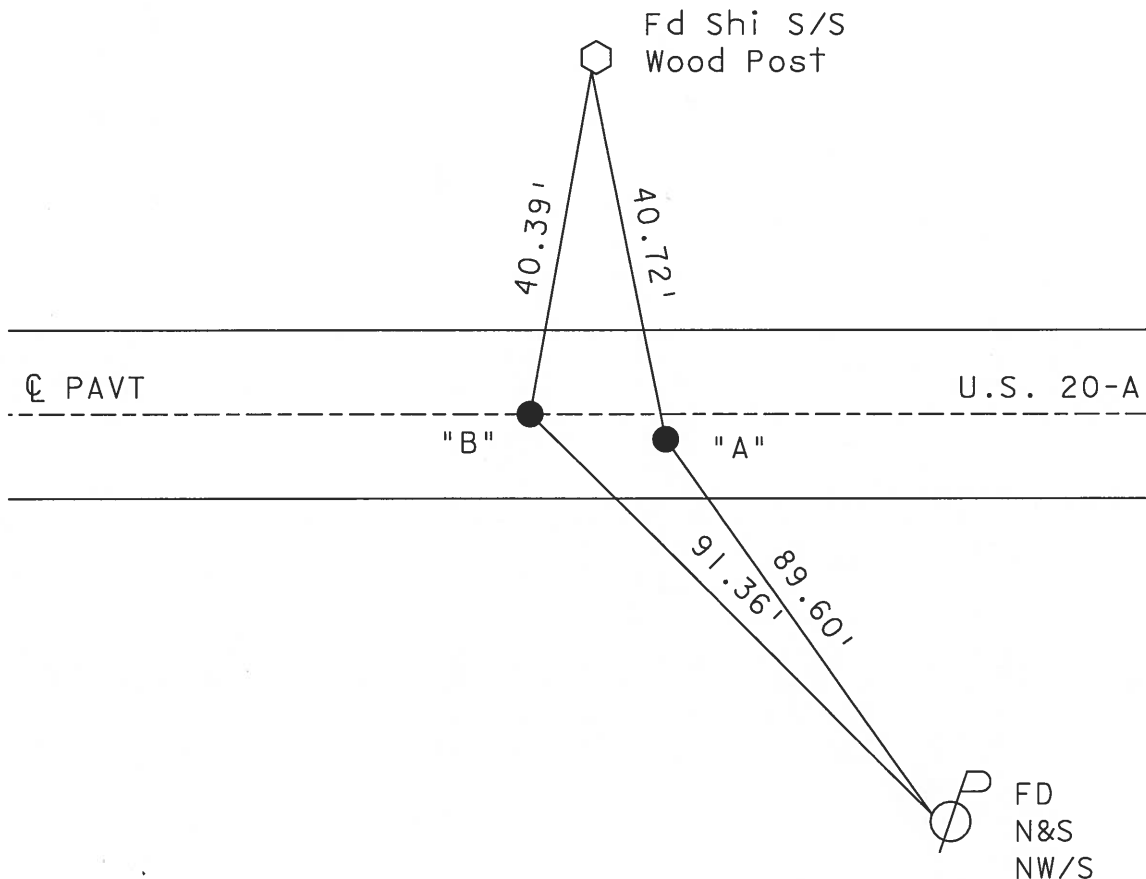
10.1 TO RT EDGE PAVEMENT

S.L.M. 623+59



"A" - Fits ODOT TIES  
 "B" Set By Others  
 1.83' Between Points

SET MAG NAIL  
 & WASHER  
 9-19-02  
 D.C.H.



# O.D.O.T. DISTRICT 2 SURVEY OFFICE

PERSONNEL \_\_\_\_\_

REFERENCE NO. 24-A

SHEET 25 OF 26

NOTES HOFFMAN

H.C. LOSHKES

R.C. \_\_\_\_\_

DATE 8-10-89

WEATHER CLEAR

TEMP. 75°

ROUTE US 20-A

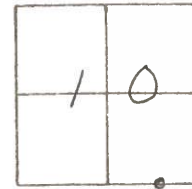
COUNTY FULTON

TOWNSHIP CLINTON

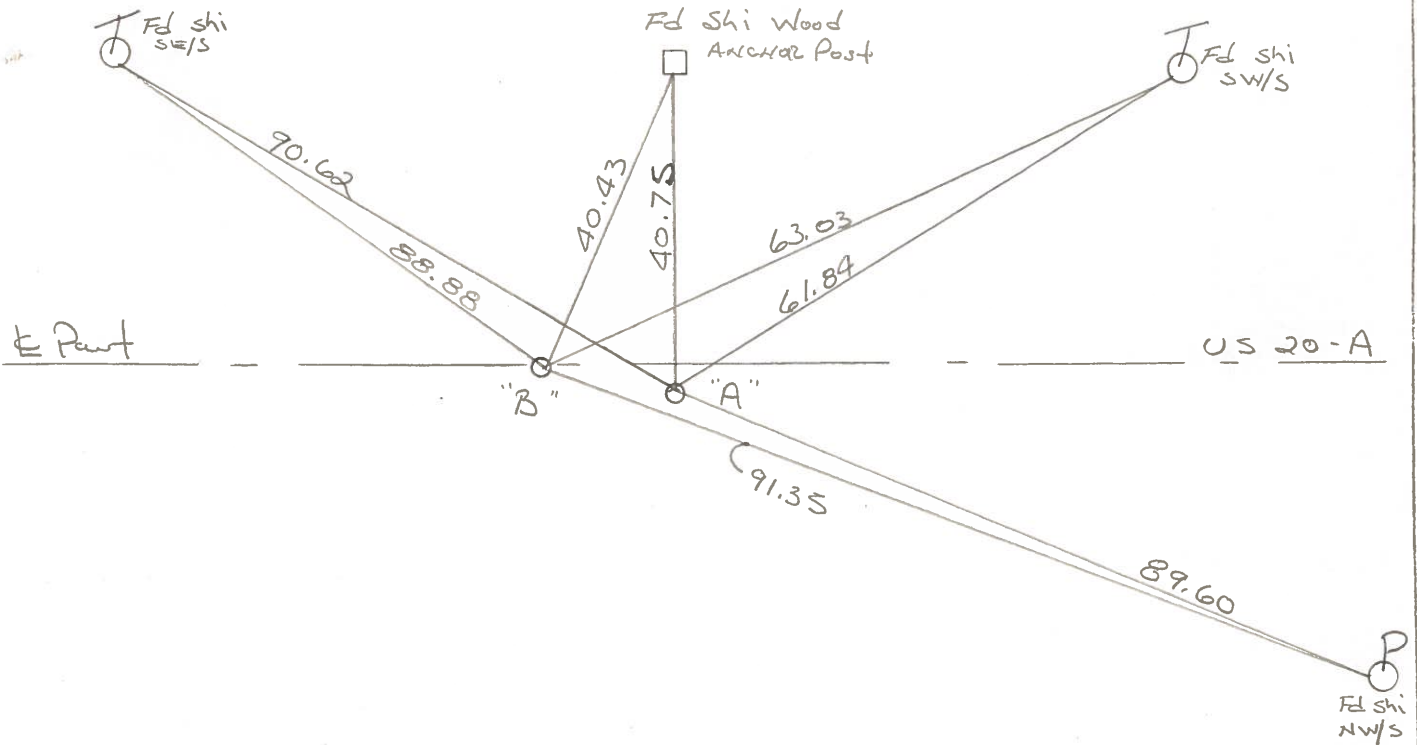
SECTION 10

T. 7 N. R 6 E

TYPE MONUMENT "A" SHANK of Nail - SMALL P.K. NAIL  
 ON SURFACE - BELOW yes - yes  
~~LEFT - & PAV'T. - RIGHT~~ 0.3' RT - &  
10.1 TO RT. EDGE PAVEMENT  
 S.L.M. 623+41



"A" Fd SHANK of Nail - FITS O.D.O.T. TIES - "B" Fd. SMALL P.K. BY OTHERS  
1.82' Between Points  
Set P.K. NAIL  
9-14-89 SWK  
Set P.K./WASHER  
9-15-89 SWK



County Fulton S.R. 0520A

Date 29 June 79

Township Clinton

Weather Cloudy

Section 10

Temp. 70°

T N, R E

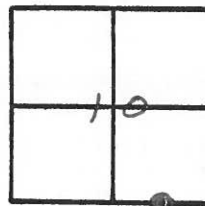
Personnel L. Stone

R. Michalak

P. Neuser

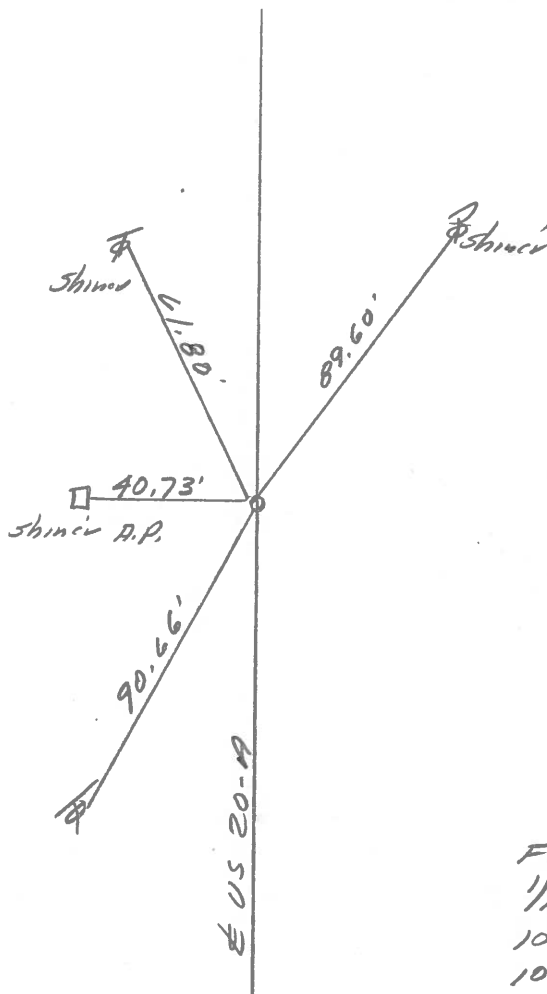
D. Curtis

D. Granatq



REF NO. 24-A

5L17 BLKTOP STA. 624458



Fd. Roofing Nail to Surface  
1/16 cov. sec. 10  
10.8' to N. edge put.  
10.9' to S. edge put.

PERSONNEL	TITLE	PERSONNEL	TITLE	COUNTY	DATE	WEATHER	TEMP.
Tomsic				Fulton	March 2, 1973		
Neuser				S. R. U.S. 20A			
Vanya				SEC. CLINTON			
Grangta							

DESCRIPTION \_\_\_\_\_ LEFT \_\_\_\_\_ CENTER LINE \_\_\_\_\_ RIGHT \_\_\_\_\_ JOB NO. \_\_\_\_\_

