

O.D.O.T. DISTRICT 2 SURVEY OFFICE (USE ONLY)

PERSONNEL

REFERENCE NO. 24 AB

SHEET 48 OF 62

NOTES RHOADES

DATE 7/18/18

ROUTE US 20A

H.C. RHOADES

WEATHER CLOUDY

COUNTY FUTLON

R.C. TRENKA

TEMP. 77°

TOWNSHIP CLINTON

LEU HAGEMeyer

SECTION 10

DWG BY NASON

PID 101232

T 7 N R 6 E

TYPE MONUMENT P.K./WASHER

ON SURFACE - ~~BELOW~~ ON

OFFSET \odot PAVEMENT 0.3' ~~LT~~ : RT

10.1' TO LT EDGE PAVEMENT

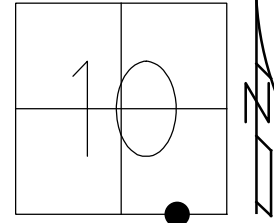
STATION: 623+59.76

HORZ.DATUM: NAD83(2011)

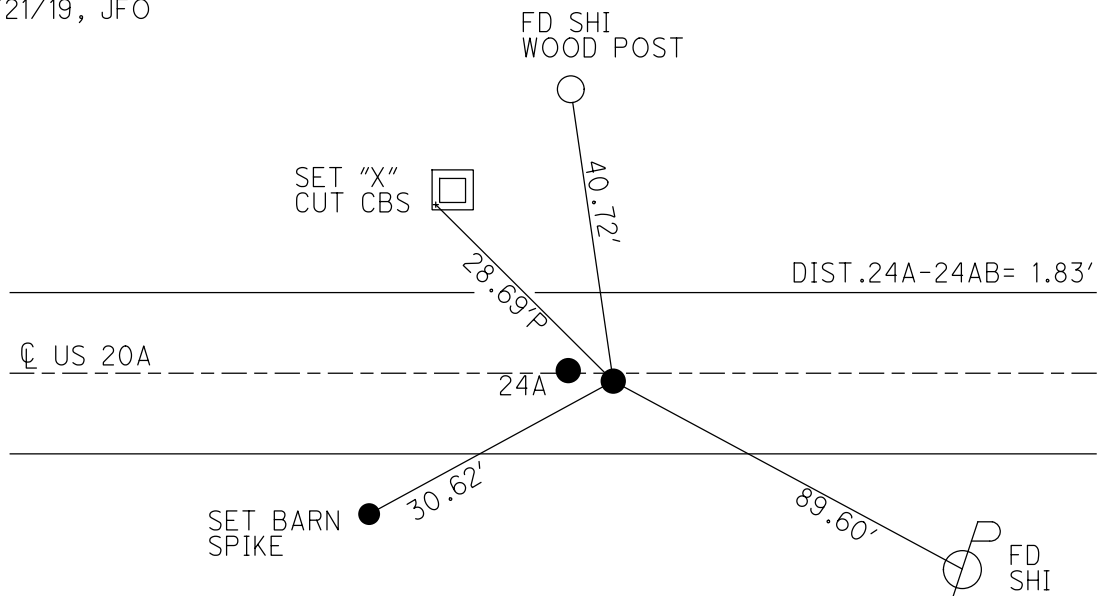
GEOID: 2012A

GRID: NORTHING: 698890.820

EASTING: 1514684.495



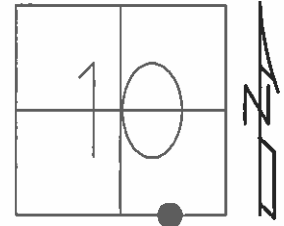
RECORD:
 FD P.K./WASHER
 6/6/02, DCH
 SET MAG/WASHER
 9/19/02, DCH
 FD MAG/WASHER
 7/16/19, JFO
 SET MAG/WASHER
 NEWREFAB24
 10/21/19, JFO



O.D.O.T. DISTRICT 2 SURVEY OFFICE (USE ONLY)

PERSONNEL _____ REFERENCE NO. 24 AB SHEET 47 OF 61
 NOTES MICHALAK DATE 6/6/02 ROUTE US 20A
 H.C. HOMAN WEATHER CLOUDY COUNTY FULTON
 R.C. MALINSKY TEMP. 56° TOWNSHIP CLINTON
 SECTION 10
 T 7 N R 6 E

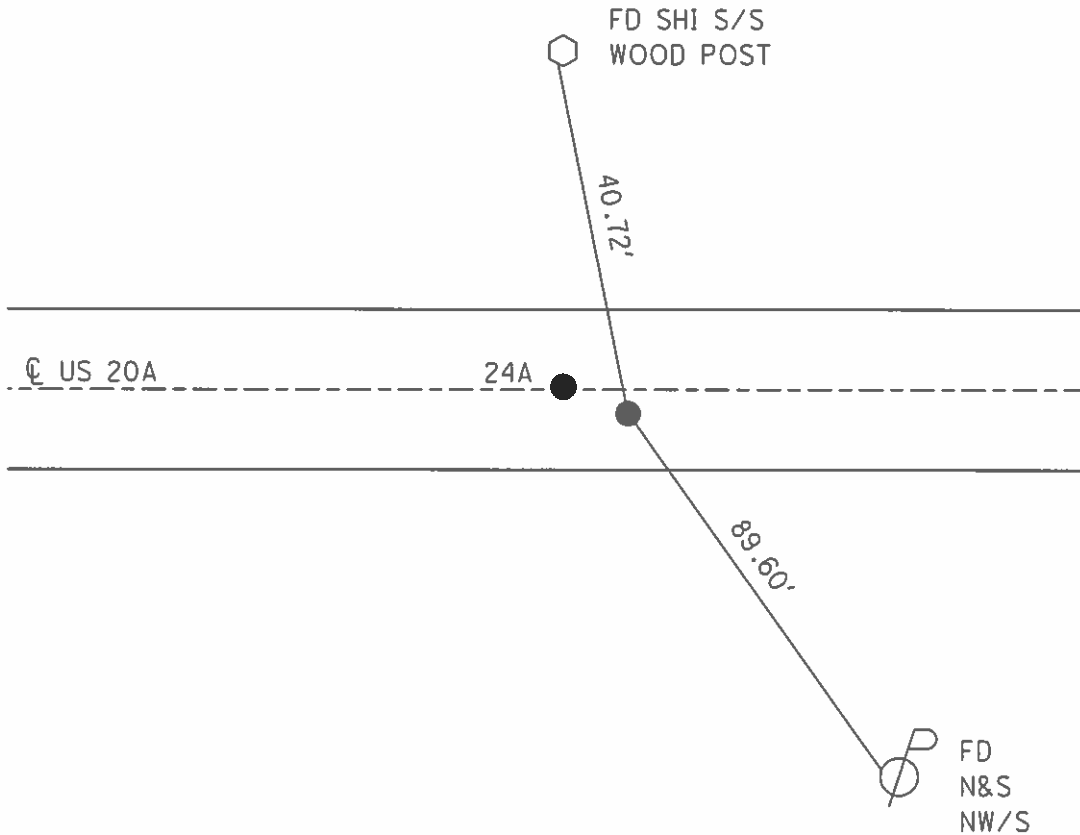
TYPE MONUMENT P.K./WASHER
 ON SURFACE - ~~BELOW~~ ON _____
~~LEFT~~ - ☉ PAV'T - RIGHT 0.3'
10.1' TO RT EDGE PAVEMENT
 S.L.M. 623+61



GRID: NORTHING: _____ EASTING: _____

SET MAG/WASHER
 9/19/02, DCH

NOTE: 1.83' BETWEEN POINTS



O.D.O.T. DISTRICT 2 SURVEY OFFICE

PERSONNEL

REFERENCE NO. 24A

SHEET 25 OF 30

NOTES MICHALAK

DATE 6-6-02

ROUTE U.S. 20-A

H.C. HOMAN

WEATHER CLOUDY

COUNTY FULTON

R.C. MALINSKY

TEMP. 56°

TOWNSHIP CLINTON

SECTION 10

T 7 N R 6 E

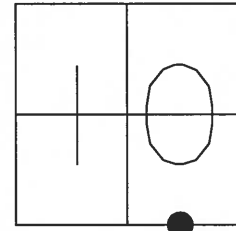
TYPE MONUMENT PK NAIL & WASHER

ON SURFACE - ~~BELOW~~ YES

~~LEFT~~ - ☉ PAV'T - RIGHT A 0.3' RT B ☉

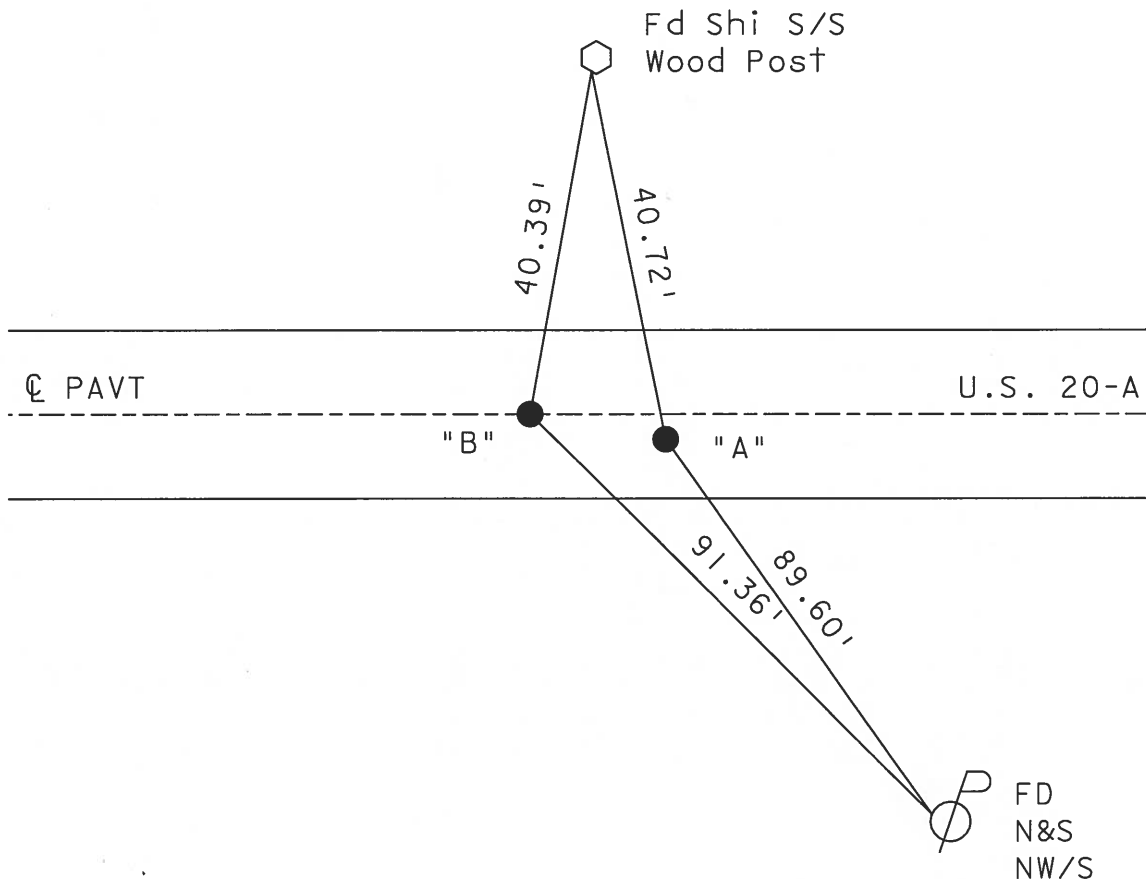
10.1 TO RT EDGE PAVEMENT

S.L.M. 623+59



"A" - Fits ODOT TIES
 "B" Set By Others
 1.83' Between Points

SET MAG NAIL
 & WASHER
 9-19-02
 D.C.H.



O.D.O.T. DISTRICT 2 SURVEY OFFICE

PERSONNEL

REFERENCE NO. 24-A

SHEET 25 OF 26

NOTES HOFFMAN

H.C. LOSHKES

R.C. _____

DATE 8-10-89

WEATHER CLEAR

TEMP. 75°

ROUTE US 20-A

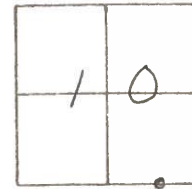
COUNTY FULTON

TOWNSHIP CLINTON

SECTION 10

T. 7 N. R. 6 E

TYPE MONUMENT "A" SHANK of Nail - SMALL P.K. NAIL
 ON SURFACE - BELOW yes - yes
~~LEFT - & PAV'T. - RIGHT~~ 0.3' RT - &
10.1 TO RT. EDGE PAVEMENT
 S.L.M. 623+41



"A" Fd SHANK of Nail - FITS O.D.O.T. TIES - "B" Fd. SMALL P.K. BY OTHERS
1.82' Between Points
Set P.K. NAIL
9-14-89 SWK
Set P.K./WASHER
9-15-89 SWK

