

O.D.O.T. DISTRICT 2 SURVEY OFFICE (USE ONLY)

PERSONNEL

REFERENCE NO. 24 B

SHEET 49 OF 62

NOTES MICHALAK  
H.C. HOMAN  
R.C. MALINSKY

DATE 6/6/02  
WEATHER CLOUDY  
TEMP. 56°

ROUTE US 20A  
COUNTY FULTON  
TOWNSHIP CLINTON  
SECTION 10  
T 7 N R 6 E

DWG BY NASON PID 101232

TYPE MONUMENT P.K.NAIL

ON SURFACE - ~~BELOW~~ ON

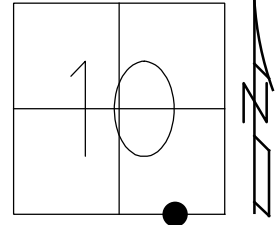
OFFSET  $\phi$  PAVEMENT ON LT : RT

10.1' TO LT EDGE PAVEMENT

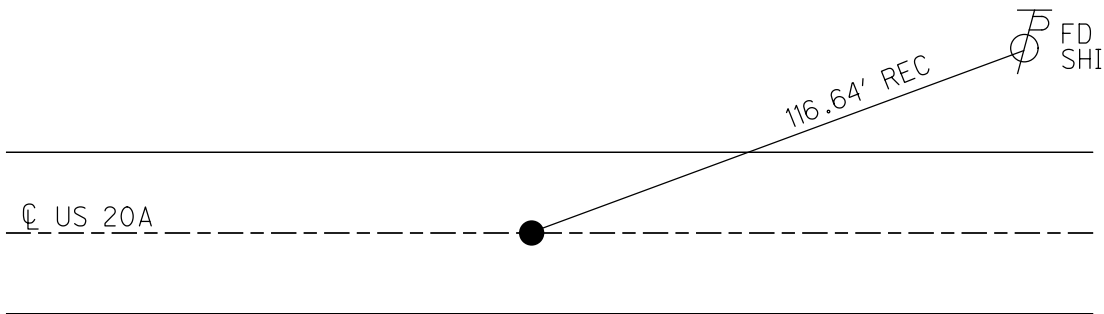
STATION: 625+67

HORZ.DATUM: \_\_\_\_\_ GEOID: \_\_\_\_\_

GRID: NORTHING: \_\_\_\_\_ EASTING: \_\_\_\_\_



RECORD:  
FD P.K. NAIL  
7/24/14, EBW  
DNF  
7/18/18, JLL



O.D.O.T. DISTRICT 2 SURVEY OFFICE (USE ONLY)

PERSONNEL

REFERENCE NO. 24 B

SHEET 48 OF 61

NOTES MICHALAK

DATE 6/6/02

ROUTE US 20A

H.C. HOMAN

WEATHER CLOUDY

COUNTY FULTON

R.C. MALINSKY

TEMP. 56°

TOWNSHIP CLINTON

SECTION 10

T 7 N R 6 E

TYPE MONUMENT P.K.NAIL

ON SURFACE - ~~BELOW~~ ON

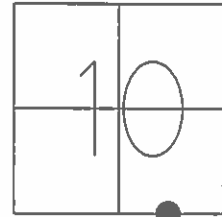
LEFT - ☉ PAV'T - RIGHT ON

10.1' TO RT EDGE PAVEMENT

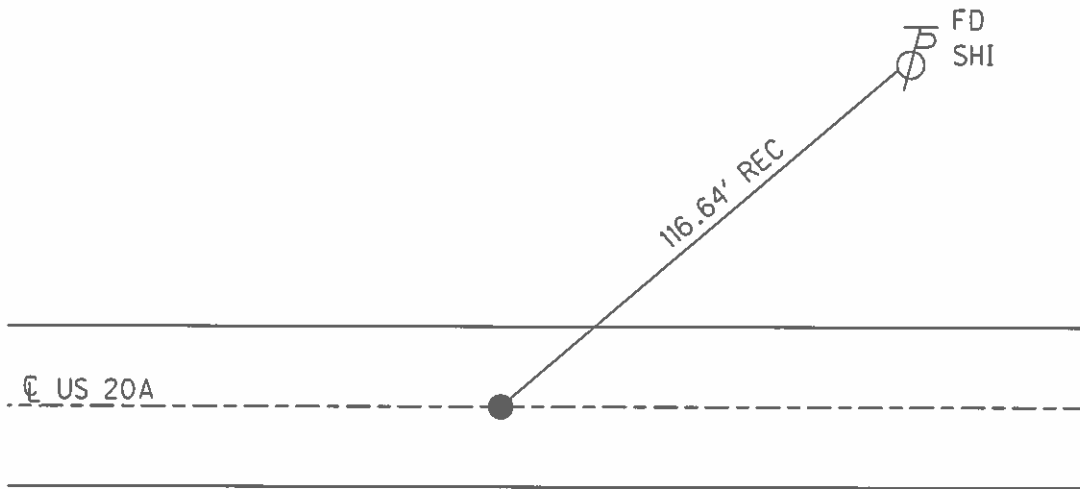
S.L.M. 625+67

GRID: NORTHING: \_\_\_\_\_

EASTING: \_\_\_\_\_



FD P.K. NAIL  
SET BY OTHERS



O.D.O.T. DISTRICT 2 SURVEY OFFICE

PERSONNEL

REFERENCE NO. 24B

SHEET 26 OF 30

NOTES MICHALAK

DATE 6-6-02

ROUTE U.S. 20-A

H.C. HOMAN

WEATHER CLOUDY

COUNTY FULTON

R.C. MALINSKY

TEMP. 56°

TOWNSHIP CLINTON

SECTION 10

T 7 N R 6 E

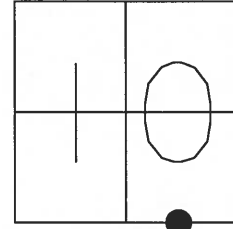
TYPE MONUMENT PK NAIL

ON SURFACE - ~~BELOW~~ YES

~~LEFT - C PAV'T - RIGHT~~ YES

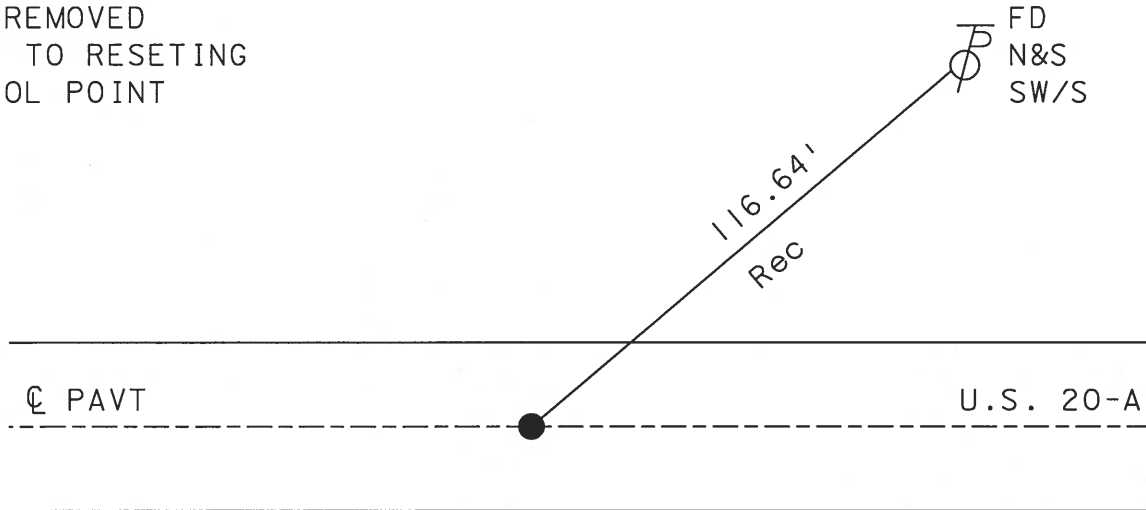
10.1 TO RT EDGE PAVEMENT

S.L.M. 625+67



PK SET" By Others'

NEED TO DIG  
CONTROL HUBS  
WERE REMOVED  
PRIOR TO RESETTING  
CONTROL POINT



# O.D.O.T. DISTRICT 2 SURVEY OFFICE

PERSONNEL \_\_\_\_\_

REFERENCE NO. 24-B SHEET 26 OF 26

NOTES HOFFMAN

H.C. LOSHRKE

R.C. \_\_\_\_\_

DATE 8-10-89

WEATHER CLEAR

TEMP. 75°

ROUTE US 20-A

COUNTY FULTON

TOWNSHIP CLINTON

SECTION 10

T 7 N R 6 E

TYPE MONUMENT P.K. Nail

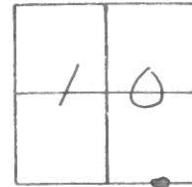
Set P.K. Nail  
9-15-89 SWH

ON SURFACE - ~~BELOW~~ YES

~~LEFT~~ & ~~PAN'T.~~ - ~~RIGHT~~ YES

10.4 TO RT. EDGE PAVEMENT

S.L.M. 625 + 49



P.K. "By OTHERS" - IN CENTER OF LARGE WHITE "+" FOR AERIAL SURVEY

