

O.D.O.T. DISTRICT 2 SURVEY OFFICE (USE ONLY)

PERSONNEL

REFERENCE NO. 26

SHEET 51 OF 62

NOTES MILLER

DATE 7/16/19

ROUTE US 20A

H.C. O'DONNELL

WEATHER CLOUDY

COUNTY FULTON

R.C. AUBLE

TEMP. 78°

TOWNSHIP CLINTON

RHOADES

DWG BY NASON

PID 101232

SECTION 11

T 7 N R 6 E

TYPE MONUMENT MAG/WASHER

ON SURFACE - ~~BELOW~~ ON

OFFSET 1' LT : ~~RT~~

- TO - EDGE PAVEMENT

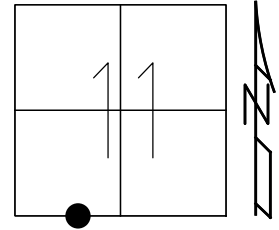
STATION: 651+08.75

HORZ.DATUM: NAD83(2011)

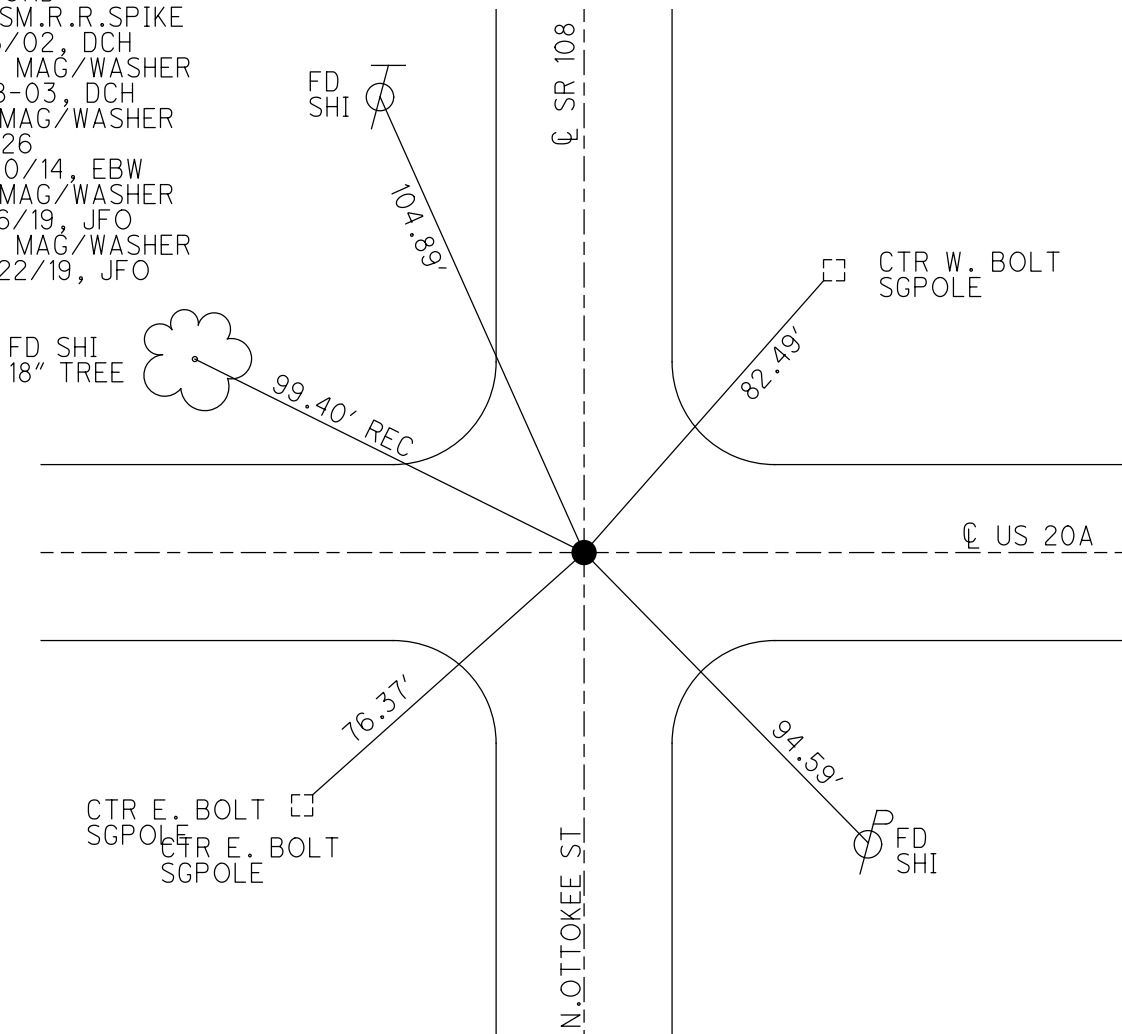
GEOID: 2012A

GRID: NORTHING: 698881.519

EASTING: 1517433.498



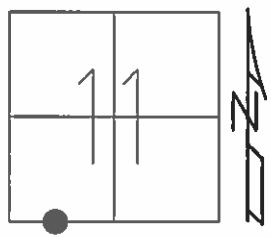
RECORD:
 FD SM.R.R.SPIKE
 6/6/02, DCH
 SET MAG/WASHER
 7-18-03, DCH
 FD MAG/WASHER
 REF26
 9/30/14, EBW
 FD MAG/WASHER
 7/16/19, JFO
 SET MAG/WASHER
 10/22/19, JFO



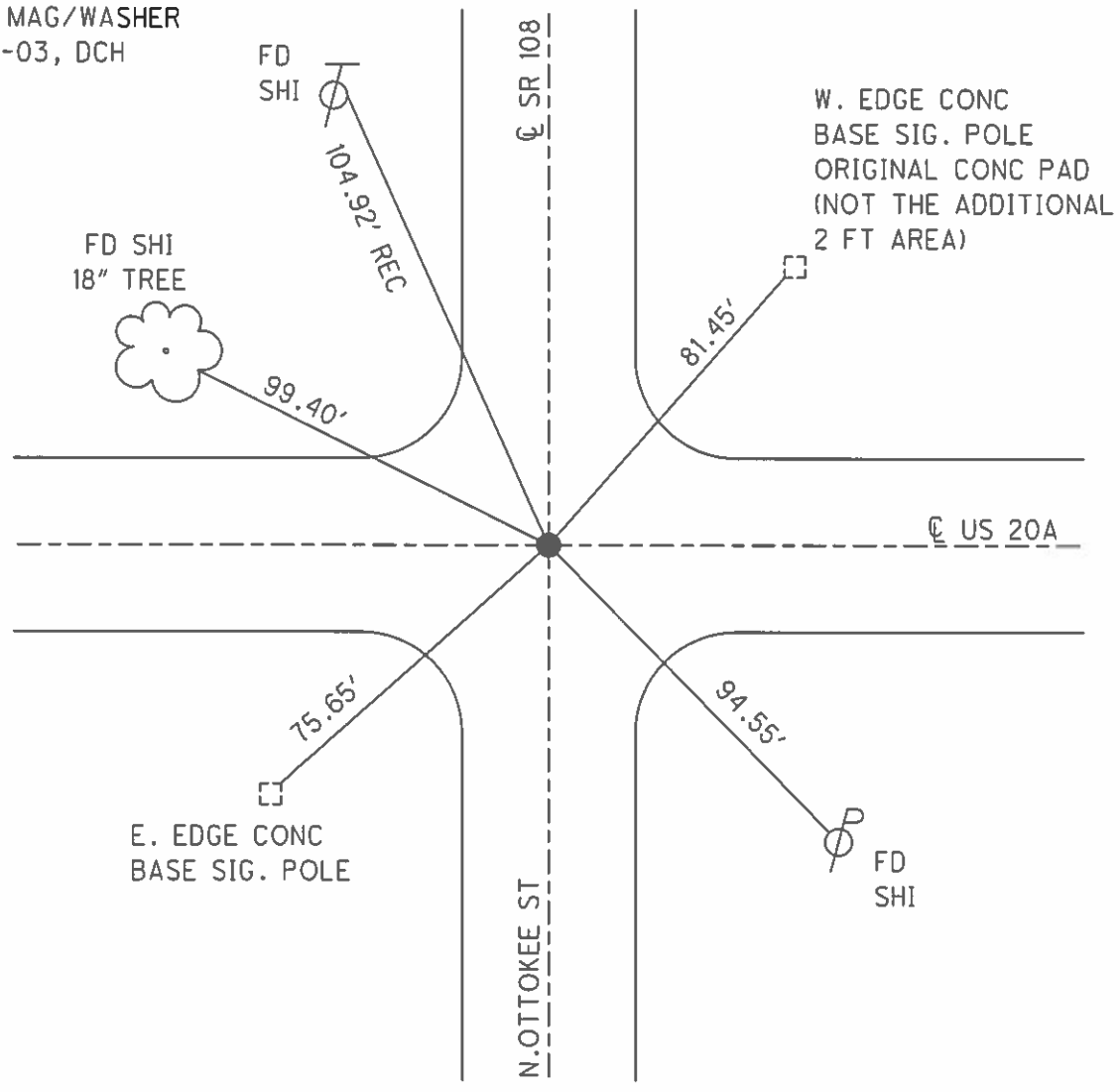
O.D.O.T. DISTRICT 2 SURVEY OFFICE (USE ONLY)

PERSONNEL _____ REFERENCE NO. 26 SHEET 50 OF 61
 NOTES MICHALAK DATE 6/6/02 ROUTE US 20A
 H.C. HOMAN WEATHER RAIN COUNTY FULTON
 R.C. MALINSKY TEMP. 56° TOWNSHIP CLINTON
 SECTION 11
T 7 N R 6 E

TYPE MONUMENT SM.R.R.SPIKE
 ON SURFACE - ~~BELOW~~ ON _____
 LEFT - ☉ PAV'T - RIGHT ON _____
 - TO - EDGE PAVEMENT
 S.L.M. 651+09
 GRID: NORTHING: _____ EASTING: _____



SET MAG/WASHER
 7-18-03, DCH



W. EDGE CONC
 BASE SIG. POLE
 ORIGINAL CONC PAD
 (NOT THE ADDITIONAL
 2 FT AREA)

E. EDGE CONC
 BASE SIG. POLE

N. OTTOKEE ST

O.D.O.T. DISTRICT 2 SURVEY OFFICE

PERSONNEL

REFERENCE NO. 26

SHEET 28 OF 30

NOTES MICHALAK

DATE 6-6-02

ROUTE U.S. 20-A

H.C. HOMAN

WEATHER RAIN

COUNTY FULTON

R.C. MALINSKY

TEMP. 56°

TOWNSHIP CLINTON

SECTION 11

T 7 N R 6 E

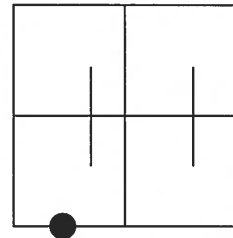
TYPE MONUMENT SMALL RR SPIKE

ON SURFACE - ~~BELOW~~ YES

~~LEFT - C PAV'T - RIGHT~~ YES

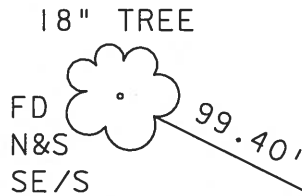
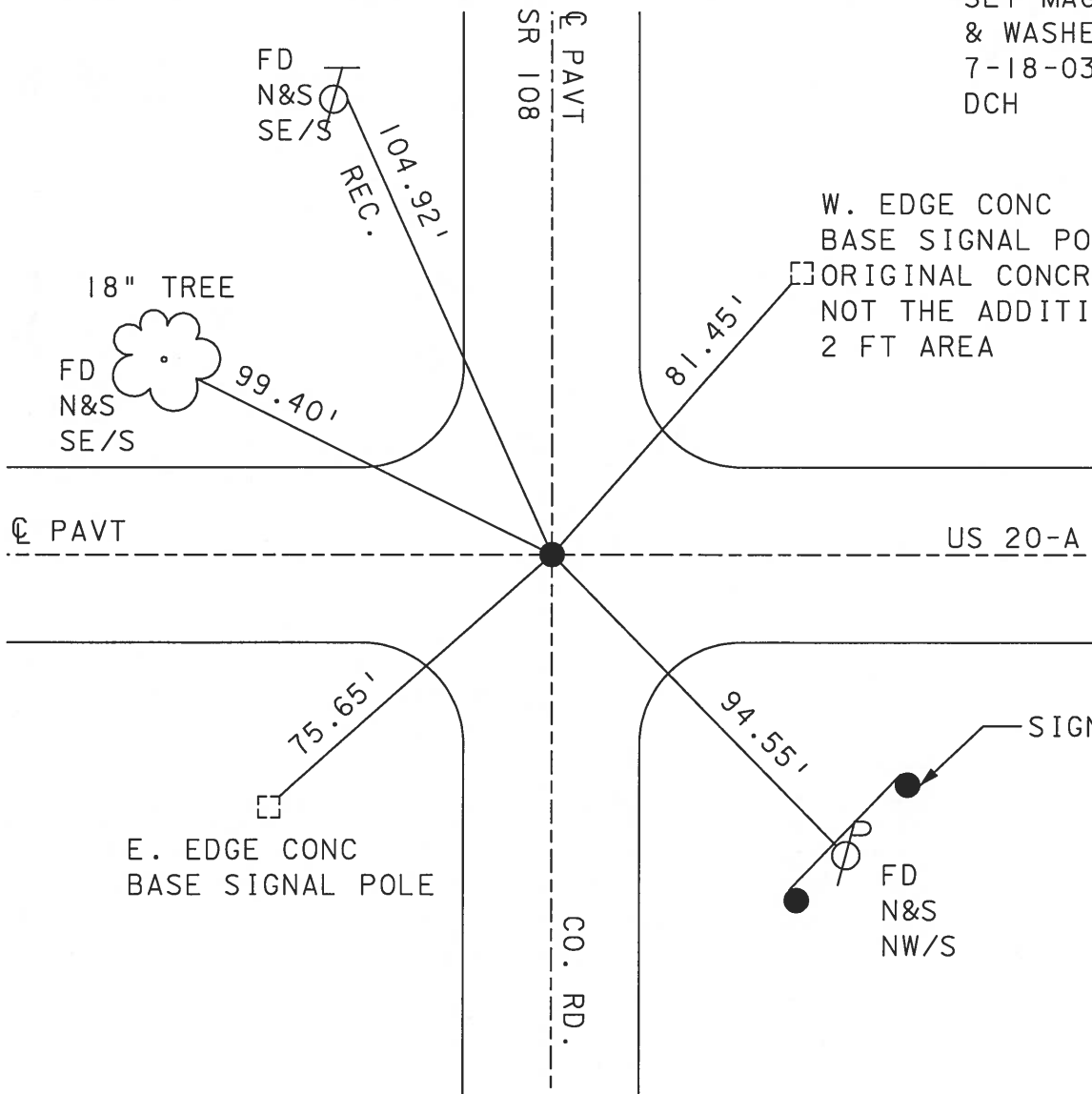
TO EDGE PAVEMENT

S.L.M. 651+09



SET MAG NAIL
& WASHER
7-18-03
DCH

W. EDGE CONC
BASE SIGNAL POLE
ORIGINAL CONCRTE PAD
NOT THE ADDITIONAL
2 FT AREA



O.D.O.T. DISTRICT 2 SURVEY OFFICE

PERSONNEL

REFERENCE NO. 26

SHEET 2 OF 24

NOTES 1. Stone

H.C. D. Curtis

DATE 16 Sept. 86

ROUTE US#20-19

R.C. J. Hauschalter

WEATHER Fair

COUNTY Fulton

TEMP. 50°

TOWNSHIP Clinton

SECTION 11

T R

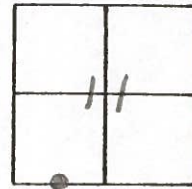
TYPE MONUMENT Small RR Spk.

ON SURFACE - BELOW Surface

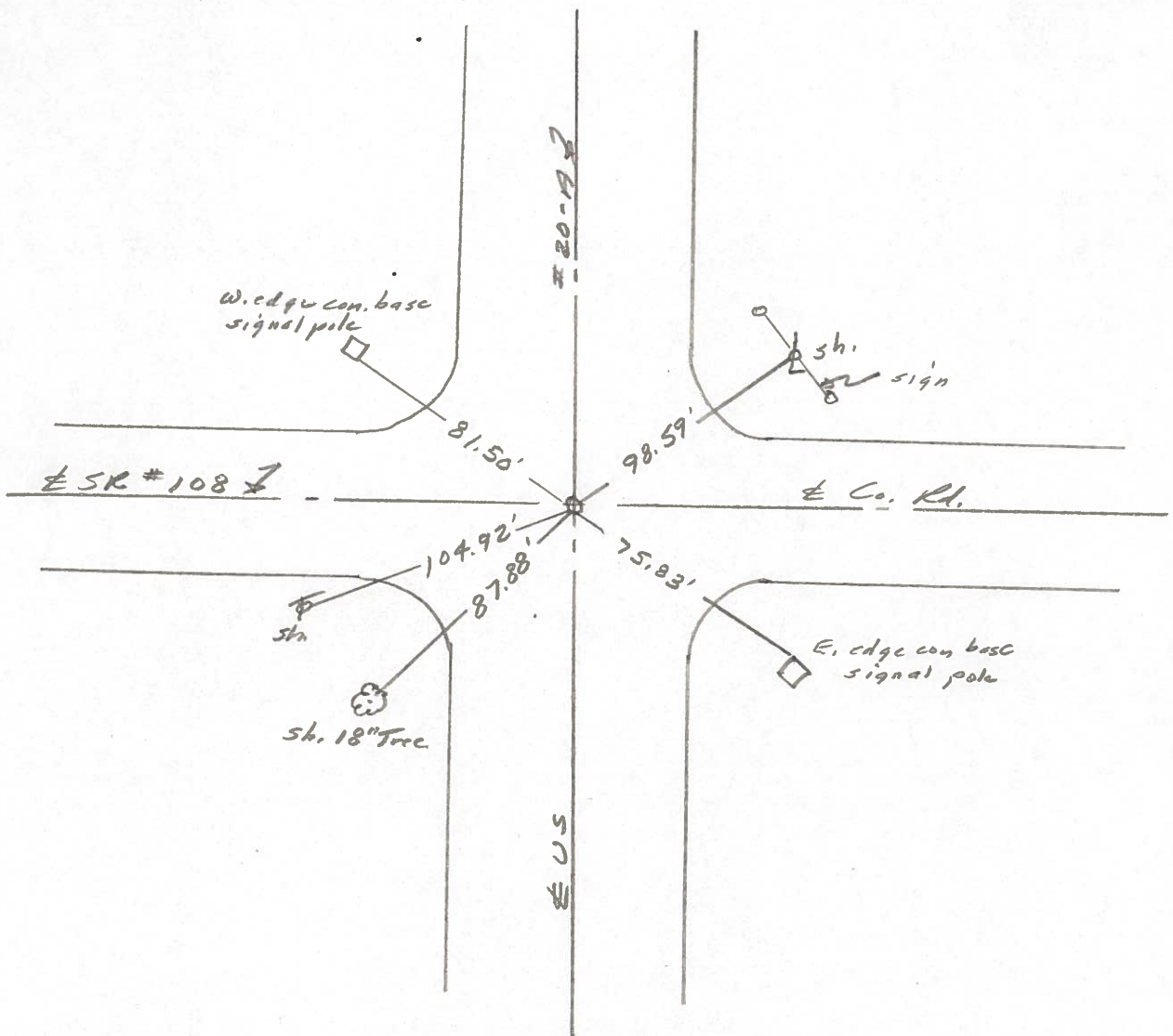
LEFT- & PAV'T. - RIGHT

TO EDGE PAVEMENT

S.L.M. 651+56



SET SMALL R.R. SPK. TO SURFACE
4-29-88



County FULTON S.R. 108 & U.S. 20-A

Date 3-28-80

Township CLINTON

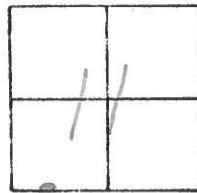
Weather CLOUDY

Section 11

Temp. +40°

T N, R E

Personnel STONE



#26

&
CREW

FD. BRASS MON.

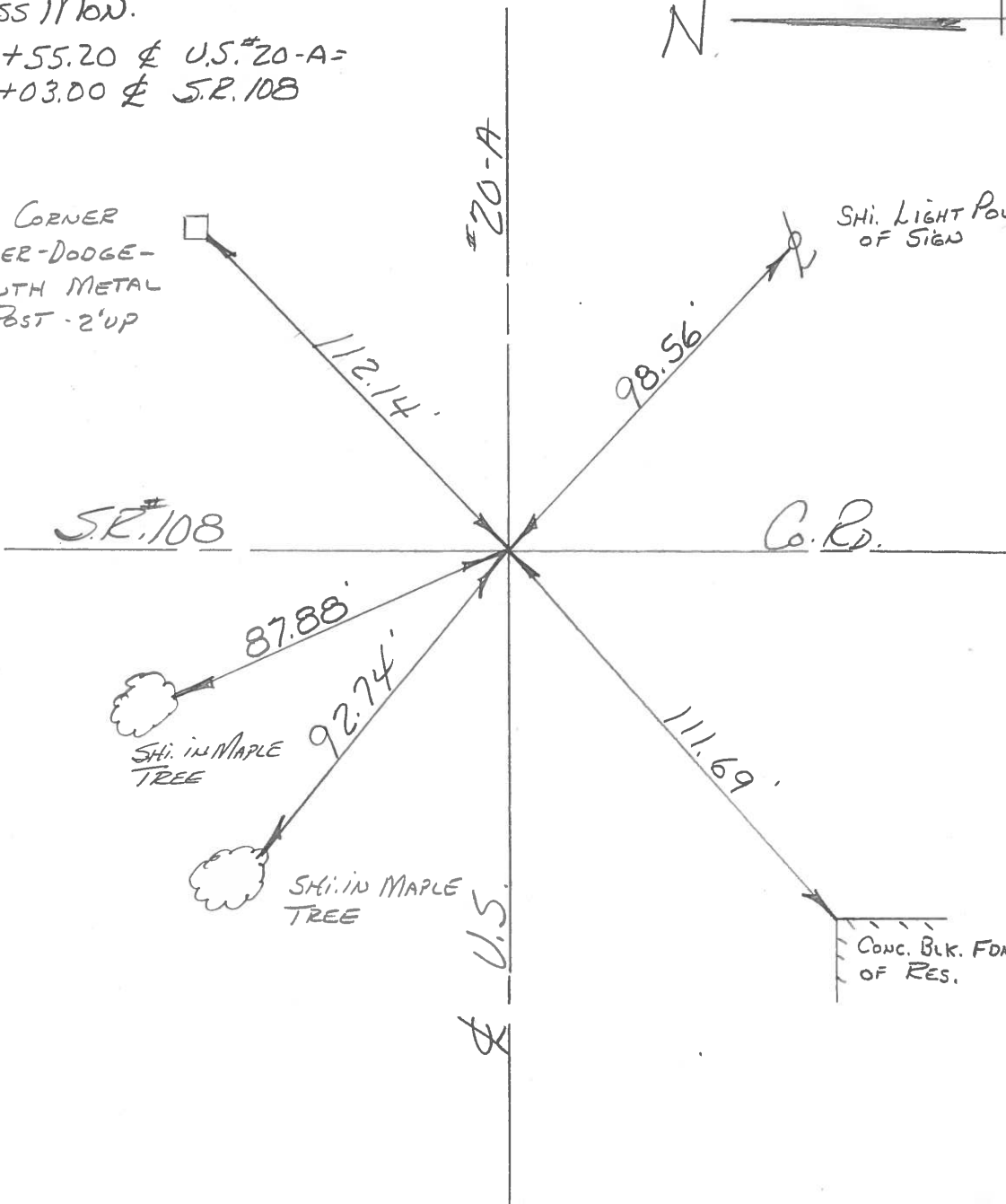
STA. 651+55.20 & U.S. #20-A =
STA. 340+03.00 & S.R. 108



NEAR CORNER
CHRYSLER-DODGE-
PLYMOUTH METAL
SIGN POST - 2' UP



SHI. LIGHT POLE
OF SIGN



S.R. #108

#20-A

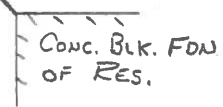
C.P.



SHI. IN MAPLE
TREE



SHI. IN MAPLE
TREE

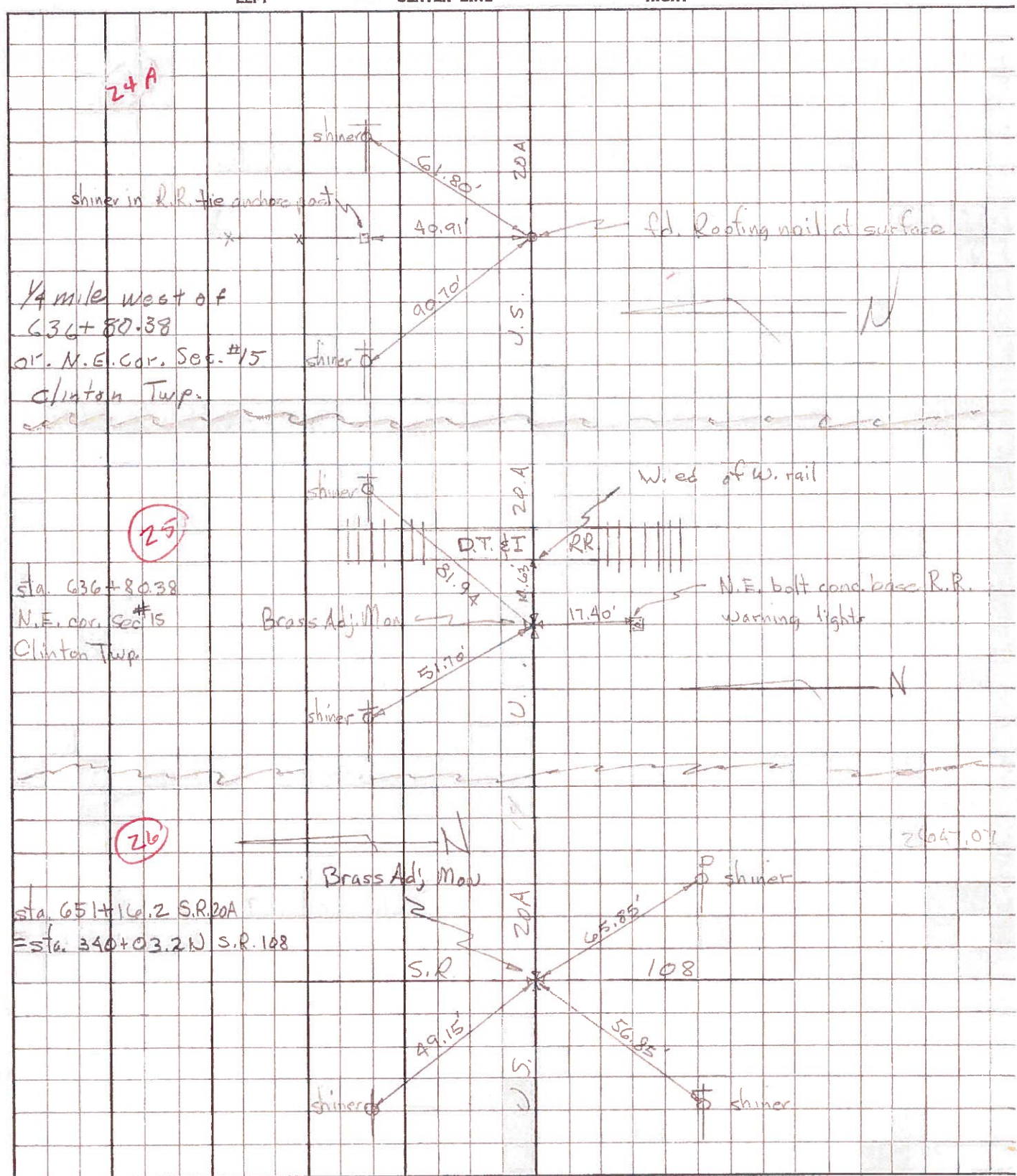


CONC. BLK. FDN
OF RES.

U.S.

PERSONNEL TITLE PERSONNEL TITLE COUNTY Fulton DATE March 21, 1973
Tomic _____
Neuser _____ S. R. U.S. 20A WEATHER _____
Nanya _____
Granta _____ SEC. CLINTON TEMP. _____

DESCRIPTION LEFT CENTER LINE RIGHT JOB NO. _____



PERSONNEL TITLE PERSONNEL TITLE

COUNTY Fulton

DATE 1-27-58

S. R. # 20 Alt.

WEATHER

SEC.

TEMP.

DESCRIPTION

LEFT

CENTER LINE

RIGHT

JOB NO.

NE. Cor. Sec. # 15

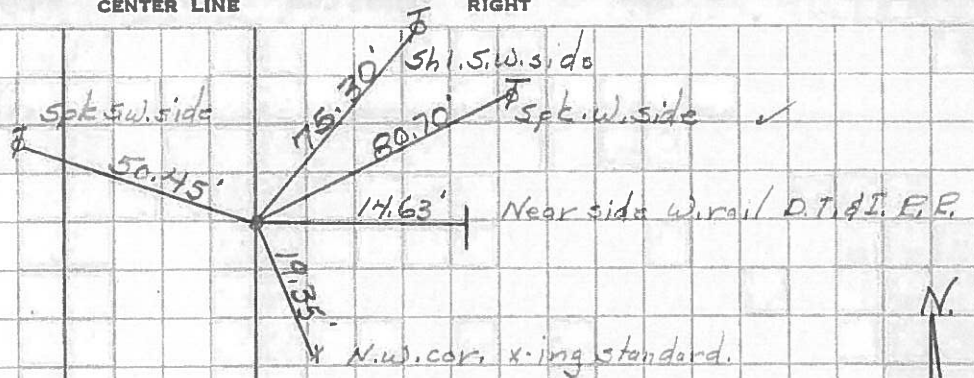
Sec. Cor.

Sta. 418+73.98

(8 mi.)

3/4" Gas pipe - fd. E.R. spt.

(25)
#127



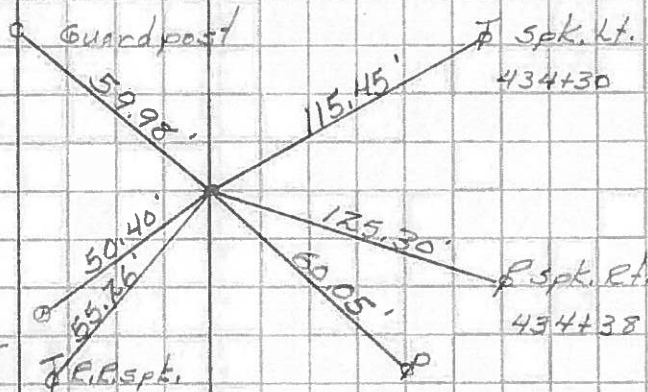
Iron pin on int.

with S.H. #33, SR #108

Sta. 433+09.8

(26)
#128

U.S.G.S. marker

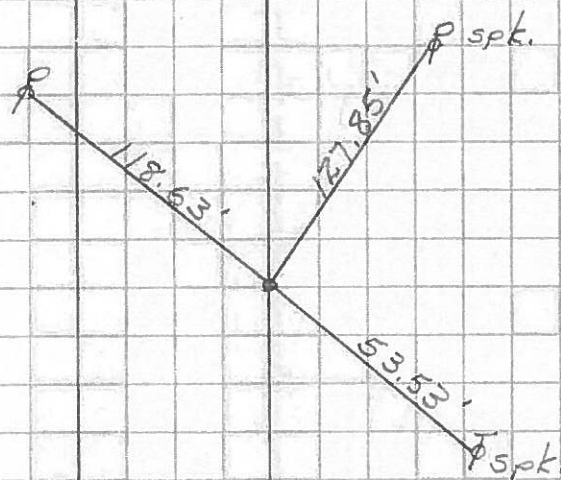


Sta. 433+09.8

Stone is 1.04' South

of ϕ of survey

Stone in ϕ #108 #20-S.



No Point at sur.

