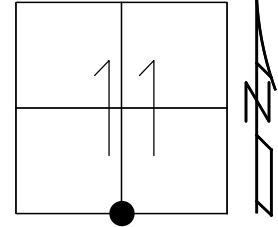


O.D.O.T. DISTRICT 2 SURVEY OFFICE (USE ONLY)

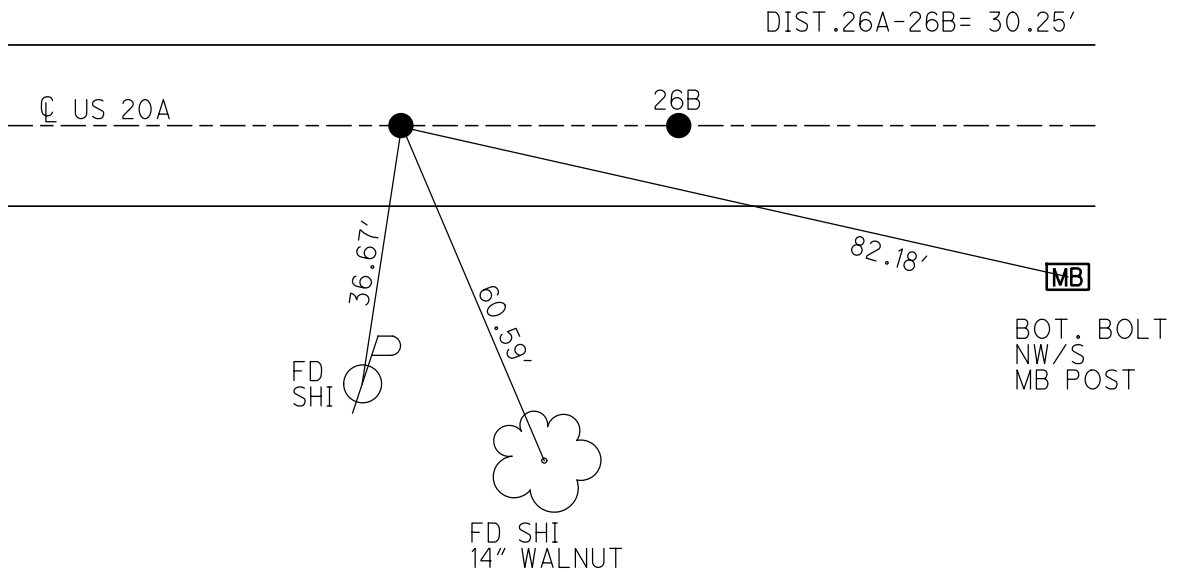
PERSONNEL _____ REFERENCE NO. 26 A SHEET 52 OF 62
 NOTES MILLER DATE 7/16/19 ROUTE US 20A
 H.C. O'DONNELL WEATHER CLOUDY COUNTY FULTON
 R.C. AUBLE TEMP. 78° TOWNSHIP CLINTON
RHOADES SECTION 11
 DWG BY NASON PID 101232 T 7 N R 6 E

TYPE MONUMENT P.K.SHANK
 ON SURFACE - ~~BELOW~~ ON
 OFFSET \varnothing PAVEMENT ON LT : RT
- TO - EDGE PAVEMENT
 STATION: 662+99.35



HORZ.DATUM: NAD83(2011) GEOID: 2012A
 GRID: NORTHING: 698878.807 EASTING: 1518624.102

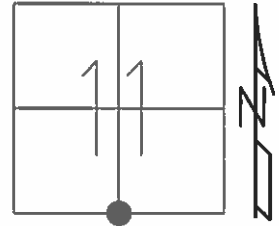
RECORD:
 FD P.K.NAIL
 6/6/02, DCH
 SET MAG/WASHER
 7-18-03, DCH
 FD P.K.SHANK
 REFA26
 7/24/14, EBW
 7/16/19, JFO
 SET MAG/WASHER
 10/22/19, JFO



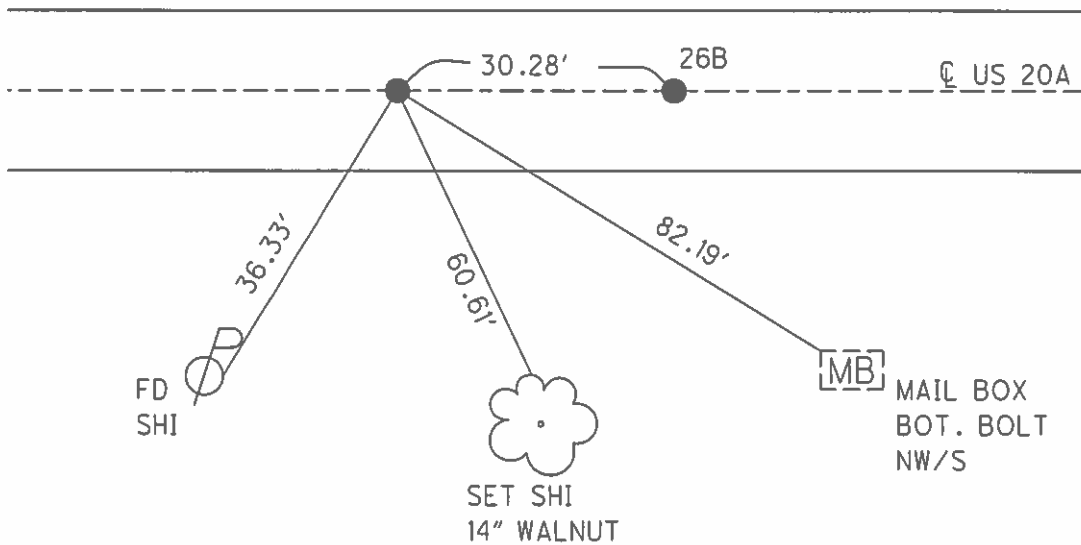
O.D.O.T. DISTRICT 2 SURVEY OFFICE (USE ONLY)

PERSONNEL _____ REFERENCE NO. 26 A SHEET 51 OF 61
 NOTES MICHALAK DATE 6/6/02 ROUTE US 20A
 H.C. HOMAN WEATHER CLOUDY COUNTY FULTON
 R.C. MALINSKY TEMP. 56° TOWNSHIP CLINTON
 _____ SECTION 11
 _____ T 7 N R 6 E

TYPE MONUMENT P.K.NAIL
 ON SURFACE - ~~BELOW~~ ON _____
 LEFT - ☉ PAV'T - RIGHT ON _____
 - TO - EDGE PAVEMENT
 S.L.M. 663+00
 GRID: NORTHING: _____ EASTING: _____



SET MAG/WASHER
 7-18-03, DCH



O.D.O.T. DISTRICT 2 SURVEY OFFICE

PERSONNEL

REFERENCE NO. 26A

SHEET 29 OF 30

NOTES MICHALAK

DATE 6-6-02

ROUTE U.S. 20-A

H.C. HOMAN

WEATHER CLOUDY

COUNTY FULTON

R.C. MALINSKY

TEMP. 56°

TOWNSHIP CLINTON

SECTION 11

T 7 N R 6 E

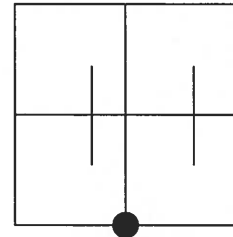
TYPE MONUMENT A=PK NAIL B=SM RR SP

ON SURFACE - ~~BELOW~~ YES

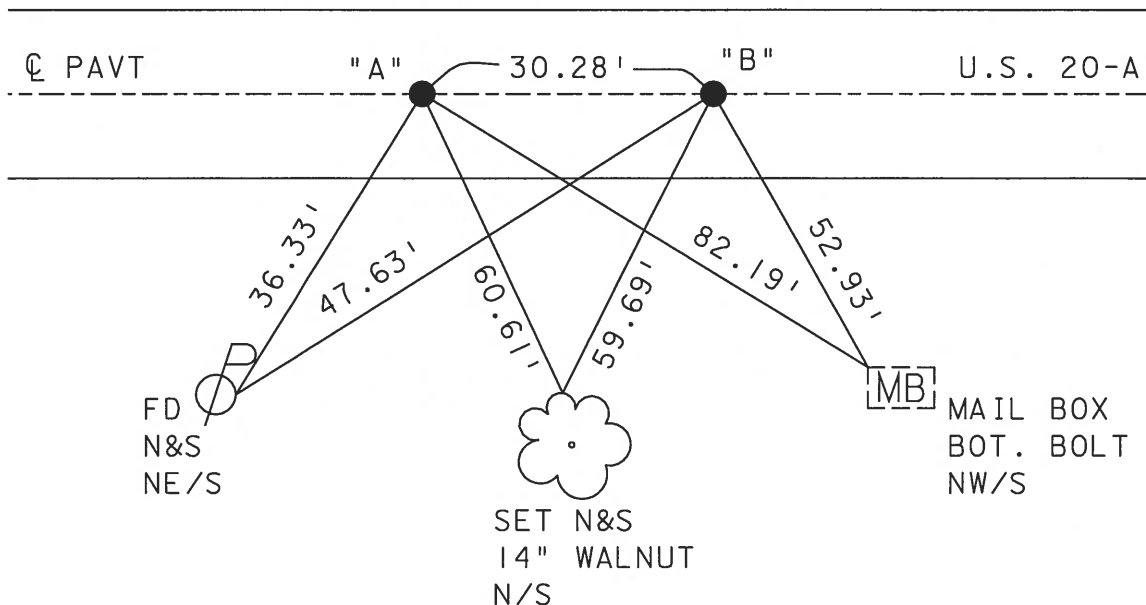
~~LEFT - C PAVT - RIGHT~~ YES

TO EDGE PAVEMENT

S.L.M. A=663+00 B=663+30



SET MAG NAIL
& WASHERS
7-18-03
DCH



O.D.O.T. DISTRICT 2 SURVEY OFFICE

PERSONNEL

REFERENCE NO. 26-1A

SHEET 3 OF 24

NOTES 1. Stone

H.C. J. Curtis

DATE 16 Sept. 86

ROUTE US #20-A

R.C. J. Haushalter

WEATHER Cool

COUNTY Fulton

TEMP. 50°

TOWNSHIP Clinton

SECTION 11

T. R.

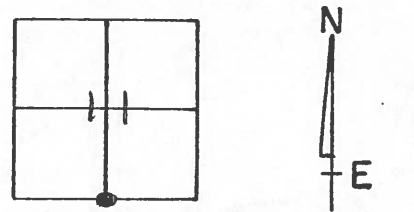
TYPE MONUMENT (A) = PK Nail
(B) = Small RR Spk.

ON SURFACE - BELOW Surface

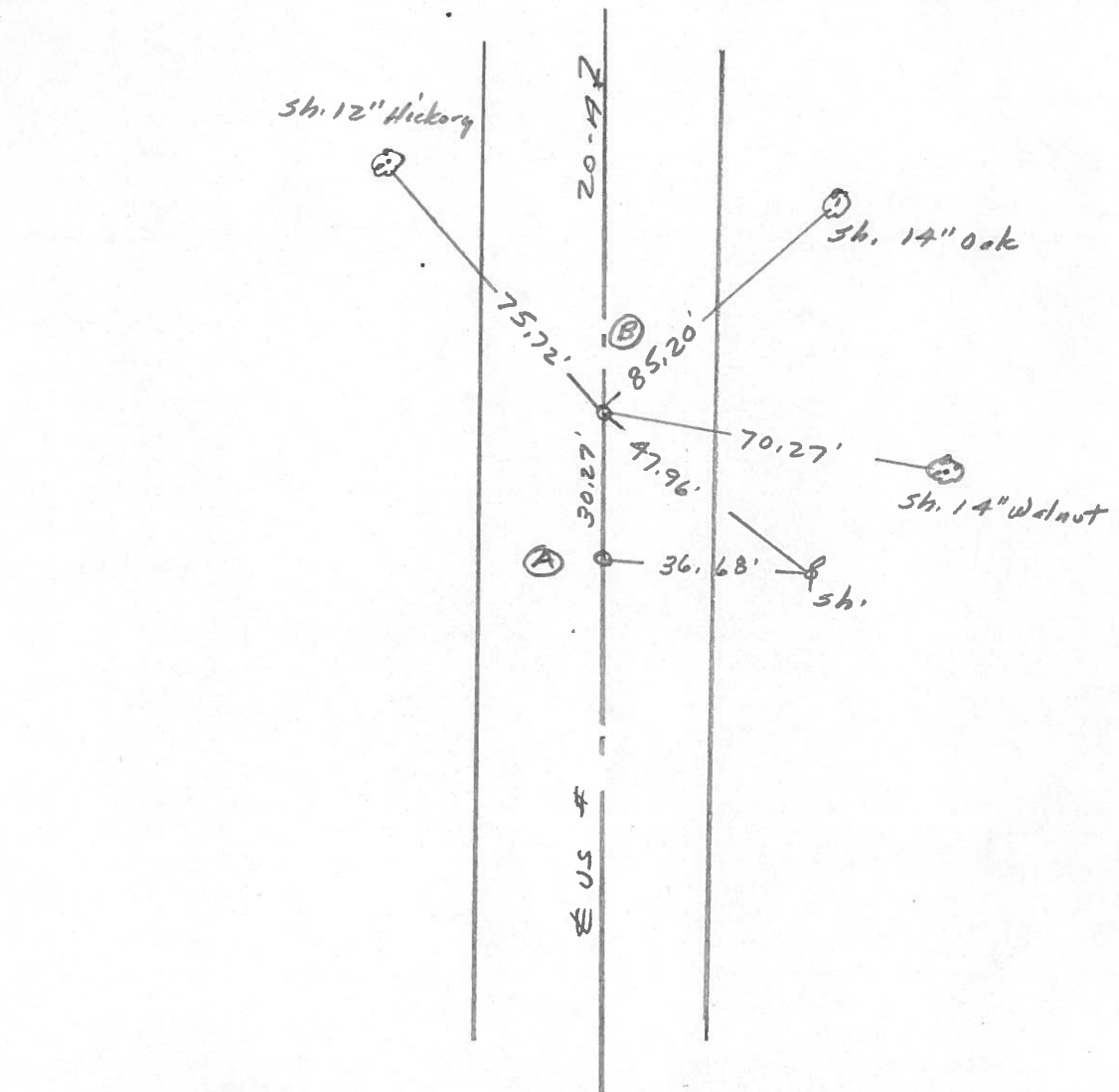
LEFT- & PAV'T. - RIGHT

TO EDGE PAVEMENT

S.L.M. (A) = 663+47 (B) = 663+77



BRASS MON. → (A) SET P. K. NAIL TO SURFACE
 (B) SET SMALL R.R. SPK. TO SURFACE
 4-29-88



Q.D.O.T. DISTRICT 2 SURVEY OFFICE

Sht. 29 of

County Fulton S.R. US 20A

Township Clinton

Section 11

T N, R E

Personnel L. Stone

R. Michalak

P. Hooser

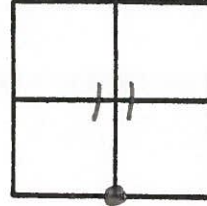
D. Curtis

D. Granatg

Date 29 June 79

Weather Cloudy

Temp. 74°



REF No. 26-A

SLM BLKTOP STA. 663+27



Shiner 10' 12"
Hickory

75.70

MON, 0

30.27

US 20A

PK Nail

85.23

Shiner in
14" Oak

70.30'

Shiner in
12" Walnut

48.02'

36.72'

Shiner

PK Nail :
8.5' to S. edge put.
15.2 to N. edge put.

Fd. MoBoKa To Surface
Old Sta. 663+37.23
5 1/4 Cor. Sec. 11
15.8 to N edge put.
8.0' to S. edge put.

PERSONNEL	TITLE	PERSONNEL	TITLE	COUNTY	DATE	WEATHER	TEMP.
Tomsic				Fulton	April 12, 1973		
Newsier				U.S. 20A			
Vanyo				CLINTON			
Granata							

DESCRIPTION _____ LEFT _____ CENTER LINE _____ RIGHT _____ JOB NO. _____

