

O.D.O.T. DISTRICT 2 SURVEY OFFICE (USE ONLY)

PERSONNEL

REFERENCE NO. 26 B

SHEET 53 OF 62

NOTES MILLER DATE 7/16/19
 H.C. O'DONNELL WEATHER CLOUDY
 R.C. AUBLE TEMP. 78°
RHOADES

ROUTE US 20A
 COUNTY FULTON
 TOWNSHIP CLINTON
 SECTION 11

DWG BY NASON PID 101232

T 7 N R 6 E

TYPE MONUMENT MAG/WASHER

ON SURFACE - ~~BELOW~~ ON

OFFSET ☑ PAVEMENT ON LT : RT

- TO - EDGE PAVEMENT

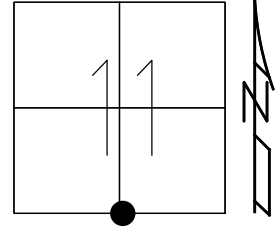
STATION: 663+29.61

HORIZ.DATUM: NAD83(2011)

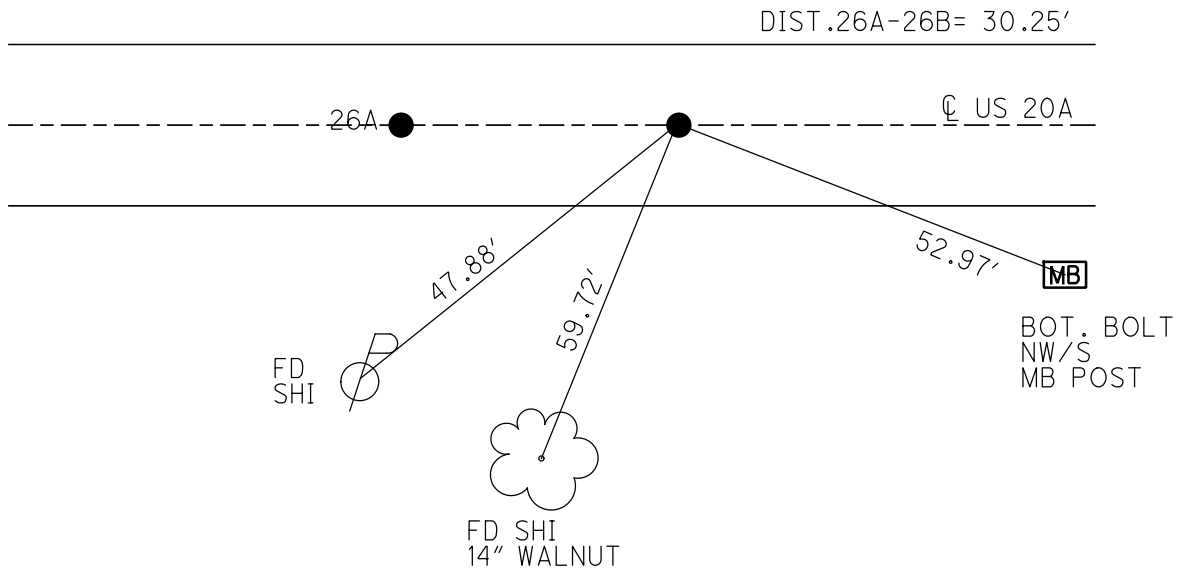
GEOID: 2012A

GRID: NORTHING: 698878.692

EASTING: 1518654.357



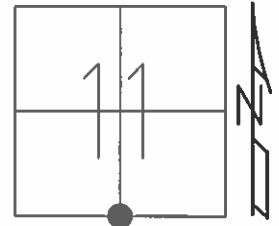
RECORD:
 FD SM.R.R.SPIKE
 6/6/02, DCH
 SET MAG/WASHER
 7-18-03, DCH
 FD MAG/WASHER
 REFB26
 7/24/14, EBW
 7/16/19, JFO
 SET MAG/WASHER
 10/22/19, JFO



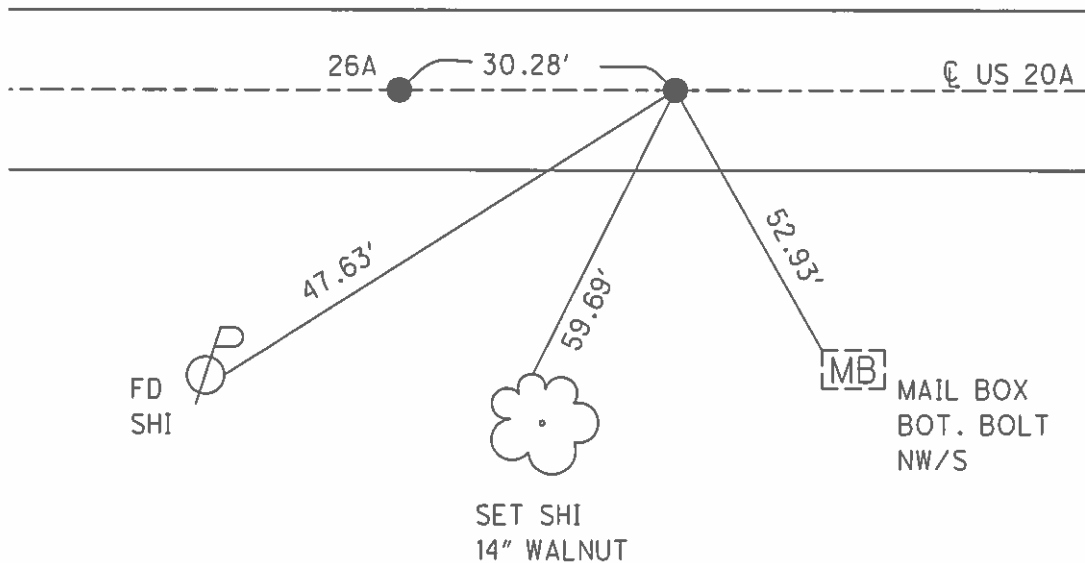
O.D.O.T. DISTRICT 2 SURVEY OFFICE (USE ONLY)

PERSONNEL	REFERENCE NO.	26 B	SHEET	52	OF	61
NOTES	MICHALAK	DATE	6/6/02	ROUTE	US 20A	
H.C.	HOMAN	WEATHER	CLOUDY	COUNTY	FULTON	
R.C.	MALINSKY	TEMP.	56°	TOWNSHIP	CLINTON	
				SECTION	1	
				T	7	N
				R	6	E

TYPE MONUMENT SM.R.R.SPIKE
 ON SURFACE - ~~BELOW~~ ON _____
 LEFT - ☉ PAV'T - RIGHT ON _____
 - TO - EDGE PAVEMENT
 S.L.M. 663+30
 GRID: NORTHING: _____ EASTING: _____



SET MAG/WASHER
 7-18-03, DCH



O.D.O.T. DISTRICT 2 SURVEY OFFICE

PERSONNEL

REFERENCE NO. 26A

SHEET 29 OF 30

NOTES MICHALAK

DATE 6-6-02

ROUTE U.S. 20-A

H.C. HOMAN

WEATHER CLOUDY

COUNTY FULTON

R.C. MALINSKY

TEMP. 56°

TOWNSHIP CLINTON

SECTION 11

T 7 N R 6 E

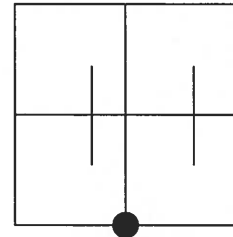
TYPE MONUMENT A=PK NAIL B=SM RR SP

ON SURFACE - ~~BELOW~~ YES

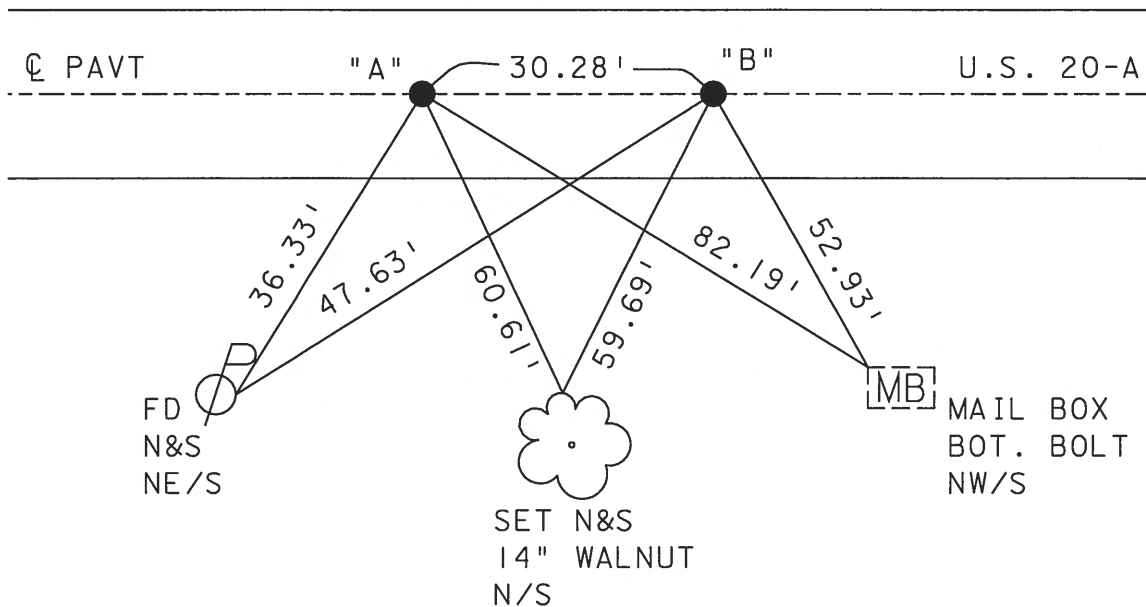
~~LEFT - C PAVT - RIGHT~~ YES

TO EDGE PAVEMENT

S.L.M. A=663+00 B=663+30



SET MAG NAIL
& WASHERS
7-18-03
DCH



O.D.O.T. DISTRICT 2 SURVEY OFFICE

PERSONNEL

REFERENCE NO. 26-1A

SHEET 3 OF 24

NOTES 1. Stone

H.C. J. Curtis

DATE 16 Sept. 86

ROUTE US #20-A

R.C. J. Hauscholder

WEATHER Cool

COUNTY Fulton

TEMP. 50°

TOWNSHIP Clinton

SECTION 11

T. R.

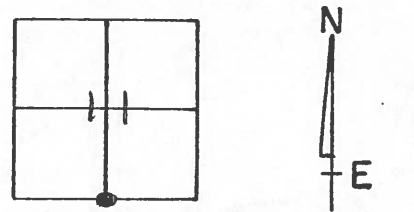
TYPE MONUMENT (A) = PK Nail
(B) = Small RR Spk.

ON SURFACE - BELOW Surface

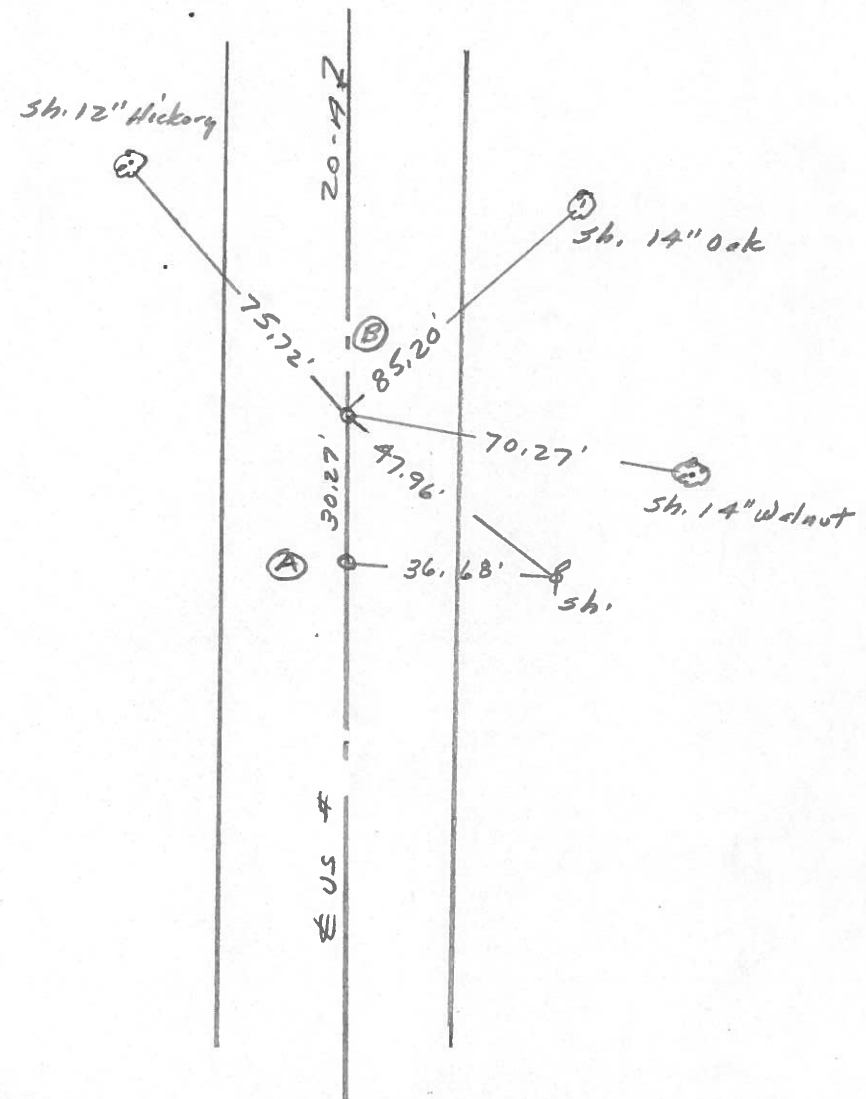
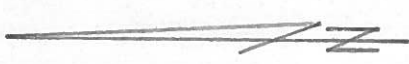
LEFT- & PAV'T. - RIGHT

TO EDGE PAVEMENT

S.L.M. (A) = 663+47 (B) = 663+77



BRASS MON. → (A) SET P. K. NAIL TO SURFACE
 (B) SET SMALL R.R. SPK. TO SURFACE
 4-29-88



County Fulton S.R. US 20A

Township Clinton

Section 11

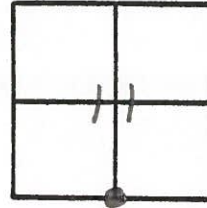
T N, R E

Personnel L. Stone
R. Michalak
P. Hooser
D. Curtis
D. Granatg

Date 29 June 79

Weather Cloudy

Temp. 74°



REF No. 26-A

SLM BLKTOP STA. 663+27



Shiner 10' 12"
Hickory

75.70

MON, 0

30.27

US 20A

PK Nail

85.23

Shiner in
14" Oak

70.30'

Shiner in
12" Walnut

48.02'

36.72'

Shiner

PK Nail =
 8.5' to S. edge put.
 15.2 to N. edge put.

Fd. MoBoKa To Surface
 Old Sta. 663+37.23
 5 1/4 Cor. Sec. 11
 15.8 to N edge put.
 8.0' to S. edge put.

PERSONNEL TITLE PERSONNEL TITLE

BURNSIDE _____ COUNTY FULTON

DATE 6-7-76

SMITH _____

S. R. U.S. 20-A

WEATHER CLEAR

MEAD _____

SEC. 1234 CLINTON

TEMP. 78.3°

DESCRIPTION \$ SURVEY & \$ R/W CONTROL POINTS

JOB NO. 021630

