

O.D.O.T. DISTRICT 2 SURVEY OFFICE (USE ONLY)

PERSONNEL

REFERENCE NO. 29 A

SHEET 57 OF 63

NOTES RHOADES

DATE 6/11/19

ROUTE US 20A

H.C. O'DONNELL

WEATHER SUNNY

COUNTY FULTON

R.C. MILLER

TEMP. 62°

TOWNSHIP CLINTON

DWG BY BALBAUGH PID 101232

SECTION 13

T 7 N R 6 E

TYPE MONUMENT MAG NAIL

ON SURFACE - ~~BELOW~~ ON

OFFSET \varnothing PAVEMENT ON ~~LT~~ : ~~RT~~
TO EDGE PAVEMENT

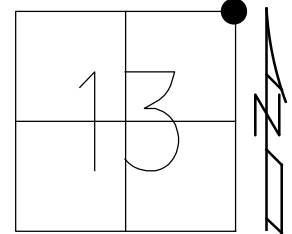
STATION: 743+31.58

HORIZ.DATUM: NAD83 (2011)

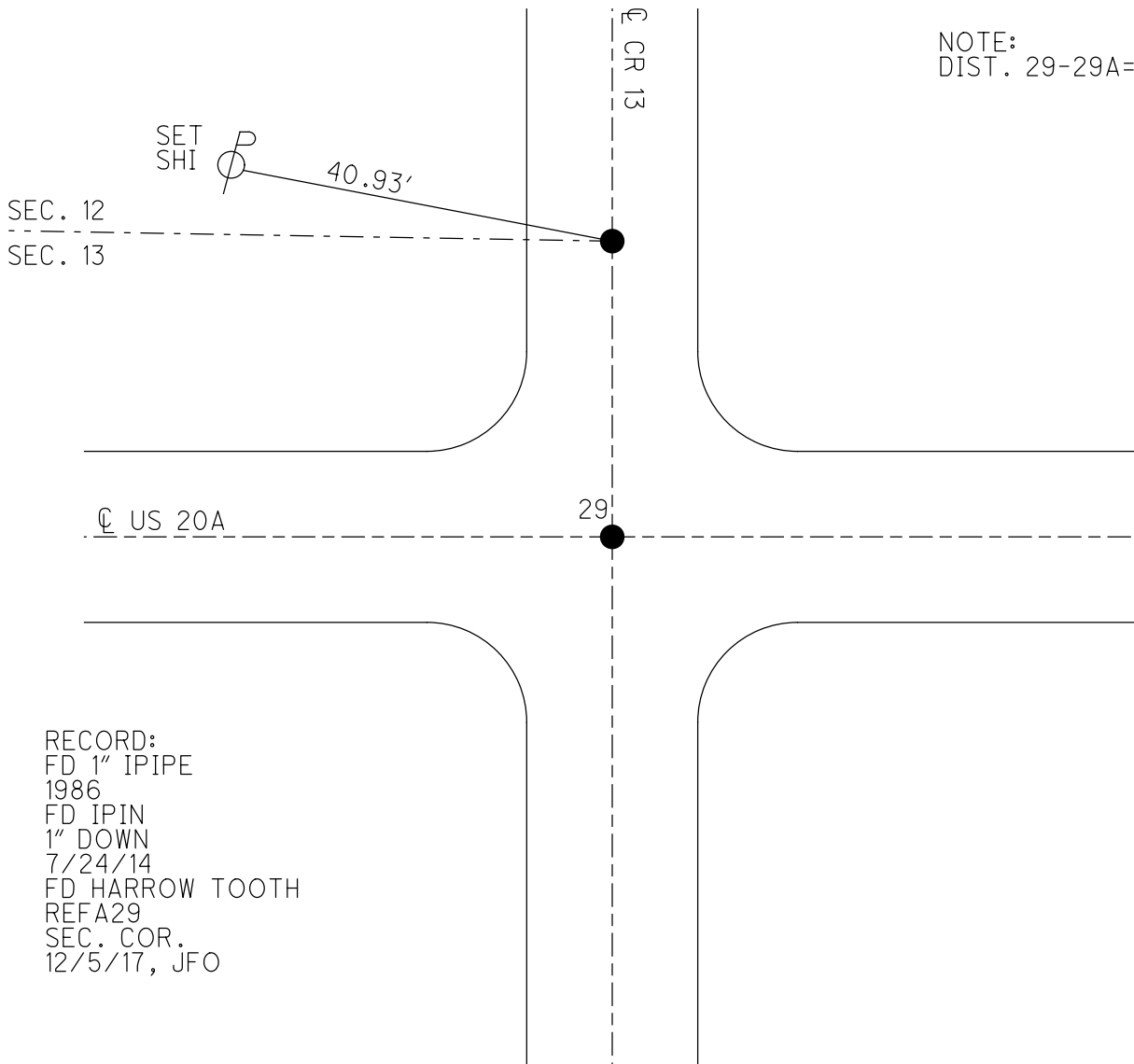
GEOID: 2012A

GRID: NORTHING: 698814.540

EASTING: 1526653.552



NOTE:
DIST. 29-29A= 37.13'



RECORD:
FD 1" IPIPE
1986
FD IPIN
1" DOWN
7/24/14
FD HARROW TOOTH
REFA29
SEC. COR.
12/5/17, JFO

O.D.O.T. DISTRICT 2 SURVEY OFFICE (USE ONLY)

PERSONNEL

REFERENCE NO. 29

SHEET 56 OF 63

NOTES RHOADES

DATE 6/11/19

ROUTE US 20A

H.C. O'DONNELL

WEATHER SUNNY

COUNTY FULTON

R.C. MILLER

TEMP. 62°

TOWNSHIP CLINTON

DWG BY BALBAUGH PID 101232

SECTION 13

T 7 N R 6 E

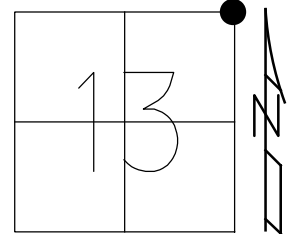
TYPE MONUMENT MAG NAIL

ON SURFACE - ~~BELOW~~ ON

OFFSET Q PAVEMENT 1.5' ~~RT~~ : RT

TO EDGE PAVEMENT

STATION: 743+31.58

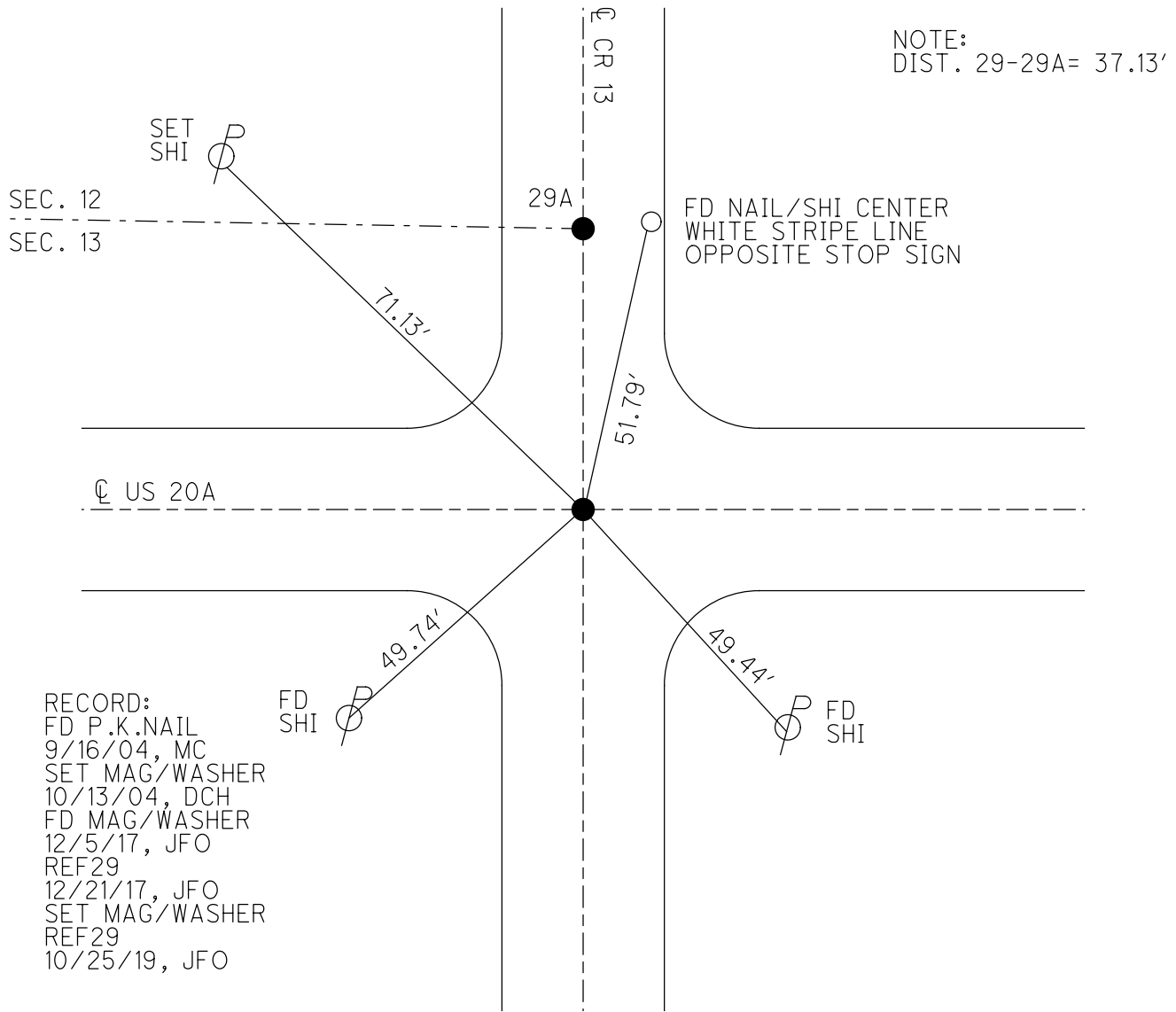


HORZ. DATUM: NAD83 (2011)

GEOID: 2012A

GRID: NORTHING: 698777.438

EASTING: 1526652.805

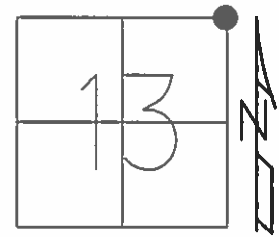


RECORD:
 FD P.K.NAIL
 9/16/04, MC
 SET MAG/WASHER
 10/13/04, DCH
 FD MAG/WASHER
 12/5/17, JFO
 REF29
 12/21/17, JFO
 SET MAG/WASHER
 REF29
 10/25/19, JFO

O.D.O.T. DISTRICT 2 SURVEY OFFICE (USE ONLY)

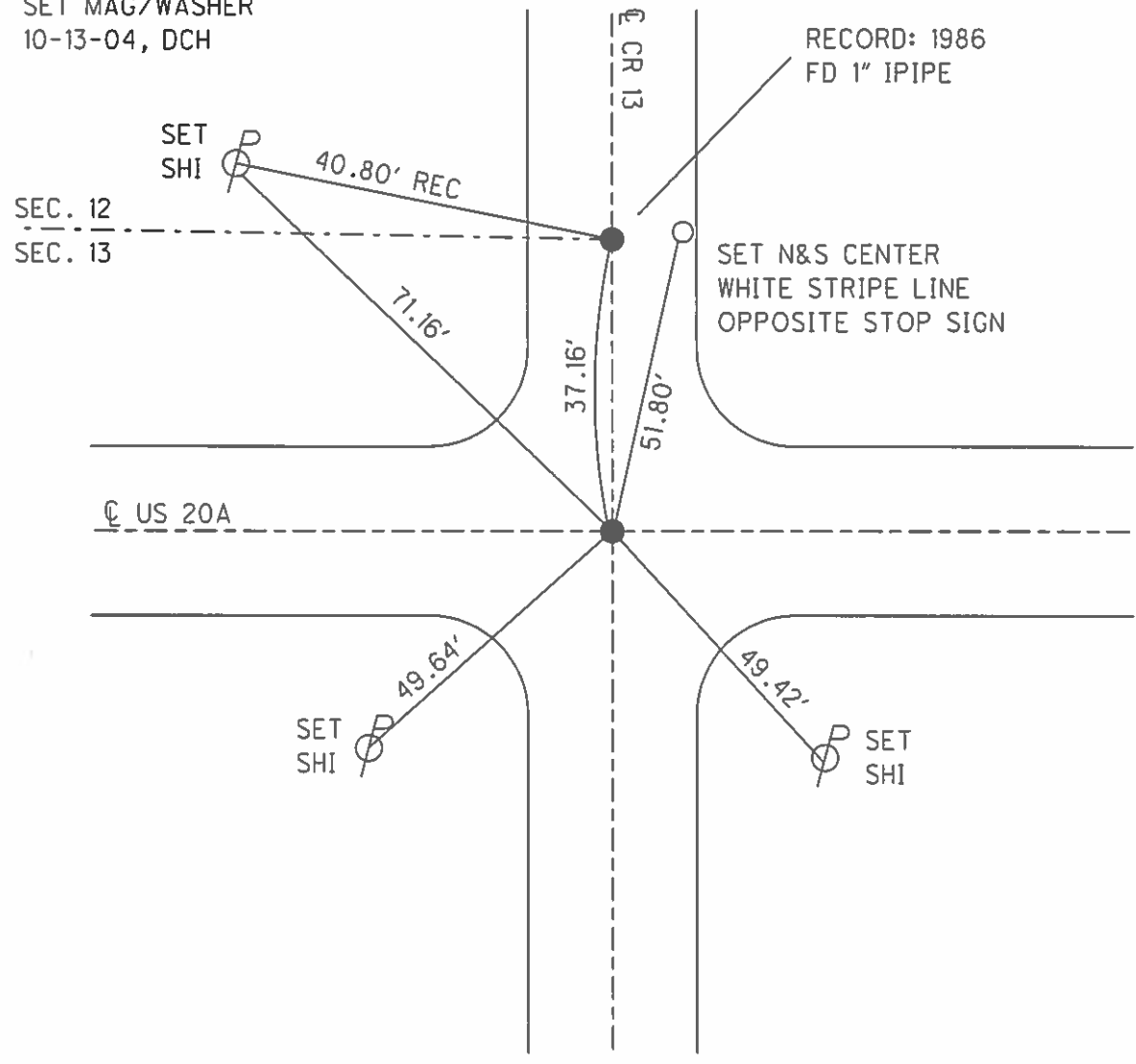
PERSONNEL _____ REFERENCE NO. 29 SHEET 55 OF 61
 NOTES HOMAN DATE 9/16/04 ROUTE US 20A
 H.C. CANTERBURY WEATHER CLOUDY COUNTY FULTON
 R.C. BARNHISEL TEMP. 70° TOWNSHIP CLINTON
 SECTION 13
T 7 N R 6 E

TYPE MONUMENT P.K.NAIL
 ON SURFACE - ~~BELOW~~ ON
~~LEFT~~ - Q PAV'T - RIGHT 1.5'
TO - EDGE PAVEMENT
 S.L.M. 743+35



GRID: NORTHING: _____ EASTING: _____

SET MAG/WASHER
 10-13-04, DCH



O.D.O.T. DISTRICT 2 SURVEY OFFICE

PERSONNEL

REFERENCE NO. 29

SHEET 2 OF 7

NOTES HOMAN

DATE 9-16-04

ROUTE U.S. 20-A

H.C. CANTERBURY

WEATHER CLOUDY

COUNTY FULTON

R.C. BARNHISEL

TEMP. 70°

TOWNSHIP CLIN/YORK

SECTION 12-7-13-18

T 7 N R 6 E

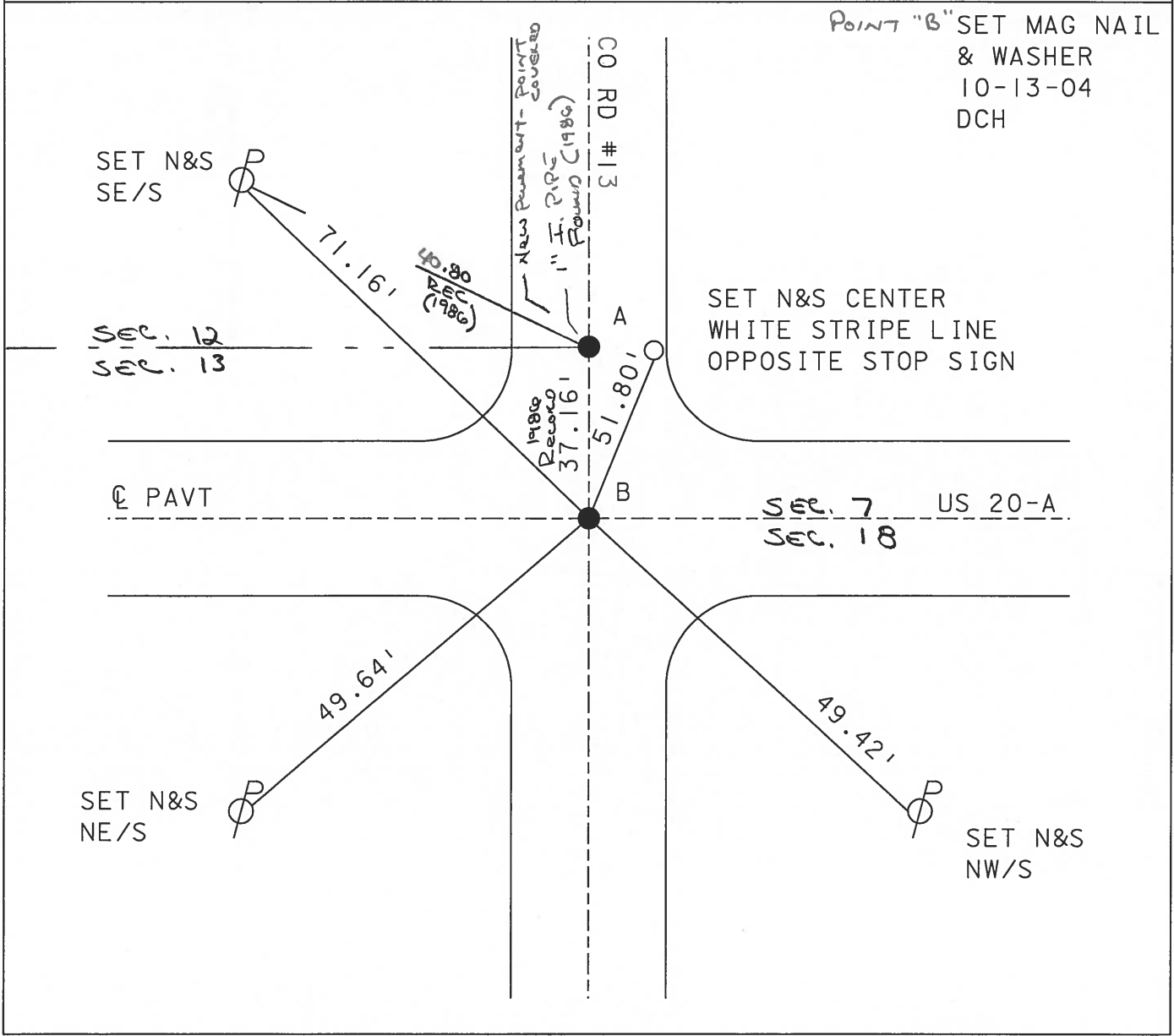
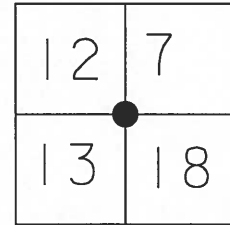
TYPE MONUMENT PK NAIL POINT "B"

ON SURFACE ~~BELOW~~ ON

~~LEFT - C PAVT - RIGHT~~ 1.5' RT

TO EDGE PAVEMENT

S.L.M. 743+35



POINT "B" SET MAG NAIL
& WASHER
10-13-04
DCH

SET N&S CENTER
WHITE STRIPE LINE
OPPOSITE STOP SIGN

SET N&S
SE/S

SEC. 12
SEC. 13

Q PAVT

SEC. 7
SEC. 18
US 20-A

SET N&S
NE/S

SET N&S
NW/S

O.D.O.T. DISTRICT 2 SURVEY OFFICE

PERSONNEL

REFERENCE NO. 29

SHEET 6 OF 24

NOTES 1. Stone

H.C. D. Curtis

DATE 16 Sept. 86

ROUTE US # 20-A

R.C. J. Householder

WEATHER Cool

COUNTY Fulton

TEMP. 50°

TOWNSHIP Clinton - York

SECTION 12-7-13-18

T R

TYPE MONUMENT PK Nail

ON SURFACE - BELOW Surface

LEFT- & PAV'T. - RIGHT

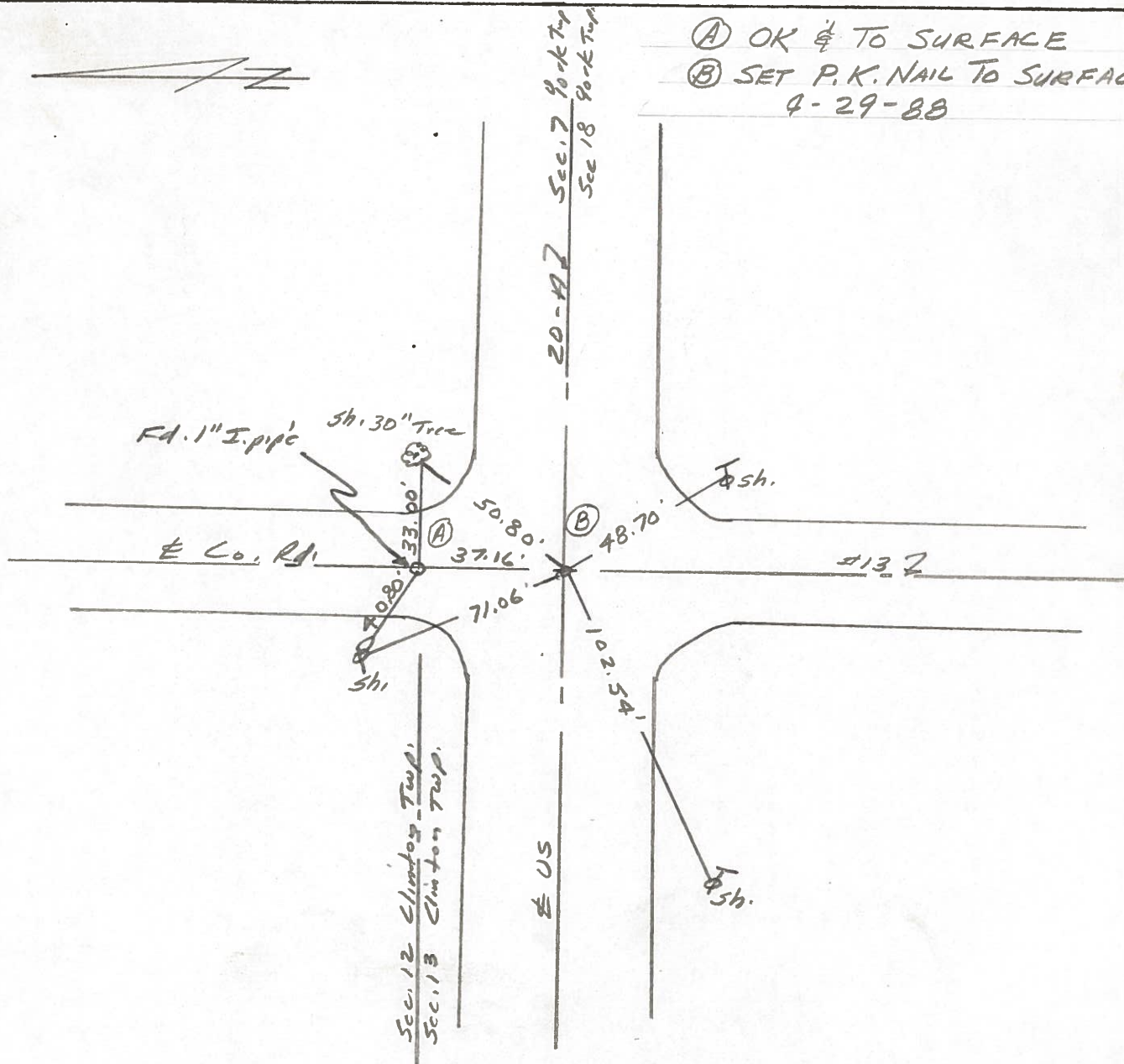
 TO EDGE PAVEMENT

S.L.M. 743+80

12	7
13	18



- Ⓐ OK & TO SURFACE
 - Ⓑ SET P.K. NAIL TO SURFACE
- 4-29-88



OD.O.T. DISTRICT 2 SURVEY OFFICE

SHEET 3 OF
SET P.K. & SHI 10-16-80
BOWERS

County Fulton S.R. US 20A & SR 2

Date 6-5-1980

Township Clinton & York

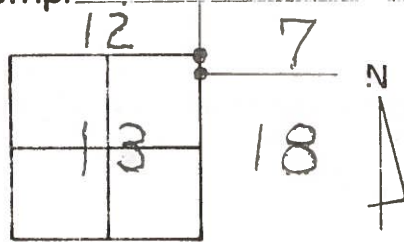
Weather Clear

Section NE Cor. Sec. 13, SE Cor Sec. 12 Clinton
NW Cor Sec. 18, SW Cor Sec. 7 York

Temp. + 80°

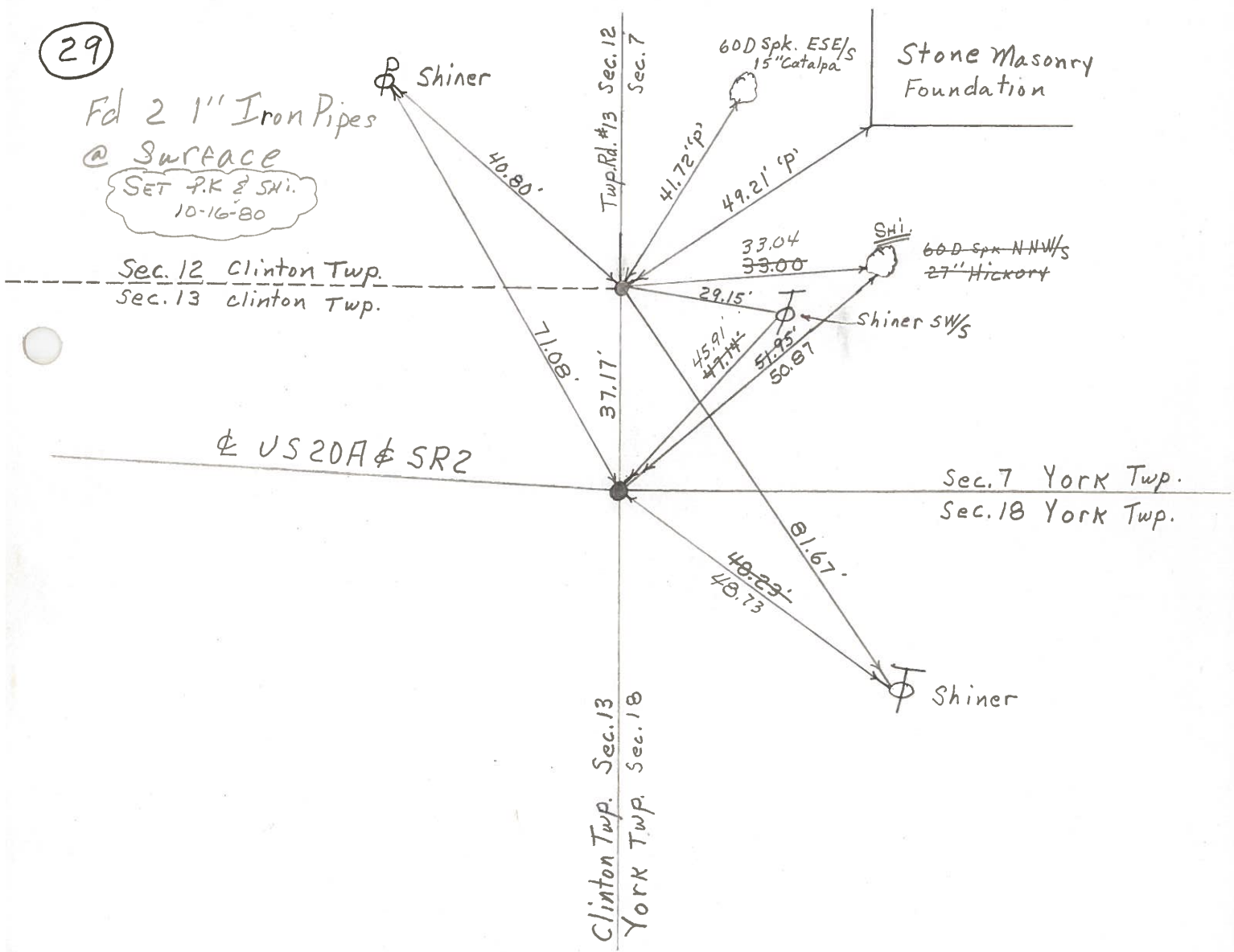
TZN, RTE

Personnel Smith
Bowers
Mead



(29)

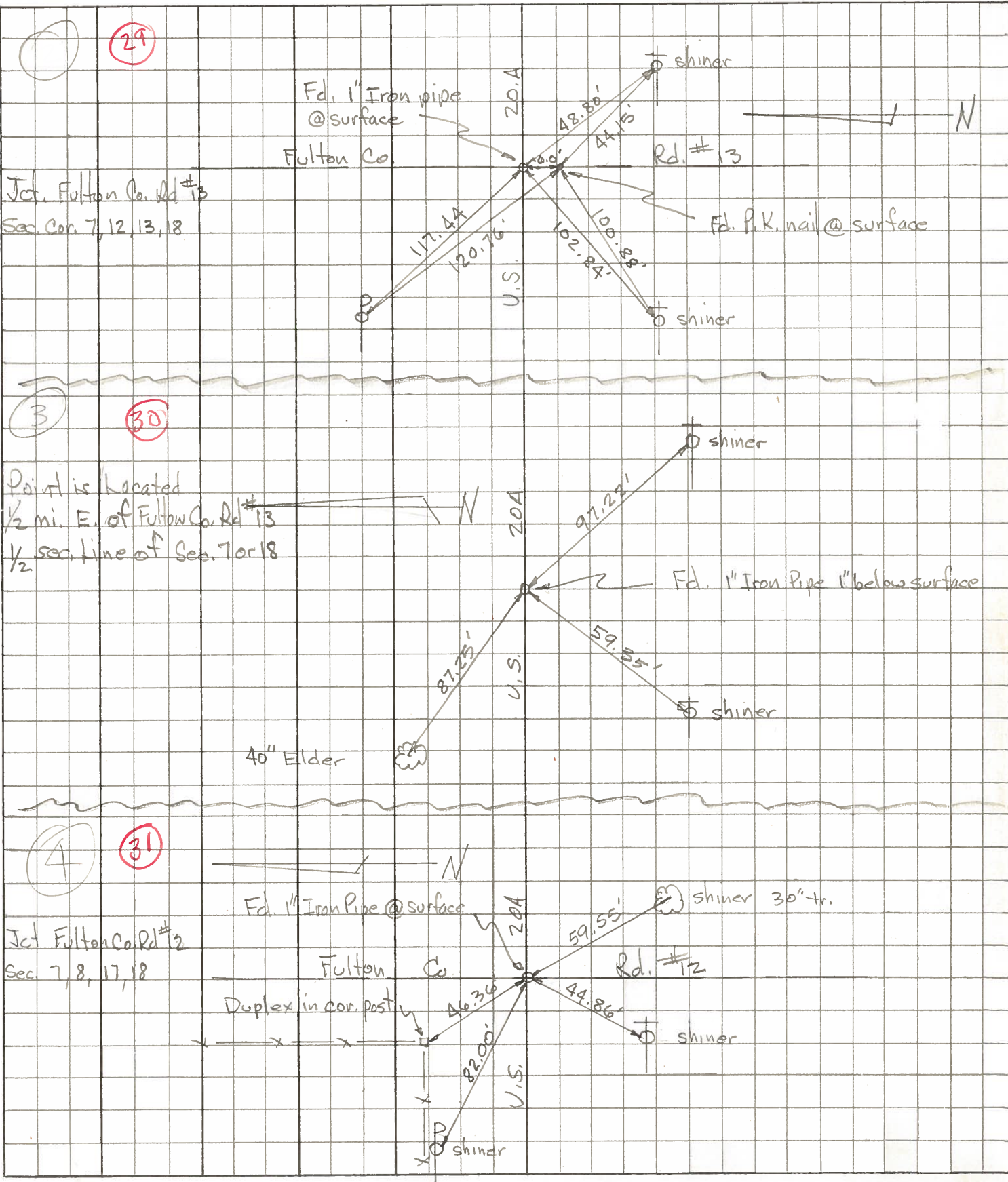
Fd 2 1" Iron Pipes
@ SURFACE
SET P.K. & SHI.
10-16-80



PERSONNEL	TITLE	PERSONNEL	TITLE
Tomsic			
Neuser			
Vanyo			
Granata			

COUNTY Fulton DATE April 12, 1973
 S. R. U.S. 70A WEATHER _____
 SEC. YORK TEMP. _____

DESCRIPTION _____ LEFT _____ CENTER LINE _____ RIGHT _____ JOB NO. _____



PERSONNEL TITLE PERSONNEL TITLE

Red Beach
Newcomb
Knappe
Eriksen

COUNTY FULTON DATE Jan. 1972

S. R. US 20-A WEATHER _____

SEC. Clinton-York T-7-N TEMP. _____

DESCRIPTION CONTROL POINTS JOB NO. _____

LEFT CENTER LINE RIGHT

CLINTON-YORK TWP. JUNCTION
(29) US 20-A @ Twp. Rd. #13

"Clinton Corner"

Found 11" x 1/4" Rod
from old witnesses
2" below surface.

Est. 18" x 1" pipe
21 Jan 1972

offset PK's 6'
N & W on surf.

Near side 3" pipe

stl. pipe
Gas Valve
Cage
46.41'

sec. 12
sec. 13

Clinton York
Twp. Rd. #137
sec. 12
sec. 7

60-d spk ESE/s
13" Catalpa

41.65'

49.07'

60-d spk NNW/s
27" Hickory

32.81'

29.15'

47.14'

51.95'

71.27'

37.17'

51.52'

82.36'

51.52'

51.52'

51.52'

51.52'

51.52'

Stone masonry
Foundtn.
Robt. Ward Gorsuch Res.

shiner SW/s

Dup. N/s

US 20-A

Near side
8" Gas Valve Box

"YORK CORNER"

Found lg. sq. head
pin from old
witnesses 16"
below pavt. surface

Est. 14" x 1" pipe
over existing pin.

21 Jan 1972

set offset PK's 6'
S. & E. of Cor. on
pavt surface.

sec. 7
sec. 13

No record of STONES at these
corners in recent years. Made
Cursory search. Extensive
cuts in the 1930's at this
junction have erased the
original corners.

