

O.D.O.T. DISTRICT 2 SURVEY OFFICE (USE ONLY)

PERSONNEL

REFERENCE NO. 30

SHEET 58 OF 63

NOTES RHOADES

DATE 6/11/19

ROUTE US 20A

H.C. O'DONNELL

WEATHER SUNNY

COUNTY FULTON

R.C. MILLER

TEMP. 62°

TOWNSHIP YORK

SECTION 18

DWG BY BALBAUGH

PID 101232

T 7 N R 7 E

TYPE MONUMENT MAG/WASHER

ON SURFACE - ~~BELOW~~ ON

OFFSET Q PAVEMENT ON ~~LT~~ : ~~RT~~

13.1' TO RT EDGE PAVEMENT

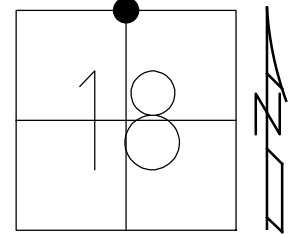
STATION: 769+47.43

HORZ.DATUM: NAD83 (2011)

GEOID: 2012A

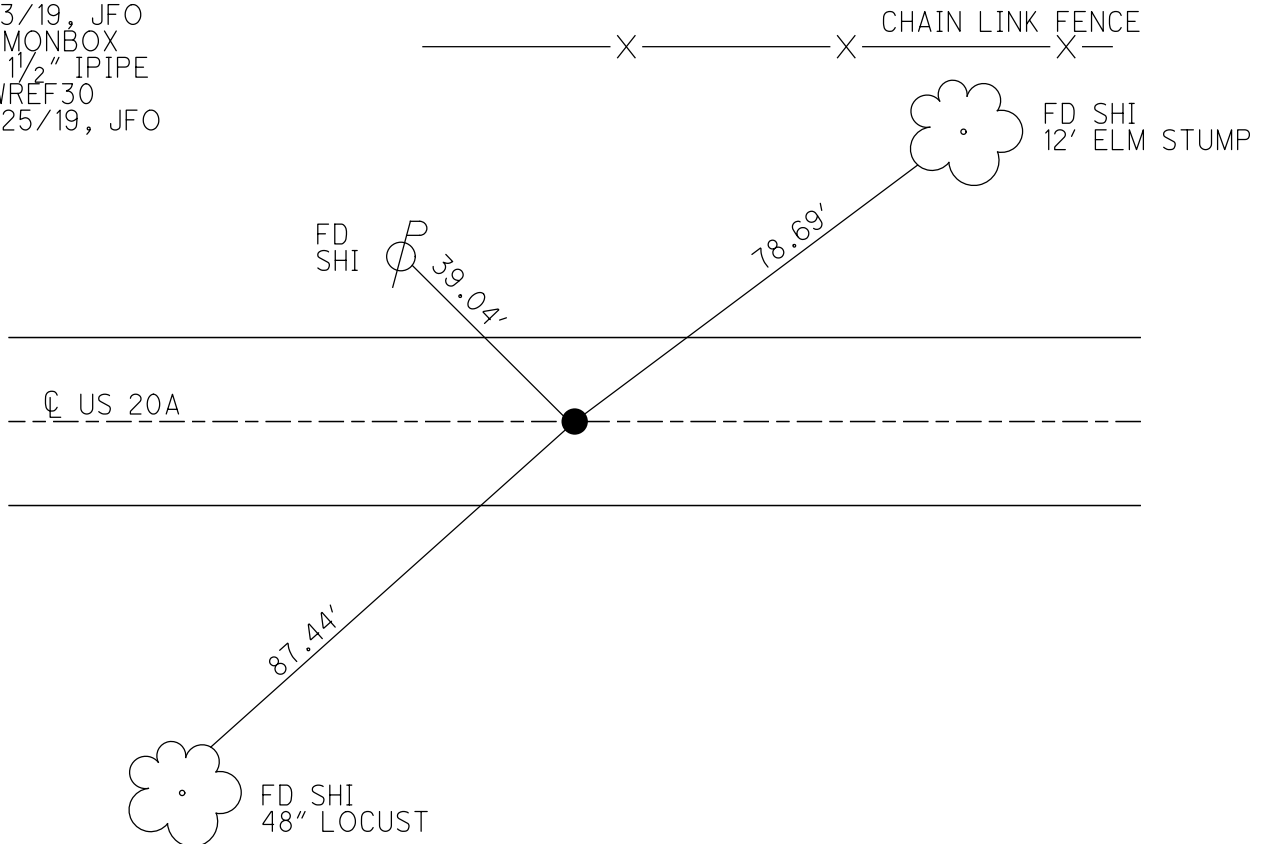
GRID: NORTHING: 698713.590

EASTING: 1529267.935



RECORD:

FD P.K.NAIL  
 9/16/04, MC  
 SET MAG/WASHER  
 10/13/04, DH  
 FD MAG/WASHER  
 12/5/17, JFO  
 REF30  
 12/21/17, JFO  
 REF30  
 6/13/19, JFO  
 FD MONBOX  
 W/ 1/2" IPIPE  
 NEWREF30  
 10/25/19, JFO

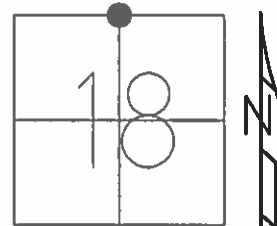


O.D.O.T. DISTRICT 2 SURVEY OFFICE (USE ONLY)

PERSONNEL \_\_\_\_\_ REFERENCE NO. 30 SHEET 56 OF 61

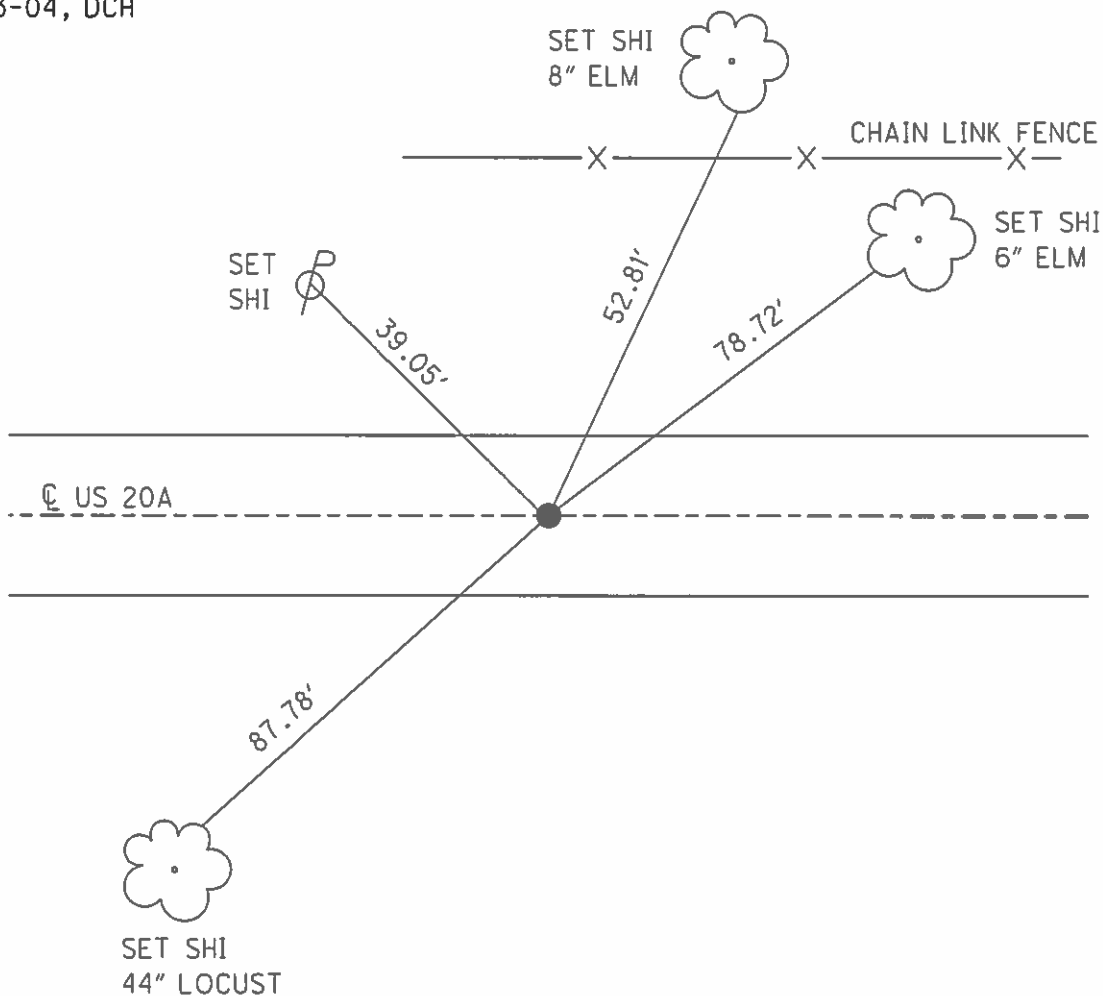
NOTES HOMAN DATE 9/16/04 ROUTE US 20A  
 H.C. CANTERBURY WEATHER CLOUDY COUNTY FULTON  
 R.C. BARNHISEL TEMP. 70° TOWNSHIP YORK  
 \_\_\_\_\_ SECTION 18  
 \_\_\_\_\_ T 7 N R 7 E

TYPE MONUMENT P.K.NAIL  
 ON SURFACE - ~~BELOW~~ ON  
 LEFT - ☉ PAV'T - RIGHT ON  
13.1' TORT EDGE PAVEMENT  
 S.L.M. 769+50



GRID: NORTHING: \_\_\_\_\_ EASTING: \_\_\_\_\_

SET MAG/WASHER  
 10-13-04, DCH



O.D.O.T. DISTRICT 2 SURVEY OFFICE

PERSONNEL

REFERENCE NO. 30

SHEET 3 OF 7

NOTES HOMAN

DATE 9-16-04

ROUTE U.S. 20-A

H.C. CANTERBURY

WEATHER CLOUDY

COUNTY FULTON

R.C. BARNHISEL

TEMP. 70°

TOWNSHIP YORK

SECTION 18

T 7 N R 7 E

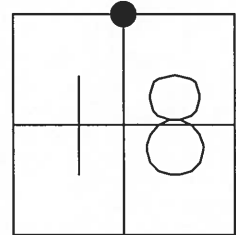
TYPE MONUMENT PK NAIL

ON SURFACE - ~~BELOW~~ YES

~~LEFT~~ - Q PAV'T - ~~RIGHT~~ YES

13.1 TO RT EDGE PAVEMENT

S.L.M. 769+50



SET MAG NAIL  
& WASHER  
10-13-04  
DCH

SET N&S  
SW/S  
8" ELM

SET N&S  
SE/S

CHAIN LINK FENCE

39.05'

52.81'

78.72'

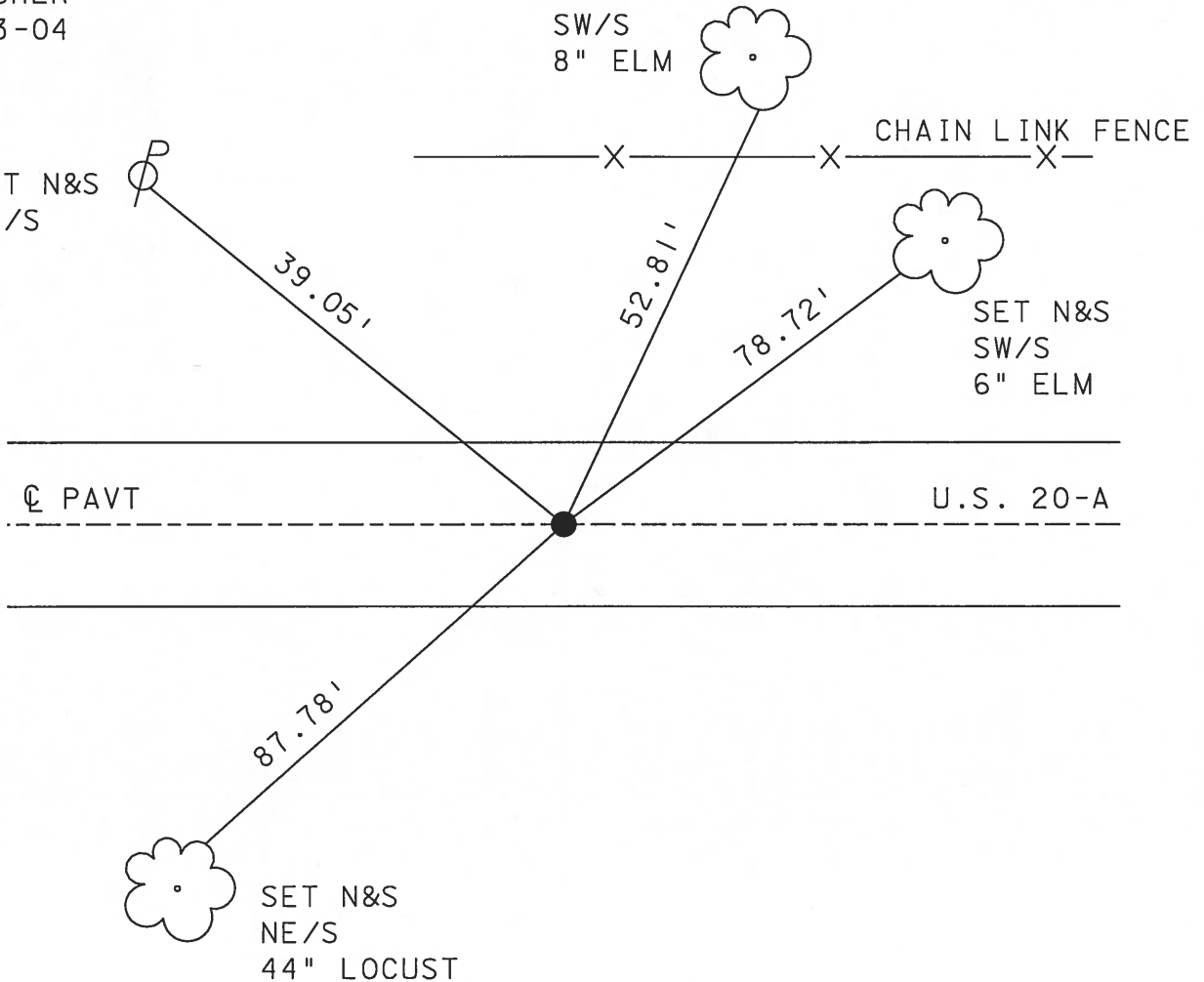
SET N&S  
SW/S  
6" ELM

Q PAVT

U.S. 20-A

87.78'

SET N&S  
NE/S  
44" LOCUST



# O.D.O.T. DISTRICT 2 SURVEY OFFICE

PERSONNEL \_\_\_\_\_

REFERENCE NO. 30

SHEET 7 OF 24

NOTES 1. Stone

H.C. D. Curtis

DATE 16 Sept. 86

ROUTE US #20-A

R.C. J. Hausholder

WEATHER Cool

COUNTY Fulton

TEMP. 55°

TOWNSHIP Pook

SECTION 18

T \_\_\_\_\_ R \_\_\_\_\_

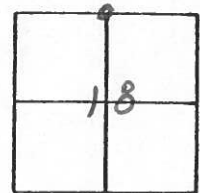
TYPE MONUMENT PK Nail

ON SURFACE - BELOW Surface

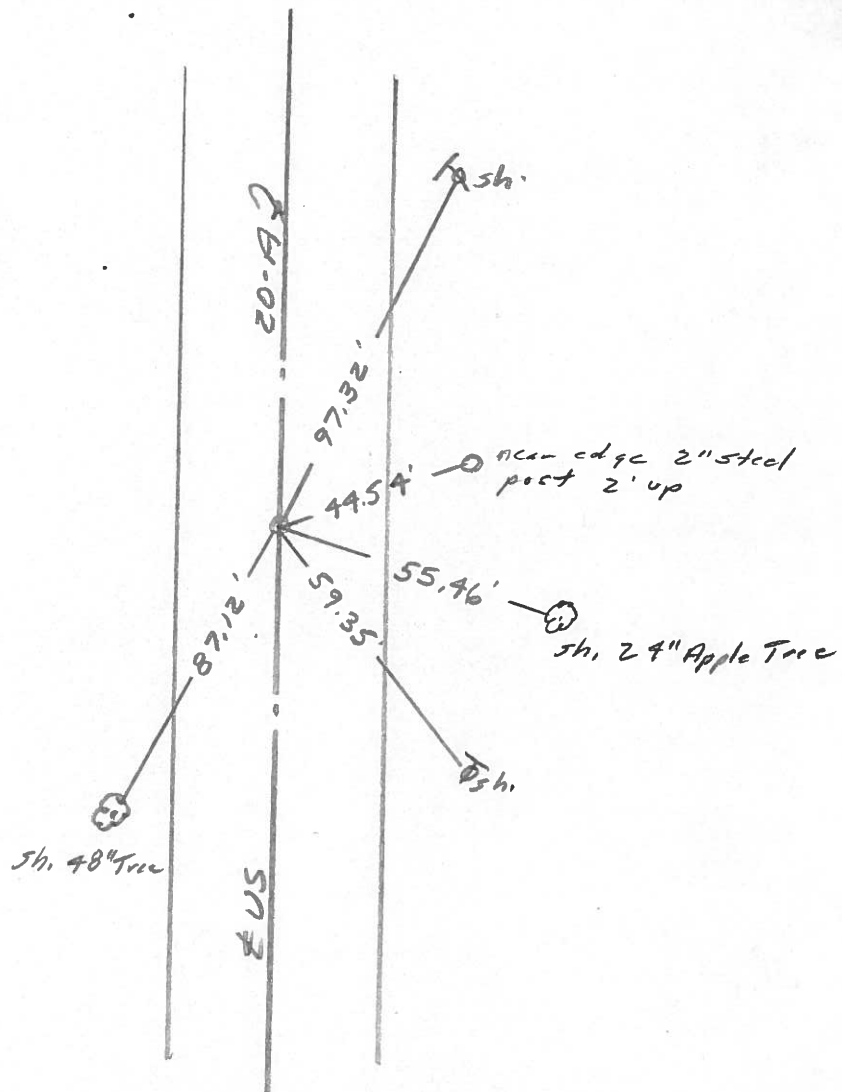
LEFT- & PAW'T. - RIGHT \_\_\_\_\_

TO \_\_\_\_\_ EDGE PAVEMENT

S.L.M. 769+97



SET P.K. NAIL TO SURFACE  
4-29-88



County Fulton S.R. 2 & US 20A

Date 6-5-1980

Township York

Weather Clear

Section 18 N $\frac{1}{4}$  Cor

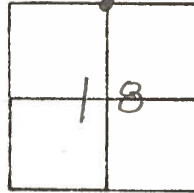
Temp. + 80°

TIN, RIE

Personnel Smith

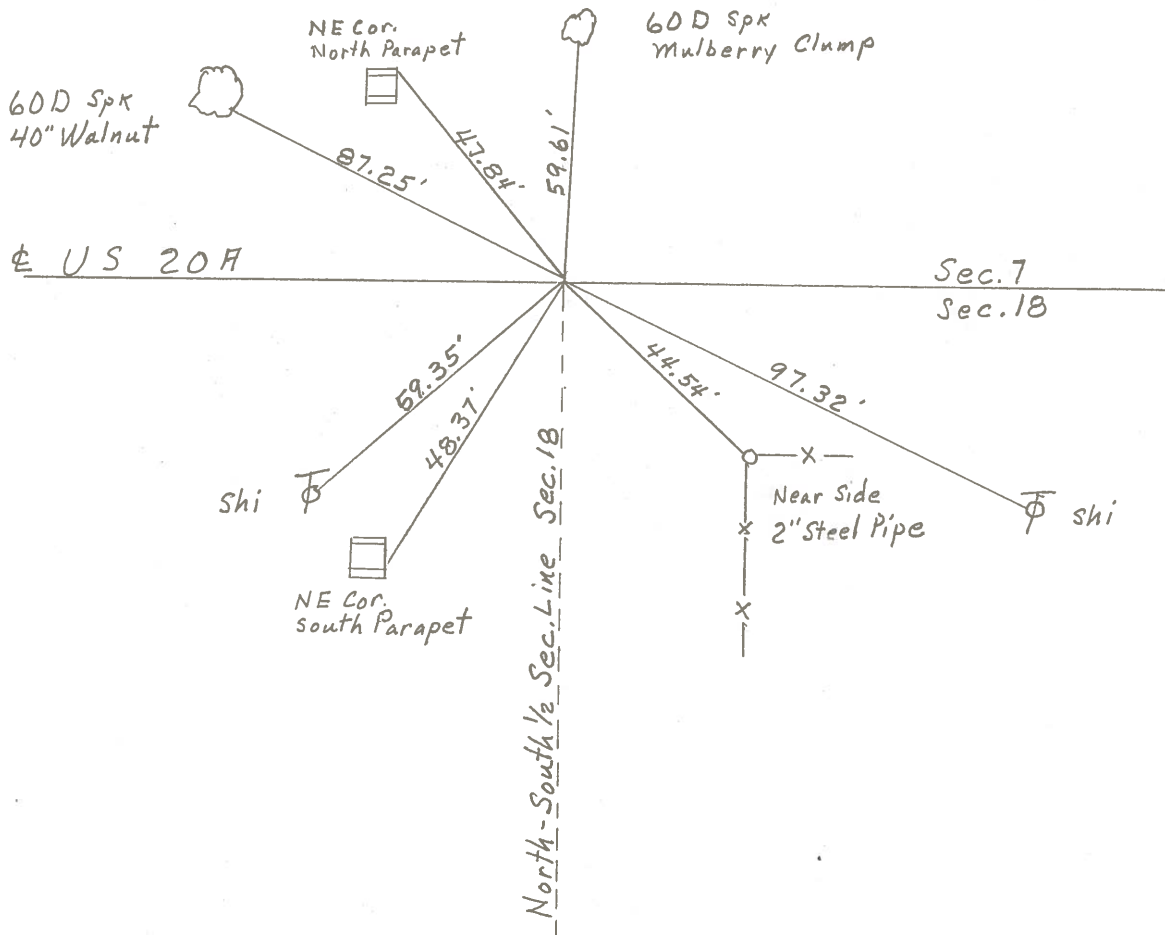
Bowers

Mead



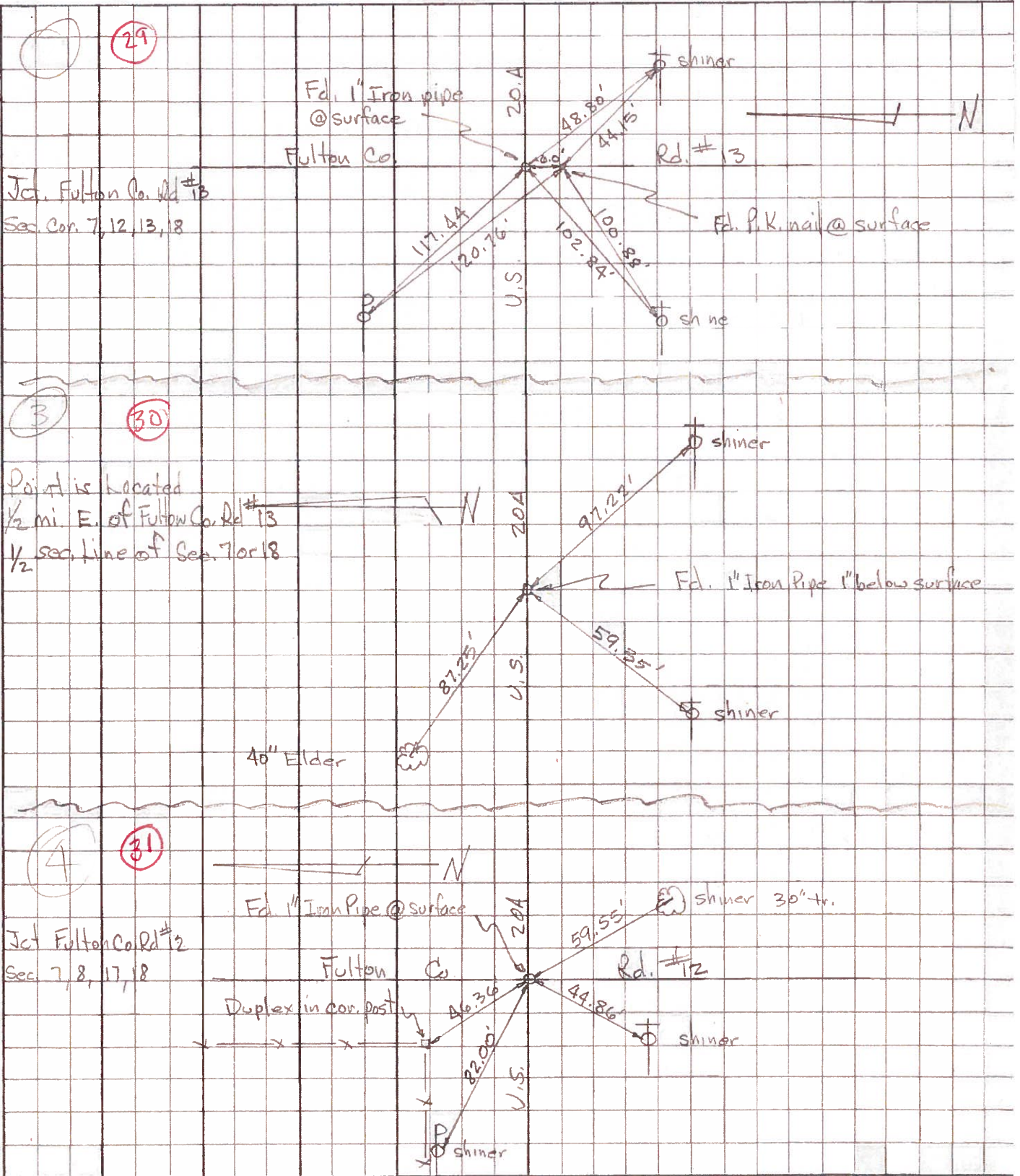
(30)

Fd 1" Iron Pipe @ Surface



PERSONNEL	TITLE	PERSONNEL	TITLE	COUNTY	DATE	WEATHER	TEMP.
Tomsic				Fulton	April 12, 1973		
Neuser				S. R. U.S. 20A			
Vanyo				SEC. YORK			
Granata							

DESCRIPTION LEFT CENTER LINE RIGHT JOB NO.





PERSONNEL TITLE PERSONNEL TITLE

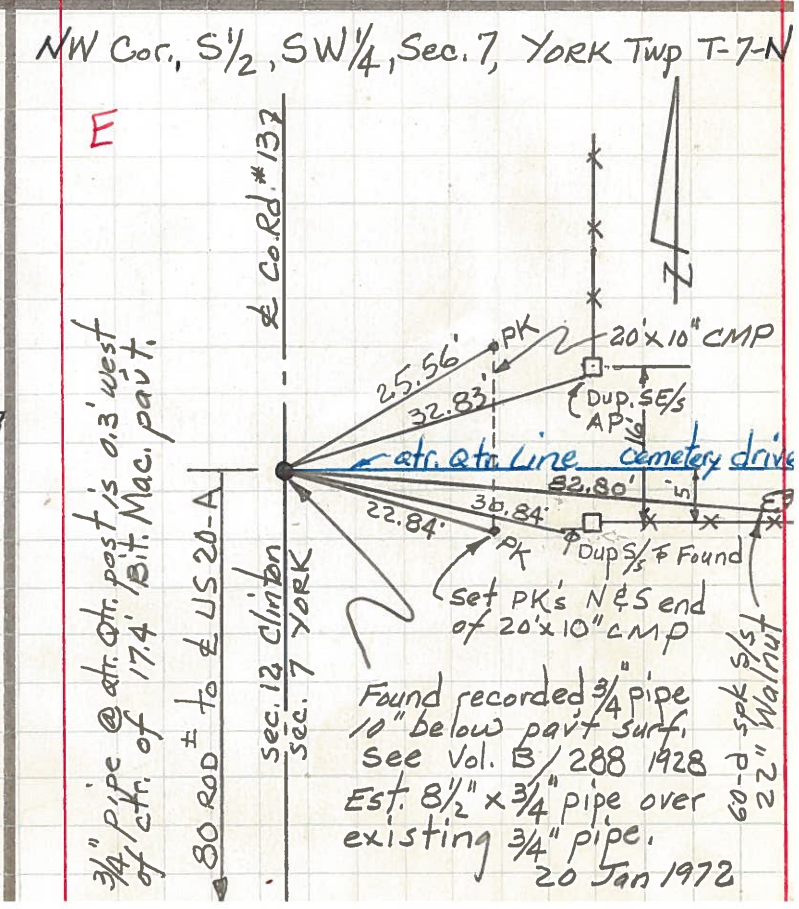
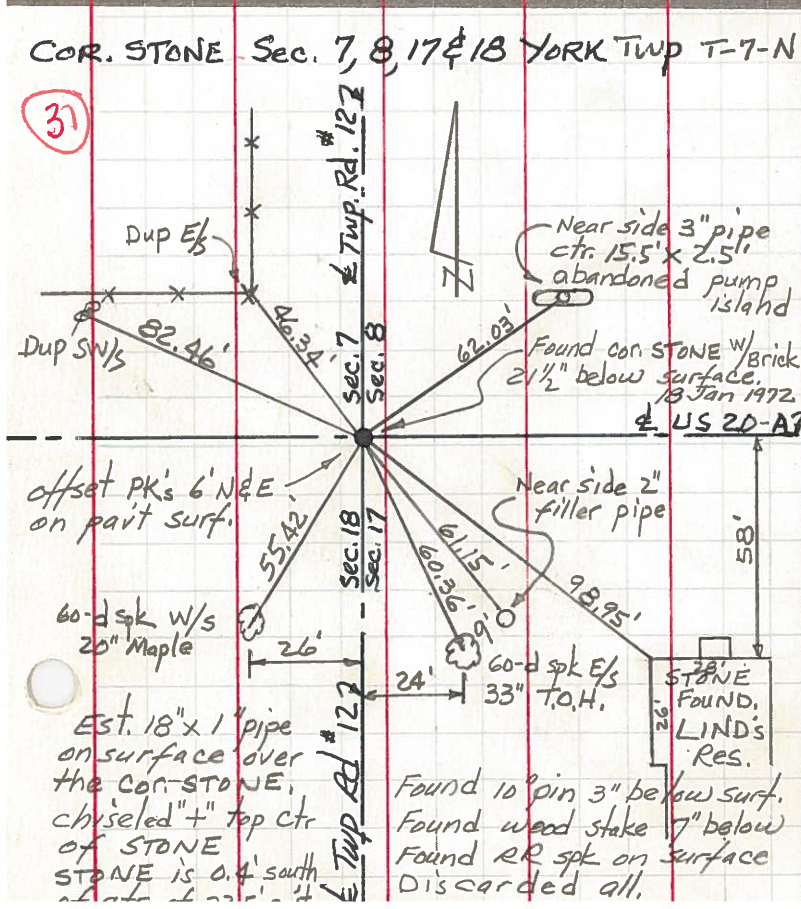
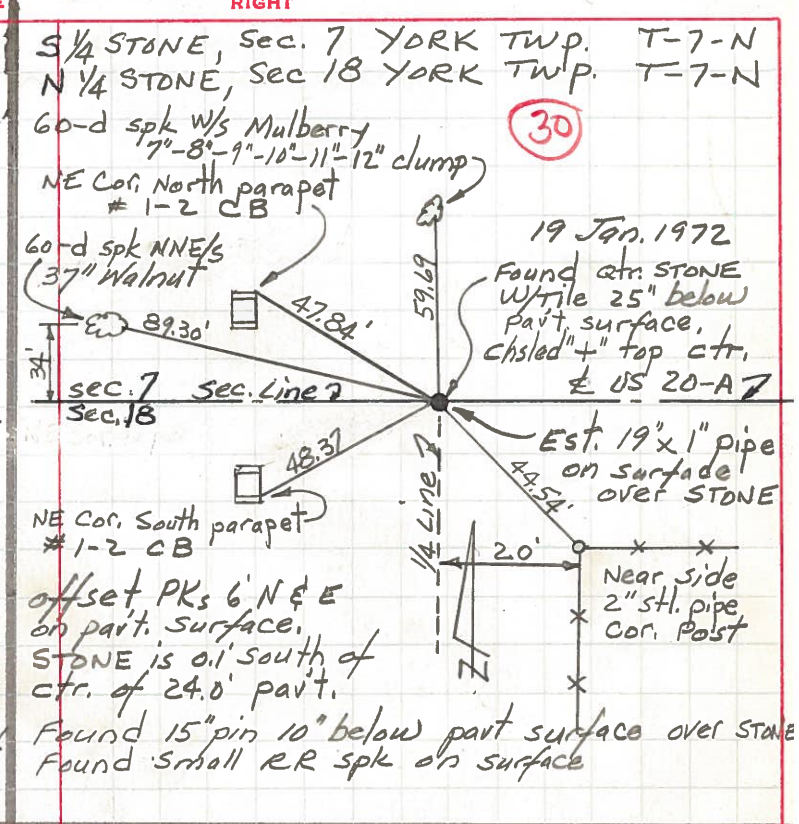
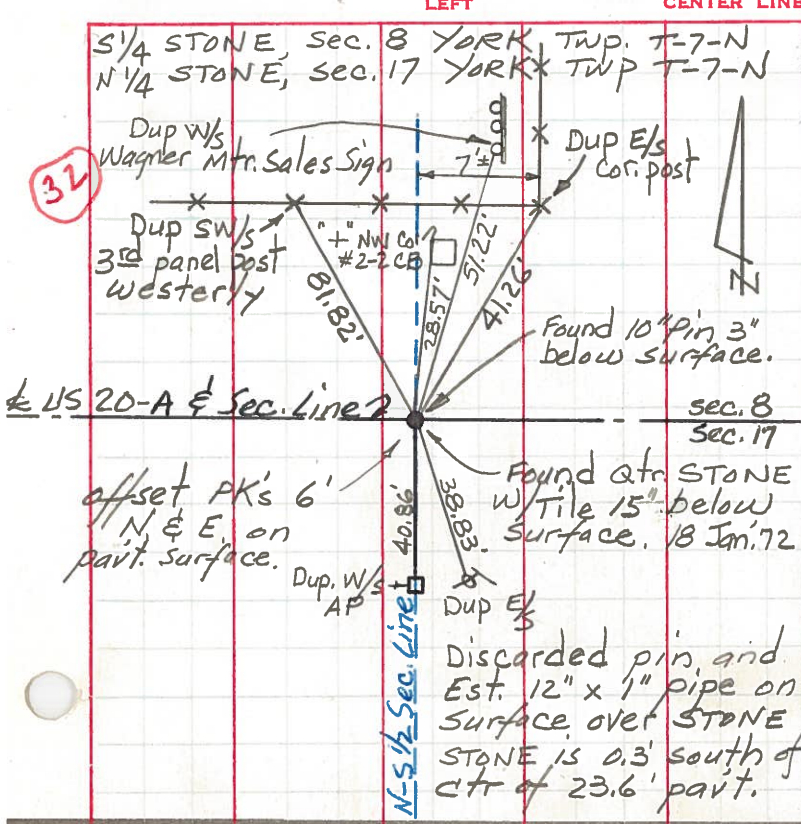
Red Beach  
Newcomb  
Knappe  
Eriksen

COUNTY Fulton DATE Jan 1972

S. R. US 20-A WEATHER \_\_\_\_\_

SEC. YORK TWP TEMP. \_\_\_\_\_

DESCRIPTION \_\_\_\_\_ CONTROL POINTS \_\_\_\_\_ JOB NO. \_\_\_\_\_





PERSONNEL TITLE PERSONNEL TITLE

COUNTY Fulton DATE 3-28-55

S. R. #2 & 20 Alt. WEATHER 9-12-60

SEC. M, A, O, TEMP.

DESCRIPTION LEFT CENTER LINE RIGHT JOB NO.

DESCRIPTION	LEFT	CENTER LINE	RIGHT	JOB NO.
P.I. Sta. 53+62.34 S.W. cor. sec. 7 Fd. iron pin 12" below surface of pav't. (Not plum bed)			SE. to shiner in T.P. 45.35' S.W. to shiner in A. Post 46.90' S.W. to shiner in T.P. 102.25' N.W. to shiner in 24" Elm 171.45' N.E. to shiner in 20" Hickory 51.05'	
	#72 ✓			
Sta. 79+78.58 S. 1/4 sec. 7 Fd. iron pin			N.W. to shiner in 30" walnut 87.25' S.W. to shiner in T.P. 59.60 S.E. to iron A.P. 1' above gnd. 44.30' N.E. to shi. in 24" Spruce N.E. 97.15'	
	#73 ✓			
Sta. 106+08.39 S.W. cor. sec. 8 Iron pin			N.E. to iron post in pump island 62.09' N.W. to shiner in P.P. 81.90' S.W. to shiner in 12" maple 54.83 S.E. to shiner in 30" catalpa 59.70'	
	#74 ✓			
Sta. 132+68.17 S. 1/4 sec. 8 Fd. iron pin			N.N.E. to steel sign post stake 40.47 N.N.E. to shiner in P.P. 40.94 40.88 N.W. to shiner in 3rd fence post 54.35 S. to shiner in T.P. 38.25	
	#75			
Sta. 159+27.37 S.W. cor. sec 9 Fd. iron pin			S.W. to shiner in T.P. 44.20' N.E. to shiner in P.P. 45.67 S.E. to near side of Gov. B.M. 56.97 N.W. to near side of iron A.P. 44.80'	
	#76			