

O.D.O.T. DISTRICT 2 SURVEY OFFICE (USE ONLY)

PERSONNEL

REFERENCE NO. 31

SHEET 59 OF 63

NOTES RHOADES DATE 6/11/19
 H.C. O'DONNELL WEATHER SUNNY
 R.C. MILLER TEMP. 62°

ROUTE US 20A
 COUNTY FULTON
 TOWNSHIP YORK
 SECTION 18
 T 7 N R 7 E

DWG BY BALBAUGH PID 101232

TYPE MONUMENT MAG/WASHER

ON SURFACE - ~~BELOW~~ ON

OFFSET \varnothing PAVEMENT ON ~~RT~~ : ~~RT~~

TO EDGE PAVEMENT

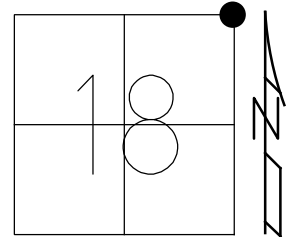
STATION: 795+77.04

HORZ.DATUM: NAD83 (2011)

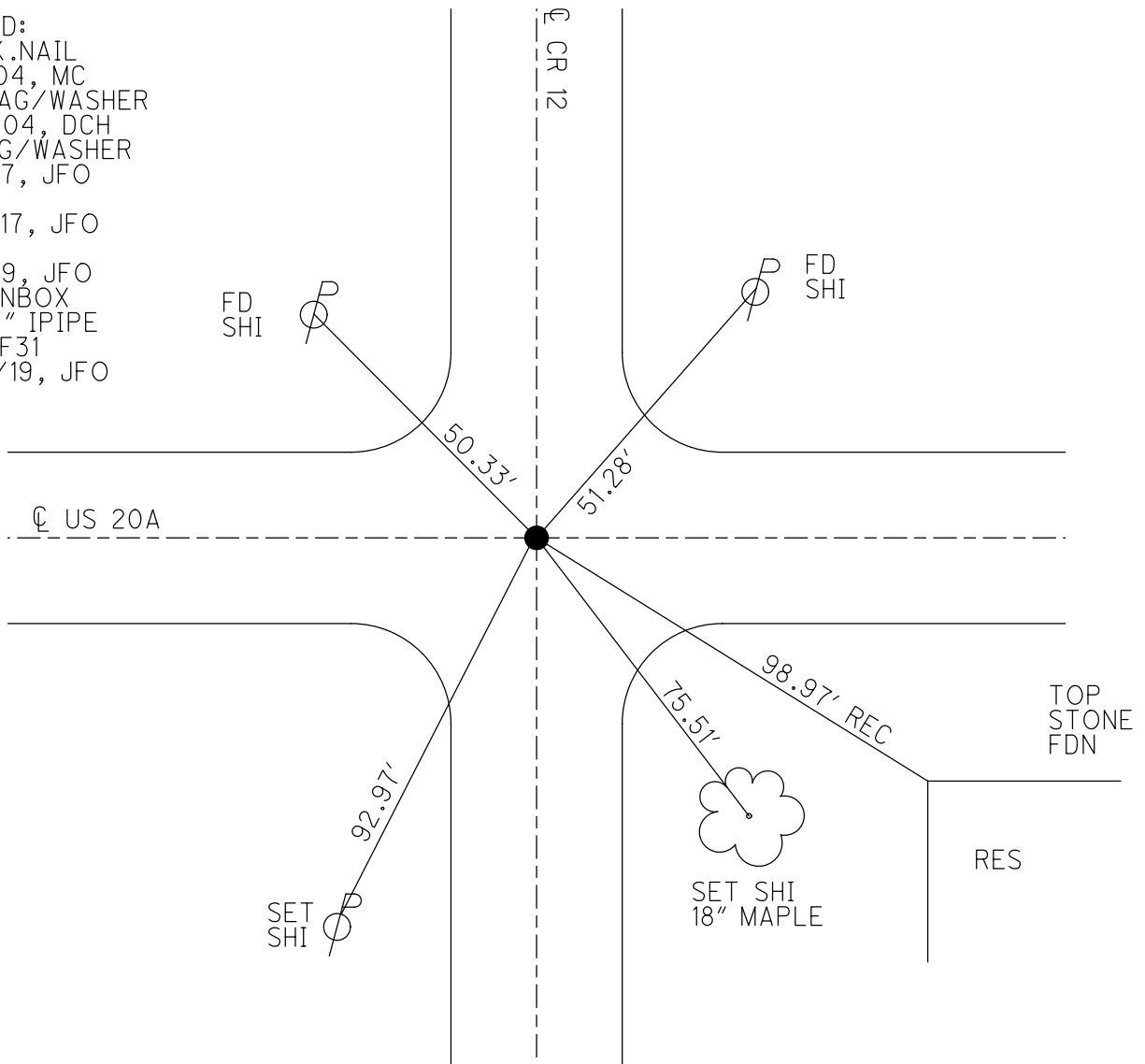
GEOID: 2012A

GRID: NORTHING: 698652.834

EASTING: 1531896.829



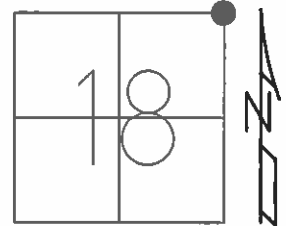
RECORD:
 FD P.K.NAIL
 9/16/04, MC
 SET MAG/WASHER
 10/13/04, DCH
 FD MAG/WASHER
 12/5/17, JFO
 REF31
 12/21/17, JFO
 REF31
 6/13/19, JFO
 FD MONBOX
 W/ 1 1/2" IPIPE
 NEWREF31
 10/25/19, JFO



O.D.O.T. DISTRICT 2 SURVEY OFFICE (USE ONLY)

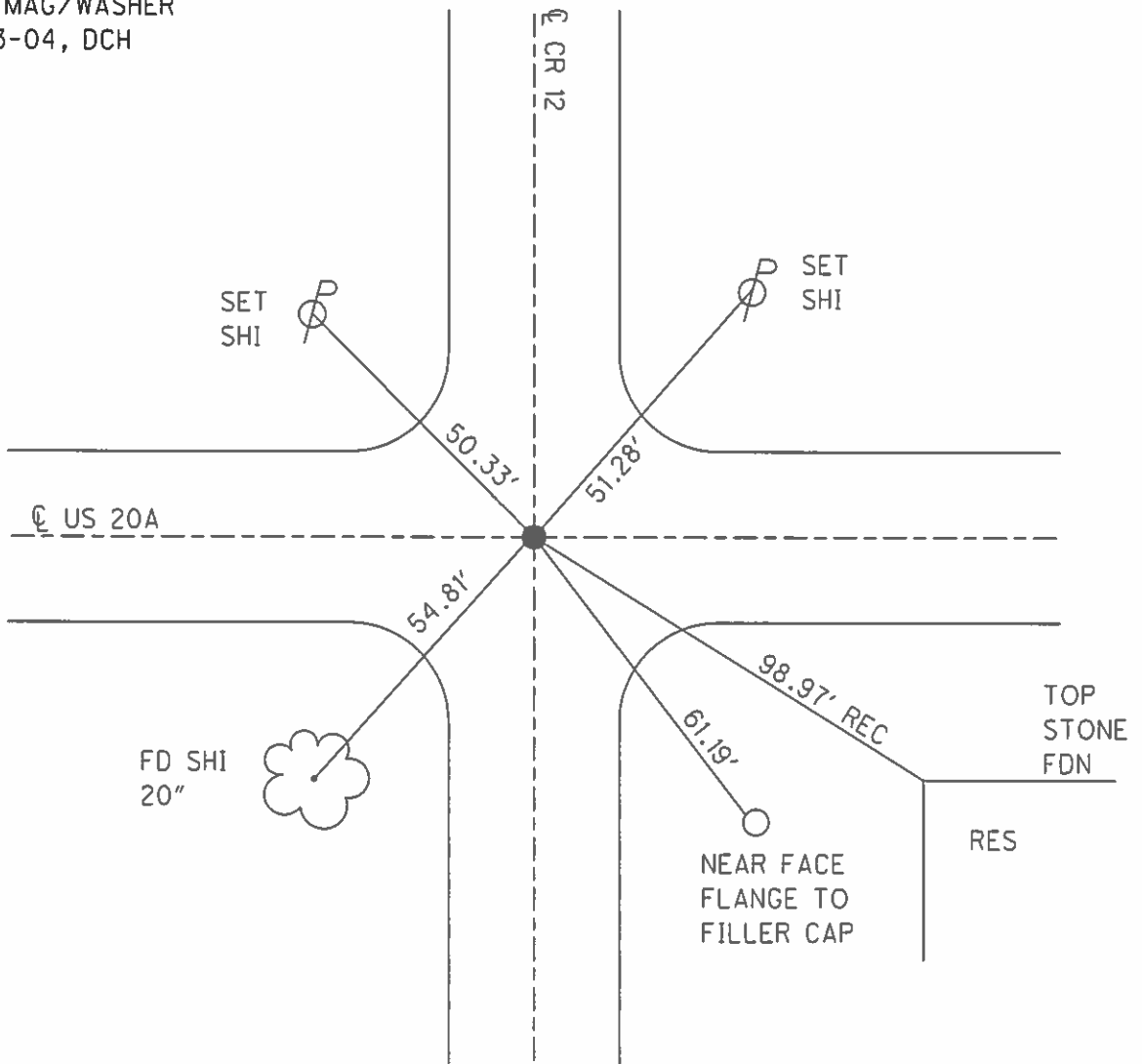
PERSONNEL _____ REFERENCE NO. 31 SHEET 57 OF 61
 NOTES HOMAN DATE 9/16/04 ROUTE US 20A
 H.C. CANTERBURY WEATHER CLOUDY COUNTY FULTON
 R.C. BARNHISEL TEMP. 70° TOWNSHIP YORK
 SECTION 18
T 7 N R 7 E

TYPE MONUMENT P.K.NAIL
 ON SURFACE - ~~BELOW~~ ON _____
 LEFT - ☉ PAV'T - RIGHT ON _____
 - TO - EDGE PAVEMENT
 S.L.M. 795+79



GRID: NORTHING: _____ EASTING: _____

SET MAG/WASHER
 10-13-04, DCH



O.D.O.T. DISTRICT 2 SURVEY OFFICE

PERSONNEL _____

REFERENCE NO. 31

SHEET 4 OF 7

NOTES HOMAN

DATE 9-16-04

ROUTE U.S. 20-A

H.C. CANTERBURY

WEATHER CLOUDY

COUNTY FULTON

R.C. BARNHISEL

TEMP. 70°

TOWNSHIP YORK

SECTION 7-8-17-18

T 7 N R 7 E

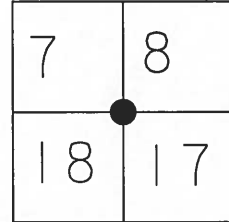
TYPE MONUMENT _____ PK NAIL _____

ON SURFACE ~~-BELOW~~ _____ YES _____

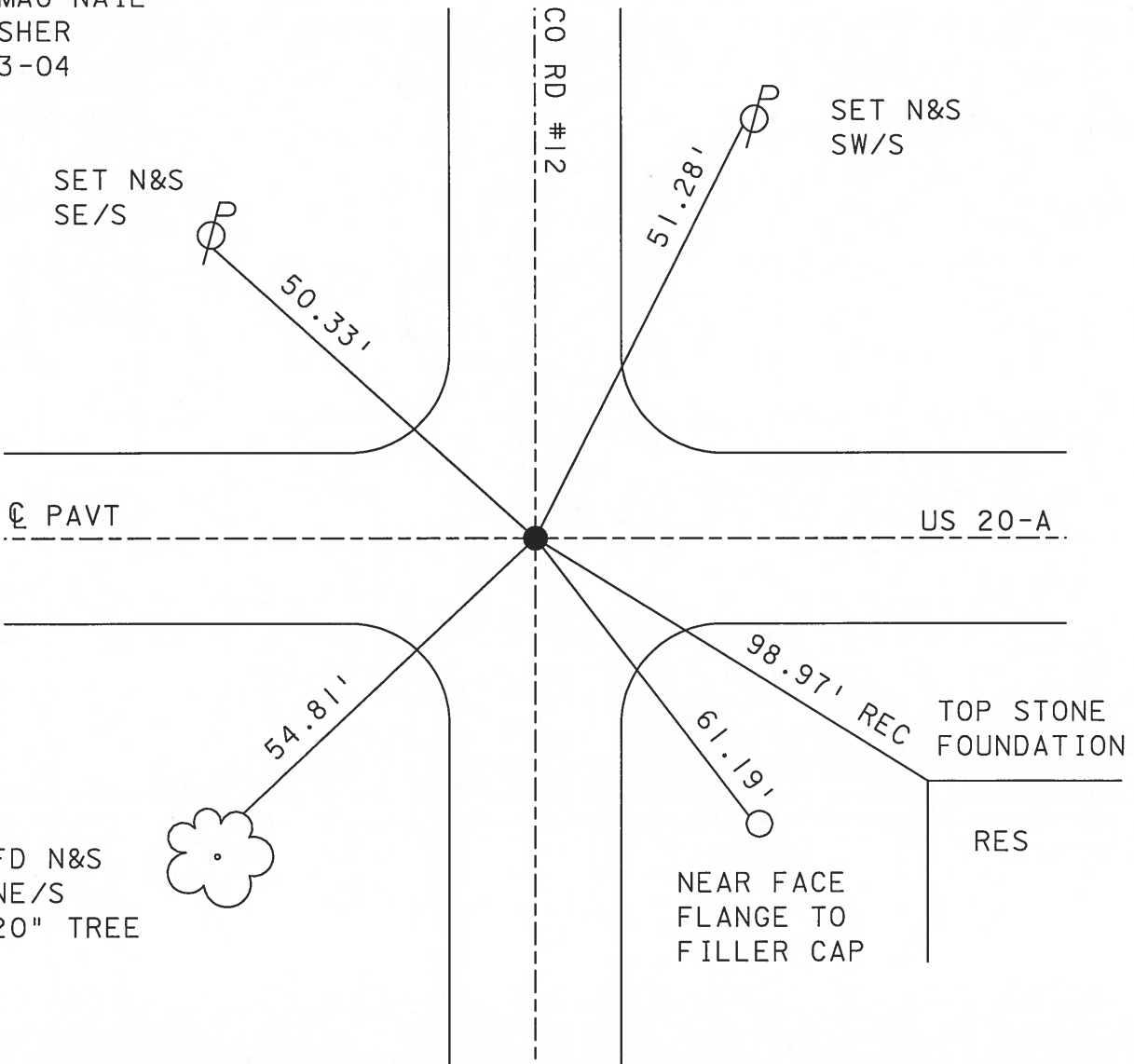
~~LEFT~~ - Q PAVT ~~-RIGHT~~ _____ YES _____

_____ TO _____ EDGE PAVEMENT _____

S.L.M. _____ 795+79 _____



SET MAG NAIL
& WASHER
10-13-04
DCH



O.D.O.T. DISTRICT 2 SURVEY OFFICE

PERSONNEL

REFERENCE NO. 31

SHEET 8 OF 24

NOTES 1. Stone

H.C. D. Curtis

DATE 16 Sept. 86

ROUTE US #20-A

R.G. J. Hauscholder

WEATHER cool

COUNTY Fulton

TEMP. 57°

TOWNSHIP York

SECTION 7-8-17-18

T R

TYPE MONUMENT PK Nail

ON SURFACE - BELOW Surface

LEFT- & PAV'T. - RIGHT

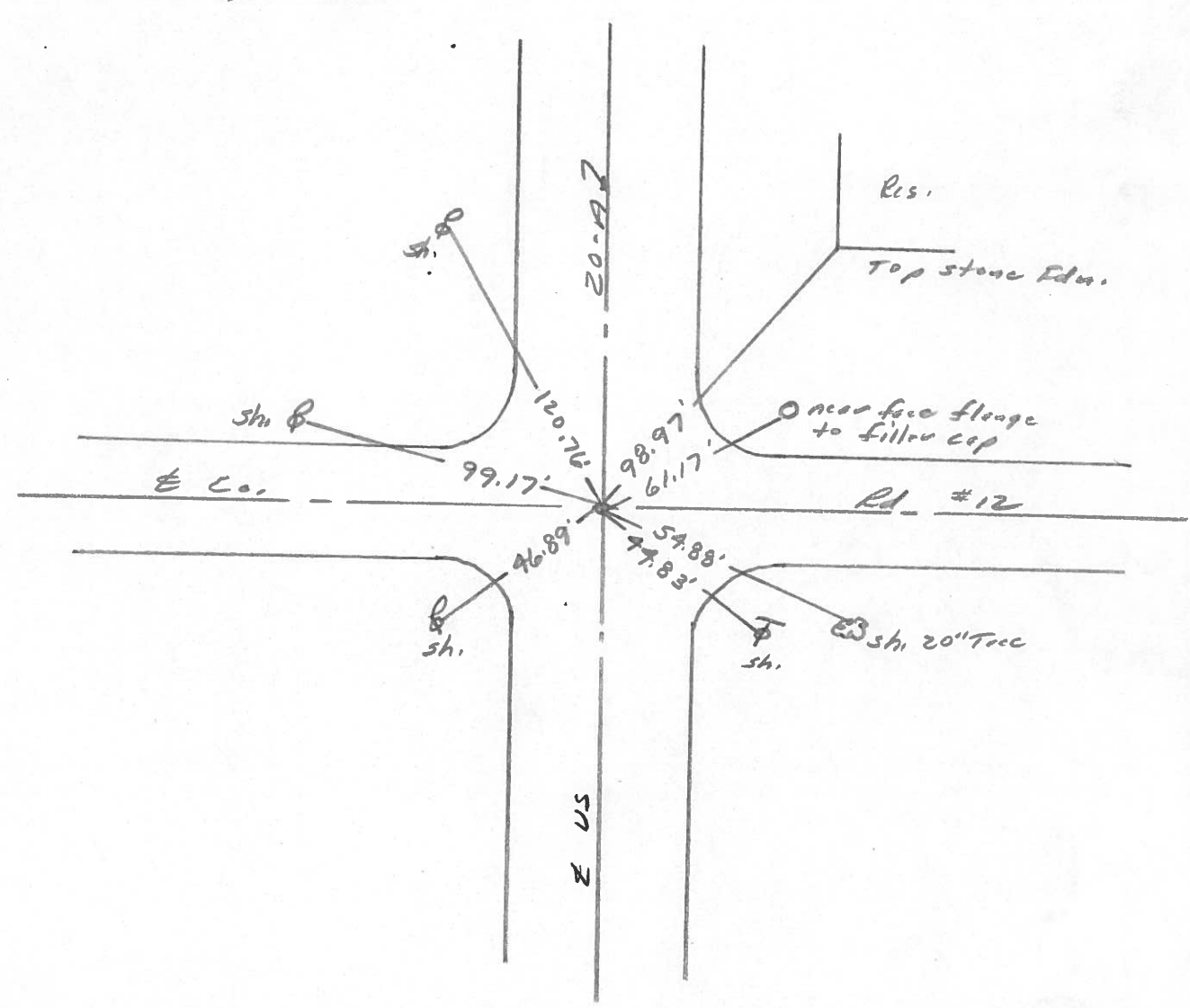
 TO EDGE PAVEMENT

S.L.M. 796+25

7	8
18	17



SET P.K. NAIL TO SURFACE
4-29-88



O.D.O.T. DISTRICT 2 SURVEY OFFICE

SHEET OF

County Fulton S.R. 2 & US 20A

Date 6-5-1980 ^{OK-10-15-80}

Township York

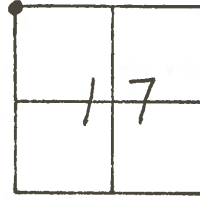
Weather Clear

Section NW Cor. Sec. 17 NE Cor. Sec. 18

Temp. +80°

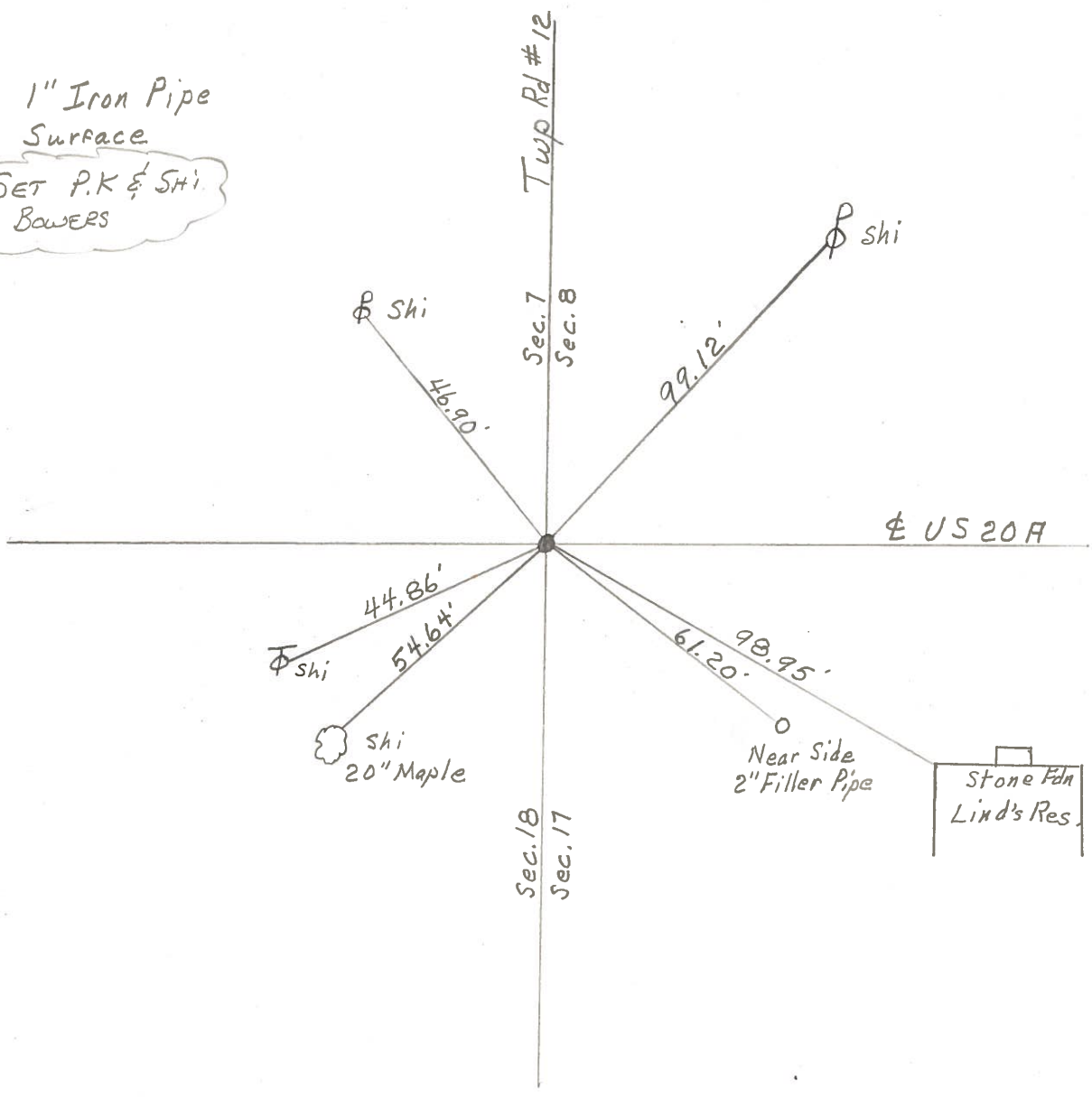
TZN, R1E

Personnel Smith
Bowers
Mead



(31)

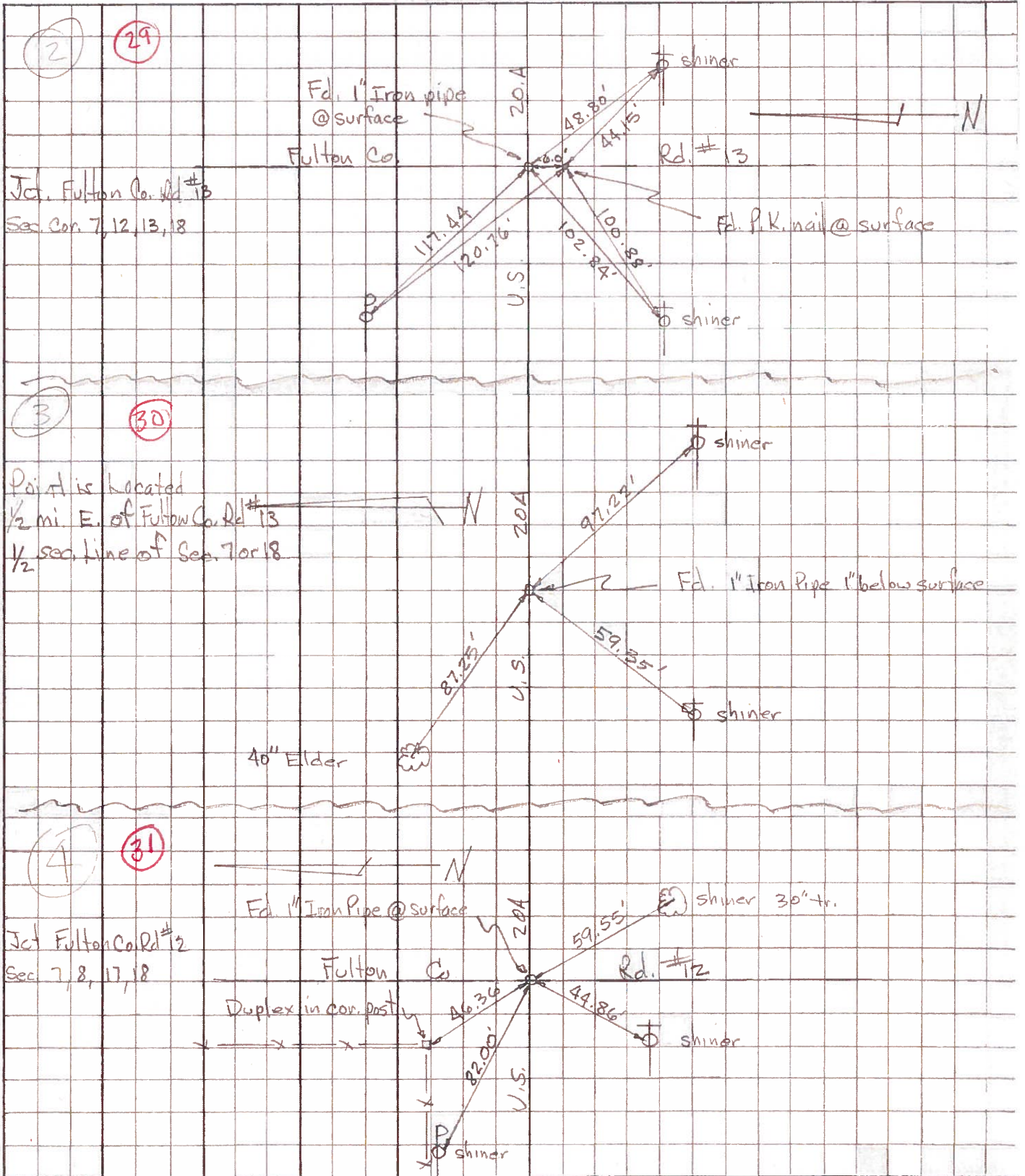
Fd 1" Iron Pipe
@ Surface
SET P.K & Shi.
BOWERS



PERSONNEL	TITLE	PERSONNEL	TITLE
Tomic			
Wesler			
Varyo			
Granata			

COUNTY Fulton DATE April 12, 1973
 S. R. U.S. 70A WEATHER _____
 SEC. YORK TEMP. _____

DESCRIPTION _____ LEFT _____ CENTER LINE _____ RIGHT _____ JOB NO. _____



PERSONNEL TITLE PERSONNEL TITLE COUNTY Fulton DATE Jan 1972
Red Beach _____
Newcomb _____ S. R. US 20-A WEATHER _____
Knape _____
Eriksen _____ SEC. YORK TWP TEMP. _____

DESCRIPTION LEFT CENTER LINE RIGHT JOB NO. _____

32

S $\frac{1}{4}$ STONE, Sec. 8 YORK TWP. T-7-N
 N $\frac{1}{4}$ STONE, Sec. 17 YORK TWP T-7-N

Dup W/S Wagner Mtr. Sales Sign
 Dup SW/S 3rd panel post westerly
 Found 10" pin 3" below surface.
 Found qtr STONE w/ tile 15" below surface, 18 Jan. 72
 Discarded pin and Est. 12" x 1" pipe on surface over STONE STONE IS 0.3' south of ctr of 23.6' pavt.

US 20-A & Sec. Line 7

31

COR. STONE Sec. 7, 8, 17 & 18 YORK TWP T-7-N

Dup E/S
 Dup SW/S
 Found cor STONE w/ Brick 2 1/2" below surface, 18 Jan 1972
 Near side 3" pipe ctr. 15.5' x 2.5" abandoned pump island
 Found 10" pin 3" below surf. Found wood stake 7" below Found RR spk on surface Discarded all.
 EST. 18" x 1" pipe on surface over the COR. STONE, chiseled "+" top ctr of STONE STONE IS 0.4' south of ctr of 23.5' pavt.

US 20-A

30

S $\frac{1}{4}$ STONE, Sec. 7 YORK TWP. T-7-N
 N $\frac{1}{4}$ STONE, Sec. 18 YORK TWP T-7-N

60-d spk w/s Mulberry 7"-8"-9"-10"-11"-12" clump
 NE Cor. North parapet # 1-2 CB
 60-d spk NNE/S (37" Walnut)
 Found qtr STONE w/ tile 25" below pavt surface, chiseled "+" top ctr, US 20-A
 Est. 19" x 1" pipe on surface over STONE
 NE Cor. South parapet # 1-2 CB
 offset PK's 6' N & E on pavt. surface. STONE IS 0.1' south of ctr. of 24.0' pavt.
 Found 15" pin 10" below pavt surface over STONE
 Found small RR spk on surface

US 20-A

NW Cor., S $\frac{1}{2}$, SW $\frac{1}{4}$, Sec. 7, YORK Twp T-7-N

F

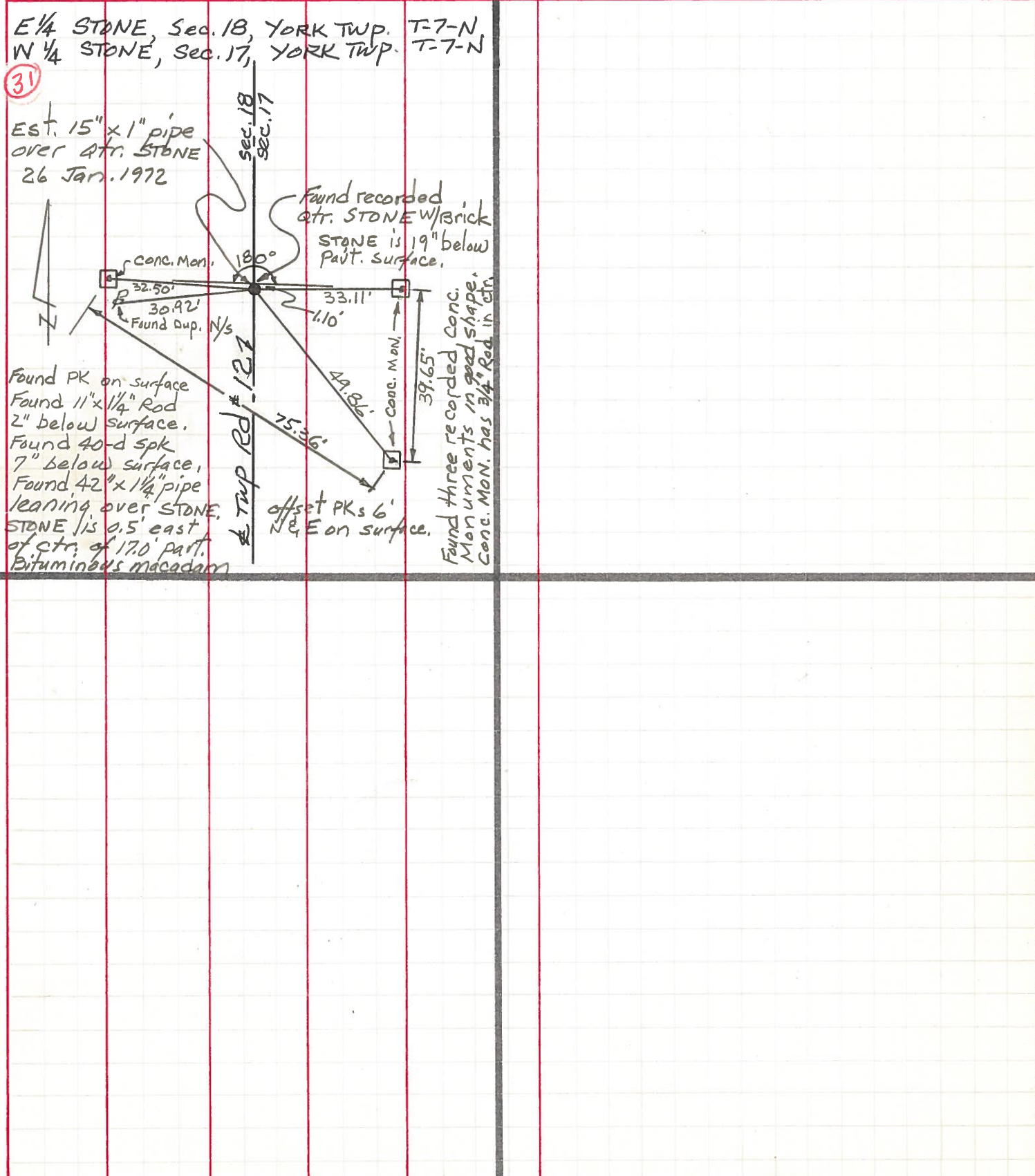
Near side 2" filler pipe
 STONE FOUND LIND'S Res.
 Found recorded 3/4 pipe 10" below pavt surf. see Vol. B/288 1928
 Est. 8 1/2" x 3/4" pipe over existing 3/4" pipe.
 20 Jan 1972

80 ROD \pm TO US 20-A

US 20-A

PERSONNEL TITLE PERSONNEL TITLE COUNTY FULTON DATE Jan 1972
Red Beach _____
Newcomb _____
Knape _____
Eriksen _____
 S. R. LS 20-A WEATHER _____
 SEC. YORK TWP. T-7-N TEMP. _____

DESCRIPTION CONTROL POINTS JOB NO. _____
 LEFT CENTER LINE RIGHT



E 1/4 STONE, Sec. 18, YORK TWP. T-7-N
 W 1/4 STONE, Sec. 17, YORK TWP. T-7-N

(31)

Est. 15" x 1" pipe
 over qtr. STONE
 26 Jan. 1972

Found recorded
 qtr. STONE w/brick
 STONE is 19" below
 Pavt. surface.

Found PK on surface
 Found 11" x 1/4" Rod
 2" below surface.
 Found 40-d spk
 7" below surface,
 Found 42" x 1/4" pipe
 leaning over STONE.
 STONE is 0.5' east
 of ctr. of 17.0' part.
 Bituminous macadam

Found three recorded Conc.
 Monuments in good shape.
 Conc. Mon. has 3/4" Red in ctr.

offset PKs 6'
 NE & E on surface.

PERSONNEL TITLE PERSONNEL TITLE

COUNTY Fulton DATE 3-28-55

S. R. #2 & 20 Alt. WEATHER 9-12-60

SEC. M, A, O, TEMP.

DESCRIPTION LEFT CENTER LINE RIGHT JOB NO.

DESCRIPTION	LEFT	CENTER LINE	RIGHT	JOB NO.
P.I. Sta. 53+62.34 S.W. cor. sec. 7 Fd. iron pin 12" below surface of pav't. (Not plum bed)			SE. to shiner in T.P. 45.35' S.W. to shiner in A. Post 46.90' S.W. to shiner in T.P. 102.25' N.W. to shiner in 24" Elm 171.45' N.E. to shiner in 20" Hickory 51.05'	
	#72 ✓			
Sta. 79+78.58 S. 1/4 sec. 7 Fd. iron pin			N.W. to shiner in 30" walnut 87.25' S.W. to shiner in T.P. 59.60 S.E. to iron A.P. 1' above gnd. 44.30' N.E. to shi. in 24" Spruce N.E. 97.15'	
	#73 ✓			
Sta. 106+08.39 S.W. cor. sec. 8 Iron pin			N.E. to iron post in pump island 62.09' N.W. to shiner in P.P. 81.90' S.W. to shiner in 12" maple 54.83 S.E. to shiner in 30" catalpa 59.70'	
	#74 ✓			
Sta. 132+68.17 S. 1/4 sec. 8 Fd. iron pin			N.N.E. to steel sign post stake 40.47 N.N.E. to shiner in P.P. 40.94 40.88 N.W. to shiner in 3rd fence post 54.35 S. to shiner in T.P. 38.25	
	#75			
Sta. 159+27.37 S.W. cor. sec 9 Fd. iron pin			S.W. to shiner in T.P. 44.20' N.E. to shiner in P.P. 45.67' S.E. to near side of Gov. B.M. 56.97' N.W. to near side of iron A.P. 44.80'	
	#76			